

World Leader in Sophisticated Packaging Systems**MSD22** Manual Side Drive**series overview**

The BestPack® MSD 6" Series Semi-Automatic Uniform Tape Carton Sealers is an operator-fed solution for cartons needing a 6" seal. This machine is perfect for applications needing tamper protection or where pilferage is an issue.

All systems incorporate our exclusive pop out pressure sensitive "High Speed" tape heads with patented tab adjustment, and the dual (telescopic) masts allow for an extra 4" carton height extension on the upper assembly.

major features

- Two Side Belts
- Telescopic Mast Design
- Extra 4" Carton Height Adjustment Available on Upper Assembly
- Adjustable Bed Height 24.6" to 30.75"
- Width/Height Adjustment either side of machine
- Exclusive 4 roller top compression
- Tape Roll Lengths: 1000 yd., 1500 yd., 2000 yd.
- Heavy Duty Frame
- UL Approved Electrical Parts
- Designed for uniform applications Capable of Interchanging 2" or 3" Tape Heads
- Electrical on/off box can be mounted on either side of machine

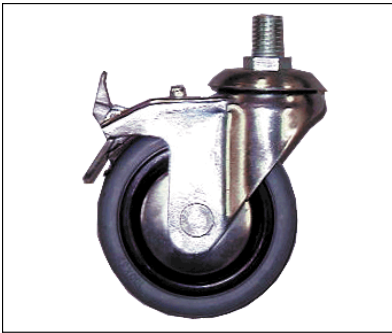
standard features

- Exclusive Pop-out pressure sensitive "high speed" tape head with patented tab adjustment and noise reduction arm
- Operation Manual

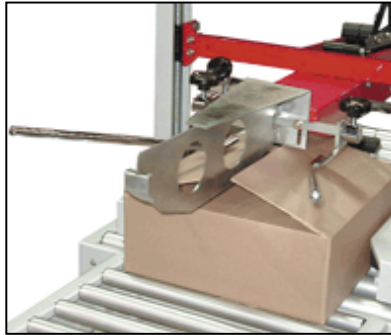
World Leader in Sophisticated Packaging Systems

optional features

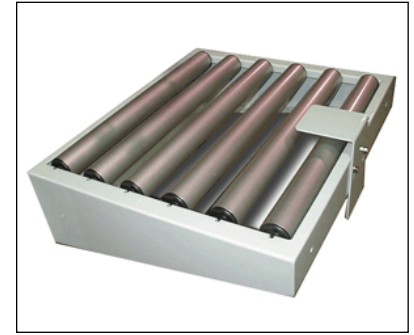
- Spare Parts Kit
- High Speed Motor Upgrade (Up to 125 ft./mm.)
- Motorized Height and/or Width Adjustment
- Interlock Safety Gates
- Stainless Steel
- Infeed/Exit Conveyor



Locking Castors



3 Flap Folder



Infeed/Exit Conveyor w/ Stabilizer

machine & carton specifications

- Power Requirements: 110 Volts 60 Hz
- Speed: Up to 40 cartons/minute
- Tape Head: Standard: 6"
- Shipping Weight: 342 - 550 lbs

series comparison table

Model	Machine Size	Carton Range	Cartons/Min.	Shipping Weight (lbs.)
MSD 22-6 6" Tape Head	39.4" x 32.8" x 55.5"	(6.0"-U) x (8.25"** - 20.5") x (3.25"- 20.5")	Up to 40	425

* All specifications capable of customization

**With skid plates