

**World Leader in Sophisticated Packaging Systems****MS1E** Manual Side Drive One Edge**series overview**

The BestPack® MS1E Series is the newest addition to the BestPack carton sealing family. Capable of sealing any carton needing only a one-edge seal, this type of seal is perfect for FOL and clamshell cartons. With its unique one-edge design and high-speed throughput of 45 cartons/minute, this one-edge sealer is a great addition to BestPack's extensive line of carton sealing machinery.

All systems incorporate our exclusive pop out pressure sensitive "High Speed" tape heads with patented tab adjustment. Also available in Stainless Steel.

**major features**

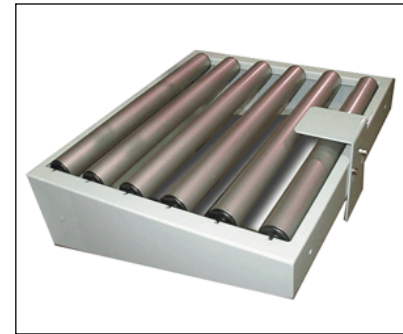
- 2 Side Driven Belts
- Adjustable Bed Height from 24.5" to 30.75"
- Box Top Compression Unit
- Tape Roll Lengths: 1000 yd., 1500 yd., 2000 yd.
- Heavy Duty Frame
- UL Approved Electrical Parts
- Designed for Uniform Applications
- Rugged Construction
- Cost Effective

**standard features**

- Exclusive Pop-out pressure sensitive "high speed" tape head with patented tab adjustment and noise reduction arm
- Maintenance Free, Oil-less Cylinders
- Operation Manual

**World Leader in Sophisticated Packaging Systems****optional features**

- **High Speed Motor Upgrade (Up to 125 ft./mm.)**
- **Motorized Height and/or Width Adjustment**
- **Interlock Safety Gates**
- **Spare Parts Kit**
- **Stainless Steel**
- **Indexer**
- **Low or No Tape Sensor**
- **Infeed/Exit Conveyor**

**Locking Castors****Infeed/Exit Conveyor w/ Stabilizer****machine & carton specifications**

- **Power Requirements: 115 Volts 60 Hz, 1.9 A, 122 watts/motor**
- **Speed: Up to 45 cartons/minute**
- **Tape Head: Standard: 2"; Available: 3"**
- **Shipping Weight: 350 lbs**

**series comparison table**

Model	Machine Size	Carton Range	Cartons/Min.	Shipping Weight (lbs.)
MS1E 22-2 2" TapeHead	(41.5") x (26.0") x (62.25" - 68.75")	(7.0"-U) x (1.72" - 5.5") x (4.0" - 21.75")	Up to 45	350

\* All specifications capable of customization and subject to change without notice