

computar[®]

CCTV LENS PRODUCT GUIDE

10-11



The World Standard for Industrial Lenses.

At CBC, we have set the world standard for industrial lenses through the design, manufacture and global sales of the "Computar" brand. Since the very beginning of the video security market, we have established a strong worldwide distribution network. As a pioneer in CCTV lenses, CBC and the Computar brand have grown along with the demands of the world market.

Computar CCTV lenses were introduced in the U.S.A. during the mid 1970s and have continued to meet security challenges globally for more than 30 years. Today, we lead the industry in Japan, Europe, Asia and markets all over the world. We offer a comprehensive lineup of high-quality products with excellent cost performance. Our designs utilize leading-edge technology, enabling us to achieve the highest quality while also ramping up production in our factories in Japan and abroad. We are proud to have an established worldwide sales network, built on the excellence of our Computar products.

CBC is committed to maintaining the world standard for industrial lenses through continuous research and development. We continue to strive to achieve even greater quality to meet our customer needs for today's evolving security challenges.

CONTENTS

| | | | |
|----|------------------------|--------------------------------------|------------------------|
| 01 | FEATURE INDICATION | | FEATURE INDICATION |
| 02 | MODEL NAME CODING RULE | | MODEL NAME CODING RULE |
| 03 | MANUAL IRIS | C-MOUNT / CS-MOUNT | MANUAL IRIS |
| 04 | AUTO IRIS | DC DRIVE / VIDEO DRIVE | AUTO IRIS |
| 06 | VARI-FOCAL MANUAL IRIS | | VARI-FOCAL MANUAL IRIS |
| 09 | VARI-FOCAL AUTO IRIS | DC DRIVE | VARI-FOCAL AUTO IRIS |
| 13 | VARI-FOCAL AUTO IRIS | VIDEO DRIVE | VARI-FOCAL AUTO IRIS |
| 16 | MANUAL ZOOM | MANUAL IRIS / DC DRIVE / VIDEO DRIVE | MANUAL ZOOM |
| 18 | MOTORIZED ZOOM | 1/3" | MOTORIZED ZOOM |
| 22 | MOTORIZED ZOOM | 1/2" | MOTORIZED ZOOM |
| 28 | PINHOLE | MANUAL IRIS / DC DRIVE / VIDEO DRIVE | PINHOLE ACCESSORIES |
| 29 | ACCESSORIES | | PINHOLE ACCESSORIES |
| 30 | MEGAPIXEL & FA | SECURITY / FA • IMAGE PROCESSING | MEGAPIXEL & FA |
| 34 | TECHNICAL INFORMATION | | TECHNICAL INFORMATION |
| 42 | ANGLE OF VIEW | | ANGLE OF VIEW |

FEATURE INDICATION

Lens type

| | | |
|-------------|-------------|--|
| FIX | Fixed Focal | Fixed focal length, very simple and compact design |
| VARI | Vari-Focal | Compact design, focal length adjusted manually |
| ZOOM | Zoom | Focal length adjusted without focus shift of image plane |

Iris type

| | | |
|----------------|-----------------|--|
| MANUAL | Manual Iris | Manually operated iris |
| DC | DC Auto Iris | Auto iris supporting DC controlled cameras |
| VIDEO | Video Auto Iris | Auto iris supporting Video controlled cameras |
| 3 MOTOR | 3 Motors | Operated iris, zoom and focus by electric remote control |

Function

| | | |
|-------------------|---------------------|---|
| F1.0 | Wide Aperture Ratio | Large aperture that transmits more light |
| ASP | Aspherical Lens | Aspherical lens which greatly improves the image quality and compact design |
| MEGA PIXEL | Megapixel Lens | High definition lens which is used mainly with megapixel cameras |
| IR | Day & Night | Lens optimized for both visible and new IR spectrum which eliminates focus shift with Day&Night cameras |

Feature of Vari-Focal

| | | |
|-------------|-----------------------|--|
| WIDE | Wide Angle Vari-Focal | Vari-focal lens provides a wide field of view |
| TELE | Telephoto Vari-Focal | Vari-focal lens provides a small field of view or magnified image in long range applications |

Feature of Zoom

| | | |
|--------------------|------------------------|---|
| SPOT FILTER | Spot Filter | A neutral density filter inside the lens that attenuates the amount of light transmission from very bright object |
| PRESET | Preset on Focus & Zoom | The model which has the function of preset on focus and zoom |
| OVERRIDE | Override Manual | The model which enables manual control from remote locations |

Application of Megapixel / FA Lens

| | | |
|-----------------|---------------------|--|
| SECURITY | Security | For Security, available for monitoring at infinity. Provides good image recognition accuracy |
| FA | FA-Image Processing | For Factory Automation or Image Processing, used in monitoring at a close proximity |

FEATURE INDICATION

MODEL NAME CODING RULE

MANUAL IRIS

AUTO IRIS

VARI-FOCAL MANUAL IRIS

VARI-FOCAL AUTO IRIS

MANUAL ZOOM

MOTORIZED ZOOM

PINHOLE ACCESSORIES

MEGAPIXEL & FA

TECHNICAL INFORMATION

ANGLE OF VIEW

MODEL NAME CODING RULE

Manual Iris / Auto Iris(DC&Video) / Vari-Focal Manual Iris / Vari-Focal Auto Iris (DC & Video)

| | | | | | | | | |
|-----------------|---|---|----|----|----|----|----|-----|
| T2314FICS | T | | 23 | 14 | | FI | CS | |
| T3Z2910CS | T | | 3Z | 29 | 10 | | CS | |
| HG3Z4512AFCS-IR | H | G | 3Z | 45 | 12 | AF | CS | -IR |
| HG2Z0414FC-MP | H | G | 2Z | 04 | 14 | F | C | -MP |
| | ① | ② | ③ | ④ | ⑤ | ⑥ | ⑦ | ⑧ |

| | |
|---------------------------------|---|
| ① CCD Size | T..... 1/3 inch |
| | H..... 1/2 inch |
| | M..... 2/3 inch |
| ② With Galvanometer (Auto Iris) | |
| ③ Zoom Ratio | HG 2Z 0414FC-MP... 2 times (f=4~8mm) |
| ④ Focal Length | T 23 14FICS..... f=2.3 mm |
| ⑤ Aperture | T3Z29 10 CS..... F1.0 |
| ⑥ Iris Type | FI / Blank..... Manual Iris |
| | AF..... Auto Iris (Video) |
| | F..... Auto Iris (DC) |
| ⑦ Mount Type | CS..... CS-Mount |
| | C..... C-Mount |
| ⑧ Character | IR..... InfraRed Lens (Day & Night) |
| | MP..... Megapixel |
| | P..... Pinhole |

Manual Zoom

| | | | | | | | | |
|----------------|---|--|----|----|----|----|----|-----|
| H6Z0812 | H | | 6Z | 08 | 12 | | | |
| T6Z5710AIDC-CS | T | | 6Z | 57 | 10 | AI | DC | -CS |
| H6Z0812AIVD | H | | 6Z | 08 | 12 | AI | VD | |
| | ① | | ③ | ④ | ⑤ | ⑨ | ⑩ | ⑦ |

| | |
|-------------|---------------------|
| ⑨ Auto Iris | |
| ⑩ Iris Type | DC..... DC Drive |
| | VD..... Video Drive |

Motorized Zoom

| | | | | | | | | |
|------------------|---|--|-----|----|----|-------|-----|-----|
| T21Z5816M-CS | T | | 21Z | 58 | 16 | M | -CS | |
| H10Z1218DC | H | | 10Z | 12 | 18 | DC | | |
| H16Z7516AMSPR-IR | H | | 16Z | 75 | 16 | AMSPR | | -IR |
| | ① | | ③ | ④ | ⑤ | ⑪ | ⑦ | ⑧ |

| | |
|-----------------------------|---|
| ⑪ Functional Identification | M..... 3 Motors (Iris,Focus & Zoom by Motorized Control) |
| | MP..... 3 Motors + Preset |
| | MS..... 3 Motors + Spot Filter |
| | MSP..... 3 Motors + Spot Filter + Preset |
| | AMS..... Auto Iris (Video)+Spot Filter |
| | AMSP..... Auto Iris (Video)+Spot Filter + Preset |
| | AMSR..... Auto Iris (Video)+Spot Filter+ Over-Ride |
| | AMSPR... Auto Iris (Video) +Spot Filter+ Preset + Over-Ride |
| | DC..... Auto Iris (DC)+Spot Filter |
| | PDC..... Auto Iris (DC)+Spot Filter+ Preset |

※ This rule does not apply to some products

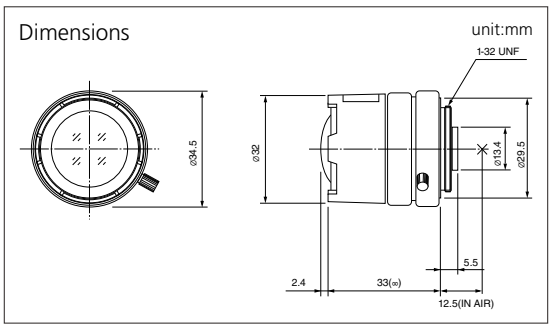
MODEL NAME CODING RULE
FEATURE INDICATION
MANUAL IRIS
AUTO IRIS
VARI-FOCAL MANUAL IRIS
VARI-FOCAL AUTO IRIS
MANUAL ZOOM
MOTORIZED ZOOM
PINHOLE ACCESSORIES
MEGAPIXEL & FA
TECHNICAL INFORMATION
ANGLE OF VIEW

FEATURE INDICATION
MODEL NAME CODING RULE
MANUAL IRIS
AUTO IRIS
VARI-FOCAL MANUAL IRIS
VARI-FOCAL AUTO IRIS
MANUAL ZOOM
MOTORIZED ZOOM
PINHOLE ACCESSORIES
MEGAPIXEL & FA
TECHNICAL INFORMATION
ANGLE OF VIEW

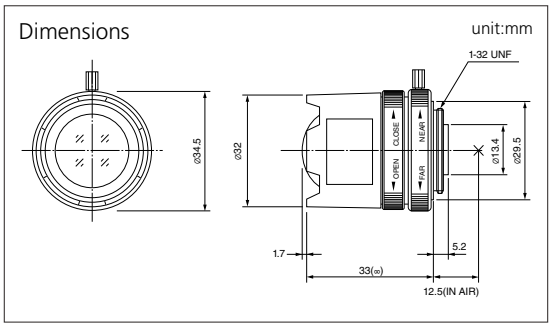
FIX
MANUAL
FIX
MANUAL
FIX
MANUAL
IR
FIX
MANUAL
IR
FIX
MANUAL
FIX
MANUAL



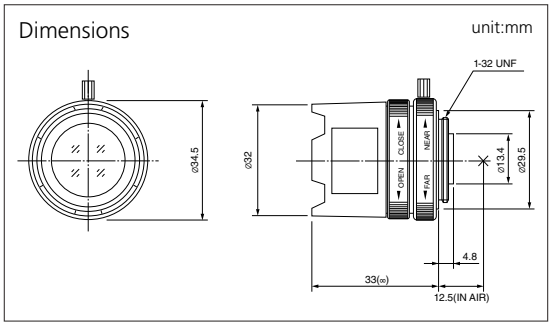
| MODEL NO. | T2314FICS-3 |
|---|------------------------------------|
| Format (") | 1/3 |
| Mount | CS |
| Focal Length (mm) | 2.3 |
| Aperture (F) | 1.4-16C |
| Angle of View (HOR)° | 113.3 |
| M.O.D. (m) | 0.2 |
| Effective Aperture | Front (φmm) 22.8 Rear (φmm) 7.0 |
| Front Filter Thread (φMxP=) | - |
| Dimensions (φφD), (φφstHD) or (WxHxD)mm | φ34.5 × 35.4 |
| Weight (g) | 43 |



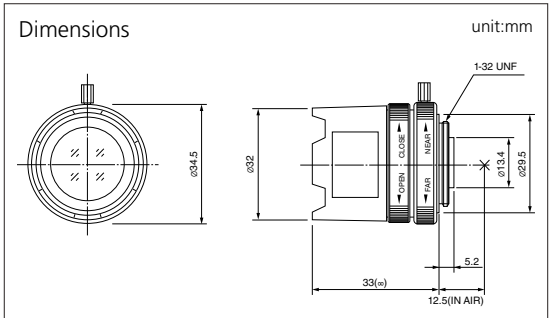
| MODEL NO. | T2616FICS-4 |
|---|------------------------------------|
| Format (") | 1/3 |
| Mount | CS |
| Focal Length (mm) | 2.6 |
| Aperture (F) | 1.6-11C |
| Angle of View (HOR)° | 99.6 |
| M.O.D. (m) | 0.3 |
| Effective Aperture | Front (φmm) 16.4 Rear (φmm) 8.0 |
| Front Filter Thread (φMxP=) | - |
| Dimensions (φφD), (φφstHD) or (WxHxD)mm | φ34.5 × 34.7 |
| Weight (g) | 45 |



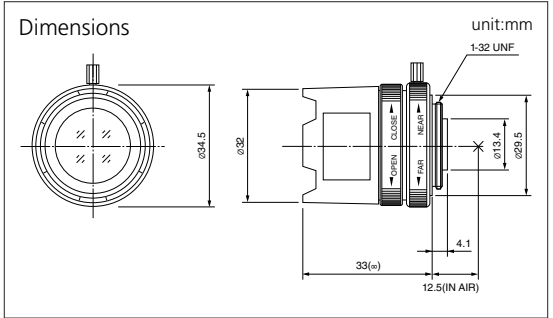
| MODEL NO. | T0412FICS-3 |
|---|------------------------------------|
| Format (") | 1/3 |
| Mount | CS |
| Focal Length (mm) | 4 |
| Aperture (F) | 1.2-16C |
| Angle of View (HOR)° | 63.9 |
| M.O.D. (m) | 0.2 |
| Effective Aperture | Front (φmm) 15.5 Rear (φmm) 8.5 |
| Front Filter Thread (φMxP=) | - |
| Dimensions (φφD), (φφstHD) or (WxHxD)mm | φ34.5 × 33 |
| Weight (g) | 36 |



| MODEL NO. | T0812FICS-3 |
|---|------------------------------------|
| Format (") | 1/3 |
| Mount | CS |
| Focal Length (mm) | 8 |
| Aperture (F) | 1.2-16C |
| Angle of View (HOR)° | 34.7 |
| M.O.D. (m) | 0.2 |
| Effective Aperture | Front (φmm) 15.0 Rear (φmm) 8.8 |
| Front Filter Thread (φMxP=) | - |
| Dimensions (φφD), (φφstHD) or (WxHxD)mm | φ34.5 × 33 |
| Weight (g) | 37 |



| MODEL NO. | H1214FICS-3 |
|---|------------------------------------|
| Format (") | 1/2 |
| Mount | CS |
| Focal Length (mm) | 12 |
| Aperture (F) | 1.4-16C |
| Angle of View (HOR)° | 30.4 |
| M.O.D. (m) | 0.3 |
| Effective Aperture | Front (φmm) 13.0 Rear (φmm) 8.8 |
| Front Filter Thread (φMxP=) | - |
| Dimensions (φφD), (φφstHD) or (WxHxD)mm | φ34.5 × 33 |
| Weight (g) | 33 |



MANUAL IRIS

C-MOUNT

MANUAL IRIS

FIX

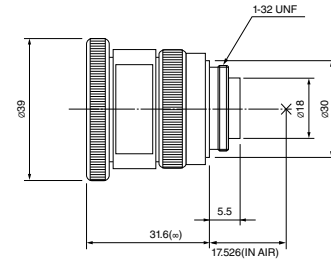
MANUAL



| MODEL NO. | M8513 |
|---------------------------------------|-------------------------------------|
| Format (") | 2/3 |
| Mount | C |
| Focal Length (mm) | 8.5 |
| Aperture (F) | 1.3-16C |
| Angle of View (HOR)° | 57.4 |
| M.O.D. (m) | 0.2 |
| Effective Aperture | Front (φmm) 20.0 Rear (φmm) 12.0 |
| Front Filter Thread (φMxP=) | - |
| Dimensions (φxD) (φxHxD) or (WxHxD)mm | φ39 × 31.6 |
| Weight (g) | 50 |

Dimensions

unit:mm



AUTO IRIS

DC DRIVE / VIDEO DRIVE

AUTO IRIS

FIX

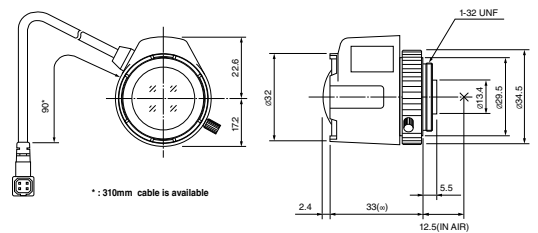
DC



| MODEL NO. | TG2314FCS-3 |
|---------------------------------------|------------------------------------|
| Format (") | 1/3 |
| Mount | CS |
| Focal Length (mm) | 2.3 |
| Aperture (F) | 1.4-360C |
| Angle of View (HOR)° | 113.3 |
| M.O.D. (m) | 0.2 |
| Effective Aperture | Front (φmm) 22.8 Rear (φmm) 7.0 |
| Front Filter Thread (φMxP=) | - |
| Dimensions (φxD) (φxHxD) or (WxHxD)mm | φ32 × 39.8 × 35.4 |
| Weight (g) | 45 |

Dimensions

unit:mm



FIX

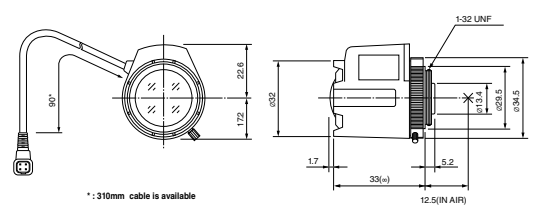
DC



| MODEL NO. | TG2616FCS-4 |
|---------------------------------------|------------------------------------|
| Format (") | 1/3 |
| Mount | CS |
| Focal Length (mm) | 2.6 |
| Aperture (F) | 1.6-360C |
| Angle of View (HOR)° | 99.6 |
| M.O.D. (m) | 0.3 |
| Effective Aperture | Front (φmm) 16.4 Rear (φmm) 8.0 |
| Front Filter Thread (φMxP=) | - |
| Dimensions (φxD) (φxHxD) or (WxHxD)mm | φ32 × 39.8 × 34.7 |
| Weight (g) | 47 |

Dimensions

unit:mm



FIX

DC

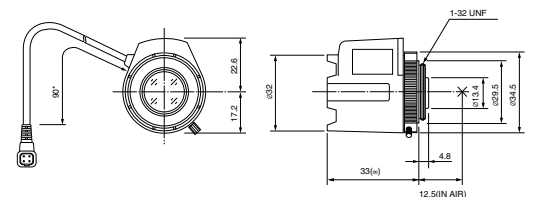
IR



| MODEL NO. | TG0412FCS-3 |
|---------------------------------------|------------------------------------|
| Format (") | 1/3 |
| Mount | CS |
| Focal Length (mm) | 4 |
| Aperture (F) | 1.2-360C |
| Angle of View (HOR)° | 63.9 |
| M.O.D. (m) | 0.2 |
| Effective Aperture | Front (φmm) 15.5 Rear (φmm) 8.5 |
| Front Filter Thread (φMxP=) | - |
| Dimensions (φxD) (φxHxD) or (WxHxD)mm | φ32 × 39.8 × 33 |
| Weight (g) | 38 |

Dimensions

unit:mm



FEATURE INDICATION
MODEL NAME CODING RULE
MANUAL IRIS
AUTO IRIS
VARI-FOCAL MANUAL IRIS
VARI-FOCAL AUTO IRIS
MANUAL ZOOM
MOTORIZED ZOOM
PINHOLE ACCESSORIES
MEGAPIXEL & FA
TECHNICAL INFORMATION
ANGLE OF VIEW

AUTO IRIS

AUTO IRIS

DC DRIVE / VIDEO DRIVE

FEATURE INDICATION
MODEL NAME CODING RULE
MANUAL IRIS
AUTO IRIS
VARI-FOCAL
MANUAL IRIS
VARI-FOCAL
AUTO IRIS
MANUAL ZOOM
MOTORIZED ZOOM
PINHOLE ACCESSORIES
MEGAPIXEL & FA
TECHNICAL INFORMATION
ANGLE OF VIEW

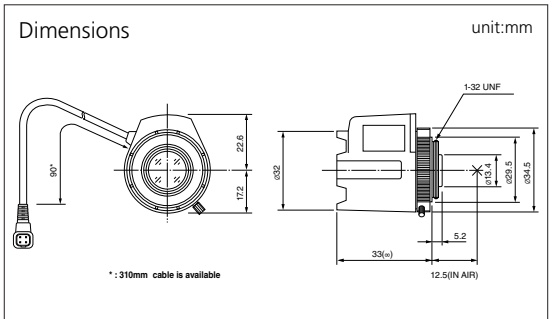
FIX

DC

IR



| MODEL NO. | TG0812FCS-3 |
|--|------------------------------------|
| Format (") | 1/3 |
| Mount | CS |
| Focal Length (mm) | 8 |
| Aperture (F) | 1.2-360C |
| Angle of View (HOR)° | 34.7 |
| M.O.D. (m) | 0.2 |
| Effective Aperture | Front (φmm) 15.0 Rear (φmm) 8.8 |
| Front Filter Thread (φMxP=) | - |
| Dimensions (φxD), (φxHxD) or (WxHxD)mm | φ32 × 39.8 × 33 |
| Weight (g) | 39 |

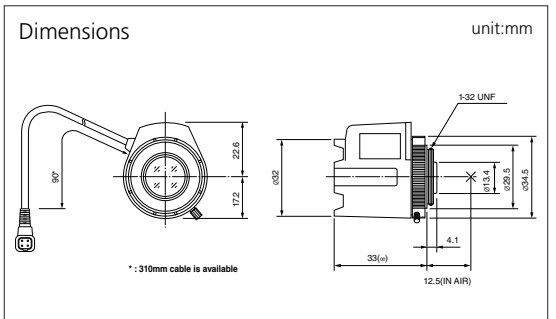


FIX

DC



| MODEL NO. | HG1214FCS-3 |
|--|------------------------------------|
| Format (") | 1/2 |
| Mount | CS |
| Focal Length (mm) | 12 |
| Aperture (F) | 1.4-360C |
| Angle of View (HOR)° | 30.4 |
| M.O.D. (m) | 0.3 |
| Effective Aperture | Front (φmm) 13.0 Rear (φmm) 8.8 |
| Front Filter Thread (φMxP=) | - |
| Dimensions (φxD), (φxHxD) or (WxHxD)mm | φ32 × 39.8 × 33 |
| Weight (g) | 35 |

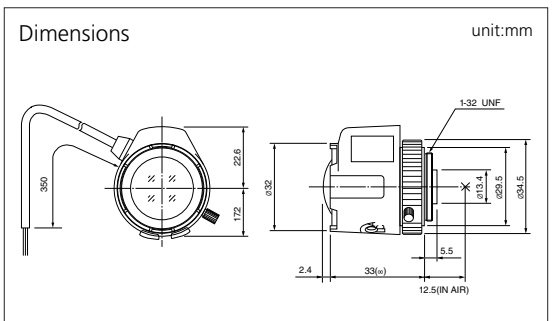


FIX

VIDEO



| MODEL NO. | TG2314AFCS-3 |
|--|------------------------------------|
| Format (") | 1/3 |
| Mount | CS |
| Focal Length (mm) | 2.3 |
| Aperture (F) | 1.4-360C |
| Angle of View (HOR)° | 113.3 |
| M.O.D. (m) | 0.2 |
| Effective Aperture | Front (φmm) 22.8 Rear (φmm) 7.0 |
| Front Filter Thread (φMxP=) | - |
| Dimensions (φxD), (φxHxD) or (WxHxD)mm | φ32 × 39.8 × 35.4 |
| Weight (g) | 48 |

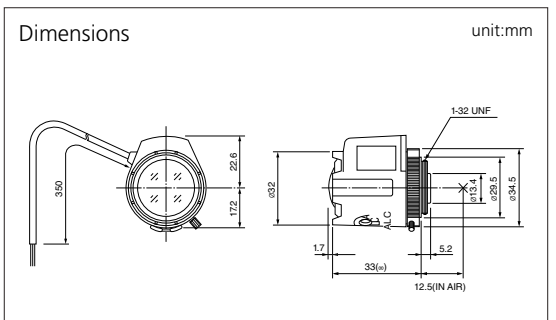


FIX

VIDEO



| MODEL NO. | TG2616AFCS-4 |
|--|------------------------------------|
| Format (") | 1/3 |
| Mount | CS |
| Focal Length (mm) | 2.6 |
| Aperture (F) | 1.6-360C |
| Angle of View (HOR)° | 99.6 |
| M.O.D. (m) | 0.3 |
| Effective Aperture | Front (φmm) 16.4 Rear (φmm) 8.0 |
| Front Filter Thread (φMxP=) | - |
| Dimensions (φxD), (φxHxD) or (WxHxD)mm | φ32 × 39.8 × 34.7 |
| Weight (g) | 50 |

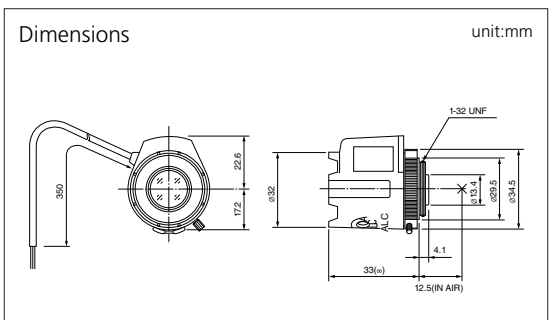


FIX

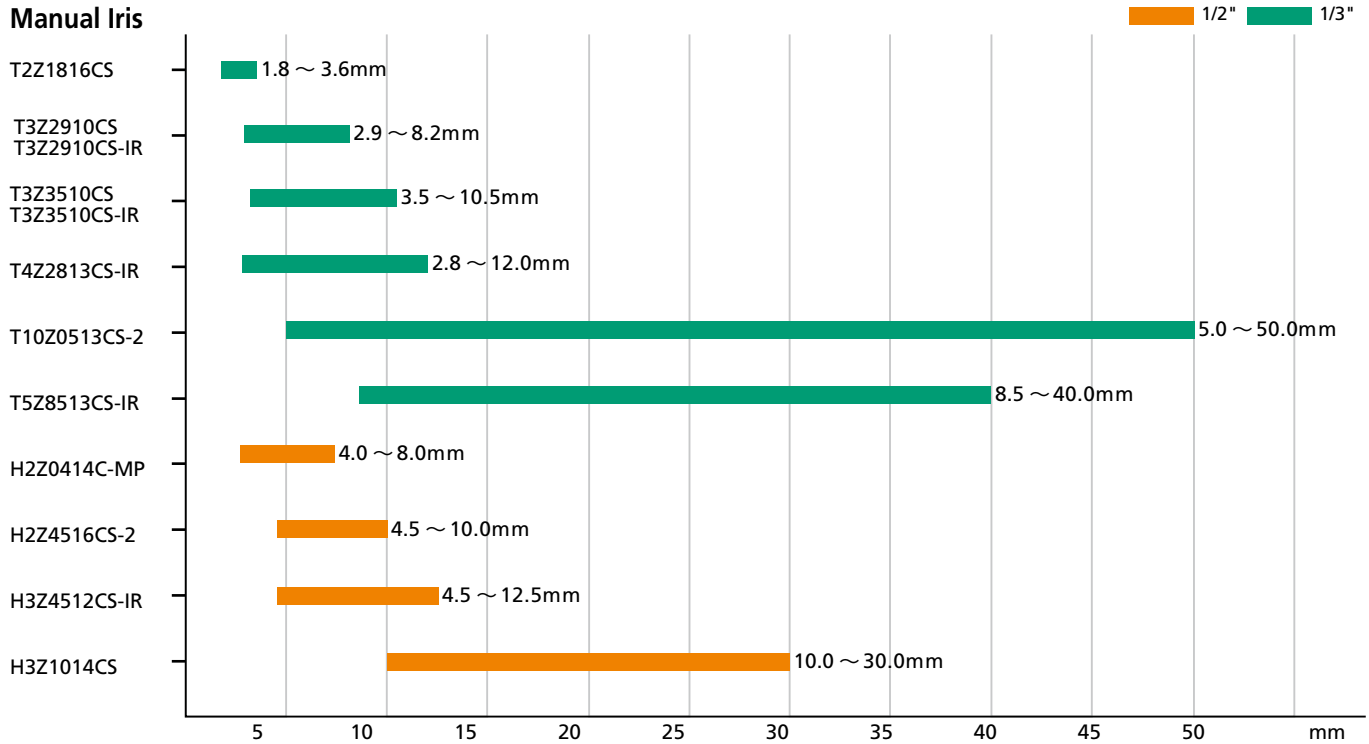
VIDEO



| MODEL NO. | HG1214AFCS-3 |
|--|------------------------------------|
| Format (") | 1/2 |
| Mount | CS |
| Focal Length (mm) | 12 |
| Aperture (F) | 1.4-360C |
| Angle of View (HOR)° | 30.4 |
| M.O.D. (m) | 0.3 |
| Effective Aperture | Front (φmm) 13.0 Rear (φmm) 8.8 |
| Front Filter Thread (φMxP=) | - |
| Dimensions (φxD), (φxHxD) or (WxHxD)mm | φ32 × 39.8 × 33 |
| Weight (g) | 39 |



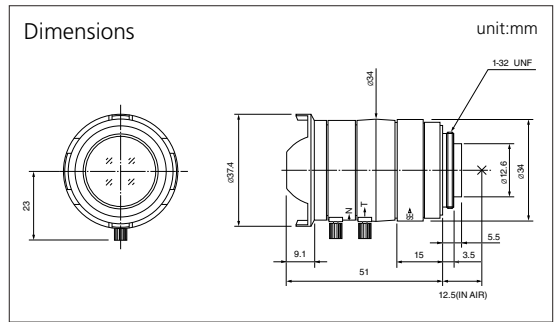
Vari-Focal Lens Comparison



VARI
MANUAL
WIDE



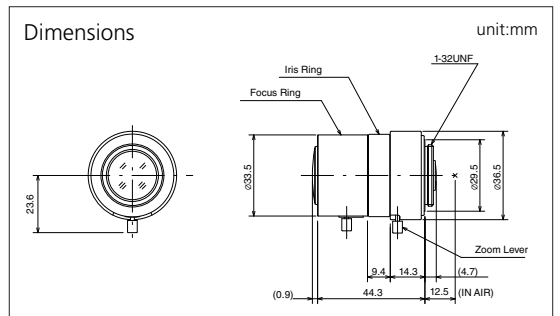
| MODEL NO. | T2Z1816CS |
|---------------------------------|------------------|
| Format (") | 1/3 |
| Mount | CS |
| Focal Length (mm) | 1.8-3.6 |
| Aperture (F) | 1.6-16C |
| Angle of View (HOR)° | 144.2-79.4 |
| M.O.D. (m) | 0.2 |
| Effective Aperture | Front (φmm) 22.0 |
| | Rear (φmm) 7.9 |
| Front Filter Thread (φMxP=) | - |
| Dimensions (φxHxD) or (WxHxD)mm | φ37.4 × 51 |
| Weight (g) | 68 |



VARI
MANUAL
F1.0
ASP



| MODEL NO. | T3Z2910CS |
|---------------------------------|------------------|
| Format (") | 1/3 |
| Mount | CS |
| Focal Length (mm) | 2.9-8.2 |
| Aperture (F) | 1.0-16C |
| Angle of View (HOR)° | 98.3-35.2 |
| M.O.D. (m) | 0.5 |
| Effective Aperture | Front (φmm) 18.8 |
| | Rear (φmm) 9.0 |
| Front Filter Thread (φMxP=) | - |
| Dimensions (φxHxD) or (WxHxD)mm | φ36.5 × 44.3 |
| Weight (g) | 41 |



FEATURE INDICATION
MODEL NAME CODING RULE
MANUAL IRIS
AUTO IRIS
VARI-FOCAL MANUAL IRIS
VARI-FOCAL AUTO IRIS
MANUAL ZOOM
MOTORIZED ZOOM
PINHOLE ACCESSORIES
MEGAPIXEL & FA
TECHNICAL INFORMATION
ANGLE OF VIEW

FEATURE INDICATION
MODEL NAME CODING RULE
MANUAL IRIS
AUTO IRIS
VARI-FOCAL
MANUAL IRIS
VARI-FOCAL
AUTO IRIS
MANUAL
ZOOM
MOTORIZED
ZOOM
PINHOLE
ACCESSORIES
MEGAPIXEL
& FA
TECHNICAL
INFORMATION
ANGLE OF
VIEW

VARI
MANUAL
F1.0
ASP
IR

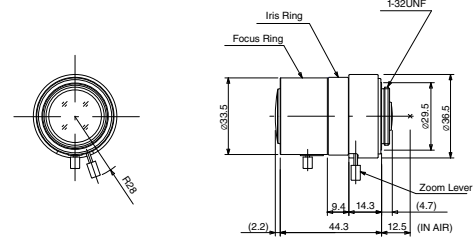


NEW

| MODEL NO. | T3Z2910CS-IR |
|---------------------------------------|------------------|
| Format (") | 1/3 |
| Mount | CS |
| Focal Length (mm) | 2.9-8.2 |
| Aperture (F) | 1.0-16C |
| Angle of View (HOR)° | 95.0-35.6 |
| M.O.D. (m) | 0.5 |
| Effective Aperture | Front (φmm) 19.0 |
| | Rear (φmm) 8.5 |
| Front Filter Thread (φMxP=) | - |
| Dimensions (φφD),(φφHxD) or (WxHxD)mm | φ36.5 × 44.3 |
| Weight (g) | 44 |

Dimensions

unit:mm



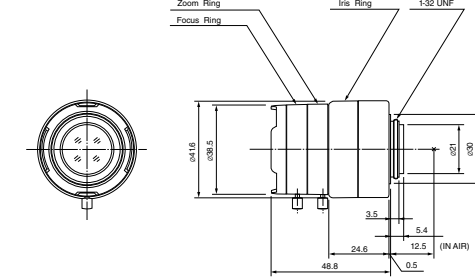
VARI
MANUAL
F1.0
ASP



| MODEL NO. | T3Z3510CS |
|---------------------------------------|------------------|
| Format (") | 1/3 |
| Mount | CS |
| Focal Length (mm) | 3.5-10.5 |
| Aperture (F) | 1.0-16C |
| Angle of View (HOR)° | 81.6-27.2 |
| M.O.D. (m) | 0.3 |
| Effective Aperture | Front (φmm) 18.5 |
| | Rear (φmm) 10.1 |
| Front Filter Thread (φMxP=) | - |
| Dimensions (φφD),(φφHxD) or (WxHxD)mm | φ41.6 × 48.8 |
| Weight (g) | 63 |

Dimensions

unit:mm



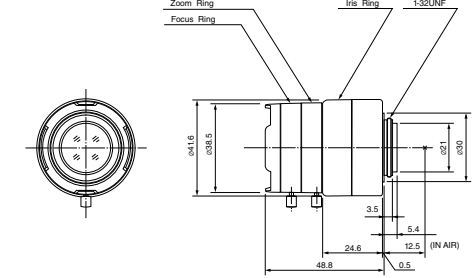
VARI
MANUAL
F1.0
ASP
IR



| MODEL NO. | T3Z3510CS-IR |
|---------------------------------------|------------------|
| Format (") | 1/3 |
| Mount | CS |
| Focal Length (mm) | 3.5-10.5 |
| Aperture (F) | 1.0-16C |
| Angle of View (HOR)° | 81.8-27.2 |
| M.O.D. (m) | 0.3 |
| Effective Aperture | Front (φmm) 18.6 |
| | Rear (φmm) 10.2 |
| Front Filter Thread (φMxP=) | - |
| Dimensions (φφD),(φφHxD) or (WxHxD)mm | φ41.6 × 48.8 |
| Weight (g) | 63 |

Dimensions

unit:mm



VARI
MANUAL
ASP
IR

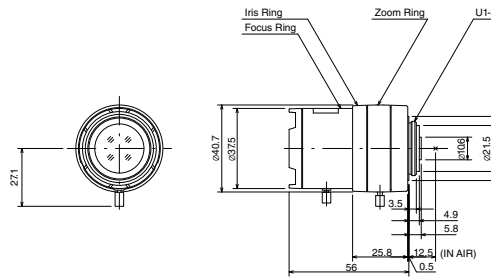


NEW

| MODEL NO. | T4Z2813CS-IR |
|---------------------------------------|------------------|
| Format (") | 1/3 |
| Mount | CS |
| Focal Length (mm) | 2.8-12 |
| Aperture (F) | 1.3-16C |
| Angle of View (HOR)° | 102.2-23.7 |
| M.O.D. (m) | 0.3 |
| Effective Aperture | Front (φmm) 23.0 |
| | Rear (φmm) 7.4 |
| Front Filter Thread (φMxP=) | - |
| Dimensions (φφD),(φφHxD) or (WxHxD)mm | φ40.7 × 56.0 |
| Weight (g) | 63 |

Dimensions

unit:mm



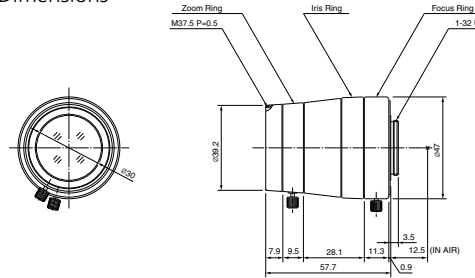
VARI
MANUAL
TELE
ASP



| MODEL NO. | T10Z0513CS-2 |
|---------------------------------------|------------------|
| Format (") | 1/3 |
| Mount | CS |
| Focal Length (mm) | 5-50 |
| Aperture (F) | 1.3-16C |
| Angle of View (HOR)° | 51.8-5.6 |
| M.O.D. (m) | 0.8 |
| Effective Aperture | Front (φmm) 29.5 |
| | Rear (φmm) 8.7 |
| Front Filter Thread (φMxP=) | 37.5 × 0.5 |
| Dimensions (φφD),(φφHxD) or (WxHxD)mm | φ47 × 57.7 |
| Weight (g) | 125 |

Dimensions

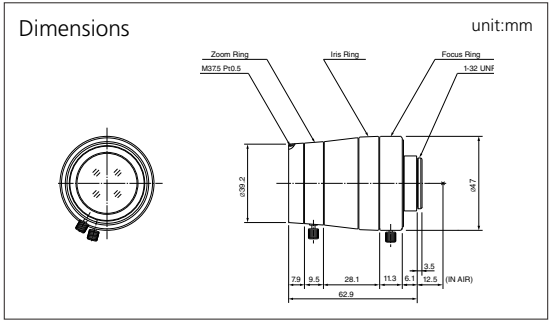
unit:mm



- VARI
- MANUAL
- TELE
- ASP
- IR



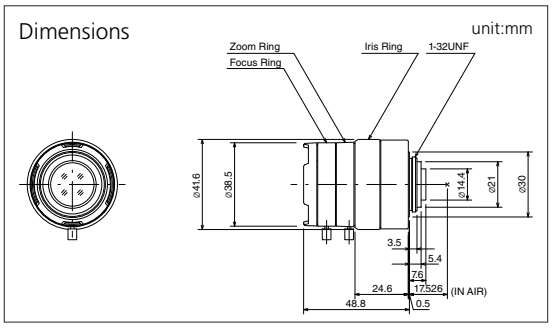
| MODEL NO. | T5Z8513CS-IR |
|--|------------------------------------|
| Format (") | 1/3 |
| Mount | CS |
| Focal Length (mm) | 8.5-40 |
| Aperture (F) | 1.3-16C |
| Angle of View (HOR)° | 33.5-7.1 |
| M.O.D. (m) | 0.8 |
| Effective Aperture | Front (φmm) 27.0 Rear (φmm) 9.3 |
| Front Filter Thread (φMxP=) | 37.5 × 0.5 |
| Dimensions (φxD, (φxHxD) or (WxHxD)mm) | φ47.0 × 62.9 |
| Weight (g) | 126 |



- VARI
- MANUAL
- MEGA PIXEL



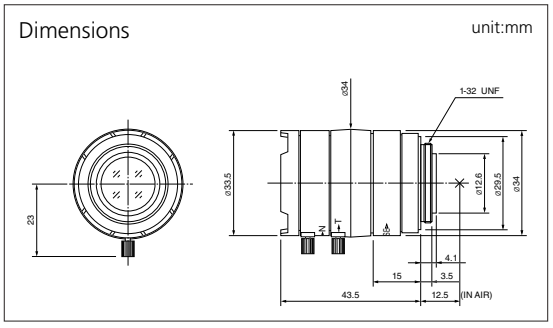
| MODEL NO. | H2Z0414C-MP |
|--|-------------------------------------|
| Format (") | 1/2 |
| Mount | C |
| Focal Length (mm) | 4-8 |
| Aperture (F) | 1.4-16C |
| Angle of View (HOR)° | 90.4-47.0 |
| M.O.D. (m) | 0.5 |
| Effective Aperture | Front (φmm) 22.2 Rear (φmm) 10.7 |
| Front Filter Thread (φMxP=) | - |
| Dimensions (φxD, (φxHxD) or (WxHxD)mm) | φ41.6 × 48.8 |
| Weight (g) | 72 |



- VARI
- MANUAL
- IR



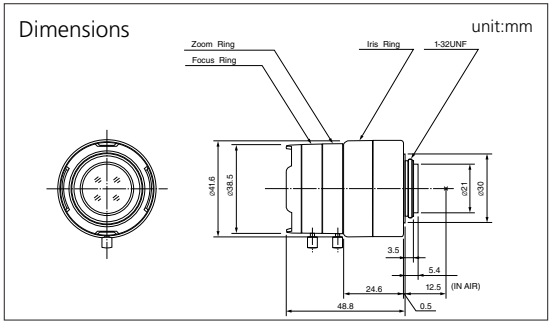
| MODEL NO. | H2Z4516CS-2 |
|--|------------------------------------|
| Format (") | 1/2 |
| Mount | CS |
| Focal Length (mm) | 4.5-10 |
| Aperture (F) | 1.6-16C |
| Angle of View (HOR)° | 81.3-38.2 |
| M.O.D. (m) | 0.3 |
| Effective Aperture | Front (φmm) 18.6 Rear (φmm) 9.0 |
| Front Filter Thread (φMxP=) | - |
| Dimensions (φxD, (φxHxD) or (WxHxD)mm) | φ34 × 43.5 |
| Weight (g) | 40 |



- VARI
- MANUAL
- ASP
- IR



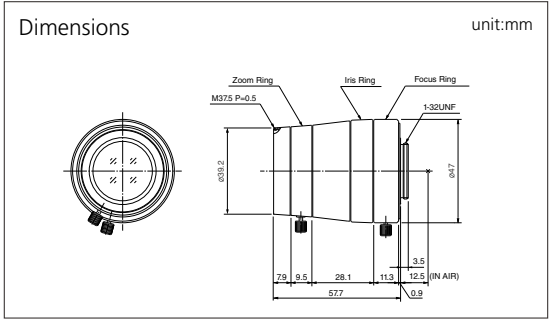
| MODEL NO. | H3Z4512CS-IR |
|--|------------------------------------|
| Format (") | 1/2 |
| Mount | CS |
| Focal Length (mm) | 4.5-12.5 |
| Aperture (F) | 1.2-16C |
| Angle of View (HOR)° | 83.7-30.1 |
| M.O.D. (m) | 0.3 |
| Effective Aperture | Front (φmm) 19.9 Rear (φmm) 9.9 |
| Front Filter Thread (φMxP=) | - |
| Dimensions (φxD, (φxHxD) or (WxHxD)mm) | φ41.6 × 48.8 |
| Weight (g) | 66 |



- VARI
- MANUAL
- TELE
- ASP
- IR



| MODEL NO. | H3Z1014CS |
|--|------------------------------------|
| Format (") | 1/2 |
| Mount | CS |
| Focal Length (mm) | 10-30 |
| Aperture (F) | 1.4-16C |
| Angle of View (HOR)° | 35.8-12.5 |
| M.O.D. (m) | 0.6 |
| Effective Aperture | Front (φmm) 26.6 Rear (φmm) 9.0 |
| Front Filter Thread (φMxP=) | 37.5 × 0.5 |
| Dimensions (φxD, (φxHxD) or (WxHxD)mm) | φ47 × 57.7 |
| Weight (g) | 125 |



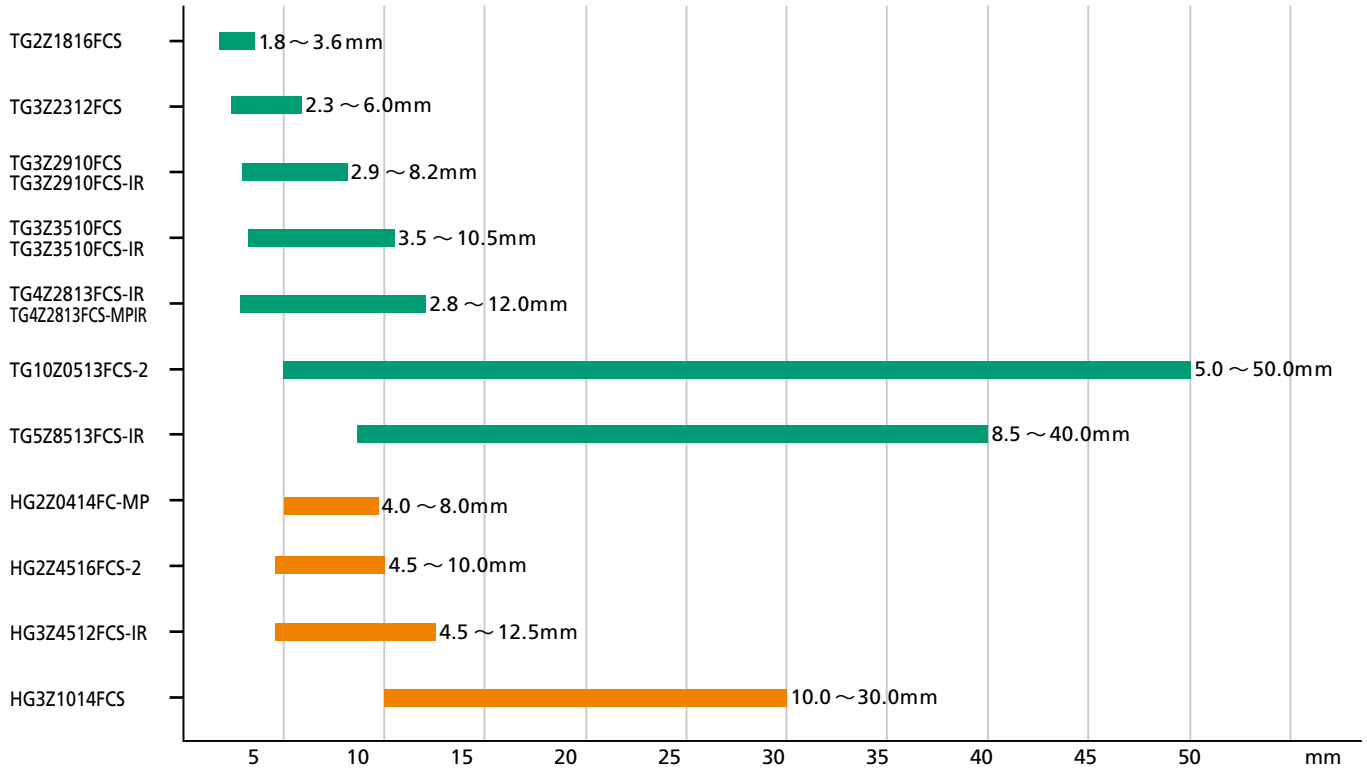
* HG3Z1014 Series 1/2type lenses have no focus shift with or without IR lighting only when used with 1/2type cameras. If these lenses are used with 1/3type cameras, some focus shift may occur with IR lighting.

FEATURE INDICATION
 MODEL NAME
 CODING RULE
 MANUAL IRIS
 AUTO IRIS
 VARI-FOCAL
 MANUAL IRIS
 VARI-FOCAL
 AUTO IRIS
 MANUAL
 ZOOM
 MOTORIZED
 ZOOM
 PINHOLE
 ACCESSORIES
 MEGA PIXEL
 & FA
 TECHNICAL
 INFORMATION
 ANGLE OF
 VIEW

Vari-Focal Lens Comparison

DC Drive

1/2" 1/3"



FEATURE INDICATION
MODEL NAME
CODING RULE
MANUAL IRIS
AUTO IRIS
VARI-FOCAL
MANUAL IRIS
VARI-FOCAL
AUTO IRIS
MANUAL ZOOM
MOTORIZED ZOOM
PINHOLE ACCESSORIES
MEGAPIXEL & FA
TECHNICAL INFORMATION
ANGLE OF VIEW

VARI

DC

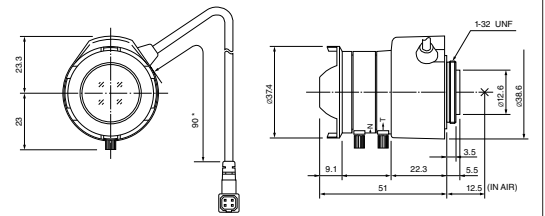
WIDE



| MODEL NO. | TG2Z1816FCS |
|---------------------------------|------------------------------------|
| Format (") | 1/3 |
| Mount | CS |
| Focal Length (mm) | 1.8-3.6 |
| Aperture (F) | 1.6-360C |
| Angle of View (HOR)° | 144.2-79.4 |
| M.O.D. (m) | 0.2 |
| Effective Aperture | Front (φmm) 22.0 Rear (φmm) 7.9 |
| Front Filter Thread (φMxP=) | - |
| Dimensions (φxHxD) or (WxHxD)mm | φ37.4 × 42.6 × 51 |
| Weight (g) | 78 |

Dimensions

unit:mm



VARI

DC

WIDE

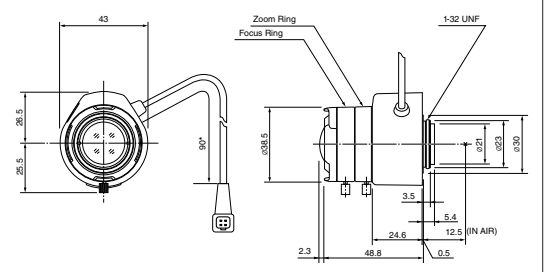
ASP



| MODEL NO. | TG3Z2312FCS |
|---------------------------------|------------------------------------|
| Format (") | 1/3 |
| Mount | CS |
| Focal Length (mm) | 2.3-6 |
| Aperture (F) | 1.2-360 |
| Angle of View (HOR)° | 114.8-48.2 |
| M.O.D. (m) | 0.3 |
| Effective Aperture | Front (φmm) 19.5 Rear (φmm) 9.0 |
| Front Filter Thread (φMxP=) | - |
| Dimensions (φxHxD) or (WxHxD)mm | φ38.5 × 48 × 51.1 |
| Weight (g) | 76 |

Dimensions

unit:mm

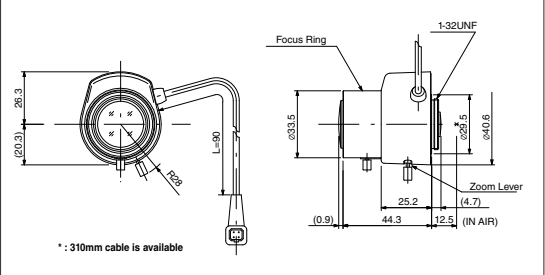


- VARI
- DC
- F1.0
- ASP



| MODEL NO. | TG3Z2910FCS |
|---------------------------------------|------------------------------------|
| Format (") | 1/3 |
| Mount | CS |
| Focal Length (mm) | 2.9-8.2 |
| Aperture (F) | 1.0-360C |
| Angle of View (HOR)° | 98.3-35.2 |
| M.O.D. (m) | 0.5 |
| Effective Aperture | Front (φmm) 18.8 Rear (φmm) 9.0 |
| Front Filter Thread (φMxP=) | - |
| Dimensions (φD), (φxHxD) or (WxHxD)mm | φ33.5 × 46.6 × 44.3 |
| Weight (g) | 47 |

Dimensions

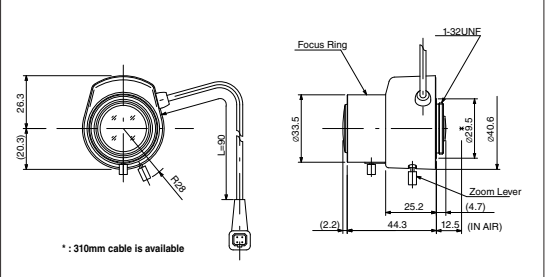


- VARI
- DC
- F1.0
- ASP
- IR



| MODEL NO. | TG3Z2910FCS-IR |
|---------------------------------------|------------------------------------|
| Format (") | 1/3 |
| Mount | CS |
| Focal Length (mm) | 2.9-8.2 |
| Aperture (F) | 1.0-360C |
| Angle of View (HOR)° | 95.0-35.6 |
| M.O.D. (m) | 0.5 |
| Effective Aperture | Front (φmm) 19.0 Rear (φmm) 8.5 |
| Front Filter Thread (φMxP=) | - |
| Dimensions (φD), (φxHxD) or (WxHxD)mm | φ33.5 × 46.6 × 44.3 |
| Weight (g) | 50 |

Dimensions

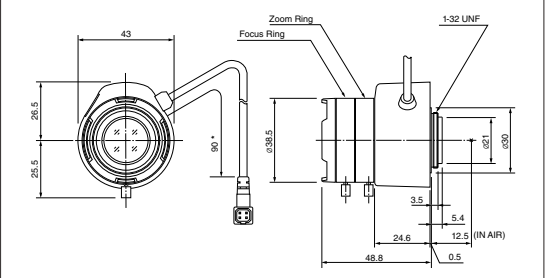


- VARI
- DC
- F1.0
- ASP



| MODEL NO. | TG3Z3510FCS |
|---------------------------------------|-------------------------------------|
| Format (") | 1/3 |
| Mount | CS |
| Focal Length (mm) | 3.5-10.5 |
| Aperture (F) | 1.0-360 |
| Angle of View (HOR)° | 81.6-27.2 |
| M.O.D. (m) | 0.3 |
| Effective Aperture | Front (φmm) 18.5 Rear (φmm) 10.1 |
| Front Filter Thread (φMxP=) | - |
| Dimensions (φD), (φxHxD) or (WxHxD)mm | φ38.5 × 48 × 48.8 |
| Weight (g) | 65 |

Dimensions

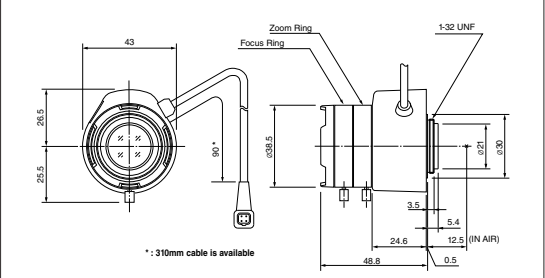


- VARI
- DC
- F1.0
- ASP
- IR



| MODEL NO. | TG3Z3510FCS-IR |
|---------------------------------------|-------------------------------------|
| Format (") | 1/3 |
| Mount | CS |
| Focal Length (mm) | 3.5-10.5 |
| Aperture (F) | 1.0-360 |
| Angle of View (HOR)° | 81.6-27.2 |
| M.O.D. (m) | 0.3 |
| Effective Aperture | Front (φmm) 18.6 Rear (φmm) 10.2 |
| Front Filter Thread (φMxP=) | - |
| Dimensions (φD), (φxHxD) or (WxHxD)mm | φ38.5 × 48 × 48.8 |
| Weight (g) | 65 |

Dimensions

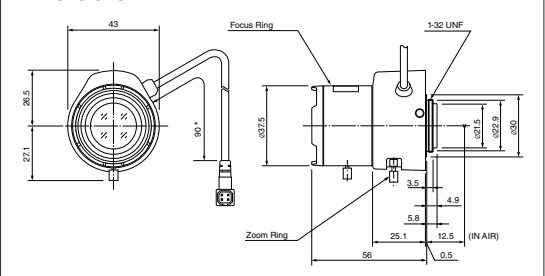


- VARI
- DC
- ASP
- IR



| MODEL NO. | TG4Z2813FCS-IR |
|---------------------------------------|------------------------------------|
| Format (") | 1/3 |
| Mount | CS |
| Focal Length (mm) | 2.8-12 |
| Aperture (F) | 1.3-360 |
| Angle of View (HOR)° | 102.2-23.7 |
| M.O.D. (m) | 0.3 |
| Effective Aperture | Front (φmm) 23.0 Rear (φmm) 7.4 |
| Front Filter Thread (φMxP=) | - |
| Dimensions (φD), (φxHxD) or (WxHxD)mm | φ37.5 × 48 × 56 |
| Weight (g) | 71 |

Dimensions



FEATURE INDICATION
 MODEL NAME
 CODING RULE
 MANUAL IRIS
 AUTO IRIS
 VARI-FOCAL
 MANUAL IRIS
 AUTO IRIS
 MANUAL ZOOM
 MOTORIZED ZOOM
 PINHOLE ACCESSORIES
 MEGA PIXEL & FA
 TECHNICAL INFORMATION
 ANGLE OF VIEW

FEATURE INDICATION
MODEL NAME CODING RULE
MANUAL IRIS
VARI-FOCAL AUTO IRIS
VARI-FOCAL AUTO IRIS
MANUAL ZOOM
MOTORIZED ZOOM
PINHOLE ACCESSORIES
MEGAPIXEL & FA
TECHNICAL INFORMATION
ANGLE OF VIEW

VARI

DC

ASP

IR

MEGA PIXEL

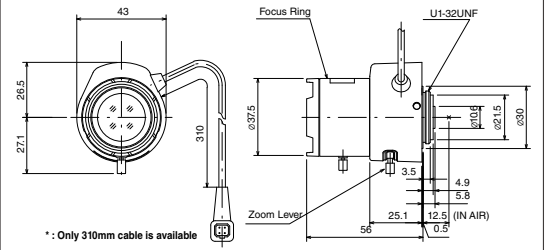


NEW

| MODEL NO. | TG4Z2813FCS-MPIR |
|--|------------------|
| Format (") | 1/3 |
| Mount | CS |
| Focal Length (mm) | 2.8-12 |
| Aperture (F) | 1.3-360 |
| Angle of View (HOR)° | 102.2-23.7 |
| M.O.D. (m) | 0.3 |
| Effective Aperture | Front (φmm) 23.0 |
| | Rear (φmm) 7.4 |
| Front Filter Thread (φMxP=) | - |
| Dimensions (φxD, (φxHxD) or (WxHxD)mm) | φ37.5 × 45 × 56 |
| Weight (g) | 71 |

Dimensions

unit:mm



VARI

DC

TELE

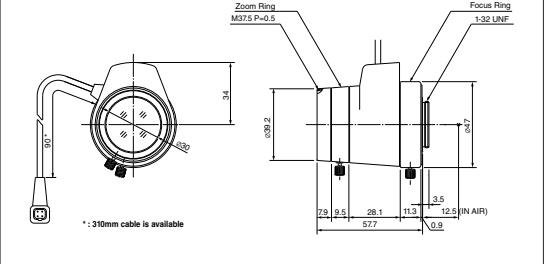
ASP



| MODEL NO. | TG10Z0513FCS-2 |
|--|---------------------|
| Format (") | 1/3 |
| Mount | CS |
| Focal Length (mm) | 5-50 |
| Aperture (F) | 1.3-360C |
| Angle of View (HOR)° | 51.8-5.6 |
| M.O.D. (m) | 0.8 |
| Effective Aperture | Front (φmm) 29.5 |
| | Rear (φmm) 8.7 |
| Front Filter Thread (φMxP=) | 37.5 × 0.5 |
| Dimensions (φxD, (φxHxD) or (WxHxD)mm) | φ41.7 × 57.5 × 57.7 |
| Weight (g) | 140 |

Dimensions

unit:mm



VARI

DC

TELE

ASP

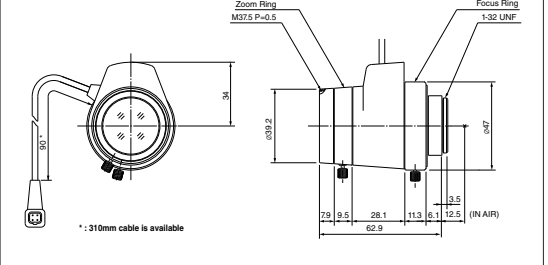
IR



| MODEL NO. | TG5Z8513FCS-IR |
|--|---------------------|
| Format (") | 1/3 |
| Mount | CS |
| Focal Length (mm) | 8.5-40 |
| Aperture (F) | 1.3-360C |
| Angle of View (HOR)° | 33.5-7.1 |
| M.O.D. (m) | 0.8 |
| Effective Aperture | Front (φmm) 27.0 |
| | Rear (φmm) 9.3 |
| Front Filter Thread (φMxP=) | 37.5 × 0.5 |
| Dimensions (φxD, (φxHxD) or (WxHxD)mm) | φ41.7 × 57.5 × 62.9 |
| Weight (g) | 114 |

Dimensions

unit:mm



VARI-FOCAL

DC DRIVE

VARI-FOCAL
AUTO IRIS

VARI

DC

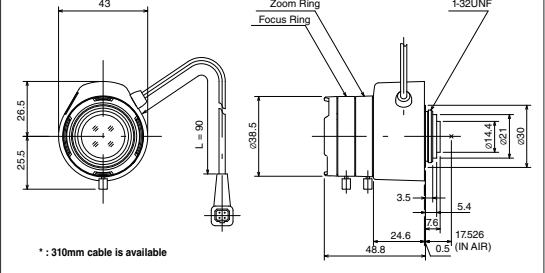
MEGA
PIXEL



NEW

| MODEL NO. | HG2Z0414FC-MP |
|-----------------------------|-------------------------------------|
| Format (") | 1/2 |
| Mount | C |
| Focal Length (mm) | 4.0-8.0 |
| Aperture (F) | 1.4-360 |
| Angle of View (HOR)° | 90.4-470 |
| M.O.D. (m) | 0.5 |
| Effective Aperture | Front (φmm) 22.2 Rear (φmm) 10.7 |
| Front Filter Thread (φMxP=) | - |
| Dimensions | $\phi 38.5 \times 48 \times 48.8$ |
| Weight (g) | 75 |

Dimensions



VARI

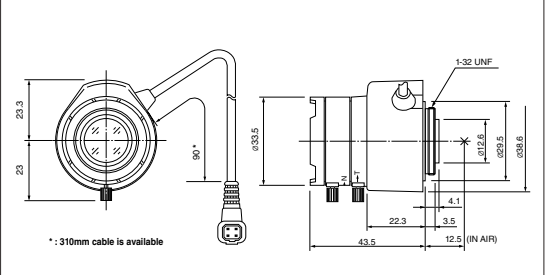
DC

IR



| MODEL NO. | HG2Z4516FCS-2 |
|-----------------------------|-------------------------------------|
| Format (") | 1/2 |
| Mount | CS |
| Focal Length (mm) | 4.5-10 |
| Aperture (F) | 1.6-360C |
| Angle of View (HOR)° | 81.3-38.2 |
| M.O.D. (m) | 0.3 |
| Effective Aperture | Front (φmm) 18.6 Rear (φmm) 9.0 |
| Front Filter Thread (φMxP=) | - |
| Dimensions | $\phi 33.5 \times 42.6 \times 43.5$ |
| Weight (g) | 54 |

Dimensions



VARI

DC

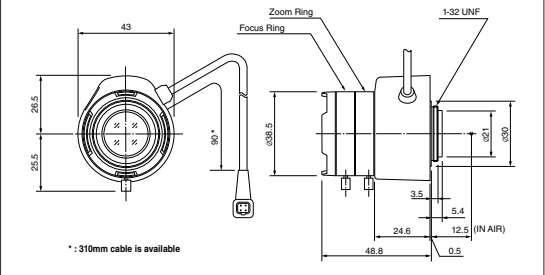
ASP

IR



| MODEL NO. | HG3Z4512FCS-IR |
|-----------------------------|-------------------------------------|
| Format (") | 1/2 |
| Mount | CS |
| Focal Length (mm) | 4.5-12.5 |
| Aperture (F) | 1.2-360 |
| Angle of View (HOR)° | 83.7-30.1 |
| M.O.D. (m) | 0.3 |
| Effective Aperture | Front (φmm) 19.9 Rear (φmm) 9.9 |
| Front Filter Thread (φMxP=) | - |
| Dimensions | $\phi 38.5 \times 47.5 \times 48.8$ |
| Weight (g) | 68 |

Dimensions



VARI

DC

TELE

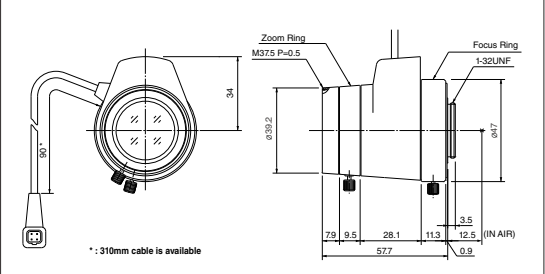
ASP

IR



| MODEL NO. | HG3Z1014FCS |
|-----------------------------|-------------------------------------|
| Format (") | 1/2 |
| Mount | CS |
| Focal Length (mm) | 10-30 |
| Aperture (F) | 1.4-360C |
| Angle of View (HOR)° | 35.8-12.5 |
| M.O.D. (m) | 0.6 |
| Effective Aperture | Front (φmm) 26.6 Rear (φmm) 9.0 |
| Front Filter Thread (φMxP=) | 37.5 × 0.5 |
| Dimensions | $\phi 41.7 \times 57.5 \times 57.7$ |
| Weight (g) | 120 |

Dimensions



※ HG3Z1014 Series 1/2type lenses have no focus shift with or without IR lighting only when used with 1/2type cameras. If these lenses are used with 1/3type cameras, some focus shift may occur with IR lighting.

FEATURE
INDICATION

MODEL NAME
CODING RULE

MANUAL IRIS

AUTO IRIS

VARI-FOCAL
IRIS

MANUAL
ZOOM

AUTO IRIS

VARI-FOCAL
AUTO IRIS

MANUAL
ZOOM

AUTO IRIS

MANUAL
ZOOM

AUTO IRIS

MANUAL
ZOOM

MOTORIZED
ZOOM

PINHOLE
ACCESSORIES

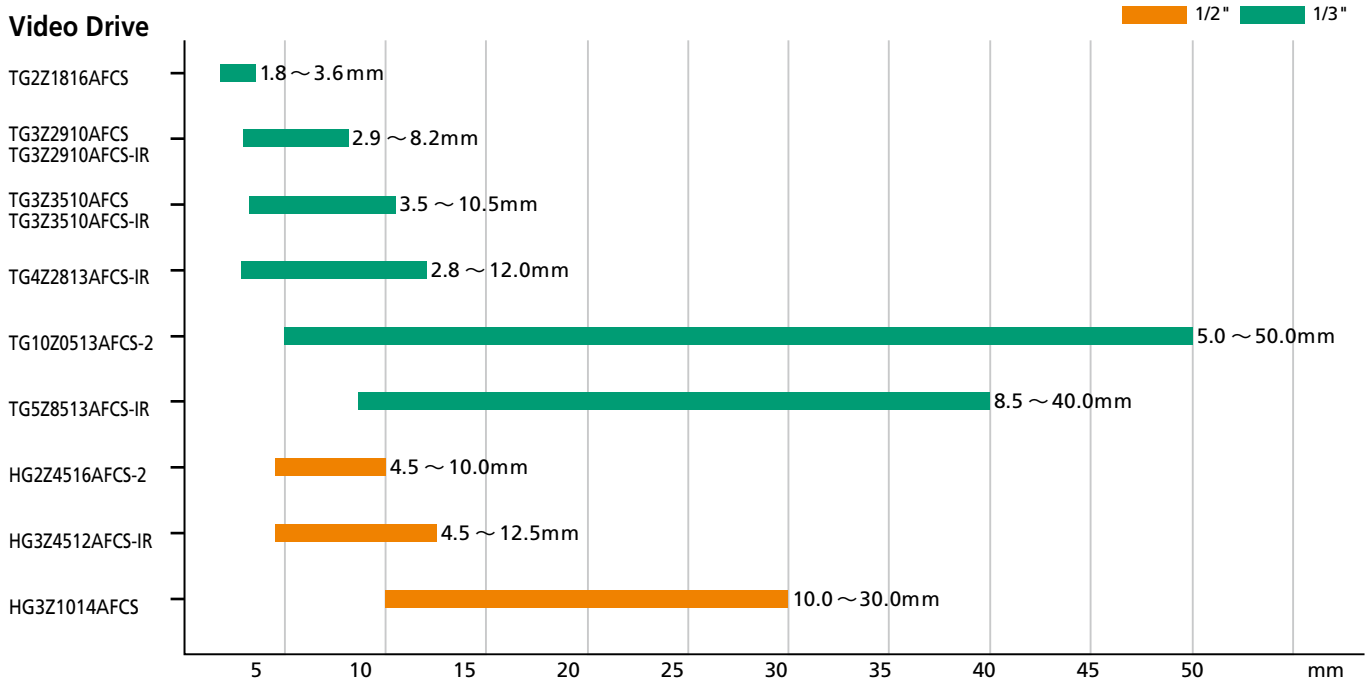
MEGAPIXEL
& FA

TECHNICAL
INFORMATION

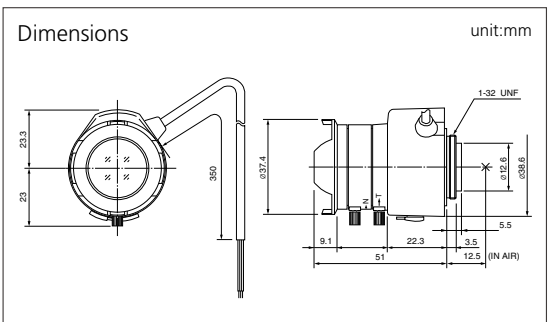
ANGLE OF
VIEW

Vari-Focal Lens Comparison

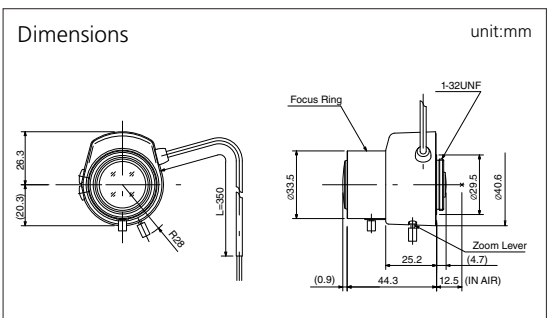
Video Drive



| MODEL NO. | TG2Z1816AFCS |
|------------------------------------|------------------------------------|
| Format (") | 1/3 |
| Mount | CS |
| Focal Length (mm) | 1.8-3.6 |
| Aperture (F) | 1.6-360C |
| Angle of View (HOR)° | 144.2-79.4 |
| M.O.D. (m) | 0.2 |
| Effective Aperture | Front (φmm) 22.0 Rear (φmm) 7.9 |
| Front Filter Thread (φMxP=) | - |
| Dimensions (φxD, φxHxD or WxHxD)mm | φ37.4 × 42.6 × 51 |
| Weight (g) | 83 |



| MODEL NO. | TG3Z2910AFCS |
|------------------------------------|------------------------------------|
| Format (") | 1/3 |
| Mount | CS |
| Focal Length (mm) | 2.9-8.2 |
| Aperture (F) | 1.0-360C |
| Angle of View (HOR)° | 98.3-35.2 |
| M.O.D. (m) | 0.5 |
| Effective Aperture | Front (φmm) 18.8 Rear (φmm) 9.0 |
| Front Filter Thread (φMxP=) | - |
| Dimensions (φxD, φxHxD or WxHxD)mm | φ33.5 × 46.6 × 44.3 |
| Weight (g) | 51 |



VARI

VIDEO

WIDE

VARI

VIDEO

F1.0

ASP

NEW

VARI-FOCAL VIDEO DRIVE

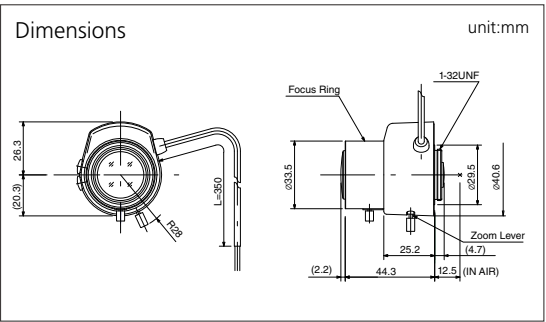


- VARI
- VIDEO
- F1.0
- ASP
- IR



NEW

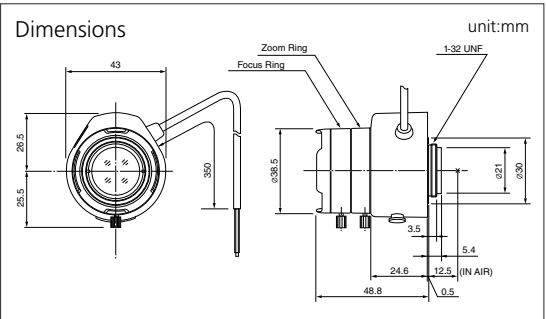
| MODEL NO. | TG3Z2910AFCS-IR |
|-----------------------------|-------------------------------------|
| Format (") | 1/3 |
| Mount | CS |
| Focal Length (mm) | 2.9-8.2 |
| Aperture (F) | 1.0-360C |
| Angle of View (HOR)° | 95.0-35.6 |
| M.O.D. (m) | 0.5 |
| Effective Aperture | Front (φmm) 19.0 Rear (φmm) 8.5 |
| Front Filter Thread (φMxP=) | - |
| Dimensions | $\phi 33.5 \times 46.6 \times 44.3$ |
| Weight (g) | 54 |



- VARI
- VIDEO
- F1.0
- ASP



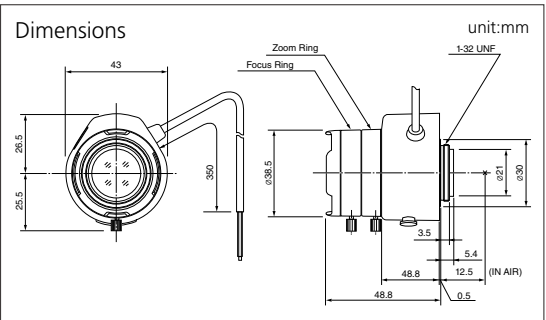
| MODEL NO. | TG3Z3510AFCS |
|-----------------------------|-------------------------------------|
| Format (") | 1/3 |
| Mount | CS |
| Focal Length (mm) | 3.5-10.5 |
| Aperture (F) | 1.0-360 |
| Angle of View (HOR)° | 81.6-27.2 |
| M.O.D. (m) | 0.3 |
| Effective Aperture | Front (φmm) 18.5 Rear (φmm) 10.1 |
| Front Filter Thread (φMxP=) | - |
| Dimensions | $\phi 38.5 \times 48 \times 48.8$ |
| Weight (g) | 70 |



- VARI
- VIDEO
- F1.0
- ASP
- IR



| MODEL NO. | TG3Z3510AFCS-IR |
|-----------------------------|-------------------------------------|
| Format (") | 1/3 |
| Mount | CS |
| Focal Length (mm) | 3.5-10.5 |
| Aperture (F) | 1.0-360 |
| Angle of View (HOR)° | 81.8-27.2 |
| M.O.D. (m) | 0.3 |
| Effective Aperture | Front (φmm) 18.6 Rear (φmm) 10.2 |
| Front Filter Thread (φMxP=) | - |
| Dimensions | $\phi 38.5 \times 48 \times 48.8$ |
| Weight (g) | 70 |

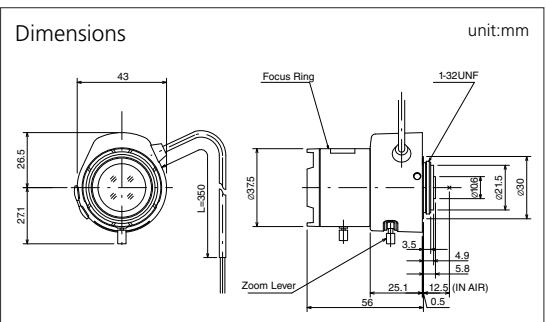


- VARI
- VIDEO
- ASP
- IR



NEW

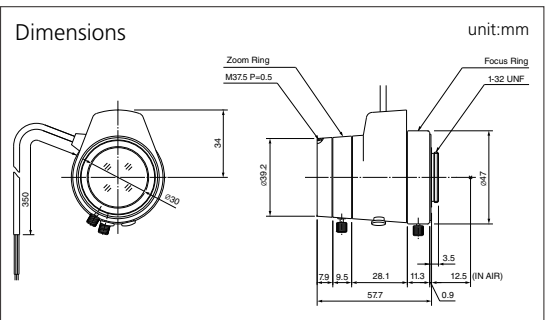
| MODEL NO. | TG4Z2813AFCS-IR |
|-----------------------------|------------------------------------|
| Format (") | 1/3 |
| Mount | CS |
| Focal Length (mm) | 2.8-12 |
| Aperture (F) | 1.3-360 |
| Angle of View (HOR)° | 102.2-23.7 |
| M.O.D. (m) | 0.3 |
| Effective Aperture | Front (φmm) 23.0 Rear (φmm) 7.4 |
| Front Filter Thread (φMxP=) | - |
| Dimensions | $\phi 37.5 \times 48 \times 56$ |
| Weight (g) | 74 |



- VARI
- VIDEO
- TELE
- ASP



| MODEL NO. | TG10Z0513AFCS-2 |
|-----------------------------|-------------------------------------|
| Format (") | 1/3 |
| Mount | CS |
| Focal Length (mm) | 5-50 |
| Aperture (F) | 1.3-360C |
| Angle of View (HOR)° | 51.8-5.6 |
| M.O.D. (m) | 0.8 |
| Effective Aperture | Front (φmm) 29.5 Rear (φmm) 8.7 |
| Front Filter Thread (φMxP=) | 37.5 × 0.5 |
| Dimensions | $\phi 41.7 \times 57.5 \times 57.7$ |
| Weight (g) | 145 |



- FEATURE INDICATION
- MODEL NAME CODING RULE
- MANUAL IRIS
- AUTO IRIS
- VARI-FOCAL IRIS
- VARI-FOCAL AUTO IRIS
- MANUAL ZOOM
- MOTORIZED ZOOM
- PINHOLE ACCESSORIES
- MEGAPIXEL & FA
- TECHNICAL INFORMATION
- ANGLE OF VIEW

FEATURE INDICATION MODEL NAME CODING RULE MANUAL IRIS VARI-FOCAL MANUAL IRIS VARI-FOCAL AUTO IRIS VARI-FOCAL AUTO IRIS MANUAL ZOOM MOTORIZED ZOOM PINHOLE ACCESSORIES MEGAPIXEL & FA TECHNICAL INFORMATION ANGLE OF VIEW

VARI

VIDEO

TELE

ASP

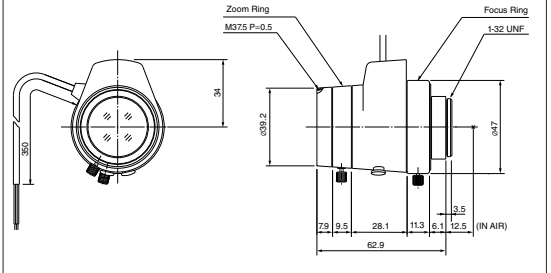
IR



| MODEL NO. | TG5Z8513AFCS-IR |
|--------------------------------------|---------------------|
| Format (") | 1/3 |
| Mount | CS |
| Focal Length (mm) | 8.5-40 |
| Aperture (F) | 1.3-360C |
| Angle of View (HOR)° | 33.5-7.1 |
| M.O.D. (m) | 0.8 |
| Effective Aperture | Front (φmm) 27.0 |
| | Rear (φmm) 9.3 |
| Front Filter Thread (φMxP=) | 37.5 × 0.5 |
| Dimensions (φD), (φHxD) or (WxHxD)mm | φ41.7 × 57.5 × 62.9 |
| Weight (g) | 115 |

Dimensions

unit:mm



VARI

VIDEO

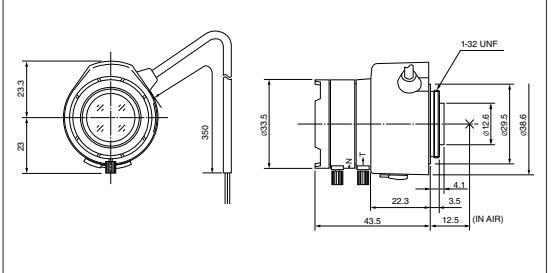
IR



| MODEL NO. | HG2Z4516AFCS-2 |
|--------------------------------------|---------------------|
| Format (") | 1/2 |
| Mount | CS |
| Focal Length (mm) | 4.5-10 |
| Aperture (F) | 1.6-360C |
| Angle of View (HOR)° | 81.3-38.2 |
| M.O.D. (m) | 0.3 |
| Effective Aperture | Front (φmm) 18.6 |
| | Rear (φmm) 9.0 |
| Front Filter Thread (φMxP=) | - |
| Dimensions (φD), (φHxD) or (WxHxD)mm | φ33.5 × 42.6 × 43.5 |
| Weight (g) | 56 |

Dimensions

unit:mm



VARI

VIDEO

ASP

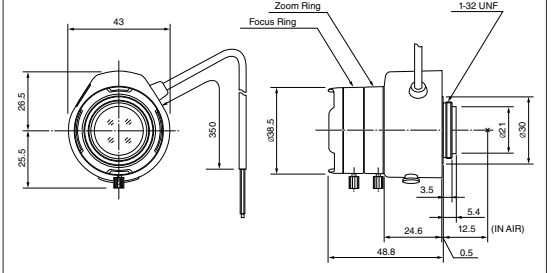
IR



| MODEL NO. | HG3Z4512AFCS-IR |
|--------------------------------------|---------------------|
| Format (") | 1/2 |
| Mount | CS |
| Focal Length (mm) | 4.5-12.5 |
| Aperture (F) | 1.2-360 |
| Angle of View (HOR)° | 83.7-30.1 |
| M.O.D. (m) | 0.3 |
| Effective Aperture | Front (φmm) 19.9 |
| | Rear (φmm) 9.9 |
| Front Filter Thread (φMxP=) | - |
| Dimensions (φD), (φHxD) or (WxHxD)mm | φ38.5 × 47.5 × 48.8 |
| Weight (g) | 73 |

Dimensions

unit:mm



VARI

VIDEO

ASP

TELE

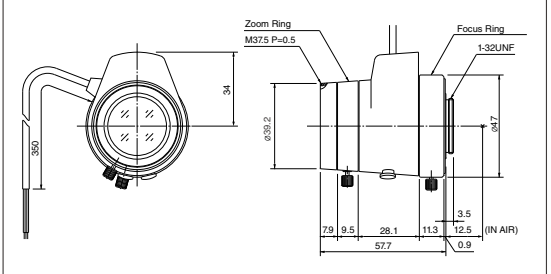
IR



| MODEL NO. | HG3Z1014AFCS |
|--------------------------------------|---------------------|
| Format (") | 1/2 |
| Mount | CS |
| Focal Length (mm) | 10-30 |
| Aperture (F) | 1.4-360C |
| Angle of View (HOR)° | 35.8-12.5 |
| M.O.D. (m) | 0.6 |
| Effective Aperture | Front (φmm) 26.6 |
| | Rear (φmm) 9.0 |
| Front Filter Thread (φMxP=) | 37.5 × 0.5 |
| Dimensions (φD), (φHxD) or (WxHxD)mm | φ41.7 × 57.5 × 57.7 |
| Weight (g) | 125 |

Dimensions

unit:mm



※ HG3Z1014 Series 1/2type lenses have no focus shift with or without IR lighting only when used with 1/2type cameras. If these lenses are used with 1/3type cameras, some focus shift may occur with IR lighting.

MANUAL ZOOM

MANUAL IRIS



ZOOM

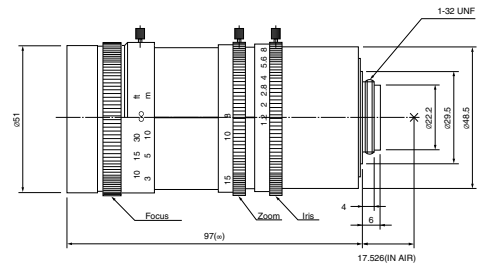
MANUAL



| MODEL NO. | H6Z0812 |
|-----------------------------|---|
| Format (") | 1/2 |
| Mount | C |
| Focal Length (mm) | 8-48 |
| Aperture (F) | 1.2-16C |
| Angle of View (HOR)° | 44.6-8.0 |
| M.O.D. (m) | 1.2 |
| Effective Aperture | Front (φmm) 32.9 Rear (φmm) 16.6 |
| Front Filter Thread (φMxP=) | 49.0 × 0.75 |
| Dimensions | ^{(φxD),(φxHxD)} or (WxHxD)mm φ51.8 × 97 |
| Weight (g) | 305 |

Dimensions

unit:mm



ZOOM

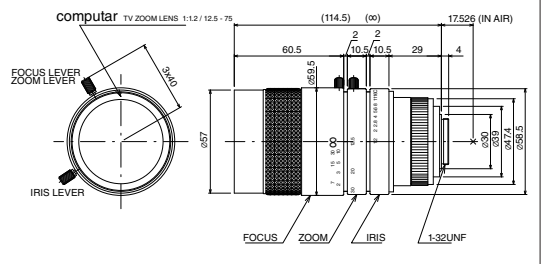
MANUAL



| MODEL NO. | M6Z1212-3S |
|-----------------------------|--|
| Format (") | 2/3 |
| Mount | C |
| Focal Length (mm) | 12.5-75 |
| Aperture (F) | 1.2-16C |
| Angle of View (HOR)° | 38.3-6.7 |
| M.O.D. (m) | 1.0 |
| Effective Aperture | Front (φmm) 46.5 Rear (φmm) 15.6 |
| Front Filter Thread (φMxP=) | 55.0 × 0.75 |
| Dimensions | ^{(φxD),(φxHxD)} or (WxHxD)mm φ59.9 × 114.5 |
| Weight (g) | 483 |

Dimensions

unit:mm



FEATURE INDICATION

MODEL NAME CODING RULE

MANUAL IRIS

AUTO IRIS

VARI-FOCAL MANUAL IRIS

VARI-FOCAL AUTO IRIS

MANUAL ZOOM

MOTORIZED ZOOM

PINHOLE ACCESSORIES

MEGAPIXEL & FA

TECHNICAL INFORMATION

ANGLE OF VIEW

MANUAL ZOOM
AUTO IRIS

MANUAL ZOOM

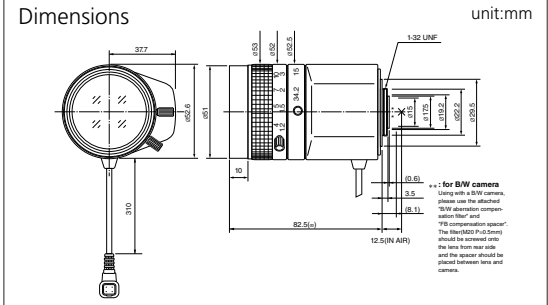
DC DRIVE

FEATURE INDICATION
MODEL NAME CODING RULE
MANUAL IRIS
VARI-FOCAL MANUAL IRIS
VARI-FOCAL AUTO IRIS
MANUAL ZOOM
MOTORIZED ZOOM
PINHOLE ACCESSORIES
MEGAPIXEL & FA
TECHNICAL INFORMATION
ANGLE OF VIEW

- ZOOM
- DC
- F1.0
- SPOT FILTER



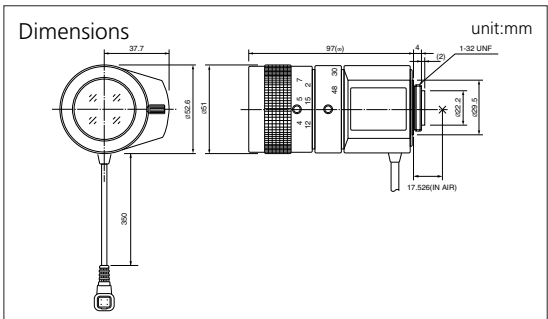
| MODEL NO. | T6Z5710AIDC-CS |
|---------------------------------------|------------------|
| Format (") | 1/3 |
| Mount | CS |
| Focal Length (mm) | 5.7-34.2 |
| Aperture (F) | 1.0-360C |
| Angle of View (HOR)° | 45.9-8.1 |
| M.O.D. (m) | 1.2 |
| Effective Aperture | Front (φmm) 41.0 |
| | Rear (φmm) 10.2 |
| Front Filter Thread (φMxP=) | 49.0 × 0.75 |
| Dimensions (φxD) (φxHxD) or (WxHxD)mm | φ53 × 64 × 82.5 |
| Weight (g) | 295 |



- ZOOM
- DC
- SPOT FILTER



| MODEL NO. | H6Z0812AIDC |
|---------------------------------------|------------------|
| Format (") | 1/2 |
| Mount | C |
| Focal Length (mm) | 8-48 |
| Aperture (F) | 1.2-560C |
| Angle of View (HOR)° | 44.6-8.0 |
| M.O.D. (m) | 1.2 |
| Effective Aperture | Front (φmm) 39.2 |
| | Rear (φmm) 16.6 |
| Front Filter Thread (φMxP=) | 49.0 × 0.75 |
| Dimensions (φxD) (φxHxD) or (WxHxD)mm | φ52.6 × 64 × 97 |
| Weight (g) | 295 |



MANUAL ZOOM
AUTO IRIS

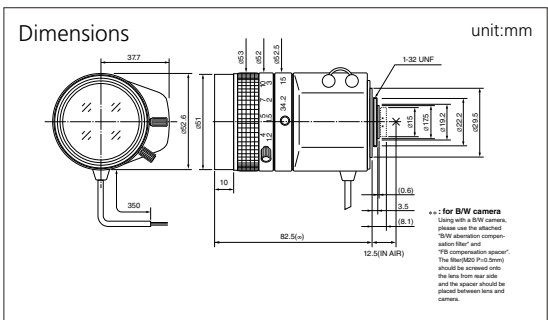
MANUAL ZOOM

VIDEO DRIVE

- ZOOM
- VIDEO
- F1.0
- SPOT FILTER



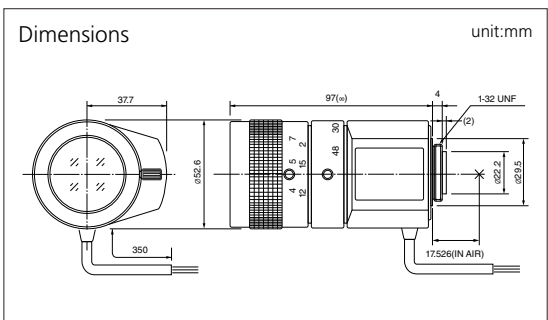
| MODEL NO. | T6Z5710AIVD-CS |
|---------------------------------------|------------------|
| Format (") | 1/3 |
| Mount | CS |
| Focal Length (mm) | 5.7-34.2 |
| Aperture (F) | 1.0-360C |
| Angle of View (HOR)° | 45.9-8.1 |
| M.O.D. (m) | 1.2 |
| Effective Aperture | Front (φmm) 41.0 |
| | Rear (φmm) 10.2 |
| Front Filter Thread (φMxP=) | 49.0 × 0.75 |
| Dimensions (φxD) (φxHxD) or (WxHxD)mm | φ53 × 64 × 82.5 |
| Weight (g) | 295 |



- ZOOM
- VIDEO
- SPOT FILTER



| MODEL NO. | H6Z0812AIVD |
|---------------------------------------|------------------|
| Format (") | 1/2 |
| Mount | C |
| Focal Length (mm) | 8-48 |
| Aperture (F) | 1.2-560C |
| Angle of View (HOR)° | 44.6-8.0 |
| M.O.D. (m) | 1.2 |
| Effective Aperture | Front (φmm) 39.2 |
| | Rear (φmm) 16.6 |
| Front Filter Thread (φMxP=) | 49.0 × 0.75 |
| Dimensions (φxD) (φxHxD) or (WxHxD)mm | φ52.6 × 64 × 97 |
| Weight (g) | 295 |



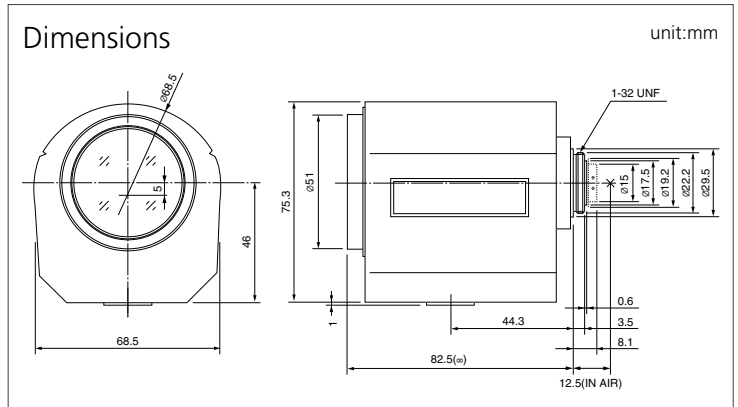
T6Z5710 Series

f 5.7-34.2mm, F1.0

x6



| | |
|-----------------------------|--------------------|
| Format (") | 1/3 |
| Mount | CS |
| Focal Length (mm) | 5.7-34.2 |
| Angle of View (HOR)° | 45.9-8.1 |
| M.O.D. (m) | 1.2 |
| Effective Aperture | Front (φmm) 41.0 |
| | Rear (φmm) 10.2 |
| Front Filter Thread (φMxP=) | 49.0 × 0.75 |
| Dimensions (WxHxD)mm | 68.5 × 76.3 × 82.5 |



| NO. | MODEL NO. | | | | Aperture (F) | Weight (g) |
|-----|----------------|------|---------|------|--------------------|------------|
| 1 | T6Z5710M-CS | ZOOM | 3 MOTOR | F1.0 | 1.0-16C | 430 |
| 2 | T6Z5710MP-CS | ZOOM | 3 MOTOR | F1.0 | PRESET | 470 |
| 3 | T6Z5710MS-CS | ZOOM | 3 MOTOR | F1.0 | SPOT FILTER | 430 |
| 4 | T6Z5710MSP-CS | ZOOM | 3 MOTOR | F1.0 | PRESET SPOT FILTER | 470 |
| 5 | T6Z5710AMS-CS | ZOOM | VIDEO | F1.0 | SPOT FILTER | 450 |
| 6 | T6Z5710AMSP-CS | ZOOM | VIDEO | F1.0 | PRESET SPOT FILTER | 490 |
| 7 | T6Z5710DC-CS | ZOOM | DC | F1.0 | SPOT FILTER | 440 |
| 8 | T6Z5710PDC-CS | ZOOM | DC | F1.0 | PRESET SPOT FILTER | 480 |

FEATURE INDICATION

MODEL NAME CODING RULE

MANUAL IRIS

AUTO IRIS

VARI-FOCAL MANUAL IRIS

VARI-FOCAL AUTO IRIS

MANUAL ZOOM

MOTORIZED ZOOM

PINHOLE ACCESSORIES

MEGAPIXEL & FA

TECHNICAL INFORMATION

ANGLE OF VIEW

T10Z5712 Series

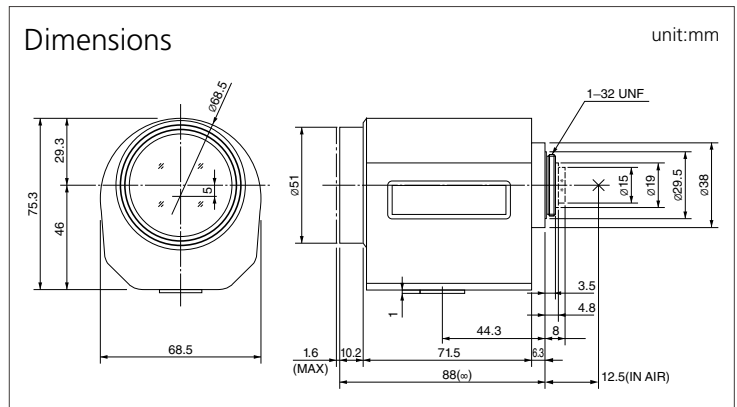
f 5.7-57mm, F1.2

x 10



FEATURE INDICATION
MODEL NAME
CODING RULE
MANUAL IRIS
AUTO IRIS
VARI-FOCAL
MANUAL IRIS
VARI-FOCAL
AUTO IRIS
MANUAL ZOOM
MOTORIZED ZOOM
PINHOLE ACCESSORIES
MEGAPIXEL & FA
TECHNICAL INFORMATION
ANGLE OF VIEW

| | |
|-----------------------------|------------------|
| Format (") | 1/3 |
| Mount | CS |
| Focal Length (mm) | 5.7-57 |
| Angle of View (HOR)° | 44.6-4.8 |
| M.O.D. (m) | 1.8 |
| Effective Aperture | Front (φmm) 45.0 |
| | Rear (φmm) 8.6 |
| Front Filter Thread (φMxP=) | 49.0 × 0.75 |
| Dimensions (WxHxD)mm | 68.5 × 76.3 × 88 |



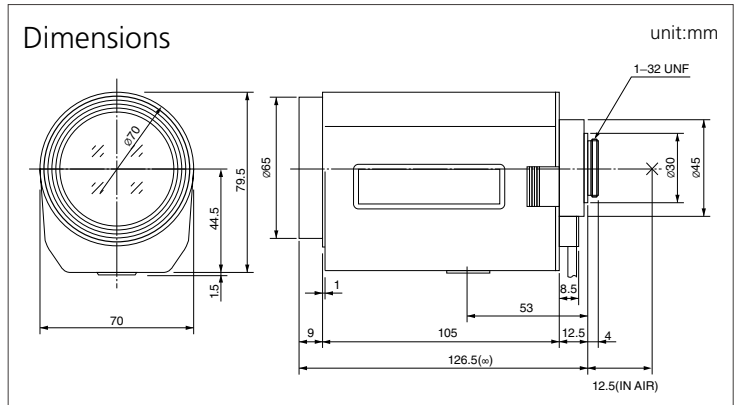
| NO. | MODEL NO. | | | Aperture (F) | Weight (g) |
|-----|-----------------|------|----------------------------|--------------|------------|
| 1 | T10Z5712M-CS | ZOOM | 3 MOTOR | 1.2-22C | 450 |
| 2 | T10Z5712MP-CS | ZOOM | 3 MOTOR PRESET | 1.2-22C | 490 |
| 3 | T10Z5712MS-CS | ZOOM | 3 MOTOR SPOT FILTER | 1.2-560C | 450 |
| 4 | T10Z5712MSP-CS | ZOOM | 3 MOTOR PRESET SPOT FILTER | 1.2-560C | 490 |
| 5 | T10Z5712AMS-CS | ZOOM | VIDEO SPOT FILTER | 1.2-560C | 470 |
| 6 | T10Z5712AMSP-CS | ZOOM | VIDEO PRESET SPOT FILTER | 1.2-560C | 510 |
| 7 | T10Z5712DC-CS | ZOOM | DC SPOT FILTER | 1.2-560C | 460 |
| 8 | T10Z5712PDC-CS | ZOOM | DC PRESET SPOT FILTER | 1.2-560C | 500 |

T21Z5816 Series f 5.8-121.8mm, F1.6

x21



| | |
|-----------------------------|------------------|
| Format (") | 1/3 |
| Mount | CS |
| Focal Length (mm) | 5.8-121.8 |
| Angle of View (HOR)° | 44.8-2.3 |
| M.O.D. (m) | 1.5 |
| Effective Aperture | Front (φmm) 53.2 |
| | Rear (φmm) 10.6 |
| Front Filter Thread (φMxP=) | 62.0 × 0.75 |
| Dimensions (WxHxD)mm | 70 × 81 × 126.5 |



| NO. | MODEL NO. | | | | | Aperture (F) | Weight (g) |
|-----|------------------|------|---------|--------|-------------|--------------|------------|
| 1 | T21Z5816M-CS | ZOOM | 3 MOTOR | | | 1.6-22C | 665 |
| 2 | T21Z5816MP-CS | ZOOM | 3 MOTOR | PRESET | | 1.6-22C | 700 |
| 3 | T21Z5816MS-CS | ZOOM | 3 MOTOR | | SPOT FILTER | 1.6-560C | 665 |
| 4 | T21Z5816MSP-CS | ZOOM | 3 MOTOR | PRESET | SPOT FILTER | 1.6-560C | 700 |
| 5 | T21Z5816AMS-CS2 | ZOOM | VIDEO | | SPOT FILTER | 1.6-560C | 700 |
| 6 | T21Z5816AMSP-CS2 | ZOOM | VIDEO | PRESET | SPOT FILTER | 1.6-560C | 740 |
| 7 | T21Z5816DC-CS | ZOOM | DC | | SPOT FILTER | 1.6-560C | 650 |
| 8 | T21Z5816PDC-CS | ZOOM | DC | PRESET | SPOT FILTER | 1.6-560C | 690 |

FEATURE INDICATION
MODEL NAME CODING RULE
MANUAL IRIS
AUTO IRIS
VARI-FOCAL MANUAL IRIS
VARI-FOCAL AUTO IRIS
MANUAL ZOOM
MOTORIZED ZOOM
PINHOLE ACCESSORIES
MEGAPIXEL & FA
TECHNICAL INFORMATION
ANGLE OF VIEW

T34Z5518 Series

f 5.5-187mm, F1.8

x 34

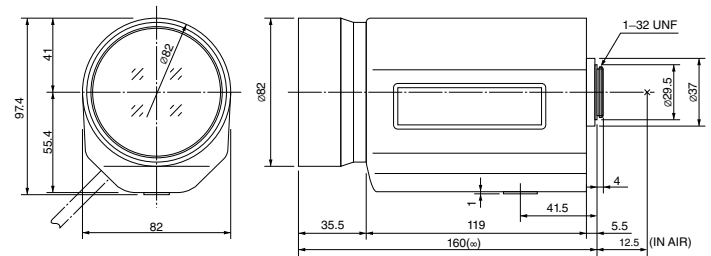


FEATURE INDICATION
MODEL NAME CODING RULE
MANUAL IRIS
AUTO IRIS
VARI-FOCAL MANUAL IRIS
VARI-FOCAL AUTO IRIS
MANUAL ZOOM
MOTORIZED ZOOM
PINHOLE ACCESSORIES
MEGAPIXEL & FA
TECHNICAL INFORMATION
ANGLE OF VIEW

| | |
|-----------------------------|------------------|
| Format (") | 1/3 |
| Mount | CS |
| Focal Length (mm) | 5.5-187 |
| Angle of View (HOR)° | 46.6-1.5 |
| M.O.D. (m) | 1.5 |
| Effective Aperture | Front (φmm) 70.0 |
| | Rear (φmm) 9.1 |
| Front Filter Thread (φMxP=) | 77.0 × 0.75 |
| Dimensions (WxHxD)mm | 82 × 97.4 × 160 |

Dimensions

unit:mm



| NO. | MODEL NO. | | | | Aperture (F) | Weight (g) | |
|-----|------------------|------|-------|-------------|--------------|------------|------|
| 1 | T34Z5518AMS-CS | ZOOM | VIDEO | SPOT FILTER | 1.8-560C | 1160 | |
| 2 | T34Z5518AMSP-CS | ZOOM | VIDEO | PRESET | SPOT FILTER | 1190 | |
| 3 | T34Z5518AMSR-CS | ZOOM | VIDEO | SPOT FILTER | OVERRIDE | 1150 | |
| 4 | T34Z5518AMSPR-CS | ZOOM | VIDEO | PRESET | SPOT FILTER | OVERRIDE | 1180 |
| 5 | T34Z5518DC-CS | ZOOM | DC | SPOT FILTER | 1.8-560C | 1110 | |
| 6 | T34Z5518PDC-CS | ZOOM | DC | PRESET | SPOT FILTER | 1150 | |

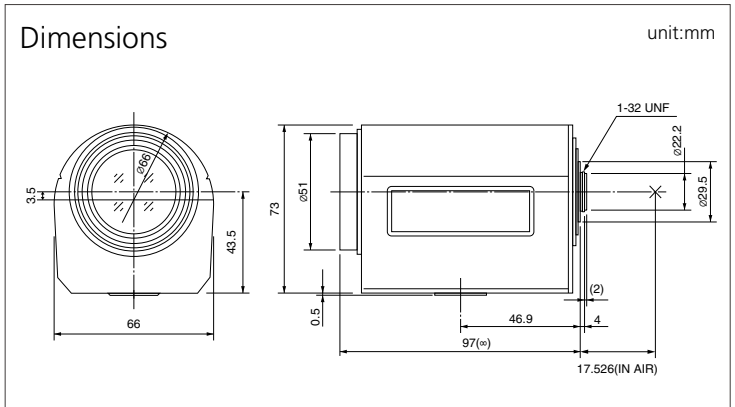
H6Z0812 Series

f 8-48mm, F1.2

x 6



| | | |
|-----------------------------|----------------|------|
| Format (") | 1/2 | |
| Mount | C | |
| Focal Length (mm) | 8-48 | |
| Angle of View (HOR)° | 44.6-8.0 | |
| M.O.D. (m) | 1.2 | |
| Effective Aperture | Front (φmm) | 39.2 |
| | Rear (φmm) | 16.6 |
| Front Filter Thread (φMxP=) | 49.0 × 0.75 | |
| Dimensions (WxHxD)mm | 66 × 73.5 × 97 | |



| NO. | MODEL NO. | | | | | Aperture (F) | Weight (g) |
|-----|-------------|------|---------|--------|-------------|--------------|------------|
| 1 | H6Z0812M | ZOOM | 3 MOTOR | | | 1.2-16C | 400 |
| 2 | H6Z0812MP | ZOOM | 3 MOTOR | PRESET | | 1.2-16C | 440 |
| 3 | H6Z0812MS | ZOOM | 3 MOTOR | | SPOT FILTER | 1.2-560C | 400 |
| 4 | H6Z0812MSP | ZOOM | 3 MOTOR | PRESET | SPOT FILTER | 1.2-560C | 440 |
| 5 | H6Z0812AMS | ZOOM | VIDEO | | SPOT FILTER | 1.2-560C | 420 |
| 6 | H6Z0812AMSP | ZOOM | VIDEO | PRESET | SPOT FILTER | 1.2-560C | 460 |

- FEATURE INDICATION
- MODEL NAME CODING RULE
- MANUAL IRIS
- AUTO IRIS
- VARI-FOCAL MANUAL IRIS
- VARI-FOCAL AUTO IRIS
- MANUAL ZOOM
- MOTORIZED ZOOM
- PINHOLE ACCESSORIES
- MEGAPIXEL & FA
- TECHNICAL INFORMATION
- ANGLE OF VIEW

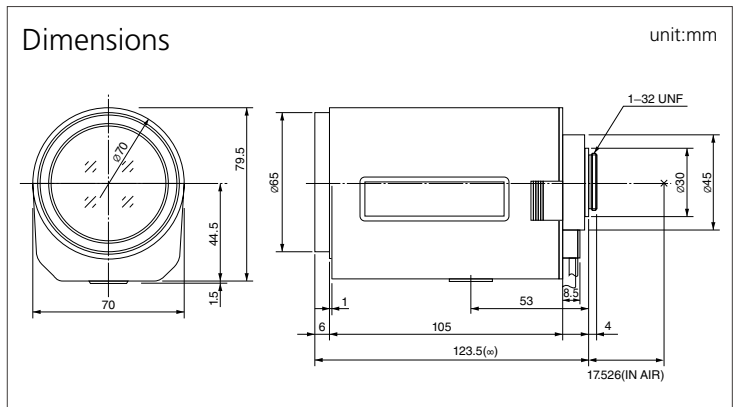
H10Z0812 Series

f 8-80mm, F1.2

x 10



| | |
|-----------------------------|------------------|
| Format (") | 1/2 |
| Mount | C |
| Focal Length (mm) | 8-80 |
| Angle of View (HOR)° | 44.0-4.7 |
| M.O.D. (m) | 1.5 |
| Effective Aperture | Front (φmm) 54.0 |
| | Rear (φmm) 14.0 |
| Front Filter Thread (φMxP=) | 62.0 × 0.75 |
| Dimensions (WxHxD)mm | 70 × 81 × 123.5 |



| NO. | MODEL NO. | | | Aperture (F) | Weight (g) |
|-----|----------------|------|----------------------------|--------------|------------|
| 1 | H10Z0812M | ZOOM | 3 MOTOR | 1.2-22C | 635 |
| 2 | H10Z0812MP | ZOOM | 3 MOTOR PRESET | 1.2-22C | 670 |
| 3 | H10Z0812MS | ZOOM | 3 MOTOR SPOT FILTER | 1.2-560C | 635 |
| 4 | H10Z0812MSP | ZOOM | 3 MOTOR PRESET SPOT FILTER | 1.2-560C | 670 |
| 5 | H10Z0812AMS-2 | ZOOM | VIDEO SPOT FILTER | 1.2-560C | 670 |
| 6 | H10Z0812AMSP-2 | ZOOM | VIDEO PRESET SPOT FILTER | 1.2-560C | 710 |

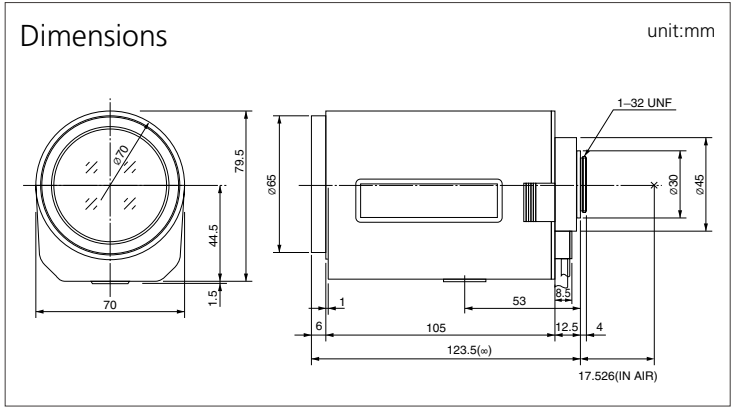
FEATURE INDICATION
MODEL NAME CODING RULE
MANUAL IRIS
AUTO IRIS
VARI-FOCAL MANUAL IRIS
VARI-FOCAL AUTO IRIS
MANUAL ZOOM
MOTORIZED ZOOM
PINHOLE ACCESSORIES
MEGAPIXEL & FA
TECHNICAL INFORMATION
ANGLE OF VIEW

H10Z1218 Series

f 12-120mm, F1.8 x 10



| | |
|-----------------------------|------------------|
| Format (") | 1/2 |
| Mount | C |
| Focal Length (mm) | 12-120 |
| Angle of View (HOR)° | 29.4-3.1 |
| M.O.D. (m) | 1.5 |
| Effective Aperture | Front (φmm) 54.0 |
| | Rear (φmm) 9.2 |
| Front Filter Thread (φMxP=) | 62.0 × 0.75 |
| Dimensions (WxHxD)mm | 70 × 81 × 123.5 |



| NO. | MODEL NO. | | | | | Aperture (F) | Weight (g) |
|-----|----------------|------|---------|--------|-------------|--------------|------------|
| 1 | H10Z1218M | ZOOM | 3 MOTOR | | | 1.8-22C | 635 |
| 2 | H10Z1218MP | ZOOM | 3 MOTOR | PRESET | | 1.8-22C | 670 |
| 3 | H10Z1218MS | ZOOM | 3 MOTOR | | SPOT FILTER | 1.8-560C | 635 |
| 4 | H10Z1218MSP | ZOOM | 3 MOTOR | PRESET | SPOT FILTER | 1.8-560C | 670 |
| 5 | H10Z1218AMS-2 | ZOOM | VIDEO | | SPOT FILTER | 1.8-560C | 670 |
| 6 | H10Z1218AMSP-2 | ZOOM | VIDEO | PRESET | SPOT FILTER | 1.8-560C | 710 |
| 7 | H10Z1218DC | ZOOM | DC | | SPOT FILTER | 1.8-560C | 630 |
| 8 | H10Z1218PDC | ZOOM | DC | PRESET | SPOT FILTER | 1.8-560C | 670 |

- FEATURE INDICATION
- MODEL NAME CODING RULE
- MANUAL IRIS
- AUTO IRIS
- VARI-FOCAL MANUAL IRIS
- VARI-FOCAL AUTO IRIS
- MANUAL ZOOM
- MOTORIZED ZOOM
- PINHOLE ACCESSORIES
- MEGAPIXEL & FA
- TECHNICAL INFORMATION
- ANGLE OF VIEW

H16Z7516 Series

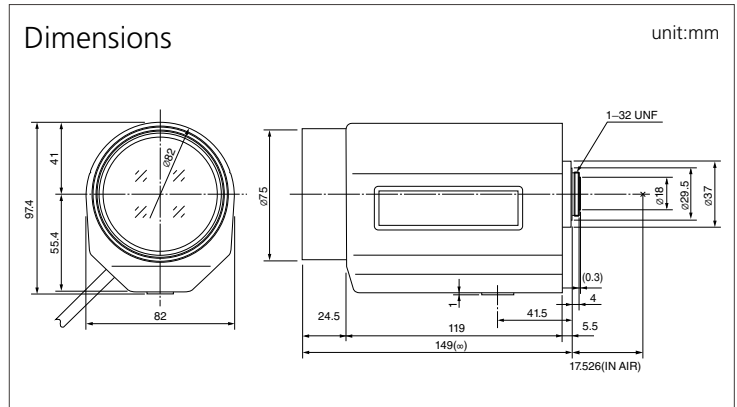
f 7.5-120mm, F1.6

x 16



FEATURE INDICATION
MODEL NAME
MANUAL IRIS
AUTO IRIS
VARI-FOCAL MANUAL IRIS
VARI-FOCAL AUTO IRIS
MANUAL ZOOM
MOTORIZED ZOOM
PINHOLE ACCESSORIES
MEGAPIXEL & FA
TECHNICAL INFORMATION
ANGLE OF VIEW

| | |
|-----------------------------|------------------|
| Format (") | 1/2 |
| Mount | C |
| Focal Length (mm) | 7.5-120 |
| Angle of View (HOR)° | 46.6-3.2 |
| M.O.D. (m) | 1.5 |
| Effective Aperture | Front (φmm) 66.4 |
| | Rear (φmm) 13.5 |
| Front Filter Thread (φMxP=) | 72.0 × 0.75 |
| Dimensions (WxHxD)mm | 82 × 97.4 × 149 |



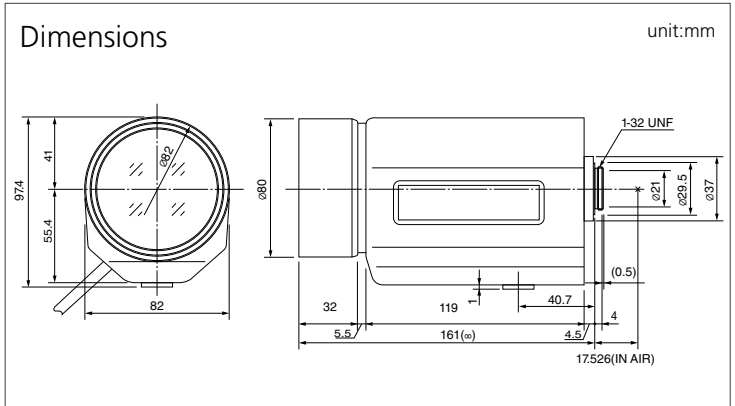
| NO. | MODEL NO. | | | | Aperture (F) | Weight (g) | |
|-----|---------------|------|-------|-------------|--------------|------------|------|
| 1 | H16Z7516AMS | ZOOM | VIDEO | SPOT FILTER | 1.6-560C | 1050 | |
| 2 | H16Z7516AMSP | ZOOM | VIDEO | PRESET | SPOT FILTER | 1080 | |
| 3 | H16Z7516AMSR | ZOOM | VIDEO | SPOT FILTER | OVERRIDE | 1040 | |
| 4 | H16Z7516AMSPR | ZOOM | VIDEO | PRESET | SPOT FILTER | OVERRIDE | 1070 |
| 5 | H16Z7516DC | ZOOM | DC | SPOT FILTER | | 1010 | |
| 6 | H16Z7516PDC | ZOOM | DC | PRESET | SPOT FILTER | 1050 | |

H16Z7516-IR Series

f 7.5-120mm, F1.6 x 16



| | |
|-----------------------------|-------------------------------------|
| Format (") | 1/2 |
| Mount | C |
| Focal Length (mm) | 7.5-120 |
| Angle of View (HOR)° | 47.0-3.1 |
| M.O.D. (m) | 1.5 |
| Effective Aperture | Front (φmm) 68.0 Rear (φmm) 14.3 |
| Front Filter Thread (φMxP=) | 77.0 × 0.75 |
| Dimensions (WxHxD)mm | 82 × 97.4 × 161.5 |



| NO. | MODEL NO. | | | | | | Aperture (F) | Weight (g) |
|-----|------------------|------|-------|-------------|-------------|---------|--------------|------------|
| 1 | H16Z7516AMS-IR | ZOOM | VIDEO | SPOT FILTER | | IR | 1.6-560C | 1160 |
| 2 | H16Z7516AMSP-IR | ZOOM | VIDEO | PRESET | SPOT FILTER | IR | 1.6-560C | 1180 |
| 3 | H16Z7516AMSR-IR | ZOOM | VIDEO | SPOT FILTER | VERRIDE | IR | 1.6-560C | 1185 |
| 4 | H16Z7516AMSPR-IR | ZOOM | VIDEO | PRESET | SPOT FILTER | VERRIDE | IR | 1215 |

Features of H16Z7516-IR Series

Infrared light increases at night because the wavelength distribution changes greatly between day and night. In case of night surveillance with infrared lighting, standard CCTV lenses cause a focus shift because of the difference in wavelength distribution, even when focused properly during the day.

Computer's new IR zoom lens utilizes a special optical glass material which minimizes light dispersion. As a result, refocusing is not required when used at night with infrared lighting. The lens also has a special multi-coating on all lens elements so that the lens transmits more light up to the infrared region. This provides a much more vivid picture when used at night with Day&Night Cameras or Ultra High Sensitivity Cameras.

- FEATURE INDICATION
- MODEL NAME CODING RULE
- MANUAL IRIS
- AUTO IRIS
- VARI-FOCAL MANUAL IRIS
- VARI-FOCAL AUTO IRIS
- MANUAL ZOOM
- MOTORIZED ZOOM
- PINHOLE ACCESSORIES
- MEGAPIXEL & FA
- TECHNICAL INFORMATION
- ANGLE OF VIEW

H30Z1015 Series

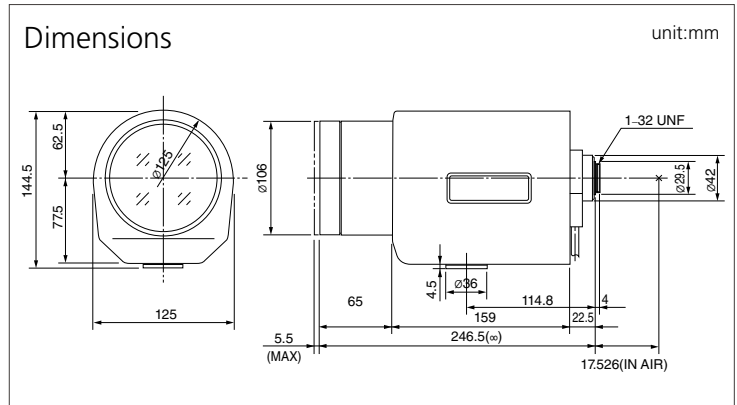
f 10-300mm, F1.5

x 30



FEATURE INDICATION
MODEL NAME
CODING RULE
MANUAL IRIS
AUTO IRIS
VARI-FOCAL
MANUAL IRIS
VARI-FOCAL
AUTO IRIS
MANUAL ZOOM
MOTORIZED ZOOM
PINHOLE ACCESSORIES
MEGAPIXEL & FA
TECHNICAL INFORMATION
ANGLE OF VIEW

| | |
|-----------------------------|---------------------|
| Format (") | 1/2 |
| Mount | C |
| Focal Length (mm) | 10-300 |
| Angle of View (HOR)° | 35.5-1.25 |
| M.O.D. (m) | 2.2 |
| Effective Aperture | Front (φmm) 94.0 |
| | Rear (φmm) 14.8 |
| Front Filter Thread (φMxP=) | 100 × 1 |
| Dimensions (WxHxD)mm | 125 × 144.5 × 246.5 |



| NO. | MODEL NO. | | | | Aperture (F) | Weight (g) | |
|-----|---------------|------|-------|-------------|--------------|------------|------|
| 1 | H30Z1015AMS | ZOOM | VIDEO | SPOT FILTER | 1.5-560C | 3170 | |
| 2 | H30Z1015AMSP | ZOOM | VIDEO | PRESET | SPOT FILTER | 3220 | |
| 3 | H30Z1015AMSR | ZOOM | VIDEO | SPOT FILTER | OVERRIDE | 3175 | |
| 4 | H30Z1015AMSPR | ZOOM | VIDEO | PRESET | SPOT FILTER | OVERRIDE | 3225 |

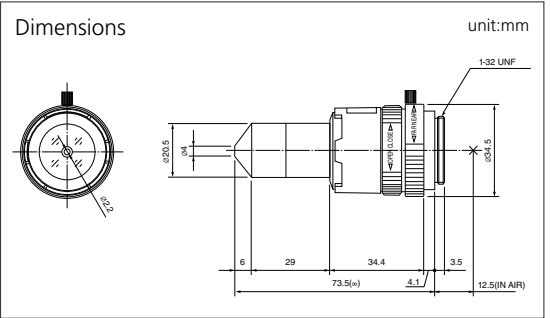
Features of H30Z1015 Series

This lens provides powerful zoom ratio(10-300mm) and the fastest F-stop (F1.5) in the CCTV market, making it ideal for long distance or low light surveillance. Typical applications include highway and traffic monitoring, port and harbor surveillance, airport surveillance and border patrol.

FIX
MANUAL



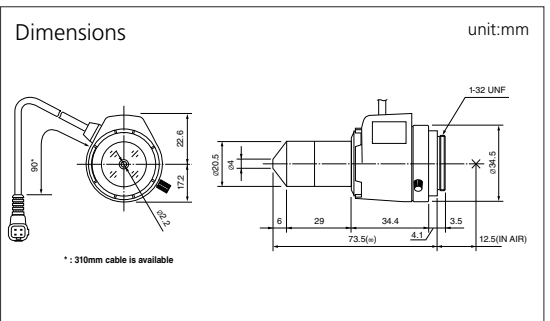
| MODEL NO. | T2625CS-P |
|-----------------------------|------------------------------|
| Format (") | 1/3 |
| Mount | CS |
| Focal Length (mm) | 2.6 |
| Aperture (F) | 2.5-32C |
| Angle of View (HOR)° | 83.2 |
| M.O.D. (m) | 0.2 |
| Effective Aperture | Front (φmm) 4.8 |
| | Rear (φmm) 11.5 |
| Front Filter Thread (φMxP=) | - |
| Dimensions | (φD), (φHxD) or (WxHxD)mm |
| Weight (g) | 80 |



FIX
DC



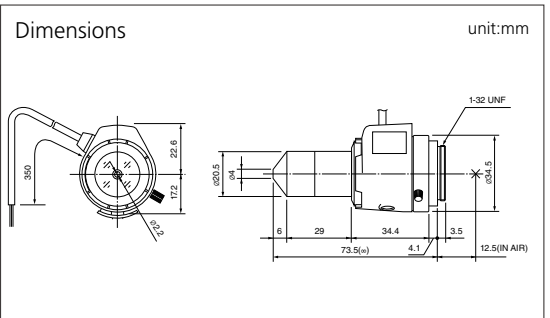
| MODEL NO. | TG2625FCS-P |
|-----------------------------|------------------------------|
| Format (") | 1/3 |
| Mount | CS |
| Focal Length (mm) | 2.6 |
| Aperture (F) | 2.5-360C |
| Angle of View (HOR)° | 83.2 |
| M.O.D. (m) | 0.2 |
| Effective Aperture | Front (φmm) 4.8 |
| | Rear (φmm) 11.5 |
| Front Filter Thread (φMxP=) | - |
| Dimensions | (φD), (φHxD) or (WxHxD)mm |
| Weight (g) | 82 |



FIX
VIDEO



| MODEL NO. | TG2625AFCS-P |
|-----------------------------|------------------------------|
| Format (") | 1/3 |
| Mount | CS |
| Focal Length (mm) | 2.6 |
| Aperture (F) | 2.5-360C |
| Angle of View (HOR)° | 83.2 |
| M.O.D. (m) | 0.2 |
| Effective Aperture | Front (φmm) 4.8 |
| | Rear (φmm) 11.5 |
| Front Filter Thread (φMxP=) | - |
| Dimensions | (φD), (φHxD) or (WxHxD)mm |
| Weight (g) | 85 |



MANUAL IRIS

DC DRIVE

VIDEO DRIVE

FEATURE
INDICATION

MODEL NAME
CODING RULE

MANUAL IRIS

AUTO IRIS

VARI-FOCAL
MANUAL IRIS

VARI-FOCAL
AUTO IRIS

MANUAL
ZOOM

MOTORIZED
ZOOM

PINHOLE
ACCESSORIES

MEGAPIXEL
& FA

TECHNICAL
INFORMATION

ANGLE OF
VIEW

ACCESSORIES

ACCESSORIES

- FEATURE INDICATION
- MODEL NAME CODING RULE
- MANUAL IRIS
- AUTO IRIS
- VARI-FOCAL MANUAL IRIS
- VARI-FOCAL AUTO IRIS
- MANUAL ZOOM
- MOTORIZED ZOOM
- PINHOLE ACCESSORIES
- MEGAPIXEL & FA
- TECHNICAL INFORMATION
- ANGLE OF VIEW



| MODEL NO. | EX1.5CS |
|-------------|---|
| Description | 1.5X Extender for CS-mount |
| Application | Attached between lens and camera - Makes focal length 1.5X |



| MODEL NO. | EX1.5C |
|-------------|---|
| Description | 1.5X Extender for C-mount |
| Application | Attached between lens and camera - Makes focal length 1.5X |



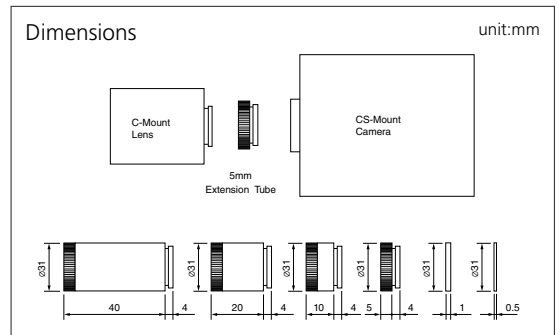
| MODEL NO. | EX2CS |
|-------------|---|
| Description | 2X Extender for CS-mount |
| Application | Attached between lens and camera - Makes focal length 2X |



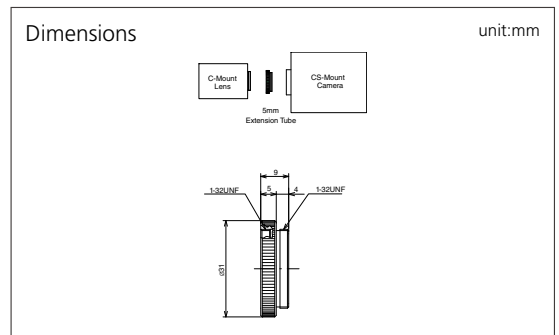
| MODEL NO. | EX2C |
|-------------|---|
| Description | 2X Extender for C-mount |
| Application | Attached between lens and camera - Makes focal length 2X |



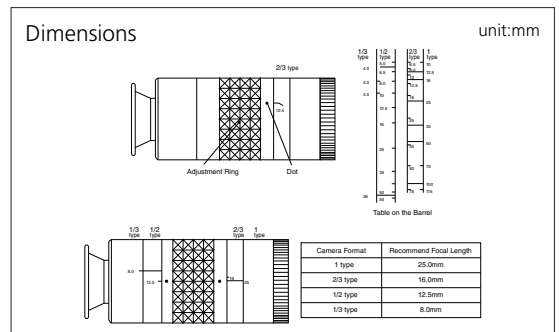
| MODEL NO. | VM100 |
|-------------|---|
| Description | Extension Tube Kit 40, 20, 10, 5, 1, 0.5mm |
| Application | Attached between lens and camera - Reduces minimum focusing distance |



| MODEL NO. | VM400 |
|-------------|--|
| Description | 5mm Adapter Ring |
| Application | Attached between lens and camera - Adapts C-mount lens to CS-mount camera |



| MODEL NO. | VM300 |
|-------------|---|
| Description | View Finder |
| Application | Adjustable field of view - Helps determine required focal length |

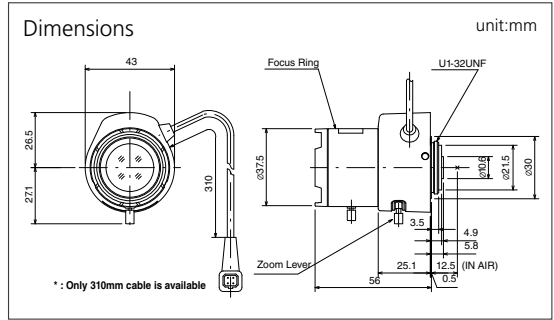




- VARI
- DC
- ASP
- IR
- MEGA PIXEL
- SECURITY



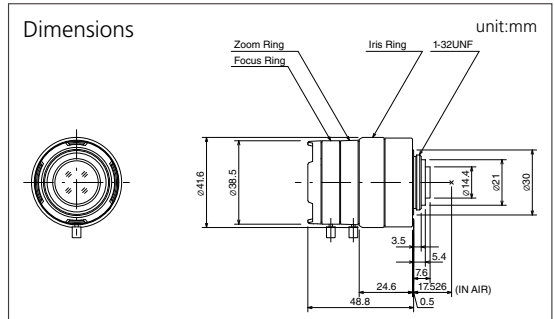
| MODEL NO. | TG4Z2813FCS-MPIR |
|-----------------------------|------------------------------------|
| Format (") | 1/3 |
| Mount | CS |
| Focal Length (mm) | 2.8-12 |
| Aperture (F) | 1.3-360 |
| Angle of View (HOR)° | 102.2-23.7 |
| M.O.D. (m) | 0.3 |
| Effective Aperture | Front (φmm) 23.0 Rear (φmm) 7.4 |
| Front Filter Thread (φMxP=) | - |
| Dimensions | $\phi 37.5 \times 48 \times 56$ |
| Weight (g) | 71 |



- VARI
- MANUAL
- MEGA PIXEL
- SECURITY



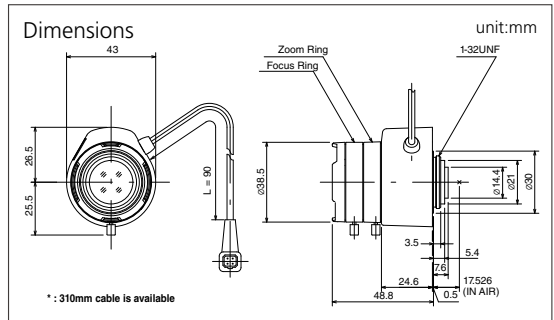
| MODEL NO. | H2Z0414C-MP |
|-----------------------------|-------------------------------------|
| Format (") | 1/2 |
| Mount | C |
| Focal Length (mm) | 4-8 |
| Aperture (F) | 1.4-16C |
| Angle of View (HOR)° | 90.4-47.0 |
| M.O.D. (m) | 0.5 |
| Effective Aperture | Front (φmm) 22.2 Rear (φmm) 10.7 |
| Front Filter Thread (φMxP=) | - |
| Dimensions | $\phi 41.6 \times 48.8$ |
| Weight (g) | 72 |



- VARI
- DC
- MEGA PIXEL
- SECURITY



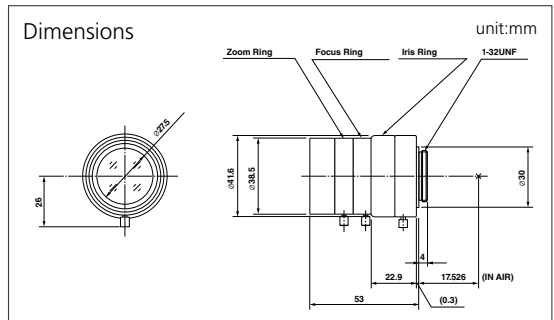
| MODEL NO. | HG2Z0414FC-MP |
|-----------------------------|-------------------------------------|
| Format (") | 1/2 |
| Mount | C |
| Focal Length (mm) | 4-8 |
| Aperture (F) | 1.4-360 |
| Angle of View (HOR)° | 90.4-47.0 |
| M.O.D. (m) | 0.5 |
| Effective Aperture | Front (φmm) 22.2 Rear (φmm) 10.7 |
| Front Filter Thread (φMxP=) | - |
| Dimensions | $\phi 38.5 \times 48 \times 48.8$ |
| Weight (g) | 75 |



- VARI
- MANUAL
- MEGA PIXEL
- SECURITY



| MODEL NO. | M3Z1228C-MP |
|-----------------------------|-------------------------------------|
| Format (") | 2/3 |
| Mount | C |
| Focal Length (mm) | 12-36 |
| Aperture (F) | 2.8-16C |
| Angle of View (HOR)° | 41.0-13.6 |
| M.O.D. (m) | 0.2 |
| Effective Aperture | Front (φmm) 27.2 Rear (φmm) 12.1 |
| Front Filter Thread (φMxP=) | 35.5 × 0.5 |
| Dimensions | $\phi 41.6 \times 53$ |
| Weight (g) | 105 |



* Please note M3Z1228C-MP is produced to order

- FEATURE INDICATION
- MODEL NAME CODING RULE
- MANUAL IRIS
- AUTO IRIS
- VARI-FOCAL MANUAL IRIS
- VARI-FOCAL AUTO IRIS
- MANUAL ZOOM
- MOTORIZED ZOOM
- PINHOLE ACCESSORIES
- MEGAPIXEL & FA
- TECHNICAL INFORMATION
- ANGLE OF VIEW

FEATURE INDICATION MODEL NAME CODING RULE MANUAL IRIS AUTO IRIS VARI-FOCAL MANUAL IRIS VARI-FOCAL AUTO IRIS MANUAL ZOOM MOTORIZED ZOOM PINHOLE ACCESSORIES MEGAPIXEL & FA TECHNICAL INFORMATION ANGLE OF VIEW

- FIX
- MANUAL
- MEGAPIXEL
- SECURITY
- FA

- FIX
- MANUAL
- MEGAPIXEL
- SECURITY
- FA

- FIX
- MANUAL
- MEGAPIXEL
- SECURITY
- FA

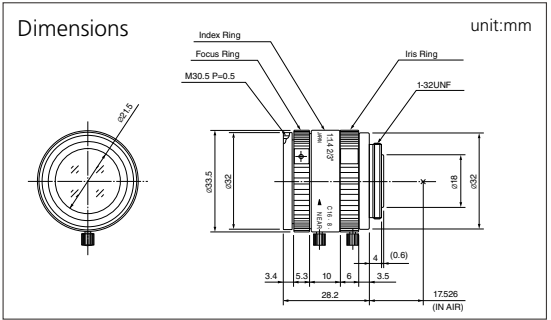
- FIX
- MANUAL
- MEGAPIXEL
- SECURITY
- FA

- FIX
- MANUAL
- MEGAPIXEL
- SECURITY
- FA

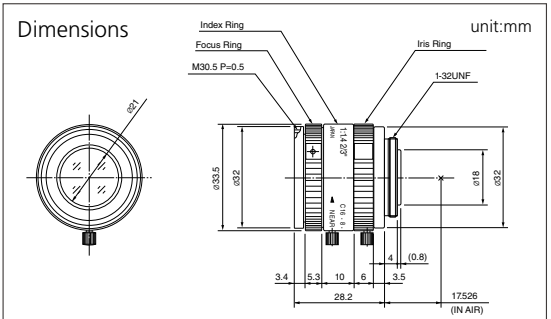
- FIX
- MANUAL
- MEGAPIXEL
- SECURITY
- FA



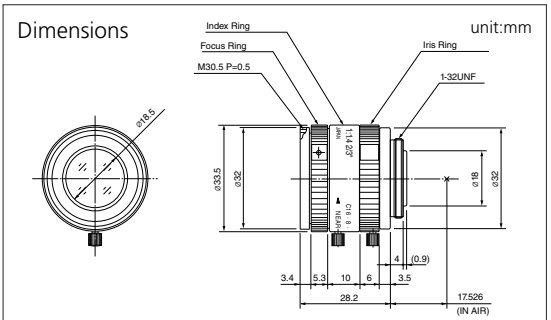
| MODEL NO. | M0814-MP2 |
|--|-------------------------------------|
| Format (") | 2/3 |
| Mount | C |
| Focal Length (mm) | 8 |
| Aperture (F) | 1.4-16C |
| Angle of View (HOR)° | 56.3 |
| M.O.D. (m) | 0.1 |
| Effective Aperture | Front (φmm) 21.5 Rear (φmm) 12.0 |
| Front Filter Thread (φMxP=) | 30.5 × 0.5 |
| Dimensions (φxD), (φxHxD) or (WxHxD)mm | φ33.5 × 28.2 |
| Weight (g) | 70 |



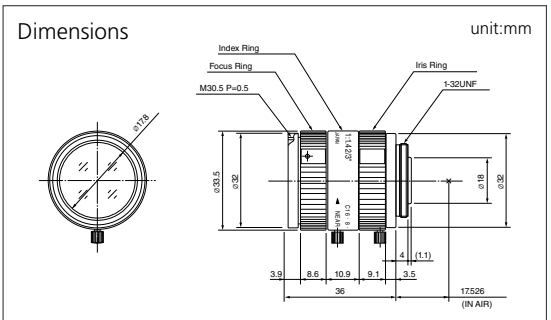
| MODEL NO. | M1214-MP2 |
|--|-------------------------------------|
| Format (") | 2/3 |
| Mount | C |
| Focal Length (mm) | 12 |
| Aperture (F) | 1.4-16C |
| Angle of View (HOR)° | 40.4 |
| M.O.D. (m) | 0.15 |
| Effective Aperture | Front (φmm) 21.0 Rear (φmm) 13.0 |
| Front Filter Thread (φMxP=) | 30.5 × 0.5 |
| Dimensions (φxD), (φxHxD) or (WxHxD)mm | φ33.5 × 28.2 |
| Weight (g) | 65 |



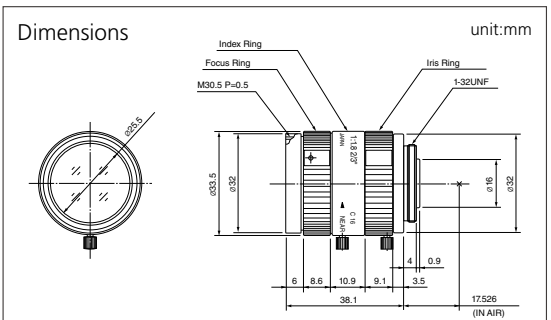
| MODEL NO. | M1614-MP2 |
|--|-------------------------------------|
| Format (") | 2/3 |
| Mount | C |
| Focal Length (mm) | 16 |
| Aperture (F) | 1.4-16C |
| Angle of View (HOR)° | 30.8 |
| M.O.D. (m) | 0.3 |
| Effective Aperture | Front (φmm) 18.5 Rear (φmm) 13.2 |
| Front Filter Thread (φMxP=) | 30.5 × 0.5 |
| Dimensions (φxD), (φxHxD) or (WxHxD)mm | φ33.5 × 28.2 |
| Weight (g) | 65 |



| MODEL NO. | M2514-MP2 |
|--|-------------------------------------|
| Format (") | 2/3 |
| Mount | C |
| Focal Length (mm) | 25 |
| Aperture (F) | 1.4-16C |
| Angle of View (HOR)° | 20.0 |
| M.O.D. (m) | 0.3 |
| Effective Aperture | Front (φmm) 17.8 Rear (φmm) 12.0 |
| Front Filter Thread (φMxP=) | 30.5 × 0.5 |
| Dimensions (φxD), (φxHxD) or (WxHxD)mm | φ33.5 × 36.0 |
| Weight (g) | 75 |



| MODEL NO. | M5018-MP2 |
|--|------------------------------------|
| Format (") | 2/3 |
| Mount | C |
| Focal Length (mm) | 50 |
| Aperture (F) | 1.8-16C |
| Angle of View (HOR)° | 10.5 |
| M.O.D. (m) | 0.5 |
| Effective Aperture | Front (φmm) 25.5 Rear (φmm) 9.6 |
| Front Filter Thread (φMxP=) | 30.5 × 0.5 |
| Dimensions (φxD), (φxHxD) or (WxHxD)mm | φ33.5 × 38.1 |
| Weight (g) | 90 |

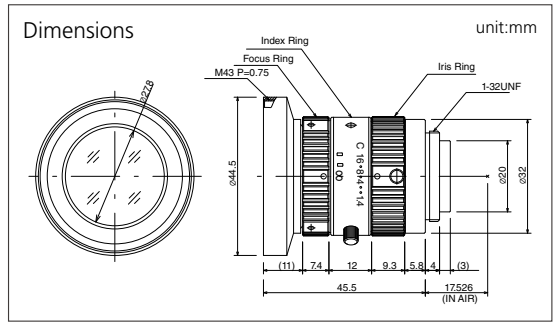




- FIX
- MANUAL
- MEGA PIXEL
- FA



| MODEL NO. | H0514-MP2 |
|--|-------------------------------------|
| Format (") | 1/2 |
| Mount | C |
| Focal Length (mm) | 5 |
| Aperture (F) | 1.4-16C |
| Angle of View (HOR)° | 65.5 |
| M.O.D. (m) | 0.3 |
| Effective Aperture | Front (φmm) 27.8 Rear (φmm) 14.8 |
| Front Filter Thread (φMxP=) | 43.0 × 0.75 |
| Dimensions (φID), (φxHxD) or (WxHxD)mm | φ44.5 × 45.5 |
| Weight (g) | 102 |

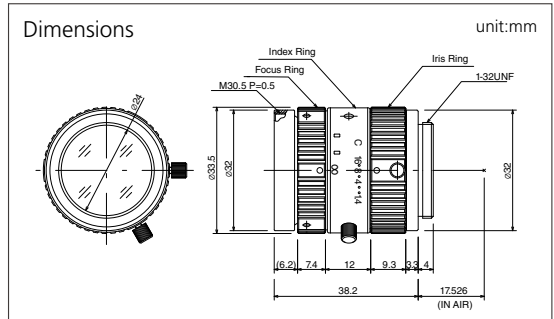


- FIX
- MANUAL
- MEGA PIXEL
- FA



NEW

| MODEL NO. | M3514-MP |
|--|-------------------------------------|
| Format (") | 2/3 |
| Mount | C |
| Focal Length (mm) | 35 |
| Aperture (F) | 1.4-16C |
| Angle of View (HOR)° | 13.9 |
| M.O.D. (m) | 0.3 |
| Effective Aperture | Front (φmm) 24.0 Rear (φmm) 12.0 |
| Front Filter Thread (φMxP=) | - |
| Dimensions (φID), (φxHxD) or (WxHxD)mm | φ33.0 × 38.2 |
| Weight (g) | 87 |

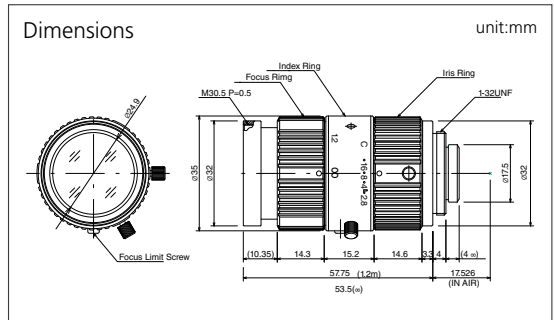


- FIX
- MANUAL
- MEGA PIXEL
- FA



NEW

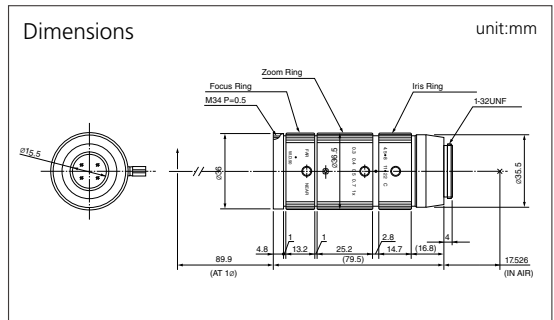
| MODEL NO. | M7528-MP |
|--|-------------------------------------|
| Format (") | 2/3 |
| Mount | C |
| Focal Length (mm) | 75 |
| Aperture (F) | 2.8-16C |
| Angle of View (HOR)° | 6.8 |
| M.O.D. (m) | 0.3 |
| Effective Aperture | Front (φmm) 24.8 Rear (φmm) 13.6 |
| Front Filter Thread (φMxP=) | - |
| Dimensions (φID), (φxHxD) or (WxHxD)mm | φ35.0 × 57.75 |
| Weight (g) | 113 |



- ZOOM
- MANUAL
- MEGA PIXEL
- FA



| MODEL NO. | MLM-3XMP |
|--|------------------------------------|
| Format (") | 2/3 |
| Mount | C |
| Focal Length (mm) | * 0.3-1.0X |
| Aperture (F) | 4.5-22C |
| Angle of View (HOR)° | 11.8-2.78 |
| M.O.D. (m) | 0.09 |
| Effective Aperture | Front (φmm) 15.5 Rear (φmm) 7.0 |
| Front Filter Thread (φMxP=) | 34.0 × 0.5 |
| Dimensions (φID), (φxHxD) or (WxHxD)mm | φ36.5 × 79.5 |
| Weight (g) | 150 |



NOTES : Macro Zoom Lens * mark shows Maximum Magnification

FEATURE INDICATION
 MODEL NAME CODING RULE
 MANUAL IRIS
 AUTO IRIS
 VARI-FOCAL MANUAL IRIS
 VARI-FOCAL AUTO IRIS
 MANUAL ZOOM
 MOTORIZED ZOOM
 PINHOLE ACCESSORIES
 MEGAPIXEL & FA
 TECHNICAL INFORMATION
 ANGLE OF VIEW

ZOOM

MANUAL

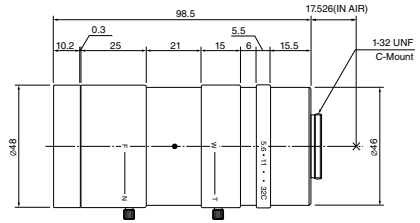
FA



| MODEL NO. | MLH-10X |
|--|------------------|
| Format (") | 1/2 |
| Mount | C |
| Focal Length (mm) | * 0.084-0.84X |
| Aperture (F) | 5.6-32C |
| Angle of View (HOR)° | 18.0-3.6 |
| M.O.D. (m) | 0.1524 (6") |
| Effective Aperture | Front (φmm) 30.0 |
| | Rear (φmm) 6.4 |
| Front Filter Thread (φMxP=) | 46.0 × 0.75 |
| Dimensions (φxD, (φxHxD) or (WxHxD)mm) | φ48 × 98.5 |
| Weight (g) | 260 |

Dimensions

unit:mm



NOTES : Macro Zoom Lens * mark shows Maximum Magnification

FIX

MANUAL

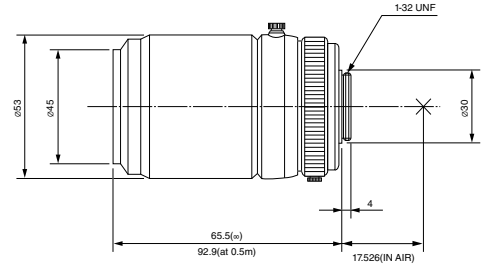
FA



| MODEL NO. | TEC-M55 |
|--|------------------|
| Format (") | 2/3 |
| Mount | C |
| Focal Length (mm) | 55 |
| Aperture (F) | 2.8-32C |
| Angle of View (HOR)° | 9.2 |
| M.O.D. (m) | 0.14 |
| Effective Aperture | Front (φmm) 33.0 |
| | Rear (φmm) 13.3 |
| Front Filter Thread (φMxP=) | 43.0 × 0.75 |
| Dimensions (φxD, (φxHxD) or (WxHxD)mm) | φ53 × 92.9 |
| Weight (g) | 320 |

Dimensions

unit:mm



NOTES : Telecentric Lens TEC-M55 has 0.75X and 2X rear adapters as option.

| MODEL NO. | M55-0.75X | M55-2.0X |
|-------------|---|--|
| Description | Rear converter 0.75X (Designed for TEC-M55) | Rear converter 2.0X (Designed for TEC-M55) |
| Application | Attached between lens and camera Makes focal length 0.75X | Attached between lens and camera Makes focal length 2.0X |

● MEGAPIXEL

● SECURITY

TG4Z2813FCS-MPIR
H2Z0414C-MP
HG2Z0414FC-MP
M3Z1228C-MP

M0814-MP2
M1214-MP2
M1614-MP2
M2514-MP2
M5018-MP2

H0514-MP2
M3514-MP
M7528-MP
MLM-3XMP

MLH-10X
TEC-M55

● FA • IMAGE PROCESSING

FEATURE INDICATION MODEL NAME CODING RULE MANUAL IRIS AUTO IRIS VARI-FOCAL MANUAL IRIS VARI-FOCAL AUTO IRIS MANUAL ZOOM MOTORIZED ZOOM PINHOLE ACCESSORIES MEGAPIXEL & FA TECHNICAL INFORMATION ANGLE OF VIEW

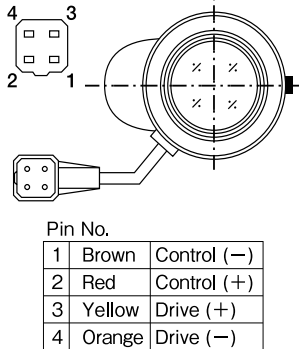
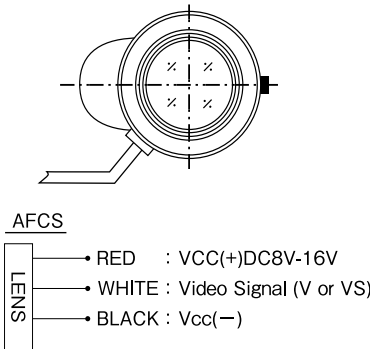
CABLE DIAGRAMS OF AUTO IRIS LENSES

FCS series (DC DRIVE)

FCS series Auto Iris Lens, equipped with auto iris mechanism by galvanometer and with ND filter, can be used with only cameras containing amplifier. Connector plug is applied to the end of the cable.

AFCS series (VIDEO DRIVE)

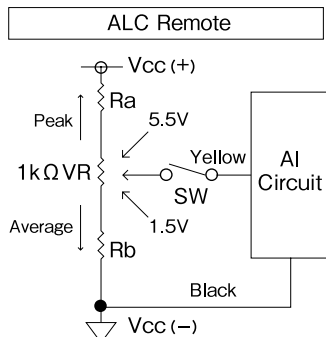
AFCS series Auto Iris Lens is equipped with auto iris mechanism by galvanometer, amplifier and ND spot filter.

| | FCS(w/o Amplifier) | AFCS(with Amplifier) | | | | | | | | | | | | | | | |
|------------------------|---|---|-------|----------|---|-------|-------------|---|-----|-------------|---|--------|-----------|---|--------|-----------|---|
| Supplied Power | - | DC8V ~16V 35mA max | | | | | | | | | | | | | | | |
| Input Signal | - | Video Signal (V or Vs) | | | | | | | | | | | | | | | |
| Iris Accuracy | - | ± 15% (Video Level) | | | | | | | | | | | | | | | |
| Sensitivity Adjustment | - | 0.5V (p-p) ~1.0V (p-p) (Video Signal) | | | | | | | | | | | | | | | |
| Input Impedance | - | High impedance | | | | | | | | | | | | | | | |
| Transit Time | - | Approx. 2sec | | | | | | | | | | | | | | | |
| Light Weighting Method | - | Adjustable between Average-Peak (to be set at Average at factory) | | | | | | | | | | | | | | | |
| Operating Temperature | -10°C~+50°C | -10°C~+50°C | | | | | | | | | | | | | | | |
| Wiring Diagram |  <table border="1"> <thead> <tr> <th>Pin No.</th> <th>Color</th> <th>Function</th> </tr> </thead> <tbody> <tr> <td>1</td> <td>Brown</td> <td>Control (-)</td> </tr> <tr> <td>2</td> <td>Red</td> <td>Control (+)</td> </tr> <tr> <td>3</td> <td>Yellow</td> <td>Drive (+)</td> </tr> <tr> <td>4</td> <td>Orange</td> <td>Drive (-)</td> </tr> </tbody> </table> | Pin No. | Color | Function | 1 | Brown | Control (-) | 2 | Red | Control (+) | 3 | Yellow | Drive (+) | 4 | Orange | Drive (-) |  <p>AFCS</p> <ul style="list-style-type: none"> RED : VCC(+) WHITE : Video Signal (V or VS) BLACK : VCC(-) |
| Pin No. | Color | Function | | | | | | | | | | | | | | | |
| 1 | Brown | Control (-) | | | | | | | | | | | | | | | |
| 2 | Red | Control (+) | | | | | | | | | | | | | | | |
| 3 | Yellow | Drive (+) | | | | | | | | | | | | | | | |
| 4 | Orange | Drive (-) | | | | | | | | | | | | | | | |

REMOTE FUNCTIONS

1) LEVEL & ALC Remotes have been functioned on the following models

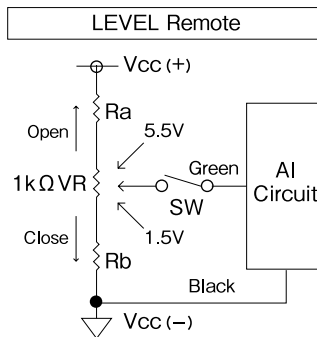
T21Z5816AMS-CS2/AMSP-CS2
H10Z0812AMS-2/AMSP-2
H10Z1218AMS-2/AMSP-2



*Vcc represents Input Voltage.
*The ALC should be set at the full Pk position.

2) LEVEL Remote (AS OPTION)

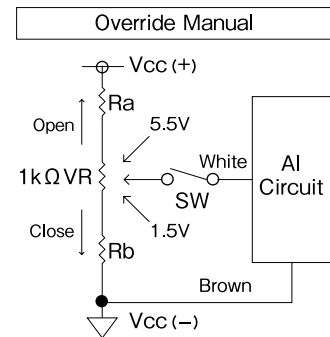
T6Z5710AMS-CS/AMSP-CS
T10Z5712AMS-CS/AMSP-CS
T34Z5518AMS-CS/AMSP-CS
T34Z5518AMSR-CS/AMSPR-CS
H6Z0812AMS/AMSP
H16Z7516AMS/AMSP (-IR)
H16Z7516AMSR/AMSPR (-IR)



*Vcc represents Input Voltage.

3) Override Manual

T34Z5518AMSR-CS/AMSPR-CS
H16Z7516AMSR/AMSPR (-IR)
H30Z1015AMSR/AMSPR



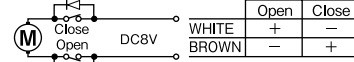
*Vcc represents Input Voltage.
*The Remote Voltage should be set between 1.5 ~ 5.5V, and Level remote should be OFF.

WIRING DIAGRAMS FOR MOTORIZED ZOOM LENSES

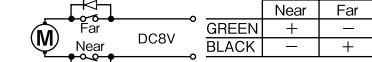
Motorized Zoom 3 Motor Type

Iris, Focus & Zoom can be adjusted by controller.

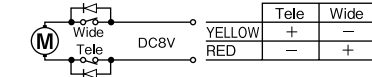
Iris



Focus



Zoom



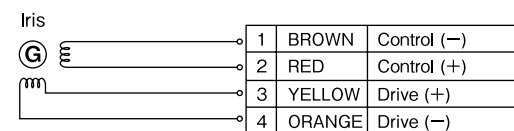
Remarks : Connect together with Iris, Focus and Zoom for common system when necessary.

Motorized Zoom Auto Iris

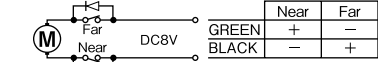
Auto-Iris. Focus & Zoom can be adjusted by controller.

(Some lenses have Level & ALC Remote. Please see Remote Functions at the left page.)

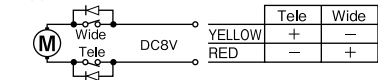
DC Drive



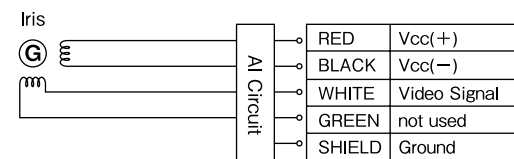
Focus



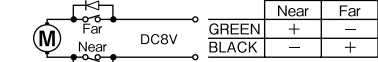
Zoom



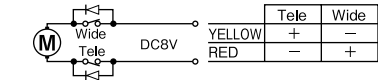
VIDEO Drive



Focus



Zoom



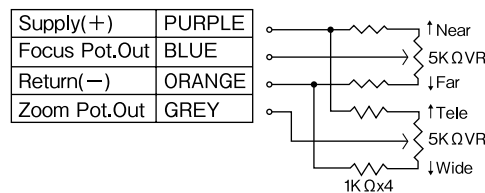
Remarks : Connect together with Iris, Focus and Zoom for common system when necessary.

Motorized Zoom Preset Potentiometer for Focus & Zoom

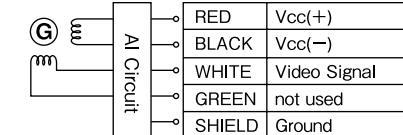
This preset function has been developed for high requirement to automation in CCTV system using potentiometers as position sensor for focusing & zooming.

(Some lenses have Level, ALC & Override Remote. Please see Remote Functions at the left page.)

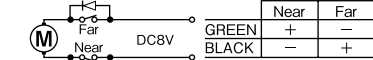
Preset Potentiometer



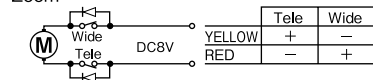
Iris



Focus



Zoom



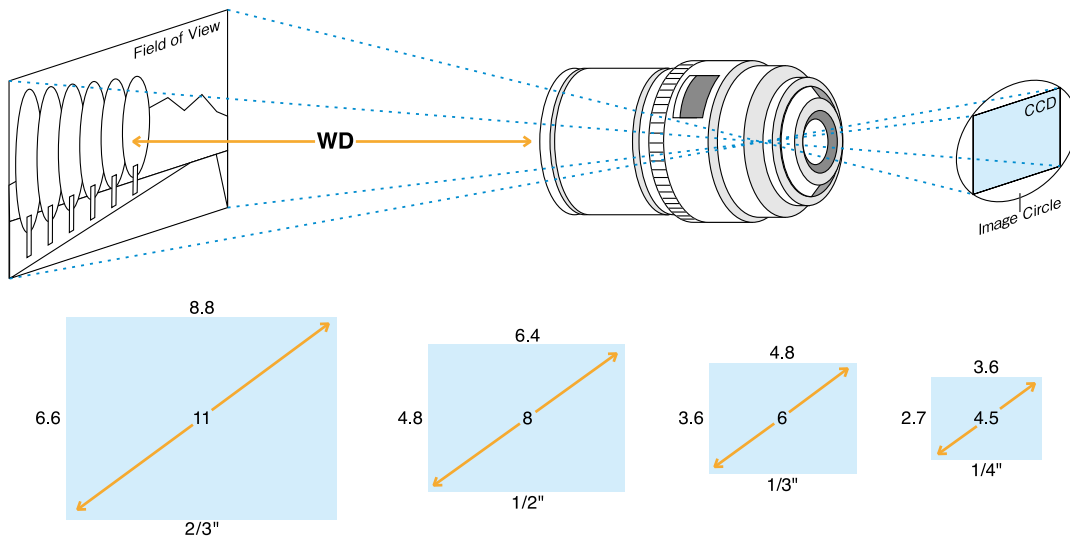
Remarks : Connect together with Iris, Focus and Zoom for common system when necessary.

Note : Wiring Diagram details should follow specifications of each lens.

FEATURE INDICATION
MODEL NAME
CODING RULE
MANUAL IRIS
AUTO IRIS
VARI-FOCAL
MANUAL IRIS
VARI-FOCAL
AUTO IRIS
MANUAL ZOOM
MOTORIZED ZOOM
PINHOLE ACCESSORIES
MEGAPIXEL & FA
TECHNICAL INFORMATION
ANGLE OF VIEW

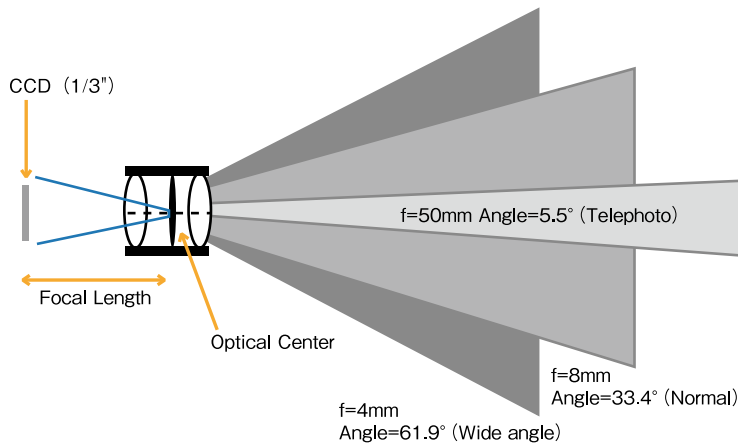
CAMERA FORMAT

The size of camera's imaging device also affects the angle of view, with the smaller devices creating narrower angles of view when used on the same lens. The format of the lens, however is irrelevant to the angle of view, it merely needs to project an image which will cover the device, i.e.; the same format of the camera or larger. This also means that 1/3" cameras can utilize the entire range of lenses from 1/3" to 2/3", with a 1/3" 8mm lens giving the same angle as a 2/3" 8mm lens. The latter combination also provides increased resolution and picture quality as only the centre of the lens is being utilized, where the optics can be ground more accurately.



FOCAL LENGTH

The focal length of the lens is measured in mm and directly relates to the angle of view that will be achieved. Short focal length provides wide angle of view and long focal length becomes telephoto, with narrow angle of view. A "normal" angle of view is similar to what we see with our own eye and has a relative focal length equal to the pick up device. The "computer" range calculator is simple device to use for estimating focal length, object dimension and angle of view, alternatively the VM300 view finder gives an optical way of finding focal length.



F STOP

The lens usually has two measurements of F stop or aperture, the maximum aperture (minimum F stop) when the lens is fully open and minimum aperture (maximum F stop) just before the lens completely closes. The F stop has a number of effects upon the final image; a low minimum F stop will mean the lens can pass more light in dark condition, allowing the camera to produce a better image, and a maximum F stop may be necessary where there is a very high level of light or reflection, this will prevent the camera "whiting out" and maintain constant video level. All auto iris lenses are supplied with Neutral Density filters to increase the maximum F stop. The F stop also directly affects the depth of field.

- FEATURE INDICATION
- MODEL NAME CODING RULE
- MANUAL IRIS
- AUTO IRIS
- VARI-FOCAL MANUAL IRIS
- VARI-FOCAL AUTO IRIS
- MANUAL ZOOM
- MOTORIZED ZOOM
- PINHOLE ACCESSORIES
- MEGAPIXEL & FA
- TECHNICAL INFORMATION
- ANGLE OF VIEW

ANGLE OF VIEW

It is important to know the angle of view of the lens to take in the object. Angle of view changes with focal length of lens and image size of camera. The focal length to cover the object can be calculated from the next formula.

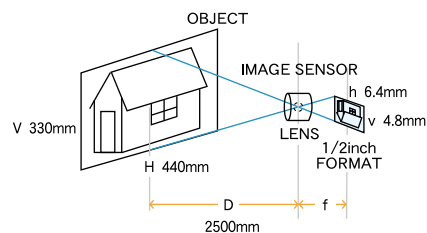
Formula for calculation

$$f = v \times \frac{D}{V} \dots (1) \quad f = h \times \frac{D}{H} \dots (2)$$

- f : focal length of lens
- V : Vertical size of object
- H : Horizontal size of object
- D : Distance from lens to object
- v : vertical size of image (see the following table)
- h : horizontal size of image (see the following table)

| FORMAT | 2/3inch | 1/2inch | 1/3inch | 1/4inch |
|--------|---------|---------|---------|---------|
| v | 6.6mm | 4.8mm | 3.6mm | 2.7mm |
| h | 8.8mm | 6.4mm | 4.8mm | 3.6mm |

For example



- (1) in case of vertical size
1/2 inch camera
Vertical size of object
Distance from lens to object
substitute these datas to formula (1)

$$v = 4.8\text{mm}$$

$$V = 330\text{mm}(33\text{cm})$$

$$D = 2500\text{mm}(250\text{cm})$$

$$f = 4.8 \times \frac{2500}{330} \doteq 36\text{mm}$$

- (2) in case of horizontal size
1/2 inch camera
Horizontal size of object
Distance from lens to object
substitute these datas to formula (2)

$$h = 6.4\text{mm}$$

$$H = 440\text{mm}(44\text{cm})$$

$$D = 2500\text{mm}(250\text{cm})$$

$$f = 6.4 \times \frac{2500}{440} \doteq 36\text{mm}$$

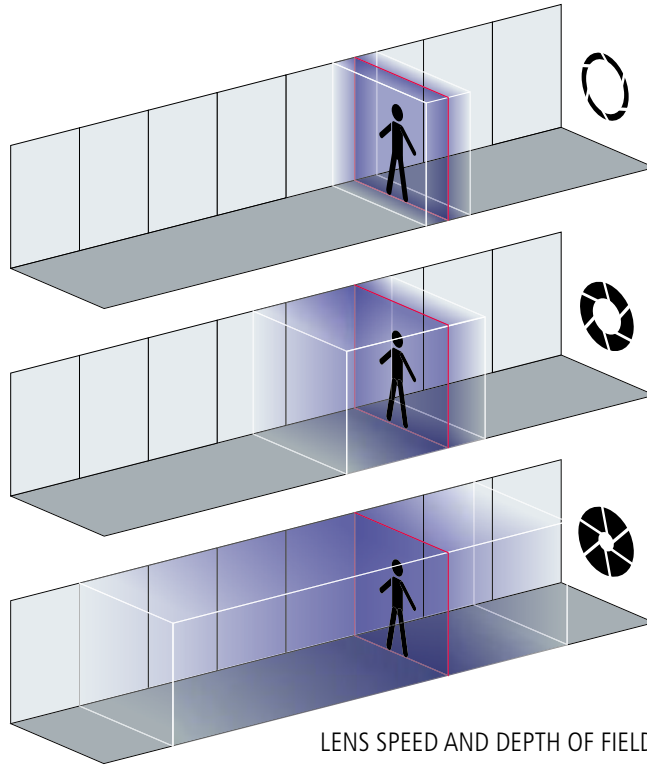
COMPARISON OF MONITORING IMAGES

※ Images on 1/3" camera

| Object distance Focal length | Object distance | | | |
|---------------------------------|-----------------|----|-----|-----|
| | 2m | 5m | 10m | 20m |
| f=2.8mm | | | | |
| f=3.5mm | | | | |
| f=8mm | | | | |
| f=30mm | | | | |
| f=50mm | | | | |

DEPTH OF FIELD

The depth of field refers to the area within the field of view which is in focus. A large depth of field means that a large percentage of the field of view is in focus. A small depth of field has only a small section of the field of view in focus. The depth of field is influenced by several factors; a wide angle lens generally has a larger depth of field than a telephoto lens, a higher F stop setting also has a larger depth of field, and high resolution cameras have a larger depth of field.



LENS SPEED AND DEPTH OF FIELD IMAGE

AUTO OR MANUAL IRIS

Generally we tend to use auto iris lenses externally where there are variations in the lighting levels, manual iris lenses are normally for internal applications where the light level remains constant. With the introduction of electronic iris cameras it is now possible to use manual iris lenses in varying light conditions and the camera will electronically compensate, however there are several considerations to this option; the setting of the F stop becomes critical, if the iris is opened fully to allow the camera to work at night, the depth of field will be very small and it may be more difficult to achieve sharp focus even during the day, the camera can maintain normal video levels but it cannot affect the depth of field. If the iris is closed to increase the depth of field the low light performance of the camera will now be reduced.

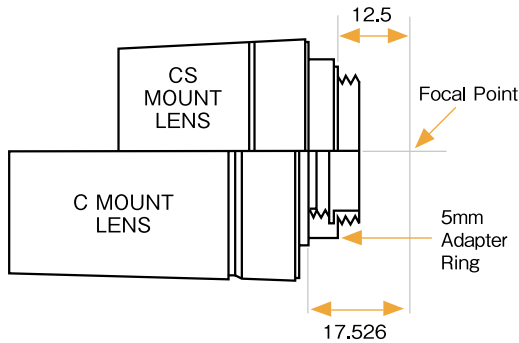
VIDEO DRIVE OR DC DRIVE

With auto iris lenses it is necessary to control the operation of the iris to maintain perfect picture levels, Video drive lenses contain amplifier circuit to convert the video signal from the camera into iris motor control. With DC drive lenses the camera must contain amplifier circuitry, the lens now only contains the galvanometric iris motor making it less expensive. The deciding factor depends on the auto iris output of the camera, most now have both types.

- FEATURE INDICATION
- MODEL NAME CODING RULE
- MANUAL IRIS
- AUTO IRIS
- VARI-FOCAL MANUAL IRIS
- VARI-FOCAL AUTO IRIS
- MANUAL ZOOM
- MOTORIZED ZOOM
- PINHOLE ACCESSORIES
- MEGAPIXEL & FA
- TECHNICAL INFORMATION
- ANGLE OF VIEW

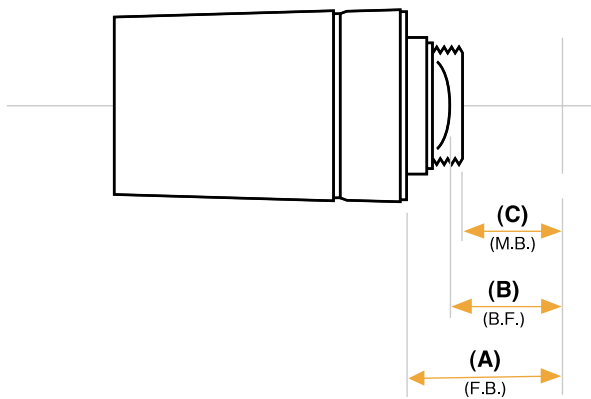
C OR CS MOUNT

Modern cameras and lenses are generally CS mount, with CS mount cameras both types of lenses can be used but the C mount lens requires a 5mm ring (VM400) to be fitted between the camera and lens to achieve a focused image. With C mount cameras it is not possible to use CS mount lenses as it not physically possible to get the lens close enough to the CCD to achieve a focused image.



| | C Mount Lens | CS Mount Lens |
|-----------------|----------------|---------------|
| C Mount Camera | ○ | × |
| CS Mount Camera | needs 5mm ring | ○ |

FLANGE BACK, BACK FOCAL LENGTH, AND MECHANICAL BACK FOCAL LENGTH



(A) Flange Back

Distance between the lens flange and CCD focal plane

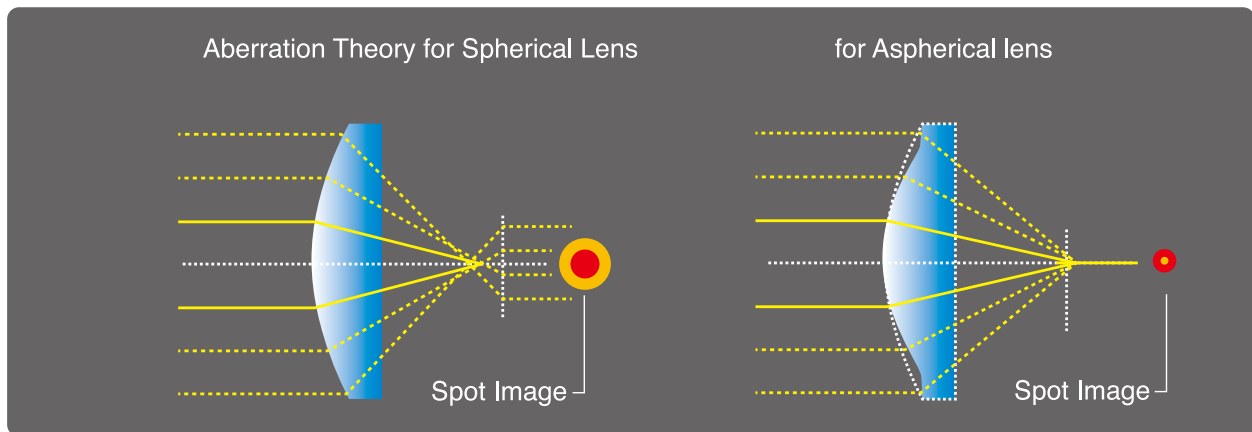
(B) Back Focal Length

Distance between the surface of the rear lens element and CCD focal plane

(C) Mechanical Back Focal Length

Distance between the surface of the lens frame and CCD focal plane

ASPHERICAL LENSES

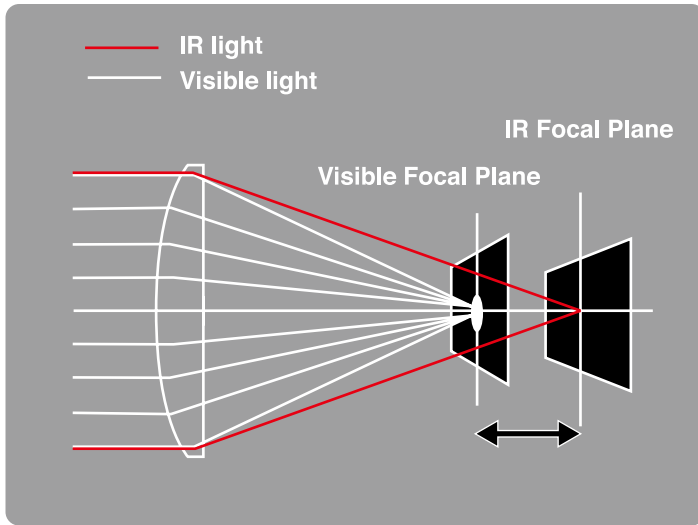


Spherical lenses have constant refractive indices and are commonly used in almost all CCTV lenses. They are designed in such a way so that light passing through the glass and center of a spherical element should fall on a single point on the image plane, but causing some spherical aberration. This problem is resolved by the aspherical lens technology, enabling more light to pass through the element and to focus right on the same point as on the image plane. Supported by more advanced molding technologies, aspherical lenses eliminate the size constraints and improve the overall optical performance compared with more conventional CCTV lenses.

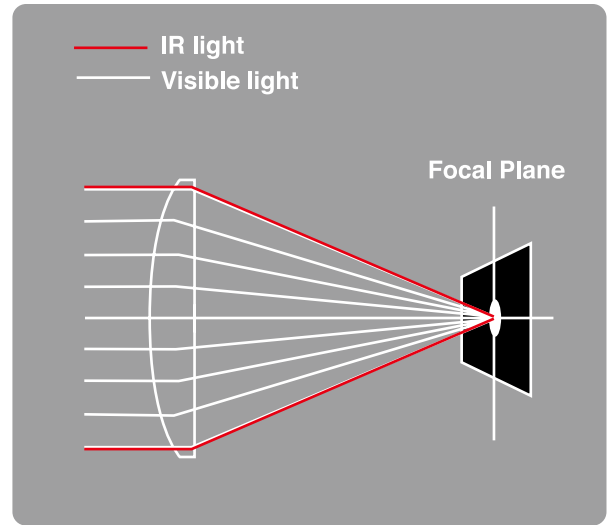
FEATURE INDICATION
MODEL NAME CODING RULE
MANUAL IRIS
AUTO IRIS
VARI-FOCAL MANUAL IRIS
VARI-FOCAL AUTO IRIS
MANUAL ZOOM
MOTORIZED ZOOM
PINHOLE ACCESSORIES
MEGAPIXEL & FA
TECHNICAL INFORMATION
ANGLE OF VIEW

MECHANISM AND ADVANTAGEOUS EFFECT OF IR LENS

■ NON IR LENS



■ IR LENS



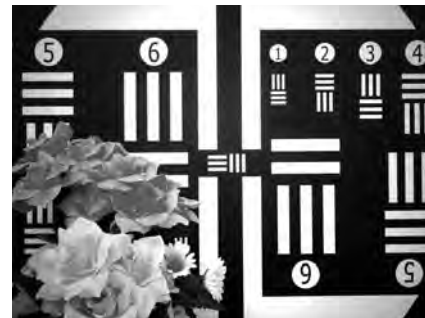
Day & Night cameras normally operate in the near-infrared/infrared zones at night, making the image "out of focus" and unsuitable if used with a conventional lens. "Computar" has developed new IR Lenses that utilize a special optical glass material which minimizes light dispersion. As a result, refocusing is not required when used with infrared lighting. The lens is manufactured with a special ED glass (Extra dispersion) which does not widely disperse light of different wavelengths and with "special coating". This combination allows the lens to deliver perfect focus under normal lighting and also under IR illumination by transmitting more light to the infrared region.

Daytime



Nighttime

IR Lens



Non IR Lens



※ Monitoring Images with Day & Night cameras

- FEATURE INDICATION
- MODEL NAME CODING RULE
- MANUAL IRIS
- AUTO IRIS
- VARI-FOCAL MANUAL IRIS
- VARI-FOCAL AUTO IRIS
- MANUAL ZOOM
- MOTORIZED ZOOM
- PINHOLE ACCESSORIES
- MEGAPIXEL & FA
- TECHNICAL INFORMATION
- ANGLE OF VIEW

Megapixel

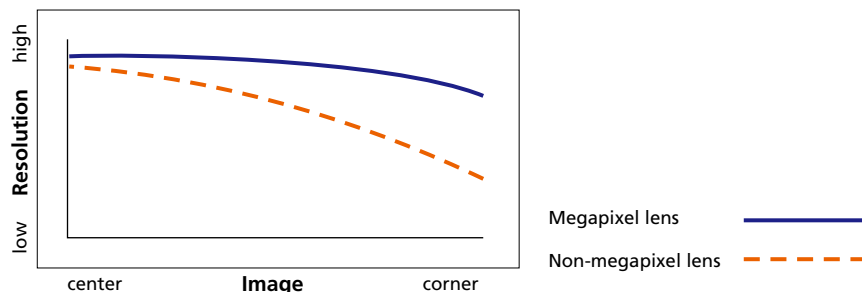
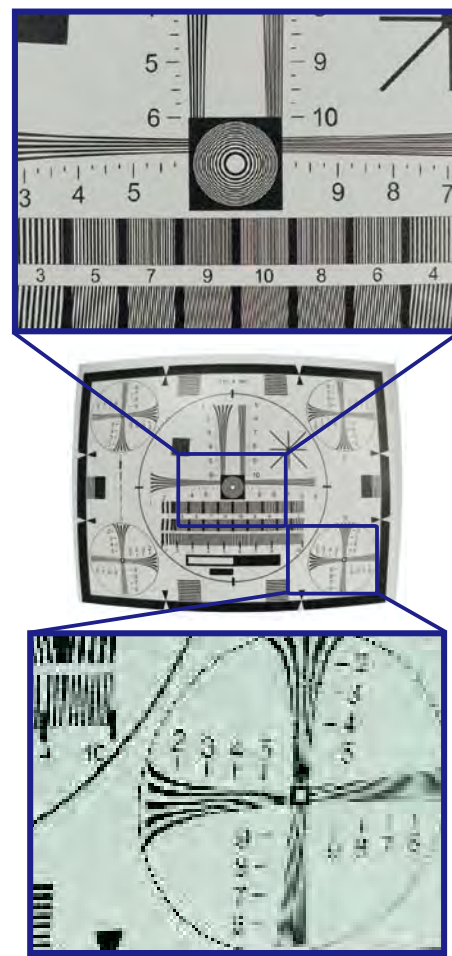
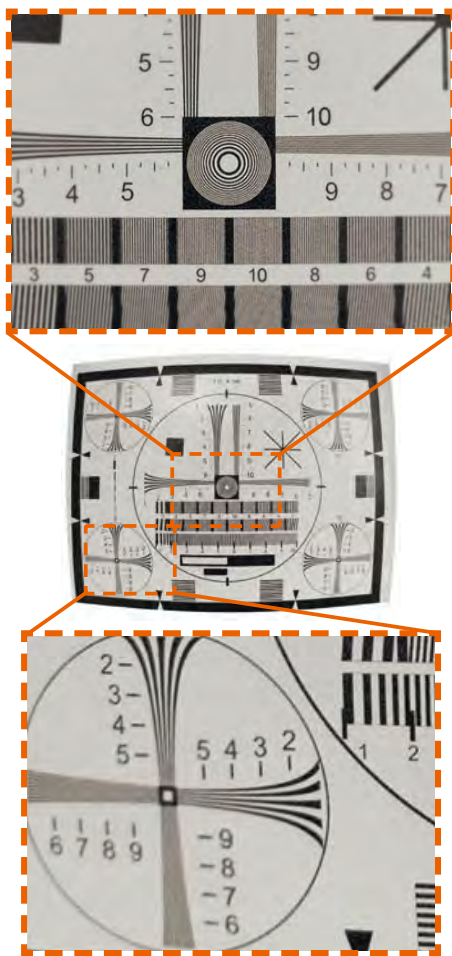
CCD and CMOS image sensors use a series of pixels arranged on a 2 dimensional grid. These pixels convert an optical image to an electronic signal. The number of pixels in an image usually defines the resolution, with more pixels meaning higher resolution. A megapixel is defined as one million pixels and a camera with a megapixel sensor is called a megapixel camera.

Megapixel lens for megapixel camera

To capture the full resolution of a megapixel camera, it is essential to use a high quality megapixel lens. Overall image quality is heavily influenced by the quality of the optical image directed onto the image sensor. Megapixel lenses provide high contrast, brightness and sharpness across the entire image plane. Non-megapixel lenses will not fully display the resolution of megapixel sensors, especially in the corners of the image.

Non-megapixel lens with a megapixel camera

Megapixel lens with a megapixel camera



※ Above pictures and chart are image of lens performance.

FEATURE INDICATION
 MODEL NAME CODING RULE
 MANUAL IRIS
 AUTO IRIS
 VARI-FOCAL MANUAL IRIS
 VARI-FOCAL AUTO IRIS
 MANUAL ZOOM
 MOTORIZED ZOOM
 PINHOLE ACCESSORIES
 MEGAPIXEL & FA
 TECHNICAL INFORMATION
 ANGLE OF VIEW



MANUAL IRIS

C-MOUNT/CS-MOUNT

P3

| | Model No. | Format | Mount | Focal Length (mm) | Aperture (F) | Angle of View (HORIZONTAL) | | | | UNIT: (°) |
|----------|-------------|--------|-------|-------------------|--------------|----------------------------|-------------|-------------|-------------|-----------|
| | | inch | | | | 2/3" | 1/2" | 1/3" | 1/4" | |
| | | | | | | (8.8×6.6mm) | (6.4×4.8mm) | (4.8×3.6mm) | (3.6×2.7mm) | |
| CS MOUNT | T2314FICS-3 | 1/3 | CS | 2.3 | 1.4-16C | - | - | 113.3 | 86.3 | |
| | T2616FICS-4 | 1/3 | CS | 2.6 | 1.6-11C | - | - | 99.6 | 74.9 | |
| | T0412FICS-3 | 1/3 | CS | 4 | 1.2-16C | - | - | 63.9 | 49.1 | |
| | T0812FICS-3 | 1/3 | CS | 8 | 1.2-16C | - | - | 34.7 | 25.9 | |
| | H1214FICS-3 | 1/2 | CS | 12 | 1.4-16C | - | 30.4 | 22.8 | 17.0 | |
| C MOUNT | M8513 | 2/3 | C | 8.5 | 1.3-16C | 57.4 | 42.6 | 32.2 | 24.2 | |

AUTO IRIS

DC DRIVE/VIDEO DRIVE

P4

| | Model No. | Format | Mount | Focal Length (mm) | Aperture (F) | Angle of View (HORIZONTAL) | | | | UNIT: (°) |
|-------------|--------------|--------|-------|-------------------|--------------|----------------------------|-------------|-------------|-------------|-----------|
| | | inch | | | | 2/3" | 1/2" | 1/3" | 1/4" | |
| | | | | | | (8.8×6.6mm) | (6.4×4.8mm) | (4.8×3.6mm) | (3.6×2.7mm) | |
| DC DRIVE | TG2314FCS-3 | 1/3 | CS | 2.3 | 1.4-360C | - | - | 113.3 | 86.3 | |
| | TG2616FCS-4 | 1/3 | CS | 2.6 | 1.6-360C | - | - | 99.6 | 74.9 | |
| | TG0412FCS-3 | 1/3 | CS | 4 | 1.2-360C | - | - | 63.9 | 49.1 | |
| | TG0812FCS-3 | 1/3 | CS | 8 | 1.2-360C | - | - | 34.7 | 25.9 | |
| | HG1214FCS-3 | 1/2 | CS | 12 | 1.4-360C | - | 30.4 | 22.8 | 17.0 | |
| VIDEO DRIVE | TG2314AFCS-3 | 1/3 | CS | 2.3 | 1.4-360C | - | - | 113.3 | 86.3 | |
| | TG2616AFCS-4 | 1/3 | CS | 2.6 | 1.6-360C | - | - | 99.6 | 74.9 | |
| | HG1214AFCS-3 | 1/2 | CS | 12 | 1.4-360C | - | 30.4 | 22.8 | 17.0 | |

VARI-FOCAL MANUAL IRIS

P6 ~ 8

| | Model No. | Format | Mount | Focal Length (mm) | Aperture (F) | Angle of View (HORIZONTAL) | | | | UNIT: (°) |
|-------------|--------------------|--------|-------|-------------------|--------------|----------------------------|-------------|-------------|-------------|-----------|
| | | inch | | | | 2/3" | 1/2" | 1/3" | 1/4" | |
| | | | | | | (8.8×6.6mm) | (6.4×4.8mm) | (4.8×3.6mm) | (3.6×2.7mm) | |
| MANUAL IRIS | T2Z1816CS | 1/3 | CS | 1.8-3.6 | 1.6-16C | - | - | 144.2-79.4 | 109.5-59.6 | |
| | T3Z2910CS (NEW) | 1/3 | CS | 2.9-8.2 | 1.0-16C | - | - | 98.3-35.2 | 70.7-26.3 | |
| | T3Z2910CS-IR (NEW) | 1/3 | CS | 2.9-8.2 | 1.0-16C | - | - | 95.0-35.6 | 69.0-26.7 | |
| | T3Z3510CS | 1/3 | CS | 3.5-10.5 | 1.0-16C | - | - | 81.6-27.2 | 59.4-20.4 | |
| | T3Z3510CS-IR | 1/3 | CS | 3.5-10.5 | 1.0-16C | - | - | 81.8-27.2 | 59.2-20.4 | |
| | T4Z2813CS-IR (NEW) | 1/3 | CS | 2.8-12 | 1.3-16C | - | - | 102.2-23.7 | 74.2-17.8 | |
| | T10Z0513CS-2 | 1/3 | CS | 5-50 | 1.3-16C | - | - | 51.8-5.6 | 39.2-4.3 | |
| | T5Z8513CS-IR | 1/3 | CS | 8.5-40 | 1.3-16C | - | - | 33.5-7.1 | 24.4-5.3 | |
| | H2Z0414C-MP (NEW) | 1/2 | C | 4.0-8.0 | 1.4-16C | - | 90.4-47.0 | 67.0-35.3 | 50.0-20.5 | |
| | H2Z4516CS-2 | 1/2 | CS | 4.5-10 | 1.6-16C | - | 81.3-38.2 | 60.4-28.7 | 33.6-16.1 | |
| | H3Z4512CS-IR | 1/2 | CS | 4.5-12.5 | 1.2-16C | - | 83.7-30.1 | 61.3-22.6 | 45.3-17.0 | |
| | H3Z1014CS | 1/2 | CS | 10-30 | 1.4-16C | - | 35.8-12.5 | 26.8-9.4 | 20.1-7.0 | |

FEATURE INDICATION
 MODEL NAME CODING RULE
 MANUAL IRIS
 AUTO IRIS
 VARI-FOCAL MANUAL IRIS
 VARI-FOCAL AUTO IRIS
 MANUAL ZOOM
 MOTORIZED ZOOM
 PINHOLE ACCESSORIES
 MEGAPIXEL & FA
 TECHNICAL INFORMATION
 ANGLE OF VIEW

VARI-FOCAL AUTO IRIS

DC DRIVE/VIDEO DRIVE

P9 ~ 15

| | Model No. | Format | Mount | Focal Length (mm) | Aperture (F) | Angle of View (HORIZONTAL) | | | | UNIT: (°) |
|-------------|------------------------|--------|-------|-------------------|--------------|----------------------------|-------------|-------------|-------------|-----------|
| | | inch | | | | 2/3" | 1/2" | 1/3" | 1/4" | |
| | | | | | | (8.8x6.6mm) | (6.4x4.8mm) | (4.8x3.6mm) | (3.6x2.7mm) | |
| DC DRIVE | TG2Z1816FCS | 1/3 | CS | 1.8-3.6 | 1.6-360C | - | - | 144.2-79.4 | 109.5-59.6 | |
| | TG3Z2312FCS | 1/3 | CS | 2.3-6 | 1.2-360 | - | - | 114.8-48.2 | 86.0-36.1 | |
| | TG3Z2910FCS (NEW) | 1/3 | CS | 2.9-8.2 | 1.0-360C | - | - | 98.3-35.2 | 70.7-26.3 | |
| | TG3Z2910FCS-IR (NEW) | 1/3 | CS | 2.9-8.2 | 1.0-360C | - | - | 95.0-35.6 | 69.0-26.7 | |
| | TG3Z3510FCS | 1/3 | CS | 3.5-10.5 | 1.0-360 | - | - | 81.6-27.2 | 59.4-20.4 | |
| | TG3Z3510FCS-IR | 1/3 | CS | 3.5-10.5 | 1.0-360 | - | - | 81.8-27.2 | 59.2-20.4 | |
| | TG4Z2813FCS-IR (NEW) | 1/3 | CS | 2.8-12 | 1.3-360 | - | - | 102.2-23.7 | 74.2-17.8 | |
| | TG4Z2813FCS-MPIR (NEW) | 1/3 | CS | 2.8-12 | 1.3-360 | - | - | 102.2-23.7 | 74.2-17.8 | |
| | TG10Z0513FCS-2 | 1/3 | CS | 5-50 | 1.3-360C | - | - | 51.8-5.6 | 39.2-4.3 | |
| | TG5Z8513FCS-IR | 1/3 | CS | 8.5-40 | 1.3-360C | - | - | 33.5-7.1 | 24.4-5.3 | |
| | HG2Z0414FC-MP (NEW) | 1/2 | C | 4-8 | 1.4-360C | - | 90.4-47.0 | 67.0-35.3 | 50.0-26.5 | |
| | HG2Z4516FCS-2 | 1/2 | CS | 4.5-10 | 1.6-360C | - | 81.3-38.2 | 60.4-28.7 | 33.6-16.1 | |
| | HG3Z4512FCS-IR | 1/2 | CS | 4.5-12.5 | 1.2-360 | - | 83.7-30.1 | 61.3-22.6 | 45.3-17.0 | |
| | HG3Z1014FCS | 1/2 | CS | 10-30 | 1.4-360C | - | 35.8-12.5 | 26.8-9.4 | 20.1-7.0 | |
| VIDEO DRIVE | TG2Z1816AFCS | 1/3 | CS | 1.8-3.6 | 1.6-360C | - | - | 144.2-79.4 | 109.5-59.6 | |
| | TG3Z2910AFCS (NEW) | 1/3 | CS | 2.9-8.2 | 1.0-360C | - | - | 98.3-35.2 | 70.7-26.3 | |
| | TG3Z2910AFCS-IR (NEW) | 1/3 | CS | 2.9-8.2 | 1.0-360C | - | - | 95.0-35.6 | 69.0-26.7 | |
| | TG3Z3510AFCS | 1/3 | CS | 3.5-10.5 | 1.0-360 | - | - | 81.6-27.2 | 59.4-20.4 | |
| | TG3Z3510AFCS-IR | 1/3 | CS | 3.5-10.5 | 1.0-360 | - | - | 81.8-27.2 | 59.2-20.4 | |
| | TG4Z2813AFCS-IR (NEW) | 1/3 | CS | 2.8-12 | 1.3-36 | - | - | 102.2-23.7 | 74.2-17.8 | |
| | TG10Z0513AFCS-2 | 1/3 | CS | 5-50 | 1.3-360C | - | - | 51.8-5.6 | 39.2-4.3 | |
| | TG5Z8513AFCS-IR | 1/3 | CS | 8.5-40 | 1.3-360C | - | - | 33.5-7.1 | 24.4-5.3 | |
| | HG2Z4516AFCS-2 | 1/2 | CS | 4.5-10 | 1.6-360C | - | 81.3-38.2 | 60.4-28.7 | 33.6-16.1 | |
| | HG3Z4512AFCS-IR | 1/2 | CS | 4.5-12.5 | 1.2-360 | - | 83.7-30.1 | 61.3-22.6 | 45.3-17.0 | |
| | HG3Z1014AFCS | 1/2 | CS | 10-30 | 1.4-360C | - | 35.8-12.5 | 26.8-9.4 | 20.1-7.0 | |

MANUAL ZOOM

MANUAL IRIS

P16

| | Model No. | Format | Mount | Focal Length (mm) | Aperture (F) | Angle of View (HORIZONTAL) | | | | UNIT: (°) |
|-------------|------------|--------|-------|-------------------|--------------|----------------------------|-------------|-------------|-------------|-----------|
| | | inch | | | | 2/3" | 1/2" | 1/3" | 1/4" | |
| | | | | | | (8.8x6.6mm) | (6.4x4.8mm) | (4.8x3.6mm) | (3.6x2.7mm) | |
| MANUAL IRIS | H6Z0812 | 1/2 | C | 8-48 | 1.2-16C | - | 44.6-8.0 | 33.5-6.1 | 25.2-4.6 | |
| | M6Z1212-3S | 2/3 | C | 12.5-75 | 1.2-16C | 38.3-6.7 | 28.3-5.0 | 21.3-3.8 | 16.0-2.8 | |

MANUAL ZOOM WITH AUTO IRIS

DC DRIVE/VIDEO DRIVE

P17

| | Model No. | Format | Mount | Focal Length (mm) | Aperture (F) | Angle of View (HORIZONTAL) | | | | UNIT: (°) |
|-------------|----------------|--------|-------|-------------------|--------------|----------------------------|-------------|-------------|-------------|-----------|
| | | inch | | | | 2/3" | 1/2" | 1/3" | 1/4" | |
| | | | | | | (8.8x6.6mm) | (6.4x4.8mm) | (4.8x3.6mm) | (3.6x2.7mm) | |
| DC DRIVE | T6Z5710AIDC-CS | 1/3 | CS | 5.7-34.2 | 1.0-360C | - | - | 45.9-8.1 | 34.8-6.2 | |
| | H6Z0812AIDC | 1/2 | C | 8-48 | 1.2-560C | - | 44.6-8.0 | 33.5-6.1 | 25.2-4.6 | |
| VIDEO DRIVE | T6Z5710AIVD-CS | 1/3 | CS | 5.7-34.2 | 1.0-360C | - | - | 45.9-8.1 | 34.8-6.2 | |
| | H6Z0812AIVD | 1/2 | C | 8-48 | 1.2-560C | - | 44.6-8.0 | 33.5-6.1 | 25.2-4.6 | |

ANGLE OF VIEW



MOTORIZED ZOOM

1/3" 1/2"

P18 ~ 27

| | Model No. | Format | Mount | Focal Length (mm) | Aperture (F) | Angle of View (HORIZONTAL) UNIT: (°) | | | |
|------|--------------------|--------|-------|-------------------|--------------|--------------------------------------|------------------|------------------|------------------|
| | | inch | | | | 2/3" (8.8×6.6mm) | 1/2" (6.4×4.8mm) | 1/3" (4.8×3.6mm) | 1/4" (3.6×2.7mm) |
| 1/3" | T6Z5710 Series | 1/3 | CS | 5.7-34.2 | 1.0 ~ | - | - | 45.9-8.1 | 34.8-6.2 |
| | T10Z5712 Series | 1/3 | CS | 5.7-57 | 1.2 ~ | - | - | 44.6-4.8 | 34.2-3.7 |
| | T21Z5816 Series | 1/3 | CS | 5.8-121.8 | 1.6 ~ | - | - | 44.8-2.3 | 33.8-1.8 |
| | T34Z5518 Series | 1/3 | CS | 5.5-187 | 1.8 ~ | - | - | 46.6-1.5 | 35.2-1.1 |
| 1/2" | H6Z0812 Series | 1/2 | C | 8-48 | 1.2 ~ | - | 44.6-8.0 | 33.5-6.1 | 25.2-4.6 |
| | H10Z0812 Series | 1/2 | C | 8-80 | 1.2 ~ | - | 44.0-4.7 | 33.3-3.5 | 25.0-2.6 |
| | H10Z1218 Series | 1/2 | C | 12-120 | 1.8 ~ | - | 29.4-3.1 | 22.2-2.3 | 16.7-1.7 |
| | H16Z7516 Series | 1/2 | C | 7.5-120 | 1.6 ~ | - | 46.6-3.2 | 35.3-2.4 | 26.6-1.8 |
| | H16Z7516-IR Series | 1/2 | C | 7.5-120 | 1.6 ~ | - | 47.0-3.1 | 35.4-2.4 | 26.6-1.7 |
| | H30Z1015 Series | 1/2 | C | 10-300 | 1.5 ~ | - | 35.5-1.25 | 26.8-0.94 | 20.1-0.71 |

PINHOLE

MANUAL IRIS/DC DRIVE/VIDEO DRIVE

P28

| | Model No. | Format | Mount | Focal Length (mm) | Aperture (F) | Angle of View (HORIZONTAL) UNIT: (°) | | | |
|-------------|--------------|--------|-------|-------------------|--------------|--------------------------------------|------------------|------------------|------------------|
| | | inch | | | | 2/3" (8.8×6.6mm) | 1/2" (6.4×4.8mm) | 1/3" (4.8×3.6mm) | 1/4" (3.6×2.7mm) |
| MANUAL IRIS | T2625CS-P | 1/3 | CS | 2.6 | 2.5-32C | - | - | 83.2 | 67.5 |
| DC DRIVE | TG2625FCS-P | 1/3 | CS | 2.6 | 2.5-360C | - | - | 83.2 | 67.5 |
| VIDEO DRIVE | TG2625AFCS-P | 1/3 | CS | 2.6 | 2.5-360C | - | - | 83.2 | 67.5 |

MEGAPIXEL & FA

SECURITY/FA · IMAGE PROCESSING

P30 ~ 33

| | Model No. | Format | Mount | Focal Length (mm) | Aperture (F) | Angle of View (HORIZONTAL) UNIT: (°) | | | |
|-------------|------------------------|--------|-------|-------------------|--------------|--------------------------------------|------------------|------------------|------------------|
| | | inch | | | | 2/3" (8.8×6.6mm) | 1/2" (6.4×4.8mm) | 1/3" (4.8×3.6mm) | 1/4" (3.6×2.7mm) |
| SECURITY | TG4Z2813FCS-MPIR (NEW) | 1/3 | CS | 2.8-12 | 1.3-360 | - | - | 102.2-23.7 | 74.2-17.8 |
| | H2Z0414C-MP (NEW) | 1/2 | C | 4-8 | 1.4-16C | - | 90.4-47.0 | 67.0-35.3 | 50.0-26.5 |
| | HG2Z0414FC-MP (NEW) | 1/2 | C | 4-8 | 1.4-360 | - | 90.4-47.0 | 67.0-35.3 | 50.0-26.5 |
| | M3Z1228C-MP | 2/3 | C | 12-36 | 2.8-16C | 41.0-13.6 | 30.2-10.0 | 22.8-7.6 | 17.1-5.7 |
| FA/SECURITY | M0814-MP2 | 2/3 | C | 8 | 1.4-16C | 56.3 | 42.5 | 32.4 | 24.6 |
| | M1214-MP2 | 2/3 | C | 12 | 1.4-16C | 40.4 | 30.0 | 22.7 | 17.1 |
| | M1614-MP2 | 2/3 | C | 16 | 1.4-16C | 30.8 | 22.7 | 17.1 | 12.6 |
| | M2514-MP2 | 2/3 | C | 25 | 1.4-16C | 20.0 | 14.6 | 11.0 | 8.2 |
| | M5018-MP2 | 2/3 | C | 50 | 1.8-16C | 10.5 | 7.6 | 5.7 | 4.3 |
| FA | H0514-MP2 | 1/2 | C | 5 | 1.4-16C | - | 65.5 | 51.4 | 39.5 |
| | M3514-MP (NEW) | 2/3 | C | 35 | 1.4-16C | 13.9 | 10.1 | | |
| | M7528-MP (NEW) | 2/3 | C | 75 | 2.8-16C | 6.8 | 5.0 | | |
| | MLM-3XMP | 2/3 | C | *0.3X-1.0X | 4.5-22C | 11.8-1.2 | 8.6-0.9 | 6.5-0.7 | 4.9-0.5 |
| | MLH-10X | 1/2 | C | *0.084-0.84X | 5.6-32C | - | 18.0-3.6 | 13.8-2.7 | 10.6-2.0 |
| | TEC-M55 | 2/3 | C | 55 | 2.8-32C | 9.2 | 6.7 | 5.0 | 3.7 |

※ mark (MLH-10X, MLM-3XMP) shows Maximum Magnification.

※ SPECIFICATIONS SUBJECT TO CHANGE WITHOUT NOTICE

FEATURE INDICATION
 MODEL NAME CODING RULE
 MANUAL IRIS
 AUTO IRIS
 VARI-FOCAL MANUAL IRIS
 VARI-FOCAL AUTO IRIS
 MANUAL ZOOM
 MOTORIZED ZOOM
 PINHOLE ACCESSORIES
 MEGAPIXEL & FA
 TECHNICAL INFORMATION
 ANGLE OF VIEW

CBC (AMERICA) CORP.

New York

55 Mall Drive,
Commack, NY 11725, U.S.A.

Tel : +1 800 422 6707

Fax : +1 631 543 5426

<http://www.computarganz.com>

cctv@cbcamerica.com

California

20521 Earl Street,
Torrance, CA 90503, U.S.A.

Tel : +1 800 888 0131

Fax : +1 310 793 1506

<http://www.computarganz.com>

cctv@cbcamerica.com



Head Quarters

Image & Information Technology Division

2-15-13, Tsukishima, Chuo-ku,

Tokyo 104-0052, Japan

Tel : +81 (0)3 3536 4678 Fax : +81 (0)3 3536 4771

<http://www.cbc.co.jp>

www.cbc.co.jp
www.computar.jp



Tokyo HQ Registered