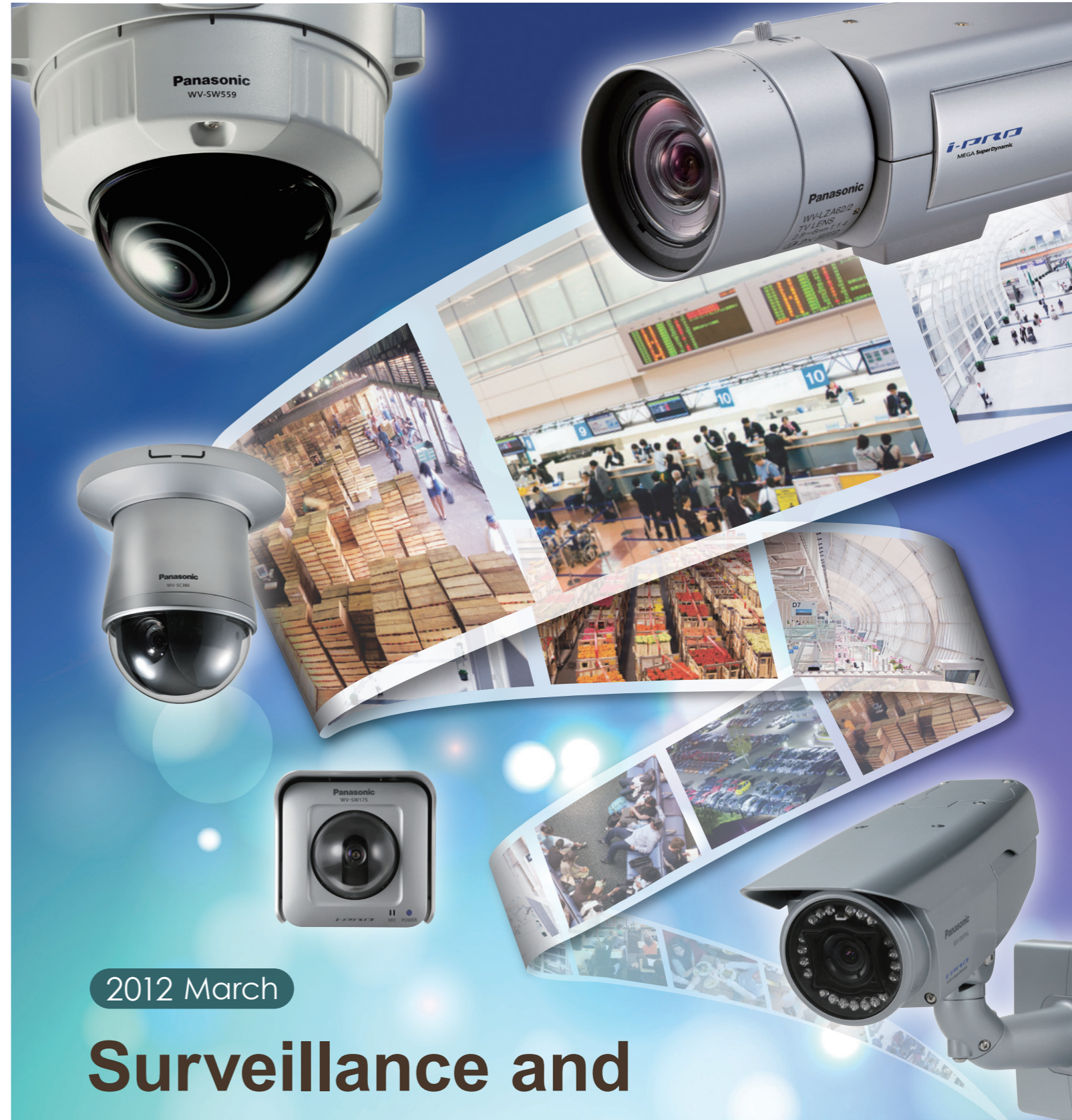


Panasonic

ideas for life



Trademarks and registered trademarks

- HDMI, the HDMI logo and High-Definition Multimedia Interface are trademarks or registered trademarks of HDMI Licensing, LLC.
- UniPhier is a registered trademark of Panasonic Corporation.
- "Super Dynamic", "SDII", "SDIII", "SD5", "SD5Link", "SD6", "i-PRO" and "i-PRO SmartHD" logos are trademarks or registered trademarks of Panasonic Corporation.
- All other trademarks identified herein are the property of their respective owners.
- ONVIF and the ONVIF logo are trademarks of ONVIF Inc.

Important

- Safety Precaution: carefully read the operating instructions and installation manual before using this product.
- Panasonic can not be responsible for network performance and/or other manufacturer products that reside on the network.
- This catalog is provided for all over the world. Some accessories may not be available in some countries.
- UniPhier is Panasonic's proprietary System LSI platform.

Security Cautions

- When using the products in this catalog, take appropriate measures to avoid the following security breaches.
- Disclosure of private information via the products.
- Unauthorized use of products by a third party.
- Interference or suspension of the use of the products by third party.

- All pictures are simulated.
- Masses and dimensions are approximate.
- Design and Specifications are subject to change without notice.
- These products may be subject to export control regulations.

DISTRIBUTED BY:

Panasonic[®]

<http://panasonic.net/security/>
Printed in Japan (2B-005GA)

2012 March

Surveillance and Monitoring Systems Lineup

Network Products

- Dome Network Cameras...3,4,7
- Fixed Dome Network Cameras...4,5,6,7
- Fixed Network Cameras...7,8
- Network Cameras...9,10
- Network Video Recorders...11
- Network Video Encoder / Decoder...12
- Network Converter...12
- Software...13

Analog Products

- Dome Cameras...14
- Fixed Dome Cameras...15
- Fixed Cameras...16
- Digital Video Recorders...17
- System Controllers...17
- Matrix Switching System...17

Lenses

- Lenses...18
- Cameras / Lenses Combination Chart...18
- Lens Selection Chart...18

New Technology for Analog products



New "Superior Reality" processor realizes much high efficiency, such as high resolution, color reproducibility, high sensitivity, lens distortion, auto tracking (PTZ camera only), scene change detection (fixed camera only), auto image stabilizer.

Feature names

Full High Definition	High Definition	H.264, MPEG-4 and JPEG supported	H.264 and JPEG supported	MPEG-4 and JPEG supported	MPEG-4 supported		
72x Extra Optical Zoom	36x Extra Optical Zoom	36x Optical Zoom	30x Optical Zoom	22x Optical Zoom	21x Optical Zoom	2.3x Optical Zoom	VIQS 2 areas VIQS (Variable Image Quality on Specified area)
Face Detection	Face Matching	Auto Back Focus	Wireless Communication	Human Detection Sensor			
Cell Phone Monitoring	Day&Night (IR)	Day&Night (Electrical)	Water and Dust Resistance: IP55	Water and Dust Resistance: IP66			
Vandal Resistant	Sound Detection	Color Night View Mode	Built-in LED Light	Intelligent-Video Motion Detection	Shock Detection		

Dome Network Cameras

Super Dynamic Weather Resistant HD Dome Network Camera
WV-SW396
(24 V AC or PoE Plus: NTSC, PAL)



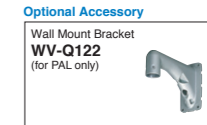
- 720p HD images up to 30 fps
- Newly developed 1.3 Megapixel double speed MOS Sensor
- High resolution recording by "UniPhier"
- Full frame (Up to 30 fps) transmission at 1,280 x 960 image size
- High sensitivity with Day/Night function : 0.5 lx (Color), 0.06 lx (B/W) at F1.4 (Wide)
- **Super Dynamic** 128x wider dynamic range
- **Face Super Dynamic** technology ensures clear face image.
- 36x optical zoom with 12x digital zoom enabling 432x zoom.
- 72x extra optical zoom at VGA resolution with 12x digital zoom enabling 864x zoom.
- **360 degrees endless Panning**
- Advanced auto tracking
- Supports Power over Ethernet Plus (PoE+) IEEE 802.3at (does not support IEEE802.3af)
- Dehumidification device for use in various weather conditions
- Smart phone Monitoring
- ONVIF compliant model



Super Dynamic Weather Resistant HD Dome Network Camera
WV-SW395
(24 V AC or PoE Plus: NTSC, PAL)



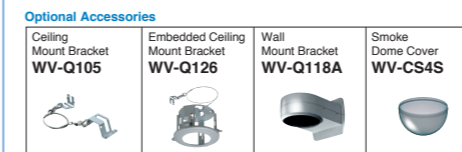
- 720p HD images up to 30 fps
- Newly developed 1.3 Megapixel double speed MOS Sensor
- High resolution recording by "UniPhier"
- Full frame (Up to 30 fps) transmission at 1,280 x 960 image size
- High sensitivity: 0.5 lx (Color), 0.06 lx (B/W) at F1.6 (Wide) / 0.031 lx (Color), 0.004 lx (B/W) at F1.6 (Wide) with Sens Up 16x
- **Super Dynamic** 128x wider dynamic range
- **Face Super Dynamic** technology ensures clear face image.
- 18x optical zoom with 12x digital zoom enabling 216x zoom.
- 36x extra optical zoom at VGA resolution with 12x digital zoom enabling 432x zoom.
- Panning with auto flip function can be performed 0 to 360 degrees
- Auto tracking
- Supports Power over Ethernet Plus (PoE+) IEEE 802.3at (does not support IEEE 802.3af)
- Dehumidification device for use in various weather conditions
- Smart phone Monitoring
- ONVIF compliant model



Super Dynamic HD Dome Network Camera
WV-SC386
(12 V DC or PoE: NTSC, PAL)



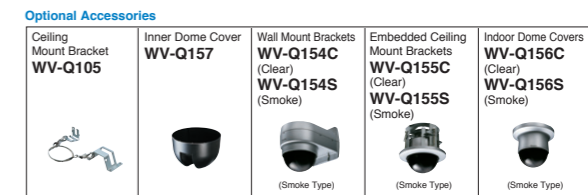
- 720p HD images up to 30 fps
- Newly developed 1.3 Megapixel double speed MOS Sensor
- High resolution recording by "UniPhier"
- Full frame (Up to 30 fps) transmission at 1,280 x 960 image size
- High sensitivity with Day/Night function : 0.5 lx (Color), 0.06 lx (B/W) at F1.4 (Wide)
- **Super Dynamic** 128x wider dynamic range
- **Face Super Dynamic** technology ensures clear face image.
- 36x optical zoom with 12x digital zoom enabling 432x zoom.
- 72x extra optical zoom at VGA resolution with 12x digital zoom enabling 864x zoom.
- **360 degrees endless Panning**
- Advanced auto tracking
- Supports Power over Ethernet (PoE) IEEE 802.3af
- Smart phone Monitoring
- ONVIF compliant model



Super Dynamic HD Dome Network Camera
WV-SC385
(12 V DC or PoE: NTSC, PAL)



- 720p HD images up to 30 fps
- Newly developed 1.3 Megapixel double speed MOS Sensor
- High resolution recording by "UniPhier"
- Full frame (Up to 30 fps) transmission at 1,280 x 960 image size
- High sensitivity: 0.5 lx (Color), 0.06 lx (B/W) at F1.6 (Wide) / 0.031 lx (Color), 0.004 lx (B/W) at F1.6 (Wide) with Sens Up 16x
- **Super Dynamic** 128x wider dynamic range
- **Face Super Dynamic** technology ensures clear face image.
- 18x optical zoom with 12x digital zoom enabling 216x zoom.
- 36x extra optical zoom at VGA resolution with 12x digital zoom enabling 432x zoom.
- Panning with auto flip function can be performed 0 to 360 degrees
- Auto tracking
- Supports Power over Ethernet (PoE) IEEE 802.3af
- Smart phone Monitoring
- Desktop/Ceiling position choice and various optional brackets for versatile installations
- ONVIF compliant model



HD Dome Network Camera
WV-SC384
(12 V DC or PoE: NTSC, PAL)



- 720p HD images up to 30 fps
- Newly developed 1.3 Megapixel MOS Sensor
- High resolution recording by "UniPhier"
- Full frame (Up to 30 fps) transmission at 1,280 x 960 image size
- High sensitivity: 0.6 lx (Color), 0.5 lx (B/W) at F1.6 (Wide) / 0.038 lx (Color), 0.031 lx (B/W) at F1.6 (Wide) with Sens Up 16x
- Wide Dynamic Range and ABS (Adaptive Black Stretch) technologies deliver wider dynamic range compared with conventional cameras.
- Face Wide Dynamic Range technology ensures clear face image.
- 18x optical zoom with 8x digital zoom enabling 144x zoom.
- 36x extra optical zoom at VGA resolution with 8x digital zoom enabling 288x zoom.
- Panning with auto flip function can be performed 0 to 360 degrees
- Supports Power over Ethernet (PoE) IEEE 802.3af
- Smart phone Monitoring
- ONVIF compliant model



Super Dynamic III Weather Resistant Dome Network Camera
WV-NW960 Series
WV-NW960 (220 V -240 V AC: PAL)
WV-NW964 (24 V AC: NTSC, PAL)



- MPEG-4 and JPEG dual stream output at VGA image size with up to 30 ips
- High sensitivity: 0.5 lx (Color), 0.04 lx (B/W) at F1.4 (Wide) / 0.02 lx (Color), 0.0013 lx (B/W) at F1.4 (Wide) with Sens Up 32x
- **Super Dynamic III** 128x wider dynamic range
- IP66 rated water and dust resistant
- 30x (3.8 mm ~ 114 mm) zoom lens with 10x digital zoom
- Auto tracking capability
- Progressive Output



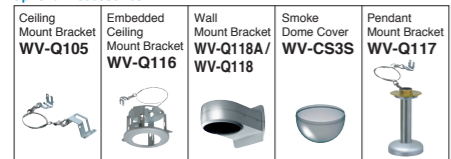
Dome Network Cameras

Super Dynamic III
Day/Night Dome Network Camera
WV-NS950 Series
WV-NS950 (220 V -240 V AC: PAL)
WV-NS954 (24 V AC: NTSC, PAL)



- MPEG-4 and JPEG dual stream output at VGA image size with up to 30 ips
- High sensitivity: 0.5 lx (Color), 0.04 lx (B/W) at F1.4 (Wide) / 0.02 lx (Color), 0.0013 lx (B/W) at F1.4 (Wide) with Sens Up 32x
- **Super Dynamic III** 128x wider dynamic range
- 30x (3.8 mm ~ 114 mm) zoom lens with 10x digital zoom
- Auto tracking capability
- Progressive Output

Optional Accessories



Super Dynamic III
Day/Night Dome Network Camera
WV-NS202A
(12 V DC or PoE: NTSC, PAL)
(Limited Quantity)



- MPEG-4 and JPEG dual stream output at VGA image size with up to 30 ips
- High sensitivity: 0.7 lx (Color), 0.5 lx (B/W) at F1.6 (Wide) / 0.02 lx (Color), 0.015 lx (B/W) at F1.6 (Wide) with Sens Up 32x
- **Super Dynamic III** 128x wider dynamic range
- 22x zoom lens with 10x digital zoom
- Auto tracking capability
- Progressive Output
- Power over Ethernet (PoE) IEEE 802.3af

Optional Accessories



Dome Network Camera
BB-HCM581 / HCM580
BB-HCM581 (12 V DC or PoE: NTSC, PAL)
BB-HCM580 (12 V DC: NTSC, PAL)
(Limited Quantity)



- 21x zoom lens with 2x Digital Zoom
- MPEG-4 and JPEG dual stream output
- Image Transfer Function
- Remote Pan and Tilt Control
- Multi-camera Capability
- SD Memory Card Recording
- Progressive Scan
- Audio 2-way Communication (BB-HCM581 only)
- Analog Video Output (NTSC/PAL)
- Power over Ethernet (PoE) IEEE 802.3af (BB-HCM581 only)
- Cell Phone Monitoring

Fixed Dome Network Cameras

Super Dynamic
Full HD Vandal Resistant Dome Network Camera
WV-SW559
(12 V DC or PoE:NTSC,PAL)



- 1080p Full HD images up to 30 fps and 360p image up to 30fps simultaneously.
- Super high resolution at Full HD/1,920 x 1,080 created by 3.1Megapixel high sensitivity MOS Sensor.
- Combining enhanced "UniPhier", Panasonic's proprietary System LSI platform and **2 areas VIQS** (Variable Image Quality on Specified area) function can decrease network bandwidth.
- **Super Dynamic** and ABS (Adaptive Black Stretch) technologies deliver 128x wider dynamic range compared to conventional cameras.
- **Face Super Dynamic** Range technology ensures clear face image.
- 3x Extra optical zoom at 360p resolution. (Picture Mode : 2 Mega pixel [16:9])
- High sensitivity with Day & Night (IR) function:0.5 lx (Color), 0.06 lx (B/W) at F1.3
- IP66 rated water and dust resistant. Compatible with IEC60529 measurement standard.
- Dehumidification device for use in various weather conditions
- Vandal resistant mechanism for high reliability
- Smart phone Monitoring
- ONVIF compliant model

Optional Accessories



Super Dynamic
Full HD Vandal Resistant Dome Network Camera
WV-SW558
(12 V DC or PoE:NTSC,PAL)



- 1080p Full HD images up to 30 fps and 360p image up to 30fps simultaneously.
- Super high resolution at Full HD/1,920 x 1,080 created by 3.1Megapixel high sensitivity MOS Sensor.
- Combining enhanced "UniPhier", Panasonic's proprietary System LSI platform and **2 areas VIQS** (Variable Image Quality on Specified area) function can decrease network bandwidth.
- **Super Dynamic** and ABS (Adaptive Black Stretch) technologies deliver 128x wider dynamic range compared to conventional cameras.
- **Face Super Dynamic** Range technology ensures clear face image.
- 3x Extra optical zoom at 360p resolution. (Picture Mode : 2 Mega pixel [16:9])
- High sensitivity with Day & Night (Electrical) function:0.5 lx (Color), 0.3 lx (B/W) at F1.3
- IP66 rated water and dust resistant. Compatible with IEC60529 measurement standard.
- Dehumidification device for use in various weather conditions
- Vandal resistant mechanism for high reliability
- Smart phone Monitoring
- ONVIF compliant model

Optional Accessories



Super Dynamic
HD Vandal Resistant Dome Network Camera
WV-SW355
(12 V DC or PoE: NTSC, PAL)



- 720p HD images up to 30 fps
- Newly developed 1.3 Megapixel high sensitivity MOS Sensor
- High sensitivity: 0.3 lx (Color), 0.05 lx (B/W) at F1.6 (Wide) / 0.019 lx (Color), 0.003 lx (B/W) at F1.6 (Wide) with Sens Up 16x
- **Super Dynamic** 128x wider dynamic range
- **Face Super Dynamic** technology ensures clear face image
- Up to 7.2x extra optical zoom at VGA resolution
- VIQS (Variable Image Quality on Specified area) technology allows the designated area to retain higher image quality while the excluded area will have a decreased image quality, which enables to use lower image file size and bit rate.
- Dehumidification device for use in various weather conditions
- Vandal resistant mechanism for high reliability
- Supports Power over Ethernet (PoE) IEEE 802.3af
- Smart phone Monitoring
- ONVIF compliant model

Optional Accessories



Super Dynamic
Vandal Resistant Dome Network Camera
WV-SW352
(12 V DC or PoE: NTSC, PAL)



- Super high resolution at SVGA/800 x 600 created by newly developed 1.3 Megapixel high sensitivity MOS Sensor
- High sensitivity: 0.2 lx (Color), 0.04 lx (B/W) at F1.6 (Wide) / 0.013 lx (Color), 0.002 lx (B/W) at F1.6 (Wide) with Sens Up 16x
- **Super Dynamic** 128x wider dynamic range
- **Face Super Dynamic** technology ensures clear face image
- Up to 7.2x extra optical zoom at VGA resolution
- VIQS (Variable Image Quality on Specified area) technology allows the designated area to retain higher image quality while the excluded area will have a decreased image quality, which enables to use lower image file size and bit rate.
- Dehumidification device for use in various weather conditions
- Vandal resistant mechanism for high reliability
- Supports Power over Ethernet (PoE) IEEE 802.3af
- Smart phone Monitoring
- ONVIF compliant model

Optional Accessories



Fixed Dome Network Cameras

Super Dynamic
HD Vandal Resistant Dome Network Camera
WV-SW155 / SW155M
(PoE : NTSC,PAL)



- 720p HD images up to 30 fps
- 1.3 Megapixel high sensitivity MOS Sensor
- High resolution recording by "UniPhier"
- Full frame (Up to 30 fps) transmission at 1,280 x 960 image size
- High sensitivity with Day & Night (Electrical) function: 0.8 lx (Color), 0.6 lx (B/W) at F2.2
- **Super Dynamic** and ABS (Adaptive Black Stretch) technologies deliver 128x wider dynamic range compared to conventional cameras.
- **Face Super Dynamic** Range technology ensures clear face image.
- 2x extra zoom at VGA resolution
- Supports Power over Ethernet IEEE 802.3at
- Vandal resistant mechanism for high reliability
- Low profile design for discrete installation
- "Railway applications – Electronics equipment used on rolling stock" compatible with EN50155
- Wide coverage (Horizontal: 104 °, Vertical: 85 °)
- IP66 rated water and dust resistant. Compatible with IEC60529 measurement standard.
- ONVIF compliant model

Optional Accessory



Super Dynamic
Vandal Resistant Dome Network Camera
WV-SW152 / SW152M
(PoE : NTSC,PAL)



- Super high resolution at SVGA/800 x 600 created by 1.3 Megapixel high sensitivity MOS Sensor
- High resolution recording by "UniPhier"
- Full frame (Up to 30 fps) transmission at SVGA (800 x 600) image size
- High sensitivity with Day & Night (Electrical) function: 0.6 lx (Color), 0.4 lx (B/W) at F2.2
- **Super Dynamic** and ABS (Adaptive Black Stretch) technologies deliver 128x wider dynamic range compared to conventional cameras.
- **Face Super Dynamic** Range technology ensures clear face image.
- 2x extra zoom at VGA resolution
- Supports Power over Ethernet IEEE 802.3at
- Vandal resistant mechanism for high reliability
- Low profile design for discrete installation
- "Railway applications – Electronics equipment used on rolling stock" compatible with EN50155
- Wide coverage (Horizontal: 104 °, Vertical: 85 °)
- IP66 rated water and dust resistant. Compatible with IEC60529 measurement standard.
- ONVIF compliant model

Optional Accessory

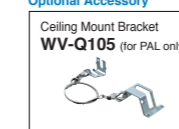


Super Dynamic
Full HD Vandal Resistant Dome Network Camera
WV-SF549
(12 V DC or PoE:NTSC,PAL)
Launches in June 2012



- 1080p Full HD images up to 30 fps and 360p image up to 30fps simultaneously.
- Super high resolution at Full HD/1,920 x 1,080 created by 3.1Megapixel high sensitivity MOS Sensor.
- Combining enhanced "UniPhier", Panasonic's proprietary System LSI platform and **2 areas VIQS** (Variable Image Quality on Specified area) function can decrease network bandwidth.
- **Super Dynamic** and ABS (Adaptive Black Stretch) technologies deliver 128x wider dynamic range compared to conventional cameras.
- **Face Super Dynamic** Range technology ensures clear face image.
- 3x Extra optical zoom at 360p resolution. (Picture Mode : 2 Mega pixel [16:9])
- High sensitivity with Day & Night (IR) function:0.5 lx (Color), 0.06 lx (B/W) at F1.3
- Vandal resistant mechanism for high reliability
- Smart phone Monitoring
- ONVIF compliant model

Optional Accessory

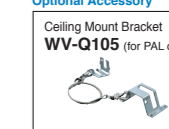


Super Dynamic
Full HD Vandal Resistant Dome Network Camera
WV-SF548
(12 V DC or PoE:NTSC,PAL)
Launches in June 2012



- 1080p Full HD images up to 30 fps and 360p image up to 30fps simultaneously.
- Super high resolution at Full HD/1,920 x 1,080 created by 3.1Megapixel high sensitivity MOS Sensor.
- Combining enhanced "UniPhier", Panasonic's proprietary System LSI platform and **2 areas VIQS** (Variable Image Quality on Specified area) function can decrease network bandwidth.
- **Super Dynamic** and ABS (Adaptive Black Stretch) technologies deliver 128x wider dynamic range compared to conventional cameras.
- **Face Super Dynamic** Range technology ensures clear face image.
- 3x Extra optical zoom at 360p resolution. (Picture Mode : 2 Mega pixel [16:9])
- High sensitivity with Day & Night (Electrical) function:0.5 lx (Color), 0.3 lx (B/W) at F1.3
- Vandal resistant mechanism for high reliability
- Smart phone Monitoring
- ONVIF compliant model

Optional Accessory

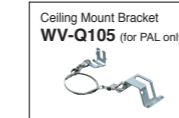


HD Vandal Resistant
Dome Network Camera
WV-SF346
(12 V DC or PoE: NTSC, PAL)



- 720p HD images up to 30 fps
- Progressive scan 1.3 Megapixel MOS Sensor
- High resolution recording by "UniPhier"
- Full frame (Up to 30 fps) transmission at 1,280 x 960 image size
- High sensitivity: 0.3 lx (Color), 0.2 lx (B/W) at F1.3 (Wide) / 0.019 lx (Color), 0.013 lx (B/W) at F1.3 with Sens Up 16x
- Wide Dynamic Range and ABS (Adaptive Black Stretch) technologies deliver wider dynamic range compared with conventional cameras.
- Face Wide Dynamic Range technology ensures clear face Image.
- 2x extra zoom at VGA resolution
- Dual H.264 / MPEG-4 and JPEG simultaneous stream output
- Power over Ethernet (PoE) IEEE 802.3af
- ABF (Auto Back Focus) ensures easy installation and stable focus in both color and B/W modes.
- Smart phone Monitoring

Optional Accessory

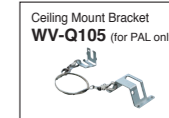


Vandal Resistant
Dome Network Camera
WV-SF342
(12 V DC or PoE: NTSC, PAL)



- Super high resolution at SVGA/800 x 600 created by newly developed 1.3 Megapixel high sensitivity MOS Sensor
- Full frame (Up to 30 fps) transmission at SVGA/800 x 600 image size
- High sensitivity: 0.2 lx (Color), 0.13 lx (B/W) at F1.3 (Wide) / 0.013 lx (Color), 0.009 lx (B/W) at F1.3 with Sens Up 16x
- Wide Dynamic Range and ABS (Adaptive Black Stretch) technologies deliver wider dynamic range compared with conventional cameras.
- Face Wide Dynamic Range technology ensures clear face Image.
- 2x extra zoom at VGA resolution
- Dual H.264 / MPEG-4 and JPEG simultaneous stream output
- Power over Ethernet (PoE) IEEE 802.3af
- Smart phone Monitoring

Optional Accessory



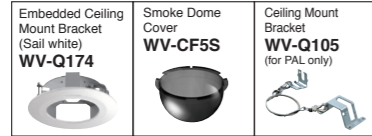
Fixed Dome Network Cameras

Super Dynamic Full HD Dome Network Camera
WV-SF539
(12 V DC or PoE:NTSC,PAL)
Launches in June 2012



- 1080p Full HD images up to 30 fps and 360p image up to 30fps simultaneously.
- Super high resolution at Full HD/1,920 x 1,080 created by 3.1Megapixel high sensitivity MOS Sensor.
- Combining enhanced "UniPhier", Panasonic's proprietary System LSI platform and **2 areas VIQS** (Variable Image Quality on Specified area) function can decrease network bandwidth.
- **Super Dynamic** and ABS (Adaptive Black Stretch) technologies deliver 128x wider dynamic range compared to conventional cameras.
- **Face Super Dynamic** Range technology ensures clear face image.
- **3x Extra optical zoom** at 360p resolution. (Picture Mode : 2 Mega pixel [16:9])
- High sensitivity with Day & Night (IR) function:0.5 lx (Color), 0.06 lx (B/W) at F1.3
- Smart phone Monitoring
- ONVIF compliant model

Optional Accessories



Super Dynamic Full HD Dome Network Camera
WV-SF538
(12 V DC or PoE:NTSC,PAL)
Launches in June 2012



- 1080p Full HD images up to 30 fps and 360p image up to 30fps simultaneously.
- Super high resolution at Full HD/1,920 x 1,080 created by 3.1Megapixel high sensitivity MOS Sensor.
- Combining enhanced "UniPhier", Panasonic's proprietary System LSI platform and **2 areas VIQS** (Variable Image Quality on Specified area) function can decrease network bandwidth.
- **Super Dynamic** and ABS (Adaptive Black Stretch) technologies deliver 128x wider dynamic range compared to conventional cameras.
- **Face Super Dynamic** Range technology ensures clear face image.
- **3x Extra optical zoom** at 360p resolution. (Picture Mode : 2 Mega pixel [16:9])
- High sensitivity with Day & Night (Electrical) function:0.5 lx (Color), 0.3 lx (B/W) at F1.3
- Smart phone Monitoring
- ONVIF compliant model

Optional Accessories



HD Dome Network Camera
WV-SF336
(12 V DC or PoE: NTSC, PAL)



- 720p HD images up to 30 fps
- Progressive scan 1.3 Megapixel MOS Sensor
- High resolution recording by "UniPhier"
- Full frame (Up to 30 fps) transmission at 1,280 x 960 image size
- High sensitivity: 0.3 lx (Color), 0.2 lx (B/W) at F1.3 (Wide) / 0.019 lx (Color), 0.013 lx (B/W) at F1.3 with Sens Up 16x
- Wide Dynamic Range and ABS (Adaptive Black Stretch) technologies deliver wider dynamic range compared with conventional cameras.
- Face Wide Dynamic Range technology ensures clear face Image.
- 2x extra zoom at VGA resolution
- Dual H.264 / MPEG-4 and JPEG simultaneous stream output
- Power over Ethernet (PoE) IEEE 802.3af
- ABF (Auto Back Focus) ensures easy installation
- Smart phone Monitoring

Optional Accessories



HD Dome Network Camera
WV-SF335
(12 V DC or PoE: NTSC, PAL)



- 720p HD images up to 30 fps
- Progressive scan 1.3 Megapixel MOS Sensor
- High resolution recording by "UniPhier"
- Full frame (Up to 30 fps) transmission at 1,280 x 960 image size
- High sensitivity: 0.3 lx (Color), 0.2 lx (B/W) at F1.3 (Wide) / 0.019 lx (Color), 0.013 lx (B/W) at F1.3 with Sens Up 16x
- Wide Dynamic Range and ABS (Adaptive Black Stretch) technologies deliver wider dynamic range compared with conventional cameras.
- Face Wide Dynamic Range technology ensures clear face Image.
- 2x extra zoom at VGA resolution
- Dual H.264 / MPEG-4 and JPEG simultaneous stream output
- Power over Ethernet (PoE) IEEE 802.3af
- Smart phone Monitoring

Optional Accessories



Dome Network Camera
WV-SF332
(12 V DC or PoE: NTSC, PAL)



- Progressive scan 1.3 Megapixel MOS Sensor
- High resolution recording by "UniPhier"
- Up to 30 fps at SVGA/800 x 600 image size
- High sensitivity: 0.2 lx (Color), 0.13 lx (B/W) at F1.3 (Wide) / 0.013 lx (Color), 0.009 lx (B/W) at F1.3 with Sens Up 16x
- Wide Dynamic Range and ABS (Adaptive Black Stretch) technologies deliver wider dynamic range compared with conventional cameras.
- Face Wide Dynamic Range technology ensures clear face Image.
- 2x extra zoom at VGA resolution
- Dual H.264 / MPEG-4 and JPEG simultaneous stream output
- Power over Ethernet (PoE) IEEE 802.3af
- Smart phone Monitoring

Optional Accessories



HD Dome Network Camera
WV-SF135
(PoE : NTSC,PAL)



- 720p HD images up to 30 fps
- 1.3 Megapixel high sensitivity MOS Sensor
- High resolution recording by "UniPhier"
- High sensitivity with Day & Night (Electrical) function 0.8 lx (Color), 0.6 lx (B/W) at F2.2
- 2x extra zoom at VGA resolution
- Supports Power over Ethernet (PoE) IEEE 802.3af
- Low profile design for discrete installation
- Wide coverage (Horizontal: 104°, Vertical: 85°)
- ONVIF compliant model

Optional Accessory



Dome Network Camera
WV-SF132
(PoE : NTSC,PAL)



- Progressive scan 320,000 Pixel MOS Sensor
- High resolution recording by "UniPhier"
- High sensitivity with Day & Night (Electrical) function 2.0 lx (Color), 1.3 lx (B/W) at F2.9
- Supports Power over Ethernet (PoE) IEEE 802.3af
- Low profile design for discrete installation
- ONVIF compliant model

Optional Accessory



Fixed Dome Network Cameras

Super Dynamic HD Vandal Resistant Dome Network Camera
WV-NW502S
(12 V DC or PoE: NTSC, PAL)



- 1080p HD images up to 15 fps / 720p HD images up to 30 fps
- Full frame (Up to 30 fps) transmission at 1,280 x 960 image size*
- High sensitivity: 1.0 lx (Color), 0.08 lx (B/W) at F1.2 (Wide) / 0.06 lx (Color), 0.005 lx (B/W) at F1.2 (Wide) with Sens Up 16x*
- **Super Dynamic** 128x wider dynamic range
- **Face Super Dynamic** technology ensures clear face image
- Up to 2,048 x 1,536 JPEG stream
- Dual H.264 / MPEG-4 and JPEG simultaneous stream output
- ABF (Auto Back Focus) and ABS (Adaptive Black Stretch)
- Progressive Output
- Power over Ethernet (PoE) IEEE 802.3af
- Smart phone Monitoring

Optional Accessories



Super Dynamic III Vandal Resistant Dome Network Camera
WV-NW484S (24 V AC or 12 V DC or PoE: NTSC, PAL)
(Limited Quantity)



- MPEG-4 and JPEG dual stream output at VGA image size with up to 30 ips
- High sensitivity: 0.6 lx (Color), 0.08 lx (B/W) at F1.4 (Wide) / 0.019 lx (Color), 0.003 lx (B/W) at F1.4 (Wide) with Sens Up 32x
- **Super Dynamic III** 128x wider dynamic range
- 2x (3.8 mm ~ 8.0 mm) varifocal lens built-in
- IP66 rated water and dust resistant
- ABF (Auto Back Focus) adjustment
- Progressive Output
- Power over Ethernet (PoE) IEEE 802.3af

Optional Accessories



Dome Network Cameras

Fixed Dome Network Camera
BB-HCM705 (12 V DC or PoE: NTSC, PAL)
(Limited Quantity)

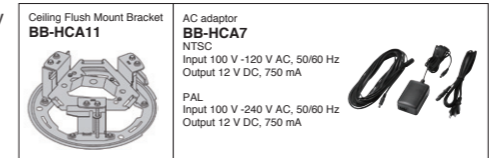


Fixed Dome Network Camera
BB-HCM701 (12 V DC or PoE: NTSC, PAL)
(Limited Quantity)



- Extra Zoom Function (only BB-HCM705)
- 3x Digital Zoom Function (by area) (only BB-HCM701)
- H.264 and JPEG dual stream output
- Compact size and good conformity with the ceiling
- Easy installation on ceiling / wall
- Sound Detection & Shock Detection Sensor
- Preset sequence (only BB-HCM705)
- 2x2 pixel binning (only BB-HCM705)
- Multi-camera capability
- Power over ethernet (PoE) IEEE 802.3af
- SDHC/SD Memory Card Recording
- Cell Phone Monitoring

Optional Accessories



Dome Network Camera
BB-HCM547 (12 V DC or PoE: NTSC, PAL)
(Limited Quantity)

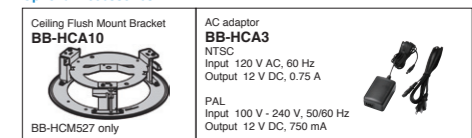


Dome Network Camera
BB-HCM527 (12 V DC or PoE: NTSC, PAL)
(Limited Quantity)



- MPEG-4 and JPEG dual stream output
- 2.3x Optical Zoom, 2x Digital Zoom
- Remote Pan and Tilt control
- Audio 2-Way communication
- SDHC/SD Memory Card recording
- Splash-resistant body (only BB-HCM547)
- Analog video Output (NTSC/PAL)
- Multi-camera capability (only BB-HCM527)
- Power over ethernet (PoE) IEEE 802.3af
- Cell Phone Monitoring

Optional Accessories



*When you use more than one(1) PCs to see any moving image by H.264, you are requested to buy User License Accessory (Item No. BB-HCA8) additionally. Models: BB-HCM705 / BB-HCM701
*When you use more than one(1) PCs to see any moving image by MPEG-4, you are requested to buy User License Accessory (Item No. BB-HCA5) additionally. Models:BB-HCM705 / BB-HCM701 / BB-HCM547 / BB-HCM527

Fixed Network Cameras

Super Dynamic Weather Resistant HD Network Camera
WV-SW316L
(12 V DC or PoE:NTSC,PAL)
Launches in April 2012



- 720p HD images up to 30 fps
- Newly developed 1.3 Megapixel high sensitivity MOS Sensor
- Multiple H.264 (High profile) streams by "UniPhier"
- Full frame (Up to 30 fps) transmission at 1,280 x 960 image size
- **Face Super Dynamic** Range technology ensures clear face image.
- **Super Dynamic** and ABS (Adaptive Black Stretch) technologies deliver
- Up to 6.4x Extra Optical Zoom under VGA resolution.
- IR LED equipped: The equipped infrared LED makes it possible to take pictures at zero lx.
- Smart phone Monitoring
- ONVIF compliant model

Optional Accessory



Super Dynamic Weather Resistant HD Network Camera
WV-SW316
(12 V DC or PoE:NTSC,PAL)



- 720p HD images up to 30 fps
- Newly developed 1.3 Megapixel high sensitivity MOS Sensor
- Multiple H.264 (High profile) streams by "UniPhier"
- Full frame (Up to 30 fps) transmission at 1,280 x 960 image size
- **Face Super Dynamic** Range technology ensures clear face image.
- **Super Dynamic** and ABS (Adaptive Black Stretch) technologies deliver 128x wider dynamic range compared to conventional cameras.
- Up to 6.4x Extra Optical Zoom under VGA resolution
- Smart phone Monitoring
- ONVIF compliant model

Optional Accessory



Super Dynamic Weather Resistant HD Network Camera
WV-SW314
(PoE:NTSC)



- 720p HD images up to 30 fps
- Newly developed 1.3 Megapixel high sensitivity MOS Sensor
- Multiple H.264 (High profile) streams by "UniPhier"
- Full frame (Up to 30 fps) transmission at 1,280 x 960 image size
- **Face Super Dynamic** Range technology ensures clear face image.
- **Super Dynamic** and ABS (Adaptive Black Stretch) technologies deliver
- Up to 7.2x Extra Optical Zoom under VGA resolution.
- Smart phone Monitoring
- ONVIF compliant model

Optional Accessory



Fixed Network Cameras

Super Dynamic Full HD Network Camera
WV-SP509
(12V DC or PoE:NTSC,PAL)



Lens: optional



- Super high resolution at Full HD/1,920 x 1,080 created by 3.1Megapixel high sensitivity MOS Sensor.
- 1080p Full HD images up to 30 fps and 360p image up to 30fps simultaneously.
- Combining enhanced "UniPhier", Panasonic's proprietary System LSI platform and **2 areas VIQS** (Variable Image Quality on Specified area) function can decrease network bandwidth.
- **Super Dynamic** and ABS (Adaptive Black Stretch) technologies deliver 128x wider dynamic range compared to conventional cameras.
- 3x Extra optical zoom at 360p resolution. (Picture Mode : 2 Mega pixel [16:9])
- High sensitivity with Day & Night (IR) function:0.5 lx (Color), 0.06 lx (B/W) at F1.4
- ABF ensures stable focus in both color and B/W modes.
- Smart phone Monitoring
- ONVIF compliant model

Optional Accessory



Super Dynamic Full HD Network Camera
WV-SP508
(12V DC or PoE:NTSC,PAL)



Lens: optional



- Super high resolution at Full HD/1,920 x 1,080 created by 3.1Megapixel high sensitivity MOS Sensor.
- 1080p Full HD images up to 30 fps and 360p image up to 30fps simultaneously.
- Combining enhanced "UniPhier", Panasonic's proprietary System LSI platform and **2 areas VIQS** (Variable Image Quality on Specified area) function can decrease network bandwidth.
- **Super Dynamic** and ABS (Adaptive Black Stretch) technologies deliver 128x wider dynamic range compared to conventional cameras.
- 3x Extra optical zoom at 360p resolution. (Picture Mode : 2 Mega pixel [16:9])
- High sensitivity with Day & Night (Electrical) function:0.5 lx (Color), 0.3 lx (B/W) at F1.4
- Smart phone Monitoring
- ONVIF compliant model

Optional Accessory



HD Network Camera
WV-SP306
(12 V DC or PoE: NTSC, PAL)



Lens: optional



- 720p HD images up to 30 fps
- Progressive scan 1.3 Megapixel MOS Sensor
- Multiple H.264 (High Profile) streams by "UniPhier"
- Full frame (Up to 30 fps) transmission at 1,280 x 960 image size
- High sensitivity: 0.3 lx (Color), 0.05 lx (B/W) at F1.4 / 0.019 lx (Color), 0.003 lx (B/W) at F1.4 with Sens Up 16x
- Wide Dynamic Range and ABS (Adaptive Black Stretch) technologies deliver wider dynamic range compared with conventional cameras.
- Face Wide Dynamic Range technology ensures clear face image.
- 2x extra zoom at VGA resolution
- Dual H.264 / MPEG-4 and JPEG simultaneous stream output
- Power over Ethernet (PoE) IEEE 802.3af
- ABF (Auto Back Focus) ensures easy installation
- Smart phone Monitoring

Optional Accessory



HD Network Camera
WV-SP305
(12 V DC or PoE: NTSC, PAL)



Lens: optional



- 720p HD images up to 30 fps
- Progressive scan 1.3 Megapixel MOS Sensor
- Multiple H.264 (High Profile) streams by "UniPhier"
- Full frame (Up to 30 fps) transmission at 1,280 x 960 image size
- High sensitivity: 0.3 lx (Color), 0.2 lx (B/W) at F1.4 / 0.019 lx (Color), 0.013 lx (B/W) at F1.4 with Sens Up 16x
- Wide Dynamic Range and ABS (Adaptive Black Stretch) technologies deliver wider dynamic range compared with conventional cameras.
- Face Wide Dynamic Range technology ensures clear face image.
- 2x extra zoom at VGA resolution
- Dual H.264 / MPEG-4 and JPEG simultaneous stream output
- Power over Ethernet (PoE) IEEE 802.3af
- Smart phone Monitoring

Optional Accessory



Network Camera
WV-SP302
(12 V DC or PoE: NTSC, PAL)



Lens: optional

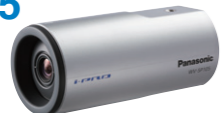


- Progressive scan 1.3 Megapixel MOS Sensor
- Multiple H.264 (High Profile) streams by "UniPhier"
- Up to 30 fps at SVGA/800 x 600 image size
- High sensitivity: 0.2 lx (Color), 0.13 lx (B/W) at F1.4 / 0.013 lx (Color), 0.009 lx (B/W) at F1.4 with Sens Up 16x
- Wide Dynamic Range and ABS (Adaptive Black Stretch) technologies deliver wider dynamic range compared to conventional cameras.
- Face Wide Dynamic Range technology ensures clear face image.
- 2x extra zoom at VGA resolution
- Dual H.264 / MPEG-4 and JPEG simultaneous stream output
- Power over Ethernet (PoE) IEEE 802.3af
- Smart phone Monitoring

Optional Accessory

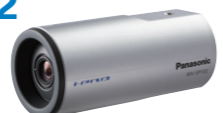


HD Network Camera
WV-SP105
(12 V DC or PoE: NTSC, PAL)



- 720p HD images up to 30 fps
- Progressive scan 1.3 Megapixel MOS Sensor
- Multiple H.264 (High Profile) streams by "UniPhier"
- Full frame (Up to 30 fps) transmission at 1,280 x 960 image size
- High sensitivity : 0.8 lx (Color), 0.4 lx (B/W) at F2.2 / 0.05 lx (Color), 0.03 lx (B/W) at F2.2 (Wide) with Sens Up 16x
- 2x extra zoom at VGA resolution
- Dual H.264 and JPEG simultaneous stream output
- Power over Ethernet (PoE) IEEE 802.3af
- Smart phone Monitoring

Network Camera
WV-SP102
(12 V DC or PoE: NTSC, PAL)



- Progressive scan 320,000 Pixel MOS Sensor
- Multiple H.264 (High Profile) streams by "UniPhier"
- Full frame (Up to 30 fps) transmission at VGA(640 x 480) image size
- High sensitivity : 2.0 lx (Color), 1.3 lx (B/W) at F2.0 / 0.3 lx (Color), 0.16 lx (B/W) at F2.0 (Wide) with Sens Up 8x
- Dual H.264 and JPEG simultaneous stream output
- Power over Ethernet (PoE) IEEE 802.3af
- Smart phone Monitoring

Super Dynamic HD Network Camera
WV-NP502
(12 V DC or PoE: NTSC, PAL)



Lens: optional



- 1,080p HD images up to 15 fps / 720p HD images up to 30 fps
- Full frame (Up to 30 fps) transmission at 1,280 x 960 image size*
- High sensitivity: 1.0 lx (Color), 0.08 lx (B/W) at F1.4 / 0.06 lx (Color), 0.005 lx (B/W) at F1.4 (Wide) with Sens Up 16x*
- **Super Dynamic** 128x wider dynamic range
- **Face Super Dynamic** technology ensures clear face image
- Up to 2,048 x 1,536 JPEG stream
- Dual H.264 / MPEG-4 and JPEG simultaneous stream output
- ABF (Auto Back Focus) and ABS (Adaptive Black Stretch)
- Progressive Output
- Power over Ethernet (PoE) IEEE 802.3af
- Smart phone Monitoring

Optional Accessory



Network Cameras

Outdoor Pan-tilt Network Camera
WV-SW175
(12V DC or PoE:NTSC,PAL)



- 720p HD images up to 30 fps
- 1.3 Megapixel high sensitivity MOS Sensor
- Full frame (Up to 30 fps) transmission at 1,280 x 960 image size
- 2x extra zoom at VGA resolution
- Pan-tilt and Preset Map Shot function realizes wide range monitoring. (Horizontal angle:180° Vertical angle 123°)
- IP55 rated water and dust resistant. Compatible with IEC60529
- Smart phone Monitoring
- ONVIF compliant model

Outdoor Pan-tilt Wireless Network Camera
WV-SW174W
(12V DC:NTSC,PAL)
Launches in April 2012



- 720p HD images up to 30 fps
- 1.3 Megapixel high sensitivity MOS Sensor
- Multiple H.264 (High profile) streams by "UniPhier"
- Full frame (Up to 30 fps) transmission at 1,280 x 960 image size
- Pan-tilt and Preset Map Shot function realizes wide range monitoring. (Horizontal angle:180° Vertical angle 123°)
- 2x extra zoom at VGA resolution
- Wireless LAN function (IEEE802.11 n/g/b)
- Smart phone Monitoring
- ONVIF compliant model

Outdoor Pan-tilt Network Camera
WV-SW172
(12V DC or PoE:NTSC,PAL)



- 1.3 Megapixel high sensitivity MOS Sensor
- Full frame (Up to 30 fps) transmission at SVGA (800 x 600) image size
- Pan-tilt and Preset Map Shot function realizes wide range monitoring. (Horizontal angle:180° Vertical angle 123°)
- 2x extra zoom at VGA resolution
- IP55 rated water and dust resistant. Compatible with IEC60529
- Smart phone Monitoring
- ONVIF compliant model

Pan-tilt Network Camera
WV-ST165
(12V DC or PoE:NTSC,PAL)



- 720p HD images up to 30 fps
- 1.3 Megapixel high sensitivity MOS Sensor
- Multiple H.264 (High profile) streams by "UniPhier"
- Full frame (Up to 30 fps) transmission at 1,280 x 960 image size
- 2x extra zoom at VGA resolution
- Panning/tilting and Preset Map Shot function realizes wide range monitoring. (Horizontal angle:180° Vertical angle 123°)
- Smart phone Monitoring
- ONVIF compliant model

Pan-tilt Network Camera
WV-ST162
(12V DC or PoE:NTSC,PAL)

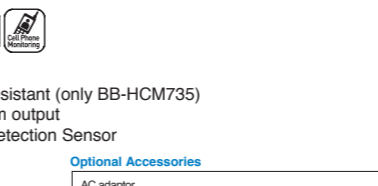


- 1.3 Megapixel high sensitivity MOS Sensor
- Multiple H.264 (High profile) streams by "UniPhier"
- Full frame (Up to 30 fps) transmission at SVGA (800 x 600) image size
- 2x extra zoom at VGA resolution
- Panning/tilting and Preset Map Shot function realizes wide range monitoring. (Horizontal angle:180° Vertical angle 123°)
- Smart phone Monitoring
- ONVIF compliant model

Network Camera
BB-HCM735
(12 V DC or PoE: NTSC, PAL)
(Limited Quantity)

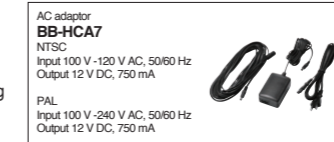


Network Camera
BB-HCM715
(12 V DC or PoE:NTSC, PAL)
(Limited Quantity)



- Extra Zoom Function
- IP55 rated water and dust resistant (only BB-HCM735)
- H.264 and JPEG dual stream output
- Sound Detection & Shock Detection Sensor
- Remote Pan and Tilt control
- Preset sequence
- 2x2 pixel binning
- Power over Ethernet (PoE) IEEE 802.3af
- SDHC/SD Memory Card recording
- Analog video output (NTSC/PAL)
- Cell Phone Monitoring

Optional Accessories



Network Camera
BB-HCM531
(12 V DC or PoE: NTSC, PAL)
(Limited Quantity)

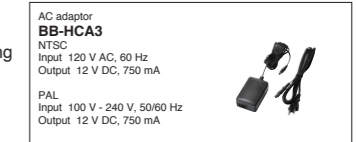


Network Camera
BB-HCM511
(12 V DC or PoE: NTSC, PAL)
(Limited Quantity)



- MPEG-4 and JPEG dual stream output
- 10x Digital Zoom
- Splash-resistant body (only BB-HCM531)
- Remote Pan and Tilt control
- Audio 2-Way communication
- Power over Ethernet (PoE) IEEE 802.3af
- SDHC/SD Memory Card recording
- Analog video output (NTSC/PAL)
- Cell Phone Monitoring

Optional Accessories



* When you use more than one(1) PCs to see any moving image by H.264, you are requested to buy User License Accessory (Item No. BB-HCA8) additionally. Models: BB-HCM735 / BB-HCM715
* When you use more than one(1) PCs to see any moving image by MPEG-4, you are requested to buy User License Accessory (Item No. BB-HCA5) additionally. Models: BB-HCM735 / BB-HCM715 / BB-HCM531 / BB-HCM511

Network Cameras

Pan-tilt Network Camera
BL-VT164
9 V DC (Use only with Panasonic AC adapter)
Launches in April 2012



- 720p HD images up to 30 fps
- 1.0 Megapixel high sensitivity CMOS Sensor
- Full frame (Up to 30 fps) transmission at 1,280 x 720 image size
- H.264 and JPEG dual stream output
- High sensitivity with Day & Night (Electrical) function: 0.9 lx (Color), 0.6 lx (B/W) at F2.8
- 1.5x extra zoom under VGA resolution
- Remote Pan and Tilt control
- Smart phone Monitoring

Pan-tilt Wireless Network Camera
BL-VT164W
9 V DC (Use only with Panasonic AC adapter)
Launches in April 2012



- 720p HD images up to 30 fps
- 1.0 Megapixel high sensitivity CMOS Sensor
- Full frame (Up to 30 fps) transmission at 1,280 x 720 image size
- H.264 and JPEG dual stream output
- High sensitivity with Day & Night (Electrical) function: 0.9 lx (Color), 0.6 lx (B/W) at F2.8
- 1.5x extra zoom under VGA resolution
- Remote Pan and Tilt control
- Smart phone Monitoring
- Wireless Communication (IEEE 802.11n/b/g)
- WPS (Wi-Fi Protected Setup) function

Network Camera
BL-C230
(100 V -240 V AC: NTSC,
220 V -240 V AC: PAL)



- H.264 and JPEG dual stream output
- 3x Digital zoom function
- TV Connection*
- External input and output connector
- Sound Detection Sensor
- Privacy mode
- SSL support
- Wireless Communication (IEEE 802.11b/g)
- Remote Pan and Tilt control
- Multi-camera capability
- Cell Phone Monitoring
- *For US model only

Network Camera
BL-C210
(100 V -240 V AC: NTSC,
220 V -240 V AC: PAL)



- H.264 and JPEG dual stream output
- 3x Digital zoom function (by area)
- TV Connection*
- External input connector
- Sound Detection Sensor
- Privacy mode
- SSL Support
- Remote Pan and Tilt control
- Multi-camera capability
- Cell Phone Monitoring
- *For US model only

Network Camera
BL-C160
(100 V -240 V AC: NTSC,
220 V -240 V AC: PAL)



- MPEG-4 and JPEG dual stream output
- Built-in LED Light
- Outdoor Ready (IPX4)
- 10x Digital Zoom Function
- Built-in Human Detection Sensor
- Motion Detection Function
- Image Transfer Function
- Cell Phone Monitoring

Network Camera
BL-C140
(100 V -240 V AC: NTSC,
220 V -240 V AC: PAL)



- MPEG-4 and JPEG dual stream output
- Outdoor ready (IPX4)
- 10x Digital Zoom Function
- Motion Detection Function
- Image Transfer Function
- Color Night View Mode (3.00 lx)
- Cell Phone Monitoring

Network Camera
BL-C131
(100 V -240 V AC: NTSC,
220 V -240 V AC: PAL)



(Limited Quantity)
Network Camera
BL-C111
(100 V -240 V AC: NTSC,
220 V -240 V AC: PAL)
(Limited Quantity)



- MPEG-4 and JPEG dual stream output
- 10x Digital Zoom Function
- Built-in microphone
- Wireless LAN (802.11b/802.11g) (only BL-C131)
- Built-in Human Detection Sensor
- Motion Detection Sensor
- Privacy mode
- Remote Pan and Tilt control
- Cell Phone Monitoring

Network Camera
BL-C121
(100 V -240 V AC: NTSC,
220 V -240 V AC: PAL)



- MPEG-4 and JPEG dual stream output
- 10x Digital Zoom Function
- Wireless Communication (IEEE 802.11b/g)
- Built-in microphone
- Multi-camera capability
- Motion Detection Function
- External input and output connector
- Detection Notification Sound
- Cell Phone Monitoring

Network Camera
BL-C101
(100 V -240 V AC: NTSC,
220 V -240 V AC: PAL)



- MPEG-4 and JPEG dual stream output
- 10x Digital Zoom Function
- Built-in microphone
- Motion Detection Sensor
- Privacy mode
- External input connector
- Detection Notification Sound
- Cell Phone Monitoring

*When you use more than one(1) PCs to see any moving image by H.264, you are requested to buy User License Accessory (Item No. BB-HCA8) additionally. Models: BL-C230 / BL-C210
*When you use more than one(1) PCs to see any moving image by MPEG-4, you are requested to buy User License Accessory (Item No. BB-HCA5) additionally. Models: BL-C230 / BL-C210 / BL-C160 / BL-C140 / BL-C131 / BL-C111 / BL-C121 / BL-C101

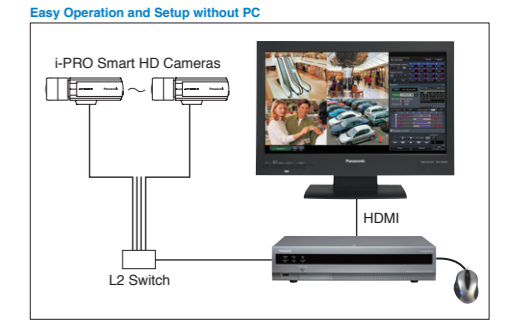
Network Video Recorders

Network Disk Recorder
WJ-NV200
(120 V AC: NTSC, 220 V -240 V AC: PAL)



- H.264, MPEG-4 and JPEG multi format
- Up to 16 network cameras can be connected and recorded.
- Quick setup by automatic camera detection and simple setup wizard without the use of PC
- Simple mouse operation by new GUI without the use of PC
- Supports the Full HD output (HDMI)
- Real Time Face Matching function by matching registered face images with a face displayed on live images
- ONVIF compliant model

Network Disk Recorder with DVD drive (for NTSC only)
WJ-NV200V
(120V AC)



Additional Business Intelligence Kit **WJ-NVF20**

- New statistical processing functions such as "People counting" and "Face matching / Age & Gender judgment"
- The number of detected human faces can be displayed on a statistical chart separated by age & gender for a single day or a specified time period.
- Age distribution groups are displayed by separate colors
- The statistical data can be saved as a CSV file on a SDHC/SD memory card or on a PC connected over a network.
- * CSV file: A file that can be edited using a spreadsheet software such as Microsoft® Office Excel®

* To use this product, it is necessary to register the license (Registration Key) for Additional Business Intelligence Kit into the NV200 in use.

Network Disk Recorder
WJ-ND400
(120 V AC: NTSC, 220-240 V AC: PAL)



RSA BSAFE™
RSA and BSAFE are either registered trademarks or trademarks of RSA Security Inc. in the U.S.

- H.264, MPEG-4 and JPEG multi format
- Up to 64 network cameras can be connected and recorded (Video and Audio)
- Various Recording Mode: Manual, Schedule including Event (Pre/Post), Emergency
- VMD search (works with i-PRO cameras or WJ-NT314)
- Up to 54 HDD slots with 9 HDD slots in the main unit and five WJ-HDE400 optional Extension Units each with 9 HDD slots
- RAID5/6, Embedded OS, Data encryption for reliability



Network Disk Recorder
WJ-ND300A
(120 V AC: NTSC, 220-240 V AC: PAL)



- H.264, MPEG-4 and JPEG multi format
- Up to 32 network cameras can be connected and recorded
- Up to 8 clients can monitor images and control WJ-ND300A simultaneously
- RAID5 capability with optional WJ-NDB301 RAID5 Board
- Various Recording Mode: Manual, Schedule, Event (Pre/Post), Emergency



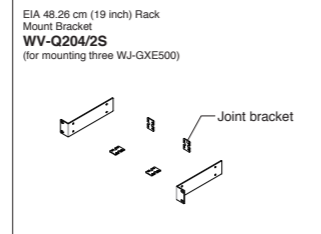
Network Video Encoder / Decoder

4 CH H.264 Video Encoder
WJ-GXE500
(12 V DC or PoE: NTSC, PAL)



- Up to 4 analog cameras can be connected.
- Panasonic Camera Control
- Full frame H.264 transmission for each 4 channels
- Dual H.264 / MPEG-4 and JPEG simultaneous stream output at VGA/D1 image size
- Face detection function detects the position of human face (CH1 only)
- Progressive Output
- Bi-directional audio (1CH)
- Power over Ethernet (PoE) IEEE 802.3af

Optional Accessories

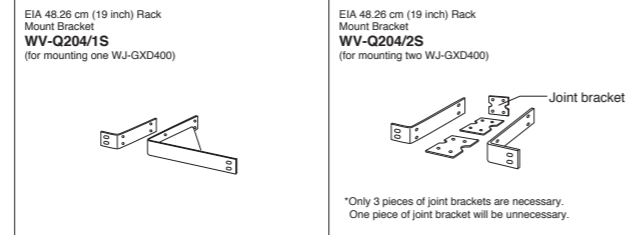


Multi Channel High Definition Video Decoder
WJ-GXD400
(12 V DC, 100 V -240 V AC adaptor attached: NTSC, PAL)



- Up to 256 cameras, including cameras connected to the i-Pro Network Video Encoder (WJ-GXE500/WJ-NT304/WJ-NT314), can be registered
- HDMI interface supporting 1,920 x 1,080 display size
- 1x 4VGA image with 2x VGA images or 6x VGA images can be displayed in multiscreen mode
- Each of VGA images can be displayed at 25 frames/s.
- Superior reliability and installation flexibility with an embedded OS
- Up to 64 camera groups can be registered and called up in response to power on, group sequence and schedule program.

Optional Accessories



Network Converter

Coaxial-LAN Converter with PoE function
BY-HPE11KT

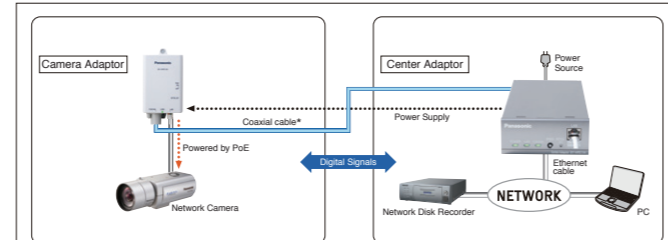


(Center Adaptor)

(Camera Adaptor)

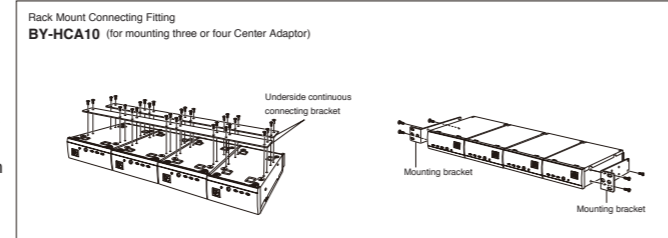
- Easy migration from analog to IP system with existing coaxial cable
- Power over Ethernet (PoE) IEEE 802.3af
- Up to 500 m (1,640 feet 5 inches)*1 for PoE connections, and 2 km (6,561 feet 8 inches) for non-PoE connections. (When used with RG-6/U coaxial cable.)
- 35 Mbps or over for TCP*2, and 45 Mbps or over for UDP connections. (When used with RG-6/U coaxial cable, and for distances under 2 km [6,561 feet 8 inches].)
- No setup required
- *1 When connected to a Panasonic network camera. *2 Measured using Linux® FTP.

System Example



*With PoE function: 500 m (1,640 feet 5 inches)/Without PoE function: 2 km (6,561 feet 8 inches)

Optional Accessory



Software

IP Matrix Server Software Version 5 **WV-ASC970** IP Matrix Client Software Version 4 **WV-ASM970**



(The pictures above are only for images.)

WV-ASC970

- Easy and smooth integration from analog to IP system
- Flexible system design: Analog, IP, and Hybrid analog/IP
- Up to 64 recorders, 1,024 monitors, and 2,048 cameras (in case with encoder) can be registered
- Camera/Sequence/Monitor selection, Camera control and Recorder control can be made with the optional system controller WV-CU950
- Supported Recorders: WJ-ND400 series, WJ-ND300 series, WJ-ND200 series, WJ-HD300 series, WJ-RT416 series, WJ-HD616/716 series

WV-ASM970

- Multi-Monitor option enables simultaneous use of Operation screen and Monitor screen (1 / 4 / 7 / 9 / 10 / 13 / 16 split) on a dedicated monitor. Two monitor operation is also available.
- Up to 30 ips/camera can be displayed in 16 split-screen in MPEG-4 2 Mbps mode (depending on the camera, camera setup and PC performance).
- Up to 30 ips/camera can be displayed in 16 split-screen in H.264 1.5 Mbps mode with VGA (depending on the camera, camera setup and PC performance).
- Image resolution dynamically changes depending on the screen mode:VGA for Quad screen, QVGA for 16 split-screen, enabling optimum network usage (depending on the camera mode).

i-PRO Management Software

Extension Software

WV-ASM200 WV-ASE201 / ASE202 / ASE203 *Launches in April 2012



(System Controller WV-CU950 and monitor displays are optional.)

- Supports 16:9 video stream and 16:9 HD monitor. Displays 16:9 and 4:3 videos from IP cameras on the same screen.
- H.264 recording data in the SD/SDHC memory card can be downloaded.
- Convert file format from n3r (proprietary format) to MP4.
- Up to 100 recorders, 64 encoders and 256 directly connected cameras can be registered.
- Up to 6,400 cameras registered in the recorders and 256 cameras registered in the encoders are automatically registered in the WV-ASM200 (the number of the cameras depends on the recorder and encoder).
- Up to 16x 30 ips/camera images can be displayed in H.264 1.5 Mbps mode

Network Camera Recorder with Viewer Software

BB-HNP17



- H.264, MPEG-4 and JPEG recording
- Supports the recording and playback of H.264 cameras
- Supports resolutions of 1280 x 960
- Remote Access Function
- Up to 64 cameras Register
- Event Detection Recording
- Flexible Layout
- Preset Sequence
- Timer recording with preset designation
- Pop-up display
- Time specified color night view

i-PRO Management Software

Version 8 **WV-ASM100** (Limited Quantity)
Version 8 **WV-ASM100L** (Limited Quantity)



- Supported Recorders: WJ-ND400 Series, WJ-ND300 Series, WJ-ND200 Series, WJ-HD716/616, WJ-HD300A Series, WJ-RT416 Series
- Up to 100 recorders, 64 encoders and 256 directly connected cameras can be registered
- Up to 6,400 cameras registered in the recorders and 256 cameras registered in the encoders are automatically registered

System Components

IP Matrix Server Software **WV-ASC970**



(The picture above is only for image.)

IP Matrix Client Software **WV-ASM970**



(The picture above is only for image.)

Ethernet System Controller with 3D-Joystick & Jog/Shuttle **WV-CU950**



Optional Accessory

Ethernet System Controller with 3D-Joystick & Jog/Shuttle **WV-CU950** (WV-ASE201 is necessary.)



Dome Cameras

Super Dynamic 6
Weather Resistant Dome Camera

WV-CW590 Series 

WV-CW590 (220 V ~240 V AC: PAL)
WV-CW594 (24 V AC: NTSC, PAL)



- High resolution: 650 TV lines
- High sensitivity: 0.5 lx (Color), 0.04 lx (B/W) at F1.4 (Wide)
- **Super Dynamic 6** technology delivers 128x (NTSC) / 160x (PAL) wider dynamic range compared to conventional cameras.
- Standard auto tracking
- IP66 rated water and dust resistant
- 36x optical zoom lens with 20x digital zoom

Optional Accessory

Wall Mount Bracket
WV-Q122



Super Dynamic III
Weather Resistant Dome Camera

WV-CW960 Series 

WV-CW960 (220 V ~240 V AC: PAL)
WV-CW964 (24 V AC: NTSC, PAL)



- High sensitivity: 0.5 lx (Color), 0.04 lx (B/W) at F1.4 (Wide) / 0.016 lx (Color), 0.0013 lx (B/W) at F1.4 (Wide) with Sens Up 32x
- **Super Dynamic III** 128x (NTSC) / 160x (PAL) wider dynamic range
- Standard auto tracking
- IP66 rated water and dust resistant
- 30x optical zoom lens with 10x digital zoom

Optional Accessory

Wall Mount Bracket
WV-Q122



Super Dynamic III
Day/Night Dome Camera

WV-CS950 Series 

WV-CS950 (220 V ~240 V AC: PAL)
WV-CS954 (24 V AC: NTSC, PAL)



- High sensitivity: 0.5 lx (Color), 0.04 lx (B/W) at F1.4 (Wide)
- **Super Dynamic III** 128x (NTSC) / 160x (PAL) wider dynamic range
- Auto tracking capability
- 30x optical zoom lens with 10x digital zoom

Optional Accessories

Ceiling Mount Bracket WV-Q105	Embedded Ceiling Mount Bracket WV-Q116	Pendant Mount Bracket WV-Q117	Wall Mount Bracket WV-Q118A/ WV-Q118	Smoke Dome Cover WV-CS3S
---	--	---	--	------------------------------------

Super Dynamic III
Weather Resistant Dome Camera

WV-CW970 Series 

WV-CW970 (220 V ~240 V AC: PAL)
WV-CW974 (24 V AC: NTSC, PAL)



- High sensitivity: 0.5 lx (Color), 0.04 lx (B/W) at F1.4 (Wide) / 0.016 lx (Color), 0.0013 lx (B/W) at F1.4 (Wide) with Sens Up 32x
- **Super Dynamic III** 128x (NTSC) / 160x (PAL) wider dynamic range
- Advanced auto tracking
- IP66 rated water and dust resistant
- 30x optical zoom lens with 10x digital zoom

Optional Accessory

Wall Mount Bracket
WV-Q122



Super Dynamic 6
Day/Night Dome Camera

WV-CS580 Series 

WV-CS580 (220V~240V AC:PAL)
WV-CS584 (24V AC: NTSC,PAL)



- High resolution: 650 TV lines
- High sensitivity: 0.5 lx (Color), 0.04 lx (B/W) at F1.4 (Wide)
- **Super Dynamic 6** technology delivers 128x (NTSC) / 160x (PAL) wider dynamic range compared to conventional cameras.
- Standard auto tracking
- 36x optical zoom lens with 20x digital zoom

Optional Accessories

Ceiling Mount Bracket WV-Q105	Embedded Ceiling Mount Bracket WV-Q126	Pendant Mount Bracket WV-Q117	Wall Mount Bracket WV-Q118A/ WV-Q118	Smoke Dome Cover WV-CS4S
---	--	---	--	------------------------------------

Dome Camera

WV-CS570 Series 

WV-CS570 (220 V ~240 V AC: PAL)
WV-CS574 (24 V AC: NTSC, PAL)



- High resolution: 510 TV lines (Color, High)
- High sensitivity: 1.0 lx (Color) at F1.6 (Wide)
- 22x optical zoom lens with 10x digital zoom

Optional Accessories

Ceiling Mount Bracket WV-Q105 (for PAL only)	Embedded Ceiling Mount Bracket WV-Q106	Pendant Mount Bracket WV-Q117	Wall Mount Bracket WV-Q118A/ WV-Q118	Smoke Dome Cover WV-CS2S
---	--	---	--	------------------------------------

Fixed Dome Cameras

Super Dynamic 5
Vandal Resistant Fixed Dome Camera

WV-CW500 Series 

WV-CW500S (220 V ~240 V AC: PAL)
WV-CW504S (24 V AC or 12 V DC: NTSC, PAL)
WV-CW504F (24 V AC or 12 V DC: NTSC)



- High resolution: 650 TV lines typical(Color), 700 TV lines (B/W)
- High sensitivity: 0.1 lx (Color), 0.01 lx (B/W) at F1.4 (Wide) / 0.003 lx (Color), 0.0003 lx (B/W) at F1.4 (Wide) with Sens Up 32x
- **Super Dynamic 5** delivers Superior image by fusion of Super Dynamic, ABS (Adaptive Black Stretch) and i-VMD (intelligent-Video Motion Detection) intelligence technology

Optional Accessories

Mount Bracket for WV-CW504F WV-Q115	Heater Unit WV-CW5H	Embedded Ceiling Mount Bracket WV-Q169	Smoke Dome Cover WV-CW4S
---	-------------------------------	--	------------------------------------

Super Dynamic 5 Fixed Dome Camera

WV-CF504 

WV-CF504 (24 V AC or 12 V DC: NTSC, PAL)



- High resolution: 650 TV lines typical(Color), 700 TV lines (B/W)
- High sensitivity: 0.1 lx (Color), 0.01 lx (B/W) at F1.4 (Wide) / 0.003 lx (Color), 0.0003 lx (B/W) at F1.4 (Wide) with Sens Up 32x
- **Super Dynamic 5** delivers Superior image by fusion of Super Dynamic, ABS (Adaptive Black Stretch) and i-VMD (intelligent-Video Motion Detection) intelligence technology

Optional Accessories

Embedded Ceiling Mount Bracket WV-Q175	Smoke Dome Cover WV-CW4S
--	------------------------------------

Day/Night Fixed Dome Camera (for PAL only)

WV-CF334/CF364 

WV-CF334 (24 V AC or 12 V DC: PAL)
WV-CF364 (24 V AC or 12 V DC: PAL)



- High sensitivity: 0.6 lx (Color) 0.4 lx (B/W) at F1.3(Wide) (WV-CF334)
- High sensitivity: 0.6 lx (Color) 0.05 lx (B/W) at F1.3(Wide) (WV-CF364)
- 2.8 mm ~ 10 mm 3.6x Varifocal Auto Iris lens
- Adaptive Black Stretch enhances visibility of dark area

Optional Accessories

Embedded Ceiling Mount Bracket WV-Q168	Smoke Dome Cover WV-CF5S
--	------------------------------------

Day/Night Fixed Dome Camera

WV-CF284/CF294 

WV-CF284 (24 V AC or 12 V DC: NTSC, PAL)
WV-CF294 (24 V AC or 12 V DC: NTSC, PAL)



- High sensitivity: 0.9 lx (Color), 0.6 lx (B/W)
- WV-CF294: 3.6x (2.8 mm ~ 10 mm) varifocal lens built-in
- WV-CF284: 2x (2.8 mm ~ 6.0 mm) varifocal lens built-in
- Auto Back Focus (ABF) adjustment (WV-CF294 only)
- Adaptive Black Stretch

Optional Accessories

Embedded Ceiling Mount Bracket WV-Q168	Smoke Dome Cover WV-CF5S
--	------------------------------------

Vandal Resistant Fixed Dome Camera

WV-CW334/CW364 

WV-CW334S (24 V AC or 12 V DC: NTSC, PAL)
WV-CW364S (24 V AC or 12 V DC: NTSC, PAL)



- High sensitivity: 0.6 lx (Color) 0.4 lx (B/W) at F1.3(Wide) (WV-CW334)
- High sensitivity: 0.6 lx (Color) 0.05 lx (B/W) at F1.3(Wide) (WV-CW364)
- 2.8 mm ~ 10 mm 3.6x Varifocal Auto Iris lens
- Adaptive Black Stretch enhances visibility of dark area
- IP66 rated water and dust resistant

Optional Accessories

Heater Unit WV-CW5H	Embedded Ceiling Mount Bracket WV-Q169	Smoke Dome Cover WV-CW4S
-------------------------------	--	------------------------------------

Day/Night Fixed Dome Camera

WV-CF344/CF354/CF374 

WV-CF344 (24V AC or 12V DC:NTSC,PAL)
WV-CF354 (24V AC or 12V DC:NTSC,PAL)
WV-CF374 (24V AC or 12V DC:PAL)



- High resolution: 650 TV lines
- High sensitivity with Day/Night function: 0.08 lx (Color), 0.008 lx (B/W) at F1.4. IR cut filter switches on/off to enhance the sensitivity in B/W mode. (WV-CF374)
- High sensitivity with Day/Night (electrical) function: 0.08 lx (Color), 0.05 lx (B/W) at F1.4 (WV-CF344/WV-CF354)

Optional Accessory

Embedded Ceiling Mount Bracket (Sail white) WV-Q174

Day/Night Fixed Dome Camera

WV-CF324 

(24 V AC or 12 V DC: NTSC, PAL)



- High sensitivity: 0.9 lx (Color), 0.6 lx (B/W) at F1.3 (Wide)
- 3.6x (2.8 mm ~ 10 mm) varifocal lens built-in
- Auto Back Focus (ABF) adjustment
- Adaptive Black Stretch enhances the visibility of dark area
- Metal body and polycarbonate dome cover

Optional Accessory

Smoke Dome Cover WV-NF5S

Day/Night Mini Fixed Dome Camera (for PAL only)

WV-CF102 

(12 V DC: PAL)



- High resolution: 540 TV lines
- High sensitivity: 1.2 lx (Color), 0.9 lx (B/W) at F2.0
- 108 mm in diameter compact design
- 2.5 mm fixed focal lens
- Adaptive Black Stretch enhances the visibility of dark area

Optional Accessory

Smoke Dome Cover WV-CF5S

Fixed Cameras

Super Dynamic 5
Day/Night Camera
WV-CP500 Series

WV-CP500 (120V AC: NTSC, 220 V -240 V AC: PAL)
WV-CP504 (24 V AC or 12 V DC: NTSC, PAL)

WV-CP504
WV-CP504L



Lens: optional

WV-CP500L Series

WV-CP500L (220 V -240 V AC: PAL)
WV-CP504L (24 V AC or 12 V DC: PAL)



Lens: optional

WV-CP500
WV-CP500L



(WV-CP500L Series) * WV-CP500 Series only

- High resolution: 650 TV lines typical (Color), 700 TV lines (B/W) (WV-CP500 Series)
- High resolution: 650 TV lines typical (WV-CP500L Series)
- High sensitivity: 0.1 lx (Color), 0.01 lx (B/W) at F1.4 / 0.003 lx (Color), 0.0003lx (B/W) at F1.4 with Sens Up 32x (WV-CP500 Series)
- High sensitivity: 0.1 lx (Color), 0.07 lx (B/W) at F1.4 / 0.003 lx (Color), 0.002lx (B/W) at F1.4 with Sens Up 32x (WV-CP500L Series)
- **Super Dynamic 5** delivers superior image by fusion of Super Dynamic, ABS (Adaptive Black Stretch) and i-VMD* (intelligent-Video Motion Detection) intelligence technology

Super Dynamic III
Weather Resistant Day/Night Camera
WV-CW380 Series

WV-CW380 (220 V -240 V AC: PAL)
WV-CW384 (24 V AC or 12 V DC: NTSC, PAL)



- High sensitivity: 0.65 lx (Color), 0.09 lx (B/W) at F1.6 / 0.065 lx (Color), 0.009 lx (B/W) at F1.6 with Sens Up 10x
- **Super Dynamic III** 128x (NTSC) / 160x (PAL) wider dynamic range
- ABF (Auto Back Focus) adjustment
- IP66 rated water and dust resistant
- Built-in heater function for varying temperature
- 5.0 mm ~ 40 mm, 8x varifocal lens with 2x digital zoom

Day/Night Camera
WV-CP300 Series

WV-CP300 (120V AC: NTSC, 220~240V AC: PAL)
WV-CP304 (24V AC or 12V DC: NTSC, PAL)
WV-CP310 (120V AC: NTSC, 220~240V AC: PAL)
WV-CP314 (24V AC or 12V DC: NTSC, PAL)



Lens: optional



Lens: optional



(WV-CP310/WV-CP314) (WV-CP300/WV-CP304)

- High resolution: 650 TV lines
- High sensitivity with Day/Night function: 0.08 lx (Color), 0.008 lx (B/W) at F1.4. IR cut filter switches on/off to enhance the sensitivity in B/W mode. (WV-CP310/WV-CP314)
- High sensitivity with Day/Night (electrical) function: 0.08 lx (Color), 0.05 lx (B/W) at F1.4 (WV-CP300/WV-CP304)

Optional Accessory



1/3 type 2x Varifocal Lens
WV-LZA61/2S
(3.8 ~ 8 mm)
F1.4 (Wide)
F1.8 (Tele)

High Sensitive Day/Night Camera
WV-CL930 Series

WV-CL930 (120 V AC: NTSC, 220 V -240V AC: PAL)
WV-CL934 (24 V AC or 12 V DC: NTSC, PAL)
WV-CLR930 (220 V -240 V AC with RS-485 control IF: PAL)
WV-CLR934 (24 V AC or 12 V DC with RS-485 control IF: PAL)



Lens: optional



- 1/2 type interline transfer CCD
- Ultra high sensitivity: 0.09 lx (Color), 0.008 lx (B/W) at F1.4 / 0.003 lx (Color), 0.0003 lx (B/W) at F1.4 with Sens Up 32x
- ABF (Auto Back Focus) adjustment
- Built-in VMD (Video Motion Detector)

Day/Night Camera
WV-CP280 Series

WV-CP280 (120 V AC: NTSC, 220 V -240V AC: PAL)
WV-CP284 (24 V AC or 12 V DC: NTSC, PAL)



Lens: optional



- High resolution: 540 TV lines (Color)
- High sensitivity: 0.6 lx (Color), 0.4 lx (B/W) at F1.2
- ABS (Adaptive Black Stretch) feature transforms shadows and dark areas into natural and crisp images in real time

Super Dynamic 6
Day/Night Surveillance Camera (for PAL only)

WV-CZ492 SR

(12V DC:PAL)

Day/Night Surveillance Camera (for PAL only)
WV-CZ392 SR

(12V DC:PAL)



- High resolution: 650 TV lines
- High sensitivity with Day/Night function: 0.5 lx at color mode (Sens Up: Off, AGC: High) 0.04 lx at B/W mode (Sens Up: Off, AGC: High)
- **Super Dynamic 6** technology delivers 160x wider dynamic range compared to conventional cameras. (WV-CZ492)
- 36x Optical Zoom Lens

Day/Night Camera (for PAL only)

WV-CZ362

(12 V DC: PAL)

(Limited Quantity)



- High resolution: 510 TV lines (Color, High) and 570 TV lines (B/W)
- High sensitivity: 0.6 lx (Color), 0.04 lx (B/W)
- 22x optical zoom lens with 10x digital zoom

Digital Video Recorders

16ch Real-time H.264 Digital Disk Recorder

WJ-HD716 (120 V AC: NTSC, 220 V -240 V AC: PAL)

16ch H.264 Digital Disk Recorder

WJ-HD616 (120 V AC: NTSC, 220 V -240 V AC: PAL)



WJ-HD716

- Dual HDMI Full HD 1080i (1,920 x 1,080) display
- H.264 (High Profile) codec reduces bandwidth by up to 40 % compared with MPEG-4
- **SD5Link** (Super Dynamic 5 Link) with i-VMD (intelligent-Video Motion Detection) alarm
- Real-time recording (WJ-HD716) and 16ch 2x monitors real-time live
- Up to 31 HDD slots with 4 HDD slots in the main unit and three WJ-HDE400 optional Extension Units each with 9 HDD slots

Optional Accessories

HDD Cassister WJ-HDU40K	Hard Disk Extension Unit WJ-HDE400
RAID Board WJ-HDB601	
Built-in DVD Drive WJ-HDB611	

8ch Real-time H.264 Digital Disk Recorder (for PAL only)

WJ-HL208 (100 V -240 V AC: PAL)

4ch Real-time H.264 Digital Disk Recorder (for PAL only)

WJ-HL204 (100 V -240 V AC: PAL)



WJ-HL208

- H.264 codec for efficient digital video recording
- Real time recording @ CIF resolution
WJ-HL208: 200 ips
WJ-HL204: 100 ips
- 4 recording qualities and 3 recording resolution
- Easy Operation with user-friendly GUI (Graphical User Interface) and Mouse
- Equipped with 3 HDD slots

System Controllers

Ethernet System Controller with 3D-Joystick & Jog/Shuttle

WV-CU950



- For smooth operation of Ethernet/PS-Data interfaced devices, WV-ASM100/WV-ASC970 and System650EX/System650/System150 (WJ-SX150A version 2.0 or higher)
- Integrated system control: camera, recorder and switcher
- User level management and user assignable buttons
- Universal design for Right or Left handed

RS-485 System Controller with 3D-Joystick & Jog/Shuttle

WV-CU650



- For smooth operation of PS-Data interfaced devices, and System650/System150 (WJ-SX150A version 2.0 or higher)
- Integrated system control: camera, recorder and switcher
- User level management and user assignable buttons
- Universal design for Right or Left handed

Matrix Switching System

512 Inputs Matrix Switching System

System650EX with WV-ASC970



(The picture above is only for image.)

- Up to 512 inputs and 64 outputs
- Simultaneous use of up to 64 WV-CU950 Ethernet System Controllers
- Up to 512 users
- Up to 32 recorders (WJ-HD716/WJ-HD616, WJ-HD300A Series, WJ-RT416 Series)
- Up to 64 Satellite domains

256 Inputs Matrix Switching System

System650



- Up to 256 inputs and 32 outputs
- Simultaneous use of up to 16 WV-CU650 RS-485 System Controllers
- Up to 60 users
- Up to 16 recorders (WJ-HD716/WJ-HD616, WJ-HD300A Series, WJ-RT416 Series)

System650EX/System650 System Components

Matrix Switcher WJ-SX650	Card Cage WJ-SX650U	Video Input Board WJ-PB65C32 (32 inputs)	Video Output Board WJ-PB65M16 (16 outputs)	Network Board WJ-PB65E01 (for System650EX only)	D-sub/BNC Video Cable WJ-CA68 (0.5 m)
Expansion Cable Kit WJ-CA65L20K (2 m) WJ-CA65L07K (0.7 m)	RS-485 System Controller with 3D-Joystick & Jog/Shuttle WV-CU650 (for System650 only)	Ethernet System Controller with 3D-Joystick & Jog/Shuttle WV-CU950	IP Matrix Server Software WV-ASC970 (Version 5) (for System650EX only)	IP Matrix Client Software WV-ASM970 (Version 4)	
					(The picture above is only for image.)

Lenses

1/3 type Variable Focal Lenses	2x Variable WV-LZA62/2 (Limited Quantity) 2.8 mm ~ 6 mm F1.4 (wide) F2.1 (tele)	2x Variable WV-LZA61/2S 3.8 mm ~ 8 mm F1.4 (wide) F1.8 (tele)	8x Variable WV-LZ62/8S 5 mm ~ 40 mm F1.6 (wide) F1.9 (tele)
Focal Length	2.8 mm ~ 6 mm	3.8 mm ~ 8 mm	5 mm ~ 40 mm
Iris Type	Automatic	Automatic	Automatic
Optical Filter Size	None	M30.5 mm, P = 0.5 mm	None
Mount	Special C-Mount	Special C-Mount, (CS-Mount, 1-32UN)	Special C-Mount, (CS-Mount, 1-32UN)
Dimensions (W x H x D)	64 mm x 60 mm x 60.9 mm	60.5 mm x 53 mm x 45.3 mm	61 mm x 52 mm x 65 mm

Cameras / Lenses Combination Chart

Type of Lens	Model No.	Focal Length	1/3 type CCD Cameras			1/2 type CCD Camera
			WV-SP509 / WV-SP508 / WV-SP306 / WV-SP305 / WV-SP302 / WV-NP502	WV-CP280	WV-CP300 / WV-CP290 / WV-CP294 / WV-CP500 / WV-CP500L	WV-CL930
1/3 type ALC Variable Focal	WV-LZA62/2	2.8 mm ~ 6 mm	YES	Possible	YES	NO
	WV-LZA61/2S	3.8 mm ~ 8 mm	NO	YES	YES	NO
	WV-LZ62/8S	5 mm ~ 40 mm	NO	YES	YES	NO

Lens Selection Chart

The examples displayed below are monitor images captured with 1/3 type cameras, illustrating the relationship between lens focal length and the capture image. Use these images to select the type of lens best suited to your application.

Lens and Focal Length		Distance between Camera and Subject				
		2 m	4 m	6 m	8 m	10 m
2x Variable Focal WV-LZA61/2S (3.8 mm ~ 8 mm)	3.8 mm (Wide)	Ratio 84% 2.5(W) m x 1.9(H) m	Ratio 42% 5.1(W) m x 3.8(H) m	Ratio 28% 7.6(W) m x 5.7(H) m	Ratio 21% 10.1(W) m x 7.6(H) m	Ratio 17% 12.6(W) m x 9.5(H) m
	8 mm (Standard)	Ratio 178% 1.2(W) m x 0.9(H) m	Ratio 89% 2.4(W) m x 1.8(H) m	Ratio 59% 3.6(W) m x 2.7(H) m	Ratio 44% 4.8(W) m x 3.6(H) m	Ratio 36% 6.0(W) m x 4.5(H) m
8x Variable Focal WV-LZ62/8S (5 mm ~ 40 mm)	5 mm (Wide)	Ratio 111% 1.9(W) m x 1.4(H) m	Ratio 56% 3.8(W) m x 2.9(H) m	Ratio 37% 5.8(W) m x 4.3(H) m	Ratio 28% 7.7(W) m x 5.8(H) m	Ratio 22% 9.6(W) m x 7.2(H) m
	40 mm (Tele)	Ratio 889% 0.24(W) m x 0.18(H) m	Ratio 444% 0.48(W) m x 0.36(H) m	Ratio 296% 0.72(W) m x 0.54(H) m	Ratio 222% 0.96(W) m x 0.72(H) m	Ratio 178% 1.2(W) m x 0.9(H) m
2x Variable Focal WV-LZA62/2 (2.8 mm ~ 6 mm)	2.8 mm (Super Wide)	Ratio 62% 3.4(W) m x 2.6(H) m	Ratio 31% 6.9(W) m x 5.1(H) m	Ratio 21% 10.3(W) m x 7.7(H) m	Ratio 16% 13.7(W) m x 10.3(H) m	Ratio 12% 17.1(W) m x 12.9(H) m
	6 mm (Wide)	Ratio 133% 1.6(W) m x 1.2(H) m	Ratio 67% 3.2(W) m x 2.4(H) m	Ratio 44% 4.8(W) m x 3.6(H) m	Ratio 33% 6.4(W) m x 4.8(H) m	Ratio 27% 8.0(W) m x 6.0(H) m

*Because of monitor over scan, actual images seen may differ slightly from those shown here.

**"Capture image" is the area included in the image by the camera. "Ratio" determines the proportion of this area occupied by the subject in the image that appears on the monitor (Height). If the subject fills the whole screen with the ratio set at 100%, reducing the ratio to 50% will make the subject only half as large.

*When the distance from the camera to the subject is 10 m or more, set both distance to subject and lens focal length to 10x.

INDEX

		page			page
BB			WV-CW380 Series	Super Dynamic III Weather Resistant Day/Night Camera	16
BB-HCA10	Ceiling Flush Mount Bracket	7	WV-CW500 Series	Super Dynamic 5 Vandal Resistant Fixed Dome Camera	15
BB-HCA11	Ceiling Flush Mount Bracket	7	WV-CW590 Series	Super Dynamic 6 Weather Resistant Dome Camera	14
BB-HCA3	AC adaptor	7 · 9	WV-CW960 Series	Super Dynamic III Weather Resistant Dome Camera	14
BB-HCA7	AC adaptor	7 · 9	WV-CW970 Series	Super Dynamic III Weather Resistant Dome Camera	14
BB-HCM511	Network Camera	9	WV-CZ362	Day/Night Camera	16
BB-HCM527	Dome Network Camera	7	WV-CZ392	Day/Night Surveillance Camera	16
BB-HCM531	Network Camera	9	WV-CZ492	Super Dynamic 6 Day/Night Surveillance Camera	16
BB-HCM547	Dome Network Camera	7	WV-L		
BB-HCM580	Dome Network Camera	4	WV-LZ62/8S	1/3 type 8x Varifocal Lens	18
BB-HCM581	Dome Network Camera	4	WV-LZA61/2S	1/3 type 2x Varifocal Lens	18
BB-HCM701	Fixed Dome Network Camera	7	WV-LZA62/2	1/3 type High Resolution 2x Varifocal Lens	8 · 18
BB-HCM705	Fixed Dome Network Camera	7	WV-N		
BB-HCM715	Network Camera	9	WV-NF5S	Smoke Dome Cover	15
BB-HCM735	Network Camera	9	WV-NP502	Super Dynamic HD Network Camera	8
BB-HNP17	Network Camera Recorder with Viewer Software	13	WV-NS202A	Super Dynamic III Day/Night Dome Network Camera	4
BL			WV-NS950 Series	Super Dynamic III Day/Night Dome Network Camera	4
BL-C101	Network Camera	10	WV-NW484S	Super Dynamic III Vandal Resistant Dome Network Camera	7
BL-C111	Network Camera	10	WV-NW502S	Super Dynamic HD Vandal Resistant Dome Network Camera	7
BL-C121	Network Camera	10	WV-NW960 Series	Super Dynamic III Weather Resistant Dome Network Camera	3
BL-C131	Network Camera	10	WV-Q		
BL-C140	Network Camera	10	WV-Q105	Ceiling Mount Bracket	3 · 4 · 5 · 6 · 14
BL-C160	Network Camera	10	WV-Q106	Embedded Ceiling Mount Bracket	14
BL-C210	Network Camera	10	WV-Q115	Mount Bracket for WV-CW504F	15
BL-C230	Network Camera	10	WV-Q116	Embedded Ceiling Mount Bracket	4 · 14
BL-VT164	Pan-tilt Network Camera	10	WV-Q117	Pendant Mount Bracket	4 · 14
BL-VT164W	Pan-tilt Wireless Network Camera	10	WV-Q118	Wall Mount Bracket	4 · 14
BY			WV-Q118A	Wall Mount Bracket	3 · 4 · 14
BY-HPE11KT	Coaxial-LAN Converter	12	WV-Q120	Adapter Box	7
BY-HCA10	Rack Mount Connecting Fitting	12	WV-Q122	Wall Mount Bracket	3 · 14
WJ			WV-Q126	Embedded Ceiling Mount Bracket	3 · 14
WJ-CA65L20K/L07K	Expansion Cable Kit (System650)	17	WV-Q150C	Wall Mount Bracket (Clear)	4
WJ-CA68	D-sub/BNC Video Cable (System650)	17	WV-Q150S	Wall Mount Bracket (Smoke)	4
WJ-GXD400	Multi Channel High Definition Video Decoder	12	WV-Q151C	Embedded Ceiling Mount Bracket (Clear)	4
WJ-GXE500	4 CH H.264 Video Encoder	12	WV-Q151S	Embedded Ceiling Mount Bracket (Smoke)	4
WJ-HD616	16ch H.264 Digital Disk Recorder	17	WV-Q152C	Indoor Dome Cover (Clear)	4
WJ-HD716	16ch Real-time H.264 Digital Disk Recorder	17	WV-Q152S	Indoor Dome Cover (Smoke)	4
WJ-HDB601	RAID Board (WJ-HD616/HD716)	17	WV-Q153	Inner Dome Cover	4
WJ-HDB611	Built-in DVD Drive (WJ-HD616/HD716)	17	WV-Q154C	Wall Mount Brackets (Clear)	3
WJ-HDE300	Hard Disk Extension Unit	11	WV-Q154S	Wall Mount Brackets (Smoke)	3
WJ-HDE400	Hard Disk Extension Unit	11 · 17	WV-Q155C	Embedded Ceiling Mount Brackets (Clear)	3
WJ-HDU40K	HDD Canister	17	WV-Q155S	Embedded Ceiling Mount Brackets (Smoke)	3
WJ-HL204	4ch Real-time H.264 Digital Disk Recorder	17	WV-Q156C	Indoor Dome Covers (Clear)	3
WJ-HL208	8ch Real-time H.264 Digital Disk Recorder	17	WV-Q156S	Indoor Dome Covers (Smoke)	3
WJ-ND300A	Network Disk Recorder	11	WV-Q157	Inner Dome Cover	3
WJ-ND400	Network Disk Recorder	11	WV-Q168	Embedded Ceiling Mount Bracket(AV-light gray)	6 · 15
WJ-NDB301	RAID5 Board for WJ-ND300A	11	WV-Q169	Embedded Ceiling Mount Bracket	4 · 7 · 15
WJ-NV200	Network Disk Recorder	11	WV-Q174	Embedded Ceiling Mount Bracket (Sail white)	6 · 15
WJ-NV200V	Network Disk Recorder with DVD drive	11	WV-Q175	Embedded Ceiling Mount Bracket	15
WJ-NVF20	Additional Business Intelligence Kit	11	WV-Q204/1S	Rack Mount Bracket	12
WJ-PB65C32	Video Input Board (System650)	17	WV-Q204/2S	Rack Mount Bracket	12
WJ-PB65E01	Network Board (System650EX only)	17	WV-S		
WJ-PB65M16	Video Output Board (System650)	17	WV-SC384	HD Dome Network Camera	3
WJ-SX650	Matrix Switcher	17	WV-SC385	Super Dynamic HD Dome Network Camera	3
WJ-SX650U	Card Cage	17	WV-SC386	Super Dynamic HD Dome Network Camera	3
WV-A			WV-SF132	Dome Network Camera	6
WV-ASC970	IP Matrix Server Software	13 · 17	WV-SF135	HD Dome Network Camera	6
WV-ASE201/ASE202/ASE203	i-PRO Management Extension Software	13	WV-SF332	Dome Network Camera	6
WV-ASM100	i-PRO Management Software	13	WV-SF335	HD Dome Network Camera	6
WV-ASM100L	i-PRO Management Software	13	WV-SF336	HD Dome Network Camera	6
WV-ASM200	i-PRO Management Software	13	WV-SF342	Vandal Resistant Dome Network Camera	5
WV-ASM970	IP Matrix Client Software	13 · 17	WV-SF346	HD Vandal Resistant Dome Network Camera	5
WV-C			WV-SF538	Super Dynamic Full HD Dome Network Camera	6
WV-CF5S	Smoke Dome Cover	6 · 15	WV-SF539	Super Dynamic Full HD Dome Network Camera	6
WV-CF102	Day/Night Mini Fixed Dome Camera	15	WV-SF548	Super Dynamic Full HD Vandal Resistant Dome Network Camera	5
WV-CF284/CF294	Day/Night Fixed Dome Camera	15	WV-SF549	Super Dynamic Full HD Vandal Resistant Dome Network Camera	5
WV-CF324	Day/Night Fixed Dome Camera	15	WV-SP102	Network Camera	8
WV-CF334/CF364	Day/Night Fixed Dome Camera	15	WV-SP105	HD Network Camera	8
WV-CF300 Series	Day/Night Fixed Dome Camera	15	WV-SP302	Network Camera	8
WV-CF504	Super Dynamic 5 Fixed Dome Camera	15	WV-SP305	HD Network Camera	8
WV-CL930 Series	High Sensitive Day/Night Camera	16	WV-SP306	HD Network Camera	8
WV-CP280 Series	Day/Night Camera	16	WV-SP508	Super Dynamic Full HD Network Camera	8
WV-CP290 Series	Day/Night Camera	16	WV-SP509	Super Dynamic Full HD Network Camera	8
WV-CP300 Series	Day/Night Fixed Dome Camera	16	WV-ST162	Pan-tilt Network Camera	9
WV-CP500 Series	Super Dynamic 5 Day/Night Camera	16	WV-ST165	Pan-tilt Network Camera	9
WV-CP500L Series	Super Dynamic 5 Day/Night Camera	16	WV-SW152/SW152M	Super Dynamic HD Vandal Resistant Dome Network Camera	5
WV-CS2S	Smoke Dome Cover	14	WV-SW155/SW155M	Super Dynamic HD Vandal Resistant Dome Network Camera	5
WV-CS3S	Smoke Dome Cover	4 · 14	WV-SW172	Outdoor Pan-tilt Network Camera	9
WV-CS4S	Smoke Dome Cover	3 · 14	WV-SW174W	Outdoor Pan-tilt Wireless Network Camera	9
WV-CS570 Series	Dome Camera	14	WV-SW175	Outdoor Pan-tilt Network Camera	9
WV-CS580 Series	Super Dynamic 6 Day/Night Dome Camera	14	WV-SW314	Super Dynamic Weather Resistant HD Network Camera	7
WV-CS950 Series	Super Dynamic III Day/Night Dome Camera	14	WV-SW316	Super Dynamic Weather Resistant HD Network Camera	7
WV-CU650	RS-485 System Controller with 3D-Joystick & Jog/Shuttle	17	WV-SW316L	Super Dynamic Weather Resistant HD Network Camera	7
WV-CU950	Ethernet System Controller with 3D-Joystick & Jog/Shuttle	13 · 17	WV-SW352	Super Dynamic Vandal Resistant Dome Network Camera	4
WV-CW334/CW364	Vandal Resistant Fixed Dome Camera	15	WV-SW355	Super Dynamic HD Vandal Resistant Dome Network Camera	4
WV-CW4C	Clear Dome Cover	7	WV-SW395	Super Dynamic Weather Resistant HD Dome Network Camera	3
WV-CW4H	Heater Unit	6	WV-SW396	Super Dynamic Weather Resistant HD Dome Network Camera	3
WV-CW4S	Smoke Dome Cover	4 · 7 · 15	WV-SW3H	Smoke Dome Cover	4
WV-CW5H	Heater Unit	15	WV-SW558	Super Dynamic Full HD Vandal Resistant Dome Network Camera	4
WV-CW6S	Smoke Dome Cover	5 · 6	WV-SW559	Super Dynamic Full HD Vandal Resistant Dome Network Camera	4