



YD25L

YD25

A range of electronic deadbolts, with Streamlined, Key Override, High Security and Magnetic Latching solutions. Integrated access control, monitoring and a holding force of 1000kg as standard.

Door Lock

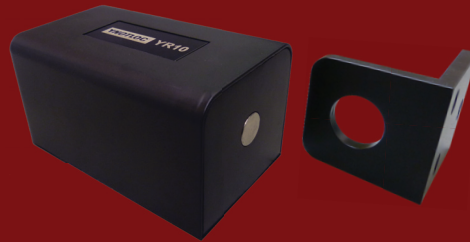


YD25K

YD38

The YG10 is weather resistant whilst still offering all the same intelligent features and high physical strength found in the YR10.

Gate Lock



YR10

A unique lock where physical strength is combined with integrated access control functions. Able to withstand 2000kg, offers complete monitoring, auto re-locking and multiple locking / unlocking attempts.

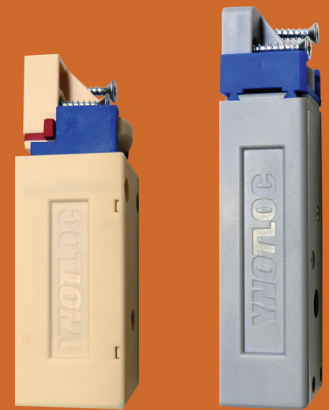
Roller Lock



YG10

Simple to install, simple to use, the YC10 is the ideal option for commercial or domestic cabinet locking. Vehicle cabinets however require the YC20 with its unique toggling operation.

Cabinet Lock



YC10

YC20

For more information on the products shown including detailed features, specifications and case studies, please visit our website: www.ynotloc.com

SAFETY • SECURITY • PEACE OF MIND
Unique, Electromechanical Locking Systems

YNOTLOC™

Corporate Office

Mediapolis
 71 Ayer Rajah Crescent, #03-03
 Singapore 139951
 Phone: +65 62207970
 Fax: +65 62207656

R&D Centre

Unit E, 8 Piermark Drive
 Albany, Auckland 0632
 New Zealand
 Phone: +64 9 4473145
 Fax: +64 9 4473146

Factory

Johnson Controls Building
 10 Upper Aljunied Link, #03-09
 Singapore 367904
 Phone: +65 68586166
 Fax: +65 68586066