

YNOTLOC™

YR10

ELECTRONIC ROLLER DOOR LOCK

Strong, secure and convenient are vital qualities of any lock. To date, roller door locks have failed to achieve the right balance of these features so compromises had to be made, but no longer. Introducing the YR10, a unique lock that marries the features found in traditional electronic locks, with the physical strength and function required to secure roller doors of any shape and size.

High Security

- Automatic deadbolting
- 20,000N holding force (2,000kg)
- 18mm diameter stainless steel bolt pin
- Keyed manual override

Integrated Access Control

- Anti-tamper and Auto-relock
- Timed re-lock after 1 minute
- Multiple attempts to lock and unlock

Complete Monitoring

- Door position switch
- Bolt locked and bolt unlocked monitor

Varied Voltage Input

- Input voltage from 12VDC – 24VDC

Versatile Installation

- Internal or external, floor or wall installation

Security System Compatible

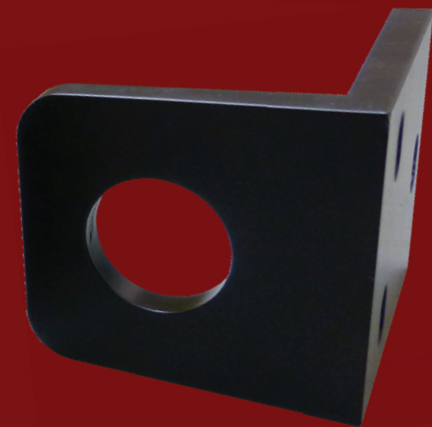
- Integrate with access control and alarm systems

Dimensions

- 152mmL x 89mmW x 77mmD

Approvals

- Cycle tested to 1000000 operations
- Patent Pending: 587334



PRODUCT New

Corporate Office

SGX Centre 2
4 Shenton Way, #14-02
Singapore 068807
Phone: +65 62207970
Fax: +65 62207656

R&D Centre

Unit E, 8 Piermark Drive
Albany, Auckland 0632
New Zealand
Phone: +64 9 4473145
Fax: +64 9 4473146

Factory

Johnson Controls Building
10 Upper Aljunied Link, #03-09
Singapore 367904
Phone: +65 68586166
Fax: +65 68586066

DEALER DETAILS: