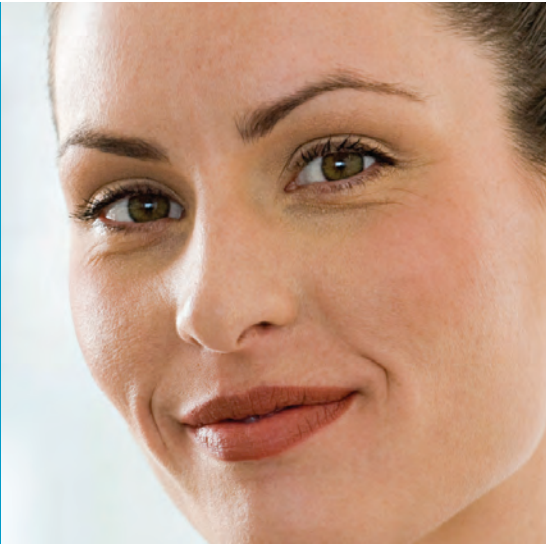


Ricoh Aficio SP C320DN
Color Laser Printer
Print Faster, Spend Less

RICOH

smart



color



economical



Ricoh Aficio SP C320DN Color Laser Printer

Robust capabilities, impressive results.

Businesses face new pressures today. To compete, you need to move faster, deliver more and spend less. The RICOH® Aficio® SP C320DN Color Laser Printer addresses these challenges and helps you succeed. This ultra-quick printer offers an Economy Color Mode that lets you choose when to print draft- or review-quality documents and when to print presentation-quality documents. This breakthrough capability fits perfectly with a Managed Print strategy that can help you monitor, control and improve output. Other new capabilities—including an ECO Night Sensor that automatically powers down the printer after-hours and robust security features that safeguard documents and data—deliver entirely new and sustainable cost savings.



The versatile Ricoh Aficio SP C320DN delivers vibrant presentation-color, draft-color and black-and-white printing.

ColorSpeedIntelligenceSecurity

Flexible Printing, Lower Consumable Costs

Drive measurable savings by choosing when to print draft- or review-quality color and when to print presentation-quality color.

- Optimize color toner use with a new Economy Color Mode that applies less toner for draft prints and presentation color for final documents.
- Select the right supplies for your workflow with a choice of conventional or high-yield cartridges which add to your cost-per-page savings.
- Print high-quality presentations, proposals and other documents in brilliant color with resolutions up to 1,200 dpi.
- Produce full-color photos without connecting to a PC or installing software. Just plug a PictBridge-enabled digital still camera directly into the printer.

Superior Results, Streamlined Workflow

The Ricoh Aficio SP C320DN is built for speed and easily handles the escalating demands of today's fast-moving business environment.

- Push productivity to a new level with a powerful 533 MHz controller and quick 26 pages-per-minute print speed—whether you are printing draft color, presentation color or black-and-white.
- Handle large files without disrupting your workflow. The Ricoh Aficio SP C320DN offers expansive memory up to 768 MB.
- Keep projects moving fast, even with oversized documents. Print up to 8.5" x 14" through the Standard Tray or use the Bypass Tray for thicker stocks (up to 120 lb. index) and banner printing (up to 8.5" x 49.6").
- Spend less time replenishing paper with a 500-sheet Standard Paper Tray—expandable up to 1,100 sheet total paper capacity.

Inspired Technologies, Minimal Environmental Impact

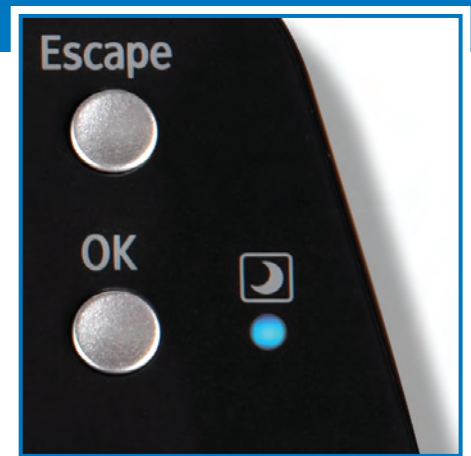
New ecologically driven features make the Ricoh Aficio SP C320DN an ideal fit for organizations looking to minimize environmental effects and reduce paper, toner and energy usage.

- Ensure efficient energy use with the new ECO Night Sensor that powers down when office lights have been off for an amount of time designated by the user.
- Save energy and time waiting for documents with less than 20 seconds warm-up time and less than 13.5 seconds first-print speed.
- Reduce paper usage and costs with standard automatic duplex printing—a great solution for printing multi-page reports, plans, white papers or training documentation.
- Minimize toner usage with the new Economy Color Mode that lets you be selective about applying color to documents.

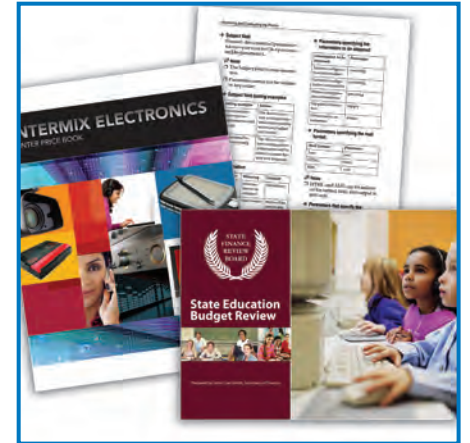
Serious Protection for Documents and Data

We know you want to protect your data. The Ricoh Aficio SP C320DN offers multi-layered security features to protect both print and electronic documents.

- Ensure that only authorized users have access to the Ricoh Aficio SP C320DN and the data stored within the printer with User Authentication.
- Prevent the interception of unprotected data streams with built-in network encryption capabilities.
- Configure the Ricoh Aficio SP C320DN with an optional hard disk drive and DataOverwriteSecurity System (DOSS), which automatically removes data from the hard disk drive after each job is completed.



With the innovative ECO Night Sensor, the Ricoh Aficio SP C320DN automatically powers down after the office lights have been off for a preset amount of time.



Meet all of your black-and-white and color document needs with the Ricoh Aficio SP C320DN. The Standard Paper Tray prints up to 8.5" x 14" and the Bypass Tray accepts paper weights up to 120 lb. index and can print banners up to 8.5" x 49.6".

The Total Green Office Solution



Ricoh continues its long-standing commitment to developing office solutions with environmentally friendly and superior energy- and supply-saving features, without compromising productivity.

Ricoh Aficio SP C320DN

System Specifications

System Specifications

Main Unit Configuration Technology	SP C320DN – Part # 406790 Desktop Laser beam scanning, color laser electrophotographic printing with monocomponent toner development, 4-drum tandem method
Resolution	600 x 600 dpi (1 bit) (Default), 600 x 600 dpi (2 bit), 1200 x 1200 dpi (1 bit)
Printing Speed	B/W: 26 ppm (Letter), FC: 26 ppm (Letter)
First Print Speed	13.5 sec. or less (Full-color and Monochrome)
Auto Duplex	Standard
Standard Paper Capacity	500 sheets
Bypass Tray	100 sheets
Optional Paper Capacity	500 sheets (one Paper Feed Unit may be added)
Maximum Paper Capacity	Up to 1,100 sheets
Output Capacity	150 sheets (face down)
Acceptable Paper Sizes	Standard Paper Tray: Letter (8.5" x 11"), Legal (8.5" x 14"), Executive (7.25" x 10.5"), Foolscap (8.5" x 13"), Folio (8.25" x 13"), F (8" x 13"), A4 (210 x 297 mm), A5 (148 x 210 mm), B5 (148 x 257 mm) Custom Size Range: Width: 5.8" – 8.5" (148 – 216 mm), Length: 8.3" – 14" (210 – 356 mm) Bypass Tray: Letter (8.5" x 11"), Legal (8.5" x 14"), Executive (7.25" x 10.5"), Half Letter (5.5" x 8.5"), Foolscap (8.5" x 13"), Folio (8.25" x 13"), F (8" x 13"), A4 (210 x 297 mm), A5 (148 x 210 mm), A6 (105 x 148 mm), B5 (148 x 257 mm), B6 (128 x 182 mm) Envelopes: Com10/Monarch/C6/C5/DL Custom Size Range: Width: 2.5" – 8.5" (64 – 216 mm), Length: 4.9" – 49.6" (125 – 1260 mm) Optional PFU: Letter (8.5" x 11"), A4 (210 x 297 mm)
Acceptable Paper Weights	Standard Tray: 16 – 43 lb. Bond/90 lb. Index (60 – 163 g/m ²) Bypass Tray: 16 – 59 lb. Bond/120 lb. Index (60 – 220 g/m ²) Optional PFU: 16 – 28 lb. Bond (60 – 105 g/m ²) Duplex: 16 – 24 lb. Bond (60 – 90 g/m ²)
Acceptable Paper Types	Standard Tray: Plain Paper, Middle Thick, Thick Paper, Thin Paper, Letterhead, Label Paper, Coated Paper (Glossy), Coated Paper (Matted), Special Paper, Preprinted Paper, Color Paper, Recycled Paper

Optional Paper Feed Unit:	Plain Paper, Middle Thick, Thick Paper, Thin Paper, Letterhead, Preprinted Paper, Color Paper, Recycled Paper
Bypass Tray:	Plain Paper, Middle Thick, Thick Paper, Thin Paper, Letterhead, Label Paper, Coated Paper (Glossy), Coated Paper (Glossy: Thick), Coated Paper (Matted), Coated Paper (Matted: Thick), Cardstock, Special Paper, Bond Paper, Preprinted Paper, Color Paper, Recycled Paper, Envelope
Dimensions (WxDxH)	15.8" x 18.9" x 15.2" (400 mm x 480 mm x 387 mm)
Weight	63.9 lb. (29 kg)
Warm-Up Time	20 sec. or less
Power Source	120V, 60Hz
Power Consumption	Maximum: 1300W or less Energy Saver: 5.5W or less
Safety Regulations	UL60950-1, 2 nd Edition, CAN/CSA C22.2 No.60950-1 (c-UL), FCC 47CFR Part 15 Subpart B (Class B), Energy Star Version 1.1

Controller Specifications

CPU	533 MHz
Printer Languages/Drivers	PCL 5c/6, XPS, PostScript 3 emulation plus PDF Direct Print, PictBridge (optional)
Fonts	45 PCL, 13 International, 80 PS3
Memory (RAM)	384 MB standard/768 MB maximum
Standard Interfaces	USB 2.0, 10/100Base-TX Ethernet, USB 2.0-Host
Optional Interfaces	IEEE 1284/ECP Parallel, Gigabit Ethernet, IEEE 802.11a/g Wireless LAN, PictBridge
Network Protocols	TCP/IP (IPv4, IPv6), AppleTalk, IPX/SPX, IPsec
Operating Systems	Windows 2000/XP/Vista/Server 2003/R2, Server 2008/R2, 7; Mac OS v.8.6 or later; Novell NetWare 6.5 or later; SAP R/3; Citrix Presentation Server; UNIX (Ricoh Filter Phase 11)

Controller Options

80 GB Hard Disk Drive	Type C320	Part # 406796
IEEE 802.11a/g Wireless LAN	Type L	Part # 403000
Camera Direct Print Card	Type H	Part # 406676
512 MB Memory	Type I	Part # 414635
VM Card	Type O	Part # 406678
256 MB Memory	Type G	Part # 414046
IEEE 1284/ECP Parallel	Type A	Part # 411699
Gigabit Ethernet Board	Type A	Part # 402547
SD Card for NetWare Print	Type F	Part # 406797

Optional Accessories

Paper Feed Unit Type TK1010	Part # 406019 Paper Size: Letter (8.5" x 11"), A4 (8.3" x 11.7") Paper Weight: 16 – 28 lb. Bond (60 – 105 g/m ²) Capacity: 500 sheets
------------------------------------	--

Software Utilities

Web Image Monitor	
@Remote Communication Gate 5 Pro	
Font Manager 2000	
Embedded Software Architecture (ESA)	

Security Features

Administrator Authentication (5 levels)	
User Authentication (5 types)	
SNMP v3, IPsec Communications	
128-bit SSL Print Job Data Encryption	
Address Book & Password Encryption	
500 User Codes	
User Lockout/Auto Logout/Menu Protection	
Locked Print	
DataOverwriteSecurity System (DOSS) plus HDD Data Encryption	
WPA (Wi-Fi Protect Access)	

Consumables and Yields

Toner Type SP C310A Black	2,800 prints*	Part # 406344
Toner Type SP C310A Cyan	2,800 prints*	Part # 406345
Toner Type SP C310A Magenta	2,800 prints*	Part # 406346
Toner Type SP C310A Yellow	2,800 prints*	Part # 406347
Toner Type SP C310HA Black	7,200 prints*	Part # 406475
Toner Type SP C310HA Cyan	6,600 prints*	Part # 406476
Toner Type SP C310HA Magenta	6,600 prints*	Part # 406477
Toner Type SP C310HA Yellow	6,600 prints*	Part # 406478
Maintenance Kit**	90,000 prints	Part # 406794
Type SP C320		
Intermediate Transfer Unit	90,000 prints	Part # 406067
Type SP C310		
Waste Toner Bottle	55,000 prints	Part # 406066
Type SP C310		

*Declared yield values are in accordance with ISO/IEC 19798. Actual yields may vary based on images printed and other factors.
Ships with toner kits (2,800 prints for all toners); all other consumables ship at full yield.
**Maintenance Kit consists of the Fusing Unit and Transfer Roller.

Warranty

The Ricoh Aficio SP C320DN is under warranty against defects for a period of one year from the date of purchase. Consumables are under warranty for a period of 90 days from the date of purchase or until depleted, whichever ever comes first. Please refer to warranty document shipped with the product for more details.

For maximum performance and yield, we recommend using genuine Ricoh parts and supplies.

www.ricoh-usa.com

Bringing Ricoh Value to Your Organization
Ricoh technology offers a diverse portfolio of solutions to help your organization stay competitive and move ahead. Let Ricoh show you how to empower your business to improve critical processes, keep information secure, support compliance initiatives and promote environmental sustainability while reducing the total cost of ownership.

Ricoh Americas Corporation, Five Dedrick Place, West Caldwell, NJ 07006
Ricoh® and the Ricoh Logo are registered trademarks of Ricoh Company, Ltd. All other trademarks are the property of their respective owners. The content of this document, and the appearance, features and specifications of Ricoh products and services are subject to change from time to time without notice. Products are shown with optional features. While care has been taken to ensure the accuracy of this information, Ricoh makes no representation or warranties about the accuracy, completeness or adequacy of the information contained herein, and shall not be liable for any errors or omissions in these materials. Actual results will vary depending upon use of the products and services, and the conditions and factors affecting performance. The only warranties for Ricoh products and services are as set forth in the express warranty statements accompanying them.

