

Conex

Push-Fit

Conex Push-Fit Technical Brochure - December 2008



Innovation You Can Trust



Welcome to the Conex Push-Fit Technical Brochure

The content of this publication is for general information only. It is the user's responsibility to determine suitability of any product for the purpose intended and reference should be made to our Technical Department if clarification is required. In the interests of technical development we reserve the right to change specification, design and materials without notice.

For terms and conditions of sale or for further technical details please contact our Head Office on: +44 (0)121 557 2831.



Contents

Overview	2
Key Benefits	4
Tube Compatibility	6
Installation Guide	8
Demounting Tool	9
Technical Information	10
Installation Drawings	12
Conex Push-Fit Range	16



Overview

Connects multiple tubes

Conex Push-Fit is a revolutionary new Push-Fit fitting through its speed, ease of use and wide application. Conex Push-Fit is unique as it is suitable for a wide variety of tube types and is demountable and reusable. It is incredibly versatile across a wide range of applications for the professional plumber.

- Suitable for hot and cold drinking water, heating and chilled water systems.
- Corrosion resistant body in dezincification resistant (DZR) natural brass finish.
- Only two internal components: High grade EPDM O-ring and stainless steel grab ring.
- Precision machined body with in-built tube stabiliser.
- Connects with multiple tubes.
- Professional tool for demounting, fitting can then be reused.
- Unique grab ring ensures the fitting is firmly secured but not fixed. This allows tube to be turned so that valves and gauges can be aligned.
- Maintains electrical continuity on metallic pipe systems.
- Slimline and stylish.
- Flame free.
- Sustainable.



Only two internal components:
High grade EPDM o-ring and Stainless steel grab ring



DZR corrosion resistant body in natural brass finish

Slimline and stylish

Unique grab ring ensures the fitting is firmly secured but not fixed

Demountable and reusable

Maintains electrical continuity

Conex Push-Fit

Conex Push-Fit Key Benefits

One Fitting, Many Tubes

Conex Push-Fit – a professional, universal cold jointing solution for a wide selection of pipes including copper, stainless steel, carbon steel and plastics. So instead of carrying lots of fittings for lots of jobs, using Conex Push-Fit means a lighter toolbox weight and lighter inventory costs.

Fast and Convenient to Install

Conex Push-Fit is fast and convenient to install as it takes just five seconds to create a secure joint. Once connected, Conex Push-Fit remains firm but not fixed so it can be easily turned without becoming misaligned.



Save time and money

Joint	Installation Time (seconds)
Conex Push-Fit	5
Press Fit	10
Compression	33
End Feed	120

Times after tube preparation

Slimline Shape, Heavyweight Performance

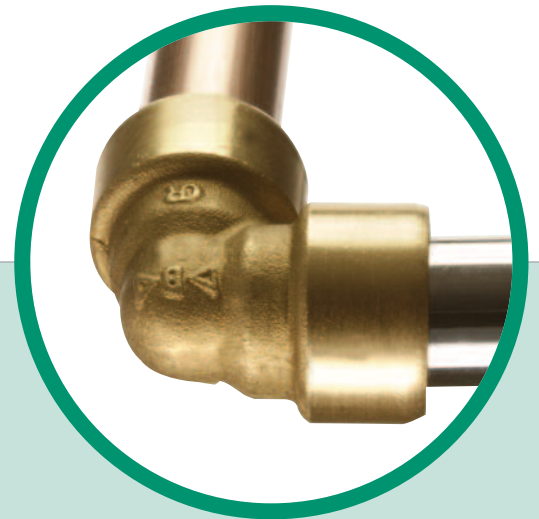
Conex Push-Fit's slimline design makes it ideal for tight corners, but don't be fooled. Its stylish looks may be ideal for exposed pipework but they also hide a patent pending body design made from corrosion-resistant DZR that guarantees a heavyweight performance.

Simple and Reusable

Conex Push-Fit is designed with just two internal parts, a high quality o-ring (EPDM) and a stainless steel grab ring, Conex Push-Fit offers tremendous strength and durability. It is simple to install and has a professional demounting tool to allow the fitting to be reused up to twenty times.

Electrical Continuity

Conex Push-Fit's special design ensures electrical continuity is maintained throughout metallic pipe joints so earth bonding is not affected.



Tube Compatibility

One Fitting Fits All

Conex Push-Fit is a universal fitting that can be used with many different tube types, thus reducing the inventory costs of professional plumbers. It is ideal for use in retrofit plumbing systems where space is confined, or when heat must be avoided.

Copper

Conex Push-Fit fittings will join size-compatible copper tubes that are manufactured in accordance with EN1057. R220 (annealed) temper tube must be recalibrated in accordance with EN1057 Table 4 R250 tolerances.

Carbon Steel

Conex Push-Fit fittings will join size-compatible carbon steel tubes that are manufactured in accordance with EN10305.

Stainless Steel

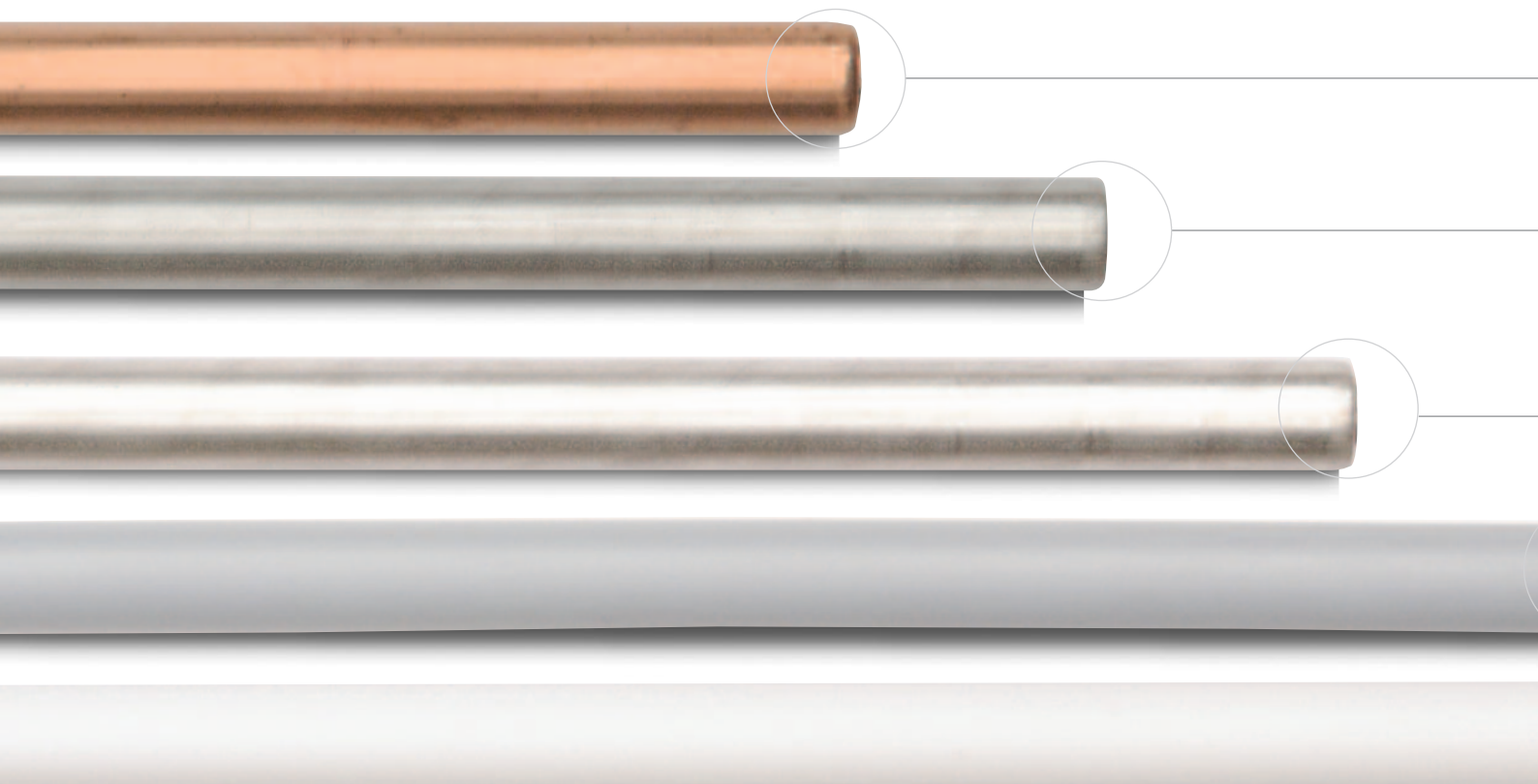
Conex Push-Fit fittings will join size-compatible stainless steel tubes that are manufactured in accordance with EN10312 series 1 & 2.

Plastic Tubes

Conex Push-Fit offers a variety of fittings for joining tubes such as cross-linked polyethylene (PE-X) manufactured in accordance with BS7291-3 and EN15875-2, and polybutylene (PB) manufactured in accordance with BS7291-2 and EN15876-2.

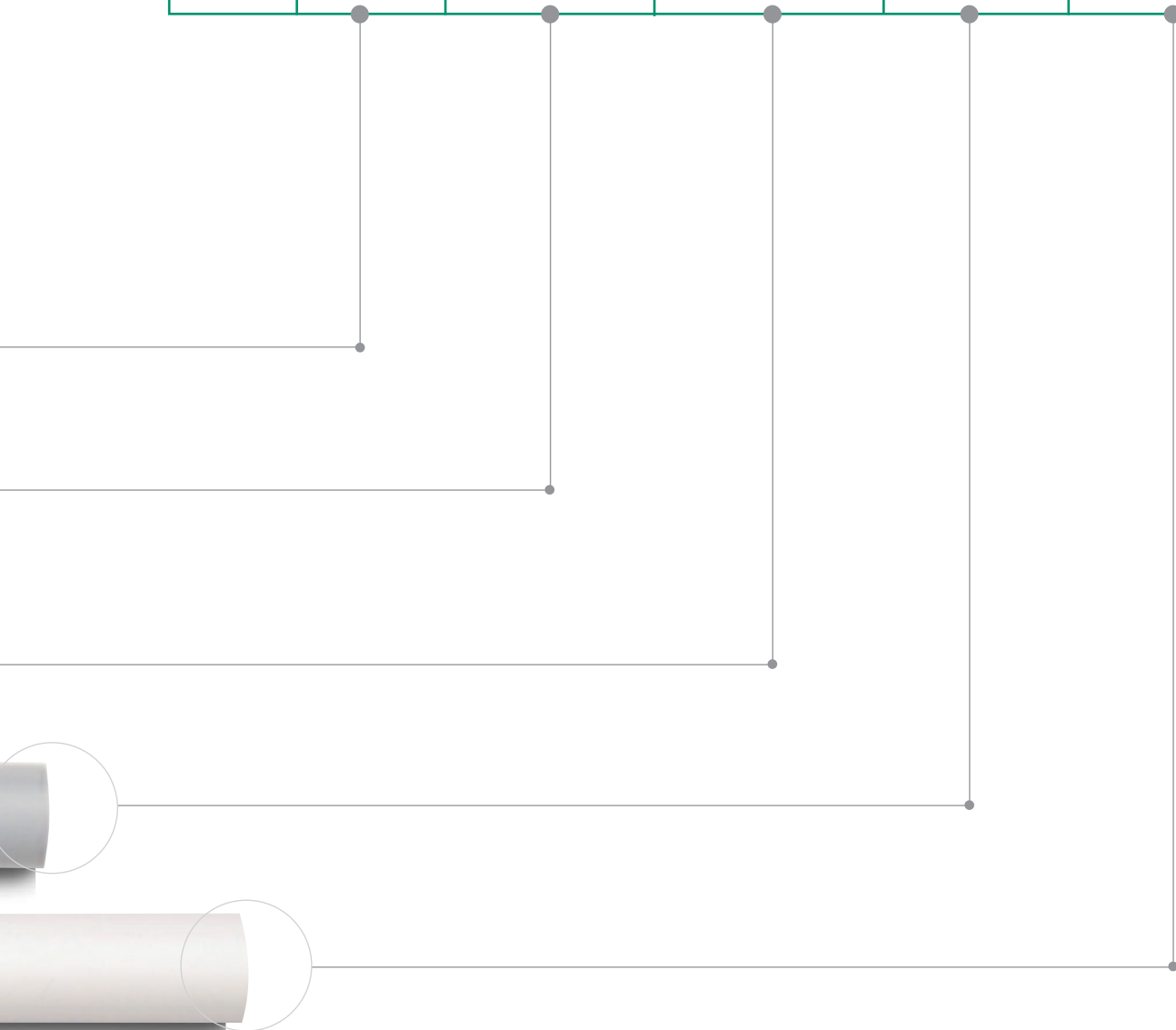
Tube Insertion Depths

Fitting Socket Size	Socket Depth
mm	mm
10	17
12	19
15	18
18	21
22	22
28	24



Tube Compatibility Chart

	Copper EN1057	Carbon Steel DIN2394 EN10305	Stainless Steel EN10312 Series 1 & 2	Polybutylene (PB) BS7291-2 EN15876-2	Polyethylene (PE-X) BS7291-3 EN15876-2
10mm	•	•	•	•	•
15mm	•	•	•	•	•
22mm	•	•	•	•	•
28mm	•	•	•	•	•



Installation Guide

1 Tube preparation

Cut the tube end square and ensure it retains its shape.

Deburr the tube.

If using R220 (annealed) temper tube, re-calculate in accordance with EN1057 Table 4 R250 tolerances.



tool head



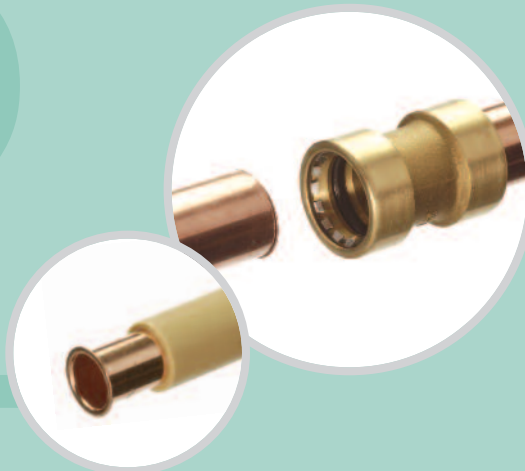
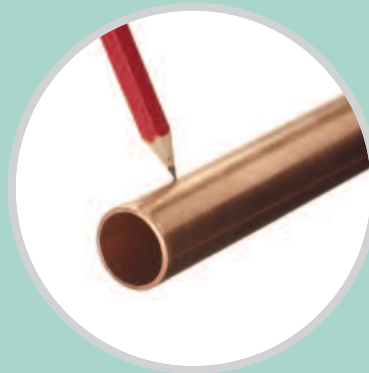
2 Making the joint

Mark the tube with the correct insertion depth.

When joining plastic tubes insert an appropriate tube liner.

Simply push the tube into the fitting socket ensuring the tube contacts with the tube stop.

Pull the tube to ensure the grip ring is engaged.



Unique Conex Push-Fit Demounting Tool

IBP Conex has developed a professional release tool to demount the fitting in order for the fitting to be reused up to twenty times. The tool is supplied with different sized heads which are quick and easy to change.

The Conex Push-Fit tool can also be used to aid installation by holding back the grab ring during pipe insertion.

The tool can be purchased as a complete set with a tool and four heads (10, 15, 22 and 28mm). The tool and tool heads can also be purchased separately.

Adjustment of the Tool

- Open the tool by unlocking the handles using the release button
- Place the tool head between the jaws by depressing the springs on the tool head. Close the tool handles to lock.
- If the tool head is loose, reduce the gap using the adjusting screw dial in the base of the handle. When the gap is correct the tool head will fit and the tool will lock.
- If the tool head will not fit, open the gap using the adjusting screw dial in the base of the handle. When the gap is correct the tool head will fit and the tool will lock.

To Release a Fitting

1. Fit the correct sized head to the release tool, by depressing the springs on the head, and locating on the tool. The head can only be fitted if the gap between the jaws are correctly set.
2. Ensure the jaws are open. The head can be fitted for left, or right hand operation.
3. Clip the tube into the head, with the shoulder of the fitting against the 'U' shaped collar.
4. Squeeze the tool handles, so the projection on the head depresses the grip ring teeth.
5. With the tool handles locked, pull the tube from the fitting.
6. Unlock the tool to release the fitting.



tool jaws

Professional release tool

The Conex Push-Fit tool can also be used to aid tube installation

Technical Information

Conex Push-Fit fittings meet the performance and test requirements of prEN1254-part 6 copper alloy plumbing fittings with Push-Fit ends.

Application and Uses

Conex Push-Fit can be used in a wide range of commercial and domestic applications involving drinking water; hot and cold sanitary; and water heating and cooling systems.

Conex Push-Fit fittings are ideal for retrofit plumbing schemes, where space is confined and where the use of flame must be avoided.

Conex Push-Fit's ability to connect different types of tube, along with its simplicity, versatility and speed of installation, will make it a popular choice for installers.

Size Availability

Conex Push-Fit is currently available in sizes 10, 15, 22 and 28mm.

Conex Push-Fit fittings are suitable for connecting copper, carbon steel, stainless steel and plastic pipe including crossed linked polyethylene (PE-X), and polybutylene (PB).

Fitting Materials

To counteract the problem of dezincification and meet certain water regulation requirements, Conex Push-Fit is manufactured dezincification resistant (DZR) brass.

Finish Availability

Conex Push-Fit is currently available in natural brass finish.

Performance

Conex Push-Fit conforms to normal operating parameters for joints to metallic tubes:

Operating Temperature °C	Maximum Operating Pressure (MOP) Bar
0 - 30	16
65	10
95	6

To allow for system malfunctions, fittings are capable of temporary excursions up to a temperature of 110°C at a pressure of 6 bar.

- Maximum working temperature of 95°C at operating pressure of 6 bar
- Maximum working pressure of 16 bar at ambient temperature (30°C).
- Temporary excursions to 110°C for system failure conditions.

For Joints with Plastic Pipes

The operating temperatures and maximum operating pressures for the assembled joints shall be determined by the plastic pipe material properties, details of which are available from the plastic pipe supplier.

Reusing the Fitting

Before reusing, ensure the fitting is not damaged. The tube must be trimmed back to a fresh tube section.

Tests support that fittings can be demounted and reused up to 20 times providing no damage has been caused to the o-ring or grab ring.

Do not attempt to dismantle the joint prior to applying the force with the release tool.

Pull Test

Tensile tests to EN1254-6 requirements are exceeded by Conex Push-Fit fittings. Test requirements are equivalent to 1.5 times safe working pressure to ensure a guaranteed joint.

Connecting Threads

Taper male threads are in accordance with ISO 7 and EN1254-4. Parallel female threads are in accordance with EN 1254-4 and ISO 228.

Health and Safety

It is the responsibility of the end user to ensure that adequate protection is available where required and that the necessary information regarding possible health and safety regulations is adhered to. Copper and copper alloy fittings are considered non-hazardous under normal circumstances. All per COSHH 4 REG 1988. These fittings have functional sharp components.

Quality Assurance

IBP Conex is an ISO 9001 Quality Assured company registered with the BSI. We are committed to providing quality products and support to our customers that will meet or exceed their expectations and needs. Our ISO 9001 certification assures our customers the very best in product quality.

Trade Marks

Conex Push-Fit is a registered trademark in the UK and throughout the European community.

Approvals

Conex Push-Fit fittings are WRAS approved.

Patents

IBP has applied for a patent relating to the Conex Push-Fit release tool, and has obtained a patent relating to the Conex Push-Fit body design which is subject to European patent 1 752 462.

Guarantee

When professionally installed and used in accordance with the guidelines laid out in the Conex Push-Fit Technical Brochure, (copies of which are available on request) Conex Push-Fit fittings supplied by IBP Conex Ltd are guaranteed against manufacturing defect for thirty years from first purchase date. Any alleged defects must be reported to us within one month of the first occurrence, clearly setting out the nature of the claim. The Guarantee is limited to the repair or replacement of defective fittings at our discretion and we reserve the right to inspect and test the alleged defects. This guarantee provided by IBP Conex Ltd does not affect your statutory rights.*

Sustainability

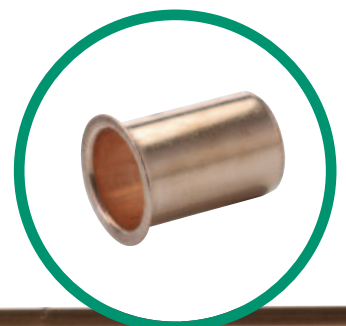
Conex Push-Fit fittings are sustainable as they can be demounted and reused up to twenty times. Also Conex Push-Fit fittings are made from recyclable material.

Specification Clause

Push-Fit fittings are to be designed for connection to copper pipe manufactured to EN 1057, stainless steel manufactured to EN 10312, galvanised carbon steel manufactured to EN 10305, PE-X and PB plastic pipes as applicable. Suitable for pressures of up to 6 bar at 95°C increasing to 10 bar at 65°C and 16 bar between 0°C and 30°C (excursions to 110°C at 6 bar to be allowed) (temperature and pressures based on 50/50% Water/Glycol mix). Typically as Conex Push-Fit range. Materials of construction are to be WRAS approved and where applicable DZR Brass is to be used. Electrical continuity must be maintained on metallic systems across all joints. All joints should be capable of being demountable.

Electrical Continuity

Conex Push-Fit's special design ensures electrical continuity is maintained throughout metallic pipe joints, so earth bonding is not affected.



Internal Liners

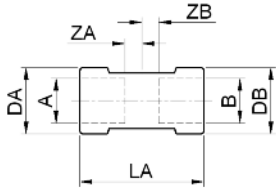
When joining plastic pipes, a supporting liner appropriate to the pipe size must be used. This can either be a Conex Push-Fit liner or one supplied by the pipe manufacturer.

* Please see notes on inside back cover

Installation Drawings

ZN8270 Straight Coupler

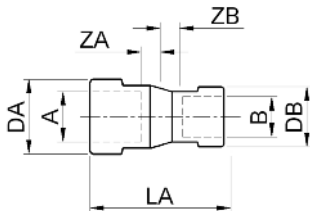
Push-Fit x Push-Fit



Configuration	A	B	C	DA	DB	DC	LA	LB	LC	ZA	ZB	ZC	Product Code
10mm	10	10		17	17		36			2	2		ZN8270 0100000
15mm	15	15		22	22		40			3	3		ZN8270 0150000
22mm	22	22		30	30		48			4	4		ZN8270 0220000
28mm	28	28		37	37		51			4	4		ZN8270 0280000

ZN8240 Reduced Coupler

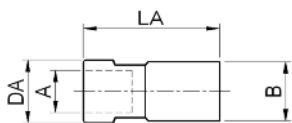
Push-Fit x Push-Fit



Configuration	A	B	C	DA	DB	DC	LA	LB	LC	ZA	ZB	ZC	Product Code
15 x 10mm	15	10		22	17		38			3	2		ZN8240 0151000
22 x 15mm	22	15		30	22		46			6	4		ZN8240 0221500

ZN8243 Fitting Reducer

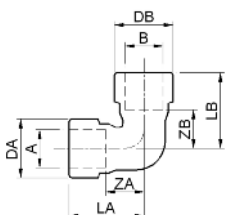
Push-Fit x Push-Fit



Configuration	A	B	C	DA	DB	DC	LA	LB	LC	ZA	ZB	ZC	Product Code
15 x 10mm	10	15		17			46						ZN8243 0151000
22 x 15mm	15	22		22			48						ZN8243 0221500
28 x 22mm	22	28		30			55						ZN8243 0282200

ZN8090 Elbow

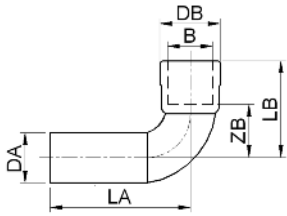
Push-Fit x Push-Fit



Configuration	A	B	C	DA	DB	DC	LA	LB	LC	ZA	ZB	ZC	Product Code
10mm	10	10		15	15		24	24		7	7		ZN8090 010000
15mm	15	15		22	22		28	28		10	10		ZN8090 015000
22mm	22	22		30	30		32	32		10	10		ZN8090 022000
28mm	28	28		37	37		38	38		14	14		ZN8090 028000

ZN8001 Street Elbow

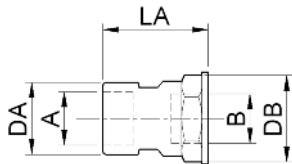
Copper x Push-Fit



Configuration	A	B	C	DA	DB	DC	LA	LB	LC	ZA	ZB	ZC	Product Code
15mm	15	15		27			27	36		10			ZN8001 0150000
22mm	22	22		30			36	40		16			ZN8001 0220000
28mm	28	28		37			38	45		16			ZN8001 0280000

ZN8270G Straight Female Connector

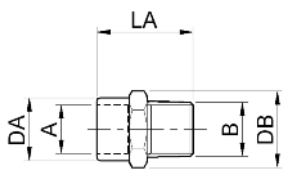
Push-Fit x BSP Female Thread



Configuration	A	B	C	DA	DB	DC	LA	LB	LC	ZA	ZB	ZC	Product Code
15mm x 1/2"	15	1/2"		22	24		36						ZN8270G0150400
22mm x 3/4"	22	3/4"		30	30		39						ZN8270G0220600
28mm x 1"	28	1"		37	38		47						ZN8270G0280800

ZN8243G Straight Male Connector

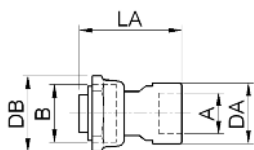
Push-Fit x BSP Male Thread



Configuration	A	B	C	DA	DB	DC	LA	LB	LC	ZA	ZB	ZC	Product Code
15mm x 1/2"	15	1/2"		22	24		42						ZN8243G0150400
22mm x 3/4"	22	3/4"		30	30		47						ZN8243G0220600
28mm x 1"	28	1"		37	37		50						ZN8243G0280800

ZN8240G Straight Tap Connector

Push-Fit x BSP Female Thread

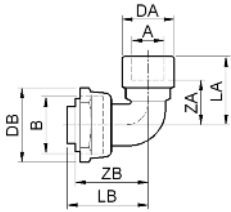


Configuration	A	B	C	DA	DB	DC	LA	LB	LC	ZA	ZB	ZC	Product Code
15mm x 1/2"	15	1/2"		22	27		40						ZN8240G0150400
15mm x 3/4"	15	3/4"		22	32		40						ZN8240G0150600
22mm x 3/4"	22	3/4"		30	32		50						ZN8240G0220600

Installation Drawings

ZN8002G Bent Tap Connector

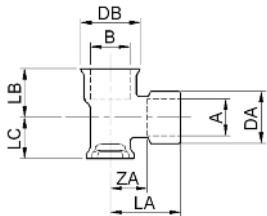
Push-Fit x BSP Female Thread



Configuration	A	B	C	DA	DB	DC	LA	LB	LC	ZA	ZB	ZC	Product Code
15mm x 1/2"	15	1/2"	22	24.5	27	29		10	21				ZN8008G0150400

Z472G Wall Plate Elbow

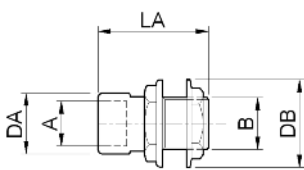
Push-Fit x BSP Female Thread



Configuration	A	B	C	DA	DB	DC	LA	LB	LC	ZA	ZB	ZC	Product Code
15mm x 1/2"	15	1/2"		22	27		27	22	19	12			ZN8472G0150400

ZN8350 Tank Connector

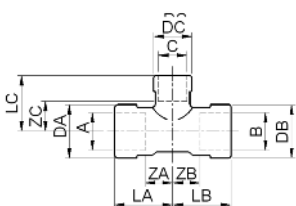
Push-Fit x BSP Male Thread



Configuration	A	B	C	DA	DB	DC	LA	LB	LC	ZA	ZB	ZC	Product Code
15mm x 1/2"	15	1/2"		22	38		49						ZN8350 0150400
22mm x 3/4"	22	3/4"		30	43		51						ZN8350 0220600
28mm X 1"	28	1"		37	49		62						ZN8350 0280800

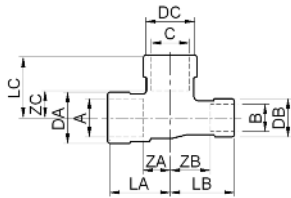
ZN8130 Equal Tee

Push-Fit x Push-Fit



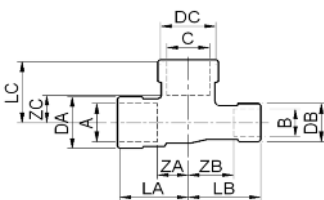
Configuration	A	B	C	DA	DB	DC	LA	LB	LC	ZA	ZB	ZC	Product Code
10mm	10	10	10	15	15	15	24	24	24	7	7	7	ZN8130 0101010
15mm	15	15	15	22	22	22	27	27	27	10	10	10	ZN8130 0151515
22mm	22	22	22	30	30	30	32	32	32	10	10	10	ZN8130 0222222
28mm	28	28	28	37	37	37	38	38	38	15	15	15	ZN8130 0282828

ZN8130 Reduced Branch Tee Push-Fit x Push-Fit



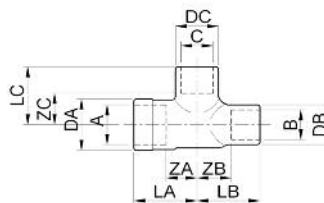
Configuration	A	B	C	DA	DB	DC	LA	LB	LC	ZA	ZB	ZC	Product Code
22 x 22 x 15mm	22	22	15	30	30	22	28	28	31	8	8	15	ZN8130 02201522
28 X 28 x 15mm	28	28	15	37	37	22	34	34	31	9	9	17	ZN8130 02801528
28 x 28 x 22mm	28	28	22	37	37	30	34	34	36	12	12	17	ZN8130 02802228

ZN8130 Reduced End Tee Push-Fit x Push-Fit



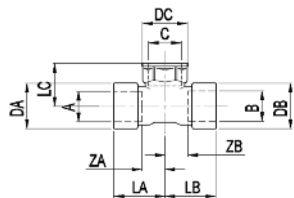
Configuration	A	B	C	DA	DB	DC	LA	LB	LC	ZA	ZB	ZC	Product Code
22 x 15 x 22mm	22	15	22	30	22	30	28	31	28	8	15	8	ZN8130 02202215
28 X 15 x 28mm	28	15	28	37	22	37	34	31	34	9	17	9	ZN8130 02802815
28 x 22 x 28mm	28	22	28	37	30	37	34	36	34	12	17	12	ZN8130 02802822

ZN8130 Reduced End & Branch Tee Push-Fit x Push-Fit



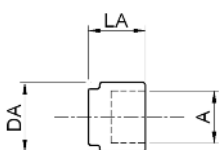
Configuration	A	B	C	DA	DB	DC	LA	LB	LC	ZA	ZB	ZC	Product Code
15 x 10 x 10mm	15	10	10	22	17	17	26	25	28	8	7	10	ZN8130 0151010
22 x 15 x 15mm	22	15	15	30	22	22	34	27	33	19	9	15	ZN8130 0221515
28 x 22 x 22mm	28	22	37	30	30	22	40	35	40	15	13	18	ZN8130 0282222

ZN8130G Female Branch Tee Push-Fit x BSP Female Thread



Configuration	A	B	C	DA	DB	DC	LA	LB	LC	ZA	ZB	ZC	Product Code
15 x 1/2" x 15mm	15	1/2	15	20	20	24	29	29	25	13	13		ZN8130G0150415

ZN8301 Stop End Push-Fit Push-Fit



Configuration	A	B	C	DA	DB	DC	LA	LB	LC	ZA	ZB	ZC	Product Code
10mm	10			17			19						ZN8301 0100000
15mm	15			22			20						ZN8301 0150000
22mm	22												ZN8301 0220000
28mm	28			37			29						ZN8301 0280000

Conex Push-Fit

Conex Push-Fit Range

270 Straight Coupler



Item Code	Description	Size	Pack Qty
ZN8270 0100000	STRAIGHT COUPLER	10mm	10
ZN8270 0150000	STRAIGHT COUPLER	15mm	10
ZN8270 0220000	STRAIGHT COUPLER	22mm	10
ZN8270 0280000	STRAIGHT COUPLER	28mm	5

240 Reduced Coupler



Item Code	Description	Size	Pack Qty
ZN8240 0151000	REDUCED COUPLER	15 x 10mm	10
ZN8240 0221500	REDUCED COUPLER	22 x 15mm	10

243 Fitting Reducer



Item Code	Description	Size	Pack Qty
ZN8243 0151000	FITTING REDUCER	15 x 10mm	10
ZN8243 0221500	FITTING REDUCER	22 x 15mm	10
ZN8243 0282200	FITTING REDUCER	28 x 22mm	5

090 Elbow



Item Code	Description	Size	Pack Qty
ZN8090 0100000	ELBOW	10mm	10
ZN8090 0150000	ELBOW	15mm	10
ZN8090 0220000	ELBOW	22mm	10
ZN8090 0280000	ELBOW	28mm	5

001 Street Elbow



Item Code	Description	Size	Pack Qty
ZN8001 0150000	STREET ELBOW	15mm	10
ZN8001 0220000	STREET ELBOW	22mm	10
ZN8001 0280000	STREET ELBOW	28mm	5

270G Straight Female Connector



Item Code	Description	Size	Pack Qty
ZN8270G0150400	STRAIGHT FEMALE CONNECTOR	15mm x 1/2"	5
ZN8270G0220600	STRAIGHT FEMALE CONNECTOR	22mm x 3/4"	5
ZN8270G0280800	STRAIGHT FEMALE CONNECTOR	28mm x 1"	5

243G Straight Male Connector



Item Code	Description	Size	Pack Qty
ZN8243G0150400	STRAIGHT MALE CONNECTOR	15mm x 1/2"	5
ZN8243G0220600	STRAIGHT MALE CONNECTOR	22mm x 3/4"	5
ZN8243G0280800	STRAIGHT MALE CONNECTOR	28mm x 1"	5

240G Straight Tap Connector



Item Code	Description	Size	Pack Qty
ZN8240G0150400	STRAIGHT TAP CONNECTOR	15mm x 1/2"	5
ZN8240G0150600	STRAIGHT TAP CONNECTOR	15mm x 3/4"	5
ZN8240G0220600	STRAIGHT TAP CONNECTOR	22mm x 3/4"	5

Conex Push-Fit

Conex Push-Fit Range

002G Bent Tap Connector



Item Code	Description	Size	Pack Qty
ZN8002G0150400	BENT TAP CONNECTOR	15mm x 1/2"	5

472G Wall Plate Elbow



Item Code	Description	Size	Pack Qty
ZN8472G0150400	WALL PLATE ELBOW	15mm x 1/2"	5

350 Tank Connector

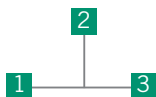


Item Code	Description	Size	Pack Qty
ZN8350 0150400	TANK CONNECTOR	15mm x 1/2"	10
ZN8350 0220600	TANK CONNECTOR	22mm x 3/4"	10
ZN8350 0280800	TANK CONNECTOR	28mm x 1"	5

130 Equal Tee



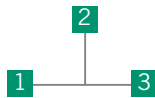
Item Code	Description	Size	Pack Qty
ZN8130 0101010	EQUAL TEE	10mm	10
ZN8130 0151515	EQUAL TEE	15mm	10
ZN8130 0222222	EQUAL TEE	22mm	10
ZN8130 0282828	EQUAL TEE	28mm	5



130 Reduced Branch Tee



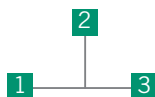
Item Code	Description	Size	Pack Qty
ZN8130 0221522	REDUCED BRANCH TEE	22 x 22 x 15mm	5
ZN8130 0281528	REDUCED BRANCH TEE	28 x 28 x 15mm	5
ZN8130 0282228	REDUCED BRANCH TEE	28 x 28 x 22mm	5



130 Reduced End Tee



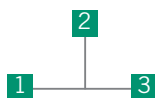
Item Code	Description	Size	Pack Qty
ZN8130 0222215	REDUCED END TEE	22 x 15 x 22mm	10
ZN8130 0282815	REDUCED END TEE	28 x 15 x 28mm	5
ZN8130 0282822	REDUCED END TEE	28 x 22 x 28mm	5



130 Reduced End & Branch Tee



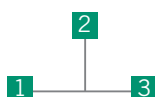
Item Code	Description	Size	Pack Qty
ZN8130 0151010	REDUCED END & BRANCH TEE	15 x 10 x 10mm	10
ZN8130 0221515	REDUCED END & BRANCH TEE	22 x 15 x 15mm	10
ZN8130 0282222	REDUCED END & BRANCH TEE	28 x 22 x 22mm	5



130 Female Branch Tee



Item Code	Description	Size	Pack Qty
ZN8130G0150415	FEMALE BRANCH TEE	15 x 1/2" x 15mm	5



Conex Push-Fit

Conex Push-Fit Range

301 Stop End Cap



Item Code	Description	Size	Pack Qty
ZN8301 0100000	STOP END CAP	10mm	10
ZN8301 0150000	STOP END CAP	15mm	10
ZN8301 0220000	STOP END CAP	22mm	10
ZN8301 0280000	STOP END CAP	28mm	5

Release Tool & Head Pack



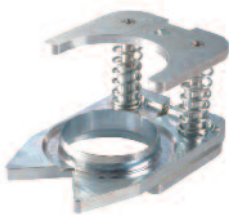
Item Code	Description	Size	Pack Qty
CP-FSET002	TOOL KIT - PLIER WITH 10, 15, 22 & 28mm HEAD UNITS & CASE	10, 15, 22, 28mm	1

Tool



Item Code	Description	Size	Pack Qty
CP-FPLIER	TOOL (NO HEADS)	-	1

Tool Heads



Item Code	Description	Size	Pack Qty
CP-FHEAD10	TOOL HEADS	10mm	1
CP-FHEAD15	TOOL HEADS	15mm	1
CP-FHEAD22	TOOL HEADS	22mm	1
CP-FHEAD28	TOOL HEADS	28mm	1

Internal Liners



Item Code	Description	Size	Pack Qty
C183031000PP	INTERNAL LINER	10mm - PE-X/PB	25
E203031000PP	INTERNAL LINER	15mm - PB	50
E183031000PP	INTERNAL LINER	15mm - PE-X	50
G233031000PP	INTERNAL LINER	22mm - PE-X/PB	50
H293031000PP	INTERNAL LINER	28mm - PE-X/PB	10

***Notes:**

1. Conex Push-Fit fittings are supplied subject to IBP Conex normal Terms and Conditions of Sale, copies of which are available on request, supplemented by the Conex Push-Fit Guarantee.
2. Conex Push-Fit fittings are only suitable for use in applications as described in this Technical brochure and when installed in accordance with relevant tube specifications, industry Standards and common industry practices.
3. It is the responsibility of the professional installer to ensure that the fittings are installed as specified in this Technical brochure, if in doubt contact the IBP Conex Ltd Technical Department.

United Kingdom

IBP Conex Limited
Whitehall Road, Tipton
West Midlands DY4 7JU
UNITED KINGDOM
Tel: +44 (0)121 557 2831
Fax: +44 (0)121 520 8778
email: salesuk@ibpgroup.com
technical@ibpgroup.com
literature@ibpgroup.com
web: www.ibpgroup.com
www.ibpconex.co.uk

Germany

IBP GmbH
Erdkauter Weg 17
D-35394 Giessen
GERMANY
Tel: +49 641 70070
Fax: +49 641 7007361
web: www.baenninger.info

Spain/France

IBP Atcosa, SL
Pol. Ind. Quintos-Aeropuerto
Apartado de Correos 16
14005 Córdoba
SPAIN
Tel: +34 957 469629
Fax: +34 957 469604
web: www.ibpatcosa.com

Italy

IBP Bänninger Italia Srl
Strada Provinciale Asolana
No. 92
43056 San Polo di Torrile
(Parma)
ITALY
Tel: +39 0521 317311
Fax: +39 0521 317355
web: www.ibpbanningeritalia.it

Poland Sales, Marketing and Logistics

IBP Instal fittings Sp. z o.o.
ProLogis Park Poznan II
Sady, ul. Za Motelem 2A
62-080 Tarnowo Podgórne
POLAND
Tel: +48 61 6609640
Fax: +48 61 6609638
web: www.ibpgroup.com.pl

Poland

IBP Instal fittings SP z o.o.
ul Obodrzycka 61
61-249 Poznan
POLAND
Tel: +48 61 8 770051
Fax: +48 61 8 790949
web: www.ibpgroup.com.pl