

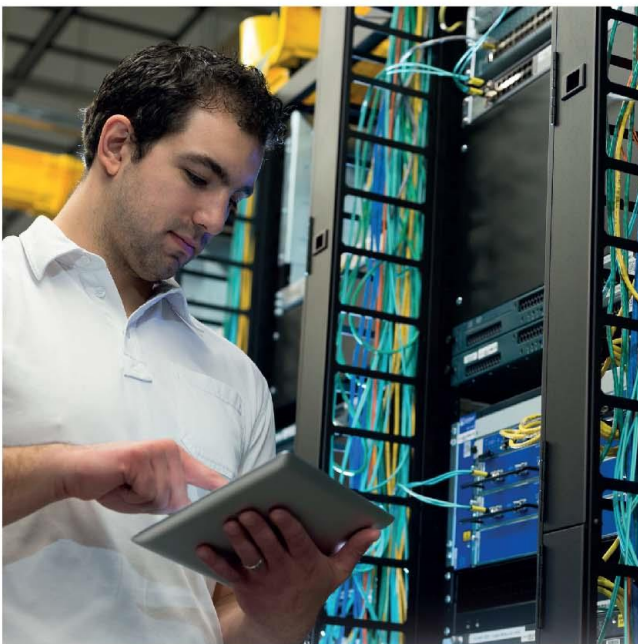
# Cronus Series

1KVA - 10KVA

Cost-effective

Double Conversion

Online UPS



- True double-conversion sinewave UPS
- Microprocessor control optimizes reliability
- Input power factor correction
- Output power factor 0.8
- Wide input voltage (110 V – 300 V)
- Built-in frequency converter mode
- ECO mode for energy saving (only available for 1-3KVA)
- Full connectivity for SNMP and USB / RS232
- Comprehensive display allows easy monitoring of the UPS status
- Generator compatible



# Cronus Series

Cost-effective  
Double  
Conversion  
Online UPS

Cronus  
6KS/10KS

Cronus  
3KS/3KS

Cronus 2K/2KS

Cronus 1K/1KS

## Technical Specification

MODEL	Cronus 1K/KS	Cronus 2K/2KS	Cronus 3K/3KS	Cronus 6K/KS	Cronus 10K/KS	
<b>PHASE</b>	Single phase with ground					
Capacity (VA/W)	1000VA / 800W	2000VA / 1600W	3000VA / 2400W	6000VA / 4800W	10000VA / 8000W	
<b>INPUT</b>						
Nominal Voltage	100 / 110 / 115 / 120 / 127 VAC or 200 / 208 / 220 / 230 / 240 VAC			208/220/230/240 VAC		
Input Voltage Range	55-150 VAC or 110-300 VAC (Based on load at 50%) 85-140 VAC or 160-280 VAC (Based on load at 100%)			110-300 VAC (Based on load at 50%) 176-300 VAC (Based on load at 100%)		
Frequency Range	40 Hz ~ 70 Hz			46 Hz ~ 54 Hz or 56 Hz ~ 64 Hz		
Power Factor	≥ 0.99 @ Nominal Voltage (100% load)					
<b>OUTPUT</b>						
Output Voltage	100 / 110 / 115 / 120 / 127 VAC or 200 / 208 / 220 / 230 / 240 VAC			208 / 220 / 230 / 240 VAC		
Voltage Regulation	± 1%					
Frequency Range (Synchronized Range)	47 Hz ~ 53 Hz or 57 Hz ~ 63 Hz			46 Hz ~ 54 Hz or 56 Hz ~ 64 Hz		
Frequency Range (Battery mode)	50 Hz ± 0.25 Hz or 60 Hz ± 0.3 Hz			50 Hz or 60 Hz ± 0.1 Hz		
Current Crest Ratio	3:1					
Harmonic Distortion	≤ 3 % THD (Linear Load) ≤ 6 % THD (Non-linear Load)			≤ 3 % THD (Linear Load) ≤ 5 % THD (Non-linear Load)		
Transfer Time	AC Mode to Battery Mode	0 ms				
	Inverter to Bypass	4 ms (Typical)			0 ms	
Waveform (Battery mode)	Pure Sinewave					
<b>EFFICIENCY</b>						
AC Mode	88%	88%	90%	92%	93%	
Battery Mode	83%	87%	88%	90%	91%	
<b>BATTERY</b>						
Standard Model	Battery Type	12 V / 9 AH				
	Quantity	2	4	6	12	16
	Typical Recharge Time	4 hours recover to 90% capacity			9 hours recover to 90% capacity	
	Charging Current (max.)	1A			1A	
	Charging Voltage	27.4 VDC ± 1%	54.7 VDC ± 1%	82.1 VDC ± 1%	163.8 VDC ± 1%	218.4 VDC ± 1%
Extended Runtime Model	Battery Type	Depending on applications				
	Quantity	2	4	6	16 - 20 (adjustable)	
	Charging Current (max.)	1A/2A/4A/6A (adjustable)			1A/2A/4A/6A (6A is only available for 16pcs batteries)	
	Charging Voltage	27.4 VDC ± 1%	54.7 VDC ± 1%	82.1 VDC ± 1%	273VDC ± 1% (based on 20pcs batteries)	
<b>STATUS INDICATORS</b>						
Graphical LCD Display	Load level, battery level, AC mode, battery mode, bypass mode, and fault					
<b>AUDIBLE ALARM</b>						
Battery Mode	Beeping every 4 sec					
Battery Low	Beeping every sec					
Overload	Beeping twice every sec					
Fault	Continuous beeping					
<b>PHYSICAL</b>						
Standard Model	Dimension, W x D x H (mm)	145 x 282 x 220	145 x 397 x 220	190 x 421 x 318	190 x 369 x 573	190 x 442 x 688
	Net Weight (kg)	9.8	17.0	27.6	49.0	66.0
KS Model	Dimension, W x D x H (mm)	145 x 397 x 220		190 x 421 x 318	190 x 442 x 318	
	Net Weight (kg)	4.1	6.8	7.4	12.0	16.0
<b>COMMUNICATIONS</b>						
Interface Port	USB, Smart RS-232, EPO & Intelligent slot					
Intelligent Slot	AS400 / SNMP - optional					
Emergency Power Off (EPO)	Yes					
<b>POWER MANAGEMENT</b>						
Software	Yes; Support Window® family, Unix, Linux, Ubuntu, Solaris & MAC Operating System					
<b>ENVIRONMENT</b>						
Humidity	20-90 % RH @ 0- 40°C (non-condensing)			0-95% RH @ 0-50°C (non-condensing)	0-95% RH @ 0-40°C (non-condensing)	
Noise Level	< 50dBA @ 1 Meter			< 55dBA @ 1 Meter	< 58dBA @ 1 Meter	

- 1-3KVA: Derate to 80% of capacity in Frequency converter mode and to 80% when the output voltage is adjusted to 100/200/208VAC
- 6-10KVA: Derate to 60% of capacity in Frequency converter mode and to 90% when the output voltage is adjusted to 208VAC
- In the interests of continuous product improvement, all specifications are subject to change without notice.

**NEUROPOWER (M) SDN. BHD.** (637145-P)

D7-3A, Blok D7, Pusat Perdagangan Dana 1,  
Jalan PJU 1A/46, 47301 Petaling Jaya, Selangor, Malaysia.  
Tel: +60 (3) 7842 9190 Fax: +60 (3) 7842 9254  
Hotline: 1300 88 6772 (NPSB)

[www.neuropower.com.my](http://www.neuropower.com.my)