








**MORE IMMERSIVE PROJECTION,  
 LESS INTERFERENCE.**

For smooth, uninterrupted presentations, look no further than Epson's series of short-throw projectors. With short-throw projection ability, glare or shadow interference will no longer be a hindrance. Enjoy significant cost-savings as well, with 10,000 hours of lamp life in eco-mode.



EB-535W/530

-   
 Short Throw
-   
 10,000 Hours Lamp Life in Eco Mode
-   
 Multi-PC Projection
-   
 HDMI
-   
 Wi-Fi

**ENGINEERED FOR BUSINESS**

<p><b>Superb Short-throw Performance</b>                  A throw ratio of 0.48 reduces glare and shadow interference, creating seamless presentations.</p>	<p><b>Multi-PC Projection</b>                  Project multiple content from different sources simultaneously.</p>	<p><b>Eco-friendly and Cost-efficient</b>                  Save costs and energy consumption with 10,000 hours of lamp life in eco-mode.</p>
---	--	--



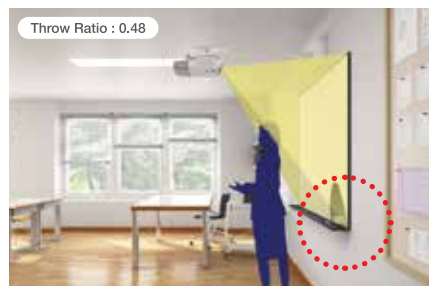
Project large screen sizes even at close range and make your presentations larger-than-life with Epson's short-throw projectors. Featuring versatile projection modes and flexible positioning, you can easily deliver wide projections with minimal shadow interference even within a limited space.



### Superb Short-throw Performance

#### Impressive Screen Size at Close Range

Deliver uninterrupted presentations every time with Epson's short-throw projectors. This projector series boasts a throw ratio as low as 0.48, allowing you to project an 80-inch large screen from just 83cm away.



Epson's short-throw projector



Other projector

#### Reduced Shadow Interference & Minimised Glare

The short throw distance also significantly reduces glare on the presenter and shadow interference on the screen, making the viewing experience conducive and comfortable for everyone in the room.



Conventional projector with blinding glare on presenter's face

Epson's short-throw projector

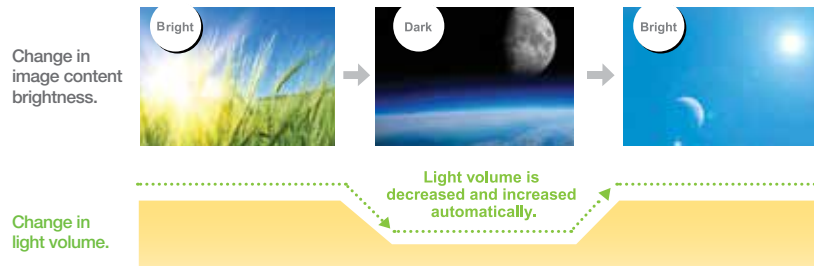
## Eco-friendly and Cost-efficient

### Longer Lamp Life

With a long lamp life of 10,000 hours in eco-mode, the frequency of costly lamp replacements is reduced, saving you time and money.

### Light Optimiser

Save energy consumption and do your part for the environment with the eco-friendly Light Optimiser function. This feature automatically adjusts projection brightness according to image content brightness, giving you power and cost savings. This function can be turned on/off according to your preference.



## Flexible Positioning

### Effective Use of Space

Epson's short-throw projectors give you greater possibilities for all kinds of creative applications, even in areas with limited space. The projector can be mounted on a wall or set on a desktop and is effective on any surface, be it a flat wall, a whiteboard or even a chalkboard.

This means you can maximise the use of limited classroom or office space by turning any existing board into a projection surface.

Despite the limited space, bright and large projections are still easily achievable.



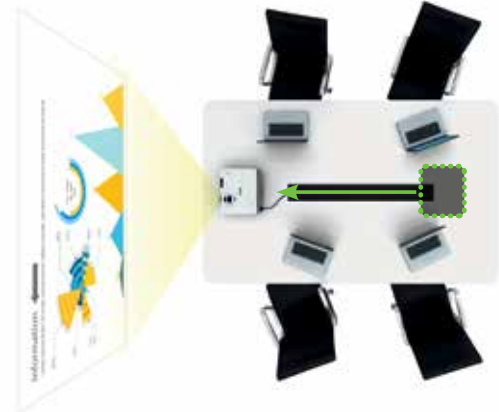
Projection on a whiteboard



Paper pinned onto the whiteboard when the projector is switched off



Projection in meeting rooms with space constraint



## Wide Range of Connectivity

### EasyMP Network Projection

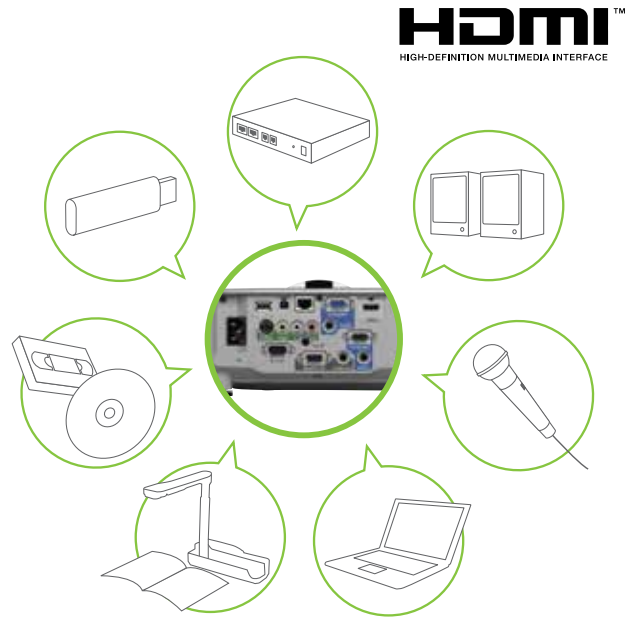
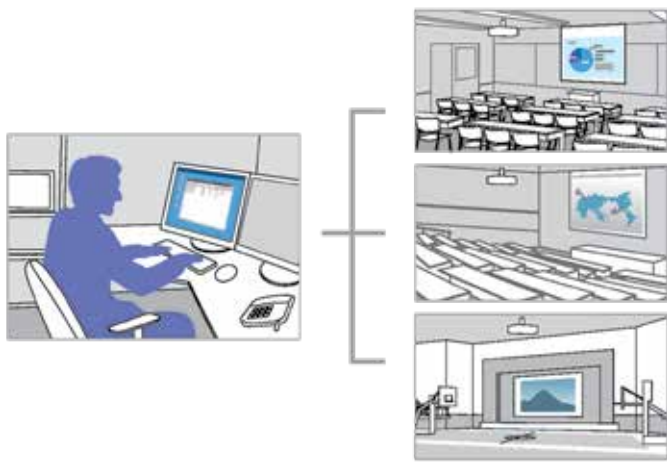
The EasyMP Network Projection enables users to configure both wired and wireless connections with high-quality audio output and conduct meetings simultaneously in up to four different locations.

### EasyMP Monitor

The EasyMP Monitor lets you efficiently monitor and configure multiple networked projectors from a single PC. You also have the ability to broadcast messages to all projectors for announcements or emergencies.

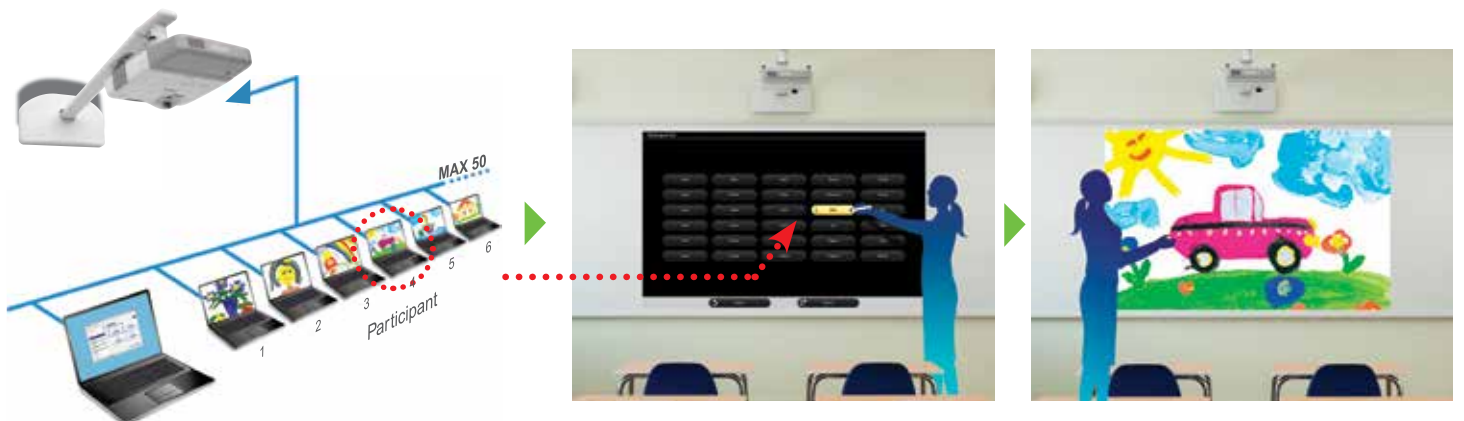
### Full Compatibility

Advanced connectivity features mean convenient and hassle-free projections of your presentations. With wide-ranging interfaces, these projectors not only correspond with multiple conventional analogue sources, they are also compatible with HDMI input.



### Multi-PC Projection

With the control of a host PC, up to 50 terminals can be connected via the multi-PC projection to a single projector. The host PC acts as a moderator, selecting media from up to four PCs or smart devices to be projected simultaneously. With the moderator function, you can maintain control and prevent tampering of what's projected on screen.



## Epson iProjection\*

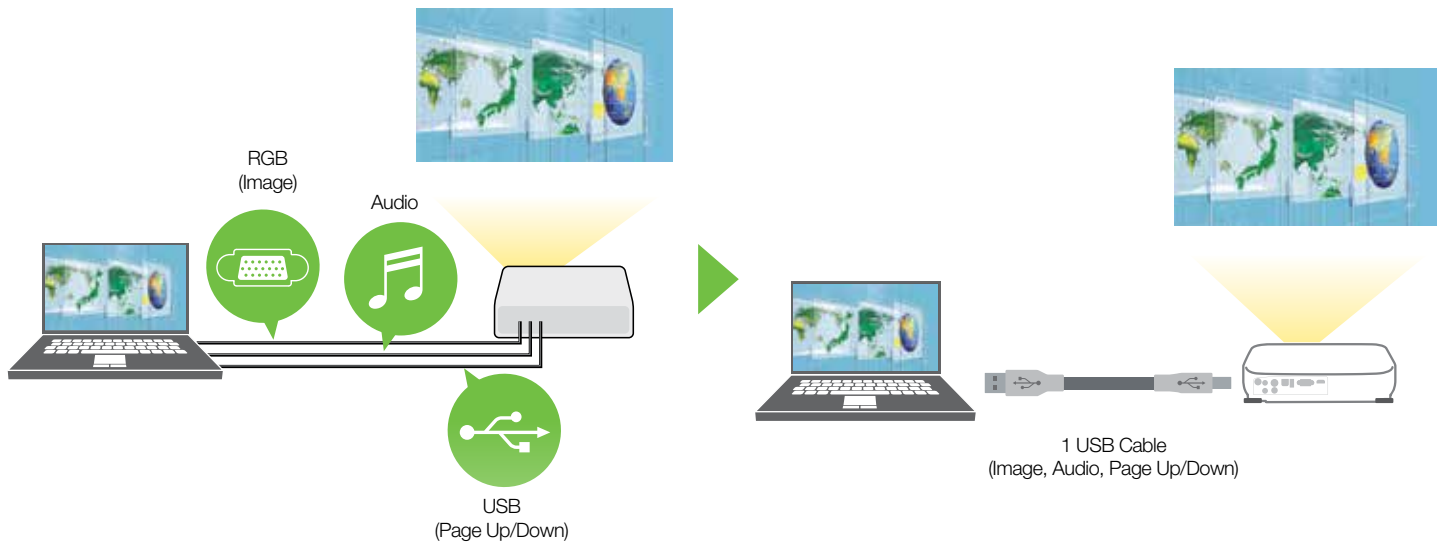
With the iProjection application for both iOS and Android, wireless projection from a smart device is made possible. This feature supports various files and allows you to present your smartphone contents with ease. iProjection also corresponds with your smartphone's touch-screen operations, such as flicking to turn pages and pinching to zoom in or out.



\* In iProjection, projector profile search, multi-screen display, distribution function, audio transfer, movie file transfer, interrupt connection disabling and encryption data transfer capabilities are not supported.

## USB 3-in-1 Display

Image projection, sound transmission and mouse operation can all be conveniently carried out with a single USB connection, eliminating the hassle of separate and messy cabling.



## Eco Features

- Uses just 0.28W of power in standby mode
- Projector optics employ lead-free lenses
- Unpainted plastic housing reduces the environment impact
- The flame retardants used in the plastic housing do not contain chlorine or bromine
- Light Optimiser function helps to reduce power consumption usage.

## Better Products for a Better Future™

For more information on Epson's environmental programmes, visit <http://global.epson.com/SR/environment>.

## PARTNERS IN PERFECTION

### Short-throw Wall Mount ELPMB45

Arm Length: 1,510mm  
Weight: approx. 11kg  
Maximum Load Capacity: 5.5kg  
Supported Projection Screen Size:  
66" - 110" (WXGA model)



### Wireless LAN Adaptor ELPAP10

Supports 802.11 b/g/n  
connection  
Compatible with all Epson  
wireless-enabled projectors





# SEE VIBRANT, REALISTIC COLOURS WITH HIGH COLOUR BRIGHTNESS.

## A New Specification

Projectors have always had their brightness rated only for white light. However, they may have very different colour brightness levels. The Colour Brightness specification provides a new way for buyers to compare the holistic performance (white and colour light brightness) of projectors to make a more informed decision.



**Epson**  
Colour Brightness 2600 Lumens  
White Brightness 2600 Lumens

**Competitor**  
Colour Brightness 750 Lumens  
White Brightness 2700 Lumens

## What is Colour Brightness?

As the term implies, Colour Brightness is a new international standard that states a projector's colour light output in lumens. It measures the brightness of a projector's red, green and blue light.

These are the measurements to look for:

- Colour Brightness - Colour Light Output**
- White Brightness - White Light Output**



**Epson**

**Competitor**

\* Compared against similarly-priced leading 1-chip DLP® business and education projectors based on NPD data from July 2011 through June 2012 (available from www.npd.com). Colour brightness (colour light output) measured in accordance with IDMS 15.4. Actual colour brightness will vary depending on actual usage conditions. 3LCD® is a registered trademark of Seiko Epson Corporation. DLP® is a registered trademark of Texas Instruments, Inc. and its use here does not imply any affiliation with or endorsement by them.

## Why Does Colour Brightness Matter?

Even if a projector has high white brightness, it's Colour Brightness could be as low as 1/3 of its white light brightness specification. With a projector that has high Colour Brightness, you'll see vibrant, realistic colours; but if Colour Brightness is low, colours can look dull and dark, skin tones can be reproduced poorly and important details can be lost.



**Epson**

**Competitor**

## How to Find a Projector's Colour Brightness?

1. Look for separate Colour Brightness and white brightness specification.
2. Projectors with similar white brightness levels can have vastly different and significantly lower Colour Brightness levels.
3. Many manufacturers may not want you to know their projectors are only 1/3 as bright when measuring colour.



[www.epson.com.my/colourbrightness](http://www.epson.com.my/colourbrightness)

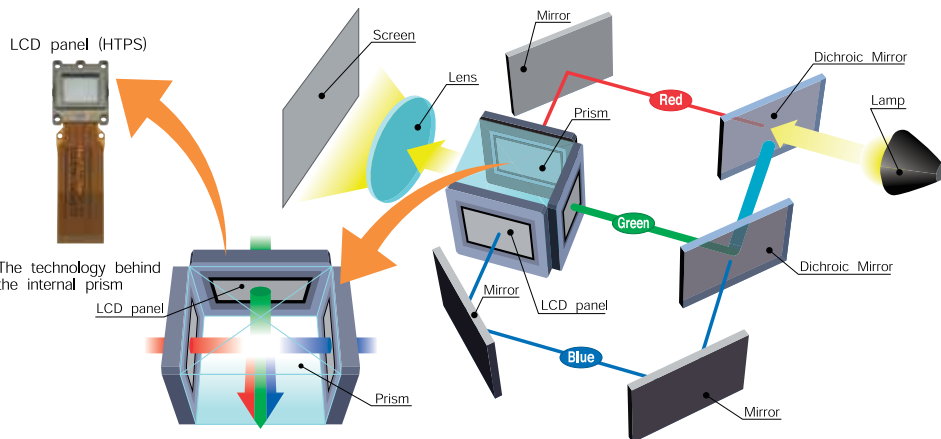
## EPSON 3LCD TECHNOLOGY – FOR BRIGHT, FAITHFUL COLOURS

3LCD projectors offer brighter and more accurate colours as they produce different shades and hues by filtering, then mixing beams of the three primary colours (red, green and blue).

In a 3LCD projector, white light is first split into the three beams of primary colours. Each beam is then filtered through its own LCD that will give each individual pixel of the image its exact brightness for each colour. The colour beams are then perfectly recombined in a prism before being projected out as a complete image.

This compares to projectors using single-chip technology that actually project individual colours sequentially by filtering their single white light beam through a colour wheel, and then relying on human colour perception to combine the colours in the viewers' minds.

As a result, 3LCD projectors also offer greater detail, smoother gradations, no "colour breakup" effect, are easier on viewers' eyes, and consume about 25% less power to achieve the same brightness compared to a single-chip projector using a lamp of the same wattage.



3LCD projector : RGB are projected at the same time, which makes the single composite image easy on the eyes.

• An independent test by projector review media ProjectorCentral.com in 2009 of about 800 projectors found that on average, 3LCD projectors use 25% less power than single-chip projectors.



[www.3lcd.com](http://www.3lcd.com)

<b>MODEL NUMBER</b>	<b>EB-535W</b>	
<b>Projection Technology</b>	RGB liquid crystal shutter projection system (3LCD)	
<b>Specifications of Main Parts</b>		
LCD	Size	0.59" with MLA (D8)
	Native Resolution	WXGA
Projection Lens	Type	No Optical Zoom / Focus (Manual)
	F-Number	1.60
	Focal Length	6.4mm
	Zoom Ratio	1.0 - 1.35 (Digital Zoom)
Lamp	Throw Ratio	0.48 - 0.65 (Wide - Tele)
	Type	215W UHE
	Life (Normal / Eco) <sup>1</sup>	5,000 hours / 10,000 hours
<b>Screen Size (Projected Distance)</b>		
Zoom: Wide / Zoom: Tele	53" - 116" [0.54 - 1.22 m] / 39" - 86" [0.54 - 1.22 m]	
<b>Brightness<sup>2</sup></b>		
White Light Output (Normal / Eco)	3,400lm / 1,900lm	
Colour Light Output (Normal)	3,400lm	
<b>Contrast Ratio</b>	16,000:1	
<b>Internal Speaker(s)</b>		
Sound Output	16W Monaural	
<b>Keystone Correction</b>		
Vertical / Horizontal	±15° / ±15°	
Auto Keystone Correction	N/A	
<b>Connectivity</b>		
Analog RGB Input	D-Sub 15Pin	2 (Blue)
	Composite	RCA x 1 (Yellow)
	S-Video	1
Digital Input	HDMI	1
Audio Input	RCA (White/Red)	Yes
	Stereo Mini Jack	2
USB Input	USB Type A	1 (for USB Memory, USB Document Camera, Wireless LAN, Firmware Update, Copy OSD Settings)
	USB Type B	1 (for USB Display, Mouse, K/B, Control, Firmware Update, Copy OSD Settings)
Control I/O	RS-232C	D-Sub 9pin x 1
	Interactive Sync	N/A
Video Output	Monitor Out	1
Audio Output	Stereo Mini Jack	1
Mic Input	Stereo Mini Jack	1
Network	Wired LAN	RJ45 x 1 (100Mbps)
	Wireless LAN	Optional (ELPAP10)
<b>Operating Temperature</b>	5 - 35 °C <41 - 95 °F>	
<b>Operating Altitude</b>	0 - 3,000 m <0 - 9,843 ft>	
<b>Direct Power On / Off</b>	Yes	
<b>Start-Up Period</b>	Less than 7 seconds, Warm-up period: 30 seconds	
<b>Cool Down Period</b>	Instant Off	
<b>Power Supply Voltage</b>	100 - 240 V AC ±10%, 50/60 Hz	
<b>Power Consumption (220 - 240V)</b>		
Lamp On (Normal / Eco)	298W / 221W	
Standby (Normal / Eco)	2.1W / 0.28W	
<b>Dimension Excluding Feet (D X W X H)</b>	314.5 x 344 x 94 mm	
<b>Weight</b>	3.7kg	
<b>Fan Noise (Normal / Eco)</b>	37dB / 29dB	
<b>Warranty</b>		
Main Unit	2 years carry in	
Lamp	1,000 hours or 1 year, whichever come first	

**Supplied Accessories**

Power Cable: 4.5m  
Remote Control: Yes, with Alkaline AA Battery  
Computer Cable (VGA Cable): 1.8 m (EB-535W)  
Software CD-ROM

**Optional Accessories**

Spare Lamp: ELPLP87  
Air Filter: ELPAF47  
Soft Carrying Case: ELPKS66  
Wireless LAN Unit: ELPAP10  
Quick Wireless Connection USB Key: ELPAP09  
ELPKC31 USB Extension Cable  
ELPMB45 Short Throw Wall Mount

EB-535W



<sup>1</sup> Lamp life will vary depending upon mode selected, environmental conditions and usage. Lamp brightness decreases over time.  
<sup>2</sup> Colour brightness (colour light output) and white brightness (white light output) will vary depending on usage conditions. Colour light output measured in accordance with IDMS 15:4; white light output measured in accordance with ISO 21118.

©2015 Epson Singapore Pte Ltd. All Rights Reserved. Reproduction in part or in whole, without the written permission from Epson, is strictly prohibited.

EPSON and EXCEED YOUR VISION are registered trademarks of Seiko Epson Corporation.

All other product names and other company names used herein are for identification purposes only and are the trademarks or registered trademarks of their respective owners.

Epson disclaims any and all rights in those marks. Projected images shown herein are simulations. The actual product design and contents may vary. Specifications are subject to change without notice and may vary between countries. Please check with local Epson offices for more information.

Apple, iPad and iPhone are trademarks of Apple Inc., registered in the U.S. and other countries. App Store is a service mark of Apple Inc.

Android is a trademark of Google Inc.

Dealer's Stamp

<b>MODEL NUMBER</b>	<b>EB-530</b>	
<b>Projection Technology</b>	RGB liquid crystal shutter projection system (3LCD)	
<b>Specifications of Main Parts</b>		
LCD	Size	0.55" with MLA (D8)
	Native Resolution	XGA
Projection Lens	Type	No Optical Zoom / Focus (Manual)
	F-Number	1.60
	Focal Length	6.4mm
	Zoom Ratio	1.0 - 1.35 (Digital Zoom)
	Throw Ratio	0.55 - 0.74 (Wide - Tele)
Lamp	Type	215W UHE
	Life (Normal / Eco) <sup>1</sup>	5,000 hours / 10,000 hours
<b>Screen Size (Projected Distance)</b>		
Zoom: Wide / Zoom: Tele	50" - 108" [0.54 - 1.22 m] / 37" - 80" [0.54 - 1.22 m]	
<b>Brightness<sup>2</sup></b>		
White Light Output (Normal / Eco)	3,200lm / 1,800lm	
Colour Light Output (Normal)	3,200lm	
<b>Contrast Ratio</b>	16,000:1	
<b>Internal Speaker(s)</b>		
Sound Output	16W Monaural	
<b>Keystone Correction</b>		
Vertical / Horizontal	±15° / ±15°	
<b>Connectivity</b>		
Analog RGB Input	D-Sub 15Pin	2 (Blue)
	Composite	RCA x 1 (Yellow)
	S-Video	1
Digital Input	HDMI	1
Audio Input	RCA (White/Red)	Yes
	Stereo Mini Jack	2
USB Input	USB Type A	1 (for USB Memory, USB Document Camera, Wireless LAN, Firmware Update, Copy OSD Settings)
	USB Type B	1 (for USB Display, Mouse, K/B, Control, Firmware Update, Copy OSD Settings)
Control I/O	RS-232C	D-Sub 9pin x 1
Video Output	Monitor Out	1
Audio Output	Stereo Mini Jack	1
Mic Input	Stereo Mini Jack	1
Network	Wired LAN	RJ45 x 1 (100Mbps)
	Wireless LAN	Optional (ELPAP10)
<b>Operating Temperature</b>	5 - 35 °C <41 - 95 °F>	
<b>Operating Altitude</b>	0 - 3,000 m <0 - 9,843 ft>	
<b>Direct Power On / Off</b>	Yes	
<b>Start-Up Period</b>	Less than 7 seconds, Warm-up period: 30 seconds	
<b>Cool Down Period</b>	Instant Off	
<b>Power Supply Voltage</b>	100 - 240 V AC ±10%, 50/60 Hz	
<b>Power Consumption (220 - 240V)</b>		
Lamp On (Normal / Eco)	298W / 221W	
Standby (Normal / Eco)	2.1W / 0.28W	
<b>Dimension Excluding Feet (D X W X H)</b>	314.5 x 344 x 94 mm	
<b>Weight</b>	3.7kg	
<b>Fan Noise (Normal / Eco)</b>	37dB / 29dB	
<b>Warranty</b>		
Main Unit	2 years carry in	
Lamp	1,000 hours or 1 year, whichever come first	

**Supplied Accessories**

Power Cable: 4.5m  
Remote Control: Yes, with Alkaline AA Battery  
Computer Cable (VGA Cable): 1.8 m  
Software CD-ROM

**Optional Accessories**

Spare Lamp: ELPLP87  
Air Filter: ELPAF47  
Soft Carrying Case: ELPKS66  
Wireless LAN Unit: ELPAP10  
Quick Wireless Connection USB Key: ELPAP09  
ELPMB45 Short Throw Wall Mount

EB-530W



<sup>1</sup> Lamp life will vary depending upon mode selected, environmental conditions and usage. Lamp brightness decreases over time.

<sup>2</sup> Colour brightness (colour light output) and white brightness (white light output) will vary depending on usage conditions. Colour light output measured in accordance with DMS 15:4; white light output measured in accordance with ISO 21118.

©2015 Epson Singapore Pte Ltd. All Rights Reserved. Reproduction in part or in whole, without the written permission from Epson, is strictly prohibited.

EPSON and EXCEED YOUR VISION are registered trademarks of Seiko Epson Corporation.

All other product names and other company names used herein are for identification purposes only and are the trademarks or registered trademarks of their respective owners.

Epson disclaims any and all rights in those marks. Projected images shown herein are simulations. The actual product design and contents may vary. Specifications are subject to change without notice and may vary between countries. Please check with local Epson offices for more information.

Apple, iPad and iPhone are trademarks of Apple Inc., registered in the U.S. and other countries. App Store is a service mark of Apple Inc.

Android is a trademark of Google Inc.

Dealer's Stamp

Information correct at time of printing  
Printed April 2018



To find out more, visit [www.epson.com.my/projectors](http://www.epson.com.my/projectors) or call **1800-81-7349 (Toll-Free)**.

Join us EpsonMalaysia

Check for your warranty terms at [www.epson.com.my/warrantytnc](http://www.epson.com.my/warrantytnc)