

Vertical Split Case



Features & Benefits

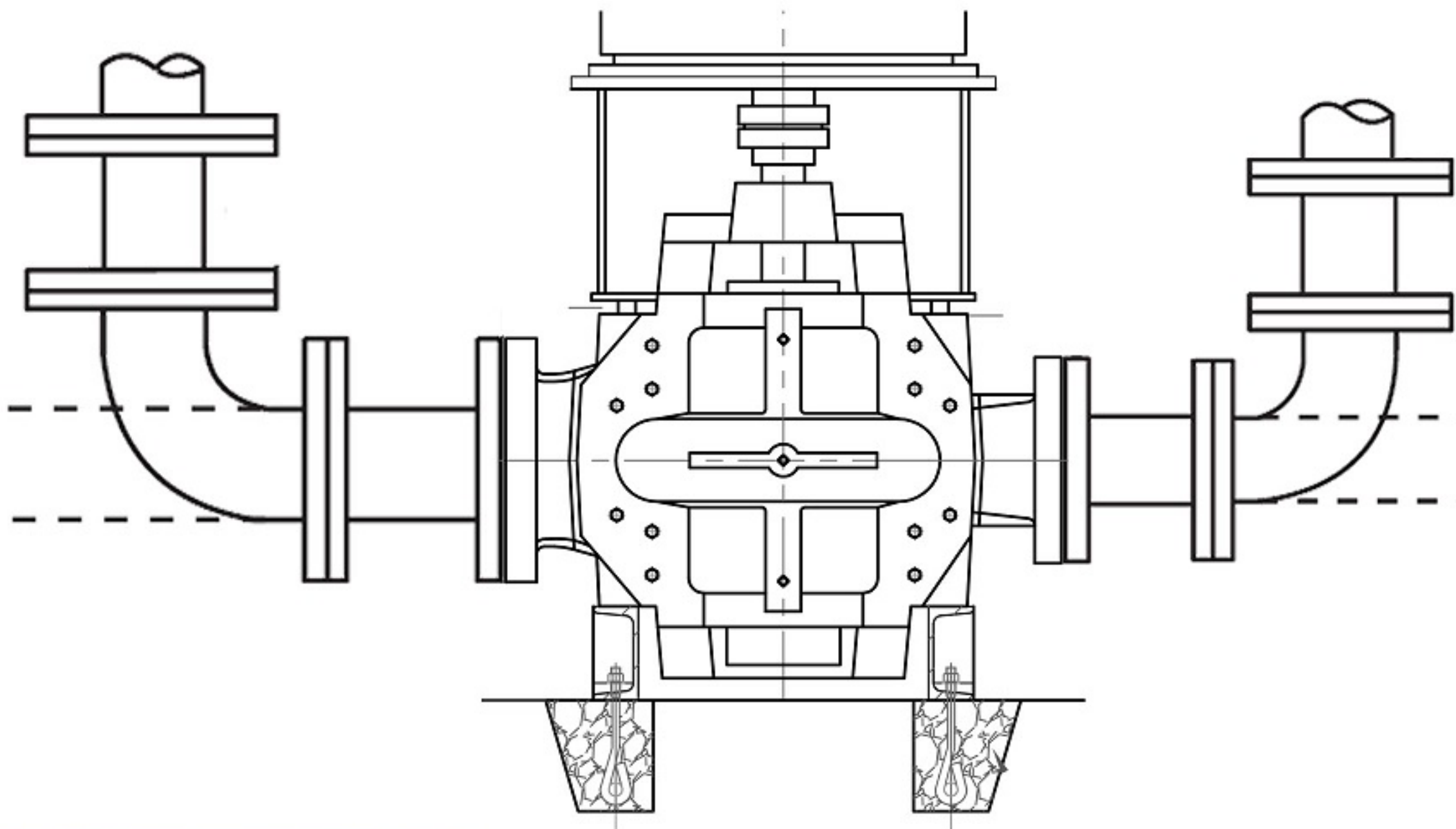
The vertical split case pumps provide the same reliable performance as the horizontal split case pumps. Its vertical design occupies less space than horizontal pumps, making installation easier, especially in small or restricted areas. The improved design also makes it easier to perform routine maintenance.

Applications

- ▶ Fire-fighting systems
- ▶ Water supply systems
- ▶ Industrial circulating systems
- ▶ Water systems for industrial uses
- ▶ Warm water heating, chilled & cooling water systems

Pump Size	DN 80 up to 900 mm
Capacities	up to 1500 l/s
Heads	up to 200 Meter
Speed	1450 - 2900 rpm
Motor Rating	up to 3400 kW
Operating Temperature	up to 105°C*

* The materials of pumps differ according to the type of pumped liquid, operating temperature and pressure.



Performance Range

