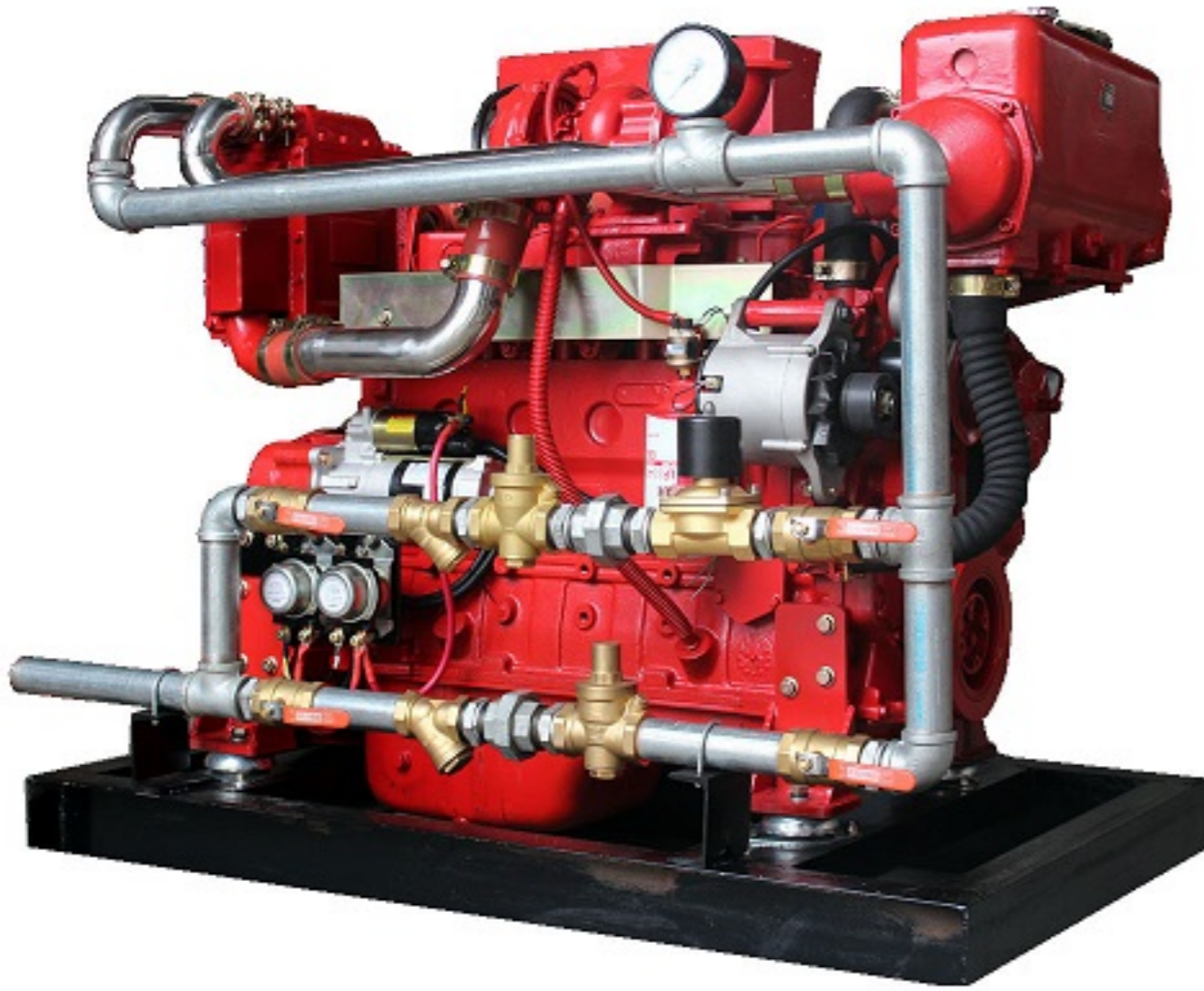


Heat Exchanger Diesel Engine



Applications

- ▶ Truck
- ▶ Generator
- ▶ Fire Fighting
- ▶ Engineering Machinery

Specifications

Type	Heat Exchanger Type
Rated HP	up to 450 HP
Rated Speed	up to 3000 rpm
Type of Lubrication	Pressure & Splash
Starting Method	Electric Starting
Standard Equipment	PTO Shaft, Silencer, Air Filter, Radiator, Control Panel

Features & Benefits

- ▶ Low Noise
- ▶ Quick Start Ups
- ▶ Pollution Free Design
- ▶ Highly Reliable Engine
- ▶ Large Capacity, high speed flyweigh governor

Overview

B.G.Reich's longstanding devotion to research and development has earned them a growing reputation worldwide as a manufacturer of top quality diesel engines. One of B.G.Reich's major concerns has always been the development of a more compact, fuel efficient, and cleaner exhaust engine. Their long technical experience, untiring research and deep concern for the environment led to the creation of the water-cooled diesel engine series.