



FEATURE HIGHLIGHTS

Centralized Management

- RG-MACC-BASE can conduct configuration and manage of all AP, Switches and Gateway in one cloud management platform

Multi-tenancy Management

- Perfection for Managed Service Business, integrated with multi-tenant management feature

Comprehensive Wireless Site Survey Tool (Free Cloud Services)

- An easy-to-use simulation tool to generate wireless heat-map according to floor plan imported
- Support obstacle material and wall simulation

Advanced Troubleshooting

- Web CLI access to managed devices for complex troubleshooting scenarios

Marketing WiFi & Local Based Services

- Optional integrated Marketing WiFi module that provides user's experience

Zero-provisioning

- With plug-n-play, RG-MACC-BASE allows tenants to provision new Access Point in their existing network automatically without manual intervention

Ruijie RG-MACC-BASE Datasheet

The **Ruijie RG-MACC (Managed @ Cloud Center)** is a revolutionary cloud management platform which supports unified management and configuration of APs, switches and gateway devices¹, as well as value-added marketing features, site survey, etc. The RG-MACC is designed for education, retail chain stores, shopping malls, hotels, transportation, small and medium-sized enterprises, network operators and settings alike. The RG-MACC is consisted of various feature modules, such as management, marketing and AAA (authentication, authorization and accounting), site survey planner, diagnostic tools, etc. The platform significantly reduces the total cost of investment while ensuring high usability of the RG-MACC.

The RG-MACC-BASE is a key component of the RG-MACC, supports device planning, configuration, control, operation and maintenance on cloud, which provides an easy solution to centrally manage all the Wi-Fi devices. Traditionally, the AC implements close coupling for AP management, which is more suitable for large-scale AP control within the LAN. On the other hand, the RG-MACC-BASE platform deploys loose coupling to completely separate management and data for a better wireless environment. Teaming up with Ruijie AP Series, the RG-MACC-BASE does not only achieve AP management with ease, but also acts like a physical AC. The cloud platform supports wireless control features such as auto power and channel adjustment, RF management and optimization, L2/L3 roaming and beyond.

An increasing number of companies plan to spend more of their budget with managed service providers (MSP) in the whether an organization is experiencing exponential growth or it's so small that it doesn't have an IT staff, turning over the wired/wireless network to a trusted partner can translate into better service, sometimes at a lower cost than managing it in-house. The easy-to-use multi-tenancy feature powered by RG-MACC-BASE is designed to empower MSP's intend of building up private cloud option to cater the need from its subscribers. RG-MACC-BASE best-in-class multi-tenancy architecture accelerate MSP in rolling out from small deployment up to massive multisite or distributed site deployment in shortest time frame possible.

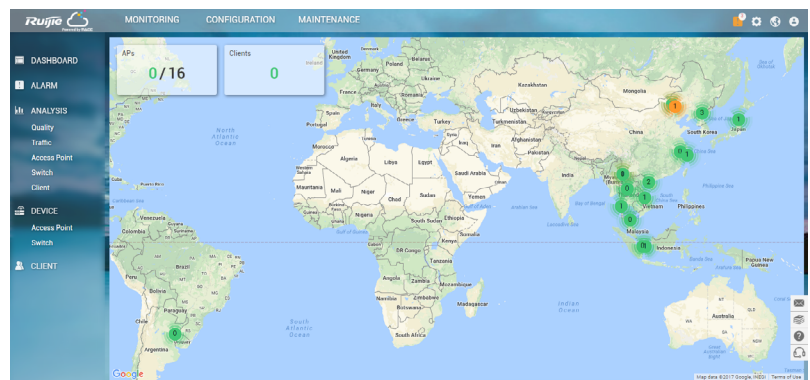


Figure 1: RG-MACC-BASE Main Monitoring Page

Note:
¹ Future release support

Product Features

Cloud Configuration

Flexible Device Group Architecture

The MACC-BASE manages devices based on group, and it can create group and sub groups, with the hierarchical group configuration, it makes customers manage their network devices more easy and clear.

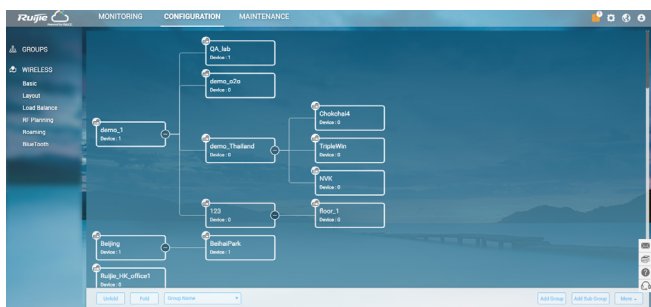


Figure 2: RG-MACC-BASE Group Configuration

Intuitive Deployment on Map

The MACC-BASE achieves location and RF planning for power and channel auto organization and optimization. For projects of any sizes, careful deployment planning always plays a critical role. It provides clear and easy guidance for any technical staff to carry out the installation work. The MACC-BASE supports deployment design based on map, making it more intuitive and easier to master.

Basic

Group Name :

Time Zone :

Scenario :

Bind Location :

The map shows a geographical view of East Asia, including parts of Russia, Mongolia, China, South Korea, Japan, India, Thailand, United States, Mexico, and Canada. A red location pin is placed in the region of Japan/South Korea. The map data is attributed to Google and is from 2017.

Figure 3: RG-MACC-BASE Map-based Deployment Page

Seamless Roaming

The platform supports seamless L2/L3 roaming for local APs. When roaming is enabled, any end device can smoothly and seamlessly switch among multiple wireless networks. No reconnection or extra configuration is required.

Simplified Multi-tenant RBAC (Role-based Access Control)

The platform supports flexible multi-tenanted role-based access control. MSP can easily create and assigned designated user to managed and access to its assigned tenant.

The screenshot shows an 'Account List' table with the following data:

Username	Role	Group	Full Name	Expired	Mobile	Email	Action
network_admin@xyz.com	Admin	MIFI_LAP	network_admin@xyz.com	2099-01-01 08:00	112113114	network_admin@xyz.com	[Edit] [Delete]
employee@xyz.com	Employee	MIFI_LAP	employee@xyz.com	2099-01-01 08:00	123456	employee@xyz.com	[Edit] [Delete]
read_only@xyz.com	Guest	MIFI_LAP	read_only@xyz.com	2099-01-01 08:00	11222333	read_only@xyz.com	[Edit] [Delete]

Page 1 of 1, 10 items, 3 in total.

Figure 4: RG-MACC-BASE Multi-tenant RBAC

Smart Status Monitoring

Visualize and monitor all devices and user status in a unified manner. You can check and monitor global group status in real time, including devices, clients, traffic, and alarms, etc. Other multi-dimensional network quality details like 2.4G/5G channel usage, 2.4G/5G statistics, RSSI statistics and AP load over last 24 hours are also available for easy reference.

Just by scanning through the groups, devices and clients details, you can quickly master if the whole system is operating normally.

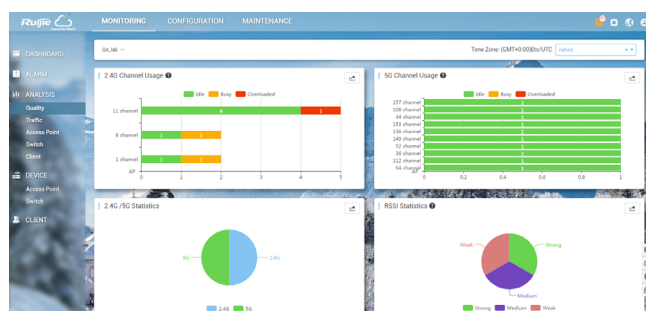
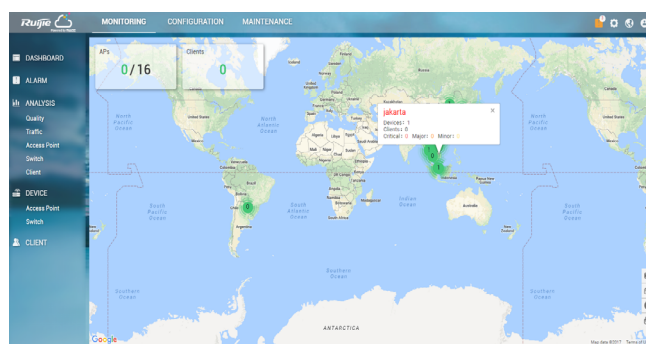


Figure 5: RG-MACC-BASE Monitoring Page

Master Real-time Online User Experience

Analyze operating status of the system from the end user perspective. The MACC-BASE also enables you to find out the user experience at each hotspot, providing details of signal quality during various time slots and overall experience indicators.

Operating Status / Offline Alerts and Other Warnings

The MACC-BASE shows the current alert messages in a list. Trace the cause of each alert with ease based on warning level, content and time. You can also filter the alerts in terms of serial number and time range.

Alert Setup: The MACC-BASE offers a wide range of alerts, you can enable only those you need and receive notifications of key alerts anytime, anywhere via email.

Advanced Troubleshooting

The MACC-BASE shows the Web CLI access. Debugging command over management portal complex troubleshooting environment without accessing to individual managed devices one by one.

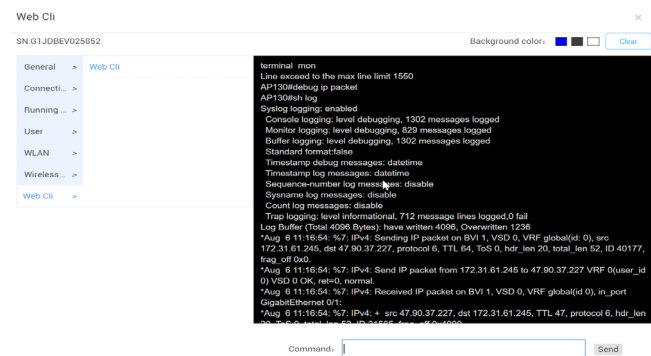


Figure 6: Advanced Troubleshooting on RG-MACC-BASE

Cloud Operation and Maintenance

Diversified Data Reports

The MACC-BASE can generate data reports of various systems. For example, you can export a report on accumulated daily user statistics, daily user traffic details, activity analysis and device analysis, etc. You can easily create a report of your own for periodic work summary.

Centralized Upgrade Control

With MACC-BASE, you can easily manage hardware version and upgrade devices in batch. Select devices that need to be upgraded, click the “Upgrade” button and that’s it. You can also observe the whole executing process and read device logs for upgrade version history in full details.

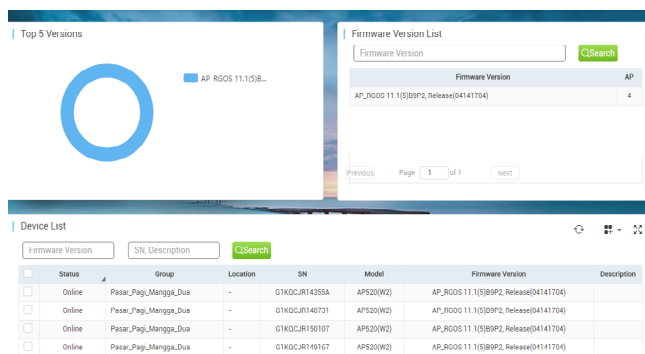


Figure 7: Centralized Upgrade on RG-MACC-BASE

Management with Ease

The MACC-BASE platform supports multiple tenants. Each can manage several levels of sub-accounts. Various degrees of management and viewing privileges can hence be granted to different users, enhancing cloud control usability.

Technical Specifications

Feature List

	RG-MACC-BASE
Deployment Mode:	
(i) Single-Tenant (suitable for local premises deployment)	✓
(ii) Multi-Tenant (suitable for private/ cloud deployment)	✓
Planning:	
(i) Location Planning (Google Map)	✓
(ii) AP Layout Planning	✓
(iii) Auto RF Planning	✓
(iv) Power & Channel Optimization	✓
(v) WLAN Site Survey Planner (RG-MACC-SSP)	✓
Configuration:	
(i) SSID Configuration	✓
(ii) Radio Configuration	✓
(iii) Web Authentication Configuration	✓
(iv) 802.1X Authentication Configuration	✓
(v) Wireless Location Configuration	✓
(vi) Wireless Security Configuration	✓
(vii) Rate Limit Configuration	✓
(viii) Blacklist/Whitelist Configuration	✓
(ix) Bluetooth Configuration	✓
Load Balancing	
(i) AP load balancing	✓
(ii) Band Steering	✓
Wireless Roaming:	
(i) Layer 2 Roaming	✓
(ii) Layer 3 Roaming	✓
Monitoring:	
(i) Global View (Dashboard)	✓
(ii) User Overview	✓
(iii) AP Overview	✓
(iv) Switch Overview	✓
Maintenance:	
(i) Firmware Upgrade	✓
(ii) Server Manual Upgrade	✓
(iii) Server Online Upgrade	✓
(iv) Reports	✓
(v) Logs	✓
(vi) Disk Monitoring & Automated Cleanup	✓
(vii) Database Backup	✓
Alarm:	
(i) Alarm Customization	✓
(ii) Alarm Pushes (Email)	✓
System Management:	
(i) Tenant Management	✓
(ii) Role-based Privilege Management (Account Classification)	✓
(iii) License Management	✓
(iv) Account Language Support	✓
Support	
(i) Online Document Support	✓
(ii) Online 24-hour Support	✓

Supported Models

Supporting Ruijie Hardware Models

Product Type	Product Series	Hardware Model
AP (RGOS AP)	AP130 Series	AP130(W2), AP130(L), AP130-W
	AP500 Series	AP520-I(G2), AP520(W2), AP520(BT), AP520(DA), AP530-I V2
	AP700 Series	AP740-I, AP720-I, AP740-I(C)
	AP630 Series	AP630(IDA) , AP630(IODA), AP630(CD)
	MTFI Series	RG-MTFI-M520(IZEAA), RG-MTFI-M520(ILEAA)
Switch	RG-S2910	RG-S2910-24GT4SFP-UP-H
	RG-S2910C	RG-S2910C-24GT2XS-HP-E
	RG-S2928G	RG-S2928G-E V3.0

System Requirements

RG-MACC-BASE System Requirements

Scale	Recommended System Specifications				
Number of APs ²	CPU	RAM	HDD	Internet Bandwidth (minimum)	Number of Servers
< 1,000	4	8 GB	256 GB	1MB	1
1,000 to 4,000	8	16 GB	512 GB	2MB	1
4,000 to 10,000	8	16 GB	512 GB	4MB	2
Above 10,000	If cluster solution is required, please contact Ruijie local sales representative for details				

Ordering Information

Model	Description
RG-MACC-BASE	Ruijie MACC Solution Framework Base Module - providing cloud-based device planning, monitoring, troubleshooting and reporting, multi-tenant edition for Managed Service Provider (MSP) (including: 3-year software support service with software upgrade, patches and online technical support service)
RG-MACC-BASE License	
RG-MACC-BASE-LIC-25	RG-MACC-BASE Licenses for 25 registered devices
RG-MACC-BASE-LIC-50	RG-MACC-BASE Licenses for 50 registered devices
RG-MACC-BASE-LIC-100	RG-MACC-BASE Licenses for 100 registered devices
RG-MACC-BASE-LIC-500	RG-MACC-BASE Licenses for 500 registered devices
RG-MACC-BASE-LIC-1K	RG-MACC-BASE Licenses for 1K registered devices

Note:

² Assumption: 1 AP with 30 concurrent clients

Model	Description
RG-MACC-BASE-LIC-5K	RG-MACC-BASE Licenses for 5K registered devices
RG-MACC-BASE-LIC-10K	RG-MACC-BASE Licenses for 10K registered devices
RG-MACC Software Support Service	
RG-MACC-SSS-Service	RG-MACC Annual Software Support Service (Including software upgrade, patches and online technical support service)
RG-MACC 3rd Party Integration & Development Service	
RG-MACC-INT-Service	RG-MACC 3 rd party integration & development service



Innovation · Simplicity · Experience

For further information, please visit our website: <http://www.ruijienetworks.com>

Copyright © 2017 Ruijie Networks Co., Ltd. All rights reserved. Ruijie reserves the rights to change, modify, transfer, or otherwise revise this publication without notice, and the most current version of the publication shall be applicable. If there is any inconsistency or ambiguity between this datasheet and the website, the information on the website shall prevail.

