

The Original molybden test

## Avesta Classic Moly-Drop test 960

### Features

Avesta Moly-Drop test 960 is an easy to use chemical test that helps differentiate 304 grade stainless steel from 316 grade.

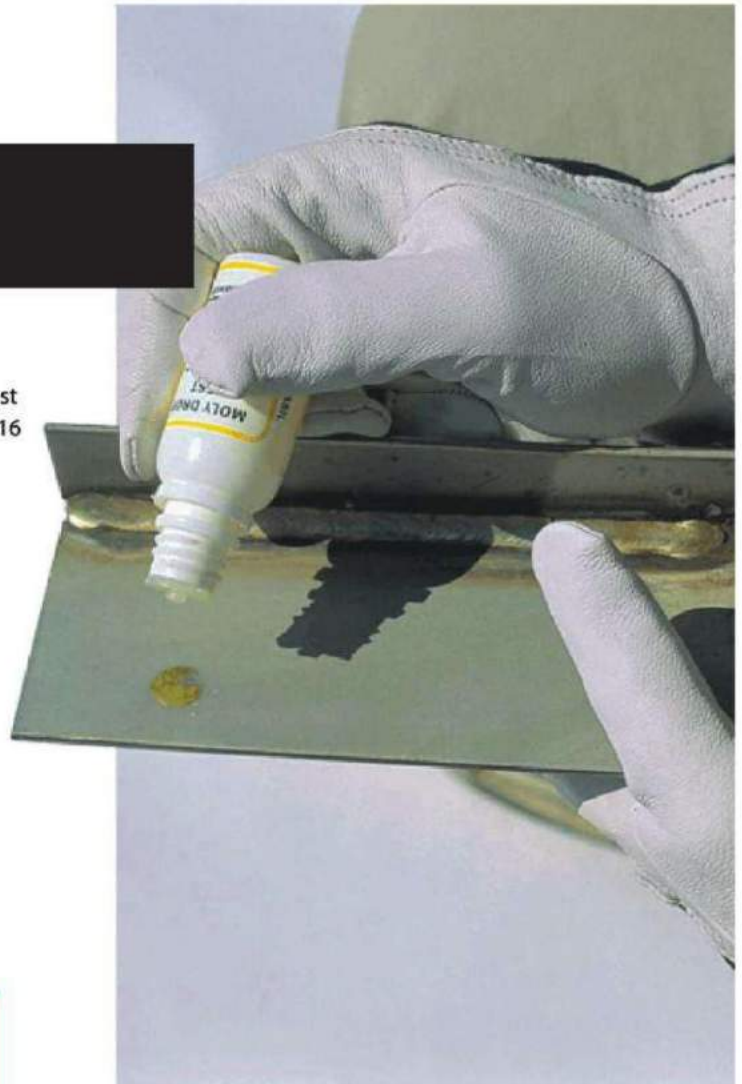
With this simple chemical test you can check if your stock piece or scrap of stainless steel is 304 or 316. The test will identify the grade within 5-10 minutes through a colour change.

### General characteristics

Can be used on stainless steel 300 series material to test presence of Molybdenum to differentiate grade 304 (no moly) from 316 (with moly).

### Chemical properties

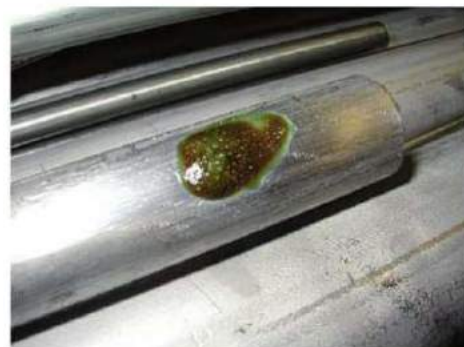
Composition:	Hydrochloric acid (HCl)
Form:	Yellow liquid
Density:	1.3 kg/lit
pH:	0



Identifying stainless steel grade with Avesta Moly-Drop test 960.



Testing 304 (EN 1.4301)



Testing 316 (EN 1.4436)