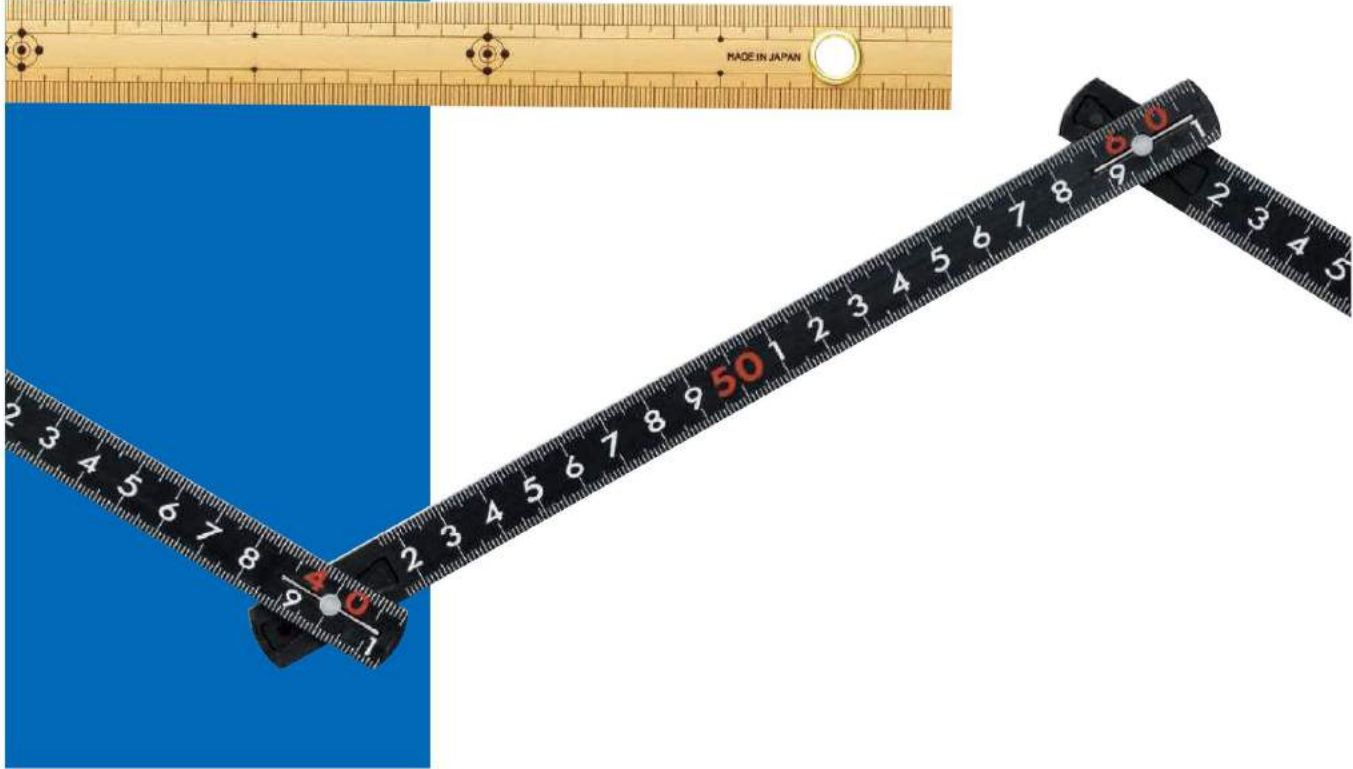


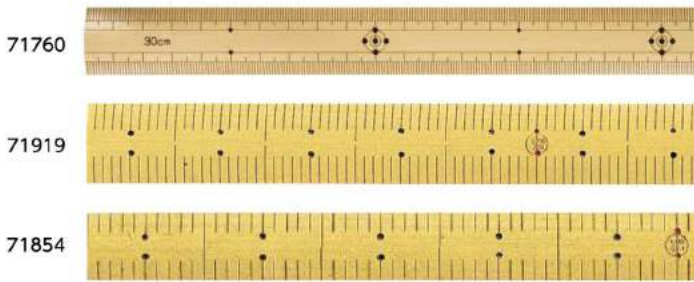


# 4. Resin Folding Rules/ Bamboo Rules



- Packaging Shrink package Box Vinyl package + header card Card No package  
 Sleeve package Bag Clear package Vinyl package

## Bamboo Rule



Item Code	Description	LengthxWidthxThickness (mm)	Weight (g)	JAN Code	Packing Unit	Package
71760	30 cm with Hole	300x23x4	22		10	
71765	50 cm with Hole	500x23x4	42			
71773	1 m with Hole	1,000x28x4	91			
71897	Kane 1 shaku	303x23x3	17			
71900	Kane 2 shaku	606x23x4	45			
71919	Kane 3 shaku	909x28x5	88			
71854	Kujira 2 shaku for Kimono	758x23x4	57			

Refer to P. 2 about the shaku scale

- JIS JIS mark With red numbers cm/shaku (Upper side for Forti metric / Lower side for Back) shaku With magnet Vial with luminous sheet Thermometer Double-sided tape Letters in Japanese With stopper Oil Glass lens With edge  
 Japanese zodiac signs With battery shaku/cm (Upper side for Forti shaku / Lower side for Back) metric With non-slip pad Thermometer/Hygrometer Hygrometer With long tool Letters in English With direction arrow With grid scale Plastic lens

### Features

- Made of bamboo to fit in the hands
- 1 mm pitch for both upper and lower graduations (71760)



### Use

- Kane-shaku: For building work
- Kujira-shaku: For Japanese traditional dressmaking

### Specifications

Length	Less than 50 cm; ±0.5 mm
Tolerance	1 m; ±1 mm
Material	Bamboo

### About the Graduations

#### Kane-shaku

The shaku of Kane-shaku was named after the brass-made scale in the Edo era. 1 shaku is equivalent to 8 sun of Kujira-shaku. (= 30.3 cm)

#### Kujira-shaku

It was originally made out of a barb of whale (Kujira). It is used for dressmaking. 1 shaku of Kujira shaku is defined as 1 shaku 2 sun 5 bu Kane - shaku.

- Carpenter's Squares
- Stainless Steel Rules / Machine Scale
- Aluminum Rules
- Resin Folding Rules / Bamboo Rules
- Squares / Protractors
- Vernier Caliper / Micrometers
- Tape Measures
- Surveying Products
- Scales
- Levels
- Laser / Optical Equipment
- Ballpen / Traillines / Pencilholders
- Circular Saw Guides
- Construction Tools
- Industrial Tools
- Thermometer / Hygrometer / Barometer
- Outdoor Products
- Magnifying Glasses
- Drawing Tools
- Magnets

## Fiberglass Folding Rule



Item Code	Description	Body Size (mm)	Weight (g)	JAN Code	Packing Unit	Package
78625	5-folding 1 m Black	1,000x15x3.2	67	4 960910 786257	5	
78605	5-folding 1 m	1,000x15x3.2	67	4 960910 786059	5	
78606	10-folding 1 m	1,000x13x2.2	44	4 960910 786066	10	
78833	10-folding 2 m	2,000x15x3.2	131	4 960910 788336	10	
78633	5-folding 1 m Black in Bulk	1,000x15x3.2	67	4 960910 786332	20	
78705	5-folding 1 m in Bulk	1,000x15x3.2	67	4 960910 787056	20	
78708	10-folding 1 m in Bulk	1,000x13x2.2	44	4 960910 787087	10	
78841	10-folding 2 m in Bulk	2,000x15x3.2	131	4 960910 788411	10	
78623	5-folding 1 m/shaku	1,000x15x3.2	67	4 960910 786233	5	
78624	5-folding 1 m/shaku in Bulk	1,000x15x3.2	67	4 960910 786240	20	

Refer to P. 2 about the shaku scale

JIS mark With red numbers cm/shaku (Upper side for front metric / Lower side for back shaku) With magnet Vial with luminous sheet Thermometer Double-sided tape Letters in Japanese With stopper Oil Glass lens With edge  
 Japanese zodiac signs With battery shaku/cm (Upper side for front shaku / Lower side for back metric) With non-slip pad Thermometer/Hygrometer Hygrometer With large hole Letters in English With direction arrow With grid scale Plastic lens

### Features

- Highly durable, as moving parts can withstand folding 25,000 times with little wear and no reduction in performance
- Glass fiber has been combined into nylon resin to provide high rigidity and superior straightness



- Joints are wire-reinforced to stay securely fastened and be resistant to breaking or bending



- Nylon resin construction makes it resistant to rust



- Easy-to-read, large numbers
- Does not conduct electricity well, and will not conduct electricity up to about 11,000 V



- Click stops at 90 and 180 degrees



- Folds up for portability

### Use

- For measuring length, drawing lines and boring rod measurement

### Specifications

Length	0 - 1,000 mm: ±1.0 mm
Tolerance	1,001 - 2,000 mm: ±1.4 mm
Material	Nylon resin with fiberglass