

HYDRAULIC BOLTING



▶ **TITAN T-Series** hydraulic torque wrenches are designed to be stronger and longer-lasting than any other similar products on the market.



▶ The **LP Series** offers a low nose and flat design for extremely tight application accessibility without sacrificing power.

HOW TO SELECT YOUR HYDRAULIC BOLTING TOOL?

STEP 1 AND 2

Torque

▶ Select the power head cylinder or T tool depending on torque required.



Application

▶ Select the right link depending on the power head cylinder chosen and the hexagonal bolt size required.



OR



STEP 3

Pump

▶ Select the right pump depending on the torque required and the frequency of use.



STEP 4

Hose / Accessories


▶ Select the hose length and accessories depending on the application.




HYDRAULIC BOLTING

These charts will help you to define your selection depending on the torque and hexagonal size needed for your application


LP CYLINDER TORQUE CHART

LP	MODEL	TORQUE	ft.lbs	268	504	1075	1826	2360	3451	5250	6905	7125	14729	31760	43000	WEIGHT	
			Nm	363	683	1458	2476	3200	4680	7119	9362	9662	19970	43060	58308	lb	kg
	LP2															3,45	1,56
	LP4															5,8	2,63
	LP8															10,2	4,62
	LP16															15,5	7,03
	LP32															18	8,16
	LP48															19,4	8,8

LP LINKS HEX NUT CHART



LINKS	MODEL	HEX NUT SIZE	in.	3/4"	1"	1-1/4"	1-13/16"	2-3/16"	2-3/8"	3-1/8"	3-7/8"	4-1/2"	4-11/16"	6-1/8"	WEIGHT	
			mm	19	25	32	46	56	60	80	98	115	119	160	lb	kg
	2LPXX-YYY														2,20 - 3,50	1,00 - 1,58
	4LPXX-YYY														5,25 - 7,50	2,38 - 3,40
	8LPXX-YYY														11,40 - 14,10	5,17 - 6,39
	16LPXX-YYY														19,70 - 27,60	8,93 - 12,51
	32LPXX-YYY														32,00 - 99,00	14,50 - 44,90
	48LPXX-YYY														35,00 - 99,00	15,87 - 44,90

T SERIES TORQUE CHART

T series	MODEL	SQUARE DRIVE	TORQUE	ft.lbs	197	468	816	1168	1304	1662	2971	3726	3800	4750	5300	7818	10368	22264	WEIGHT		
				Nm	267	635	1107	1584	1767	2254	4026	5052	7601	10932	7182	10593	14049	30168	lb	kg	
	T1	3/4"																		5	2,7
	T3	1"																		10	4,54
	T5	1-1/2"																		17	7,71
	T8	1-3/4"																		25	11,34
	T10	1-1/2"																		30	13,61
	T25	2-1/2"																		70	31,75

TOOLS PUMP RECOMMENDATION FOR OPTIMAL USE

EXE-Serie		T1	T3	T5	T8	T10	T25	LP2	LP4	LP8	LP16	LP32	LP48
	EXE-MINI	✓	✓					✓	✓				
	EXE-MAX	✓	✓	✓	✓	✓		✓	✓	✓	✓		
	EXE-MAX SUPER		✓	✓	✓	✓	✓		✓	✓	✓	✓	✓

EXA-Serie		T1	T3	T5	T8	T10	T25	LP2	LP4	LP8	LP16	LP32	LP48
	EXA-MINI	✓	✓					✓	✓				
	EXA-MAX	✓	✓	✓	✓	✓	✓	✓	✓	✓	✓	✓	✓



T SERIES: Square drive hydraulic torque wrenches

Your industrial bolting applications require a hydraulic torque wrench that's powerful enough to consistently deliver accurate performance, even under the toughest conditions. TITAN T-Series hydraulic torque wrenches are designed to be stronger and longer-lasting than any other similar product on the market.

The Titan T-Series torque wrenches are powerful, accurate, durable, and efficient. Every Titan hydraulic torque wrench is cycle tested under load and then calibrated. Each hydraulic torque wrench has a calibration certificate with traceability to N.I.S.T. All testing equipment includes a calibration by NVLAP Accredited Calibration Laboratory.

The T Series Benefits

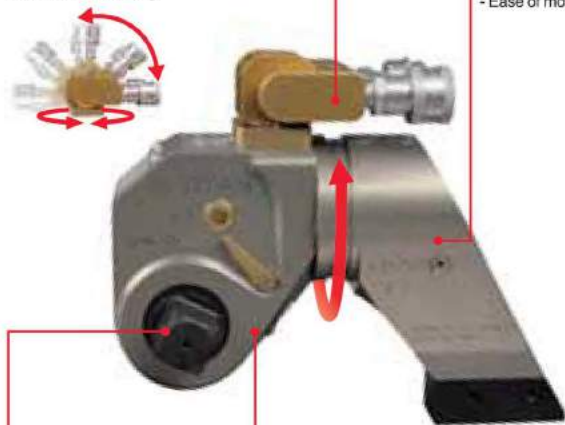
- Multi Axis Tru-Swivel
- 360° Rotating reaction arm
- Excellent power to weight ratio
- Corrosion resistance

PATENTED MULTI AXIS THRU-SWIVEL

- Allows greater hose mobility
- Greater range of hose position
- Prevent hose kinking

360° ROTATING REACTION ARM

- Multi-axis design
- Ease of motion



VERSATILE SQUARE DRIVE

- Quick change system
- 3 square drive sizes available

CORROSION RESISTANCE

- Hard coat anodized finish



T series

SUPERIOR BOLTING SOLUTIONS ROBUST, POWERFUL AND ACCURATE

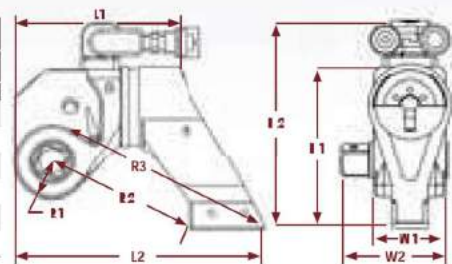


FEATURES

- Certified torque accuracy of +/-3%
- Robust ratchet mechanism assures High repeatability
- Crafted from the highest quality aircraft-grade materials for ultimate strength and durability (AQ Grade 7075-T6 Light Alloy)
- Hard coat anodized finish
- Titan Piston system eliminates piston and cylinder damage due to over-stroke
- Hard coat anodized finish
- Unique single-piece drive pawl design for ultimate accuracy and longevity
- Components manufactured to ISO 9001/AS9100C:2009 standards

T Series Dimensions

MODEL	DIMENSIONS																	
	L1		L2		H1		H2		R1		R2		R3		W1		W2	
	in	mm	in	mm	in	mm	in	mm	in	mm	in	mm	in	mm	in	mm	in	mm
T1	4.79	121.7	7.02	178.3	4.39	111.5	5.83	148.1	1.03	26.2	4.41	112	6.26	159	2.04	51.8	2.95	74.9
T3	6.24	158.5	9.26	235.2	5.95	151.1	7.44	189	1.37	34.8	5.77	148.6	8.26	209.8	2.63	66.8	3.89	98.8
T5	7.45	189.2	11.15	283.2	7.07	179.6	8.81	223.8	1.65	41.9	6.82	173.2	9.92	252	3.15	80	4.97	126.2
T8	8.36	212.3	12.56	319.5	8.08	205.2	9.82	249.4	1.87	47.5	7.72	196.1	11.19	284.2	3.58	90.9	5.4	137.2
T10	9.17	232.9	13.89	352.9	8.97	227.8	10.71	272	2.05	52.1	8.62	218.9	12.39	314.7	3.95	100.3	5.84	148.3
T25	12.52	318	18.57	471.7	11.95	303.5	13.89	347.7	2.77	70.4	11.4	291.1	16.52	419.6	5.25	133.4	7.85	199.4



MODEL	PART NUMBER	SQUARE DRIVE	OPTIONAL SQUARE DRIVE SIZES	TORQUE		WEIGHT (INCL REACTION ARM)		ACCURACY
				TORQUE		WEIGHT		
				ft.lb	Nm	lbs	kg	%
T1	615 155 0010	3/4"	1/2 & 1	min - max	min - max	5	2.27	± 3%
T3	615 155 0020	1"	3/4 & 1 1/2	197 - 1304	267 - 1767	10	4.54	± 3%
T5	615 155 0030	1 1/2"	1 & 2 1/2	468 - 2971	635 - 4026	17	7.71	± 3%
T8	615 155 0040	1 1/2"	1 & 2 1/2	816 - 5300	1107 - 7182	25	11.34	± 3%
T10	615 155 0050	1 1/2"	1 & 2 1/2	1168 - 7818	1584 - 10593	30	13.61	± 3%
T25	615 155 0060	2 1/2"	1 1/2 & 3 1/2	1662 - 10368	2254 - 14049	70	31.75	± 3%

RANGE OPTIONAL HEX DRIVES SIZES	
in	mm
3/8 - 1	9 - 26
5/8 - 1 1/4	16 - 32
1 - 1 1/2	26 - 38
1 1/8 - 1 3/4	28 - 45
1 1/4 - 2	32 - 51
1 5/8 - 2 1/4	41 - 57



LP SERIES



LP series

**SUPERIOR BOLTING SOLUTIONS
LOW PROFILE,
VERSATILE AND
POWERFUL**



FEATURES

- Certified torque accuracy of +/- 3%
- The Titan WIDE TRACK ratchet tooth design distributes stress evenly, which provides a bigger contact area that deliver the strength to get the job done right every time
- Crafted from the highest quality aircraft-grade material for ultimate strength and durability (Aisi 4340 alloy steel)
- Low nose and flat design for extremely tight application accessibility
- Extremely versatile and light-weight



LP Series SuperThin® model

Extremely low profile hydraulic wrench, see details on page 43

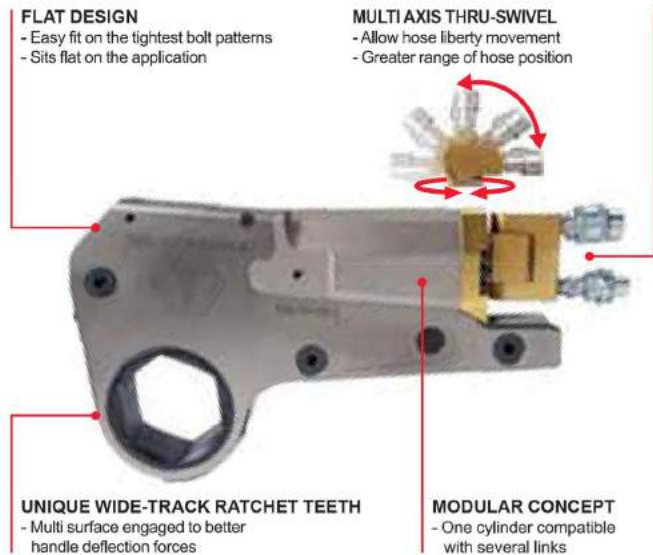
LP series: Low Profile Hydraulic Torque Wrenches

For bolting applications that require powerful performance in tight spaces, Titan's LP Series hydraulic torque wrench gets the job done right.

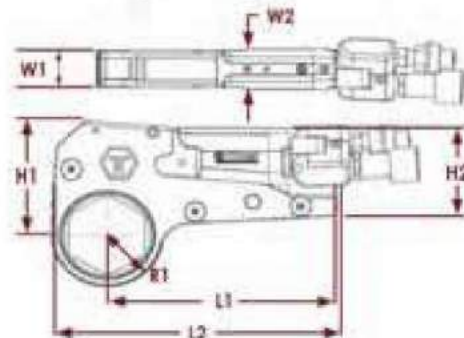
The LP Series Hydraulic Torque Wrench is unique because of the "Wide Track" ratchet tooth design that distributes stress evenly, which provides a bigger contact area that delivers the strength to get the job done right every time. Each hydraulic torque wrench has a calibration certificate with traceability to N.I.S.T. All testing equipment is calibrated by NVLAP Accredited Calibration Laboratory.

The LP Series Benefits

- Multi Axis Thru-Swivel prevents hose kinking and provides for ease of operation
- Flat design : easy fit on the tightest bolt patterns
- Unique Wide-Track ratchet teeth
- Modular concept



LP Series and SuperThin® LP Series Dimensions



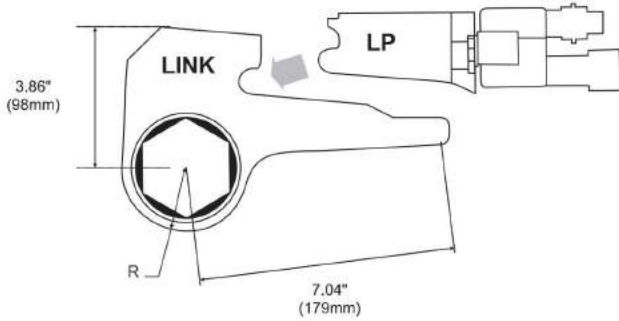
MODEL	DIMENSIONS											
	L1		L2		H1		H2		W1		W2	
	in	mm	in	mm	in	mm	in	mm	in	mm	in	mm
2LP	7	177,8	8,9	226,1	3,86	98	3,45	87,6	1,25	31,8	1,25	31,8
4LP	8,41	213,6	10,7	271,8	4,77	121,2	3,78	96	1,62	41,1	1,75	44,5
8LP	11,31	287,3	14,27	362,5	6,16	156,5	6,05	153,7	2,1	53,3	2,1	53,3
16LP	14	355,6	17,95	455,9	7,25	184,2	8,5	215,9	2,35	59,7	2,45	62,2
32LP	16	406,4	19,25	489	10,5	266,7	10,9	276,9	2,55	64,8	2,8	71,1
48LP	16	406,4	19,25	489	10,5	266,7	10,9	276,9	2,55	64,8	3,1	78,7
4LPST SuperThin	8,41	213,6	10,7	271,8	4,77	121,2	3,78	96	1	25,4	1,75	44,5



LP2 Cylinder + 2LP Links Specifications

Torque range:

268-1826 ft.lbs - 363-2476 Nm



LP2

LOW PROFILE WRENCH

LP2 CYLINDER	2LP LINKS				R: RADIUS		TOTAL WEIGHT	
	LINKS PART NUMBER	DESIGNATION	HEX male	HEX in.	mm	in.	lbs	kg
615 155 0180 268-1826 ft.Lbs 363-2476 Nm	615 812 2910	2LP03-12 3/4"	19 mm	3/4"	25.9	1.02	5,6	2,56
	615 812 2920	2LP03-13 13/16"	21 mm	13/16"	25.9	1.02	5,6	2,56
	615 812 2930	2LP03-14 7/8"	22 mm	7/8"	25.9	1.02	5,6	2,56
	615 812 2940	2LP03-15 15/16"	24 mm	15/16"	25.9	1.02	5,6	2,56
	615 812 2950	2LP03-100 1"	25 mm	1"	25.9	1.02	5,6	2,56
	615 812 2960	2LP03-101 1-1/16"	27 mm	1-1/16"	25.9	1.02	5,6	2,56
	615 812 2970	2LP03-102 1-1/8"	29 mm	1-1/8"	25.9	1.02	5,6	2,56
	615 812 2980	2LP04-103 1-3/16"	30 mm	1-3/16"	27.7	1.09	5,9	2,66
	615 812 2990	2LP04-104 1-1/4"	32 mm	1-1/4"	27.7	1.09	5,9	2,66
	615 812 3000	2LP05-105 1-5/16"	33 mm	1-5/16"	30.5	1.2	6,1	2,76
	615 812 3010	2LP05-106 1-3/8"	35 mm	1-3/8"	30.5	1.2	6,1	2,76
	615 812 3020	2LP05-36 mm 1-5/12"	36 mm	1-5/12"	30,5	1,2	6,1	2,76
	615 812 3030	2LP05-107 1-7/16"	37 mm	1-7/16"	30.5	1.2	6,1	2,76
	615 812 3040	2LP06-108 1-1/2"	38 mm	1-1/2"	33	1,3	6,3	2,86
	615 812 3050	2LP06-109 1-9/16"	40 mm	1-9/16"	33	1,3	6,3	2,86
	615 812 8370	2LP06-110 1-5/8"	41 mm	1-5/8"	33	1,3	6,3	2,86
	615 812 3070	2LP06-42 mm	42 mm		33	1,3	6,3	2,86
	615 812 3080	2LP07-111 1-11/16"	43 mm	1-11/16"	35,8	1,41	6,5	2,96
	615 812 3090	2LP07-112 1-3/4"	44 mm	1-3/4"	35,8	1,41	6,5	2,96
	615 812 3100	2LP07-45 mm 1-7/9"	45 mm	1-7/9"	35,8	1,41	6,5	2,96
	615 812 3110	2LP07-113 1-13/16"	46 mm	1-13/16"	35,8	1,41	6,5	2,96
	615 812 3120	2LP08-114 1-7/8"	47 mm	1-7/8"	38,6	1,52	6,7	3,06
	615 812 3130	2LP08-48 mm 1-8/9"	48 mm	1-8/9"	38,6	1,52	6,7	3,06
	615 812 3140	2LP08-115 1-15/16"	49 mm	1-15/16"	38,6	1,52	6,7	3,06
	615 812 3150	2LP08-50 mm 1-31/32"	50 mm	1-31/32"	38,6	1,52	6,7	3,06
	615 812 3160	2LP08-200 2"	51 mm	2"	38,6	1,52	6,7	3,06
	615 812 3170	2LP09-201 2-1/16"	52 mm	2-1/16"	41,4	1,63	7	3,16
	615 812 3180	2LP09-202 2-1/8"	54 mm	2-1/8"	41,4	1,63	7	3,16
	615 812 3190	2LP09-55 mm 2-1/6"	55 mm	2-1/6"	41,4	1,63	7	3,16
	615 812 3200	2LP09-203 2-3/16"	56 mm	2-3/16"	41,4	1,63	7	3,16
	615 812 3210	2LP10-204 2-1/4"	57 mm	2-1/4"	44,2	1,74	7	3,16
	615 812 3220	2LP10-58 mm 2-9/32"	58 mm	2-9/32"	44,2	1,74	7	3,16
615 812 3230	2LP10-205 2-5/16"	59 mm	2-5/16"	44,2	1,74	7	3,16	
615 812 3240	2LP10-206 2-3/8"	60 mm	2-3/8"	44,2	1,74	7	3,16	



LP SERIES



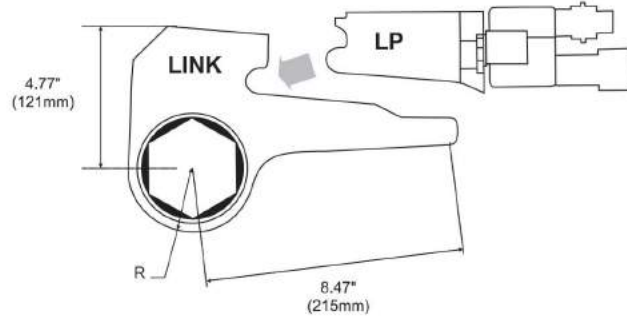
LP4

LOW PROFILE WRENCH

LP4 Cylinder + 4LP Links Specifications

Torque range:

504-3451 ft.lbs - 683-4680 Nm



LP4 CYLINDER	4LP LINKS				R: RADIUS		TOTAL WEIGHT	
	LINKS PART NUMBER	DESIGNATION	HEX male	HEX in.	mm	in.	lbs	kg
	615 812 3250	4LP03-100 1" - 25 mm	25 mm	1"	33,5	1,32	11	5,02
	615 812 3260	4LP03-101 1-1/16" - 27 mm	27 mm	1-1/16"	33,5	1,32	11	5,02
	615 812 3270	4LP03-102 1-1/8" - 29 mm	29 mm	1-1/8"	33,5	1,32	11	5,02
	615 812 3280	4LP03-103 1-3/16" - 30 mm	30 mm	1-3/16"	33,5	1,32	11	5,02
	615 812 3290	4LP03-104 1-1/4" - 32 mm	32 mm	1-1/4"	33,5	1,32	11	5,02
	615 812 3300	4LP03-105 1-5/16" - 33 mm	33 mm	1-5/16"	33,5	1,32	11	5,02
	615 812 3310	4LP03-34 mm 34 mm	34 mm		33,5	1,32	11	5,02
	615 812 3320	4LP03-106 1-3/8" - 35 mm	35 mm	1-3/8"	33,5	1,32	11	5,02
	615 812 3330	4LP03-36 Mm 1-5/12" - 36 mm	36 mm	1-5/12"	33,5	1,32	11	5,02
	615 812 3340	4LP03-107 1-7/16" - 37 mm	37 mm	1-7/16"	33,5	1,32	11	5,02
	615 812 3350	4LP04-108 1-1/2" - 38 mm	38 mm	1-1/2"	36,3	1,43	11,3	5,12
	615 812 3360	4LP04-109 1-9/16" - 40 mm	40 mm	1-9/16"	36,3	1,43	11,3	5,12
	615 812 3370	4LP04-110 1-5/8" - 41 mm	41 mm	1-5/8"	38,3	1,43	11,3	5,12
	615 812 3380	4LP05-42 mm 42 mm	42 mm		39,1	1,54	11,5	5,22
	615 812 3390	4LP05-111 1-11/16" - 43 mm	43 mm	1-11/16"	39,1	1,54	11,5	5,22
	615 812 3400	4LP05-112 1-3/4" - 44 Mm	44 mm	1-3/4"	39,1	1,54	11,5	5,22
	615 812 3410	4LP05-45 mm 1-7/9" - 45 mm	45 mm	1-7/9"	39,1	1,54	11,5	5,22
	615 812 3420	4LP05-113 1-13/16" - 46 mm	46 mm	1-13/16"	39,1	1,54	11,5	5,22
	615 812 3430	4LP06-114 1-7/8" - 47 mm	47 mm	1-7/8"	41,9	1,65	11,7	5,32
	615 812 3440	4LP06-48 mm 1-8/9" - 48 mm	48 mm	1-8/9"	41,9	1,65	11,7	5,32
	615 812 3450	4LP06-115 1-15/16" - 49 Mm	49 mm	1-15/16"	41,9	1,65	11,7	5,32
	615 812 3460	4LP06-50 mm 1-31/32" - 50 mm	50 mm	1-31/32"	41,9	1,65	11,7	5,32
	615 812 3470	4LP06-200 2" - 51 mm	51 mm	2"	41,9	1,65	11,7	5,32
	615 812 3480	4LP07-201 2-1/16" - 52 mm	52 mm	2-1/16"	44,4	1,75	11,9	5,42
	615 812 3490	4LP07-53 mm 53 mm	53 mm		44,4	1,75	11,9	5,42
	615 812 3500	4LP07-202 2-1/8" - 54 mm	54 mm	2-1/8"	44,4	1,75	11,9	5,42
	615 812 3510	4LP07-55 mm 2-1/8" - 55 mm	55 mm	2-1/8"	44,4	1,75	11,9	5,42
	615 812 3520	4LP07-203 2-3/16" - 56 mm	56 mm	2-3/16"	44,4	1,75	11,9	5,42
	615 812 3530	4LP08-204 2-1/4" - 57 Mm	57 mm	2-1/4"	47,2	1,86	12,1	5,52
	615 812 3540	4LP08-58 mm 2-9/32" - 58 mm	58 mm	2-9/32"	47,2	1,86	12,1	5,52
	615 812 3550	4LP08-205 2-5/16" - 59 mm	59 mm	2-5/16"	47,2	1,86	12,1	5,52
	615 812 3560	4LP08-206 2-3/8" - 60 mm	60 mm	2-3/8"	47,2	1,86	12,1	5,52
	615 812 3570	4LP09-207 2-7/16" - 62 mm	62 mm	2-7/16"	50	1,97	12,4	5,62
	615 812 3580	4LP09-208 2-1/2" - 63 mm	63 mm	2-1/2"	50	1,97	12,4	5,62
	615 812 3590	4LP09-64 mm 64 mm	64 mm		50	1,97	12,4	5,62
	615 812 3600	4LP09-209 2-9/16" - 65 mm	65 mm	2-9/16"	50	1,97	12,4	5,62
	615 812 3610	4LP10-210 2-5/8" - 67 mm	67 mm	2-5/8"	52,8	2,08	12,6	5,72
	615 812 3620	4LP10-211 2-11/16" - 68 mm	68 mm	2-11/16"	52,8	2,08	12,6	5,72
	615 812 3630	4LP10-212 2-3/4" - 70 mm	70 mm	2-3/4"	52,8	2,08	12,6	5,72
	615 812 3640	4LP11-213 2-13/16" - 71 mm	71 mm	2-13/16"	55,6	2,19	12,8	5,82
	615 812 3650	4LP11-214 2-7/8" - 73 mm	73 mm	2-7/8"	55,6	2,19	12,8	5,82
	615 812 3660	4LP11-215 2-15/16" - 75 mm	75 mm	2-15/16"	55,6	2,19	12,8	5,82
	615 812 3670	4LP12-300 3" - 76 mm	76 mm	3"	58,6	2,31	13	5,92
	615 812 3680	4LP12-301 3-1/16" - 78 mm	78 mm	3-1/16"	58,6	2,31	13	5,92
	615 812 3690	4LP12-302 3-1/8" - 79 mm	79 mm	3-1/8"	58,6	2,31	13	5,92
	615 812 3700	4LP12-80 mm 3-3/20" - 80 mm	80 mm	3-3/20"	58,6	2,31	13	5,92

615 155 0190
504-3451 ft.lbs
683-4680 Nm



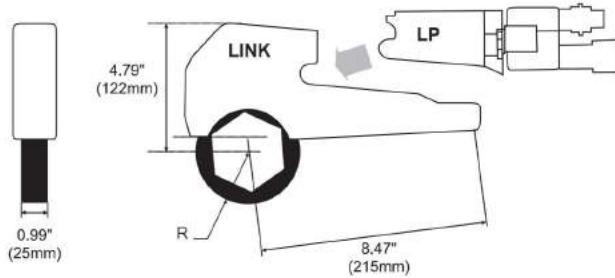
LP Series SUPERTHIN® LINK

Extremely Low Profile Hydraulic Wrench

Torque range:
390-2900 ft.lbs - 530-3950 Nm

The LP Series SUPERTHIN® Benefits

- LP Series Modular Concept, compatible with the LP4 cylinder model
- Fits where others can't: smallest link radius available today
- Extremely versatile
- Accurate: uses concentric straps around the bolt



4LPST

SUPERTHIN® LINK

LP4 CYLINDER	ST LINKS				R: RADIUS		TOTAL WEIGHT	
	LINKS PART NUMBER	DESIGNATION	HEX male	HEX in.	mm	in.	lbs	kg
615 155 0190 504-3451 ft.lbs 683-4680 Nm	615 812 8170	ST LINK 4LP-ST-07-113	46 mm	1-13/16"	43,9	1,73	10,2	4,62
	615 812 8180	ST LINK 4LP-ST-07-114	47 mm	1-7/8"	43,9	1,73	10,2	4,62
	615 812 8820	ST LINK 4LP-ST-07	50 mm		43,9	1,73	10,2	4,62
	615 812 8190	ST LINK 4LP-ST-07-200	51 mm	2"	43,9	1,73	10,6	4,82
	615 812 8200	ST LINK 4LP-ST-07-202	54 mm	2-1/8"	43,9	1,73	10,8	4,92
	615 812 8220	ST LINK 4LP-ST-07-M55	55 mm	2-1/8"	43,9	1,73	10,8	4,92
	615 812 8210	ST LINK 4LP-ST-07-203	56 mm	2-3/16"	43,9	1,73	11	5,02
	615 812 8540	ST LINK 4LP-ST-08-206	60 mm	2-3/8"	47,2	1,86	11,2	5,1
	615 812 9730	ST LINK 4LP-ST-09-208	63 mm	2-1/2"				
	615 812 8240	ST LINK 4LP-ST-09-209	65 mm	2-9/16"	49,3	1,94	11,7	5,32
	615 812 8560	ST LINK 4LP-ST-10-212	70 mm	2-3/4"	52,6	2,07	11,8	5,37
	615 812 8260	ST LINK 4LP-ST-11-213	71 mm	2-13/16"	55,1	2,17	11,9	5,42
	615 812 8270	ST LINK 4LP-ST-11-215	75 mm	2-15/16"	55,1	2,17	11,9	5,42
	615 812 8280	ST LINK 4LP-ST-12-302	79 mm	3-1/8"	57,9	2,28	12,1	5,52
	615 812 8290	ST LINK 4LP-ST-12	80 mm	3-3/20"	57,9	2,28	12,1	5,52

Torque from
390 to 2900 ft.lbs
 (530-3950 Nm)

↓

Max Pressure
8000 Psi
 (590 Bar)



4LPST



LP SERIES



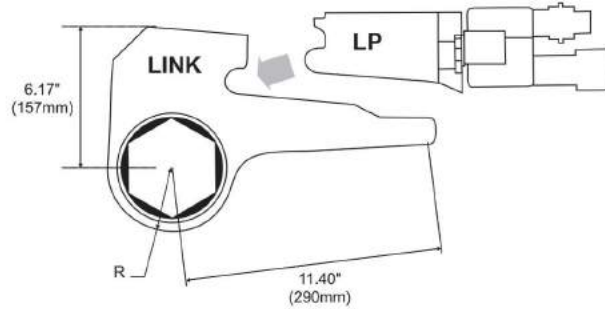
LP8

LOW PROFILE WRENCH

LP8 Cylinder + 8LP Links Specifications

Torque range:

1075-6905 ft.lbs - 1458-9362 Nm



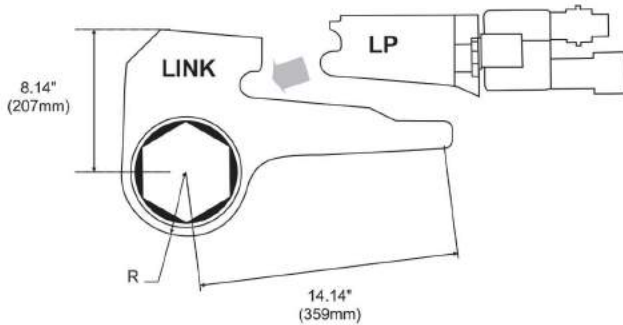
LP8 CYLINDER	8LP LINKS				R: RADIUS		TOTAL WEIGHT	
	LINKS PART NUMBER	DESIGNATION	HEX male	HEX in.	mm	in.	lbs	kg
615 155 0200 1075-6905 ft.lbs 1458-9362 Nm	615 812 3710	8LP03-113 1-13/16" - 46 mm	46 mm	1-13/16	43.2	1.7	11.4	5.17
	615 812 3720	8LP03-48 mm 48 mm	48 mm	1-8/9	43.2	1.7	11.4	5.17
	615 812 3730	8LP03-50 mm 1-31/32" - 50 mm	50 mm	1-31/32	43.2	1.7	11.4	5.17
	615 812 3740	8LP03-200 2" - 51 mm	51 mm	2"	43.2	1.7	11.4	5.17
	615 812 3750	8LP04-201 2-1/16# - 52 mm	52 mm	2-1/16"	46	1.81	11.6	5.27
	615 812 3760	8LP04-53 mm 53 mm	53 mm		46	1.81	11.6	5.27
	615 812 3770	8LP04-202 2-1/8# - 54 mm	54 mm	2-1/8"	46	1.81	11.6	5.27
	615 812 3780	8LP04-55 mm 2-1/16# - 55 mm	55 mm	2-1/16"	46	1.81	11.6	5.27
	615 812 3790	8LP05-203 2-3/16" - 56 mm	56 mm	2-3/16"	48.8	1.92	11.8	5.37
	615 812 3800	8LP05-204 2-1/4" - 57 mm	57 mm	2-1/4"	48.8	1.92	11.8	5.37
	615 812 3810	8LP05-205 2-5/16" - 59 mm	59 mm	2-5/16"	48.8	1.92	11.8	5.37
	615 812 3820	8LP06-206 2-3/8" - 60 mm	60 mm	2-3/8"	51.6	2.03	12	5.47
	615 812 3830	8LP06-207 2-7/16" - 62 mm	62 mm	2-7/16"	51.6	2.03	12	5.47
	615 812 3840	8LP06-208 2-1/2" - 63 mm	63 mm	2-1/2"	51.6	2.03	12	5.47
	615 812 3850	8LP07-209 2-9/16" - 65 mm	65 mm	2-9/16"	54.4	2.14	12.3	5.57
	615 812 3860	8LP07-210 2-5/8" - 67 mm	67 mm	2-5/8"	54.4	2.14	12.3	5.57
	615 812 3870	8LP07-211 2-11/16" - 68 mm	68 mm	2-11/16"	54.4	2.14	12.3	5.57
	615 812 3880	8LP08-212 2-3/4" - 70 mm	70 mm	2-3/4"	57.2	2.25	12.5	5.67
	615 812 3890	8LP08-213 2-13/16" - 71 mm	71 mm	2-13/16"	57.2	2.25	12.5	5.67
	615 812 3900	8LP08-214 2-7/8" - 73 mm	73 mm	2-7/8"	57.2	2.25	12.5	5.67
	615 812 3910	8LP08-215 2-15/16" - 75 mm	75 mm	2-15/16"	57.2	2.25	12.5	5.67
	615 812 3930	8LP09-300 3" - 76 mm	76 mm	3"	60.2	2.37	12.7	5.77
	615 812 3940	8LP09-77 mm 77 mm	77 mm	/	60.2	2.37	12.7	5.77
	615 812 3950	8LP09-301 3-1/16" - 78 mm	78 mm	3-1/16"	60.2	2.37	12.7	5.77
	615 812 3960	8LP09-302 3-1/8" - 79 mm	79 mm	3-1/8"	60.2	2.37	12.7	5.77
	615 812 3970	8LP10-80 mm 3-3/20" - 80 mm	80 mm	3-3/20"	63.5	2.5	12.9	5.87
	615 812 3980	8LP10-303 3-3/16" - 81 mm	81 mm	3-3/16"	63.5	2.5	12.9	5.87
	615 812 3990	8LP10-304 3-1/4" - 83 mm	83 mm	3-1/4"	63.5	2.5	12.9	5.87
	615 812 4000	8LP10-305 3-5/16" - 84 mm	84 mm	3-5/16"	63.5	2.5	12.9	5.87
	615 812 4010	8LP10-85 mm 3-9/26" - 85 mm	85 mm	3-9/26"	63.5	2.5	12.9	5.87
	615 812 4020	8LP10-306 3-3/8" - 86 mm	86 mm	3-3/8"	63.5	2.5	12.9	5.87
	615 812 4030	8LP11-307 3-7/16" - 87 mm	87 mm	3-7/16"	66.3	2.61	13.1	5.97
	615 812 4040	8LP11-308 3-1/2" - 89 mm	89 mm	3-1/2"	66.3	2.61	13.1	5.97
	615 812 4050	8LP12-309 3-9/16" - 90 mm	90 mm	3-9/16"	68.8	2.71	13.4	6.07
	615 812 4060	8LP12-310 3-5/8" - 92 mm	92 mm	3-5/8"	68.8	2.71	13.4	6.07
	615 812 4070	8LP12-311 3-11/16" - 94 mm	94 mm	3-11/16"	68.8	2.71	13.4	6.07
	615 812 4080	8LP13-312 3-3/4" - 95 mm	95 mm	3-3/4"	71.6	2.82	13.6	6.17
	615 812 4090	8LP13-313 3-13/16" - 97 mm	97 mm	3-13/16"	71.6	2.82	13.6	6.17
	615 812 4100	8LP13-314 3-7/8" - 98 mm	98 mm	3-7/8"	71.6	2.82	13.6	6.17
	615 812 4110	8LP14-315 3-15/16" - 100 mm	100 mm	3-15/16"	74.4	2.93	13.8	6.27
615 812 4120	8LP14-400 4" - 101 mm	101 mm	4"	74.4	2.93	13.8	6.27	
615 812 4130	8LP14-102 mm 102 mm	102 mm	/	74.4	2.93	13.8	6.27	
615 812 4140	8LP14-401 4-1/16" - 103 mm	103 mm	4-1/16"	74.4	2.93	13.8	6.27	
615 812 4150	8LP14-402 4-1/8" - 105 mm	105 mm	4-1/8"	74.4	2.93	13.8	6.27	
615 812 4160	8LP15-403 4-3/16" - 106 mm	106 mm	4-3/16"	85.1	3.35	14.1	6.39	
615 812 4170	8LP15-404 4-1/4" - 108 mm	108 mm	4-1/4"	85.1	3.35	14.1	6.39	
615 812 4180	8LP15-405 4-5/16" - 110 mm	110 mm	4-5/16"	85.1	3.35	14.1	6.39	
615 812 4190	8LP15-406 4-3/8" - 111 mm	111 mm	4-3/8"	85.1	3.35	14.1	6.39	
615 812 4200	8LP15-407 4-7/16" - 113 mm	113 mm	4-7/16"	85.1	3.35	14.1	6.39	
615 812 4210	8LP15-408 4-1/2" - 114 mm	114 mm	4-1/2"	85.1	3.35	14.1	6.39	
615 812 4220	8LP15-115 mm 4-48/91" - 115 mm	115 mm	4-48/91"	85.1	3.35	14.1	6.39	



LP16 Cylinder + 16LP Links Specifications

Torque range:

2360-14729 ft.lbs - 3200-19970 Nm



LP16

LOW PROFILE WRENCH

LP16 CYLINDER	16LP LINKS				R: RADIUS		TOTAL WEIGHT	
	LINKS PART NUMBER	DESIGNATION	HEX male	HEX in.	mm	in.	lbs	kg
615 155 0210 2360-14729 ft.lbs 3200-19970 Nm	615 812 4230	16LP02-206 2-3/8" - 60 mm	60 mm	2-3/8"	63	2,48	35,1	15,94
	615 812 4240	16LP02-208 2-1/2" - 63 mm	63 mm	2-1/2"	63	2,48	35,1	15,94
	615 812 4250	16LP02-209 2-9/16" - 65 mm	65 mm	2-9/16"	63	2,48	35,1	15,94
	615 812 4260	16LP02-210 2-5/8" - 67 mm	67 mm	2-5/8"	63	2,48	35,1	15,94
	615 812 4270	16LP02-211 2-11/16" - 68 mm	68 mm	2-11/16"	63	2,48	35,1	15,94
	615 812 4280	16LP05-212 2-3/4" - 70 mm	70 mm	2-3/4"	70,6	2,78	36,2	16,44
	615 812 4290	16LP05-213 2-13/16" - 71 mm	71 mm	2-13/16"	70,6	2,78	36,2	16,44
	615 812 4300	16LP05-214 2-7/8" - 73 mm	73 mm	2-7/8"	70,6	2,78	36,2	16,44
	615 812 4310	16LP05-215 2-15/16" - 75 mm	75 mm	2-15/16"	70,6	2,78	36,2	16,44
	615 812 4320	16LP05-300 3" - 76 mm	76 mm	3"	70,6	2,78	36,2	16,44
	615 812 4330	16LP05-301 3-1/16" - 78 mm	78 mm	3-1/16"	70,6	2,78	36,2	16,44
	615 812 4340	16LP05-302 3-1/8" - 79 mm	79 mm	3-1/8"	70,6	2,78	36,4	16,54
	615 812 4350	16LP05-80MM 3-3/20" - 80 mm	80 mm	3-3/20"	70,6	2,78	36,4	16,54
	615 812 4360	16LP05-303 3-3/16" - 81 mm	81 mm	3-3/16"	70,6	2,78	36,4	16,54
	615 812 4370	16LP05-304 3-1/4" - 83 mm	83 mm	3-1/4"	70,6	2,78	36,4	16,54
	615 812 4380	16LP06-305 3-5/16" - 84 mm	84 mm	3-5/16"	73,4	2,89	37,5	17,04
	615 812 4390	16LP06-85MM 3-9/26" - 85 mm	85 mm	3-9/26"	73,4	2,89	37,5	17,04
	615 812 4400	16LP06-306 3-3/8" - 86 mm	86 mm	3-3/8"	73,4	2,89	37,5	17,04
	615 812 4410	16LP06-307 3-7/16" - 87 mm	87 mm	3-7/16"	73,4	2,89	37,5	17,04
	615 812 4420	16LP06-308 3-1/2" - 89 mm	89 mm	3-1/2"	73,4	2,89	37,5	17,04
	615 812 4430	16LP07-309 3-9/16" - 90 mm	90 mm	3-9/16"	76,2	3	38,6	17,54
	615 812 4440	16LP07-310 3-5/8" - 92 mm	92 mm	3-5/8"	76,2	3	38,6	17,54
	615 812 4450	16LP07-311 3-11/16" - 94 mm	94 mm	3-11/16"	76,2	3	38,6	17,54
	615 812 4460	16LP07-312 3-3/4" - 95 mm	95 mm	3-3/4"	76,2	3	38,6	17,54
	615 812 4470	16LP08-313 3-13/16" - 97 mm	97 mm	3-13/16"	80,3	3,16	39,7	18,04
	615 812 4480	16LP08-314 3-7/8" - 98 mm	98 mm	3-7/8"	80,3	3,16	39,7	18,04
	615 812 4490	16LP09-315 3-15/16" - 100 mm	100 mm	3-15/16"	83,3	3,28	40,8	18,54
	615 812 4500	16LP09-400 4" - 101 mm	101 mm	4"	83,3	3,28	40,8	18,54
	615 812 4510	16LP09-102MM 102 mm	102 mm		83,3	3,28	40,8	18,54
	615 812 4520	16LP09-402 4-1/8" - 105 mm	105 mm	4-1/8"	83,3	3,28	40,8	18,54
	615 812 4550	16LP11-405 4-5/16" - 110 mm	110 mm	4-5/16"	89,2	3,51	41,9	19,04
	615 812 4580	16LP11-115 mm	115 mm	4-48/91"	89,2	3,51	41,9	19,04
615 812 4590	16LP12-410 4-5/8" - 117 mm	117 mm	4-5/8"	92,2	3,63	42,9	19,52	
615 812 4600	16LP12-118MM 118 mm	118 mm		92,2	3,63	42,9	19,52	
615 812 4610	16LP12-411 4-11/16" - 119 mm	119 mm	4-11/16"	92,2	3,63	42,9	19,52	



LP SERIES



LP32-48

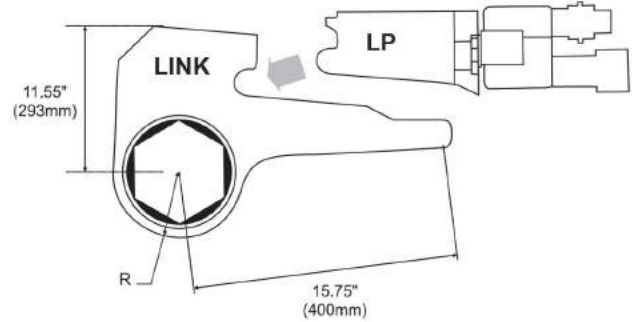
LOW PROFILE WRENCH

LP32/48 Cylinder + 32LP Links Specifications

Torque range:

LP32: 5250-31760 ft.lbs - 7119-43060 Nm

LP48: 7125-43000 ft.lbs - 9662-58308 Nm



LP32/48 CYLINDER	32LP LINKS				R: RADIUS		TOTAL WEIGHT			
	LINKS PART NUMBER	DESIGNATION	HEX male	HEX in.	mm	in.	LP32		LP48	
							lbs	kg	lbs	kg
LP32 615 155 0220 5250-31760 ft.lbs 7119-44748 Nm LP48 615 155 0230 7125-43060 ft.lbs 9662-58308 Nm	615 812 4620	32LP04-314 3-7/8# - 98 mm	98 mm	3-7/8"	93,5	3,68	49,8	22,64	51,2	23,28
	615 812 4630	32LP04-315 3-15/16# - 100 mm	100 mm	3-15/16"	93,5	3,68	49,8	22,64	53,4	23,28
	615 812 4640	32LP04-400 4# - 101 mm	101 mm	4"	93,5	3,68	49,8	22,64	55,6	23,28
	615 812 4650	32LP04-402 4-1/8# - 105 mm	105 mm	4-1/8"	93,5	3,68	49,8	22,64	57,8	23,28
	615 812 4660	32LP04-404 4-1/4# - 108 mm	108 mm	4-1/4"	93,5	3,68	49,8	22,64	60	23,28
	615 812 4670	32LP04-408 4-1/2# - 114 mm	114 mm	4-1/2"	93,5	3,68	52	23,64	64,4	24,28
	615 812 4680	32LP04-115MM 115 mm	115 mm	4-48/91"	93,5	3,68	52	23,64	66,6	24,28
	615 812 4690	32LP04-409 4-9/16# - 116 mm	116 mm	4-9/16"	93,5	3,68	52	23,64	68,8	24,28
	615 812 4700	32LP04-410 4-5/8# - 117 mm	117 mm	4-5/8"	93,5	3,68	52	23,64	71	24,28
	615 812 4710	32LP07-411 4-11/16# - 119 mm	119 mm	4-11/16"	101,9	4,01	63	28,64	84,2	29,28
	615 812 4720	32LP07-120MM 120 mm	120 mm		101,9	4,01	63	28,64	86,4	29,28
	615 812 4730	32LP10-120MM 120 mm	120 mm		101,9	4,01	74	33,64	99,6	34,28
	615 812 4740	32LP07-412 4-3/4# - 121 mm	121 mm	4-3/4"	101,9	4,01	63	28,64	90,8	29,28
	615 812 4750	32LP07-413 4-13/16# - 122 mm	122 mm	4-13/16"	101,9	4,01	63	28,64	93	29,28
	615 812 4760	32LP07-414 4-7/8# - 124 mm	124 mm	4-7/8"	101,9	4,01	63	28,64	95,2	29,28
	615 812 4770	32LP07-415 4-15/16# - 125 mm	125 mm	4-15/16"	101,9	4,01	67,4	30,64	101,8	31,28
	615 812 4780	32LP07-500 5# - 127 mm	127 mm	5"	101,9	4,01	67,4	30,64	104	31,28
	615 812 4790	32LP07-501 5-1/16# - 128 mm	128 mm	5-1/16"	101,9	4,01	69,6	31,64	106,4	32,28
	615 812 4800	32LP10-502 5-1/8# - 130 mm	130 mm	5-1/8"	116,1	4,57	74	33,64	115	34,28
	615 812 4810	32LP10-503 5-3/16# - 132 mm	132 mm	5-3/16"	116,1	4,57	74	33,64	117,2	34,28
	615 812 4820	32LP10-504 5-1/4# - 133 mm	133 mm	5-1/4"	116,1	4,57	74	33,64	119,4	34,28
	615 812 4830	32LP10-505 5-5/16# - 135 mm	135 mm	5-5/16"	116,1	4,57	76,2	34,64	123,8	35,28
	615 812 4840	32LP10-506 5-3/8# - 136 mm	136 mm	5-3/8"	116,1	4,57	76,2	34,64	126	35,28
	615 812 4850	32LP10-508 5-1/2# - 138 mm	138 mm	5-7/16"	116,1	4,57	78,4	35,64	130,4	36,28
	615 812 4860	32LP10-140MM_140 mm	140 mm	5-1/2"	116,1	4,57	78,4	35,64	132,6	36,28
	615 812 4870	32LP12-145MM 145 mm	145 mm		128,3	5,05	85	38,64	141,4	39,28
	615 812 4880	32LP12-512 5-3/4' - 146 mm	146 mm	5-3/4"	128,3	5,05	87,2	39,64	145,8	40,28
	615 812 4890	32LP12-513 5-13/16' - 148 mm	148 mm	5-13/16"	128,3	5,05	91,6	41,64	152,4	42,28
	615 812 4900	32LP12-514 5-7/8' - 150 mm	150 mm	5-7/8"	128,3	5,05	96	43,64	159	44,28
	615 812 4910	32LP12-515 5-15/16' - 151 mm	151 mm	5-15/16"	128,3	5,05	99,3	45,14	164,5	45,78
	615 812 4920	32LP12-600 6" - 152 mm	152 mm	6"	128,3	5,05	104,8	47,64	172,2	48,28
	615 812 4930	32LP12-601 6-1/16" - 154 mm	154 mm	6-1/16"	128,3	5,05	107	48,64	176,6	49,28
615 812 4940	32LP12-155MM 155 mm	155 mm		128,3	5,05	109,2	49,64	181	50,28	
615 812 4950	32LP12-602 6-1/8' - 156 mm	156 mm	6-1/8"	128,3	5,05	111,4	50,64	185,4	51,28	
615 812 4960	32LP12-160MM 160 mm	160 mm		128,3	5,05	116,7	53,04	192,9	53,68	



TRI-HOLD® Backup Wrenches

With Titan TRI-HOLD backup wrenches, you can forget all your other backup wrenches. One tool fits multiple bolt sizes, so you no longer need a backup wrench for each nut size. Furthermore, the Titan backup wrench patented design is stronger and more versatile than any other backup wrench on the market, it has no moving parts for higher durability and ease of use.

The load is retained by the three flats of the triangle on the wrench. These flats are much stronger than the flats of a regular hexagonal key. The third flat of the triangle is retained by an adjustable screw which secures the nut for safer hands-free operation.

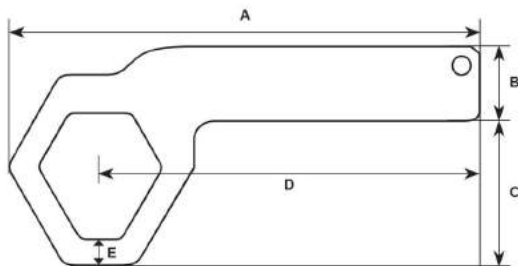
Loosening the screw allows quick removal, eliminating the need to hit the wrench and change the bolt load. The thicknesses of the walls are unchanged so the TRI-HOLD will fit in the toughest and hardest to reach places. One tool handles a multitude of hex sizes, saving you time and money.



The TRI-HOLD® Benefits

- Safer, hands free operation
- Unique Patented Backup wrenches
- Durable design
- Works on imperial and metric bolts
- Corrosion resistance

TRI-HOLD® Dimensions



MODEL	PART NUMBER	NUT SIZE RANGE/A/F		DIMENSIONS									
				A		B		C		D		E	
		in	mm	in	mm	in	mm	in	mm	in	mm	in	mm
TTH-1A	615 812 2500	1 - 1 5/8	26 - 41	7,4	188	1,18	30	2,34	59,4	6,03	153,2	0,39	9,9
TTH-2A	615 812 2510	1 3/8 - 2 1/16	35 - 55	9,19	233,4	1,68	42,7	2,99	75,9	7,52	191	0,39	9,9
TTH-3A	615 812 2520	1 3/4 - 2 11/16	44 - 69	12,23	310,6	1,97	50	3,78	96	9,85	250,2	0,75	19,1
TTH-4A	615 812 2530	2 1/16 - 3 3/8	54 - 86	15,12	384	2,46	62,5	4,6	116,8	12,24	310,9	0,81	20,6
TTH-5A	615 812 2540	2 11/16 - 4 3/16	68 - 107	18,26	463,8	3,06	77,7	5,71	145	14,73	374,1	1	25,4

TRI-HOLD



TRI-HOLD

**VERSATILE,
DURABLE,
SAFER**



FEATURES

- One tool fits multiple bolt sizes
- Adjustable screw for hands-free operation
- Electroless nickel Plating
- Unique patented design



PUMPS

ELECTRIC PUMPS



EXE-MINI



EXE-MAX



EXE-MAX SUPER

EXE SERIES

EXPRESS Series - EXE

Electric Hydraulic Torque Wrench Pumps

BENEFITS

- Robust, Fast and Quiet

FEATURES

- 3 stage Piston design - faster at working pressure
- Quiet operation - Low noise emission
- Double scale gauge (psi/bar)

EXE MINI SPECIAL FEATURE (SMALL FRAME)

- Built-in thermometer (°F/°C) for oil temperature check

EXE MAX SPECIAL FEATURE (FULL FRAME)

- Built-in lifting hook for superior portability

EXE MAX SUPER

- Built-in oil cooler, stabilizes oil viscosity, increasing oil life and reducing wear of pump
- Sturdy steel full protective frame for greater pump durability and stability on soft or uneven surfaces

2 port versions available for EXE MAX and EXE MAX Super



Single port

4-tool port

EXE MODEL		CHANNEL	VOLTAGE (V)	FREQUENCY (HZ)	AMP RUNNING	POWER		MAX OIL FLOW						WEIGHT		DIMENSIONS (L X W X H)				CRANE	OIL COOLER	OIL TANK CAPACITY			
MODEL	PART NUMBER					hp	kw	LOW PRESSURE		MEDIUM PRESS		HIGH PRESSURE		lbs	kg	in		mm				L	GAL		
						cu in/min	L/min	cu in/min	L/min	cu in/min	L/min														
EXE-MINI-230SF1	615 156 0010	1	230	50/60	3	0.35	0.25	195	3.2	55	0.9	25	0.4	36.3	16.5	12.8	10.4	16.8	10.4	260	420	NO	NO	3	0.79
EXE-MINI-100SF1	615 156 0020	1	230	50/60	5	0.35	0.25	195	3.2	55	0.9	25	0.4	36.3	16.5	12.8	10.4	16.8	10.4	260	420	NO	NO	3	0.79
EXE-MINI-115SF1	615 156 0030	1	230	50/60	5	0.35	0.25	195	3.2	55	0.9	25	0.4	36.3	16.5	12.8	10.4	16.8	10.4	260	420	NO	NO	3	0.79
EXE-MINI-110SF1	615 156 0040	1	230	50/60	5	0.35	0.25	195	3.2	55	0.9	25	0.4	36.3	16.5	12.8	10.4	16.8	10.4	260	420	NO	NO	3	0.79
EXE-MAX-230-FFH1	615 156 0130	1	230	50/60	5	0.75	0.55	390	6.5	110	1.8	43	0.7	66	30	18	12	20	12	300	500	YES	YES	7.5	1.98
EXE-MAX-230-FFH4	615 156 0140	1	230	50/60	5	0.75	0.55	390	6.5	110	1.8	43	0.7	66	30	18	12	20	12	300	500	YES	YES	7.5	1.98
EXE-MAX-100-FFH1	615 156 0150	1	230	50/60	12	0.75	0.55	360	6	102	1.4	43	0.7	66	30	18	12	20	12	300	500	YES	YES	7.5	1.98
EXE-MAX-100-FFH4	615 156 0160	1	230	50/60	12	0.75	0.55	360	6	102	1.4	43	0.7	66	30	18	12	20	12	300	500	YES	YES	7.5	1.98
EXE-MAX-115-FFH1	615 156 0170	1	230	50/60	10	0.75	0.55	390	6.5	110	1.8	43	0.7	66	30	18	12	20	12	300	500	YES	YES	7.5	1.98
EXE-MAX-115-FFH4	615 156 0180	1	230	50/60	10	0.75	0.55	390	6.5	110	1.8	43	0.7	66	30	18	12	20	12	300	500	YES	YES	7.5	1.98
EXE-MAX-110-FFH1	615 156 0190	1	230	50/60	10	0.75	0.55	390	6.5	110	1.8	43	0.7	66	30	18	12	20	12	300	500	YES	YES	7.5	1.98
EXE-MAX-110-FFH4	615 156 0200	1	230	50/60	10	0.75	0.55	390	6.5	110	1.8	43	0.7	66	30	18	12	20	12	300	500	YES	YES	7.5	1.98
EXE-MAXS-230-FF1	615 156 0210	1	230	50/60	8	1.5	1.1	510	8.5	180	3.4	80	1.3	72.6	33	18	12.4	18	12.4	310	450	NO	YES	7.5	1.98
EXE-MAXS-230-FF4	615 156 0220	1	230	50/60	8	1.5	1.1	510	8.5	180	3.4	80	1.3	72.6	33	18	12.4	18	12.4	310	450	NO	YES	7.5	1.98
EXE-MAXS-115-FF1	615 156 0230	1	230	50/60	13	1.5	1.1	460	7.5	155	2.5	62	1	72.6	33	18	12.4	18	12.4	310	450	NO	YES	7.5	1.98
EXE-MAXS-115-FF4	615 156 0240	1	230	50/60	13	1.5	1.1	460	7.5	155	2.5	62	1	72.6	33	18	12.4	18	12.4	310	450	NO	YES	7.5	1.98
EXE-MAXS-110-FF1	615 156 0250	1	230	50/60	15	1.5	1.1	510	8.5	180	3.4	80	1.3	72.6	33	18	12.4	18	12.4	310	450	NO	YES	7.5	1.98
EXE-MAXS-110-FF4	615 156 0260	1	230	50/60	15	1.5	1.1	510	8.5	180	3.4	80	1.3	72.6	33	18	12.4	18	12.4	310	450	NO	YES	7.5	1.98



EXPRESS Series - EXA

Pneumatic Hydraulic Torque Wrench Pumps

BENEFITS

- Robust, Powerful and Quiet

FEATURES

- Explosion-proof air driven motor
- 3 Stage Piston design - faster at working pressure
- Double scale gauge (psi/bar)
- Built-in thermometer (°F/°C) for oil temperature check

EXA MINI SPECIAL FEATURE (SMALL FRAME)

- Built-in thermometer (°F/°C) for oil temperature check

EXA MAX SPECIAL FEATURE (FULL FRAME)

- Sturdy steel full protective frame for greater pump durability and stability on soft or uneven surfaces

PNEUMATIC PUMPS



EXA-MINI



EXA-MAX
SINGLE PORT



EXA-MAX
4-TOOL PORT

EXA SERIES

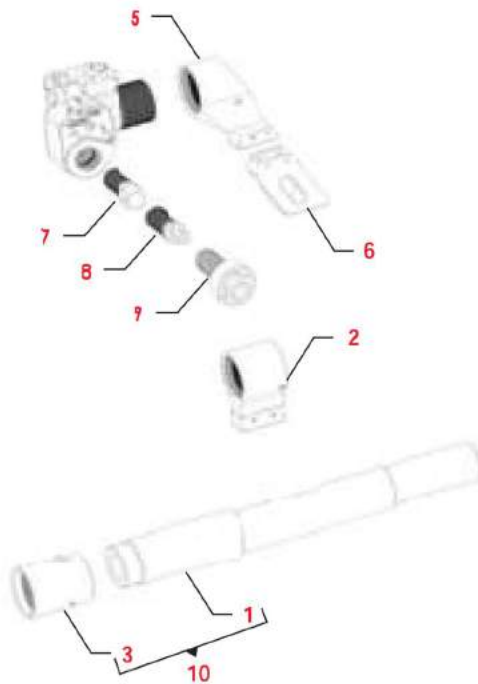
EXA MODEL		CHANNEL	POWER		MAX OIL FLOW						WEIGHT W/O OIL		DIMENSIONS (L X W X H)				FRAME	CRANE	OIL COOLER	OIL TANK CAPACITY			
MODEL	PART NUMBER		HP	KW	LOW PRESSURE		MEDIUM PRESS		HIGH PRESSURE		lb	kg	in		mm					L	GAL		
					cu in/min	L/min	cu in/min	L/min	cu in/min	L/min													
EXAMINI-SF1	615 156 0280	1	1.55	1.12	275	4.5	86	1.4	32	0.5	41	19	12.2	11.5	16.5	31	29	42	Small	NO	YES	3	0.79
EXAMAX-FF1	615 156 0290	1	3.8	2.8	460	7.5	153	2.5	55	0.9	66	30	20.5	13.8	20	52	35	51	Full	NO	YES	7.5	1.98
EXAMAX-FF4	615 156 0300	1	3.8	2.8	460	7.5	153	2.5	55	0.9	66	30	20.5	13.8	20	52	35	51	Full	NO	YES	7.5	1.98



HYDRAULIC BOLTING

Accessories - Hydraulic tools

T SERIES ACCESSORIES



MODEL	ITEM	REF	DESCRIPTION	PART NUMBER	
T1	1	T1-ALCA	Extended Alco Arm	615 812 8570	
	2	T1-03-STUBBY-A	Stubby reaction Arm	615 565 7230	
	3	T1-ALCS-A	Steel Sleeve assembly	615 548 2655	
	5	T1-03A	Standard reaction arm	615 398 9955	
	6	T1-43-300-A	Extended boot Assy	615 565 7185	
	7	T1-SQ100	T1 step up direct sq drive 1"	615 575 2745	
	8	T1-HX008	T1 direct hex drive 1/2"	615 575 2035	
		T1-HX017MM	T1 direct hex drive 17mm	615 575 2895	
		T1-HX019MM	T1 direct hex drive 19mm	615 575 1545	
		T1-HX021MM	T1 direct hex drive 21mm-13/16"	615 575 3095	
		T1-HX022MM	T1 direct hex drive 22mm	615 575 1555	
		T1-HX023MM	T1 direct hex drive 23mm	615 575 3105	
		T1-HX100	T1 direct hex drive 25mm-1"	615 575 2125	
		T1-HX027MM	T1 direct hex drive 27mm	615 575 2105	
		T1-HX036MM	T1 direct hex drive 36mm	615 575 1565	
	9	T1-S30MM	T1 direct hex drive socket 30mm	615 575 2595	
		T1-S36MM	T1 direct hex drive socket 36mm	615 575 2605	
	10	T1-ALCAS	Extended Alco arm and sleeve	615 812 8620	
	T3	1	T3-ALCA	Extended Alco Arm	615 812 8580
		2	T3-03-STUBBY-4	Stubby reaction Arm	615 565 7240
3		T3-ALCS-A	Steel Sleeve assembly	615 548 2665	
5		T3-03A	Standard reaction arm	615 398 9965	
6		T3-43-300	Extended boot	615 565 7195	
7		T3-SQ012	T3 step down direct sq drive 3/4"	615 575 2795	
		T3-SQ108	T3 step up direct sq drive 1 1/2"	615 575 2845	
8		T3-HX010	T3 direct hex drive 5/8" - 17mm	615 575 1825	
		T3-HX012	T3 direct hex drive 3/4" - 19mm	615 575 1835	
		T3-HX022MM	T3 direct hex drive 7/8" - 22mm	615 575 1575	
		T3-HX024MM	T3 direct hex drive 15/16" - 24mm	615 575 1915	
		T3-HX100	T3 direct hex drive 1" - 25mm	615 575 1855	
		T3-HX101	T3 direct hex drive 1-1/16" - 27mm	615 575 1865	
		T3-HX030MM	T3 direct hex drive 1-13/16" - 30mm	615 575 1925	
		T3-HX032MM	T3 direct hex drive 1-1/4" - 32mm	615 575 1935	
		T3-HX036MM	T3 direct hex drive 1-5/12" - 36mm	615 575 1945	
9		T3-S36MM	T3 direct hex drive socket 36mm	615 575 2885	
		T3-S42MM	T3 direct hex drive socket 42mm	615 575 2965	
		T3-S46MM	T3 direct hex drive socket 46mm	615 575 2975	
10		T3-ALCAS	Extended Alco arm and sleeve	615 812 8630	
T5	1	T5-ALCA	Extended Alco Arm	615 812 8590	
	2	T5-03-STUBBY-A	Stubby reaction Arm	615 565 5310	
	3	T5-ALCS-A	Steel Sleeve assembly	615 548 2675	
	5	T5-03A	Standard reaction arm	615 398 9975	
	6	T5-43-300	Extended boot	615 565 7205	
	7	T5-SQ100	T5 step down direct sq drive 1"	615 575 2805	
		T5-SQ208	T5 step up direct sq drive 2 1/2"	615 575 2855	
	8	T5-HX012	T5 direct hex drive 3/4"	615 575 1635	
		T5-HX014	T5 direct hex drive 7/8"	615 575 1645	
		T5-HX100	T5 direct hex drive 1"	615 575 1655	
		T5-HX030MM	T5 direct hex drive 30mm	615 575 1765	
		T5-HX032MM	T5 direct hex drive 32mm	615 575 1505	
		T5-HX036MM	T5 direct hex drive 36mm	615 575 1775	
		T5-HX041MM	T5 direct hex drive 41mm	615 575 1515	
	10	T5-ALCAS	Extended Alco arm and sleeve	615 812 8640	
	T8	1	T8-ALCA	Extended Alco Arm	615 812 8390
2		T8-03-STUBBY-A	Stubby reaction Arm	615 565 7250	
3		T8-ALCS-A	Steel Sleeve assembly	615 548 2645	
5		T8-03A	Standard reaction arm	615 398 9985	
7		T8-SQ100	T8 step down direct sq drive 1"	615 575 2815	
		T8-SQ208	T8 step up direct sq drive 2 1/2"	615 575 2865	
8		T8-HX204	T8 direct hex drive male 2-1/4"	615 575 3030	
10		T8-ALCAS	Extended Alco arm and sleeve	615 812 8400	
T10		1	T10-ALCSA	Extended Alco Arm	615 812 8600
		2	T10-ALCS-A	Steel Sleeve assembly	615 548 2685
	5	T10-03A	Standard reaction arm	615 398 9995	
	7	T10-SQ100	T10 step down direct sq drive 1"	615 575 2825	
		T10-SQ208	T10 step up direct sq drive 2 1/2"	615 575 2875	
	8	T10-HX106	T10 direct hex drive 1-3/8"	615 575 2235	
		T10-HX114	T10 direct hex drive 1-7/8"	615 575 2275	
		T10-HX032MM	T10 direct hex drive 32mm	615 575 2315	
		T10-HX036MM	T10 direct hex drive 36mm	615 575 1585	
		T10-HX041MM	T10 direct hex drive 41mm	615 575 2325	
		T10-HX046MM	T10 direct hex drive 46mm	615 575 2905	
	10	T10-ALCAS	Extended Alco arm and sleeve	615 812 8650	
T25	1	T25-ALCA	Extended Alco Arm	615 812 8610	
	2	T25-ALCS-A	Steel Sleeve assembly	615 548 2695	
	5	T25-03A	Standard reaction arm	615 399 0015	
	7	T25-SQ108	T25 step down direct sq drive 1 1/2"	615 575 2835	
	10	T25-ALCAS	Extended Alco arm and sleeve	615 812 8660	





LP SERIES ACCESSORIES



MODEL	ITEM	REF	DESCRIPTION	PART NUMBER
LP2	1	LP2-ALC-A	Extended Alco Arm	615 812 8470
	2	LP2-FF	Reaction Paddle	615 812 8750
	3		Hex reducer	See p 54
LP4	1	LP4-ALC-A	Extended Alco Arm	615 812 8480
	2	LP4-FF	Reaction Paddle	615 812 8760
	3		Hex reducer	See p 54
LP8	1	LP8-ALC-A	Extended Alco Arm	615 812 8490
	2	LP8-FF	Reaction Paddle	615 812 8770
	3		Hex reducer	See p 54
LP16	1	LP16-ALC-A	Extended Alco Arm	615 812 8500
	2	LP16-FF	Reaction Paddle	615 812 8780
	3		Hex reducer	See p 54

ON DEMAND ACCESSORIES	
4	Square drive adapter
5	Stack socket
6	Hex drive adapter

STEEL TWINLINE HOSE ASSEMBLY

DESCRIPTION	SIZE		PART NUMBER
	ft	m	
10 ft / 3 m steel twinline hose assy	10	3	615 812 2420
15 ft / 4.5 m steel twinline hose assy	15	4.5	615 812 2430
20 ft / 6 m steel twinline hose assy	20	6	615 812 2440
25 ft / 7.5 m steel twinline hose assy	25	7.5	615 812 2450
30 ft / 9 m steel twinline hose assy	30	9	615 812 2460
40 ft / 12 m steel twinline hose assy	40	12	615 812 2470
50 ft / 15 m steel twinline hose assy	50	15	615 812 2480
100 ft / 30 m steel twinline hose assy	100	30	615 812 2490



OIL

DESCRIPTION	PART NUMBER
Hydraulic oil cp (5l-1,32gal)	615 812 2900



HYDRAULIC BOLTING

Accessories - Hydraulic tools

LP SERIES ACCESSORIES REDUCERS



MODEL	DESCRIPTION	PART NUMBER	MODEL	DESCRIPTION	PART NUMBER		
LP2	Reducer LP2 36mm_32mm - 1-5/16" _1-1/4"	615 820 7380	LP8	Reducer LP8 65mm_50mm - 2-9/16" _1-31/32"	615 820 7850		
	Reducer LP2 41mm_24mm - 1-5/8" _15/16"	615 820 7920		Reducer LP8 65mm_60mm - 2-9/16" _2-3/8"	615 820 7520		
	Reducer LP2 41mm_30mm - 1-5/8" _1-13/16"	615 820 7720		Reducer LP8 70mm_55mm - 2-3/4" _2-1/6"	615 820 7860		
	Reducer LP2 41mm_32mm - 1-5/8" _1-1/4"	615 820 7390		Reducer LP8 70mm_65mm - 2-3/4" _2-9/16"	615 820 7530		
	Reducer LP2 46mm_30mm - 1-13/16" _1-13/16"	615 820 7930		Reducer LP8 75mm_55mm - 2-15/16" _2-1/6"	615 820 8020		
	Reducer LP2 46mm_32mm - 1-13/16" _1-1/4"	615 820 7730		Reducer LP8 75mm_60mm - 2-15/16" _2-3/8"	615 820 7870		
	Reducer LP2 46mm_36mm - 1-13/16" _1-5/12"	615 820 7400		Reducer LP8 75mm_70mm - 2-15/16" _2-3/4"	615 820 7540		
	Reducer LP2 50mm_36mm - 1-31/32" _1-5/12"	615 820 7740		Reducer LP8 80mm_50mm - 3-3/20" _1-31/32"	615 820 8160		
	Reducer LP2 50mm_41mm - 1-31/32" _1-5/8"	615 820 7410		Reducer LP8 80mm_55mm - 3-3/20" _2-1/6"	615 820 8130		
	Reducer LP2 55mm_36mm - 2-1/6" _1-5/12"	615 820 8060		Reducer LP8 80mm_60mm - 3-3/20" _2-3/8"	615 820 8030		
	Reducer LP2 55mm_41mm - 2-1/6" _1-5/8"	615 820 7940		Reducer LP8 80mm_65mm - 3-3/20" _2-9/16"	615 820 7880		
	Reducer LP2 55mm_46mm - 2-1/6" _1-13/16"	615 820 7750		Reducer LP8 80mm_75mm - 3-3/20" _2-15/16"	615 820 7550		
	Reducer LP2 55mm_50mm - 2-1/6" _1-31/32"	615 820 7420		Reducer LP8 85mm_55mm - 3-9/26" _2-1/6"	615 820 8170		
	Reducer LP2 60mm_36mm - 2-3/8" _1-5/12"	615 820 8070		Reducer LP8 85mm_60mm - 3-9/26" _2-3/8"	615 820 8140		
	Reducer LP2 60mm_41mm - 2-3/8" _1-5/8"	615 820 7950		Reducer LP8 85mm_65mm - 3-9/26" _2-9/16"	615 820 8040		
	Reducer LP2 60mm_46mm - 2-3/8" _1-13/16"	615 820 7760		Reducer LP8 85mm_70mm - 3-9/26" _2-3/4"	615 820 7890		
	Reducer LP2 60mm_55mm - 2-3/8" _2-1/6"	615 820 7430		Reducer LP8 85mm_80mm - 3-9/26" _3-3/20"	615 820 7560		
	LP4	Reducer LP4 46mm_36mm - 1-13/16" _1-5/12"		615 820 7770	LP16	Reducer LP16 105mm_90mm - 4-1/8" _3-9/16"	615 820 7630
		Reducer LP4 46mm_41mm - 1-13/16" _1-5/8"		615 820 7440		Reducer LP16 110mm_95mm - 4-5/16" _3-3/4"	615 820 7640
		Reducer LP4 50mm_36mm - 1-31/32" _1-5/12"		615 820 7780		Reducer LP16 115mm_100mm	615 820 7650
Reducer LP4 50mm_46mm - 1-31/32" _1-13/16"		615 820 7450	Reducer LP16 80mm_65mm - 3-3/20" _2-9/16"	615 820 7590			
Reducer LP4 55mm_32mm - 2-1/6" _1-1/4"		615 820 8080	Reducer LP16 85mm_70mm - 3-9/26" _2-3/4"	615 820 7600			
Reducer LP4 55mm_36mm - 2-1/6" _1-5/12"		615 820 7960	Reducer LP16 90mm_75mm - 3-9/16" _2-15/16"	615 820 7610			
Reducer LP4 55mm_41mm - 2-1/6" _1-5/8"		615 820 7790	Reducer LP16 95mm_75mm - 3-3/4" _2-15/16"	615 820 7910			
Reducer LP4 55mm_50mm - 2-1/6" _1-31/32"		615 820 7460	Reducer LP16 95mm_80mm - 3-3/4" _3-3/20"	615 820 7620			
Reducer LP4 60mm_36mm - 2-3/8" _1-5/12"		615 820 8090	Reducer LP32 120mm_95mm	615 820 7660			
Reducer LP4 60mm_46mm - 2-3/8" _1-13/16"		615 820 7970	Reducer LP32 130mm_105mm - 5-1/8" _4-1/8"	615 820 7670			
Reducer LP4 60mm_50mm - 2-3/8" _1-31/32"		615 820 7800	Reducer LP32 135mm_110mm - 5-5/16" _4-5/16"	615 820 7680			
Reducer LP4 60mm_55mm - 2-3/8" _2-1/6"		615 820 7470	Reducer LP32 140mm_115mm	615 820 7690			
Reducer LP4 65mm_46mm - 2-9/16" _1-13/16"		615 820 8100	Reducer LP32 145mm_120mm	615 820 7700			
Reducer LP4 65mm_50mm - 2-9/16" _1-31/32"		615 820 7980	Reducer LP32 155mm_130mm	615 820 7710			
Reducer LP4 65mm_55mm - 2-9/16" _2-1/6"		615 820 7810					
Reducer LP4 65mm_60mm - 2-9/16" _2-3/8"		615 820 7480					
Reducer LP4 70mm_55mm - 2-3/4" _2-1/6"		615 820 7990					
Reducer LP4 70mm_60mm - 2-3/4" _2-3/8"		615 820 7820					
Reducer LP4 70mm_65mm - 2-3/4" _2-9/16"		615 820 7490					
Reducer LP4 75mm_50mm - 2-15/16" _1-31/32"		615 820 8110					
Reducer LP4 75mm_55mm - 2-15/16" _2-1/6"		615 820 8000					
Reducer LP4 75mm_60mm - 2-15/16" _2-3/8"		615 820 7830					
Reducer LP4 75mm_65mm - 2-15/16" _2-9/16"		615 820 7500					
Reducer LP4 80mm_50mm - 3/3/20" _1-31/32"		615 820 8150					
Reducer LP4 80mm_55mm - 3/3/20" _2-1/6"		615 820 8120					
Reducer LP4 80mm_65mm - 3/3/20" _2-9/16"		615 820 8010					
Reducer LP4 80mm_70mm - 3/3/20" _2-3/4"		615 820 7840					
Reducer LP4 80mm_75mm - 3-3/20" _2-15/16"		615 820 7510					

