



Fasteners

Product Grading



Production

High performance industrial tooling designed for continuous use applications on machine tools where repeatability and long tool life are of critical importance.



Professional

Industrial tooling that has enhanced features and benefits demanded by craftsmen and professional users.



Industrial

Designed for regular use in industrial applications. Manufactured to stringent quality levels and international standards.



Workshop

Standard quality tooling for use by tradesmen and generally industrial use.



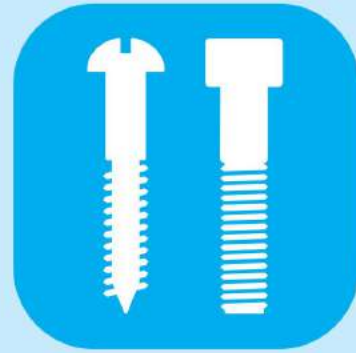
Maintenance

Products designed for general maintenance of machines, workshops, garages and some household applications.



Home Improver

DIY quality tooling. Designed for home use and light industrial applications.



Product Groups 600 - 690

Contents

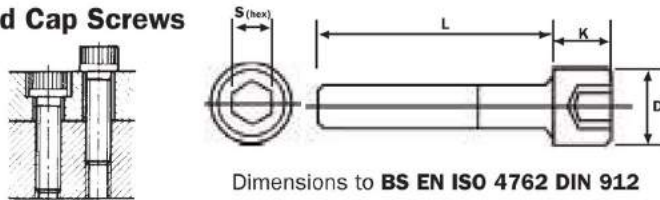
Description	Group	Page
Circlips	649	662
Dowel Pins	650	662 - 663
Fastener Assortments	615	651 - 658
Hose Clips & Pipe Clips	662	664 - 665
Rivet Nuts	644	661
Screwed Studding	670	660
Socket Head Button Screws	604	648 - 649

Description	Group	Page
Socket Head Cap Screws	600	638 - 643
Countersunk Screws	604	646 - 647
Flange Button Screws	604	649
Shoulder Screws	610	650
Socket Set Screws	602	644 - 645
Thread Repair	620	659

QUALFAST

Socket Head Cap Screws - Metric

High Grade Alloy Steel to **BS EN ISO 898/1 Grade 12.9**. Suitable for all high tensile applications. Maximum operating temperature (unplated): 300°C.



Thread Size	Dimensions (mm)		
	dk	k	S (hex)
M1.6	3.00	1.6	1.5
M2	3.80	2.0	1.5
M2.5	4.50	2.5	2.0
M3	5.68	3.0	2.5
M4	7.22	4.0	3.0
M5	8.72	5.0	4.0

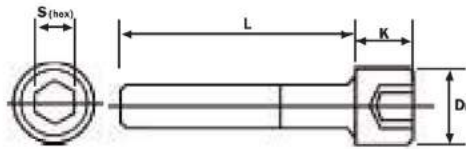
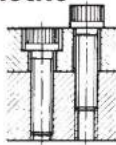
Dimensions to **BS EN ISO 4762 DIN 912**

FASTENERS

M1.6 to M5			ISO Metric - Self Colour	ISO Metric - Self Colour	ISO Metric BZP	ISO Metric A2 Stainless
Size	L	Box Qty	Standard (Self-Colour) Order Code QFT-600	Thread to Head (Self-Colour) Order Code QFT-600	Bright Zinc Plated (BZP) Order Code QFT-600	A2 Stainless Steel Order Code QFT-600
M1.6	4	200	-	-0905F	-	-
	6	200	-	-0906G	-	-
	3	200	-	-0912N	-	-
	4	200	-	-0913P	-	-1440C
	5	200	-	-0914Q	-	-1440E
M2	6	200	-	-0915R	-	-1440G
	8	200	-	-0916S	-	-1440J
	10	200	-	-0917T	-	-1440L
	12	200	-	-0918V	-	-1440N
	16	200	-	-	-	-1440S
20	200	-	-	-	-	
M2.5	4	200	-	-0920T	-	-1442C
	5	200	-	-0920X	-	-1442E
	6	200	-	-0921Y	-	-1442G
	8	200	-	-0922Z	-	-1442J
	10	200	-	-0924A	-	-1442L
	12	200	-	-0925B	-	-1442N
	16	200	-	-0925R	-	-1442S
	20	200	-	-0926F	-	-1442X
	4	200	-	-	-	-
	5	200	-	-0927D	-8048Y	-1445E
6	200	-	-0928E	-8049Z	-1445G	
M3	8	200	-	-0929F	-8050A	-1445J
	10	200	-	-0930G	-8052C	-1445L
	12	200	-	-0931H	-8054E	-1445N
	14	200	-	-0932J	-	-
	15	200	-	-0933K	-	-
	16	200	-	-0934L	-8056G	-1445S
	18	200	-	-0934M	-	-1445V
	20	200	-	-0935M	-8058J	-1445X
	22	200	-	-0935Z	-	-
	25	200	-0936N	-	-8059K	-1446B
30	200	-0937P	-	-8061R	-1446D	
35	200	-0938Q	-	-	-1446F	
40	200	-0939C	-	-8064G	-1446H	
45	200	-0939E	-	-8068M	-	
50	200	-0939F	-	-	-	
60	200	-	-	-	-	
M4	5	200	-	-0939R	-	-
	6	200	-	-0940S	-	-1448E
	8	200	-	-0941T	-8101Q	-1448G
	10	200	-	-0942V	-8102R	-1448J
	12	200	-	-0943W	-8103F	-1448L
	14	200	-	-0944X	-8104A	-1448N
	15	200	-	-0945Y	-	-
	16	200	-	-0946Z	-8105B	-1448Q
	18	200	-	-0947F	-	-
	20	200	-	-0948A	-8105T	-1448V
	22	200	-	-0948G	-	-
	25	200	-	-0949B	-8106C	-1448Z
	30	200	-0950C	-	-8106D	-1449B
	35	200	-0951D	-	-8106F	-
	40	200	-0952E	-	-8107A	-1449F
45	200	-0953F	-	-	-1449H	
50	200	-0954G	-	-8107J	-1449K	
55	200	-0954W	-	-	-	
60	200	-0954Z	-	-8107L	-	
65	200	-0955A	-	-	-	
70	200	-0955B	-	-	-	
75	200	-0955C	-	-	-	
80	200	-0955D	-	-	-	
90	200	-0955G	-	-	-	
100	200	-0955E	-	-	-	
M5	6	200	-	-0955H	-8108P	-1451C
	8	200	-	-0956J	-8108R	-1451E
	10	200	-	-0957K	-8109J	-1451G
	12	200	-	-0958L	-8110A	-1451J
	14	200	-	-0959M	-	-1451L
	15	200	-	-0960N	-	-
	16	200	-	-0961P	-8111B	-1451N
	18	200	-	-0962Q	-	-1451Q
	20	200	-	-0963R	-8111D	-1451S
	22	200	-	-0964S	-8111R	-
	25	200	-	-0965T	-8112C	-1451X
	30	200	-0966V	-4500A	-8113D	-1451Z
	35	200	-0967W	-4501B	-8114E	-1452B
	40	200	-0968X	-4502C	-8115F	-1452D
	45	200	-0969Y	-4503D	-8115G	-1452F
50	200	-0970Z	-4504E	-8116G	-1452H	
55	200	-0972A	-4505F	-8116R	-	
60	200	-0973B	-	-8117A	-1452M	

QUALFAST Socket Head Cap Screws - Metric

High Grade Alloy Steel to
BS EN ISO 898/1 Grade 12.9.
Suitable for all high tensile
applications.
Maximum operating temperature
(unplated): 300°C.


 Dimensions to **BS EN ISO 4762 DIN 912**


Thread Size	Dimensions (mm)		
	dk	k	S (hex)
M5	8.72	5.0	4.0
M6	10.22	6.0	5.0
M8	13.27	8.0	6.0
M10	16.27	10.0	8.0

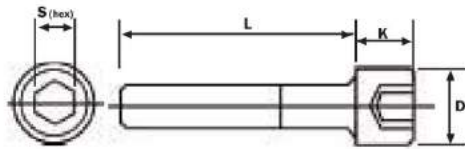
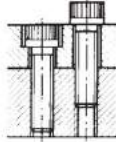
M5 to M10			ISO Metric - Self-Colour	ISO Metric - Self-Colour	ISO Metric - BZP	ISO Metric A2 Stainless	
Size	L	Box Qty	Standard (Self-Colour) Order Code QFT-600	Thread to Head (Self-Colour) Order Code QFT-600	Bright Zinc Plated (BZP) Order Code QFT-600	A2 Stainless Steel Order Code QFT-600	
M5 con't	65	200	-0974C	-	-8117J	-	
	70	200	-0975D	-	-8118J	-1452R	
	75	200	-0975K	-	-	-	
	80	200	-0975R	-	-	-1452W	
	85	200	-0975S	-	-	-	
	90	200	-0975T	-	-	-	
	100	200	-0975X	-	-8118T	-1453E	
	110	200	-0975Z	-	-	-	
	120	200	-0976A	-	-	-	
	130	200	-0976B	-	-	-	
	140	200	-0976C	-	-	-	
	150	200	-0976D	-	-	-	
	6	200	-	-	-0976F	-	-
	8	200	-	-	-0976E	-8119H	-1455C
	10	200	-	-	-0977F	-8119K	-1455E
12	200	-	-	-0978G	-8120A	-1455G	
14	200	-	-	-0979H	-	-1455J	
15	200	-	-	-0980J	-	-	
16	200	-	-	-0981K	-8121B	-1455L	
18	200	-	-	-0982L	-8121C	-	
20	200	-	-	-0983M	-8122C	-1455Q	
22	200	-	-	-0984N	-	-	
25	200	-	-	-0985P	-8123D	-1455V	
30	200	-	-	-0986Q	-8124E	-1455X	
35	200	-0987R	-	-	-8125A	-1455Z	
40	200	-0988S	-	-4521B	-8125F	-1456B	
45	200	-0989T	-	-4522C	-8126G	-1456D	
M6	50	200	-0990V	-4523D	-8127H	-1456F	
	55	200	-0991W	-	-8127J	-1456H	
	60	200	-0992X	-4524E	-8127K	-1456K	
	65	200	-0993Y	-	-8127L	-1456M	
	70	200	-0994Z	-4525F	-8127M	-1456P	
	75	200	-0996A	-	-8127N	-1456R	
	80	200	-0997B	-4526G	-8127P	-1456T	
	85	200	-0997C	-	-	-	
	90	200	-0998C	-	-8127R	-1456Y	
	100	200	-0999D	-	-8127T	-1457C	
	110	200	-1000E	-	-	-	
	120	200	-1001F	-	-8127V	-	
	130	200	-1001H	-	-	-	
	140	200	-1001K	-	-	-	
	150	200	-1001P	-	-	-	
160	200	-1001T	-	-	-		
170	200	-1001V	-	-	-		
200	200	-1001W	-	-	-		
10	200	-	-	-1002G	-8128J	-1459C	
12	200	-	-	-1003H	-8128K	-1459E	
14	200	-	-	-	-8128L	-1459G	
15	200	-	-	-1005K	-	-	
16	200	-	-	-1006L	-8129R	-1459J	
18	200	-	-	-1007M	-	-	
20	200	-	-	-1008N	-8130A	-1459N	
22	200	-	-	-1009P	-	-	
25	200	-	-	-1010Q	-8131B	-1459S	
30	200	-	-	-1011R	-8132C	-1459V	
35	200	-	-	-1012S	-8132R	-1459X	
40	200	-1013T	-4540A	-8133D	-8133D	-1459Z	
45	200	-1014V	-	-8134E	-8134E	-1460B	
50	100	-1015W	-4541B	-8135F	-8135F	-1460D	
55	100	-1016X	-	-8135G	-8135G	-1460F	
M8	60	100	-1017Y	-4542C	-8136G	-1460H	
	65	100	-1018Z	-	-8136T	-1460K	
	70	100	-1020A	-4543D	-8137R	-1460M	
	75	100	-1021B	-	-8138F	-1460P	
	80	100	-1022C	-4544E	-8138G	-1460R	
	85	100	-1023A	-	-	-	
	90	100	-1023D	-	-8138J	-1460W	
	100	100	-1024E	-	-8138L	-1461A	
	110	100	-1025F	-	-8138N	-1461C	
	120	100	-1026G	-	-	-1461E	
	130	100	-1027H	-	-	-	
	140	100	-1028J	-	-	-1461J	
	150	100	-1029K	-	-	-	
	160	100	-1030L	-	-	-	
	180	100	-1031M	-	-	-	
200	100	-1032N	-	-	-		
M10	10	100	-	-1033P	-	-	
	12	100	-	-1034Q	-	-	
	15	100	-	-1036S	-8139B	-1462V	
	16	100	-	-1037T	-8139G	-1462Z	
	18	100	-	-1038V	-	-	
20	100	-	-1039W	-8139T	-1463D		

PRODUCTS ARE ONLY AVAILABLE VIA YOUR DISTRIBUTOR



**Socket Head Cap Screws
- Metric**

High Grade Alloy Steel to
BS EN ISO 898/1 Grade 12.9.
Suitable for all high tensile
applications.
Maximum operating temperature
(unplated): 300°C.



Thread Size	Dimensions (mm)		
	dk	k	S (hex)
M10	16.27	10.0	8.0
M12	18.27	12.0	10.0
M14	21.33	14.0	12.0
M16	24.33	16.0	14.0

Dimensions to **BS EN ISO 4762 DIN 912**

FASTENERS

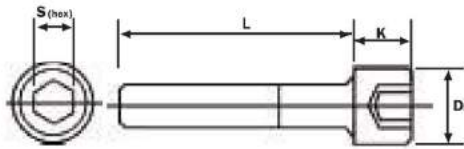
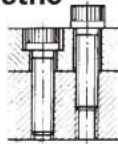
M10 to M16			ISO Metric - Self-Colour	ISO Metric - Self-Colour	ISO Metric BZP	ISO Metric A2 Stainless	
Size	L	Box Qty	Standard (Self-Colour)	Thread to Head (Self-Colour)	Bright Zinc Plated (BZP)	A2 Stainless Steel	
			Order Code QFT-600	Order Code QFT-600	Order Code QFT-600	Order Code QFT-600	
M10	25	100	-	-	-	-	
	30	100	-	-	-	-	
	35	100	-	-	-	-	
	40	100	-	-	-	-	
	45	100	-	-1046C	-1045B	-8140J	-1463P
	50	100	-	-1047D	-4560A	-8141A	-1463R
	55	100	-	-1048E	-4561B	-8141B	-1463T
	60	100	-	-1049F	-	-8141C	-1463W
	65	100	-	-1050G	-	-8142C	-1463Y
	70	100	-	-1051H	-4563D	-8142R	-1464A
	75	100	-	-1052J	-	-8142T	-1464C
	80	100	-	-1053K	-4564E	-8142U	-1464E
	90	100	-	-1054L	-	-8142V	-1464G
	100	100	-	-1055M	-	-8142W	-1464L
	110	100	-	-1056N	-	-8143A	-1464Q
	120	100	-	-1057P	-	-8142X	-1464S
	130	100	-	-1058Q	-	-	-1464V
	140	100	-	-1059R	-	-	-
150	100	-	-1060S	-	-	-1465A	
160	100	-	-	-	-	-	
180	100	-	-	-	-	-	
200	100	-	-	-	-	-	
220	100	-	-	-	-	-	
240	100	-	-	-	-	-	
250	100	-	-	-	-	-	
300	100	-	-	-	-	-	
M12	12	100	-	-1064X	-	-	
	15	100	-	-	-	-	
	16	100	-	-1068A	-	-	
	20	100	-	-1070C	-1070C	-8143B	-1467C
	25	100	-	-1072E	-1072E	-8143C	-1467G
	30	100	-	-1073F	-1073F	-8144A	-1467J
	35	100	-	-1074G	-1074G	-8144D	-1467L
	40	50	-	-1075H	-1075H	-8144E	-1467N
	45	50	-	-1076J	-1076J	-8145F	-1467Q
	50	50	-	-1077K	-1077K	-8145T	-1467S
	55	50	-	-1078L	-	-8146H	-1467V
	60	50	-	-1079M	-4580A	-8146J	-1467X
	65	50	-	-1080N	-	-	-1467Z
	70	50	-	-1081P	-4581B	-	-1468B
	75	50	-	-1082Q	-	-8149A	-1468D
	80	50	-	-1083R	-	-	-1468F
	85	100	-	-1083S	-4582C	-	-
	90	50	-	-1084S	-	-8150G	-1468K
100	50	-	-1085T	-	-	-1468P	
110	50	-	-1086V	-	-	-1468R	
120	50	-	-1087W	-	-	-1468T	
130	50	-	-1088X	-	-	-1468W	
140	50	-	-1089Y	-	-	-	
150	50	-	-1090Z	-	-	-	
160	50	-	-	-	-	-	
180	50	-	-	-	-	-	
200	50	-	-	-	-	-	
220	50	-	-	-	-	-	
240	50	-	-	-	-	-	
260	50	-	-	-	-	-	
280	100	-	-	-	-	-	
300	50	-	-	-	-	-	
M16	20	25	-	-1111E	-	-	
	22	25	-	-	-	-	
	25	25	-	-1112X	-	-1473G	
	30	25	-	-1113Y	-1113Y	-8170J	-1473J
	35	25	-	-1114Z	-1114Z	-8171K	-1473L
	40	25	-	-1116A	-1116A	-8172L	-1473N
	45	25	-	-1117B	-1117B	-8173M	-
	50	25	-	-1118C	-1118C	-8174N	-1473S
	55	25	-	-1119D	-1119D	-8175P	-
	60	25	-	-1120E	-1120E	-8176Q	-1473X
	65	25	-	-1121F	-	-8177R	-1473Z
	70	25	-	-1122G	-	-8178S	-1474B
	75	25	-	-1123H	-	-	-1474D
	80	25	-	-1124J	-	-	-1474F
	85	25	-	-1125A	-	-	-
	90	25	-	-1125K	-	-	-
	100	25	-	-1126L	-	-	-1474P
	110	25	-	-1127M	-	-	-
120	25	-	-1128N	-	-	-	
130	25	-	-1129P	-	-	-1474W	
140	25	-	-1130Q	-	-	-1474Y	
150	25	-	-1131R	-	-	-	



SOCKET HEAD CAP SCREWS

QUALFAST Socket Head Cap Screws - Metric

High Grade Alloy Steel to **BS EN ISO 898/1 Grade 12.9.** Suitable for all high tensile applications. Maximum operating temperature (unplated): 300°C.



Thread Size	Dimensions (mm)		
	dk	k	S (hex)
M16	24.33	16.0	14.0
M18	27.00	18.0	16.0
M20	30.33	20.0	17.0
M24	36.00	24.0	20.0

Dimensions to **BS EN ISO 4762 DIN 912**

M16 to M24			ISO Metric - Self-Colour	ISO Metric - Self-Colour	ISO Metric BZP	ISO Metric A2 Stainless
Size	L	Box Qty	Standard (Self-Colour) Order Code QFT-600	Thread to Head (Self-Colour) Order Code QFT-600	Bright Zinc Plated (BZP) Order Code QFT-600	A2 Stainless Steel Order Code QFT-600
M20	30	25	-	-1151M	-	-1480A
	35	25	-	-1152N	-	-
	40	25	-	-1153P	-	-1480E
	45	25	-	-1154Q	-	-
	50	25	-	-1155R	-	-1480J
	55	25	-	-1156S	-	-
	60	25	-	-1157T	-	-
	65	25	-	-1158V	-	-
	70	25	-	-1159W	-	-1480S
	75	25	-1160X	-	-	-
	80	15	-1161Y	-	-	-
	90	15	-1162Z	-	-	-
	100	15	-1164A	-	-	-1481D
	110	15	-1165B	-	-	-
	120	15	-1166C	-	-	-
130	15	-1167D	-	-	-	
140	15	-1168E	-	-	-	
150	15	-1169F	-	-	-	
160	15	-1170G	-	-	-	
180	15	-1171H	-	-	-	
200	15	-1172J	-	-	-	
220	15	-	-	-	-	
240	15	-	-	-	-	
260	15	-	-	-	-	
280	15	-	-	-	-	
300	15	-	-	-	-	
M24	40	15	-	-1180S	-	-
	45	25	-	-1181T	-	-
	50	15	-	-1182V	-	-
	55	25	-	-1183W	-	-
	60	15	-	-1184X	-	-
	65	25	-	-1184Y	-	-
	70	10	-	-1186Z	-	-
	75	10	-	-1188A	-	-1485Q
	80	10	-	-1189B	-	-
	90	10	-1190C	-	-	-
	100	10	-1191D	-	-	-
	110	10	-1192E	-	-	-
	120	10	-1193F	-	-	-
	130	10	-1194G	-	-	-
	140	10	-1195H	-	-	-
150	10	-1196J	-	-	-	
160	10	-1197K	-	-	-	
180	10	-1198L	-	-	-	
200	10	-1199M	-	-	-	
220	10	-1200N	-	-	-	
240	10	-1201P	-	-	-	
260	10	-1202Q	-	-	-	
280	10	-1203R	-	-	-	
300	10	-1204S	-	-	-	

FASTENERS

Stainless Fastener Assortments

A2 Stainless Steel Socket Cap Screw Kit

Contents: 5 x 12, 5 x 16, 5 x 20, 6 x 12, 6 x 16, 6 x 20, 6 x 25, 8 x 16, 8 x 20 and 8 x 25.



Type	Average Quantity	Weight each	Order Code QFT-615
Metric	250	2.0kg	-4380K

A2 Stainless Steel Socket Button Screw Kit

Contents: M5 x 12, M5 x 16, M5 x 20, M6 x 12, M6 x 16, M6 x 20, M6 x 25, M8 x 20, M8 x 25 and M8 x 30.



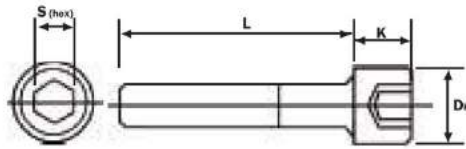
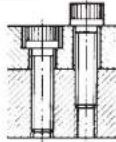
Type	Average Quantity	Weight each	Order Code QFT-615
Metric	310	1.5kg	-4420K

PRODUCTS ARE ONLY AVAILABLE VIA YOUR DISTRIBUTOR



Socket Head Cap Screws - Inch

High Grade Alloy Steel to **BS EN ISO 898/1 Grade 12.9**. Suitable for all high tensile applications. Maximum operating temperature (unplated): 300°C.



Thread Size	Dimensions (mm)		
	dk	K	S (hex)
2	0.140"	0.108"	1/16"
4	0.183"	0.122"	5/64"
5	0.205"	0.125"	3/32"
6	0.226"	0.138"	3/32"
8	0.270"	0.164"	1/8"
10	0.312"	0.190"	5/32"
1/4"	0.375"	0.250"	3/16"
5/16"	0.437"	0.312"	7/32"

Dimensions to **ANSI B 18.3 - 1936 & 1960 Series**

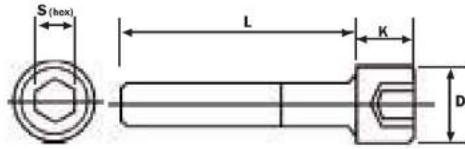
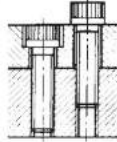
FASTENERS

No.2 to 5/16"			UNC - Self Colour	UNC A2 Stainless Steel	UNF - Self Colour	UNF A2 Stainless Steel
Size	L	Box Qty	Standard (Self-Colour) Order Code QFT-601	Order Code QFT-601	Standard (Self-Colour) Order Code QFT-601	Order Code QFT-601
2	1/4"	200	-	-	-	-
	1/2"	200	-	-	-	-
4	1/4"	200	-1301B	-	-	-
	3/8"	200	-1303D	-1755H	-	-
	1/2"	200	-1304E	-1755M	-	-
	5/8"	200	-1305F	-1755P	-	-
	3/4"	200	-1306G	-1755R	-	-
5	7/8"	200	-1307H	-	-	-
	1"	200	-	-	-	-
	3/8"	200	-1310L	-	-	-
6	1/2"	200	-1311M	-	-	-
	1/4"	200	-1315R	-1759C	-	-
	3/8"	200	-1317T	-1759G	-	-
	1/2"	200	-1318V	-1759L	-	-
	5/8"	200	-1319W	-1759N	-	-
8	3/4"	200	-1320X	-1759Q	-	-
	1"	200	-1322Z	-1759V	-	-
	1 1/2"	200	-	-	-	-
	1/4"	200	-1327D	-	-	-
	3/8"	200	-1328E	-1761G	-	-
10	1/2"	200	-1329F	-1761L	-	-
	5/8"	200	-1330G	-1761N	-	-
	3/4"	200	-1331H	-1761Q	-	-
	1"	200	-1333K	-1761V	-	-
	1 1/4"	200	-1334L	-	-	-
10	1 1/2"	200	-1335M	-1762D	-	-
	1/4"	200	-1337P	-	-1553D	-
	3/8"	200	-1338Q	-1763H	-1555F	-1665G
	1/2"	200	-1339R	-1763M	-1556G	-1665L
	5/8"	200	-1340S	-	-1557H	-
	3/4"	200	-1341T	-1763R	-1558J	-1665Q
	7/8"	200	-1342V	-	-1559K	-
	1"	200	-1343W	-1763W	-1560L	-1665V
	1 1/4"	200	-1344X	-	-1561M	-
	1 1/2"	200	-1345Y	-	-1562N	-1666D
10	1 3/4"	200	-1346Z	-	-1563P	-
	2"	200	-1348A	-	-1564Q	-
	2 1/4"	200	-	-	-	-
	2 1/2"	200	-	-	-	-
	1/4"	200	-1349B	-	-	-
	3/8"	200	-1350C	-1766C	-1566S	-1668B
	1/2"	200	-1351D	-1766G	-1567T	-1668F
	5/8"	200	-1352E	-1766J	-1568V	-
	3/4"	200	-1353F	-1766L	-1569W	-1668K
	7/8"	200	-1354G	-	-1570X	-
10	1"	200	-1355H	-1766Q	-1571Y	-1668P
	1 1/4"	200	-1356J	-	-1572Z	-
	1 1/2"	200	-1357K	-1766Z	-1574A	-1668W
	1 3/4"	200	-1358L	-	-1575B	-
	2"	200	-1359M	-1767D	-1576C	-
	2 1/4"	200	-1360N	-	-1577D	-
	2 1/2"	200	-1361P	-	-1578E	-
	3"	200	-1363R	-	-	-
	1/2"	200	-1365T	-1769F	-1579F	-1671D
	5/8"	200	-1366V	-	-1580G	-
10	3/4"	200	-1367W	-1769K	-1581H	-
	7/8"	200	-1368X	-	-1582J	-
	1"	200	-1369Y	-1769P	-1583K	-1671M
	1 1/4"	200	-1370Z	-1769T	-1584L	-
	1 1/2"	200	-1372A	-1769W	-1585M	-
	1 1/4"	200	-1373B	-	-1586N	-
	2"	200	-1374C	-1770A	-1587P	-
	2 1/4"	200	-1375D	-	-1588Q	-
	2 1/2"	200	-1376E	-1770E	-1589R	-
	2 3/4"	200	-1377F	-	-	-
5/16	3"	200	-1378G	-	-	-
	3 1/2"	200	-1379H	-	-	-
	4"	200	-1380J	-	-	-



QUALFAST Socket Head Cap Screws -Inch

High Grade Alloy Steel to **BS EN ISO 898/1 Grade 12.9**. Suitable for all high tensile applications. Maximum operating temperature (unplated): 300°C.



Dimensions to **ANSI B 18.3 - 1936 & 1960 Series**



Thread Size	Dimensions (mm)		
	dk	k	S (hex)
3/8"	0.562"	0.375"	5/16"
7/16"	0.656"	0.500"	3/8"
1/2"	0.750"	0.500"	3/8"
5/8"	0.865"	0.620"	1/2"
3/4"	0.990"	0.745"	9/16"
7/8"	1.312"	0.875"	3/4"
1"	1.312"	1.000"	5/8"

3/8" to 1"			UNC - Self Colour	UNC A2 Stainless Steel	UNF Self Colour	UNF A2 Stainless Steel
Size	L	Box Qty	Standard (Self-Colour)	A2 Stainless Steel	Standard (Self-Colour)	A2 Stainless Steel
			Order Code QFT-601	Order Code QFT-601	Order Code QFT-601	Order Code QFT-601
1/2"		100	-1381K	-	-1591T	-
5/8"		100	-1382L	-	-	-
3/4"		100	-1383M	-1772E	-1593W	-
7/8"		100	-	-	-1594X	-
1"		100	-1385P	-1772J	-1595Y	-
1 1/4"		100	-1386Q	-1772N	-1596Z	-
1 1/2"		100	-1387R	-1772S	-1598A	-1673P
1 3/4"		50	-1388S	-	-1599B	-
2"		50	-1389T	-1772X	-1600C	-
3/8						
2 1/4"		50	-1390V	-	-1601D	-
2 1/2"		50	-1391W	-1773B	-1602E	-
2 3/4"		50	-1392X	-	-	-
3"		50	-1393Y	-	-1603F	-
3 1/4"		50	-1394Z	-	-	-
3 1/2"		50	-1396A	-	-1605H	-
4"		50	-1397B	-	-	-
4 1/2"		50	-1398C	-	-	-
5"		50	-1399D	-	-	-
1"		50	-1401F	-	-1606J	-
1 1/4"		50	-1402G	-	-1607K	-
1 1/2"		50	-1403H	-	-1608L	-
7/16						
1 3/4"		50	-1404J	-	-1609M	-
2"		50	-1405K	-	-1610N	-
2 1/2"		50	-1407M	-	-	-
3/4						
3/4"		50	-1408N	-	-	-
1"		50	-1410Q	-	-1613R	-
1 1/4"		50	-1411R	-	-1614S	-
1 1/2"		50	-1412S	-1777N	-1615T	-
1 3/4"		50	-1413T	-	-1616V	-
2"		50	-1414V	-1777S	-1617W	-
1/2						
2 1/4"		25	-1415W	-	-1618X	-
2 1/2"		25	-1416X	-	-1619Y	-
2 3/4"		25	-1417Y	-	-	-
3"		25	-1418Z	-1778B	-1622A	-
3 1/2"		25	-1421B	-	-1623B	-
4"		25	-1422C	-	-1624C	-
4 1/2"		25	-1423D	-	-	-
5 1/2"		25	-1425F	-	-	-
6"		25	-1426G	-	-	-
1 1/4"		25	-1429K	-	-1625D	-
1 1/2"		25	-1430L	-	-1626E	-
1 3/4"		25	-1431M	-	-	-
2"		25	-1433P	-	-1628G	-
2 1/4"		25	-1434Q	-	-	-
2 1/2"		25	-1435R	-	-1630J	-
5/8						
2 3/4"		25	-1436S	-	-	-
3"		25	-1437T	-	-1631K	-
3 1/4"		25	-1438V	-	-	-
3 1/2"		25	-1439W	-	-	-
4"		25	-1440X	-	-1633B	-
5"		25	-1442Z	-	-	-
1 1/2"		25	-1452J	-	-	-
1 3/4"		25	-1453K	-	-	-
2"		25	-1454L	-	-1635P	-
2 1/4"		25	-1455M	-	-	-
2 1/2"		25	-1456N	-	-1642C	-
3/4						
2 3/4"		25	-1457P	-	-	-
3"		25	-1458Q	-	-1644E	-
3 1/2"		25	-1460S	-	-	-
4"		25	-1461T	-	-	-
5"		25	-1463W	-	-	-
6"		25	-1464X	-	-	-
1						
2"		10	-1496E	-	-	-
4"		10	-1498G	-	-	-

FASTENERS

PRODUCTS ARE ONLY AVAILABLE VIA YOUR DISTRIBUTOR



Socket Set Screws

High tensile alloy steel. **Grade 14.9.**

Plain Cup - DIN916

For use against hardened shafts. Ideal for use in ductile castings such as zinc, aluminium etc. where high tightening torques are not practical.


Thread Size	S (hex)
M2	1.0
M2.5	1.0
M3	1.5
M4	2.0
M5	2.5
M6	3.0

Knurled Cup - DIN 916

High tensile alloy steel. **Grade 14.9.**




For quick and permanent location of pulleys, collars and gears on shafts. Will hold fast even in poorly tapped holes. Interrupted profile of clamping face resists loosening due to vibration.

Sizes above M6 are generally counterbored to provide maximum clamping efficiency.



Thread Size	S (hex)
M3	1.5
M4	2.0
M5	2.5
M6	3.0

FASTENERS

M2 to M6			ISO Metric - Self Colour	ISO Metric A2 Stainless Steel	ISO Metric - Self Colour	
						
Size	L	Box Qty	Order Code	Order Code	Order Code	
			QFT-602	QFT-602	QFT-602	
M2	2.5	200	-	-	-	
	3	200	-3052C	-5371Y	-	
	4	200	-3055F	-	-	
	5	200	-3056G	-	-	
	6	200	-3059K	-	-	
	8	200	-3061M	-	-	
	10	200	-3063P	-	-	
	12	200	-	-	-	
	M2.5	3	200	-3065R	-5372Y	-
		4	200	-3067T	-	-
		5	200	-3069W	-	-
		6	200	-3071Y	-5373B	-
M3	10	200	-3073A	-5373D	-	
	3	200	-3079F	-5373Y	-3077D	
	4	200	-	-5373Z	-3080G	
	5	200	-3085M	-5374A	-3083K	
	6	200	-	-5374B	-3088Q	
	8	200	-	-5374C	-3093W	
	10	200	-3103F	-5374D	-3099B	
	12	200	-3108L	-5374E	-3104G	
	16	200	-3117X	-5374G	-3114S	
	20	200	-3118G	-	-	
M4	25	200	-3118Z	-	-	
	30	200	-	-	-	
	4	200	-3122A	-5374Z	-3119Y	
	5	200	-3127F	-5375A	-3123B	
	6	200	-3132L	-5375B	-3128G	
	8	200	-3137R	-5375C	-3133M	
	10	200	-3142X	-5375D	-3138S	
	12	200	-3147M	-5375E	-3143Y	
	16	200	-3156L	-5375G	-3154J	
	20	200	-3163T	-5375J	-3159P	
M5	25	200	-3165H	-5375L	-3164V	
	30	200	-	-5375M	-	
	5	200	-3168Z	-5376A	-3166X	
	6	200	-3174E	-5376B	-3170A	
	8	200	-3179K	-5376C	-3175F	
	10	200	-3184Q	-5376D	-3180L	
	12	200	-3189W	-5376E	-3185R	
	15	200	-	-	-3190X	
	16	200	-3200G	-5376G	-3196C	
	20	200	-3205M	-5376J	-3201H	
M6	25	200	-3209R	-5376L	-3206N	
	30	200	-3211Y	-5376M	-3211T	
	35	200	-	-5376N	-	
	6	200	-3218A	-5377B	-3214X	
	8	200	-3223F	-5377C	-3219B	
	10	200	-3228L	-5377D	-3224G	
	12	200	-3233R	-5377E	-3229M	
	15	200	-	-	-3234S	
	16	200	-3244C	-5377G	-3239Y	
	20	200	-3249H	-5377J	-3245D	
M8	25	200	-3254N	-5377L	-3250J	
	30	200	-3259T	-5377M	-3255P	
	35	200	-3264Z	-5377N	-3260V	
	40	200	-	-5377P	-3266A	
	45	200	-	-5377Q	-3271F	
	50	200	-	-	-3275K	
	8	200	-3284V	-5378C	-3280Q	
	10	200	-3290A	-5378D	-3285W	
	12	200	-3294E	-5378E	-3291B	
	15	200	-	-	-3296G	
16	200	-3305R	-5378G	-3301M		
20	200	-3310X	-5378J	-3306S		

CONTINUED ON NEXT PAGE...



QUALFAST

Socket Set Screws

High tensile alloy steel. **Grade 14.9.**

Plain Cup - DIN 916

For use against hardened shafts. Ideal for use in ductile castings such as zinc, aluminium etc. where high tightening torques are not practical.

SOCKET SET SCREWS

GROUP 602

Knurled Cup - DIN 916

High tensile alloy steel. **Grade 14.9.**

For quick and permanent location of pulleys, collars and gears on shafts. Will hold fast even in poorly tapped holes.

Interrupted profile of clamping face resists loosening due to vibration.

Sizes above M6 are generally counterbored to provide maximum clamping efficiency.

Thread Size	S (hex)
M8	4.0
M10	5.0
M12	6.0
M16	8.0
M24	12.0

Thread Size	S (hex)
M8	4.0
M10	5.0
M12	6.0
M16	8.0
M20	10.0
M24	12.0

			ISO Metric - Self Colour	ISO Metric A2 Stainless Steel	ISO Metric - Self Colour
Size	L	Box Qty	Order Code QFT-602	Order Code QFT-602	Order Code QFT-602
M8	25	200	-3316C	-5378L	-3311Y
	30	-	-	-5378M	-3317D
	35	200	-3326N	-5378N	-3322J
	40	200	-3331T	-5378P	-3327P
	50	200	-3342E	-5378R	-3338A
M10	10	200	-3347K	-5380D	-3343F
	12	200	-3352Q	-5380E	-3348L
	15	-	-	-	-3353R
	16	200	-3363B	-5380G	-3358X
	20	200	-3368G	-5380J	-3364C
M12	25	200	-3373M	-5380L	-3369H
	30	-	-	-	-3374N
	35	-	-	-	-
	40	200	-3389D	-5380P	-3384Z
	45	-	-	-	-
M12	50	200	-3398F	-5380R	-3395K
	12	200	-3403T	-5381E	-3399P
	16	200	-3414E	-5381G	-3410A
	20	200	-3419K	-5381J	-3415F
	25	200	-3424Q	-5381L	-3420L
M12	30	-	-	-5381M	-3425R
	35	200	-	-	-
	40	200	-3440G	-	-3436C
	45	-	-	-	-
	50	200	-3450S	-	-3446N
60	200	-	-	-	

High tensile alloy steel. **Grade 14.9. BS 2470.**

Knurled Cup - BS EN 4168

For quick and permanent location of pulleys, collars and gears on shafts. Will hold fast even in poorly tapped holes. Interrupted profile of clamping face resists loosening due to vibration. Sizes above 1/4" are generally counterbored to provide maximum clamping efficiency.

Thread Size	S (hex)
No. 4	.050"
No. 6	1/16"
No. 8	5/64"
No. 10	3/32"
1/4"	1/8"
5/16"	5/32"
3/8"	3/16"
1/2"	1/4"
5/8"	5/16"

UNC - Self Colour



Standard (Self-Colour)

Size	L	Box Qty	Order Code QFT-603
4	1/8" 200	-3708J	
	3/16" 200	-3709K	
	1/4" 200	-3712N	
	5/16" 200	-3713P	
	1/2" 200	-3716S	
6	1/8" 200	-3728E	
	3/16" 200	-3731H	
	1/4" 200	-3734L	
	1/2" 200	-3736N	
	1/8" 200	-3748A	
8	3/16" 200	-3749B	
	1/4" 200	-3753F	
	3/8" 200	-3762Q	
	1/2" 200	-3764S	
	1/4" 200	-3774C	
10	3/8" 200	-3780J	
	1/2" 200	-3783M	
	1" 200	-3790V	
	1/4" 200	-3792X	
	5/16" 200	-3797B	
1/4"	3/8" 200	-3800E	
	1/2" 200	-3805K	
	5/8" 200	-3810Q	

Size	L	Box Qty	Order Code QFT-603
1/4"	3/4" 200	-3813T	
	Cont. 1" 200	-3816X	
	3/8" 200	-3827H	
	1/4" 200	-3825F	
	5/16" 200	-3826G	
5/16"	1/2" 200	-3833P	
	3/4" 200	-3839W	
	1" 200	-3842Z	
	3/8" 200	-3852J	
	5/8" 200	-3859R	
3/8"	1/2" 200	-3857P	
	3/4" 200	-3862V	
	1" 200	-3868A	
	1 1/4" 200	-3872E	
	1 1/2" 200	-3874G	
1/2"	2" 200	-3878M	
	1/2" 200	-3888X	
	5/8" 200	-3890Z	
	1" 200	-3897F	
	1 1/4" 200	-3901K	
5/8"	1 1/2" 200	-3902L	
	5/8" 200	-3908S	
	3/4" 200	-3909T	
	1" 200	-3910V	

No.10 to 5/8" UNF - Self Colour

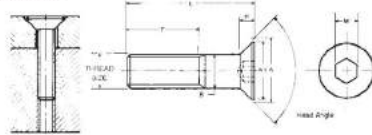
Size	L	Box Qty	Order Code QFT-603
10	1/4" 200	-4020X	
	5/16" 200	-4022Z	
	3/8" 200	-4024B	
	1/2" 200	-4030G	
	3/4" 200	-4032J	
1/4"	1" 200	-4034L	
	1/4" 200	-4037P	
	5/16" 200	-4040S	
	3/8" 200	-4042V	
	1/2" 200	-4049B	
5/16"	5/8" 200	-4050C	
	3/4" 200	-4051D	
	1" 200	-4054G	
	1/4" 200	-4056J	
	3/8" 200	-4059M	
3/8"	1/2" 200	-4063R	
	5/8" 200	-4065T	
	3/4" 200	-4066V	
	1" 200	-4068X	
	3/8" 200	-4074C	
1/2"	1/2" 200	-4077F	
	5/8" 200	-4078G	
	3/4" 200	-4081K	
	1" 200	-4083M	
	1 1/4" 200	-4084N	
5/8"	1/2" 200	-4087R	
	5/8" 200	-4088S	
	3/4" 200	-4089T	
	1" 200	-4093Y	
	5/8" 1" 200	-4100F	

PRODUCTS ARE ONLY AVAILABLE VIA YOUR DISTRIBUTOR



**Socket Head
Countersunk Screws**

High Grade Alloy Steel to **BS EN ISO 898/1 Grade 10.9**. Suitable for all high tensile applications. Maximum operating temperature (unplated): 300°C. For applications that require a flush finished surface. Precisely controlled countersink angle allows maximum flushness and sidewall contact.



Metric: Dimensions to **DIN 7991**
UNC: Dimensions **BS 2470**

A = Maximum theoretical sharp corner.
Inclined angle under head:
Up to M20 = 90°
Above M20 = 60°

Inclined angle under head:
Up to M20 = 91°/89°



Thread Size	Dimensions (mm)		
	A	H	W (hex)
M2.5	5.00	1.00	1.5
M3	6.72	1.86	2.0
M4	8.96	2.48	2.5
M5	11.20	3.10	3.0
M6	13.44	3.72	4.0
M8	17.92	4.96	5.0

Thread Size	Dimensions (mm)		
	A	H	W (hex)
4	.255	.083	1/16"
6	.307	.097	3/64"
8	.359	.112	3/32"
10	.411	.127	1/8"
1/4"	.531	.161	5/32"
5/16"	.656	.198	3/16"
3/8"	.781	.234	7/32"
1/2"	.938	.251	9/16"

FASTENERS

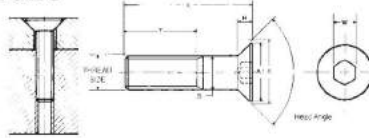
Size	L	Box Qty	ISO Metric - Self Colour		ISO Metric BZP		ISO Metric A2 Stainless		No.4 to 1/2" UNC	
			Standard (Self-Colour)	Order Code QFT-604	Bright Zinc Plated (BZP)	Order Code QFT-604	A2 Stainless Steel	Order Code QFT-604	Standard (Self-Colour)	Order Code QFT-605
M2.5	5	200	-	-	-	-	-	-	1/4"	-2204E
	6	200	-	-	-	-	-	3/8"	-2205F	
	12	200	-	-	-	-	-	1/2"	-2206G	
M3	6	200	-2020A	-0400A	-2216B	3/4"	-2207H	1/4"	-2213P	
	8	200	-2021B	-	-2216C	6	3/8"	-2214Q		
	10	200	-2022C	-0400C	-2216D	100	1/2"	-2215R		
	12	200	-2023D	-0400D	-2216E	Box	3/4"	-2216S		
	15	200	-2024E	-0400G	-2216G	1/4"	-2213P			
	16	200	-2025F	-	-	6	3/8"	-2214Q		
	18	200	-2026G	-	-	100	1/2"	-2215R		
M4	20	200	-2027H	-	-2216J	Box	3/4"	-2216S		
	25	200	-2028J	-	-2216L	1/4"	-2213P			
	30	200	-2029K	-	-2216M	6	3/8"	-2214Q		
	6	200	-	-0403B	-2217B	100	1/2"	-2215R		
	8	200	-2030L	-0403C	-2217C	Box	3/4"	-2216S		
	10	200	-2031M	-0403D	-2217D	1/4"	-2213P			
	12	200	-2032N	-	-2217E	6	3/8"	-2214Q		
	15	200	-2033P	-0403R	-2217G	100	1/2"	-2215R		
	16	200	-2034Q	-	-	Box	3/4"	-2216S		
	18	200	-2035R	-0404E	-2217J	1/4"	-2213P			
M5	20	200	-2036S	-0405F	-2217L	6	3/8"	-2214Q		
	25	200	-2037T	-0406G	-2217M	100	1/2"	-2215R		
	30	200	-2038V	-	-2217N	Box	3/4"	-2216S		
	35	200	-2039W	-	-2217P	1/4"	-2213P			
	40	200	-2040X	-	-	6	3/8"	-2214Q		
	45	200	-2040Z	-0599Z	-2218C	100	1/2"	-2215R		
	50	200	-2041D	-0600A	-2218D	Box	3/4"	-2216S		
	8	200	-2041Y	-0601B	-2218E	1/4"	-2213P			
	10	200	-2042Z	-	-	6	3/8"	-2214Q		
	12	200	-2044A	-0603D	-2218G	100	1/2"	-2215R		
	14	200	-2044W	-	-	Box	3/4"	-2216S		
	15	200	-2045B	-0604E	-2218J	1/4"	-2213P			
	16	200	-2046C	-0605F	-2218L	6	3/8"	-2214Q		
	18	200	-2047D	-0606G	-2218M	100	1/2"	-2215R		
20	200	-2048E	-0607H	-2218N	Box	3/4"	-2216S			
25	200	-2049F	-0608J	-2218P	1/4"	-2213P				
30	200	-2050G	-0609K	-2218R	6	3/8"	-2214Q			
35	200	-2051H	-	-	100	1/2"	-2215R			
40	200	-2052J	-0700A	-2219D	Box	3/4"	-2216S			
45	200	-2053K	-0700B	-2219E	1/4"	-2213P				
50	200	-2054L	-	-	6	3/8"	-2214Q			
60	200	-2054N	-0703D	-2219G	100	1/2"	-2215R			
80	200	-	-	-	Box	3/4"	-2216S			
M6	8	200	-2055M	-0705F	-2219J	1/4"	-2213P			
	10	200	-2056N	-0706G	-2219L	6	3/8"	-2214Q		
	12	200	-2057P	-0707H	-2219M	100	1/2"	-2215R		
	14	200	-2058M	-0708J	-2219N	Box	3/4"	-2216S		
	15	200	-2058Q	-0709K	-2219P	1/4"	-2213P			
	16	200	-2059R	-0710L	-2219Q	6	3/8"	-2214Q		
	18	200	-2060S	-0711M	-2219R	100	1/2"	-2215R		
	20	200	-2061T	-	-	Box	3/4"	-2216S		
	25	200	-2062V	-0712N	-2219T	1/4"	-2213P			
	30	200	-2063W	-	-2219W	6	3/8"	-2214Q		
M8	35	200	-2064X	-0800A	-	100	1/2"	-2215R		
	40	200	-2065Y	-0801B	-2221G	Box	3/4"	-2216S		
	45	200	-2066Z	-	-	1/4"	-2213P			
	50	200	-2068A	-0802C	-2221J	6	3/8"	-2214Q		
	55	200	-2068F	-0803D	-2221L	100	1/2"	-2215R		
	60	200	-2068N	-0804E	-2221M	Box	3/4"	-2216S		
	70	200	-2068Q	-0805F	-2221N	1/4"	-2213P			
	75	200	-2068X	-0806G	-2221P	6	3/8"	-2214Q		
	10	200	-2069B	-0807H	-2221Q	100	1/2"	-2215R		
	12	200	-2070C	-0808J	-2221R	Box	3/4"	-2216S		

CONTINUED ON NEXT PAGE...

SOCKET HEAD COUNTERSUNK SCREWS

Socket Head Countersunk Screws

High Grade Alloy Steel to **BS EN ISO 898/1 Grade 10.9.** Suitable for all high tensile applications. Maximum operating temperature (unplated): 300°C. For applications that require a flush finished surface. Precisely controlled countersink angle allows maximum flushness and sidewall contact.



Metric: Dimensions to **DIN 7991**
UNC/UNF: Dimensions **BS 2470**

A = Maximum theoretical sharp corner.
Inclined angle under head:
Up to M20 = 90°
Above M20 = 60°


Inclined angle under head:
Up to M20 = 91°/89°




Thread Size	Dimensions (mm)		
	A	H	W (hex)
M8	17.92	4.96	5.0
M10	22.40	6.20	6.0
M12	26.88	7.44	8.0
M14	26.00	9.95	10.0
M16	33.60	8.80	10.0
M20	40.32	9.48	12.0

UNC, UNF

Thread Size	Dimensions (mm)		
	A	H	W (hex)
4	.255	.083	1/16"
6	.307	.097	5/64"
8	.359	.112	3/32"
10	.411	.127	1/8"
1/4"	.531	.161	5/32"
5/16"	.656	.198	3/16"
3/8"	.781	.234	7/32"
1/2"	.938	.251	5/16"

M8 to M20		ISO Metric - Self Colour		
				
Standard (Self-Colour)				
Size	L	Box Qty	Order Code QFT-604	
M8 con't	55	100	-2081P	
	60	100	-2082Q	
	65	100	-	
	70	100	-2083R	
	80	50	-2083V	
	90	10	-2083T	
	100	10	-2083Z	
	M10	12	200	-2084S
		15	200	-2085T
		16	200	-2086V
		20	200	-2088X
		25	200	-2089Y
		30	200	-2090Z
35		200	-2092A	
40		100	-2093B	
45		100	-2094C	
50		100	-2095D	
55		100	-2096E	
M12	60	100	-2097F	
	65	50	-2098A	
	70	50	-2098G	
	75	50	-2099B	
	80	50	-2099H	
	90	50	-2100J	
	100	50	-2101K	
	110	50	-2101L	
	120	50	-2101M	
	M14	20	100	-2102L
		25	100	-2103M
		30	100	-2104N
		35	100	-2105P
		40	100	-2106Q
		45	50	-2107R
		50	50	-2108S
		55	50	-2109T
60		50	-2110V	
65		50	-2111D	
70		50	-2111W	
75		50	-2112F	
80		50	-2112X	
90		50	-2113Y	
100		50	-2114Z	
120		50	-2115R	
M16	35	50	-	
	40	50	-	
	50	50	-	
	30	50	-2118C	
	35	50	-2119D	
	40	50	-2120E	
	45	50	-2121F	
	50	50	-2122G	
	55	25	-2123H	
	60	25	-2124J	
M20	70	25	-2125K	
	75	25	-2126A	
	80	25	-2126L	
	90	25	-2127M	
	100	25	-2128N	
	120	25	-2130Q	
	40	25	-2137Y	
	45	25	-2138Z	
	50	25	-2139A	
	55	25	-2141F	
	60	25	-2142C	

ISO Metric BZP		
		
Bright Zinc Plated (BZP)		
Size	L	
M8	55	
	60	
	65	
	70	
	80	
	90	
	100	
	M10	12
		15
		16
		20
		25
		30
35		
40		
45		
50		
55		
M12	60	
	65	
	70	
	75	
	80	
	90	
	100	
	110	
	120	
	M14	20
		25
		30
		35
		40
		45
		50
		55
60		
65		
70		
75		
80		
90		
100		
M16		35
	40	
	50	
	30	
	35	
	40	
	45	
	50	
	55	
	60	

ISO Metric A2 Stainless		
		
A2 Stainless Steel		
Size	L	
M8	55	
	60	
	65	
	70	
	80	
	90	
	100	
	M10	12
		15
		16
		20
		25
		30
35		
40		
45		
50		
55		
M12	60	
	65	
	70	
	75	
	80	
	90	
	100	
	110	
	120	
	M14	20
		25
		30
		35
		40
		45
		50
		55
60		
65		
70		
75		
80		
90		
100		
M16		35
	40	
	50	
	30	
	35	
	40	
	45	
	50	
	55	
	60	

No. 2 to 3/8"		UNC		
				
A2 Stainless Steel				
Size	L	Order Code QFT-605		
2	1/4"	-2042C		
	3/8"	-2044C		
	1/2"	-2044E		
	3/4"	-2044G		
	6	1/4"	-2046C	
		1/2"	-2046G	
		3/8"	-2046H	
		1/2"	-2047E	
	8	3/4"	-2047G	
		1"	-2047J	
	100	1"	-2047L	
		1 1/4"	-2047N	
	10	3/8"	-2048E	
1/2"		-2048G		
Box	3/4"	-2048J		
	1"	-2049G		
1/4"	3/4"	-2049J		
	1"	-2049L		
Box	1 1/2"	-2049Q		
	3/4"	-2050J		
100	1"	-2050L		
	1 1/4"	-2051J		
Box	1"	-2051L		
	Standard (Self-Colour)			
Size	L	Order Code QFT-605		
10	3/8"	-2382C		
	1/2"	-2383D		
	5/8"	-2384E		
	3/4"	-2385F		
	1"	-2386G		
1/2"	1/2"	-2390L		
	5/8"	-2391M		
1/4"	3/4"	-2392N		
	1"	-2393P		
Box	1 1/2"	-2394Q		
	3/4"	-2397T		
5/16"	1"	-2399W		
100	1 1/4"	-2400X		
Box	1 1/2"	-2401Y		
	3/4"	-2404A		
3/8"	1"	-2405B		
	1 1/4"	-2406C		
Box	1 1/2"	-2407D		
	1"	-2411H		
1/2"	1 1/4"	-2412J		
	1 1/2"	-2413K		
Box	2"	-2415M		
Standard (Self-Colour)				
Size	L	Order Code QFT-605		
10	3/8"	-2340E		
	1/2"	-2340G		
	3/4"	-2340J		
	1"	-2340L		
	1 1/4"	-2342G		
100	3/4"	-2342J		
	1 1/2"	-2342Q		

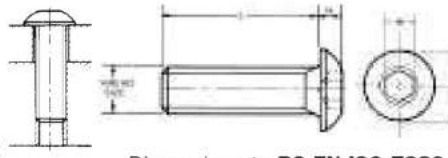
PRODUCTS ARE ONLY AVAILABLE VIA YOUR DISTRIBUTOR

FASTENERS



Socket Head Button Screws

High Grade Alloy Steel to **BS EN ISO 898/1 Grade 10.9**. For high tensile applications. Maximum operating temperature (unplated): 300°C. For materials that are too thin to countersink. Low head profile for a smooth finished appearance. Also suitable for non-critical loading requiring heat treated fasteners.



Dimensions to **BS EN ISO 7380**

Thread Size	Dimensions (mm)		
	A	H	W (hex)
M3	5.50	1.5	2.0
M4	7.60	2.2	2.5
M5	9.50	2.8	3.0
M6	10.50	3.3	4.0
M8	14.00	4.4	5.0
M10	17.30	5.4	6.0
M12	20.70	6.4	8.0



FASTENERS

M3 to M12			ISO Metric - Self Colour	ISO Metric BZP	ISO Metric A2 Stainless
Size	L	Box Qty	Standard (Self-Colour)	Bright Zinc Plated (BZP)	A2 Stainless Steel
			Order Code QFT-604	Order Code QFT-604	Order Code QFT-604
M3	5	200	-0198X	-4009Z	-
	6	200	-0200A	-4100A	-4821B
	8	200	-0201B	-4100C	-4821C
	10	200	-0202C	-4100E	-4821D
	12	200	-0203D	-4100G	-4821E
	16	200	-0206G	-	-4821G
	20	200	-0206T	-	-4821J
	25	200	-0207B	-	-4821L
	30	200	-0207D	-	-4821M
	30	200	-0207F	-	-
M4	6	200	-0207F	-4100X	-4822B
	8	200	-0207H	-4100Z	-4822C
	10	200	-0208J	-4101B	-4822D
	12	200	-0209K	-4102C	-4822E
	15	200	-0211M	-	-
	16	200	-0212N	-4103D	-4822G
	20	200	-0212T	-4104E	-4822J
	25	200	-0212V	-4106G	-4822L
	30	200	-0212X	-4107H	-4822M
	35	200	-0212Y	-	-
M5	40	200	-0212Z	-4109K	-4822P
	6	200	-0213E	-	-
	8	200	-0213L	-4196F	-4823C
	10	200	-0213P	-4200A	-4823D
	12	200	-0214Q	-4201B	-4823E
	15	200	-0216S	-	-
	16	200	-0217T	-4202C	-4823G
	18	200	-0217W	-	-
	20	200	-0219W	-4203D	-4823J
	22	200	-0220X	-	-4823L
M6	25	200	-0221Y	-4204E	-4823M
	30	200	-0222Q	-4205F	-
	35	200	-0222T	-	-4823N
	40	200	-0223A	-	-4823P
	50	200	-0223C	-	-4823R
	8	200	-0223D	-4298Z	-4825C
	10	200	-0224A	-4300A	-4825D
	12	200	-0225B	-4301B	-4825E
	15	200	-0227D	-	-
	16	200	-0228E	-4302C	-4825G
M8	18	200	-0229F	-	-
	20	200	-0230G	-4303D	-4825J
	25	200	-0232J	-4304E	-4825L
	30	200	-0233K	-4305F	-4825M
	35	200	-0233M	-4306G	-4825N
	40	200	-0233Q	-4307H	-4825P
	45	200	-0233T	-4308J	-
	50	200	-0233X	-4309K	-4825R
	60	200	-	-4311M	-
	70	200	-	-4315R	-
M10	10	200	-0234L	-4400A	-4827D
	12	200	-0235M	-	-4827E
	15	200	-0237P	-	-
	16	200	-0238Q	-4401B	-4827G
	20	200	-0240S	-4402C	-4827J
	25	200	-0242V	-4403D	-4827L
	30	200	-0243W	-4404E	-4827M
	35	200	-0244X	-4405F	-4827N
	40	200	-0245Y	-4406G	-4827P
	45	200	-0246B	-	-4827Q
M12	50	200	-0246H	-4408J	-4827R
	60	200	-0246Z	-4409K	-4827T
	70	200	-	-	-4827W
	80	200	-	-	-4827Y
	12	200	-	-	-4829E
	16	200	-0249B	-	-4829G
	20	200	-0251D	-4502C	-4829J
	25	200	-0253F	-4503D	-4829L
	30	200	-0254G	-4504E	-4829M
	35	200	-0255H	-4505G	-4829N
M8	40	100	-0256J	-4506H	-4829P
	45	100	-0257B	-	-
	50	100	-0257L	-	-4829R
	60	100	-0257N	-4509L	-
	70	100	-0257T	-	-
	16	100	-0259M	-	-
	20	100	-0261P	-4602C	-4831J
	25	100	-0263R	-4603D	-4831L
	30	100	-0264S	-4604E	-4831M
	35	100	-0265T	-4605F	-
M12	40	50	-0266V	-4606G	-4831P
	45	50	-	-4607H	-
	50	50	-0268X	-4608J	-4831R

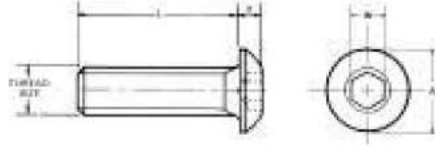
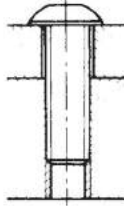
QUALFAST Socket Head Button Screws



High Grade Alloy Steel to **BS EN ISO 898/1 Grade 10.9**.

Suitable for all high tensile applications. Maximum operating temperature (unplated): 300°C. For materials that are too thin to countersink. Low head profile for a smooth finished appearance. Also suitable for non-critical loading requiring heat treated fasteners.

Thread Size	Dimensions (mm)		
	A	H	W (hex)
UNC/UNF			
6	.262	.073	5/64
8	.312	.087	3/32
10	.361	.101	1/8
1/4	.437	.132	5/32
5/16	.547	.166	3/16
BSW			
3/16"	.361	.101	1/8"
1/4"	.437	.132	5/32"
5/16"	.547	.166	3/16"
3/8"	.656	.199	7/32"
1/2"	.875	.265	5/16"
BA			
2BA	0.36	0.1	1/8"



UNC/UNF Dimensions to **ANSI B 18.3**
BSW/BA Dimensions to **BS 2470**

No.10 to 5/16" UNF - Self Colour



Standard (Self-Colour)

Size	L	Box Qty	Order Code
QFT-605			
10	1/4"	100	-0350A
	3/8"	100	-0351B
	1/2"	100	-0352C
	5/8"	100	-0353D
	3/4"	100	-0354E
1/4"	1"	100	-0355F
	1/2"	100	-0357H
	3/4"	100	-0359K
	1"	100	-0361L
5/16"	1/2"	200	-0362M
	5/8"	200	-0363M
	3/4"	200	-0364N
1"	200	-0367S	

No.4 to 3/8" UNC - Self Colour



Standard (Self-Colour)

Size	L	Box Qty	Order Code	
QFT-605				
4	1/4"	100	-0293D	
	3/8"	100	-0294E	
	1/2"	100	-0295F	
6	3/8"	100	-0296G	
	1/2"	100	-0297H	
8	1/4"	100	-0300L	
	3/8"	100	-0301M	
	1/2"	100	-0302N	
	3/4"	100	-0303Y	
10	1/4"	100	-0305R	
	3/8"	100	-0306S	
	1/2"	100	-0307T	
	3/4"	100	-0309W	
	1"	100	-0311Y	
	3/8"	100	-0313Z	
	1/2"	100	-0314A	
	1/4"	5/8"	100	-0315B
	3/4"	100	-0316C	
	1"	100	-0318B	
1/2"	100	-0319E		
5/16"	5/8"	100	-0320G	
	3/4"	100	-0321H	
	1"	100	-0322J	
3/8"	1/2"	100	-0323J	
	3/4"	100	-0324L	
	1"	100	-0326N	

No.4 to 3/8" UNC Stainless A2 Steel

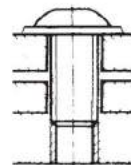


A2 Stainless Steel

Size	L	Box Qty	Order Code
QFT-605			
4	1/4"	100	-0237C
	3/8"	100	-0237E
	1/2"	100	-0237G
	3/4"	100	-0237J
6	3/8"	100	-0239E
	1/2"	100	-0239G
	3/4"	100	-0239J
8	1"	100	-0239L
	1/4"	100	-0240C
	3/8"	100	-0240E
	1/2"	100	-0240G
10	3/4"	100	-0240J
	1"	100	-0240L
	1/4"	100	-0241C
	3/8"	100	-0241E
	1/2"	100	-0241G
	3/4"	100	-0241J
1/4"	1"	100	-0241L
	1/2"	100	-0242G
	3/4"	100	-0242J
5/16"	1"	100	-0242L
	1/2"	100	-0243G
3/8"	3/4"	100	-0243J
	1"	100	-0243L
	1 1/2"	100	-0243Q
5/8"	1"	100	-0244G
	1"	100	-0244L

Socket Head Flange Button Screws

An extra wide flange below the button head makes these fasteners ideal for fixing strips cover plates and sheet metal housings that require a greater load spread.



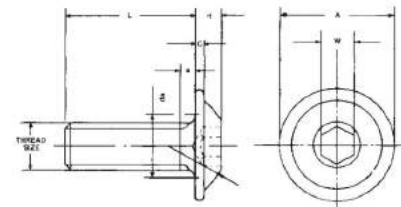
Thread Size	Dimensions (mm)		
	A	H	W (hex)
M4	9.29	2.2	2.5
M5	11.40	2.8	3.0
M6	13.59	3.3	4.0
M8	17.00	4.4	5.0
M10	20.80	5.4	6.0

M3 to M10 ISO Metric - Self Colour



Standard (Self-Colour)

Size	L	Box Qty	Order Code
QFT-604			
M3	8	200	-3001B
	10	200	-3002C
	12	200	-3003D
	6	200	-3008J
M4	8	200	-3009K
	10	200	-3010L
	12	200	-3011M
	16	200	-3013P
M5	8	200	-3019W
	10	200	-3020X
	12	200	-3021Y
	14	200	-3022Z
M6	16	200	-3023A
	20	200	-3024B
	25	200	-3026D
	M8	10	200
12		200	-3045Z
16		200	-3047B
20		200	-3048C
25		200	-3050E
30		200	-3051F
M10	35	200	-3052G
	50	200	-3055K
	16	200	-3058N
	20	200	-3059P
25	200	-3061R	
30	200	-3062S	



Dimensions to **BS EN ISO 898/1**
Grade 10.9 DIN 7380



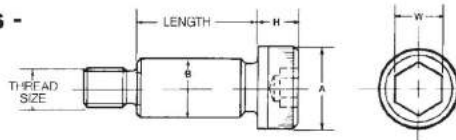
Group 021

PRODUCTS ARE ONLY AVAILABLE VIA YOUR DISTRIBUTOR

GROUP 610 SOCKET HEAD SHOULDER SCREWS



QUALFAST Socket Head Shoulder Screws - Metric



High Grade Alloy Steel to **BS EN ISO 898/1 Grade 12.9**. Suitable for replacing costly components such as shafts, pivots, guides, pins, linkages and trunion mountings. Also commonly used in the die mould industry. Maximum operating temperature (unplated): 300°C.

Dimensions to **ISO 7379** Body Diameter to h8



M5 to M20		ISO Metric		Thread Size	L	Order Code
				45		-0645K
				50		-0650J
				60		-0651K
				50	65	-0651T
				50	70	-0652L
				50	75	-0653A
				50	80	-0653M
				50	90	-0655P
				50	10	-0810A
				50	12	-0812C
				50	15	-0815F
				50	16	-0816G
				50	20	-0820L
				50	25	-0825R
				50	30	-0830X
				50	35	-0835C
				50	40	-0840H
				50	45	-0845N
				50	50	-0850T
				50	60	-0860V
				50	65	-0865A
				50	70	-0870Q
				50	80	-0880B
				50	90	-0890D
				50	100	-0900F
				50	120	-0920H

Thread Size	B	A	H	W (hex)	Thread Size	B	A	H	w (hex)
M5	6.0	10.0	4.5	3.0	3/16"	0.2480	0.375	0.188	1/8"
M6	8.0	13.0	5.5	4.0	1/4"	0.3105	0.437	0.219	5/32"
M8	10.0	16.0	7.0	5.0	5/16"	0.3730	0.562	0.250	3/16"
M10	12.0	18.0	9.0	6.0	3/8"	0.4980	0.750	0.313	1/4"
M12	16.0	24.0	12.0	8.0	1/2"	0.6230	0.875	0.375	5/16"
M16	20.0	30.0	14.0	10.0	5/8"	0.7480	1.000	0.500	3/8"
M20	24.0	36.0	16.0	12.0	3/4"	0.9980	0.132	0.625	1/2"
M24	28.0	40.0	18.0	14.0					

Standard (Self-Colour)

Thread Size	L	Order Code
		QFT-610
M5	10	-0510A
M5	12	-0512C
M5	15	-0515F
M5	16	-0516G
M5	20	-0520L
M5	25	-0525R
M5	30	-0530X
M5	40	-0540H
M5	45	-0545N
M5	50	-0541J
M5	60	-0547Q
M6	10	-0610Y
M6	12	-0612A
M6	15	-0615F
M6	16	-0616G
M6	20	-0620L
M6	25	-0625R
M6	30	-0630X
M6	35	-0635C
M6	40	-0640H

Thread Size	L	Order Code	
		QFT-610	
M10	15	-1015F	
M10	16	-1016G	
M10	20	-1020L	
M10	25	-1025R	
M10	30	-1030S	
M10	35	-1035T	
M10	40	-1040H	
M10	45	-1045K	
M10	50	-1050T	
M10	55	-1055Y	
M10	60	-1060E	
M10	70	-1070Q	
M10	80	-1080B	
M10	90	-1090C	
M10	100	-1100Z	
M10	120	-1120H	
M10	140	-1140D	
M12	20	-1220V	
M12	30	-1230X	
M12	35	-1235C	
M12	25	40	-1240H
M12	50	-1250T	
M12	60	-1260E	

Thread Size	L	Order Code	
		QFT-610	
M12	70	-1270Q	
M12	80	-1280B	
M12	25	90	-1290L
M12	100	-1300Z	
M12	120	-1320Z	
M12	140	-1340B	

FASTENERS

1/4" to 5/8" UNC

Thread Size	Dimensions (mm)	Order Code
		QFT-611
1/4"	3/8"	-4611A
1/4"	1"	-4614D
1/2"	1"	-4714D
5/16"	1 1/2"	-4716F
5/8"	2 1/2"	-4720K
5/8"	Box 2 3/4"	-4721L

Thread Size	L	Order Code
		QFT-611
1"		-4814D
2"		-4818H
3/8"	2 1/2"	-4820K
3/8"	2 3/4"	-4821L
25	3"	-4822M
Box	3 1/2"	-4824P

KENNEDY Wrench Sets

Pro-Torq Hex Wrench Sets Supplied on robust plastic clips. Keeps all sizes together and readily available. Conveniently folds up to a handy pocket size with penknife type storage.



KENNEDY Ball Driver L-Wrenches

Manufactured from fully hardened carbon steel. A quality ductile key with precision cut ends and accurate AF dimensional to ensure maximum socket contact. Ball end allows up to 30° work offset. Long arm end is ball drive and short arm end plain. Black oxidised finish.

METRIC

Size (mm)	Overall Length	Weight per 100	Order Code
1.5	63mm	1.21kg	-3030K
2.0	77mm	2.61kg	-3040K
2.5	87mm	4.59kg	-3050K
3.0	93mm	7.17kg	-3060K
4.0	104mm	14.6kg	-3080K
5.0	120mm	26.2kg	-3100K
6.0	141mm	44.3kg	-3120K
7.0	147mm	63.5kg	-3140K
8.0	158mm	89.1kg	-3160K
10.0	180mm	158kg	-3200K

INCH

Size (inch)	Overall Length	Weight per 100	Order Code
0.050"	77mm	0.30kg	-4030K
1/16"	77mm	0.32kg	-4040K
5/64"	82mm	0.32kg	-4050K
3/32"	89mm	0.46kg	-4060K
7/64"	96mm	0.64kg	-4070K
1/8"	101mm	0.86kg	-4080K
9/64"	105mm	1.10kg	-4090K
5/32"	113mm	2.10kg	-4100K
3/16"	124mm	2.30kg	-4120K
7/32"	134mm	3.40kg	-4140K
1/4"	150mm	2.80kg	-4160K
5/16"	162mm	8.00kg	-4200K
3/8"	186mm	26.00kg	-4240K

Metric 7 Piece Set Contents: 1.5, 2, 2.5, 3, 4, 5 and 6mm.

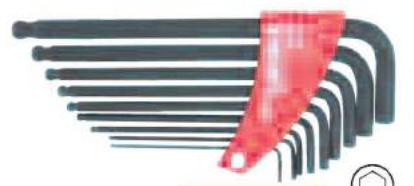


Metric 9 Piece Set Contents: 1.5, 2, 2.5, 3, 4, 5, 6, 8 and 10mm.

Supplied in a plastic storage clip.

Number of Pieces	Weight each	Order Code
7	110g	-4570K
9	350g	-5500K

Inch 7 Piece Set Contents: 5/64", 3/32", 7/64", 1/8", 9/64", 5/32" and 3/16".



Inch 9 Piece Set Contents: 5/64", 3/32", 1/8", 5/32", 3/16", 7/32", 1/4", 5/16" and 3/8".

Supplied in a plastic storage clip.

Number of Pieces	Weight each	Order Code
7	80g	-5580K
9	370g	-5730K

650 PRODUCTS ARE ONLY AVAILABLE VIA YOUR DISTRIBUTOR


FASTENER ASSORTMENTS
QUALFAST Stainless Fastener Assortments
A2 Stainless Steel Pozi Pan head CSK Self-tapping Screw Kits

Contents:
CSK STS: 2.9 x 13, 2.9 x 16, 3.5 x 13, 3.5 x 19, 3.5 x 25, 4.2 x 13, 4.2 x 19, 4.2 x 25, 4.8 x 16 and 4.8 x 25mm.



Type	Average Quantity	Order Code QFT-615
Pozi CSK	900	-4440K

A2 Stainless Steel Pozi Pan Head Machine Screw Kits

Contents:
PAN: M4 x 10, M4 x 12, M4 x 16, M5 x 16, M5 x 20, M6 x 12, M6 x 16, M6 x 20 and M6 x 25mm.



Type	Average Quantity	Order Code QFT-615
Pozi PAN	400	-4460K

A2 Stainless Steel CSK Socket Screw Kit

Contents: M5 x 12, M5 x 16, M5 x 20, M6 x 12, M6 x 16, M6 x 20, M6 x 25, M8 x 20, M8 x 25 and M8 x 30mm.



Washer Type	Average Quantity	Order Code QFT-615
Metric	310	-4410K

A2 Stainless Steel Pozi Pan Head Self-tapping Screw Kits

Contents:
PAN STS: 2.9 x 13, 2.9 x 16, 3.5 x 13, 3.5 x 19, 3.5 x 25, 4.2 x 13, 4.2 x 19, 4.2 x 25, 4.8 x 16 and 4.8 x 25mm.



Type	Average Quantity	Order Code QFT-615
Pozi PAN	900	-4450K

A2 Stainless Steel Pozi CSK Machine Screw Kits

Contents:
CSK: M4 x 10, M4 x 12, M4 x 16, M5 x 16, M5 x 20, M6 x 12, M6 x 16, M6 x 20 and M6 x 25mm.



Type	Average Quantity	Order Code QFT-615
Pozi CSK	500	-4470K

A2 Stainless Steel Socket Cap Screw Kit

Contents: 5 x 12, 5 x 16, 5 x 20, 6 x 12, 6 x 16, 6 x 20, 6 x 25, 8 x 16, 8 x 20 and 8 x 25mm.



Washer Type	Average Quantity	Order Code QFT-615
Metric	250	-4380K

A2 Stainless Steel Pozi CSK Woodscrew Kit

Contents: 3.5 x 16, 3.5 x 20, 3.5 x 25, 4.0 x 20, 4.0 x 25, 4.0 x 30, 5.0 x 25, 5.0 x 30, 5.0 x 40 and 5.0 x 50mm.



Type	Average Quantity	Order Code QFT-615
Metric	625	-4430K

A2 Stainless Steel Socket Button Screw Kit

Contents: M5 x 12, M5 x 16, M5 x 20, M6 x 12, M6 x 16, M6 x 20, M6 x 25, M8 x 20, M8 x 25 and M8 x 30mm.



Type	Average Quantity	Order Code QFT-615
Metric	310	-4420K

A2 Stainless Steel Hex Set Screw Kit

Contents: M6 x 12, M6 x 16, M6 x 20, M6 x 25, M8 x 20, M8 x 25, M8 x 30, M10 x 25 and M10 x 20mm.



Type	Average Quantity	Order Code QFT-615
Metric	200	-4390K

A2 Stainless Steel Nuts & Washer Kit Plus Nyloc Nut Kit

Contents:
Full Nuts: M5, M6, M8, M10 and M12.
Form B: M5, M6, M8, M10 and M12.



Type	Average Quantity	Weight each
Metric	890	1.7kg
Metric	1087	2.6kg

Nyloc Nuts: M3, M4, M5, M6, M8, M10, M12, M14, M16 and M20.



Type	Average Quantity	Weight each	Order Code QFT-615
Metric	890	1.7kg	-4400K
Metric	1087	2.6kg	-4480K

A4 Stainless Steel Metric Hex Head Screw Kit

Contents: M6 x 12 x 25, M6 x 16 x 25, M6x20 x 25, M6 x 25 x 25, M8 x 16 x 20, M8x20 x 20, M8 x 25 x 20, M8 x 30 x 20, M10 x 25 x 10 and M10 x 30 x 10mm.



Type	Average Quantity	Order Code QFT-615
Metric	200	-4640K

PRODUCTS ARE ONLY AVAILABLE VIA YOUR DISTRIBUTOR

QUALFAST Fix-it Kits

A4 Stainless Steel Metric Nut & Washer Kit

Contents:

Nuts:

M5 - x150, M6 - x100, M8 - x50, M10 - x25, M12 - x15,

Washers:

M5 - x200, M6 - x150, M8 - x100, M10 - x50 and M12 - x50.



Washer Type	Average Quantity	Order Code
Metric	890	-4630K

A4 Stainless Steel Metric Nut Kit

Contents:

M3 - x250, M4 - x200, M5 - x150, M6 - x100, M8 - x50, M10 - x25, M12 - x15, M16 - x9, M20 - x4 and M24 - x2.



Washer Type	Average Quantity	Order Code
Metric	805	-4610K

A4 Stainless Steel Metric Washer Kit

Contents:

M3 - x300, M4 - x250, M5 - x200, M6 - x150, M8 - x100, M10 - x50, M12 - x50, M16 - x25, M20 - x10 and M24 - x5.



Washer Type	Average Quantity	Order Code
Metric	1140	-4620K

Brass Fastener Assortments
Brass Hex Nuts & Washer Set

Contents:

M6 - x12, M6 - x16, M6 - x20, M6 - x25, M8 - x16, M8 - x20, M8 - x25, M8 - x30, M10 - x25 and M10 - x30.



Type	Avg Qty	Weight each	Order Code
Metric	110	2.2kg	-5400K

Brass Slot CSK Woodscrew Kit

Contents:

3.5 - x16, 3.5 - x20, 3.5 - x25, 4.0 - x20, 4.0 - x25, 4.0 - x30, 5.0 - x25, 5.0 - x30, 5.0 - x40 and 5.0 - x50.



Type	Avg Qty	Weight each	Order Code
Metric	625	2.1kg	-5430K

Brass Slot Pan M/C Nuts & Washer Set

Contents: M4 x 8, M4 x 10, M4 x 12, M4 x 16, M5 x 16, M5 x 20, M6 x 12, M6 x 16, M6 x 20 and M6 x 25mm.



Type	Average Quantity	Order Code
Metric	310	-5460K

Brass Metric Nut

Contents:

M2.5 - x250, M3 - x200, M4 - x150, M5 - x100, M6 - x50, M8 - x25, M10 - x15, M12 - x10, M16 - x8 and M20 - x4.



Type	Average Quantity	Order Code
Metric	812	-5510K



Brass Slot CSK M/C Nut & Washer Set

Contents:

M4 x 8, M4 x 10, M4 x 12, M4 x 16, M5 x 16, M5 x 20, M6 x 12, M6 x 16, M6 x 20 and M6 x 25mm.



Type	Average Quantity	Order Code
Metric	310	-5470K

Brass Metric Washer

Contents:

M2.5 x 300, M3 x 250, M3.5 x 250, M4 x 200, M5 x 150, M6 x 100, M8 x 50, M10 x 50, M12 x 25 and M16 x 5.



Type	Average Quantity	Order Code
Metric	1380	-5520K

Self-Tapping Screws
Contents:
Slotted Zinc-Plated Countersunk:

4 x 1/4, 4 x 5/8, 4 x 3/4, 6 x 1/2, 6 x 3/4, 6 x 1, 8 x 1/2, 8 x 3/4, 8 x 1, 10 x 1/2, 10 x 3/4, 10 x 1.

Pan Head:

4 x 1/2, 4 x 3/4, 6 x 1/2, 6 x 3/4, 8 x 1/2, 8 x 3/4, 10 x 1/2, 10 x 3/4, 10 x 1mm.

Pozi Pan Head:

4 x 1/2, 6 x 1/2, 8 x 1/2, 10 x 1/2, 12 x 1/2, 4 x 3/4, 6 x 3/4, 8 x 3/4, 10 x 3/4, 12 x 3/4, 6 x 1, 8 x 1, 10 x 1.

Flange: 1/2 x 6, 5/8 x 6, 3/4 x 6, 1/2 x 8, 3/4 x 8, 1/2 x 10, 3/4 x 10mm.



Type	Average Quantity	Order Code
Countersunk	700	-4050K
Pan Head (s)	700	-4060K
Pan Head (p)	700	-4600K
Flange	700	-4610K

Round Head Wood Screws
Contents:

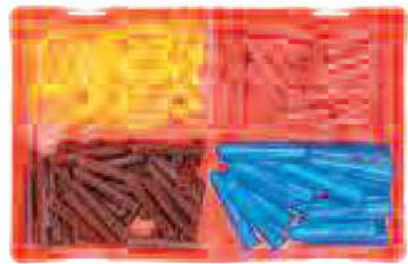
Brass Slotted: 4 x 18, 6 x 18, 6 x 25, 8 x 18, 8 x 25, 8 x 38, 10 x 38, 10 x 50mm.



Average Quantity	Weight each	Order Code
375	1.30kg	-4720K

Wall Plugs

Contents: yellow, red, brown and blue.



Average Quantity	Order Code
220	KEN-615 -4740K

MATLOCK Screw Organiser

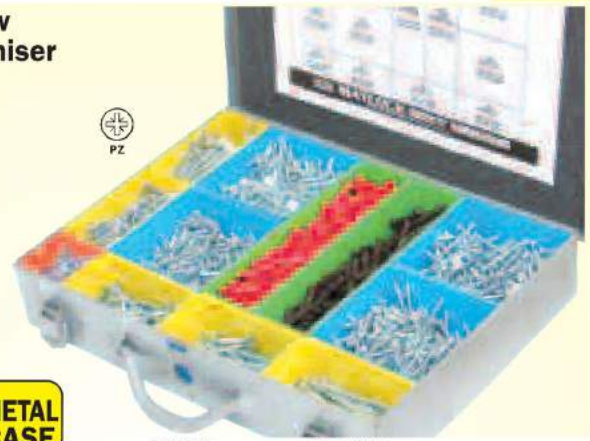
2880 Pieces
Silver-TT™ Twin Thread
Woodscrew Set

Set Contents:

No.6 x 3/4" (325),
 No.6 x 1" (375),
 No.8 x 1" (575),
 No.8 x 1 1/4" (400),
 No.8 x 1 1/2" (300),
 No.8 x 2" (200),
 No.8 x 2 1/2" (75),
 No.10 x 2" (70),
 No.10 x 2 1/2" (60),
 No.10 x 3" (50).

Fixing Plugs:

red 5.5mm (300),
 brown 7mm (150).



Weight each	Order Code
9.15kg	MTL-615 -0010K

Screw Organiser

2880 Pieces
Gold-ZP™ Fibre Board
Woodscrew Set

Set Contents:

3.5 x 20mm (325),
 3.5 x 25 (375),
 4.0 x 25 (575),
 4.0 x 30 (400),
 4.0 x 40 (300),
 4.0 x 50 (200),
 4.0 x 60 (75),
 5.0 x 50 (70),
 5.0 x 60 (60),
 5.0 x 70 (50).

Fixing Plugs:

red 5.5mm (300),
 brown 7mm (150).

Average Quantity	Order Code
2880	MTL-615 -0020K


Countersunk Wood Screws
Contents:

Slotted Zinc-Plated: 1/2 x 4, 3/4 x 4, 3/4 x 6, 1 x 6, 1/2 x 8, 3/4 x 8, 1 x 10, 1 1/2 x 10mm.

Pozidriv® Zinc-Plated: 1/2 x 4, 3/4 x 4, 3/4 x 6, 1 x 6, 1/2 x 8, 3/4 x 8, 1 x 10, 1 1/2 x 10mm.

Average Quantity	Order Code
350	KEN-615 -4360K
350	-4370K


SENATOR QUALITY TOOLING

210 pce Multi-purpose Wood Screws Kit

Supplied in a transparent plastic box.

Contents:

3.00 x 20mm - 65, 3.5 x 25mm - 45,
 3.5 x 35mm - 35, 4.0 x 15mm - 30,
 4.0 x 40mm - 20, 5.0 x 50mm - 15.



Average Quantity	Order Code
210	SEN-615 -2100K


220 pce Wall Anchor Assortment Kit

Supplied in a transparent plastic box.

Contents:

5 x 20mm - 75, 6 x 25mm - 55,
 7 x 25mm - 42, 8 x 30mm - 35,
 10 x 35mm - 8, 12 x 60mm - 5



Average Quantity	Order Code
220	SEN-615 -2400K



KENNEDY Fix-it
QUALITY INDUSTRIAL TOOLS Kits

Metric Socket Head Cap Screws

Sizes: M5 x 16, M5 x 20, M6 x 20, M6 x 25, M8 x 25, M8 x 30, M10 x 25, M10 x 30, M12 x 20, M12 x 25, M12 x 30mm.



Average Quantity	Weight each	Order Code
100	1.15kg	KEN-615 -4630K

Metric Socket Screws - BZP

Cap Head

Sizes: M5 x 12, 16 and 20. M6 x 12, 16, 20 and 25. M8 x 16, 20 and 25.
DIN 912. Grade 12.9.



Average Quantity	Weight each	Order Code
240	1.91kg	KEN-615 -5060K

Cap Screws - Socket Head

UNF Kit Contents:

$\frac{3}{16}$ x $\frac{1}{2}$, $\frac{3}{16}$ x $\frac{3}{4}$, $\frac{3}{16}$ x 1, $\frac{1}{4}$ x $\frac{3}{4}$, $\frac{1}{4}$ x 1, $\frac{1}{4}$ x $1\frac{1}{4}$, $\frac{5}{16}$ x $\frac{3}{4}$, $\frac{5}{16}$ x 1, $\frac{5}{16}$ x $1\frac{1}{2}$, $\frac{3}{8}$ x $\frac{3}{4}$, $\frac{3}{8}$ x 1, $\frac{3}{8}$ x $1\frac{1}{2}$.



BEST SELLER



Type	Average Quantity	Order Code
UNF	100	KEN-615 -4640K

Metric Socket Screws - Button Head

Sizes: M5 x 12, 16 and 20. M6 x 12, 16, 20 and 25. M8 x 20, 25 and 30.
ISO 7380.



Average Quantity	Weight each	Order Code
310	1.80kg	KEN-615 -5010K

Metric Socket Screws - BZP

Button Head

Sizes: M5 x 12, 16 and 20. M6 x 12, 16, 20 and 25. M8 x 20, 25 and 30.
ISO 7380.



Average Quantity	Weight each	Order Code
310	1.80kg	KEN-615 -5020K

Metric Socket Set Screws

Cup Point

Sizes: M4 x 4, 8 and 10. M5 x 5, 8, 10. M6 x 6, 8, 10 and 12.
DIN 916.



Average Quantity	Weight each	Order Code
2000	1.87kg	KEN-615 -5140K

FASTENERS

Metric Socket Head Countersunk Screws

Metric: M5 x 12, M5 x 16, M5 x 20, M6 x 12, M6 x 16, M6 x 20, M6 x 25, M8 x 20, M8 x 25, M8 x 30
DIN 7991.



Average Quantity	Weight each	Order Code
410	1.99kg	KEN-615 -5090K

Metric Socket Screws - BZP

Countersunk

Sizes: M5 x 12, 16 & 20. M6 x 12, 16, 20 and 25. M8 x 20, 25 and 30.
DIN 7991.



Average Quantity	Weight each	Order Code
410	2.00kg	KEN-615 -5100K

Set Screws, Nuts & Washers

Contents:

Metric: Grade 8.8: M6 x 25, M6 x 40, M8 x 25, M8 x 40 and M10 x 25, M10 x 40mm.

UNF: Grade 'S': $\frac{1}{4}$ " x $\frac{3}{4}$ ", $\frac{1}{4}$ " x 1", $\frac{5}{16}$ x 1", $\frac{5}{16}$ x $1\frac{1}{4}$ ", $\frac{3}{8}$ " x 1", $\frac{3}{8}$ " x $1\frac{1}{2}$ ".

UNC: Grade 'S': $\frac{1}{4}$ " x $\frac{3}{4}$ ", $\frac{1}{4}$ " x 1", $\frac{5}{16}$ x 1", $\frac{5}{16}$ x $1\frac{1}{4}$ ", $\frac{3}{8}$ " x 1", $\frac{3}{8}$ " x $1\frac{1}{2}$ ".



Type	Average Quantity	Weight each	Order Code
Metric	288	2.2kg	KEN-615 -4110K
UNF	264	2.1kg	-4120K
UNC	264	2.2kg	-4130K



FASTENER ASSORTMENTS



KENNEDY Fix-it Kits

Machine Screws & Nuts Steel - Pan Head:

M3 x 10, M3 x 12, M3 x 16, M3 x 20, M4 x 8, M4 x 10, M4 x 12, M4 x 16, M4 x 20, M4 x 25, M5 x 10, M5 x 12, M5 x 16, M5 x 20, M6 x 10, M6 x 12, M6 x 16, M6 x 20 and M6 x 25.

Brass - Round Head Plus Washers:

4BA x 3/4", 4BA x 1", 4BA x 1 1/2", 2BA x 3/4", 2BA x 1" and 2BA x 1 1/2".



Type	Avg Qty	Weight each	Order Code KEN-615
Steel	600	1.15kg	-4290K
Metric	390	1.90kg	-4300K

KENNEDY Fix-it Kits

Metric Nylon Machine Screw, Nut & Washer Kit

Contents (25 of each):

Countersunk head - Slotted

Plus Nuts & Washers:

M3 x 8, M3 x 16, M4 x 8, M4 x 16, M4 x 20, M5 x 8 and M5 x 16,

Cheese head - Slotted + Nuts & Washers:

M3 x 6, M3 x 12, M3 x 25, M4 x 8, M4 x 6, M4 x 12, M4 x 25, M5 x 6, M5 x 12 and M5 x 25.



Type	Avg Qty	Weight each	Order Code KEN-615
Nylon	525	577g	-4100K

Nyloc Zinc Plated Nuts

Contents:

M5, M6, M8, M10, M12, M14 and M16.



Type	Avg Qty	Weight each	Order Code KEN-615
Metric	300	1.10kg	-4180K

SENATOR Fix-it Kits

Set Screws, Nuts & Washers - BZP

Made from bright zinc plated machine and tempered low carbon steel, rust and corrosion-resistant.



Contents:

Screws:

M4 x 12 - x10, M4 x 20 - x10, M5 x 16 - x10, M5 x 25 - x10, M6 x 20 - x10, M6 x 30 - x10, M8 x 25 - x5, M8 x 40 - x5, M10 x 16 - x5, M10 x 40 - x5.

Washers:

M4 - x20, M5 - x20, M6 - x20, M8 - x10, M10 - x10.

Nuts:

M4 - x20, M5 - x20, M6 - x20, M8 - x10, M10 - x10.

Average Quantity	Order Code SEN-615
240	-6110K

Metric Nuts & Bolts

Mild Steel. Grade 4.6.

Contents: M6 x 20, M6 x 40, M6 x 45, M8 x 25, M8 x 30, M8 x 35 and M8 x 50mm.

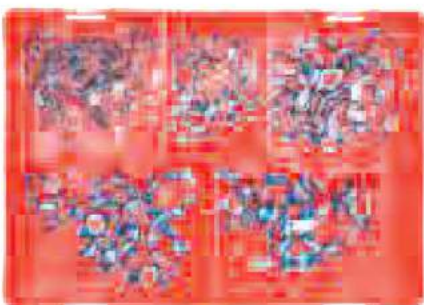


Average Quantity	Weight each	Order Code KEN-615
200	1.70kg	-4030K

Zinc Plated Wing Nuts

Contents: M4, M5, M6, M8 and M10.

BEST SELLER



Average Quantity	Weight each	Order Code KEN-615
100	0.50kg	-4210K

92 pce Hook & Eye Bolt Assortment Kit

Contents:

Round eye bolt: 12mm x 14, 20mm x 10, 40mm x 8

Cup hook: 12mm x 6, 22mm x 8, 30mm x 6, 40mm x 4

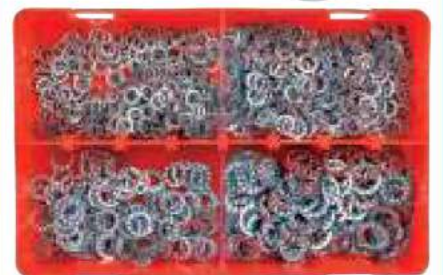
L-hook: 20mm x 12, 25mm x 10, 30mm x 6, 40mm x 8



Average Quantity	Order Code SEN-615
92	-2500K

Internal Disc Lock Washers - Metric

Contents: M5, M6, M8 and M10.



Washer Type	Average Quantity	Order Code KEN-615
Internal Lock	750	-4250K

Cold Formed Zinc Plated Nuts

Contents:

M5, M6, M8, M10 and M12.



Type	Avg Qty	Weight each	Order Code KEN-615
Metric	375	1.40kg	-4150K

FASTENERS

PRODUCTS ARE ONLY AVAILABLE VIA YOUR DISTRIBUTOR

© 2018

GROUP
615

FASTENER ASSORTMENTS



KENNEDY Fix-it
QUALITY INDUSTRIAL TOOLING Kits

**BEST
SELLER**

Plain Washers - Metric

Contents: M5, M6, M8, M10 and M12mm.



Washer Type	Average Quantity	Order Code KEN-615
Plain	1500	-4230K

Starlock Washers, Uncapped - Inch

Contents: 3/32", 1/8", 5/32", 3/16", 1/4", 5/16", 3/8", 7/16", 1/2", 5/8" and 3/4".



Washer Type	Average Quantity	Order Code KEN-615
Starlock	585	-4320K

Square Section Spring Washers - Metric BZP

Contents: M5, M6, M8, M10 and M12.



Washer Type	Weight each	Order Code KEN-615
Square Spring	915g	-4240K

Mudguard Washers - Metric

Contents: M5, M6, M8 and M10mm.

**BEST
SELLER**



Type	Avg Qty	Weight each	Order Code KEN-615
Metric	220	1.45kg	-4270K

Panel Clips

Contents:

U-Type: No.6, No.8, No.10, No.12 and No.14,

J-Type: No.6, No.8, No.10, No.12 and No.14.



Washer Type	Average Quantity	Order Code KEN-615
Panel Clips	300	-4480K

External Disc Lock Washers - Metric

Contents: M5, M6, M8, and M10.



Washer Type	Average Quantity	Order Code KEN-615
External Lock	750	-4260K

Brass Cup Washers - Metric

Contents: No. 4, 6, 8, 10, 12 and 14mm.



Washer Type	Average Quantity	Order Code KEN-615
Cup	465	-4330K

Plain Copper Washers - Metric

Contents: M5, M6, M8, M10 and M12mm.

**BEST
SELLER**



Washer Type	Average Quantity	Order Code KEN-615
Copper	300	-4690K

SENATOR Fix-it
QUALITY TOOLING Kits

Flat & Spring Washers

Contents:

Flat Washers (diameter): 4mm - x120, 5mm - x100, 6mm - x80, 8mm - x50, 10mm - x30 and 12mm - x15.

Spring Washers (diameter): 4mm - x120, 5mm - x100, 6mm - x80, 8mm - x50, 10mm - x30 and 12mm - x15.



Type	Average Quantity	Order Code SEN-615
Flat & Spring Washer Kit	790	-3810K



KENNEDY Fix-it Kits

Blind Grommets

Made from chemical/heat resistant nylon 66 with a flammability rating of UL94V-2 and material temperature index: 125°C.

Contents: diameters from 4.8 - 45mm for maximum panel thickness from 1.6 - 3.2mm.



Average Qty	Weight each	Order Code
260	485g	KEN-615

Wiring Grommets

Contents: 6, 8, 10, 11, 12, 14, 18 and 20mm.



Type	Avg Qty	Weight each	Order Code
Wiring Grommets	100	252g	KEN-615

Grommets

Contents: 5/16", 3/8", 1/2", 5/8", 3/4", 7/8", 15/16" and 1".



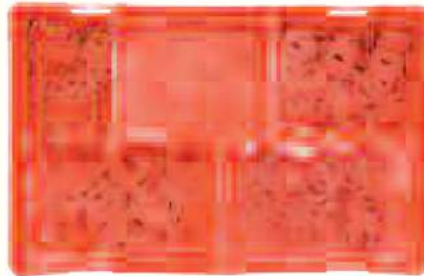
Average Quantity	Weight each	Order Code
120	0.35kg	KEN-615

FASTENER ASSORTMENTS

GROUP **615**

Fibre Washers - Metric

Contents: M5, M6, M8, M10 and M12.

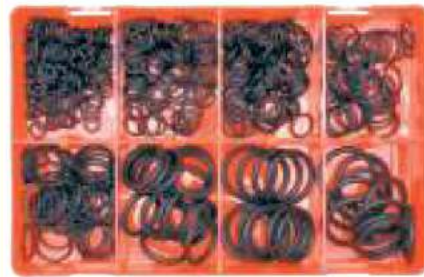


Washer Type	Average Quantity	Order Code
Fibre	600	KEN-615

Metric 'O' Rings

Contents: M6, M10, M11, M14, M17, M21, M24 and M25.

BEST SELLER



Type	Avg Qty	Weight each	Order Code
Metric 'O' Rings	400	0.30kg	KEN-615

SENATOR Fix-it Kits

Interior Circlips

These are constructed from durable spring steel and are black oxide treated for extra strength.

- Contents:**
- 3mm - x20, 14mm - x15,
 - 4mm - x10, 16mm - x20,
 - 5mm - x15, 19mm - x25,
 - 6mm - x25, 20mm - x15,
 - 8mm - x15, 22.5mm - x20,
 - 9mm - x20, 25mm - x15,
 - 11mm - x15, 26mm - x15,
 - 12mm - x15, 28mm - x10,
 - 13mm - x25, 32mm - x5.



Type	Average Quantity	Order Code
Internal Circlip Kit	300	SEN-615

Circlips

Contents: Internal: 14, 16, 19, 22, 24 and 25mm. External: 12, 14, 16, 19, 22, 24 and 25mm.

BEST SELLER



Type	Avg Qty	Weight each	Order Code
Circlips	380	0.5kg	KEN-615

E Clip Kit

Contents: 3.2, 4, 5, 6, 8, 10 and 12mm.



Type	Average Quantity	Order Code
E Clip Kit	355	KEN-615

Exterior Circlips

These are constructed from durable spring steel and are black oxide treated for extra strength.

- Contents:**
- 3mm - x20, 14mm - x15,
 - 4mm - x10, 16mm - x20,
 - 5mm - x15, 19mm - x25,
 - 6mm - x25, 20mm - x15,
 - 8mm - x15, 22.5mm - x20,
 - 9mm - x20, 25mm - x15,
 - 11mm - x15, 26mm - x15,
 - 12mm - x15, 28mm - x10,
 - 13mm - x25, 32mm - x5.



Type	Average Quantity	Order Code
External Circlip Kit	300	SEN-615

FASTENERS

PRODUCTS ARE ONLY AVAILABLE VIA YOUR DISTRIBUTOR

KENNEDY Fix-it
QUALITY INDUSTRIAL TOOLING Kits

**BEST
SELLER**

Spring Tension Pins

Contents:

2.5 x 24, 2.5 x 40, 3 x 25, 3 x 40, 4 x 24, 4 x 30, 5 x 25, 5 x 40, 6 x 25, 6 x 32 and 8 x 55mm.



Type	Avg Qty	Weight each	Order Code KEN-615
Roll Clips	300	0.80kg	-4500K

Dowel Pin Kit - Metric & Inch

Hardened and precision ground. **DIN 6325.**

Metric Sizes: 1.5 x 8mm through to 8 x 32mm.

Inch Sizes: 1/16" x 1/2" through to 3/8" x 2".



Metric/ Inch	Average Quantity	Order Code KEN-615
Metric	265	-4510K
Inch	345	-4520K

Clevis Pins

Contents: 3/16" x 5/8", 3/16" x 1", 1/4" x 3/4", 1/4" x 7/8", 1/4" x 1", 1/4" x 1 1/2", 5/16" x 3/4", 5/16" x 1", 5/16" x 1 1/4", 5/16" x 1 1/2", 5/16" x 1 3/4" and 3/8" x 1", 3/8" x 1 1/4".



Type	Avg Qty	Weight each	Order Code KEN-615
Clevis Pins	170	1.25kg	-4490K

Retaining Clips

Contents (D x L): 5 - 7 x 1.2, 7 - 9 x 1.2, 9 - 11 x 2, 14 - 16 x 3, 14 - 18 x 4mm.



Type	Avg Qty	Weight each	Order Code KEN-615
Retaining Clips	75	0.40kg	-4800K

Aluminium Dome Head Rivet Kit

Contents:

2.4 x 6mm - x200, 2.4 x 8mm - x200, 3.2 x 5mm - x100, 3.2 x 7mm - x100, 3.2 x 10mm - x100, 4.0 x 6mm - x75, 4.0 x 10mm - x75, 4.0 x 12mm - x60, 4.8 x 9mm - x50, 4.8 x 16mm - x40.



Type	Avg Qty	Weight each	Order Code KEN-615
Dome Head Rivets	1000	1.25kg	-4010K

Split Cotter Pins

Large:

1/8" x 1 1/2", 1/8" x 2", 9/64" x 2", 5/32" x 1 1/2", 5/32" x 2", 3/16" x 1 1/2", 3/16" x 2" and 1/4" x 2".

Small:

1/16" x 1", 5/64" x 1", 3/32" x 1", 1/8" x 1", 9/64" x 1 1/2", 1/16" x 1 1/2", 5/64" x 1 1/4", 3/32" x 1 1/2", 7/64" x 1 1/2", 1/8" x 1 1/2" and 5/32" x 1 1/2".

**BEST
SELLER**



Type	Avg Qty	Weight each	Order Code KEN-615
Large	200	1.35kg	-4420K
Small	1000	1.00kg	-4430K

Compression & Expansion Springs

**BEST
SELLER**

Contents:

Expansion Springs

Wire Dia. (mm)	Outside Dia. (mm)	Overall Length (mm)
0.70	6.29	31.5
0.50	4.70	40.0
0.60	6.29	51.5
0.60	6.29	64.5
0.60	4.70	58.0
0.80	9.80	70.0

Compression Springs

Wire Dia. (mm)	Outside Dia. (mm)	Overall Length (mm)
0.70	8.90	50.0
0.50	6.00	25.0
1.00	8.90	50.0
1.00	8.90	25.0
0.50	6.00	50.0
1.00	7.40	50.0



Type	Avg Qty	Weight each	Order Code KEN-615
Springs	140	0.55kg	-6590K

SENATOR Fix-it
QUALITY TOOLING Kits



Aluminium Rivet Assortment Kit

Supplied in a transparent plastic box.

Contents:

3.2 x 8mm - 20
3.2 x 9.5mm - 20
4.0 x 10mm - 20
4.8 x 9mm - 12
4.8 x 12.7mm - 12
4.8 x 16mm - 18

new



Type	Avg Qty	Order Code SEN-615
Rivets	102	-2300K

Assorted Split Cotter Pins

Zinc plated to prevent rust.

Contents:

1/16" x 1" - x150, 3/32" x 1" - x150, 3/32" x 1 1/2" - x100, 1/8" x 1 1/4" - x75, 1/8" x 2" - x50 and 5/32" x 2 1/2" - x30.



Type	Average Quantity	Order Code SEN-615
Assorted Split Cotter Pins	555	-7810K

KENNEDY Fix-it
QUALITY INDUSTRIAL TOOLING Kits

Woodruff Keys

Contents:

1/2" x 1/16", 1/2" x 3/32", 1/2" x 1/8", 5/8" x 3/32", 5/8" x 1/8", 5/8" x 5/32", 5/8" x 3/16 3/4", 1" x 1/8", 3/4" x 5/32", 3/4" x 3/16", 3/4" x 1/4", 7/8" x 5/32", 7/8" x 3/16", 7/8" x 7/32" and 7/8" x 1/4".



Washer Type	Average Quantity	Order Code KEN-615
Woodruff Keys	100	-4540K



KENNEDY Wire Thread
PROFESSIONAL Insert Kits

Suitable for repairing damaged and worn threads, also ideal for new applications. Ideal for use with alloys and other light materials. Can also be used for converting from metric to inch and vice versa. 1 1/2" x diameter in length. Other lengths are available on request. Each kit supplied with inserts, HSS hand tap, insertion tool and instructions.

Kits come complete with: Hand Tap, Inserting Tool and Inserts.

† Includes Punch.

* Includes Drill and Punch.



ISO Metric Threads

Thread Form	Tap Size	Clearance Drill Size	Inserts/Kit	Weight each	Order Code KEN-621
Metric M3 x 0.50*		3.20	10	105g	-1120K
Metric M4 x 0.70*		4.20	10	122g	-1160K
Metric M5 x 0.80*		5.20	10	142g	-1200K
Metric M6 x 1.00*		6.20	10	169g	-1240K
Metric M7 x 1.00*		7.20	10	190g	-1280K
Metric M8 x 1.00*		8.30	10	162g	-1320K
Metric M8 x 1.25*		8.30	10	180g	-1340K
Metric M10 x 1.00*		10.25	10	226g	-1400K
Metric M10 x 1.25*		10.25	10	226g	-1420K
Metric M10 x 1.50*		10.40	10	225g	-1430K
Metric M12 x 1.25†		12.25	10	309g	-1480K
Metric M12 x 1.50†		12.40	5	309g	-1490K
Metric M12 x 1.75†		12.50	5	290g	-1500K
Metric M14 x 1.25		14.25	5	459g	-1560K
Metric M14 x 1.50		14.25	5	325g	-1580K
Metric M14 x 2.00		14.50	5	325g	-1600K
Metric M16 x 1.50		16.50	5	343g	-1640K
Metric M16 x 2.00		16.50	5	354g	-1660K

UNC Threads

UNCNo.4 - 40*	No.31	10	109g	-2040K
UNCNo.8 - 32*	11/64"	10	123g	-2080K
UNC1/4" - 20*	17/64"	10	166g	-2160K
UNC5/16" - 18*	21/64"	10	201g	-2200K
UNC3/8" - 16*	25/64"	10	226g	-2240K
UNC 1/2" - 13	17/32"	10	293g	-2320K

UNF Threads

UNFNo.10 - 32*	13/64"	10	138g	-3100K
UNF1/4" - 28*	17/64"	10	160g	-3160K
UNF5/16" - 24*	21/64"	10	216g	-3200K
UNF3/8" - 24*	25/64"	10	218g	-3240K
UNF 1/2" - 20	33/64"	5	289g	-3320K

THREAD REPAIR

Threading Inserts

Range includes 1xD, 1.5xD and 2xD lengths (ISO Metric threads). Our quality inserts are now supplied in packs of 10 or 50. Other sizes and lengths are available on request, please ask for further information.



ISO Metric Threads Insert Length	Thread x Pitch	Clearance Drill (mm)	Packs of 10 Inserts	Packs of 50 Inserts	
			Order Code KEN-620	Order Code KEN-620	
1xD	M3 x 0.50	3.20	-5502K	-7402K	
	M4 x 0.70	4.20	-5504K	-7404K	
	M5 x 0.80	5.20	-5505K	-7405K	
	M6 x 1.00	6.20	-5506K	-7406K	
	M7 x 1.00	7.20	-5507K	-7407K	
	M8 x 1.00	8.30	-5508K	-7408K	
	M8 x 1.25	8.30	-5509K	-7409K	
	M10 x 1.00	10.25	-5512K	-7412K	
	M10 x 1.25	10.25	-5513K	-7413K	
	M10 x 1.50	12.25	-5514K	-7414K	
1.5xD	M3 x 0.50	3.20	-6010K	-7510K	
	M4 x 0.70	4.20	-6030K	-7530K	
	M5 x 0.80	5.20	-6050K	-7550K	
	M6 x 1.00	6.20	-6070K	-7570K	
	M7 x 1.00	7.20	-6090K	-7590K	
	M8 x 1.00	8.20	-6110K	-7610K	
	M8 x 1.25	8.30	-6120K	-7620K	
	M10 x 1.00	10.25	-6140K	-7640K	
	M10 x 1.25	10.25	-6150K	-7650K	
	M10 x 1.50	10.25	-6160K	-7660K	
2xD	M12 x 1.25	12.25	-6180K	-7680K	
	M12 x 1.50	12.25	-6190K	-7690K	
	M12 x 1.75	12.50	-6200K	-7700K	
	M14 x 1.25	14.25	-6220K	-7720K	
	M14 x 1.50	14.25	-6230K	-7730K	
	M14 x 2.00	14.50	-6240K	-7740K	
	M16 x 1.50	16.50	-6260K	-7760K	
	M16 x 2.00	16.50	-6270K	-7770K	
	UNC Threads	M3 x 0.50	3.20	-6302K	-7802K
		M4 x 0.70	4.20	-6304K	-7804K
M5 x 0.80		5.20	-6305K	-7805K	
M6 x 1.00		6.20	-6306K	-7806K	
M7 x 1.00		7.20	-6307K	-7807K	
M8 x 1.00		8.20	-6308K	-7808K	
M8 x 1.25		8.30	-6309K	-7809K	
M10 x 1.00		10.25	-6312K	-7812K	
M10 x 1.25		10.25	-6313K	-7813K	
M10 x 1.50		12.25	-6314K	-7814K	
UNF Threads	No.4 - 40	No.31	-6840K	-8340K	
	1.5xD	No.8 - 32	11/64"	-6880K	-8380K
		3/4" - 20	17/64"	-6900K	-8400K
	2xD	5/16" - 18	21/64"	-6910K	-8410K
		3/8" - 16	25/64"	-6920K	-8420K
		1/2" - 13	17/32"	-6940K	-8440K
		No.10 - 32	13/64"	-7090K	-8590K
	1.5xD	1/4" - 28	17/64"	-7100K	-8600K
		5/16" - 24	21/64"	-7110K	-8610K
		3/8" - 24	25/64"	-7120K	-8620K
1/2" - 20		33/64"	-7140K	-8630K	

The Fastener Reference Deskbook

This handy pocket-sized guide is designed to serve as a valuable tool for professional and student engineers alike.

Contents (84 pages):

- Abbreviations For Standard Threads
- Basic Measurements
- Common Fastener Dimensions
- Common Thread Forms & Drill Sizes
- DIN Fastener Index
- Screw Thread Types
- Self-Tapping Screws
- Stainless Steel Fasteners
- Steel Fasteners
- Surface Coatings
- Tightening Torques
- Terminology

"WIRO" BOUND



Order Code
CAT-849
-4157A

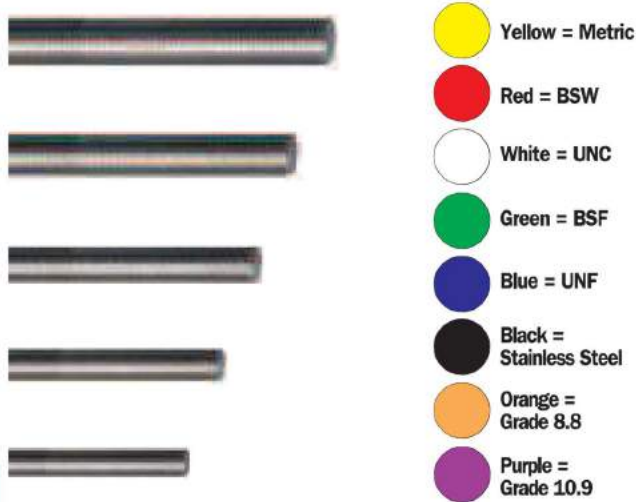
PRODUCTS ARE ONLY AVAILABLE VIA YOUR DISTRIBUTOR



DIN 975 High Quality Screwed Studding



Colour-coded at each end of length for easy identification as shown.



Mild Steel - Grade 4.6 Self-Colour

Thread	Length	Weight each	Order Code QFT-639
● Metric			
M5	300mm	36g	-0550K
M6	300mm	51g	-0560K
M8	300mm	93g	-0580K
M10	300mm	147g	-0600K
M12	300mm	213g	-0620K
M14	300mm	289g	-0640K
M16	300mm	365g	-0660K
M20	300mm	0.62kg	-0700K
M24	300mm	0.89kg	-0720K
M3	1m	42g	-0030K
M4	1m	75g	-0040K
M5	1m	120g	-0050K
M6	1m	170g	-0060K
M8	1m	310g	-0080K
M10	1m	490g	-0100K
M12	1m	710g	-0120K
M14	1m	970g	-0140K
M16	1m	1.31kg	-0160K
M20	1m	2.06kg	-0200K
M24	1m	2.95kg	-0240K
● BSW			
1/4"	3ft	157g	-3040K
5/16"	3ft	286g	-3050K
3/8"	3ft	452g	-3060K
7/16"	3ft	554g	-3070K
1/2"	3ft	665g	-3080K
5/8"	3ft	1.21kg	-3100K
3/4"	3ft	1.90kg	-3120K
1"	3ft	2.72kg	-3160K
● BSF			
1/4"	3ft	157g	-4040K
5/16"	3ft	286g	-4050K
3/8"	3ft	452g	-4060K
7/16"	3ft	554g	-4070K
1/2"	3ft	665g	-4080K

Thread	Length	Weight each	Order Code QFT-639
● Metric			
M3	1m	42g	-5203K
M4	1m	75g	-5204K
M5	1m	120g	-5205K
M6	1m	170g	-5206K
M8	1m	310g	-5208K
M10	1m	490g	-5210K
M12	1m	710g	-5212K
M14	1m	970g	-5214K
M16	1m	1.31kg	-5216K
M20	1m	2.06kg	-5220K
M24	1m	2.95kg	-5224K
○ UNC			
1/4"	3ft	157g	-5404K
5/16"	3ft	286g	-5405K
3/8"	3ft	452g	-5406K
7/16"	3ft	540g	-5407K
1/2"	3ft	655g	-5408K
5/8"	3ft	1.21kg	-5410K
3/4"	3ft	1.90kg	-5412K
7/8"	3ft	2.31kg	-5414K
1"	3ft	2.72kg	-5416K

High Tensile Steel - Grade 8.8

Thread	Length	Weight each	Order Code
● Metric			
M6	1m	170g	-6060K
M8	1m	310g	-6080K
M10	1m	490g	-6100K
M12	1m	710g	-6120K
M16	1m	1.31kg	-6160K
M20	1m	2.06kg	-6200K
M24	1m	2.95kg	-6240K

Stainless Steel A2

Thread	Length	Weight each	Order Code
● Metric			
M3	1m	42g	-7030K
M4	1m	75g	-7040K
M5	1m	120g	-7050K
M6	1m	170g	-7060K
M8	1m	310g	-7080K
M10	1m	490g	-7100K
M12	1m	710g	-7120K
M16	1m	1.31kg	-7160K
M20	1m	2.06kg	-7200K
M24	1m	2.95kg	-7240K

High Tensile Steel - Grade 8.8 BZP

Thread	Length	Weight each	Order Code
● Metric			
M6	1m	170g	-6406K
M8	1m	310g	-6408K
M10	1m	490g	-6410K
M12	1m	710g	-6412K
M14	1m	970g	-6414K
M16	1m	1.31kg	-6416K
M18	1m	1.75kg	-6418K
M20	1m	2.06kg	-6420K
M24	1m	2.95kg	-6424K

Brass

Thread	Length	Weight each	Order Code
● Metric			
M3	1m	42g	-8203K
M4	1m	75g	-8204K
M5	1m	120g	-8205K
M6	1m	170g	-8206K
M8	1m	310g	-8208K
M10	1m	490g	-8210K
M12	1m	710g	-8212K
M16	1m	1.31kg	-8216K
M20	1m	2.06kg	-8220K

FASTENERS



Studding Connectors

Studding connectors or coupling nuts are for connecting multiple lengths of threaded rod. Made from low carbon steel, bright zinc-plated. Manufactured to **DIN 6334**.



Thread	Length	Weight each	Order Code QFT-639
M6	18mm	8g	-9906K
M8	24mm	28g	-9908K
M10	30mm	40g	-9910K
M12	36mm	56g	-9912K
M16	48mm	113g	-9916K
M20	60mm	136g	-9920K
M24	72mm	160g	-9924K



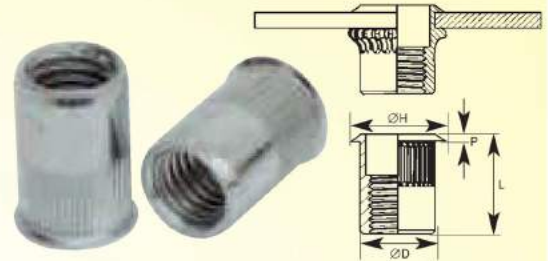
QUALFAST Rivet Nuts

All of our rivet nuts have a clear plating which is RoHS compliant - this is now the preferred finish across all industries as there is no chromium content as is the case with zinc and yellow finish.

Steel, Low Profile Head, Splined Body

The splines on the body bite into the parent material on installation, creating an improved torque resistance compared with standard round bodied rivet nuts. The low profile head creates a high load bearing feature but only results in minimal stand off between the adjoining panels.

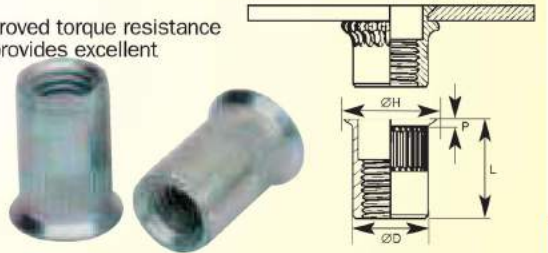
Size	Range (Grip)	Hole Size +0.1/-0.0	Dimensions				Box Qty	Order Code QFT-644
			D	H	P	L		
M4	0.5-2.5	6.4	6.3	7.1	0.5	10.5	500	-1004E
M5	0.5-3.0	7.2	7.1	8.1	0.6	12.0	500	-1005F
M6	0.7-3.5	9.6	9.5	10.5	0.6	15.0	250	-1006G
M8	1.0-3.5	10.6	10.5	11.5	0.6	16.0	250	-1008J
M10	1.0-4.0	12.8	12.7	13.9	0.6	20.0	100	-1016K



Steel, CSK Head, Splined Body

The splines on the body bite into the parent material on installation, creating an improved torque resistance compared with standard round bodied rivet nuts. The extra wide countersunk head provides excellent strength whilst leaving the nut flush with the material face.

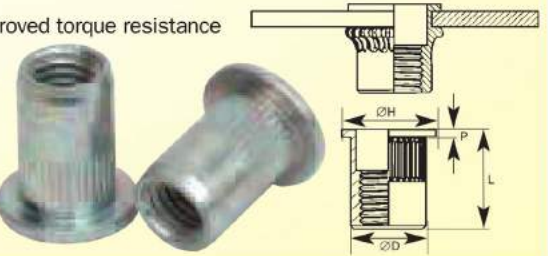
Size	Range (Grip)	Hole Size +0.1/-0.0	Dimensions				Box Qty	Order Code QFT-644
			D	H	P	L		
M4	2.0-3.5	6.0	5.9	9.0	1.5	11.6	500	-1044Y
M5	2.5-4.0	7.0	6.9	10.0	1.5	13.0	500	-1045Z
M6	2.5-4.5	9.0	8.9	12.0	1.5	16.0	250	-1046A
M8	2.5-4.5	11.0	10.9	14.0	1.5	18.5	250	-1048C
M10	2.5-4.5	13.0	12.9	15.0	1.5	22.0	100	-1070K



Steel, Large Flange, Splined Body

The splines on the body bite into the parent material on installation, creating an improved torque resistance compared with standard round bodied rivet nuts. The large flat head makes the fixing ideal for use in high load bearing situations.

Size	Range (Grip)	Hole Size +0.1/-0.0	Dimensions				Box Qty	Order Code QFT-644
			D	H	P	L		
M4	0.3-2.5	6.0	5.9	9.0	0.8	11.6	500	-1024B
M5	0.5-3.0	7.0	6.9	10.0	1.0	13.0	500	-1025C
M6	0.5-4.0	9.0	8.9	13.0	1.5	16.0	250	-1026D
M8	0.8-4.0	11.0	10.9	15.0	1.5	18.0	250	-1028F
M10	1.0-5.0	13.0	12.9	19.0	1.7	21.0	100	-1034K



Aluminium Rivets

For all applications of blind riveting. Aluminium rivet head with steel mandrel. Medium strength, use with aluminium and where rust is a problem. Select grip based on thickness of material to be riveted.

Dome Head



Body Ø mm	Length Below Shoulder	Box Qty	Order Code QFT-644
2.4	4mm	100	-2022Z
	6mm	100	-2026D
	8mm	100	-2030H
	5mm	100	-2042W
3.2	5mm	500	-2043X
	7mm	100	-2046A
	7mm	500	-2047B
	10mm	100	-2050E
	10mm	500	-2051F
	12mm	100	-2054E
	12mm	500	-2054M
	14mm	100	-2056E
	14mm	500	-2056M
	16mm	100	-2058E
16mm	500	-2058M	

Body Ø mm	Length Below Shoulder	Box Qty	Order Code QFT-644
4.0	6mm	100	-2062S
	6mm	500	-2063T
	8mm	100	-2065E
	8mm	500	-2065M
	10mm	100	-2066X
	10mm	500	-2067Y
	12mm	100	-2070B
	12mm	500	-2071C
	14mm	100	-2074E
	14mm	500	-2074M
4.8	16mm	100	-2077E
	16mm	500	-2077M
	9mm	500	-2082P
	9mm	50	-2083Q
	12mm	500	-2086T
	12mm	50	-2087V
	14mm	50	-2089B
	14mm	250	-2089H
	16mm	250	-2090Y
	16mm	50	-2091Z
18mm	50	-2094B	
18mm	250	-2094H	

Dome Head Rivets - Bulk Packed



Large Head



Body Ø mm	Length Below Shoulder	Box Qty	Order Code QFT-644
3.2	8mm	50	-5032K
	8mm	500	-5033L
	12mm	50	-5036P
	12mm	500	-5037Q
	16mm	50	-5040T
	16mm	500	-5041V
4.0	10mm	50	-5052G
	10mm	250	-5053H
	12mm	250	-5057M
	16mm	25	-5060Q
	16mm	250	-5061R
	12mm	25	-5072D
4.8	12mm	250	-5073E
	16mm	20	-5076H
	16mm	100	-5077J
	20mm	20	-5080M
	20mm	100	-5081N

Countersunk



Body Ø mm	Length Below Shoulder	Box Qty	Order Code QFT-644
3.2	8mm	100	-1132K
	8mm	500	-1133L
	12mm	100	-1136P
	12mm	500	-1137Q
	15mm	100	-1140T
4.0	15mm	500	-1141V
	10mm	100	-1152G
	10mm	500	-1153H
	12mm	100	-1156L
	12mm	500	-1157M
	16mm	50	-1160Q
	16mm	500	-1161R
4.8	12mm	50	-1172D
	12mm	500	-1173E
	16mm	50	-1176H
	16mm	250	-1177J
	20mm	50	-1180M
	20mm	250	-1181N

PRODUCTS ARE ONLY AVAILABLE VIA YOUR DISTRIBUTOR

QUALFAST E-Clips



E-clips simplify designs and linked with lower installation costs are the ideal item for replacing more traditional fasteners. All are manufactured from carbon steel with a phosphate finish. Conform to **DIN 6799**.



Metric		
Dia. (mm)	Pack Qty	Order Code QFT-649
1.2	200	-3992P
1.5	200	-3995S
1.9	200	-3998W
2.3	200	-4001A
3.2	200	-4003C
4.0	100	-4004D
5.0	100	-4005E
6.0	100	-4006F
7.0	100	-4007G
8.0	50	-4008H
9.0	25	-4009J
10.0	25	-4010K
12.0	25	-4012M

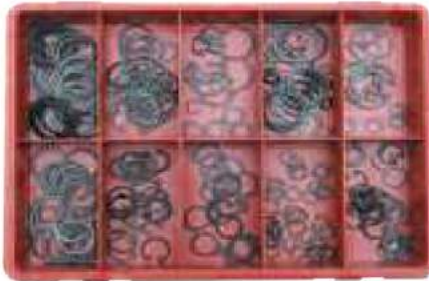
KENNEDY Fix-it Kits

BEST SELLER

Circlips

Contents:

Internal: 14, 16, 19, 22, 24 and 25mm.
External: 12, 14, 16, 19, 22, 24 and 25mm.



Avg Qty	Weight each	Order Code KEN-615
380	0.5kg	-4470K

E Clip Kit

Contents: 3.2, 4, 5, 6, 8, 10 and 12mm.



Average Quantity	Order Code KEN-615
355	-4475K

QUALFAST Circlips



Circlips simplify designs and linked with lower installation costs are the ideal item for replacing more traditional fasteners. Manufactured from carbon steel with a phosphate finish.

External



External DIN 471

Metric		
Dia. (mm)	Pack Qty	Order Code QFT-649
3	100	-2003C
4	100	-2004D
5	100	-2005E
6	100	-2006F
7	100	-2007G
8	50	-2008H
9	50	-2009J
10	50	-2010K
11	50	-2011L
12	50	-2012M
13	50	-2013N
14	50	-2014P
15	50	-2015Q
16	40	-2016R
17	40	-2017S
18	25	-2018T
19	25	-2019V
20	25	-2020W
24	25	-2024Y
25	25	-2025A
26	25	-2026B
27	25	-2027C
28	25	-2028D
29	25	-2029E
30	25	-2030F

Internal



Internal DIN 472

Metric		
Dia. (mm)	Pack Qty	Order Code QFT-649
8	50	-2208H
9	50	-2209J
10	50	-2210K
11	50	-2211L
12	50	-2212M
13	50	-2213N
14	50	-2214P
15	50	-2215Q
16	40	-2216R
17	40	-2217S
18	25	-2218T
19	25	-2219V
20	25	-2220W
21	25	-2221X
22	25	-2222Y
23	25	-2223Z
24	25	-2224A
25	25	-2225B
26	25	-2226C
27	25	-2227D
28	25	-2228E
29	25	-2229F
30	25	-2230C

QUALFAST Extractable Dowels

new



Parallel Pin, Metric - Steel - Standard (Self - Colour)

Internal Thread Hardened.
DIN 7979 D. Steel 60 ± 2HRC.



Metric			
Dia.	Length	Weight per 100	Order Code QFT-650
5	12	160g	-0238G
	16	180g	-0238K
	20	200g	-0238M
	24	300g	-0238P
	30	330g	-0238T
6	40	330g	-0238Y
	16	150g	-0239K
	20	180g	-0239M
	24	220g	-0239P
	28	260g	-0239S
	30	270g	-0239T
	32	290g	-0239V
	40	350g	-0239Y
	45	400g	-0239Z
	50	440g	-0240A
8	60	540g	-0240C
	16	270g	-0241K
	20	320g	-0241M
	24	390g	-0241P
	28	430g	-0241S
	30	470g	-0241T
	32	500g	-0241V
	36	550g	-0241X
	40	630g	-0241Y
	45	710g	-0241Z
10	50	790g	-0242A
	60	910g	-0242C
	70	990g	-0242E
	80	1200g	-0242G

Dia.	Length	Weight per 100	Order Code QFT-650
10	20	490g	-0243M
	24	620g	-0243P
	28	680g	-0243S
	30	740g	-0243T
	32	800g	-0243V
	36	860g	-0243X
	40	1.00kg	-0243Y
	45	1.09kg	-0243Z
	50	1.27kg	-0244A
	60	1.45kg	-0244C
12	70	1.72kg	-0244E
	80	2.00kg	-0244G
	100	2.82kg	-0244K
	24	900g	-0245P
	30	1.09kg	-0245T
	32	1.17kg	-0245V
	36	1.27kg	-0245X
	40	1.45kg	-0245Y
	45	1.63kg	-0245Z
	50	1.81kg	-0246A
16	60	2.18kg	-0246C
	70	2.45kg	-0246E
	80	2.81kg	-0246G
	100	3.54kg	-0246K
	32	1.00kg	-0249V
	40	1.26kg	-0249Y
	50	1.58kg	-0250A
	60	1.90kg	-0250C
	70	2.20kg	-0250E
	80	2.50kg	-0250G
20	90	2.90kg	-0250J
	100	3.15kg	-0250K
	120	3.82kg	-0250M
	50	1.98kg	-0252A
	60	2.38kg	-0252C
	70	2.75kg	-0252E
20	80	3.13kg	-0252G
	100	3.94kg	-0252K

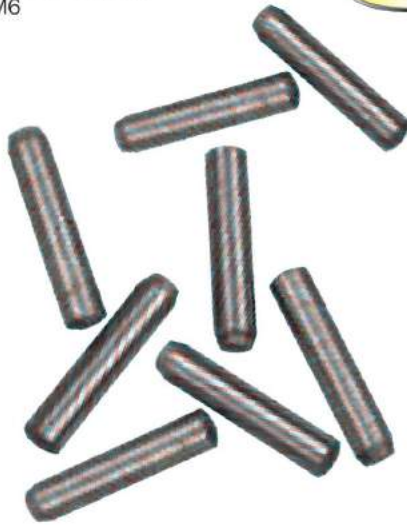


QUALFAST

Industrial Solid Dowel Pins

Parallel Pin, Metric - Steel - Hardened
Tolerance - Zone - m6

DIN 6325
Steel 60 ± 2HRC
M6



Metric			
Diameter (mm)	Length mm	Weight per 100	Order Code QFT-650
2	6	34g	-0267D
	8	100g	-0267E
	10	125g	-0267F
	12		-0267G
	14		-0267H
	16	150g	-0267K
2.5	20	180g	-0267M
	6	36g	-0268D
	8	38g	-0268E
	10	40g	-0268F
3	12	45g	-0268G
	16		-0268K
	6	110g	-0270D
	8	120g	-0270E
	10	130g	-0270F
	12	140g	-0270G
	14	145g	-0270H
	16	150g	-0270K
4	18	165g	-0270L
	20	180g	-0270M
	24	188g	-0270P
	28	200g	-0270S
	30	210g	-0270T
	36		-0270X
	40	300g	-0270Y
	50	380g	-0271A
	6	75g	-0272D
	8	87g	-0272E
10	100g	-0272F	
12	150g	-0272G	
14	200g	-0272H	
16	220g	-0272K	
18	230g	-0272L	
20	240g	-0272M	
24	280g	-0272P	
28	307g	-0272S	
30	310g	-0272T	
32	330g	-0272V	
36	405g	-0272X	
40	410g	-0272Y	
45	495g	-0272Z	
50	600g	-0273A	
8	160g	-0274E	
10	200g	-0274F	
12	220g	-0274G	
14	280g	-0274H	
16	300g	-0274K	
18	350g	-0274L	
20	400g	-0274M	
24	420g	-0274P	
25	420g	-0274S	
30	500g	-0274T	
32	540g	-0274V	
36	620g	-0274X	
40	640g	-0274Y	
45	720g	-0274Z	
50	800g	-0275A	

Metric . . . continued			
Diameter (mm)	Length mm	Weight per 100	Order Code QFT-650
6	10	410g	-0276F
	12	430g	-0276G
	14	450g	-0276H
	16	470g	-0276K
	18	480g	-0276L
	20	500g	-0276M
	24	530g	-0276P
	28	660g	-0276S
	30	700g	-0276T
	32	740g	-0276V
	36	820g	-0276X
	40	900g	-0276Y
	45		-0276Z
	50	1.10kg	-0277A
	55	1.25kg	-0277B
	60	1.40kg	-0277C
	70		-0277E
	80	1.60kg	-0277G
10	250g	-0278F	
12		-0278G	
16	700g	-0278K	
18	740g	-0278L	
20	780g	-0278M	
24	960g	-0278P	
28	1.10kg	-0278S	
30	1.20kg	-0278T	
32	1.28kg	-0278V	
36	1.40kg	-0278X	
40	1.60kg	-0278Y	
45	1.80kg	-0278Z	
50	2.00kg	-0279A	
55	2.150g	-0279B	
60	2.30kg	-0279C	
70	2.50kg	-0279E	
80	3.00kg	-0279G	
90	3.35kg	-0279J	
100	4.00kg	-0279K	
12		-0280G	
16		-0280K	
20	1.30kg	-0280M	
24	1.60kg	-0280P	
28	1.90kg	-0280S	
30	1.90kg	-0280T	
32	2.00kg	-0280V	
36	2.28kg	-0280X	
40	2.50kg	-0280Y	
45	2.80kg	-0280Z	
50	3.20kg	-0281A	
55	3.40kg	-0281B	
60	37.0kg	-0281C	
70	4.30kg	-0281E	
80	5.00kg	-0281G	
90	5.70kg	-0281J	
100	7.10kg	-0281K	
20	2.20kg	-0282M	
24	2.30kg	-0282P	
28	2.65kg	-0282S	
30	2.80kg	-0282T	
32	3.00kg	-0282V	
36	3.20kg	-0282X	
40	7.30kg	-0282Y	
45	4.10kg	-0282Z	
50	4.60kg	-0283A	
55	5.05kg	-0283B	
60	5.50kg	-0283C	
70	6.20kg	-0283E	
80	7.10kg	-0283G	
90	8.00kg	-0283J	
100	8.90kg	-0283K	
36	5.60kg	-0286X	
40	6.30kg	-0286Y	
50	7.90kg	-0287A	
60	9.50kg	-0287C	
80	12.00kg	-0287G	
100	15.80kg	-0287K	
120	19.20kg	-0287M	
40	9.80kg	-0288Y	
50	12.30kg	-0289A	
60	14.80kg	-0289C	
70	17.30kg	-0289E	
80	19.80kg	-0289G	
100	24.60kg	-0289K	
120	29.00kg	-0289M	

KENNEDY Industrial Solid Dowel Pins

GROUP 650

Sizes 1/16" and 1/8" are manufactured from non-hardened silver steel, 3/16" and above are high quality case hardened mild steel.



Tolerances:
All sizes = +0.001" +0.003".

Inch			
Diameter (mm)	Length mm	Weight per 100	Order Code KEN-650
1/16"	1/2"	100g	-4100K
	1/4"	110g	-4620K
	3/8"	120g	-4660K
	1/2"	130g	-4700K
1/8"	5/8"	140g	-4740K
	3/4"	150g	-4760K
	7/8"	170g	-4780K
	1"	200g	-4800K
	1 1/2"	300g	-4880K
	2"	600g	-4960K
3/16"	1 1/2"	280g	-5500K
	5/8"	300g	-5540K
	3/4"	400g	-5560K
	1"	500g	-5600K
	1 1/4"	550g	-5640K
	1 1/2"	600g	-5680K
1/4"	1 3/4"	650g	-5690K
	2"	800g	-5760K
	3/8"	300g	-6280K
	1/2"	400g	-6300K
	5/8"	500g	-6340K
	3/4"	550g	-6360K
	7/8"	605g	-6380K
	1"	700g	-6400K
	1 1/4"	820g	-6440K
	1 1/2"	1.10kg	-6480K
5/16"	1 3/4"	1.20kg	-6520K
	2"	1.40kg	-6560K
	2 1/4"	1.80kg	-6600K
	2 1/2"	2.80kg	-6640K
	3"	1.90kg	-6720K
	1 1/2"	600g	-6850K
	3/4"	800g	-6860K
	1"	1.20kg	-6900K
3/8"	1 1/4"	1.40kg	-6940K
	1 1/2"	1.60kg	-6980K
	1 3/4"	2.00kg	-7020K
	2"	2.20kg	-7060K
	2 1/2"	2.80kg	-7140K
	3"	3.20kg	-7220K
	3 1/2"	3.90kg	-7300K
	5/8"	1.10kg	-7420K
	3/4"	1.30kg	-7460K
	1"	1.60kg	-7500K
1/2"	1 1/4"	2.10kg	-7540K
	1 1/2"	2.40kg	-7580K
	1 3/4"	2.80kg	-7620K
	2"	3.10kg	-7660K
	2 1/4"	3.40kg	-7700K
	2 1/2"	3.90kg	-7740K
	3"	4.60kg	-7820K
	3 1/2"	5.80kg	-7900K
	4"	7.00kg	-7960K
	5/8"	1.80kg	-8060K
5/8"	3/4"	2.30kg	-8080K
	1"	3.00kg	-8100K
	1 1/4"	3.70kg	-8140K
	1 1/2"	4.10kg	-8180K
	1 3/4"	4.80kg	-8220K
	2"	6.00kg	-8260K
	2 1/4"	6.10kg	-8300K
	2 1/2"	6.80kg	-8340K
	2 3/4"	12.20kg	-8380K
	3"	8.00kg	-8420K
3 1/2"	9.30kg	-8480K	
3/4"	4"	10.70kg	-8520K
	1"	5.00kg	-8680K
	1 1/4"	6.80kg	-8700K
	1 1/2"	7.20kg	-8720K
	2"	8.60kg	-8760K
	3"	12.20kg	-8920K
5/8"	3 1/2"	14.60kg	-8960K
	4"	16.30kg	-9000K
	1 1/2"	9.20kg	-9160K
	2"	10.04kg	-9180K
3/4"	4"	15.20kg	-9280K
	3"	18.20kg	-9940K

FASTENERS

PRODUCTS ARE ONLY AVAILABLE VIA YOUR DISTRIBUTOR

MATLOCK O-Clips

Manufactured from zinc-plated mild steel. Medium pressure clamp, widely used for maintenance and OEM applications. Rubber hose, plastic tubing, coaxial and electrical cable are easily clamped. Suitable for use on air, fluid, gas and steam lines also low pressure hydraulics applications. One-piece design offers a positive, tamperproof seal without damage to the hose, assure adequate closure and compensate for tolerance variations in hose sizes.

Pack quantity: 100.

Double Ear



N.B. Gas hoses should only be assembled by professionally qualified fitters

Size	Capacity (mm)	Order Code MTL-662
Double Ear Style		
9T	7 - 9	-7060K
11T	8 - 11	-7070K
13T	11 - 13	-7090K
15T	13 - 15	-7100K
18T	15 - 18	-7120K
20T	17 - 20	-7140K
23T	20 - 23	-7160K
Single Ear Style		
9S	7 - 9	-6920K
10S	8 - 10	-6930K
11S	9 - 11	-6940K
12S	10 - 12	-6950K
13S	11 - 13	-6960K
14S	12 - 14	-6970K
16S	14 - 16	-6980K
18S	16 - 18	-6990K

Welding Hose Clip Sets

Manufactured from zinc-plated mild steel. **75 Piece Double Ear O-Clip Assorted Set** Size range: 9T to 18T



165 Piece Double Ear O-Clip & Pincer Kit

Size range: 13T to 20T



No. of Pieces	Order Code MTL-662
75	-7200K
165	-7210K

KENNEDY O-clip Pincers

O-clip pincers are designed for rapidly closing O-clips ensuring a positive tamperproof seal. Manufactured from chrome vanadium steel with induction hardened, ground and polished jaws. Bonded vinyl-coated handle.

Overall length: 200mm.



Length (mm)	Order Code KEN-558
200	-1000K

Rubber-Lined P-Clips

All clips lined in EPM rubber which is fully resilient to oils and extreme temperatures (-50°C to 160°C). Applications include automotive engine compartment and chassis, electrical cables, pipework, ducting, refrigeration and machine installations.



Capacity (mm)	Order Code MTL-662
Mild Steel - Zinc-Plated	
4	-8520K
5	-8530K
6	-8540K
8	-8550K
10	-8560K
13	-8570K
16	-8580K
19	-8590K
21	-8600K
22	-8610K
25	-8620K
27	-8630K
30	-8640K
32	-8650K
35	-8660K
38	-8670K
40	-8680K
Stainless Steel	
5	-8830K
6	-8840K
8	-8850K
10	-8860K
13	-8870K
16	-8880K
18	-8890K
20	-8900K
21	-8910K
22	-8920K
25	-8930K
28	-8940K
30	-8950K
32	-8960K
34	-8970K
38	-8980K
40	-8990K

Terry Type Spring Clips BZP

High quality spring steel clips with bright zinc plated finish (BZP). Ideal for securing tools, pipes etc.

Pack quantity: 100.



Size	Capacity (mm)	Order Code MTL-662
Open Type		
T1	6	-1000K
T2	10	-1010K
T3	12	-1020K
T4	16	-1030K
T5	20	-1040K
T6	25	-1050K
T7	32	-1060K
T8	38	-1070K
T9	50	-1080K
Closed Type		
C1	6	-2100K
C2	10	-2110K
C3	12	-2120K
C4	16	-2130K
C5	20	-2140K
C6	25	-2150K
C7	32	-2160K
C8	38	-2170K
C9	50	-2180K
Assorted Packs		
Type	No. of Pieces	Order Code MTL-662
Open	160	-1180K
Closed	124	-2280K

MATLOCK Saddle Clamps

Widely used for fixing pipes and cables in all industries.

Half Saddle Clamps - Heavy Duty DIN1596.



Type	Size (mm)	Order Code MTL-662
1-Pipe	7	-7700K
	9	-7710K
	13	-7720K
	15.5	-7730K
	19	-7740K
	23	-7750K
	26	-7760K
	28.5	-7770K
	31	-7780K
	33	-7790K

Twin Saddle Clamps DIN72572.



Size (mm)	Order Code MTL-662
5	-7850K
6	-7860K
7	-7870K
8	-7880K
10	-7890K
12	-7900K
15	-7910K
18	-7920K
20	-7930K
22	-7940K

Half Saddle Clamps - Light Duty DIN72571.



Type	Size (mm)	Order Code MTL-662
1-Pipe	4	-7300K
	5	-7310K
	6	-7320K
	7	-7330K
	8	-7340K
	10	-7350K
2-Pipe	12	-7360K
	16	-7370K
	4	-7400K
	5	-7410K
	6	-7420K
	7	-7430K
	8	-7440K
	10	-7450K
	12	-7460K

Full Saddle Clamps - Light Duty DIN72573.



Type	Size (mm)	Order Code MTL-662
1-Pipe	4	-7470K
	5	-7480K
	6	-7490K
	7	-7500K
	8	-7510K
	10	-7520K
	12	-7530K
	15	-7540K
	18	-7550K
	20	-7560K
2-Pipe	22	-7570K
	4	-7600K
	5	-7610K
	6	-7620K
	8	-7630K
	10	-7640K

MATLOCK

Zinc-Plated Hose Clips BZP

Non-slip worm drive. Precision manufactured from the finest steel to **DIN 3017**. Passivated zinc finish to give double protection. For automotive, gas, plumbing and agricultural applications.



ZINC-PLATED

Size	Capacity (mm)	Order Code MTL-662
000	8-12	-5050K
M00	10-16	-5070K
00	12-20	-5090K
0	12-22	-5110K
0X	16-27	-5130K
1A	20-32	-5150K
1	23-35	-5160K
1X	25-40	-5170K
2A	32-50	-5190K
2	40-55	-5210K
2X	40-60	-5230K
3	50-70	-5250K
3X	60-80	-5270K
4	70-90	-5290K
4X	80-100	-5310K
5	90-110	-5330K
6	110-120	-5350K
6X	120-140	-5370K

Zinc-Plated Hose Clip Sets

50 piece set contains sizes 000 to size 2X. (8mm to 60mm dia.), 4 x 000 - quantities as below. **100 piece set contains double these quantities.**

4 x 000	3 x 1A	2 x 2X	1 x 5
4 x M00	5 x 1	2 x 3	1 x 6
6 x 00	3 x 1X	1 x 3X	1 x 6X
4 x 0	2 x 2A	2 x 4	1 x 7
3 x 0X	3 x 2	1 x 4X	1 x 8



ZINC-PLATED

Number of Pieces	Weight each	Order Code MTL-662
50	1.50kg	-5950K
100	3.00kg	-5990K

Quick Release Stainless Steel Hose Clips

STAINLESS STEEL

Easy to fit, quick clamps. The swivel-action locking of screw band makes both installation and removal fast and easy. Ideal for use in difficult positions and applications. Precision manufactured from the finest steel to **DIN 3017**.

Band and Housing Material:

210/301.

Stainless Steel Screw:

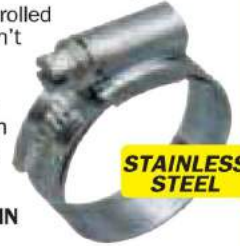
³/₁₆" Hex-Head 410.



Capacity (mm)	Order Code MTL-662
25-101	-6020K
44-178	-6040K
44-217	-6060K
44-406	-6080K
44-559	-6100K
51-127	-6120K
51-254	-6140K
52-152	-6160K
52-312	-6180K
355-508	-6300K
362-457	-6320K

Stainless Steel Hose Clips

Clamps incorporate rolled band edges that won't cut hose, stamped threads for uniform tensioning and one-piece stamped worm housing for superior strength. Precision manufactured from the finest steel to **DIN 3017**.



STAINLESS STEEL

Size	Capacity (mm)	Order Code MTL-662
000	8-12	-4050K
M00	10-16	-4070K
00	12-20	-4090K
0	12-22	-4110K
0X	16-27	-4130K
1A	20-32	-4150K
1	23-35	-4160K
1X	25-40	-4170K
2A	32-50	-4190K
2	40-55	-4210K
2X	40-60	-4230K

Stainless Steel Hose Clip Set

Contains sizes 000 to size 2X. (8mm to 60mm dia.).

STAINLESS STEEL

4 x 000	6 x 0	5 x 1	3 x 2X
4 x M00	5 x 0X	4 x 1X	
8 x 00	4 x 1A	3 x 2A	



Number of Pieces	Weight each	Order Code MTL-662
50	700g	-5960K

40 Piece Hose Clip - Assortment Kit

Supplied in a transparent plastic box.

Contents:

- 12.7mm - 5
- 16mm - 7
- 19mm - 10
- 22mm - 4
- 25mm - 3
- 27mm - 3
- 35mm - 4
- 38mm - 4



new

Order Code
SEN-615
-2200K

Hose Clip Service Set

Manufactured from zinc-plated mild steel. Supplied in service case with Flex-Driver.

- 30 x 000
- 30 x M00
- 25 x 0
- 25 x 0X
- 12 x 1A
- 12 x 1X
- 6 x 2A



No. of Pieces	Order Code MTL-662
140	-6000K

Hose Clip Flex-Driver

Bends through 90° to reach otherwise inaccessible clips. High impact Hi Grip handle. Drive shaft has ¹/₄" hex drive fitted with 7mm (single hex) removable adaptor. Also features swivel collar at drive end.



Length (mm)	Weight each	Order Code MTL-662
280	160g	-9990K

HOSE CLIPS & PIPE CLIPS

GROUP
662

Nut & Bolt Clips

ZINC-PLATED



'Junior' Style

Ideal for use on petrol pipes and small bore hoses. 7mm A/F screw, 1.2Nm maximum tightening torque.



Size	Capacity (mm)	Order Code MTL-662
J09	7-9	-8060K
J10	8-10	-8070K
J11	9-11	-8080K
J12	10-12	-8090K
J13	11-13	-8100K
J14	12-14	-8110K
J15	13-15	-8120K
J16	14-16	-8130K
J17	15-17	-8140K
J18	16-18	-8150K

Nut & Bolt Clips Sets

Assorted clip sets.

Capacity:
7 to 20mm.



Number of Pieces	Order Code MTL-662
65	-8180K
160	-8190K

Heavy Duty Bolt Clamps

'Super' Style

High band tension for sealing pressure/suction lines with either steel or plastic reinforcement. W2 material. Band grade 430 stainless steel.

Housing/bolt 8.8 grade BZP.

DIN 3017.



Size	Capacity (mm)	Order Code MTL-662
S19	17-19	-9010K
S22	20-22	-9020K
S25	23-25	-9030K
S28	26-28	-9040K
S31	29-31	-9050K
S35	32-35	-9060K
S39	36-39	-9070K
S43	40-43	-9080K
S47	43-47	-9090K
S51	47-51	-9100K
S55	51-55	-9110K
S59	55-59	-9120K
S63	59-63	-9130K
S68	63-68	-9140K
S73	68-73	-9150K
S79	73-79	-9160K
S85	79-85	-9170K
S91	85-91	-9180K
S97	91-97	-9190K
S104	97-104	-9200K
S112	104-112	-9210K
S121	112-121	-9220K
S130	121-130	-9230K
S140	130-140	-9240K
S150	140-150	-9250K
S162	150-162	-9260K
S174	162-174	-9270K
S187	174-187	-9280K
S200	187-200	-9290K
S213	200-213	-9300K
S226	213-226	-9310K
S239	226-239	-9320K
S252	239-252	-9330K

PRODUCTS ARE ONLY AVAILABLE VIA YOUR DISTRIBUTOR

665