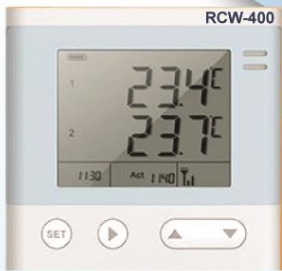


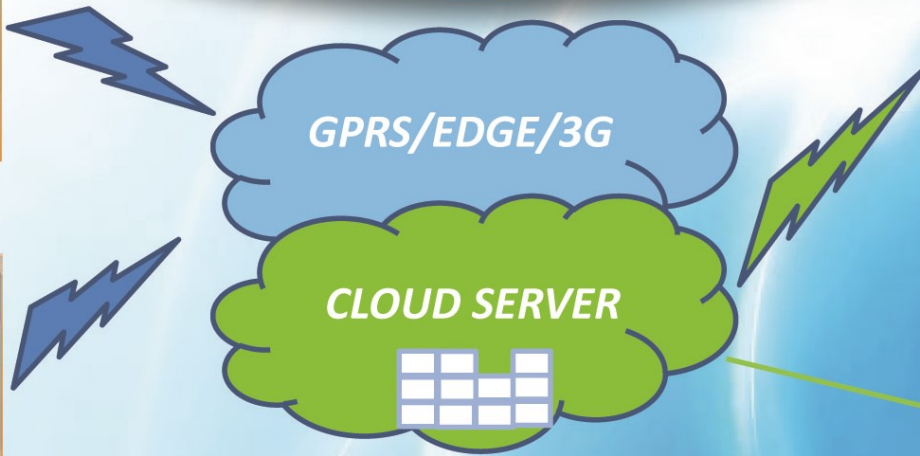


**EXCEL TEST SDN BHD**

# Online Web/SMS Enable Temperature / Humidity / Power Monitor Alarm



**RCW-400**




**24/7 SMS Alert**  
 - Temperature  
 - R. Humidity  
 - Power failure

**24/7 Monitor Cold Room Temperature / R. Humidity / Power Condition**  
 Alarm Alert via APPS / SMS / Phone Call  
 GSP Certified, Up to 5 years Cloud Data Storage



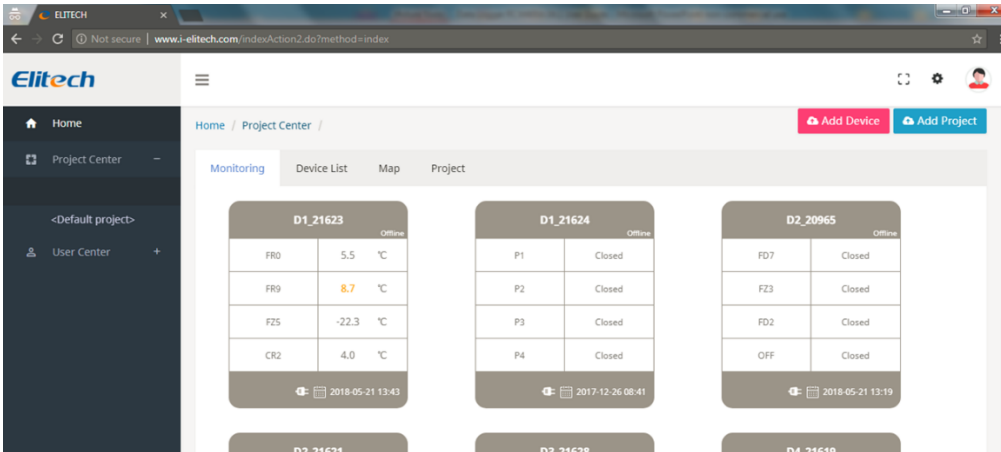
**Web Access Features:**  
 1. System Configuration  
 2. Data View & Download  
 3. Alarm event report.

**Other Features of RCW-400:**

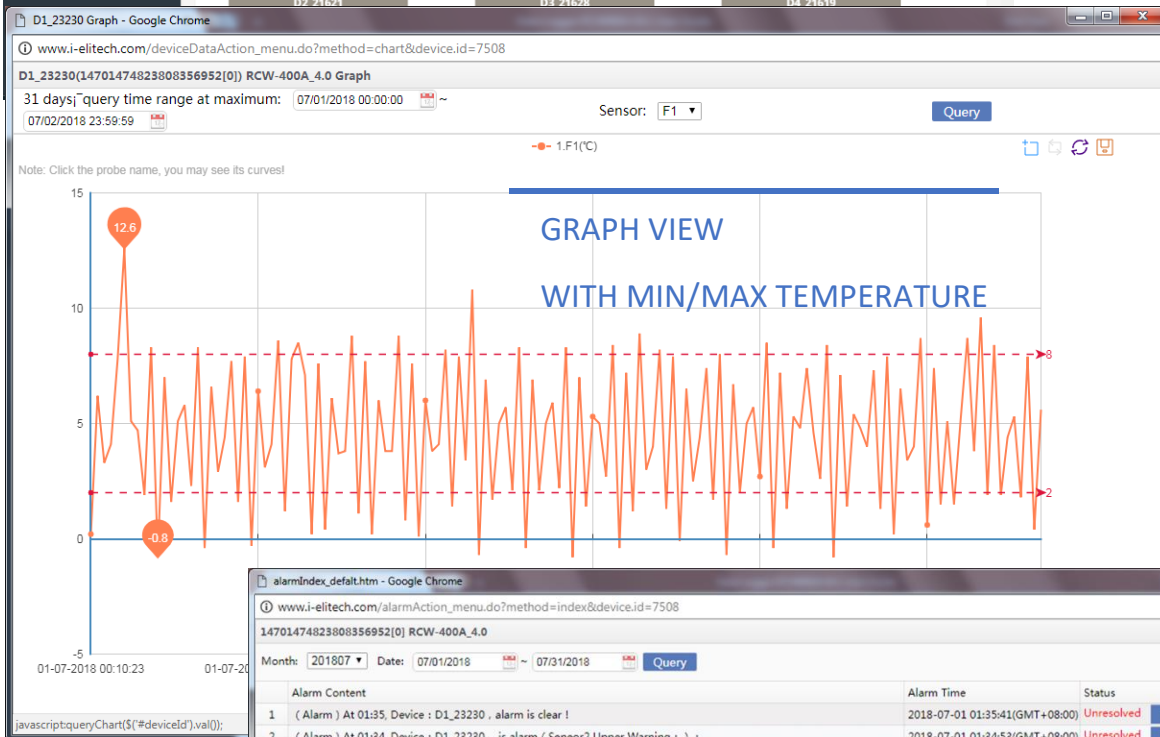
- Temperature range: -40–70°C, ±0.5°C
- R. Humidity range: 10–90%rh, ±0.5%rh
- Internal Buzzer & External Alarm Relay
- Internal Storage up to 20,000 readings
- Up to 5 years Cloud Data Storage
- Internal up to 6 hour Backup Lithium battery
- Maximum 4 Temperature probes
- Communication: GPRS, 3g & SMS

**GSP: Good Supply Practice for pharmaceutical products**

# RCW-400 KEY CLOUD SOFTWARE FEATURES:



REALTIME  
TEMPERATURE VIEW



GRAPH VIEW  
WITH MIN/MAX TEMPERATURE

Alarm Content	Alarm Time	Status	Handler
1 ( Alarm ) At 01:35, Device : D1_23230 , alarm is clear !	2018-07-01 01:35:41(GMT+08:00)	Unresolved	Deal
2 ( Alarm ) At 01:34, Device : D1_23230 , is alarm ( Sensor2 Upper Warning : ) :	2018-07-01 01:34:53(GMT+08:00)	Unresolved	Deal

TEMPERATURE EXCURSION ALARM  
RECORD VIEW

Logging Time	F1	F2	sp3	sp4	Alarm
1 2018-07-02 11:20:11(GMT+08:00)	5.6°C			Closed	Normal
2 2018-07-02 11:05:11(GMT+08:00)	0.4°C Warning			Closed	Normal
3 2018-07-02 10:50:11(GMT+08:00)	7.9°C			Closed	Normal
4 2018-07-02 10:35:11(GMT+08:00)	1.8°C Warning			Closed	Normal
5 2018-07-02 10:20:12(GMT+08:00)	5.3°C			Closed	Normal
6 2018-07-02 10:05:12(GMT+08:00)	4.4°C	5.0°C	Closed	Closed	Normal
7 2018-07-02 09:50:12(GMT+08:00)	1.9°C Warning	5.4°C	Closed	Closed	Normal
8 2018-07-02 09:35:12(GMT+08:00)	8.4°C Warning	8.3°C Warning	Closed	Closed	Normal
9 2018-07-02 09:20:13(GMT+08:00)	1.9°C Warning	5.2°C	Closed	Closed	Normal
10 2018-07-02 09:05:13(GMT+08:00)	9.6°C Warning	9.1°C Warning	Closed	Closed	Normal
11 2018-07-02 08:50:13(GMT+08:00)	3.8°C	4.7°C	Closed	Closed	Normal
12 2018-07-02 08:35:13(GMT+08:00)	8.7°C Warning	9.0°C Warning	Closed	Closed	Normal
13 2018-07-02 08:20:14(GMT+08:00)	5.2°C	5.6°C	Closed	Closed	Normal
14 2018-07-02 08:05:14(GMT+08:00)	1.5°C Warning	5.0°C	Closed	Closed	Normal
15 2018-07-02 07:50:15(GMT+08:00)	5.1°C	5.5°C	Closed	Closed	Normal
16 2018-07-02 07:35:15(GMT+08:00)	1.5°C Warning	5.0°C	Closed	Closed	Normal
17 2018-07-02 07:20:16(GMT+08:00)	7.4°C	7.5°C	Closed	Closed	Normal
18 2018-07-02 07:05:16(GMT+08:00)	0.6°C Warning	3.0°C	Closed	Closed	Normal
19 2018-07-02 06:50:16(GMT+08:00)	8.7°C Warning	8.8°C Warning	Closed	Closed	Normal
20 2018-07-02 06:35:16(GMT+08:00)	4.0°C	4.7°C	Closed	Closed	Normal
21 2018-07-02 06:20:17(GMT+08:00)	3.4°C	6.6°C	Closed	Closed	Normal
22 2018-07-02 06:05:17(GMT+08:00)	6.5°C	6.6°C	Closed	Closed	Normal

TEMPERATURE  
RECORD TABLE VIEW