

# QL/QLE2

Ratchet Head  
Type Adjustable  
Torque Wrench

Assembly Adjustable Ratchet Head Graduation

RoHS

- Basic adjustable click style with resin grip
- Torque value easily set with external scale and knob

Direction



## QL/QL-MH Optional Accessories



842

846

### Carrying Case (P.45)

Part #	Applicable Model Dimension [mm]
842	QL50N, QL50N-MH, QL100N4-MH H80 × W400 × D70
843	QL140N, QL140N-MH, QL200N4, QL200N4-MH H80 × W520 × D80
846	QL140N, QL140N-MH and below H170 × W500 × D100
847	QL280N, QL280N-MH and below H170 × W740 × D100



### Color Cap (P.45)

Part #	Color	Applicable Model
879	Red	QL2N, QL5N
880	Blue	QL10N, QL15N,
881	Green	QL25N5-1/4,
882	Black	QL25N5



### QL Protective Head Cover (P.45)

Part #	Applicable model
870	QL2N(-MH) - 15N(-MH)
871	QL25N5, QL25N-MH
872	QL50N(-MH)
873	QL100N4(-MH)
874	QL140N(-MH)
875	QL200N4(-MH)
877	QL280N(-MH)
878	QSP420N

# QL-MH

Ratchet Head Type  
Adjustable Torque  
Wrench with Metal  
Handle

Assembly Adjustable Ratchet Head Graduation

RoHS

- Knurled metal handle version of QL
- Ideal for oily working conditions

Direction



QL100N4-MH

QL5N-MH

S.I. Model	Torque Range [N·m]		Metric Model	Torque Range [kgf·cm/kgf·m]		American Model	Torque Range [lbf·in/lbf·ft]		Overall Length [mm]	Square Drive [mm]	Weight [kg]
	Min.-Max.	Grad.		Min.-Max.	Grad.		Min.-Max.	Grad.			
QL	N·m	N·m		kgf·cm	kgf·m		lbf·in	lbf·ft			
QL2N	0.4-2	0.02	20QL	4-20	0.2	QL15I-2A	3-15	0.1	194		0.27
QL5N	1-5	0.05	50QL	10-50	0.5	QL30I-2A	6-30	0.2		6.35	0.29
QL10N	2-10		100QL	20-100		QL50I-2A	10-50				
QL15N	3-15	0.1	150QL	30-150	1	QL100I-2A	20-100	0.5	219		
QL25N5-1/4			225QL5-1/4			QL200I-2A					
QL25N5	5-25	0.2	225QL5	50-250	2.5	QL200I-3A	50-200	2.5	237		0.33
QL50N	10-50	0.5	450QL3	100-500	5	QL400I-3A	100-400	5	260		0.45
-	-	-	-	-	-	QL750I-3A	150-750	10		9.53	
QL100N4-3/8	20-100		900QL4-3/8	200-1000		QL75F-3A	15-75	1	335		0.69
QL100N4	20-100	1	900QL4	200-1000	10	-	-	-			
QL140N	30-140		1400QL3	300-1400		QL100F-4A	30-100	1	400		0.88
QL200N4	40-200		1800QL4	400-2000	20	QL150F-4A	30-150		490	12.7	1.4
				kgf·m	kgf·m						
QL280N-1/2	40-280	2	2800QL3-1/2	4-28		QL200F-4A	30-210	2	695		2.0
QL280N			2800QL3			-	-				
QL420N	60-420		4200QL2	6-42	0.2	QL300F-6A	60-300		995		3.4
QLE2	N·m	N·m		kgf·m	kgf·m		lbf·ft	lbf·ft			19.05
QLE550N2	100-550		5500QLE2	10-55		QLE400F-6A	100-400		1169		4.3
QLE750N2	150-750	5	7500QLE2	15-75	0.5	QLE600F-6A	150-600	5	1342		5.6
QLE1000N2	200-1000		10000QLE2	20-100		QLE700F-8A	200-700		1515		7.7
QLE1400N2	300-1400		14000QLE2	30-140		QLE1000F-8A	300-1000		1787	25.4	11.1
QLE2100N2	500-2100	10	21000QLE2	50-210	1	QLE1500F-8A	500-1500	10	1895		14.6
QLE2800N2	800-2800	20	28000QLE2	80-280	2	QLE2000F-12A	600-2000	20	2405	38.1	23.7

- Note
1. QL2N-QL25N5 are yellow/black resin grips. QL50N-QL280N are black resin grips.
  2. QL420N and QLE550N2-QLE2800N2 are knurled handles.
  3. Use a through-hole socket for square drive over 25.4mm.
  4. QLE2 models with built-in Adjusting Handle

# QLLS

RoHS

- QL style with Limit Switch output
- Wired Error-Proofing, Pokayoke, system for assembly processes



QLLS100N4

## POKA Patrol, Count Checker CNA-4mk3

Refer to page 27.



\* Sold separately

S.I. Model	Metric Model
QLMS2N-MH	20QLMS-MH
QLMS5N-MH	50QLMS-MH
QLMS10N-MH	100QLMS-MH
QLMS10N	100QLMS
QLMS15N	150QLMS
QLMS15N-MH	150QLMS-MH
QLLS25N5	225QL5LS
QLLS50N	450QL3LS
QLLS100N4	900QL4LS
QLLS140N	1400QL3LS
QLLS200N4	1800QL4LS
QLLS280N	2800QL3LS
QLLS420N	4200QL2LS

# QL-MH

Ratchet Head Type  
Adjustable Torque  
Wrench with Metal  
Handle

Assembly Adjustable Ratchet Head Graduation

RoHS

- Knurled metal handle version of QL
- Ideal for oily working conditions

Direction



QL100N4-MH

QL5N-MH

S.I. Model	Torque Range [N·m]		Metric Model	Torque Range [kgf·cm/kgf·m]		American Model	Torque Range [lbf·in]		Overall Length [mm]	Square Drive [mm]	Weight [kg]
	Min.-Max.	Grad.		Min.-Max.	Grad.		Min.-Max.	Grad.			
QL2N-MH	0.4-2.0	0.02	20QL-MH	4-20	0.2	QL15I-2A-MH	3-15	0.1	160		0.16
QL5N-MH	1-5	0.05	50QL-MH	10-50	0.5	QL30I-2A-MH	6-30	0.2		6.35	
QL10N-MH	2-10		100QL-MH	20-100		QL50I-2A-MH	10-50	0.5			0.19
QL15N-MH	3-15	0.1	150QL-MH	30-150	1	QL100I-2A-MH	20-100	1	195		
QL25N-MH	5-25	0.25	225QL-MH	50-250	2.5	-	-	-	230		0.25
QL50N-MH	10-50	0.5	450QL-MH	100-500	5	-	-	-	260	9.53	0.45
QL100N4-MH	20-100		900QL4-MH	200-1000		-	-	-	335		0.69
QL140N-MH	30-140	1	1400QL-MH	300-1400	10	-	-	-	400	12.7	0.88
QL200N4-MH	40-200		1800QL4-MH	400-2000	20	-	-	-	490		1.4
				kgf·m	kgf·m						
QL280N-MH	40-280	2	2800QL-MH	4-28	0.2	-	-	-	695	19.05	1.9



# CL/CLE2

Interchangeable Head Type Adjustable Torque Wrench

Assembly Adjustable Interchangeable Graduation

RoHS

- Interchangeable Head can be easily exchanged.
- Torque value easily set with external scale and knob

Direction



## Interchangeable Head



Accuracy ±3%

Head Size	S.I. Model	Torque Range [N·m]		Metric Model	Torque Range [kgf·cm/kgf·m]		American Model	Torque Range [lbf·in/lbf·ft]		Overall Length [mm]	Weight [kg]	
		Min.-Max.	Grad.		Min.-Max.	Grad.		Min.-Max.	Grad.			
8D	CL	N·m	N·m		kgf·cm	kgf·cm		lbf·in	lbf·in	174	0.24	
	CL2N×8D	0.4-2	0.02	20CL	4-20	0.2	CL15I×8D	3-15	0.1			
	CL5N×8D	1-5	0.05	50CL	10-50	0.5	CL30I×8D	6-30	0.2			
	CL10N×8D	2-10	0.1	100CL	20-100	1	CL50I×8D	10-50	0.5			
CL15N×8D	3-15	150CL		30-150	CL100I×8D		20-100					
10D	CL25N5×10D	5-25	0.2	225CL5	50-250	2.5	CL200I×10D	50-200	2.5	216	0.3	
12D	CL50N×12D	10-50	0.5	450CL3	100-500	5	450CL3-A	100-400	5	230	0.37	
	CL50N×15D			500CL3			500-450			500CL3-A		100-450
15D	CL100N×15D	20-100	1	900CL3	200-1000	10	900CL3-A	200-800	10	310	0.52	
	CL140N×15D			1400CL3			300-1400			1400CL3-A		30-100
19D	CL200N×19D	40-200	2	1800CL3	400-2000	20	1800CL3-A	30-150	2	455	1.2	
	CL280N×22D			2800CL3			4-28			2800CL3-A		30-200
22D	CL420N×22D	60-420	0.2	4200CL2	6-42	0.2	4200CL2-A	80-300	2	940	3.1	
	CLE2			N·m			N·m			kgf·m		kgf·m
27D	CLE550N2×27D	100-550	5	5500CLE2	10-55	0.5	CLE400F×27D	100-400	5	1148	3.9	
	CLE750N2×27D	150-750		7500CLE2	15-75		CLE550F×27D	150-550		1291		4.9
	CLE850N2×32D	200-850		8500CLE2	20-85		CLE600F×32D	150-600		1297		5.1
32D	CLE1200N2×32D	300-1200	1	12000CLE2	30-120	1	CLE900F×32D	200-900	1	1454	6.9	

- Note**
1. Overall length does not include interchangeable head. Interchangeable heads are optional.
  2. PH type interchangeable head/p.44 is not applicable.
  3. CL2N - CL25N5 are yellow/black resin grips. CL50N - CL280N are black resin grips.
  4. CL420N and CLE550N2-CLE1200N2 are knurled handles.
  5. CLE2 models with built-in Adjusting Handle

## CL/CL-MH Optional Accessories



842



846

## Carrying Case (P.45)

Part #	Applicable Model Dimension [mm]
842	CL50N×12D/15D, CL50N×12D/15D-MH, CL100N×15D-MH H60 × W400 × D70
843	CL140N×15D-MH, CL200N×19D-MH H60 × W520 × D80
846	CL200N×19D, CL200N×19D and below H170 × W500 × D100
847	CL280N×22D, CL280N×22D-MH and below H170 × W740 × D100



## Color Cap

Part #	Color	Applicable Model
879	Red	CL2N×8D, CL5N×8D CL10N×8D, CL15N×8D CL25N5×10D
880	Blue	
881	Green	
882	Black	

# CLLS RoHS

- CL style with Limit Switch output
- Wired Error-Proofing, Pokayoke, system for assembly processes

S.I. Model	Metric Model
CLMS2N×8D-MH	20CLMS-MH
CLMS5N×8D-MH	50CLMS-MH
CLMS10N×8D-MH	100CLMS-MH
CLMS10N×8D	100CLMS
CLMS15N×8D	150CLMS
CLMS15N×8D-MH	150CLMS-MH
CLLS25N5×10D	225CL5LS
CLLS50N×12D	450CL3LS
CLLS100N×15D	900CL3LS
CLLS140N×15D	1400CL3LS
CLLS200N×19D	1800CL3LS
CLLS280N×22D	2800CL3LS
CLLS420N×22D	4200CL2LS

## POKA Patrol, Count Checker CNA-4mk3

Refer to page 27.



\* Sold separately

# CL-MH

Interchangeable Head Type Adjustable Torque Wrench with Metal Handle

Direction



CL100N×15D-MH



CL5N×8D-MH

Assembly Adjustable Interchangeable Graduation

RoHS

- Knurled metal handle version of CL
- Ideal for oily working conditions

Head Size	S.I. Model	Torque Range [N·m]		Metric Model	Torque Range [kgf·cm/kgf·m]		American Model	Torque Range [lbf·in]		Overall Length [mm]	Weight [kg]
		Min.-Max.	Grad.		Min.-Max.	Grad.		Min.-Max.	Grad.		
8D	CL	N·m	N·m		kgf·cm	kgf·cm		lbf·in	lbf·in	140	0.13
	CL2N×8D-MH	0.4-2	0.02	20CL-MH	4-20	0.2	CL15I×8D-MH	3-15	0.1		
	CL5N×8D-MH	1-5	0.05	50CL-MH	10-50	0.5	CL30I×8D-MH	6-30	0.2		
	CL10N×8D-MH	2-10	0.1	100CL-MH	20-100	1	CL50I×8D-MH	10-50	0.5		
CL15N×8D-MH	3-15	150CL-MH		30-150	CL100I×8D-MH		20-100				
10D	CL25N×10D-MH	5-25	0.25	225CL-MH	50-250	2.5	-	-	-	200	0.22
12D	CL50N×12D-MH	10-50	0.5	450CL-MH	100-500	5	-	-	-	230	0.37
	CL50N×15D-MH			500CL-MH			-	-	-	235	
15D	CL100N×15D-MH	20-100	1	900CL-MH	200-1000	10	-	-	-	310	0.52
	CL140N×15D-MH			1400CL-MH			300-1400	-	-	-	
19D	CL200N×19D-MH	40-200	2	1800CL-MH	400-2000	20	-	-	-	455	1.2
	CL280N×22D-MH			2800CL-MH			4-28	kgf·m	kgf·m	-	

- Note**
1. Overall length does not include interchangeable head.
  2. PH type interchangeable head/p.44 is not applicable.
  3. Interchangeable heads are optional.

Torque Wrench for Assembly

# DQL/DQLE2

**Direction** Dual Square Drives  
Type Adjustable Torque  
Wrench



Assembly Adjustable Ratchet Head Graduation Bi-Directional

RoHS

- For bi-directional tightening
- Ideal for tightening large vehicle tires



DQL200N4



DQLE750N2

## ■ DQL200N4 Optional Accessories

Carrying Case (P.45)

Part #	Applicable Model Dimension [mm]	Weight [kg]
843	DQL200N4 H60 × W520 × D80	0.36
847	DQL280N and below H170 × W740 × D100	1.0

## ■ Protective Head Cover



875

Part #	Applicable Model
875	DQL200N4

S.I. Model	Torque Range [N·m]		Metric Model	Torque Range [kgf·cm/kgf·m]		American Model	Torque Range [lbf·ft]		Overall Length [mm]	Square Drive [mm]	Weight [kg]
	Min.-Max.	Grad.		Min.-Max.	Grad.		Min.-Max.	Grad.			
DQL200N4	40-200	2	1800DQL4	400-2000	20	1800DQL4-A	30-150		490	12.7	1.4
DQL280N	40-280	2	2800DQL3	4-28	0.2	2800DQL3-A	30-200		695		2.0
DQLE2	N·m	N·m		kgf·m	kgf·m		lbf·ft	lbf·ft	19.0		
DQLE550N2	100-550		5500DQLE2	10-55		DQLE400F-6A	100-400		1189		4.4
DQLE750N2	150-750	5	7500DQLE2	15-75	0.5	DQLE600F-6A	150-600	5	1342		5.7
DQLE1000N2	200-1000		10000DQLE2	20-100		DQLE700F-8A	200-700		1515	25.4	7.9

- Note
1. DQL200N4 and DQL280N have resin grips.
  2. For the model having 25.4mm square drive, use a through-hole socket.
  3. DQLE550N2-DQLE1000N2 have knurled handles.
  4. DQLE2 with built-in Adjusting Handle

# TW2

Adjustable Torque Wrench with Multiplier

**Direction**



Assembly Adjustable Ratchet Head Graduation Bi-Directional

RoHS

- Easy bolt tightening for large vehicle tires



TW750N2

Model	Torque Range [N·m]		Square Drive [mm]	Weight [kg]	
	Min.-Max.	Grad.		Body	Torque Wrench
TW750N2	350-750		25.4		1.5
TW1000N2	400-1000	5	25.4	20	2.0

- Note
1. TW2 is a set of dedicated torque wrench and stand. Standard torque wrench cannot be used.
  2. Use through hole type socket for square drive 25.4mm.
  3. Socket, pin, and O-ring are sold separately.
  4. Applicable height of nut is between 255 and 790mm

### Usage Example



# MTQL

Torque Wrench for Motorsports

**Direction**



Assembly Adjustable Ratchet Head Graduation

RoHS

- Wide capacity adjustable style
- Ideal for motorcycle & motorbike maintenance



MTQL70N

S.I. Model	Torque Range [N·m]		Metric Model	Torque Range [kgf·m]		Overall Length [mm]	Square Drive [mm]	Weight [kg]
	Min.-Max.	Grad.		Min.-Max.	Grad.			
MTQL40N	5-40	0.5	400MTQL	0.5-4	0.05	250	9.5	0.45
MTQL70N	10-70		700MTQL	1-7	0.1	285		0.47
MTQL140N	20-140	1	1400MTQL	2-14		400	12.7	0.77

Standard Accessories Carrying case

## ■ MTQL Optional Accessories



842

846

## Carrying Case (P.45)

Part #	Applicable Model Dimension [mm]	Weight [kg]
842	MTQL40N, MTQL70N H80 × W400 × D70	0.25
843	MTQL140N H60 × W520 × D80	0.36
846	MTQL140N and below H170 × W500 × D100	1.0



# TiQL/TiQLE

**Direction**

Titanium Type Adjustable Torque Wrench



TiQL180N



TIEQLE750N

## TiEQLE Optional Accessories



Adjusting Tool for TIEQLE (P.45)

Part #	Applicable Model
301	TIEQLE750N, 1400N

 Assembly Pre-Lock Ratchet Head Graduation Titanium Material **RoHS**

- 50% lighter than standard wrenches
- Ideal for working overhead

Accuracy ±3%

S.I. Model	Torque Range [N·m]		Metric Model	Torque Range [kgf·cm/kgf·m]		Overall Length [mm]	Square Drive [mm]	Weight [kg]
	Min.-Max.	Grad.		Min.-Max.	Grad.			
TiQL								
TiQL180N	40-180	2	1800TiQL	kgf·cm	kgf·cm	494	12.7	0.9
TiLQL180N			1800TiLQL	40-1800	20	594		1.0
TIEQL360N	80-360		3600TIEQL	kgf·m	kgf·m	987	19.0	2.4
TiQLE	N·m	N·m		kgf·m	kgf·m			
TIEQLE750N	100-750	5	7500TIEQLE	10-75	0.5	1365		4.5
TIEQLE1400N	200-1400	10	14000TIEQLE	20-140	1	1794	25.4	7.5

**Note** For the model having 25.4mm square drive, use a through-hole socket.  
**Standard Accessories** 1. Hex key and Color bands for TiQL180N, TiLQL180N and TIEQL360N  
 2. Adjusting tool for TIEQLE750N, TIEQLE1400N

# TiQLLS **RoHS**

- TiQL style with Limit Switch output
- Wired Error-Proofing, Pokayoke, system for assembly processes

S.I. Model	Metric Model
TiQLLS180N	1800TiQLLS
TiLQLLS180N	1800TiLQLLS
TIEQLLS360N	3600TIEQLLS

POKA Patrol, Count Checker CNA-4mk3

Refer to page 27.



\* Sold separately

# PHL/PHLE2

**Direction**

Pipe-Wrench Head Type Adjustable Torque Wrench



PHL140N



PHLE1300N2

 Assembly Adjustable Graduation Pipe-Wrench Head **RoHS**

- Ideal for use with pipes and plumbing applications

Accuracy ±5%

S.I. Model	Torque Range [N·m]		Metric Model	Torque Range [kgf·cm/kgf·m]		American Model	Torque Range [lbf·in/lbf·ft]		Grippable Pipe Dia. [mm]	Overall Length [mm]	Weight [kg]
	Min.-Max.	Grad.		Min.-Max.	Grad.		Min.-Max.	Grad.			
PHL											
PHL50N	10-50	0.5	500PHL3	kgf·cm	kgf·cm	450PHL3-A	lbf·in	lbf·in		316	1.46
				100-500	5		5	5			
							lbf·ft	lbf·ft			
PHL100N	20-100	1	900PHL3	200-1000	10	900PHL3-A	15-75		13-38	472	1.61
PHL140N	30-140		1400PHL3	400-1400		1400PHL3-A	30-100	1		530	1.76
PHL200N	40-200	2	1800PHL3	400-1800	20	1800PHL3-A	30-150			620	2.3
					kgf·m	kgf·m					
PHL280N	40-280	3	2800PHL3	4-28	0.2	2800PHL3-A	30-200	2		833	2.92
PHL420N	60-420		4200PHL	6-42		4200PHL-A	60-300			1122	4.83
PHLE2	N·m	N·m		kgf·m	kgf·m		lbf·ft	lbf·ft	26-52		
PHLE850N2	200-850	5	8500PHLE2	20-85	0.5	PHLE800F	150-600			1664	8.2
PHLE1300N2	300-1300		1300PHLE2	30-130		PHLE900F	200-900	5		1831	10

**Note** 1. PHLE2 Models have extension bar handle.  
 2. PHL420N, PHLE850N2, and PHLE1300N2 have knurled handles.  
 3. PHLE2 with built-in Adjusting Handle

# QRSP Open Ring Head Type Preset Torque Wrench

**Direction**


QRSP38N×17

 Assembly Preset Open Ratchet Head **RoHS**

- Ring head opens to allow fitting on tubes or pipes.

Accuracy ±3%

Model	Torque Range		Overall Length [mm]	Weight [kg]
	[N·m] Min.-Max.	[kgf·cm] Min.-Max.		
QRSP38N×17			300	
QRSP38N×19	10-45	100-450	305	0.4
QRSP38N×21				
QRSP38N×24			310	0.43

**Note** A torque wrench tester is necessary for torque setting. Specify required set torque when you order.  
 Ex. QRSP38N×17 × 25N·m

## QRSP Optional Accessories

Thrusting Tool for QRSP (P.45)

Part #	Tool #	Applicable Model
312	A-3	QRSP38N

# QRSPLS **RoHS**

- QRSP style with Limit Switch output
- Wired Error-Proofing, Pokayoke, system for assembly processes

Model	Weight [kg]
QRSPLS38N×17	0.4
QRSPLS38N×19	
QRSPLS38N×21	
QRSPLS38N×24	

POKA Patrol, Count Checker CNA-4mk3

Refer to page 27.



\* Sold separately

# PQL

Ratchet Head Type  
Pre-Lock Torque  
Wrench

Direction



## ■ PQL Optional Accessories



842



846

Carrying Case (P.45)

Part #	Applicable Model Dimension [mm]	Weight [kg]
842	50N-100N4 H60 × W400 × D70	0.25
843	140N-200N4 H60 × W520 × D80	0.36
846	200N and below H170 × W500 × D100	1.0
847	280N and below H170 × W740 × D100	0.36

PQL Protective Head Cover (P.45)

Part #	Applicable model
870	PQL10N, PQL15N
871	PQL25N
872	PQL50N
873	PQL100N4
874	PQL140N
875	PQL200N4
877	PQL280N
878	PQL420N

Assembly Pre-Lock Ratchet Head Graduation

RoHS

- External scale, set by a hex key



PQL100N4

Accuracy ±3%

S.I. Model	Torque Range [N·m]		Metric Model	Torque Range [kgf·cm/kgf·m]		American Model	Torque Range [lbf·in/lbf·ft]		Overall Length [mm]	Square Drive [mm]	Weight [kg]
	Min.-Max.	Grad.		Min.-Max.	Grad.		Min.-Max.	Grad.			
PQL10N	2-10	0.1	100PQL	20-100	1	PQL50L-2A	10-50	0.5	190	6.35	0.19
PQL15N	3-15		150PQL	30-150		PQL100L-2A	20-100	1			
PQL25N	5-25	0.25	225PQL	50-250	2.5	225PQL-A	50-200	2.5	215	9.53	0.25
PQL50N	10-50	0.5	450PQL	100-500	5	450PQL-A	100-400	5	260		0.40
							lbf·in	lbf·ft			
PQL100N4	20-100	1	900PQL4	200-1000	10	900PQL4-A	15-75		320		0.65
PQL140N	30-140		1400PQL	300-1400		1400PQL-A	30-100	1	385	12.7	0.75
PQL200N4	40-200	2	1800PQL4	400-2000	20	1800PQL4-A	30-150	2	470		1.40
PQL280N	40-280	0.2	2800PQL	4-28	0.2	-	-	-	670	19.05	2.0
PQL420N	60-420		4200PQL	6-42		-	-	-	975		3.4

Standard Accessories Hex key for torque adjustment

# PQLLS

RoHS

- PQL style with Limit Switch output
- Wired Error-Proofing, Pokayoke, system for assembly processes

POKA Patrol, Count Checker  
CNA-4mk3

Refer to page 27.



\* Sold separately

S.I. Model	Metric Model
PQLLS25N	225PQLLS
PQLLS50N	450PQLLS
PQLLS100N4	900PQL4LS
PQLLS140N	1400PQLLS
PQLLS200N4	1800PQL4LS
PQLLS280N	2800PQLLS
PQLLS420N	4200PQLLS

# PQLZ

Pre-Lock Adjustable  
Insulated Torque  
Wrench

Direction



PQLZ100N4

Assembly Pre-Lock Ratchet Head Graduation Vinyl Coating Insulated

- Insulated casing prevents electrical shocks.
- Specialized version of PQL

S.I. Model	Torque Range [N·m]		Metric Model	Torque Range [kgf·cm]		Overall Length [mm]	Square Drive [mm]	Weight [kg]
	Min.-Max.	Grad.		Min.-Max.	Grad.			
PQLZ25N	5-25	0.25	225PQLZ	50-225	2.5	227	9.5	0.28
PQLZ100N4	20-100	1	900PQLZ4	200-900	10	340	12.7	0.80

Standard Accessories Hex key for torque adjustment

# QSPZ

Preset Insulated  
Torque Wrench

Direction



QSPZ25N

Assembly Preset Vinyl Coating Insulated

- Insulated design suited for use in electric shock hazard conditions
- Ideal for electric car assembly, connection of battery terminal wiring work etc.

Model	Torque Range			Overall Length [mm]	Square Drive [mm]	Weight [kg]
	[N·m]	[kgf·cm]	[lbf·in]			
QSPZ25N	5-25	50-250	50-200	227	9.5	0.28
QSPZ100N4	20-100	200-1000	100-750	334	12.7	0.8

Note 1. A torque wrench tester is necessary for torque adjustment. Specify required set torque when you order. Ex. QSPZ100N4 × 80N·m  
2. Adjusting tools for QSPZ are sold separately.  
3. Sockets are sold separately. Refer to page 40.  
4. Sockets are not insulation coating.

# MT70N

Moto Tork/Pre-Lock  
Adjustable Specialty  
Torque Wrench

Direction



MT70N

Assembly Pre-Lock Interchangeable Graduation

RoHS

- Converts basic hand tools into torque wrenches
- Ideal for motorcycle maintenance

S.I. Model	Torque Range [N·m]		Metric Model	Torque Range [kgf·m]		Overall Length [mm]	Weight [kg]
	Min.-Max.	Grad.		Min.-Max.	Grad.		
MT70N	10-70	0.2	MT-7	1.0-7.0	0.02	238	0.65

Note 1. Ring head wrench shown in the photo is not included.  
2. Max. clamp width for interchangeable tool is approx. 21mm.  
3. Min. interchangeable hex wrench key size is 5mm.

Standard Accessories 1. Carrying case  
2. Hex key wrench for torque adjustment

Torque Wrench for Assembly



# PCL

Interchangeable Head Type Pre-Lock Torque Wrench

Direction



Assembly Pre-Lock Interchangeable Graduation

RoHS

- Interchangeable head version of PQL
- External scale, set by a hex key



PCL100N×15D

Accuracy ±3%

Head Size	S.I. Model	Torque Range [N·m]		Metric Model	Torque Range [kgf·cm]		American Model	Torque Range [lbf·in/lbf·ft]		Overall Length [mm]	Weight [kg]
		Min.-Max.	Grad.		Min.-Max.	Grad.		Min.-Max.	Grad.		
8D	PCL10N×8D	2-10	0.1	100PCL	20-100	1	PCL50I×8D	lbf-in	lbf-in	170	0.16
	PCL15N×8D	3-15		150PCL	30-150		PCL100I×8D	10-50	0.5		
10D	PCL25N×10D	5-25	0.25	225PCL	50-250	2.5	225PCL-A	50-200	2.5	195	0.22
	PCL50N×12D	10-50	0.5	450PCL	100-500	5	450PCL-A	100-400	5	220	0.32
PCL50N×15D	500PCL			100-450				225			
15D	PCL100N×15D	20-100	1	900PCL	200-1000	10	900PCL-A	15-75	lbf-ft	295	0.48
	PCL140N×15D	30-140		1400PCL	300-1400		1400PCL-A	30-100	1	355	0.63
19D	PCL200N×19D	40-200	2	1800PCL	400-2000	20	1800PCL-A	30-150	2	435	1.3

- Note
1. Overall length does not include interchangeable head.
  2. PH type interchangeable head/p.44 is not applicable.
  3. Interchangeable heads are optional.

Standard Accessories Hex key for torque adjustment

## Interchangeable Head



## PCL Optional Accessories



842

846

Carrying Case (P.45)

Part #	Applicable Model Dimension [mm]	Weight [kg]
842	PCL50N×12D-100N×15D H60 × W400 × D70	0.25
843	PCL140N×15D-200N×19D H80 × W520 × D80	0.36
846	PCL200N and below H170 × W500 × D100	1.0

# PCLLS

RoHS

- PCL style with Limit Switch output
- Wired Error-Proofing, Pokayoke, system for assembly processes

S.I. Model	Metric Model
PCLLS25N×10D	225PCLLS
PCLLS50N×12D	450PCLLS
PCLLS100N×15D	500PCLLS
PCLLS140N×15D	1400PCLLS
PCLLS200N×19D	1800PCLLS

POKA Patrol, Count Checker  
CNA-4mk3

Refer to page 27.



\* Sold separately

# SCL

European Style Interchangeable Head Type Adjustable Torque Wrench

Direction



SCL50N-9×12

Assembly Adjustable Interchangeable Graduation

RoHS

- DIN interchangeable head connection
- Same function of CL

S.I. Model	Torque Range [N·m]		Head Size [mm]	Overall Length [mm]	Weight [kg]
	Min.-Max.	Grad.			
SCL25N5-9×12	5-25	0.2	9×12	226	0.3
SCL50N-9×12	10-50	0.5		239	0.37
SCL100N-9×12	20-100	1		313	0.52
SCL200N-14×18	40-200	2	14×18	464	1.2

- Note
1. Overall length does not include interchangeable head.
  2. Applicable to European style interchangeable head only. Tohnichi's interchangeable heads are not available for SCL models.
  3. SCL25N5-9 × 12N is a yellow/black resin grip.

# SCSP

European Style Interchangeable Head Type Preset Torque Wrench

Direction



SCSP50N-9×12

Assembly Interchangeable Preset

RoHS

- DIN interchangeable head connection
- Same function of CSP

Model	Torque Range		Head Size [mm]	Overall Length [mm]	Weight [kg]
	[N·m]				
	Min.-Max.	[kgf·cm] Min.-Max.			
SCSP25N-9×12	5-25	50-250	9×12	204	0.15
SCSP50N-9×12	10-50	100-500		230	0.3
SCSP100N-9×12	20-100	200-1000		302	0.45
SCSP200N-14×18	40-200	400-2000	14×18	434	1

- Note
1. Overall length does not include interchangeable head.
  2. Applicable to European style interchangeable head only. Tohnichi's interchangeable heads are not available for SCL models.

Torque Wrench for Assembly

## QSP Ratchet Head Type Preset Torque Wrench

Direction



Assembly **Preset** Ratchet Head

RoHS

- No external scale, torque set by a torque wrench tester
- Ideal for mass production application



QSP100N4

### QSP3/QSP-MH Optional Accessories



Adjusting Tool (P.45)

Part #	Applicable Model
931	QSP1.5N4-12N4, QSP25N3/-MH
930	QSP50N3/-MH ~ 280N3/-MH QSP100N4/-MH, 200N4/-MH
314	QSP420N

### QSP Protective Head Cover



873

QSP Protective Head Cover (P.45)

Part #	Applicable model
870	QSP1.5N4 - 12N4
871	QSP25N3(-MH)
872	QSP50N3(MH)
873	QSP100N4(-MH)
874	QSP140N3(-MH)
875	QSP200N4
877	QSP280N3
878	QSP420N

Model	Torque Range			Overall Length [mm]	Square Drive [mm]	Weight [kg]
	[N·m]	[kgf·cm/kgf·m]	[lbf·in]			
	Min.-Max.	Min.-Max.	Min.-Max.			
QSP1.5N4	0.3-1.5	3-15	2.7-13.2	165	6.35	0.16
QSP3N4	0.6-3	6-30	5.3-26.5			
QSP6N4	1-6	10-60	8.9-53.1	175		0.19
QSP12N4	2-12	20-120	17.7-106.2			
QSP25N3-1/4	5-25	50-250	44.3-221.2	215		0.25
QSP25N3						
QSP50N3	10-50	100-500	88.5-442.5	240	9.53	0.4
QSP100N4-3/8	20-100	200-1000	177-885			
QSP100N4	30-140	300-1400	265.5-1239.1	380		0.7
QSP140N3						
QSP200N4	40-200	400-2000	354-1770.1	465	12.7	1.2
QSP280N3-1/2	40-280	4-28	354-2478.2			
QSP280N3						
QSP420N	60-420	6-42	531.1-3717.3	970	19.05	3.1

- Note
1. Adjusting tools are sold separately.
  2. A torque wrench tester is necessary for torque setting. Specify required set torque when you order.  
Ex. QSP100N4 × 80N·m
  3. QSP200N4-QSP420N have knurled handles.

## QSPLS • QSP style with Limit Switch output • Wired Error-Proofing, Pokayoke, system for assembly processes

RoHS

Refer to page 28.

## QSP-MH Ratchet Head Type Preset Torque Wrench with Metal Handle

Direction



Assembly **Preset** Ratchet Head

RoHS

- Knurled metal handle version of QSP
- Ideal for oily working conditions



QSP100N4-MH

Model	Torque Range			Overall Length [mm]	Square Drive [mm]	Weight [kg]
	[N·m]	[kgf·cm]	[lbf·in]			
	Min.-Max.	Min.-Max.	Min.-Max.			
QSP25N3-MH	5-25	50-250	44.3-221.2	215	9.5	0.25
QSP50N3-MH	10-50	100-500	88.5-442.5	240		0.4
QSP100N4-MH	20-100	200-1000	177-885	315	12.7	0.65
QSP140N3-MH	30-140	300-1400	265.5-1239.1	380		0.7

- Note
1. A torque wrench tester is necessary for torque adjustment. Specify required set torque when you order.  
Ex. QSP100N4-MH × 80N·m
  2. Adjusting tools for QSP-MH are sold separately.
  3. Sockets are sold separately. Refer to page 40.

## BQSP Bi-Directional Type Preset Torque Wrench

Direction



Assembly **Preset** Ratchet Head **Bi-Directional**

RoHS

- Click for both CW & CCW applications
- Same function of QSP



BQSP70N

### BQSP Optional Accessories



Adjusting Tool (P.45)

Part #	Applicable Model
931	BQSP10N-20N
930	BQSP40-300N
314	BQSP400N

Model	Torque Range			Overall Length [mm]	Square Drive [mm]	Weight [kg]	Adjusting Tool Part #
	[N·m]	[kgf·cm/kgf·m]	[lbf·in]				
	Min.-Max.	Min.-Max.	Min.-Max.				
BQSP10N	5-10	50-100	44.3-88.5	213.5	6.35	0.2	931
BQSP20N	10-20	100-200	88.5-177				
BQSP40N	20-40	200-400	177-354	240	9.53	0.4	
BQSP70N	35-70	350-700	309.8-619.5				
BQSP120N	60-120	600-1200	531-1062	380	12.7	0.73	930
BQSP220N	110-220	1100-2200	973.5-1947				
BQSP300N	150-300	15-30	1327.5-2655	665	19.05	2.4	
BQSP400N	200-420	20-42	1770-3717				

- Note
1. BQSP10N-300N have resin grips.
  2. BQSP400N has a knurled handle.
  3. Adjusting tool is sold separately.
  4. Sockets are sold separately. Refer to page 40.



# CSP

Interchangeable Head  
Type Preset Torque  
Wrench

Direction



## Interchangeable Head



### CSP Optional Accessories



Adjusting Tool (P.45)

Part #	Applicable Model
931	CSP1.5N4-12N4, 25N3-MH
930	CSP50N3-MH ~ 280N3-MH
314	CSP420N

Assembly **Preset** Interchangeable

RoHS

- Interchangeable head version of QSP
- No external scale, torque set by a torque wrench tester



CSP100N3x15D

Accuracy ±3%

Head Size	Model	Torque Range			Overall Length [mm]	Weight [kg]
		[N·m] Min.-Max.	[kgf·cm] Min.-Max.	[lbf·in] Min.-Max.		
8D	CSP1.5N4x8D	0.3-1.5	kgf·cm	3-15	130	0.2
	CSP3N4x8D	0.5-3	6-30	5.3-26.5	165	
	CSP6N4x8D	1-6	10-60	8.9-53.1		
10D	CSP12N4x8D	2-12	20-120	17.7-106.2	195	0.3
12D	CSP50N3x12D	10-50	100-500	88.5-442.5	215	
15D	CSP50N3x15D	20-100	200-1000	177-885	220	
19D	CSP140N3x15D	30-140	300-1400	265.5-1239.1	290	0.45
	CSP200N3x19D	40-200	400-2000	354-1770.1	350	
22D	CSP280N3x22D	40-280	kgf·m	4-28	430	1.0
	CSP420Nx22D	60-420	6-42	531.1-3717.3	625	
					920	

- Note
1. Overall length does not include interchangeable head.
  2. Adjusting tools are sold separately.
  3. Interchangeable heads are optional.
  4. A torque wrench tester is necessary for torque setting. Specify required set torque when you order.  
Ex. CSP100N3x15D x 80N·m
  5. CSP200N3x19D-CSP420Nx22D have knurled handles.

# CSPLS

RoHS

- CSP style with Limit Switch output
- Wired Error-Proofing, Pokayoke, system for assembly processes

POKA Patrol, Count Checker  
CNA-4mk3

Refer to page 27.



\* Sold separately

# CSP-MH

Interchangeable Head Type  
Preset Torque  
Wrench with  
Metal Handle

Direction



CSP100N3x15D-MH

Assembly **Interchangeable** Preset

RoHS

- Knurled metal handle version of CSP
- Ideal for oily working conditions

Model	Torque Range			Overall Length [mm]	Weight [kg]
	[N·m] Min.-Max.	[kgf·cm] Min.-Max.	[lbf·in] Min.-Max.		
CSP25N3x10D-MH	5-25	50-250	44.3-221.2	195	0.2
CSP50N3x12D-MH	10-50	100-500	88.5-442.5	215	0.3
CSP50N3x15D-MH				220	
CSP100N3x15D-MH	20-100	200-1000	177-885	290	0.45
CSP140N3x15D-MH	30-140	300-1400	265.5-1239.1	350	0.55

- Note
1. A torque wrench tester is necessary for torque adjustment. Specify required set torque when you order.  
Ex. CSP100N3x15D-MH x 80N·m
  2. Adjusting tools for CSP-MH are sold separately.
  3. Sockets are sold separately. Refer to page 40.

# BCSP

Bi-Directional  
Interchangeable Head  
Type Preset Torque  
Wrench

Direction



BCSP70Nx15D

Assembly **Preset** Interchangeable **Bi-Directional**

RoHS

- Click for both CW & CCW applications
- Same function of CSP

Head Size	Model	Torque Range			Overall Length [mm]	Effective Length [mm]	Weight [kg]	Adjusting Tool Part #
		[N·m] Min.-Max.	[kgf·cm] Min.-Max.	[lbf·in] Min.-Max.				
8D	BCSP10Nx8D	5-10	kgf·cm	44.3-88.5	189.5	176	931	
10D	BCSP20Nx10D	10-20	50-100	88.5-177	192.5	186		
12D	BCSP40Nx12D	20-40	200-400	177-354	214	208	0.23	
	BCSP70Nx12D				286	280		
15D	BCSP70Nx15D	35-70	350-700	309.8-619.5	290	291	930	
	BCSP120Nx15D	60-120	600-1200	531-1062	348.5	349.5		
19D	BCSP220Nx19D	110-220	1100-2200	973.5-1947	427	445	1.2	
22D	BCSP300Nx22D	150-300	kgf·m	1327.5-2655	625	660	2	
	BCSP400Nx22D	200-420	20-42	1770-3717	918	950		

- Note
1. Overall length does not include interchangeable head. Interchangeable heads are optional.
  2. BCSP10N-300N have resin grips.
  3. BCSP400N has a knurled handle.
  4. Adjusting tool is sold separately.
  5. Sockets are sold separately. Refer to page 40.

### BCSP Optional Accessories

Adjusting Tool (P.45)

Part #	Applicable Model
931	BCSP10N-20N
930	BCSP40N-300N
314	BCSP400N



# SP·SP2/-MH RSP2/-MH

Open End/  
Ring Head  
Type Preset  
Torque  
Wrench

Assembly

Preset

Open End Spanner

···SP·SP2/-MH

Ring Head

····RSP2/-MH

- Various sizes of open end or ring heads fixed on wrench
- Ideal for specific bolt size application

RoHS

RoHS

Direction



Torque Wrench for  
Assembly

Model (Body Size × Width)		Torque Range		Head Dimension O.W. × Thickness [mm]	Overall Length [mm]	Weight [kg]		
SP2	SP2-MH	[N·m] Min.-Max.	[kgf·cm] Min.-Max.					
SP2N2×5.5	-	0.4-2	4-20	17 × 5	168	0.15		
SP2N2×7	-			18 × 5	169			
SP2N2×8	-			19 × 5	171			
SP2N2×10	-			21 × 5	173			
SP2N2×12	-			23 × 5	175			
SP2N2×13	-			24 × 5	176			
SP2N2×17	-			27 × 5	180			
SP2N2×19	-			28 × 8	186			
SP8N2×7	-			18 × 5	169			
SP8N2×8	-			19 × 5	171			
SP8N2×9	-	20 × 5	172					
SP8N2×10	-	21 × 5	173					
SP8N2×12	-	1.5-8	15-80	23 × 5	175			
SP8N2×13	-			24 × 5	176			
SP8N2×19	-			28 × 8	180			
SP8N2×24	-			33 × 8	186			
SP8N2×27	-			36 × 8	189			
SP19N2×10	SP19N2×10-MH			3.5-19	35-190	27 × 6.5	202 (202)	0.21
SP19N2×11	SP19N2×11-MH					27 × 6.5	203 (204)	
SP19N2×12	SP19N2×12-MH					30 × 6.5	204 (204)	
SP19N2×13	SP19N2×13-MH					30 × 6.5	204 (205)	
SP19N2×14	SP19N2×14-MH					30 × 6.5	204 (205)	
SP19N2×17	SP19N2×17-MH	31 × 8	208 (208)					
SP19N2×19	SP19N2×19-MH	33 × 8	209 (210)					
SP19N2×21	SP19N2×21-MH	35 × 8	211 (212)					
SP19N2-1×10	SP19N2-1×10-MH	24 × 12	205 (205)					
SP19N2-2×10	SP19N2-2×10-MH	24 × 20	204 (204)					
SP19N2-3×10	SP19N2-3×10-MH	24 × 15	205 (205)					
SP38N2×8	SP38N2×8-MH	8-38	80-380	26 × 8	217 (217)	0.37		
SP38N2×9	SP38N2×9-MH			27 × 8	219 (218)			
SP38N2×10	SP38N2×10-MH			28 × 8	220 (220)			
SP38N2×11	SP38N2×11-MH			29 × 8	220 (220)			
SP38N2×12	SP38N2×12-MH			30 × 8	222 (222)			
SP38N2×13	SP38N2×13-MH			31 × 8	224 (224)			
SP38N2×14	SP38N2×14-MH			32 × 8	224 (224)			
SP38N2×16	SP38N2×16-MH			34 × 8	227 (227)			
SP38N2×17	SP38N2×17-MH			35 × 8	229 (229)			
SP38N2×19	SP38N2×19-MH			37 × 8	232 (232)			
SP38N2×22	SP38N2×22-MH	40 × 8	234 (234)					
SP38N2×24	SP38N2×24-MH	42 × 8	238 (237)					
SP38N2×27	SP38N2×27-MH	45 × 8	241 (241)					
SP38N2-1×10	SP38N2-1×10-MH	24 × 12	221 (221)					
SP38N2-2×10	SP38N2-2×10-MH	24 × 20	223 (223)					
SP38N2-3×10	SP38N2-3×10-MH	24 × 15	221 (221)					
SP67N2×14	SP67N2×14-MH	13-67	130-670	35 × 10	285 (284)	0.48		
SP67N2×16	SP67N2×16-MH			37 × 10	287 (286)			
SP67N2×17	SP67N2×17-MH			38 × 10	288 (287)			
SP67N2×18	SP67N2×18-MH			39 × 10	289 (287)			
SP67N2×19	SP67N2×19-MH			40 × 10	290 (289)			
SP67N2×21	SP67N2×21-MH			42 × 10	292 (291)			
SP67N2×22	SP67N2×22-MH			43 × 10	293 (292)			
SP67N2×24	SP67N2×24-MH			44 × 11	299 (298)			
SP67N2×27	SP67N2×27-MH			47 × 11	303 (301)			
SP67N2×29	SP67N2×29-MH			49 × 11	304 (303)			
SP67N2×30	SP67N2×30-MH	50 × 11	305 (304)					
SP67N2×32	SP67N2×32-MH	52 × 11	307 (306)					
SP67N2×33.3	SP67N2×33.3-MH	54 × 11	308 (307)					
SP120N2×14	SP120N2×14-MH	24-120	240-1200	42 × 10	360 (359)	0.75		
SP120N2×17	SP120N2×17-MH			45 × 10	362 (361)			
SP120N2×18	SP120N2×18-MH			46 × 10	364 (364)			
SP120N2×19	SP120N2×19-MH			47 × 10	365 (364)			
SP120N2×21	SP120N2×21-MH			50 × 10	368 (367)			
SP120N2×22	SP120N2×22-MH			51 × 11	369 (368)			
SP120N2×23	SP120N2×23-MH			51 × 11	369 (368)			
SP120N2×24	SP120N2×24-MH			53 × 12	370 (369)			
SP120N2×27	SP120N2×27-MH			55 × 14	373 (373)			
SP120N2×30	SP120N2×30-MH			50 × 10	368 (367)			
SP160N2×19	SP160N2×19-MH	30-160	300-1600	50 × 10	368 (367)	0.9		
SP160N2×21	SP160N2×21-MH			51 × 12	368 (367)			
SP160N2×22	SP160N2×22-MH			52 × 12	369 (369)			
SP160N2×24	SP160N2×24-MH			53 × 12	369 (369)			
SP160N2×26	SP160N2×26-MH			55 × 12	373 (373)			
SP160N2×27	SP160N2×27-MH			55 × 12	373 (373)			
SP160N2×41	SP160N2×41-MH			70 × 14	386 (386)			

Model (Body Size × Width)		Torque Range		Head Dimension O.W. × Thickness [mm]	Overall Length [mm]	Weight [kg]			
SP/SP2	SP2-MH	[N·m] Min.-Max.	[kgf·cm] Min.-Max.						
SP220N2×19	SP220N2×19-MH	65-310	650-3100	53×13	448 (447)	1.3			
SP220N2×22	SP220N2×22-MH			56×13	451 (450)				
SP220N2×24	SP220N2×24-MH			58×13	453 (452)				
SP220N2×27	SP220N2×27-MH			61×13	456 (455)				
SP220N2×29	SP220N2×29-MH			63×13	460 (460)				
SP220N2×30	SP220N2×30-MH			65×13	464 (464)				
SP220N2×32	SP220N2×32-MH			67×15	463 (463)				
SP220N2×34	SP220N2×34-MH			72×15	468 (467)				
SP220N2×36	SP220N2×36-MH			60×14	647 (646)				
SP310N2×22	SP310N2×22-MH			62×14	648 (647)				
SP310N2×24	SP310N2×24-MH	65×14	651 (650)						
SP310N2×27	SP310N2×27-MH	68×14	654 (653)						
SP310N2×30	SP310N2×30-MH	70×14	655 (654)						
SP310N2×32	SP310N2×32-MH	80×15	670 (670)						
SP310N2×41	SP310N2×41-MH	85×15	671 (671)						
SP310N2×46	SP310N2×46-MH	-	-	-	-	-			
SP420N×27	-	90-420	900-4200	78×18	840	3.3			
SP420N×30	-			81×19	995				
SP420N×32	-			83×19	1000				
SP420N×34	-			87×19	1005				
SP420N×35	-			97×19	1010				
SP420N×36	-			104×19	1010				
SP560N×30	-			-	-		-	-	-
SP560N×32	-			130-560	1300-5600		81×19	995	4
SP560N×36	-						87×19	1000	
SP560N×46	-						97×19	1005	
SP560N×55	-	-	-	104×19	1010	4.5			

Model (Body Size × Width)		Torque Range		Head Dimension O.W. × Thickness [mm]	Overall Length [mm]	Weight [kg]
RSP2	RSP2-MH	[N·m] Min.-Max.	[kgf·cm] Min.-Max.			
RSP8N2×8	-	2-9	20-90	15×6	200	0.15
RSP8N2×10	-			17.5×7	205	
RSP19N2×8	RSP19N2×8-MH	9-24.2	90-242	15×6	220 (220)	0.2
RSP19N2×10	RSP19N2×10-MH			17.5×7	221 (221)	
RSP19N2×13	RSP19N2×13-MH			22×7	223 (223)	
RSP38N2×10	RSP38N2×10-MH			17.5×7	244 (244)	
RSP38N2×12	RSP38N2×12-MH			20.5×8	247 (247)	
RSP38N2×13	RSP38N2×13-MH			21.5×8	246 (246)	
RSP38N2×14	RSP38N2×14-MH			23.5×9	247 (247)	
RSP38N2×16	RSP38N2×16-MH			26×9	248 (248)	
RSP38N2×17	RSP38N2×17-MH			27.5×9	248 (248)	
RSP67N2×14	RSP67N2×14-MH			14-73	140-730	
RSP67N2×16	RSP67N2×16-MH	27×10	313 (312)			
RSP67N2×17	RSP67N2×17-MH	29×12	314 (313)			
RSP67N2×18	RSP67N2×18-MH	29.5×12	315 (314)			
RSP67N2×19	RSP67N2×19-MH	30×12	315 (314)			
RSP120N2×17	RSP120N2×17-MH	29.4×12	393 (393)			
RSP120N2×18	RSP120N2×18-MH	30.6×12	394 (393)			
RSP120N2×19	RSP120N2×19-MH	31.8×13	394 (394)			
RSP120N2×21	RSP120N2×21-MH	34×13	396 (396)			
RSP120N2×22	RSP120N2×22-MH	35×13	396 (396)			
RSP160N2×19	RSP160N2×19-MH	30-160	320-1700	32.8×13	395 (394)	0.9
RSP160N2×21	RSP160N2×21-MH			34×13	396 (395)	
RSP160N2×22	RSP160N2×22-MH			35×13	396 (396)	
RSP160N2×24	RSP160N2×24-MH			38×15	398 (397)	
RSP220N2×22	RSP220N2×22-MH			38.4×13	480 (479)	
RSP220N2×24	RSP220N2×24-MH			40×13	481 (480)	
RSP220N2×27	RSP220N2×27-MH			45×13	483 (482)	
RSP310N2×24	RSP310N2×24-MH			41.8×15	678 (678)	
RSP310N2×27	RSP310N2×27-MH			45×15	680 (680)	
RSP310N2×30	RSP310N2×30-MH			50×15	682 (681)	

- Note
1. The value shown in ( ) in the "Overall Length" shows the length of SP2-MH models.
  2. Due to a variety of SP2/RSP2 models, specify required inner width, model name and set torque when you order.  
Ex. RSP38N2×10 × 16N·m
  3. Refer to page 45 for thrusting and adjusting tool.

### ■ SP·SP2·RSP2/-MH Optional Accessories

Thrusting Tool / Adjusting Tool (P.45)



## SP2-H Torque Wrench for Piping Work

Direction



SP38N2x19H

Assembly Preset Open End Spanner

RoHS

- Made with smaller outside width to work in narrow spaces, including hydraulic piping, where current open-end type is unable to access.
- Aligned with appropriate inner widths commonly used for hydraulic piping applications.

Model (Body Size × Width)	Torque Range		Minimum Piping Pitch (mm)	Head Dimension (O.W. × Thickness) (mm)	Overall Length (mm)	Weight (kg)	Adjusting Tool Part #
	[N·m]	[kgf·cm]					
SP2-H	Min.-Max.	Min.-Max.					
SP38N2x14H	8-25	80-250	26	26.3x8	218	0.37	930
SP38N2x19H	8-39	80-390	35	33.1x8	222		
SP67N2x27H	13-67	130-670	46	43.6x11	294	0.48	
SP120N2x32H-MH	24-120	240-1200	54	51.6x14	363	0.75	

- Note
1. Minimum piping pitch is required.
  2. A torque wrench tester is necessary for torque setting. Specify required set torque when you order.  
Ex. SP38N2x14H × 25N·m
  3. SP120N2x32H-MH is a knurled handle. Others are resin handles.

Adjusting Tool (P.45) \* Sold separately

Part #	Applicable Model
930	SP38N2-H, SP67N2-H, SP120N2x32H-MH

## SP2-N/-MH

Direction

Notched Head Type  
Preset Torque Wrench



SP19N2-1x10N

SP19N2-1x10N-MH

Assembly Preset Notched Head

RoHS

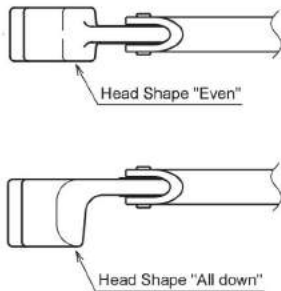
- Notch creates speed in tightening process.
- Ideal for brake lines

Model (Body Size × Width)		Torque Range		Head Dimension		Overall Length (mm)	Weight (kg)	Adjusting Tool Part #
		[N·m]	[kgf·cm]	O.W. × Thickness (mm)	Head Shape			
SP2-N	SP2-N-MH	Min.-Max.	Min.-Max.					
SP19N2-1x10N	SP19N2-1x10N-MH			24x12	Even	203	0.21	931
SP19N2-3x10N	SP19N2-3x10N-MH			24x15				
SP19N2-4x10N	SP19N2-4x10N-MH	3.5-19	35-190	24x10				
SP19N2-5x10N	SP19N2-5x10N-MH			24x15				
SP19N2-9x10N	SP19N2-9x10N-MH			24x10	All down			
SP38N2x14N	SP38N2x14N-MH	6-38	80-380	32x8	Even	222	0.37	930

- Note
1. A torque wrench tester is necessary for torque setting. Specify required set torque when you order.  
Ex. SP19N2-1x10N × 15N·m
  2. Adjusting tool for SP19N2-N/-MH is 931 and for SP38N2-N/-MH is 930.

## SPLS2-N/-MH

- SP-N style with Limit Switch output
- Wired Error-Proofing, Pokayoke, system for assembly processes



Head Shape "Even"

Head Shape "All down"

Model (Body Size × Width)		Torque Range		Head Dimension		Overall Length (mm)	Weight (kg)	Adjusting Tool Part #
		[N·m]	[kgf·cm]	O.W. × Thickness (mm)	Head Shape			
SPLS2-N	SPLS2-N-MH	Min.-Max.	Min.-Max.					
SPLS19N2-1x10N	SPLS19N2-1x10N-MH			24x12	Even	203	0.36	931
SPLS19N2-3x10N	SPLS19N2-3x10N-MH			24x15				
SPLS19N2-4x10N	SPLS19N2-4x10N-MH	3.5-19	35-190	24x10				
SPLS19N2-5x10N	SPLS19N2-5x10N-MH			24x15				
SPLS19N2-8x10N	SPLS19N2-8x10N-MH			24x12	All down			
SPLS19N2-9x10N	SPLS19N2-9x10N-MH			24x10	Even			
SPLS38N2x14N	SPLS38N2x14N-MH	8-38	80-380	32x8	Even	222	0.52	930

- Note
1. The curl cord length of SPLS19N2-8x10N is about 5m in full extension. Others are extended to about 2m in full extension.
  2. Adjusting tool for SPLS19N2-N/-MH is 931 and for SPLS38N2-N/-MH is 930.

## NSP100CNx8

Direction

Break-Over Torque Wrench



NSP100CNx8

Assembly Preset Open End Spanner Break-Over

RoHS

- Ideal for SMA connector tightening
- 90 degree of "breaking" upon reaching the set torque to reduce the possibility of over-torque

Model (Body Size × Width)	Torque Range [cN·m]	Head Dimension (mm)	Overall Length (mm)	Weight (kg)
NSP100CNx8	50-100	16x4	128	0.33

- Note
1. A torque wrench tester is necessary for torque setting. Specify required set torque when you order.

### NSP Optional Accessories

Thrusting Tool (P.45)

Part #	Applicable Model
310	NSP100CNx8





# QSPCA Slip Type Torque Wrench

Direction



Assembly Preset Ratchet Head Slip Type



- Cam action mechanism generates a 45 degree "slip" action.
- No torque variation by gripping point
- Conforms to the Electrostatic Discharge (ESD) standard

Model	Torque Range			Overall Length [mm]	Sq. Drive [mm]	Weight [kg]	Accuracy [%]
	Min.-Max. [N·m]	Min.-Max. [kgf·cm]	Min.-Max. [lbf·in]				
QSPCA6N	2-6	20-60	20-50	197	6.35	0.33	±6%
QSPCA12N	4-12	40-120	40-100				
QSPCAMS6N	2-6	20-60	20-50				
QSPCAMS12N	4-12	40-120	40-100	267	9.53	0.64	±4%
QSPCA30N	10-30	100-300	90-270				
QSPCA70N	20-70	200-700	180-620				
QSPCAL30N	10-30	100-300	90-270	267	9.53	0.81	±4%
QSPCAL70N	20-70	200-700	180-620				

Note 1. A torque wrench tester is necessary for torque setting. Specify required set torque when you order. Ex. QSPCA6N x 5N·m  
 2. Adjusting tools for QSPCA are sold separately.  
 3. Limit Switch specifications are AC30V below 1A, DC30V below 1A.  
 4. Standard curl cord can be extended to about 2m in full extension.  
 5. Female connector for LS cable is sold separately. Part# WA5219K.  
 6. QSPCA70N and QSPCAL70N have knurled handles.

## QSPCAMS/ QSPCALs

- QSPCA style with Limit Switch output
- Wired Error-Proofing, Pokayoke, system for assembly processes



### POKA Patrol, Count Checker CNA-4mk3

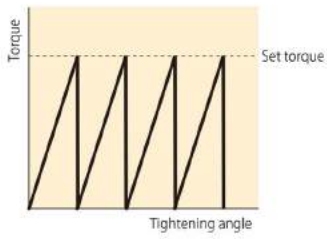
Refer to page 27.



\* Sold separately



### Wave form of slip type torque wrench



### QSPCA Optional Accessories



931  
930

Adjusting Tool (P.45)

Part #	Applicable Model
931	QSPCA6N, QSPCAMS6N QSPCA12N, QSPCAMS12N
930	QSPCA30N, QSPCAL30N QSPCA70N, QSPCAL70N QSPCAFH30N, QSPCAFH70N

## QSPCAFHP/FH

- Wireless error-proofing, Pokayoke, system



### Receiver R-FH256

Refer to page 29 for wireless Pokayoke system configuration.

\* Sold separately



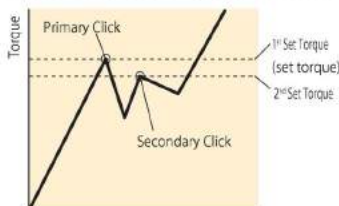
Note QSPCAFHP transmitter is not provided separately.

## YCL2 Two Step Motion Torque Wrench

Direction



### Wave form of two step motion torque.



Assembly Adjustable Interchangeable Graduation Two Step Motion



- Two step motion prevents over-torque.
- Suitable for assembly of critical parts
- Easy torque setting by graduation
- Interchangeable head

Head Size	S.I. Model	Torque Range [N·m]		Metric Model	Torque Range [kgf·cm]		American Model	Torque Range [lbf·in/lbf·ft]		Max Hand Force [N]	Effective Legth [mm]	Overall Length [mm]	Weight [kg]
		Min.-Max.	Grad.		Min.-Max.	Grad.		Min.-Max.	Grad.				
10D	YCL10N2x10D	5-10	0.10	100YCL2	50-100	1	YCL100I	50-100	1	46.5	215	245	0.35
	YCL20N2x10D	10-20	0.20	200YCL2	100-200	2	YCL200I	100-200	2	93	215	245	0.35
12D	YCL40N2x12D	20-40	0.25	400YCL2	200-400	2.5	YCL400I	200-400	2.5	145.5	275	309	0.53
	YCL70N2x12D	35-70	0.50	700YCL2	350-700	5	YCL600I	300-600	5	254.5	275	309	0.53
15D	YCL90N2x15D	45-90	0.25	900YCL2	450-900	2.5	YCL750I	400-750	2.5	236.8	380	414	1.05
	-	-	-	-	-	-	YCL1000I	600-1000	5	236.8	380	414	1.05
19D	YCL140N2x15D	70-140	0.50	1400YCL2	700-1400	5	YCL100F	45-100	0.5	368.4	414	607	1.75
	YCL180N2x19D	90-180	-	1800YCL2	900-1800	-	-	-	-	310	579	607	1.75
-	-	-	-	-	-	-	YCL150F	80-150	0.5	310	579	607	1.75

# CPT-G PRO TORK/ Digital Torque Wrench for Tightening

Direction



## PRO TORK™



CPT50×12D-G



CPT100×15D-G

### How to Order:

[Ex. 1] CPT100×15D-G-SET

\* "Set" model version  
with standard accessories

[EX. 2] CPT200×19D-G

\* "Torque Wrench Only" version  
without standard accessories

### CPT-G Optional Accessories



844

#### Carrying Case for "SET" model only

Part #	Applicable Model Dimension [mm]	Weight [kg]
844	CPT20×10D-G ~ CPT100×15D-G H170 × W500 × D100	1.0
845	CPT200×19D-G, CPT280×22D-G H170 × W740 × D100	1.6



585



Connecting to CPT-G

#### Connecting Cable

Part #	Applicable Model
585	CPT-G - PC (D-Sub 9 Pin Female)

#### Data Processing Software

Model
EXCEL RECEIVER

Assembly	Digital	Interchangeable	Signal	Battery	RoHS
----------	---------	-----------------	--------	---------	------

- Highly responsive to the applied torque value with indicator display
- Equipped with bright LED lamp indicating current torque level
- 5 changeable units of measure through keypad set up
- Data memory, torque set registration and output functions

### "Torque Wrench Only" Models

Model	Torque Range								Overall Length [mm]	Weight [kg]		
	[N-m]		[kgf-cm]		[kgf-m]		[lbf-in]				[lbf-ft]	
	Min.-Max.	1 digit	Min.-Max.	1 digit	Min.-Max.	1 digit	Min.-Max.	1 digit			Min.-Max.	1 digit
CPT20×10D-G	4-20	0.02	40-200	0.2	0.4-2	0.002	36-180	0.2	3-14.5	0.02	280.5	0.63
CPT50×12D-G	10-50	0.05	100-500	0.5	1-5	0.005	100-440	0.5	7.5-36	0.05	282.5	0.65
CPT100×15D-G	20-100	0.1	200-1000	1	2-10	0.01	200-880	1	15-73	0.1	384.5	0.85
CPT200×19D-G	40-200	0.2	400-2000	2	4-20	0.02	360-1700	2	30-150	0.2	475.5	1.37
CPT280×22D-G	56-280		560-2800		5.6-28		500-2400		42-200		591.5	1.76

- Note
1. "Torque Wrench Only" version is provided in basic carton product box and does not include TQH Head, Batteries, Storage Case.
  2. "Overall Length" does not include the length of interchangeable head TQH.
  3. "Weight" does not include the weight of interchangeable head TQH and batteries.
  4. Interchangeable heads are sold separately. Refer to page 42-45.

### "Set" Models including Accessories

Model	Standard Accessory			
	Ratchet Head		Battery	Storage Case
	Model	Sq. Drive [mm]		
CPT20×10D-G-SET	TQH10D	9.5	AA Alkaline	Small
CPT50×12D-G-SET	TQH12D	12.7		
CPT100×15D-G-SET	TQH15D		19.0	Battery (2 pcs)
CPT200×19D-G-SET	TQH19D			
CPT280×22D-G-SET	TQH22D			

Note Recommendation: Use 2xAA Ni-MH batteries for longer continuous use.

### CPT-G Common Specifications

Accuracy	±3% of indicated value
Tightening Direction	Clockwise/Counter clockwise
Display/Character Height	14 segment LCD 6 digits/7mm 7 segment LCD 4 digits/3mm
Battery Life Indicator	4 steps
Number of Data Memory	50
Torque Setting Memory	Preset Tightening mode: 10 torque values to register Judgment Tightening mode: Up to 10 values of each Upper/Lower/Tightening direction
Basic Function	Auto power off ( 3 minutes)
	Auto memory/Reset
	Auto zero
	Over torque alarm
Power	AA battery × 2pcs
Continuous Use	40 hours
Operating Condition	0-40 Celsius below 85%RH (no condensation)

Several different tightening modes available to cater to a variety of applications. Quick and accurate tightening while preventing errors.

Modes include:

**Preset Tightening Mode, Judgment Tightening Mode, Peak/Run Modes**

\* Retightening/loosening torque is performed in the Peak Mode.

**Preset Tightening Mode:** Allows user to set the target torque with specific % of torque allowable beyond target, then the red LED moves towards the right to indicate the level of the applied torque. When it reaches the target torque range, the blue LED blinks and the buzzer signals tightening completion.

**Judgment Tightening Mode:** Allows user to set judgment ranges for lower/upper limit in the tightening operation. Upon tightening completion a judgment is made as torque value is stored in the memory.

Display example 1



Preset Tightening Mode  
Red LED shows the level of the applied torque

Display example 2



Judgment Tightening Mode  
As torque is being applied prior to completion

Display example 3



Judgment Tightening Mode  
The case of exceeding target torque range



# CTA2-G Digital Torque and Angle Wrench

Direction



- Assembly
- Digital
- Interchangeable
- Signal
- Re-Chargeable

RoHS

- Snug and angle setting functions
- Buzzer/Light alerts to snug torque and angle completion
- Angle mode activates automatically, once snug torque is achieved.

Accuracy ±1%

Model	Torque Range [N·m]		Torque Range [kgf·m]		Torque Range [lbf·ft]		Angle Measuring Range		Angle Accuracy	Overall Length [mm]	Weight [kg]	Interchangeable Head
	Min.-Max.	1 digit	Min.-Max.	1 digit	Min.-Max.	1 digit	Min.-Max.	1 digit				
CTA50N2×12D-G	(2.5) 10-50	0.05	(0.25) 1-5	0.005	(1.85) 7.5-36.5	0.05			±2°+1 digit (Angular velocity is 30°/X-180°/s when the bolt turned to 90°)	282	0.58	QH12D
CTA100N2×15D-G	(5) 20-100	0.1	(0.5) 2-10	0.01	(3.8) 15-75	0.1				384	0.63	QH15D
CTA200N2×19D-G	(10) 40-200	0.2	(1) 4-20	0.02	(7.5) 30-150	0.2				475	0.78	QH19D
CTA360N2×22D-G	(18) 72-360	0.4	(1.8) 7-36	0.05	(13) 52-260	0.5	0-999°	1°		713	1.13	QH22D
CTA500N2×22D-G	(25) 100-500	0.5	(2.5) 10-50	0.05	(18) 72-360	0.5				949	4	
CTA850N2×32D-G	(43) 170-850	1.0	(4.3) 17-85	0.1	(31) 124-520	1			1387	5.14	QH32D	

- Note**
1. The value shown in ( ) shows the lowest snug torque. Accuracy cannot be guaranteed for snug torque set beyond the operative torque range.
  2. Overall length does not include interchangeable head.
  3. PH (Pipe wrench head) type interchangeable head cannot be used with this model.
  4. CTA500N2×22D-G and CTA850N2×32D-G have knurled handles.

**Standard Accessories** Battery pack/BP-5, QH interchangeable head (P.43), Quick battery charger/BC-3-G (100-240V), cable/584

## CTA2-G Features 2 Tightening Modes: Single Spindle and Production Tightening Modes

**1. Single Spindle Tightening Mode:** For angle method tightening of a single bolt tightening with snug torque, tightening angle and tightening angle upper limit settings.

**2. Production Tightening Mode:** For angle method tightening of multi spindle, with tightening torque, snug torque, 1st, 2nd and 3rd tightening angle, each upper limited angle, the numbers of spindles are registered.

By using the included software package, various settings can be done through the PC and transferred to the wrench with the final tightening values being sent back to an Excel spreadsheet.

### CTA2 Optional Accessories

#### Battery Pack (P.46)

Model
BP-5

#### Quick Battery Charger (P.46)

Model	Voltage
BC-3-G	100-240V

#### Printer (P.64)

Model
EPP16M3

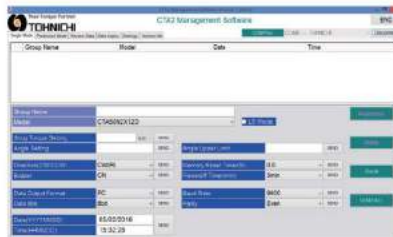
#### Connecting Cable (P.46)

Part #	Applicable Model
575	CTA2-G - PC, EPP16M3 (D-SUB 9 Pin Female)
584	CTA2-G - PC (USB A Type)

- Note**
1. ( ) shows pin shape of the connecting cables.
  2. Contact Tohnichi for other types of connecting cables.

#### Carrying Case (P.45)

Model	Applicable Model Dimension [mm]	Weight [kg]
846	CTA50N2×12D-G, CTA100N2×15D-G, H170 × W500 × D100	1.0
847	CTA200N2×19D-G, CTA360N2×22D-G, H170 × W740 × D100	1.6



Single spindle tightening mode setting display



Production tightening mode setting display

Single Data Output Time : 05/02/2016 15:41:38				
Memory Counter	Angle	Torque	Date	Time
21	89°11.5	85.02/05	15.03.08	
22	85°12.4	85.03/05	15.03.08	
23	98°10.3	85.03/05	15.03.08	
24	87°11.3	85.03/05	15.03.10	
25	87°15.1	85.03/05	15.03.19	
26	41°13.3	85.03/05	15.03.16	
27	41°8.9	85.03/05	15.03.18	

Output data in single spindle tightening mode

Production Memory Counter Data Time				
Production	Memory Counter	Date	Time	
	001	16/03/05	15:44:20	
Ball No.	1st Angle	2nd Angle	3rd Angle	Snug Torque
1	17.3	+000	+000	+000
2	27.6	+000	+000	+000
3	33.1	+000	+000	+000

Output data in production tightening mode

### CTA2-G Common Specifications

Data Memory	999 data (Tightening torque, 1st angle value, 2nd angle value, 3rd angle value and final torque value)
Measurement Mode	Single spindle/Production mode
Data Output	RS232C compliant
Zero Adjustment	Auto zero (Angle, Torque)
Power	Ni-MH rechargeable battery
Continuous Use	20 hours with fully charged (8 hours by 1 hour recharging)
Recharging Time	3.5 hours
Operating Temperature [°C]	0-40
Other Functions	Snug torque, Tightening torque, Max. tightening torque, 1st, 2nd, 3rd angle, 1st, 2nd, 3rd max. angle, Number of bolts, Auto reset, Judgment, Setting through PC, Battery indicator

# DWQL Analog Torque Wrench with Digital Angle Module

Direction



DWQL100N

Assembly Adjustable Digital Ratchet Head Graduation **RoHS**

- Easily apply snug torque with "click" followed by angle with integrated digital angle display.
- Digital angle starts once snug torque setting is achieved.
- Correct angle is calculated and shown even when ratcheting feature is used.

Accuracy ±3%

S.I. Model	Torque Range [N·m]		Angle Range		Angle Accuracy	Overall Length [mm]	Weight [kg]
	Min.-Max.	Grad.	Min.-Max.	1 digit			
DWQL50N	(5) 10-50	0.5			±2°+1 digit (Angular velocity is 30°/s-180°/s when the bolt is turned to 90°.)	260	0.62
DWQL100N	(10) 20-100	1				335	0.86
DWQL140N	(25) 30-140					400	1.00
DWQL200N	(30) 40-200	2	0-999°	1		490	1.6
DWQL280N	(30) 40-280					695	2.2
DWQL420N	(40) 60-420				995	3.6	

- Note**
1. The capacity values in the ( ) are minimum setting values for snug torque, but these values are not within guaranteed accuracy range.
  2. A value in the ( ) might not be exact same when purchased M-DW is installed on LS torque wrench.
  3. Certificates of calibration for both torque and angle are included.
  4. Prior to use, confirm final applied torque value do not exceed max torque of the tool.



\* M-DW shows 20° from snug torque.

## M-DW

- Convert torque wrench with limit switch to angle torque wrench by installing M-DW.

### Digital Angle Module

Model	Description
M-DW	Angle module for torque wrench with limit switch

- Note**
1. M-DW can be installed on torque wrench with limit switch except for the following models: QSPCAL5, ALS, ACLS, and MS type torque wrench, Refer to page 28.
  2. Operate within torque range of installed torque wrench.
  3. Certificate of angle calibration is attached.

### M-DW Specifications

Range of Angle	0-999°
1digit	1°
Angle Accuracy	±2°+1 digit (Angular velocity is 30°/s-180°/s when the bolt is turned to 90°.)
Display	7 segments LED, 3 digits/Character height 10mm
Continuous Operation	60 hours
Operating Condition	0-40°C Below 85%RH (no condensation)
Standard Accessories	Limit switch with connector 1 pc.
	Screw & Washer: 2 pcs. per each
	Operating instruction, AAA battery: 1 pc.
Weight	0.12kg

- Torque wrench with Limit Switch is converted to digital angle torque wrench.



# WQL Analog Torque and Angle Wrench

Direction



WQL100N4

Assembly Dial Indicating Ratchet Head Graduation Angle Direct Reading **RoHS**

- Includes built-in protractor with flexible arm
- Specialized version of QL

Accuracy ±3%

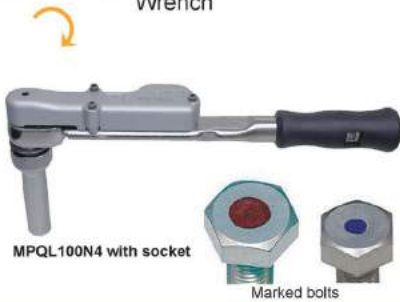
S.I. Model	Torque Range [N·m]		Metric Model	Torque Range [kgf·cm/kgf·m]		American Model	Torque Range [lbf·in/lbf·ft]		Sq. Drive [mm]	Overall Length [mm]	Angle Scale	
	Min.-Max.	Grad.		Min.-Max.	Grad.		Min.-Max.	Grad.			Max.	Grad.
WQL50N	(5) 10-50	0.5	450WQL3	(50) 100-500	0.5	450WQL3-A	(40) 100-400	5	9.5	260		
WQL100N4	(10) 20-100	1	900WQL4	(100) 200-1000	1	900WQL4-A	(7) 15-75	1	12.7	345	360°	2°
WQL200N4	(30) 40-200		1800WQL4	(300) 400-2000	2	1800WQL4-A	(20) 30-150	2		495		
WQL280N	(30) 40-280	2	2800WQL3	(3) 4-28		2800WQL3-A	(20) 30-200	2	19.0	695		
WQL420N	(40) 60-420		4200WQL2	(4) 6-42	0.2	4200WQL2-A	(30) 60-300	3		975		

- Note**
1. The capacity value in the ( ) are minimum setting value for snug torque, but this value is not within guaranteed accuracy range.
  2. WQL Models are supplied upon request.



# MPQL/MQL

**Direction** Marking Torque Wrench



MPQL100N4 with socket

Marked bolts

Assembly Pre-Lock Ratchet Head Graduation Quick Drying Ink

RoHS

- Mechanism marks bolt as torque is achieved.
- Requires special socket, marker and ink

S.I. Model	Torque Range [N·m]		Metric Model	Torque Range [kgf·cm/kgf·m]		American Model	Torque Range [lbf·in/lbf·ft]		Overall Length [mm]	Weight [kg]
	Min.-Max.	Grad.		Min.-Max.	Grad.		Min.-Max.	Grad.		
MPQL50N	10-50	0.5	450MPQL	100-500	5	450MPQL-A	100-400	5	246	0.7
MPQL100N4	20-100	1	900MPQL4	200-1000	10	900MPQL4-A	15-75	1	320	0.95
MPQL140N	30-140		1400MPQL	400-1400		1400MPQL-A	30-100			
MPQL200N4	40-200		1800MPQL4	400-2000		1800MPQL4-A	30-150			
MQL280N	40-280	2	2800MQL3	4-28	0.2	2800MQL3-A	30-210	2	692	2.6

**Note** Use Tohnichi's original socket. Standard sockets can not be used.  
**Standard Accessories** Hex key for torque adjustment

# MQSP

**Direction** Marking Torque Wrench



MQSP100N with socket

Assembly Preset Ratchet Head Quick Drying Ink

RoHS

- Mechanism marks bolt as torque is achieved.
- Preset style of MPQL

Model	Torque Range			Overall Length [mm]	Weight [g]
	[N·m]	[kgf·cm]	[lbf·in]		
MQSP50N	10-50	100-500	88.5-442.5	240	0.7
MQSP100N	20-100	200-1000	177-885	315	1.0
MQSP140N	30-140	400-1400	265.5-1239.1	380	1.1
MQSP200N	40-200	400-2000	354-1770.1	465	1.8

**Note** 1. Use Tohnichi original socket. Standard sockets can not be used.  
 2. A torque wrench tester is necessary for torque adjustment. Specify required set torque when you order.  
 3. Adjusting tool #930 is sold separately.  
 4. MQSP200N has knurled handles.

## MPQL/MQL/MQSP Optional Accessories

### Marker Head

Model	Part #	Marking size	Color	Applicable Socket Size
MK53RB	1780	5mm	Red, Blue	W17 or more
MK53WY	1782		White, Yellow	*Need a Marker Guide
MK53RB	2780		Red, Blue	W16 or less
MK53WY	2782		White, Yellow	
MK93RB	2783	9mm	Red, Blue	W17 or more
MK93WY	2785		White, Yellow	

**Note** 1. #1780/1782 is for previous sockets, size W16 or less, #1700 to 1704.  
 For the size W17 or more of new Sockets, #2705 to 2717, 2716 and 2717, requires a Marker Guide #2786 additionally.  
 2. #2783/2785 is for new Sockets only. When use it with an old sockets, size W17 or more, #1705 to 1723, remove Marker Return Spring and a Guide from the Marker Head. Previous 9mm Marker Head #1783, 1785 can not be used for new Sockets.  
 3. When newly use 5 mm marking for W17 or more of new Sockets #2705 to 2723, 2716 and 2717, purchase Marker Guide set #2787/2788.

### Marker Guide

Model	Part #	Marking size	Content
Marker Guide	2786	-	-
Marker Guide set MK53RB	2787	5mm	1780 and 2786
Marker Guide set MK53WY	2788		1782 and 2786

**Note** 1. Marker Guide 2786 can be used with Marker Head 1780, 1782 only.  
 2. 2787 and 2788 are applicable for the sockets over W17, #2705 to 2723, 2716 and 2717.

### Refill Ink and Solvent

Model	Part #	Color
Refill Ink R	1770	Red
Refill Ink B	1771	Blue
Refill Ink W	776	White
Refill Ink Y	777	Yellow
Solvent	794	For White and Yellow

**Note** 1. Solvent for red and blue inks is not available.  
 2. Refill Ink and solvent are classified as hazardous material in Aviation law.

### Felt Tip

Model	Part #	Color
Felt tip for MK53RB	1775	Red, Blue
Felt tip for MK53WY	775	White, Yellow
Felt tip for MK93RB	1776	Red, Blue
Felt tip for MK93WY	1777	White, Yellow

**Note** Sold in pack of ten tip

### Extension Bar

Specification	Part #	Applicable Model
50mm	1749	MPQL/MQSP50N-200N4
100mm	1748	MPQL/MQSP50N-200N4
50mm	1752	MQL280N

**Note** Only one Extension Bar can be connected to a socket.

### Socket

Model	Part #	Width Across Flat [mm]	Length H [mm]	Outside Width ød [mm]	Applicable Torque T-max [N·m]	Applicable Model
Socket 4MH-10	2700	10	100	17.5	25	MQSP/MPQL 50N-200N4
Socket 4MH-12	2701	12		20.5	35	
Socket 4MH-13	2702	13		21.5	40	
Socket 4MH-14	2703	14		22.5	60	
Socket 4MH-16	2704	16		25	70	
Socket 4MH-17	2705	17		28	110	
Socket 4MH-18	2706	18		29	120	
Socket 4MH-19	2707	19		30	170	
Socket 4MH-22	2709	22		30	190	
Socket 4MH-24	2710	24		32.8	200	
Socket 6MH-22	2720	22	110	32	255	MQL280N
Socket 6MH-24	2721	24		34.5	255	
Socket 6MH-27	2722	27		38.5	255	
Socket 6MH-30	2723	30		42	280	

**Note** 1. To be applied new Marker Heads #2780 and 2782 to previous W16 or less Sockets #1700 to 1704, remove a spring from the inside of socket and insert it.  
 2. To use previous W17 or more size of Sockets #1705 to 1723, 2716 and 2717 with 5mm Marker heads #1780/1782, required Marker Guide #2786.

### Inch Size Socket

Model	Part #	Width Across Flat		Tmax [lbf·in] (N·m)	Length H [mm]	Outside Width ød [mm]	Applicable Model
		[inch]	[mm]				
Socket 4MH-7/16	2712	7/16	11.113	300(35)	100	20	MQSP/MPQL 50N-200N4
Socket 4MH-1/2	2713	1/2	12.7	400(45)			
Socket 4MH-9/16	2714	9/16	14.288	700(80)			
Socket 4MH-5/8	2715	5/8	15.875	800(90)	105	28.5	MQSP/MPQL 50N-200N4
Socket 4MH-11/16	2716	11/16	17.463	1000(120)			
Socket 4MH-3/4	2717	3/4	19.05	1500(170)	30		

### MPQL/MQSP Torque Adjusting Adapter

Model	Part #	Applicable Model	Applicable Tester
MQSP 3/8-17 Adapter	817	MPQL50N MQSP50N	DOTE50N3-G
MQSP 1/2-17 Adapter	818	MPQL 100N4-200N4 MQSP50N-200N	DOTE100N3-G DOTE200N3-G

### MQSP Adjusting Tool

Part #	Applicable Model
930	MQSP50N/100N/200N

As of May 2016, sockets and marker head were renewed. Contact to Tohnichi for combination of previous parts and new one.

# MCSP

Marking Torque Wrench

Assembly **Preset** Interchangeable

RoHS

Direction

**NEW**



MCSP50NX15D with a MSH head and maker



Marking Example

- Interchangeable type marking torque wrench.
- Put ink mark on a bolt/nut when torque achieved.

Head Size	Model	Torque Range			Overall Length [mm]	Weight [kg]
		[N·m]	[kgf·cm/kgf·m]	[lbf·in]		
		Min.-Max.	Min.-Max.	Min.-Max.		
	MCSP50N×15D	10-50	100-500	88.5-442.5	282	0.65
	MCSP100N×15D	20-100	200-1000	177-885	355	0.9
	MCSP140N×15D	30-140	300-1400	265.5-1239.1	418.5	1.0

Accuracy ±3%

- Note**
1. Overall length does not include interchangeable head.
  2. Adjusting tools are sold separately.
  3. Interchangeable heads are optional.
  4. A torque wrench tester is necessary for torque setting. Specify required set torque when you order. Ex. MCSP100N×15D × 80N·m

## MCSP Optional Accessories

Spanner type Interchangeable Head

Model (Body size x Spanner size)	Tmax. [N·m]	Head Outside Width	Head Thickness	Weight [g]	Applicable Marker End	
MSH15Dx12	30	30	8	82	1671 Silver	
MSH15Dx13		31		83		
MSH15Dx14		32		84.5		
MSH15Dx16	40	35	9	95		
MSH15Dx17		38		106.5		
MSH15Dx18	55	39	10	108	1672 Black	
MSH15Dx19		40		115		
MSH15Dx21		44		123		
MSH15Dx22	75	46	11	132.5		1673 Gold
MSH15Dx24		50		132		
MSH15Dx26		51		152.5		
MSH15Dx27	100	58	12	192		
MSH15Dx30		60		192		
MSH15Dx32		60		194.5		

- Note**
1. One piece of Marker End and attachment bolt comes with a MSH head.
  2. MCSP body and MSH head are fixed by the attachment bolt W2 mm.



MSH15Dx14



MSH15Dx21



MSH15Dx32

Marker Pen

Part #	Description
1651	Red maker, 10pcs/pack
1652	Red maker, 100pcs/pack
1653	Blue maker, 10pcs/pack
1654	Blue maker, 100pcs/pack

- Note**
1. Disposable type maker.
  2. 2000 times of stamping by a maker. \* It depends on conditions.



MCSP marker red



MCSP maker blue

Marker End

Part #	Description
1671	Silver
1672	Yellow
1673	Gold



1671



1672



1673

Adjusting Tool

Part #	Description
930	MCSP50N - 140N

# CMQSP

Marking Torque Wrench

Assembly **Preset** Ratchet Head Quick Drying Ink

RoHS

Direction



CMQSP-M8

Marked bolt head



- Preset style marking torque wrench for hex screws
- Mechanism marks side of bolt and work piece.

Model	Torque Range			Width Across Flats [mm]	Overall Length [mm]	Weight [kg]
	[N·m]	[kgf·cm]	[lbf·in]			
CMQSP-M6	5-25	50-250	44.3-221.2	5	241	0.85
CMQSP-M8	10-50	100-500	86.5-442.5	6		0.85
CMQSP-M10	20-100	200-1000	177-885	8	320	1.13
CMQSP-M12	30-140	300-1400	265.5-1239.1	10	380	1.13

Accuracy ±3%

- Note**
- A torque wrench tester is necessary for torque setting. Specify required set torque when you order. Ex. CMQSP-M10 × 50N·m

**Standard Accessories** 2 x Hex wrench (including 1 spare), Marker head, Marker case, Hex wrench position adjustment tool

## CMQSP Optional Accessories

Bit

Part #	Description
724	CMQSP-M6 Bit
725	CMQSP-M8 Bit
726	CMQSP-M10 Bit
727	CMQSP-M12 Bit

Marker Head

Part #	Description
792	Marker Head for CMQSP

Refill Ink and Solvent

Part #	Description
776	White Ink
777	Yellow Ink
794	Solvent

CMQSP Adjusting Adapter

Part #	Description	Applicable Tester
811	CMQSP-M6 Adapter	DOTE20N3-G, 50N3-G, 100N3-G
812	CMQSP-M8 Adapter	
813	CMQSP-M10 Adapter	
814	CMQSP-M12 Adapter	DOTE200N3-G, 500N3-G

CMQSP Adjusting Pole Holder

Part #	Applicable Model	Applicable Tester
815	CMQSP-M6, M8 Pole Holder	DOTE20N3-G, 50N3-G, 100N3-G
816	CMQSP-M10, M12 Pole Holder	DOTE200N3-G, 500N3-G

- Note**
- A torque wrench tester, Tohnichi's Adjusting Adapter, and Pole Holder are necessary for CMQSP torque adjustment.

CMQSP Adjusting Tool (P.46)

Part #	Applicable Model
930	CMQSP-M6, M8, M10, M12



# CNA-4mk3

POKA Patrol/  
Count Checker



CNA-4mk3

Assembly Digital Relay Counter Judgment

RoHS

- Tightening count verification with connecting up to 4 torque wrenches.
- Max. 8 preset counts, timer, alarm by buzzer and lamp function are built in.
- Ideal for manufacturing process management of mixed production line.

Count Display	16 × 32 dot-matrix LEDs
OK/NG Judgment Display	30 × 25 square display lamp (commonly used for OK/NG) OK: Blue lamp turned on NG: Red lamp blinking + Buzzer sounds (4 patterns)
Work No. Selection Display	1-digit 7-segment LED
Count Input	Contact input × 4
Max. Tightening Number of Bolts	99 counts
Max. Number of Works	8 sets
OK/NG Judgment Setting	• Preset judgment • END input judgment • Automatic judgment (0 to 300 seconds in steps of 1 second)
Output Function	• OK/NG output (Relay contact output rating: 30 V DC, 1 A, 125 V AC, 0.3 A) • Torque wrench selection signal output (Open collector rating: 100 mA)
Input Function	• SELECT input × 4 • START input • END input • RESET input • WORK SENSOR input
Timer Function Setting	• Double count prevention timer (0 to 10 seconds in steps of 0.1 second) • Automatic reset timer (0 to 80 seconds in steps of 1 second) • Interval warning timer (0 to 99 seconds in steps of 1 second)
Setting Method	Special-purpose application software (USB communication), key operation
Operating Condition	0 ~ 40 °C, Below 85%RH (no condensation)
Power Supply/Electricity Consumption	AC100 ~ 240V ± 10% 50/60Hz, Below 10W
Weight/Dimension	400g, W121 × D175 × H44.9mm

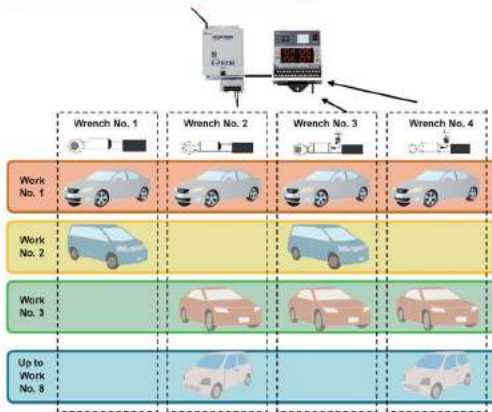
Standard Accessories Connecting cable (CNA-4mk3 to PC, USB A-B type)

Add the Count Checker to complete your torque verification system, to visualize and track clicks captured from a variety of compatible Tohnichi models.

Compatible Models • LS/MS Limit Switch Wrenches.

• Wrenches & Receivers Models Series: FH, FHSL, FHP, FHD, FD/FDD, BLA, BLE and FMA

## CNA-4mk3 Outline



### Setting example

Connect 2 LS torque wrenches directly and 2 Wireless torque wrench through receiver and I/O box.

Work No.2 is required to tighten 2 different portions, one has hexagon bolts 4pcs and the other has cap screw 3pcs

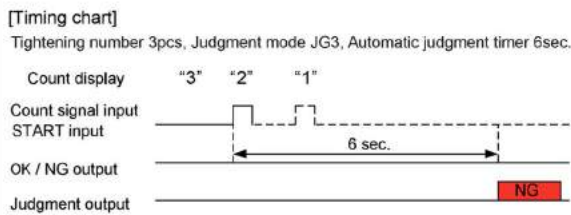
No.	Setting	WRENCH No.1	WRENCH No.2	WRENCH No.3	WRENCH No.4
2	Tightening count	4	0	3	0



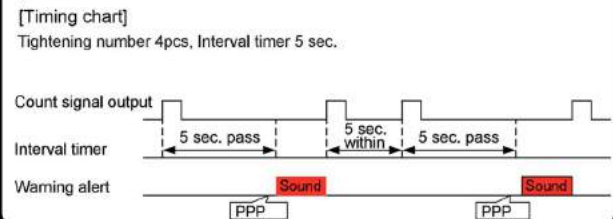
Set the number of bolts (0-99pcs) the work needs for each torque wrench. Set 0 when no torque wrench is needed.

## Example of Various Timer Functions

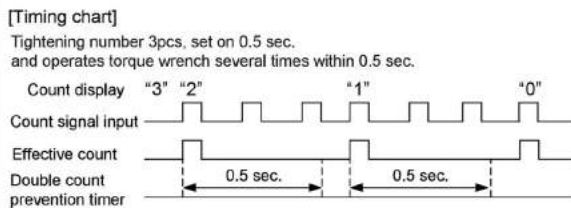
**Automatic Judgment Timer (1-300 sec. 1 sec. interval)**  
Starts after START input or input of first count signal, and judges OK/NG as the timer reaches set time



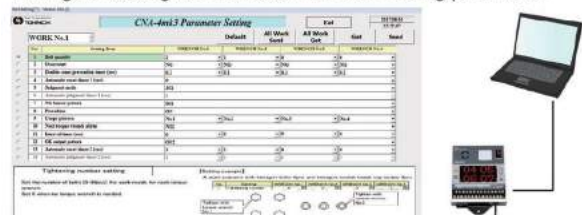
**Interval Timer (0-99 sec. 1 sec. interval)**  
If the operator does not go on to the next bolt within the interval timer (0-99 sec. 1 sec. interval), the alarm goes off to warn the operator.



**Double count prevention (0.1-10 sec. 0.1 sec. interval)**  
Prevents counting an accidental double click



**Easy setting with CNA-4mk3 setting software**  
Setting software gives instruction for each setting parameter.



Torque Wrench for Assembly