



CR2™ REFLECTIVE HIGH INTENSITY REFLECTIVE

CR2™ uses Class RA2 high intensity reflective material offering, on average, 60% more reflectivity than standard reflective clothing.

CR2™ meets the reflective performance requirements of EN12899-1 (high performance reflective sign face material).

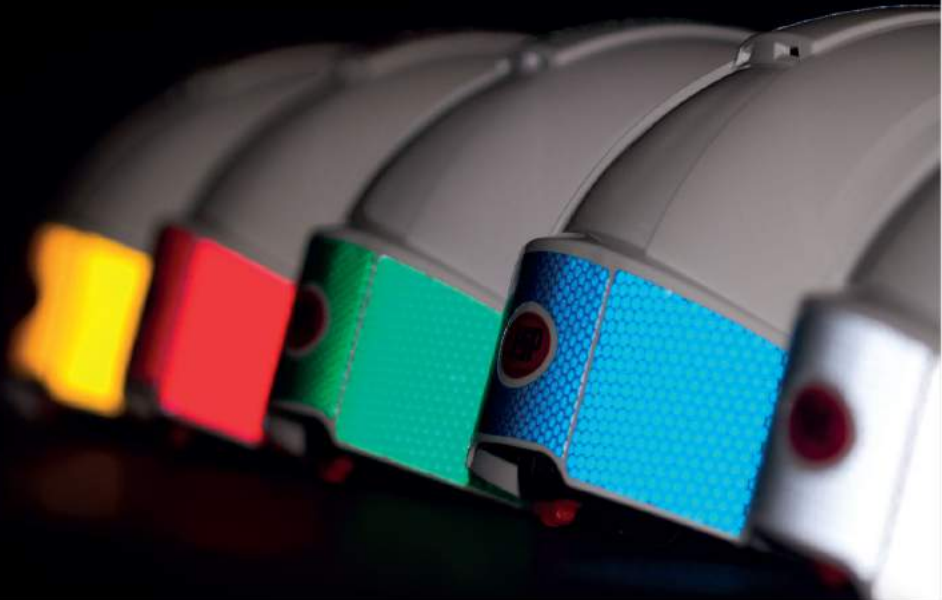




WATCH CR2™ IN ACTION
or view the video at:
<http://bit.ly/CR2-Reflective>

CHOICE OF COLOURS

Now available in a variety of colours to match a corporate identity or to denote a job position.





EVOLite® FITTED WITH SILVER CR2™

Helmet: EN397 CR2™ decal: EN12899-1

AJB170-400-000 EVOLite® CR2™ - Revolution™ wheel ratchet, vented Qty 10

AJB160-400-100 EVOLite® CR2™ - OneTouch™ slip ratchet, vented Qty 10



CR2™ FOR FIRST AIDERS SAFETY HELMETS



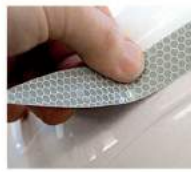
HOW TO APPLY CR2™ VIDEO
or view the video at:
<http://bit.ly/CR2Application>



SELF APPLY CR2™ FOR EVOLite®
EN12899-1

AHV390-00-00 EVOLite® CR2™ decal kit

Qty 1x10Pk



SELF APPLY CR2™ FOR EVO®3 / EVO®2
EN12899-1

AHV391-00-00 EVO3®/EVO2 CR2™ decal kit

Qty 1x10Pk



SELF APPLY FIRST AID CR2™ FOR EVOLite®
EN12899-1

AHV440-000-300 EVOLite® First aid CR2™ decal kit

Qty 1x10Pk



SELF APPLY FIRST AID CR2™ FOR EVO®3 / EVO®2
EN12899-1

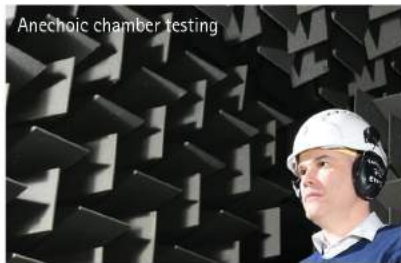
AHV441-000-300 EVO3®/EVO2 First aid CR2™ decal kit

Qty 1x10Pk

SONIS™ HELMET MOUNTED EAR DEFENDERS



The Sonis™ range has been stylishly designed with a traffic light colour code for easy identification. Materials have been chosen for both performance and comfort for extended periods of use.



Anechoic chamber testing



✓ PERFORMANCE

Designed by the JSP R&D team and developed with a leading UK acoustic engineering research facility, the Sonis™ helmet mounted range peaks at an unbeaten 36 SNR.

✓ COMFORT

The force the helmet adaptor applies and the cushion surface area work together to provide optimum cushion pressure and comfort.

✓ CUSTOMISATION

Sonis™ cups can be coloured to meet a corporate identity. They can also be printed with a company logo for improved brand recognition and to prevent theft. MOQ's apply.



✓ ADJUSTABLE STEEL ARMS

The wearer can tilt and adjust the position of the cup for optimum comfort and fit, also offering even distribution of pressure.



✓ HYGIENIC

The headband is manufactured from TPE, making it easy to wipe clean. The sealing rings are easy to replace. Hygiene kits are available for each model.



✓ UNIVERSAL COMPATIBILITY

The universal slots of JSP helmets allow for the easy fitting of the Sonis™ ear defenders, along with the JSP Surefit™ visor system for maximum protection.



SONIS 

SNR 26



Available for:     

SONIS™ 1 HELMET MOUNTED EAR DEFENDERS

EN352-3 SNR=26

Frequency (Hz) H = 32 M = 23 L = 15 SNR = 26

AEB010-0CY-800 Sonis™1 helmet mounted ear defenders Qty 10

SONIS  COMPACT

SNR 31



Available for:     

SONIS™ COMPACT HELMET MOUNTED EAR DEFENDERS

EN352-3 SNR=31

Frequency (Hz) H = 35 M = 28 L = 20 SNR = 31

AEB030-0CY-000 Sonis™C helmet mounted ear defenders Qty 10

SONIS 

SNR 36



Available for:     

SONIS™ 3 HELMET MOUNTED EAR DEFENDERS

EN352-3 SNR=36

Frequency (Hz) H = 37 M = 35 L = 26 SNR = 36

AEB040-0C1-A00 Sonis™3 helmet mounted ear defenders Qty 10



InterEX™ & InterGP™ INTEGRATED EAR PROTECTION



extreme protection



extreme protection
extra visibility



Available for:

Available for:

InterEX™

EN352-3 SNR: 29 (SNR levels may vary dependent on helmet used)

Frequency (Hz)	H = 32	M = 26	L = 19	SNR = 29
----------------	--------	--------	--------	----------

Results are dependent on helmet they are fitted to. Above attenuation is based on being fitted to an EVO*2/3 safety helmet.

AEK020-005-400 InterEX™ helmet mounted ear defenders Qty 10

InterEXV™

EN352-3 SNR: 29 (SNR levels may vary dependent on helmet used)

Frequency (Hz)	H = 32	M = 26	L = 19	SNR = 29
----------------	--------	--------	--------	----------

Results are dependent on helmet they are fitted to. Above attenuation is based on being fitted to an EVO*2/3 safety helmet.

AEK020-001-600 InterEXV™ helmet mounted ear defenders Qty 10



general purpose



general purpose
extra visibility



Available for:

Available for:

InterGP™

EN352-3 SNR: 25 (SNR levels may vary dependent on helmet used)

Frequency (Hz)	H = 29	M = 22	L = 14	SNR = 25
----------------	--------	--------	--------	----------

Results are dependent on helmet they are fitted to. Above attenuation is based on being fitted to an EVOLite® safety helmet.

AEK010-005-300 InterGP™ helmet mounted ear defenders Qty 10

InterGPV™

EN352-3 SNR: 25 (SNR levels may vary dependent on helmet used)

Frequency (Hz)	H = 29	M = 22	L = 14	SNR = 25
----------------	--------	--------	--------	----------

Results are dependent on helmet they are fitted to. Above attenuation is based on being fitted to an EVOLite® safety helmet.

AEK010-001-600 InterGPV™ helmet mounted ear defenders Qty 10



Available for:

SUREFIT™ VISOR -SEPARATES
EN166

Visor carrier and visors supplied separately.
20cm unbound polycarbonate visor offers protection from medium energy particles, liquid droplets and molten metal. Polycarbonate Visor conforms to: EN166 1.B.3.9
20cm unbound acetate visor offers protection against low energy high-speed particles and liquid droplets. Acetate Visor conforms to: EN166 1.F.3

ANV000-001-108	Visor carrier for EVO® range	Qty 10
ANX060-230-000	20cm unbound polycarb visor	Qty 10
ANX010-230-000	20cm unbound acetate visor	Qty 10



Available for:

SUREFIT™ VISOR - COMPLETE
EN166

Visor carrier complete with polycarbonate visor.
20cm unbound polycarbonate visor offers protection from medium energy particles, liquid droplets and molten metal. Standard Polycarbonate Visor conforms to: EN166 1.B.3.9
Electric arc flash visor offers protection against short circuit electric arc as well as from medium energy particles, liquid droplets and molten metal. Electric Arc Flash Visor conforms to: EN166: 1.B.3.8.9

ANW060-230-008	Visor carrier and visor for EVO® range	Qty 10
ANW310-230-008	Visor carrier and electric arc flash visor	Qty 10



Available for:

SUREFIT™ WIRE GAUZE VISOR
EN1731

Wire gauze visor for use with Surefit™ visor carrier. Offers general robustness against large, low energy, low speed particles. Conforms to: EN1731

ANX100-130-000	Surefit™ wire gauze visor	Qty 10
----------------	---------------------------	--------



Available for:

EVOSPEC® - POLYCARBONATE RETRACTABLE EYESHIELD
EN166

Easy assembly retractable eyeshields for existing helmets. Conforms to EN166.1.F

ANT010-200-000	EVOSpec® - clear	Qty 10
ANT120-200-000	EVOSpec® - smoke	Qty 10

VISILITE™ HELMET ILLUMINATION SYSTEM

Helmet illumination system, developed as a method of increasing worker visibility without dazzling colleagues.



Standards, Testing & Performance

Modes & Runtimes	Mode1: Static (9hrs) Mode2: Slow flash (190hrs) Mode3: Fast flash (150hrs)
Charge Time	Standard Charge: Approx 4.0 hours Fast Charge: Approx 2.5 hours
Operating Temperature Range:	-10°C to +50°C 14°F and 122°F
IP Rating	IP54

Available for:

AHV860-000-800	VisiLite™ EVOLite®	Qty 10
AHV855-000-800	VisiLite™ Multi: fits EVO® 2/3/5	Qty 10



FITTING VIDEO
or view the video at:
<http://bit.ly/VisiLiteHowTo>



Available for:



EVO® LINESMAN CHINSTRAP

EN397 EN50365 ANSI Z89

4-point chinstrap harness for EVO® helmets. Ideal for working at height. Releases automatically with forces between 150 & 250 Newtons.

AHV200-000-000	Qty 10
----------------	--------



Available for:



ELASTIC CHINSTRAPS

Wide elastic chinstrap that releases automatically with forces between 150 & 250 Newtons. The deluxe version features a chin-cup.

AHV000-5E0-000	Deluxe	Qty 10
AHV001-1E0-000	Standard	Qty 10



Available for:



REPLACEMENT SWEATBANDS

Made from Egyptian cotton core with porous PU coating for maximum sweat absorption. PH neutral, dermatologically tested.

AJA840-000-200	Qty 10
----------------	--------



Available for:



RAILWAY HELMET WARMER

EN20471* GO/RT 3279

Hi-visibility orange full head and face comforter.

AHV380-001-800

Qty 10



Available for:



THERMAL HELMET WARMER

EN20471

Full head and face comforter.

AHV380-001-500

Hi vis yellow

Qty 10

AHV380-001-100

Black

Qty 10



Available for:



HELMET COMFORTER

Full head comforter, easily attached to the helmet harness for warmth.

AHV000-400-000

Qty 10

*Meets the retroreflective and colorimetric requirements of the stated standards.



EVO® ID CARD HOLDER

Clear plastic ID card holder. Fits standard business card size identification. Simple push and slide mechanism.

AJB173-400-100

EVOLite® with ID card holder - white

Qty 10

*Other helmet types are available.



Full range of head accessories



at www.jsp.co.uk