

WORKING AT HEIGHT



JSP HEIGHT SAFETY EQUIPMENT QUALITY & TESTING

To ensure that JSP products meet the highest specification and perform in the most demanding situations, they are tried and tested twice, once during manufacture and again before distribution to the customer.

STATIC TEST

A force of 15kN is applied between the lower ring of the torso dummy and the attachment element of the harness, after loading the test dummy and harness into the test apparatus. To see whether the harness releases the torso dummy, the force is maintained and observed for a period of three minutes, with each

attachment element of the harness treated in this way.

DYNAMIC TEST

A single mountaineering rope without an energy absorber, 2m in length and 11mm diameter, meeting EN892-1, is used to secure the harness and test dummy weighing 100kg. Its upper attachment point is then used to suspend the dummy two metres above the fixed anchorage point and a maximum of 300mm from the centre line. A feet-first fall of around four metres is simulated by releasing the dummy without initial velocity, to ensure the harness doesn't release the dummy. The angle and orientation of both the dummy and dorsal plate are then measured. The same rope is then used to simulate a head-first fall of around four metres, by suspending the dummy from its lower anchor point before releasing, and the same measurements are then taken.

Each anchor point on the harness must be subjected to both test methods above.

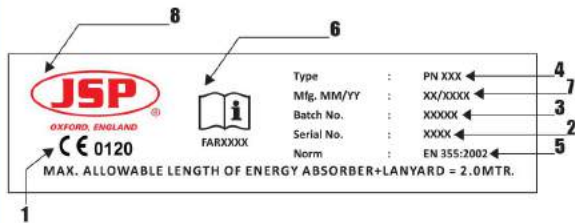




SERVICE LIFE

The service life of all JSP webbing products is ten years, including shelf life. Therefore a harness which is unopened and correctly stored for three years would have a remaining service life of seven years.

LABEL ON HARNESS OR LANYARD, WHICH MUST BE IN PLACE, INTACT AND LEGIBLE WHILE THE HARNESS OR LANYARD IS IN USE.



1. Controlling notified body
2. Serial number
3. Batch number
4. Product type
5. Standard/year
6. Considerations for use
7. Date of manufacture
8. Manufacturer



Lanyard Type:
 Serial No.
 Lanyard Product Ref.
 Date of Manufacture:
 Date First Used:

Record of Visual and Tactile Inspection

Inspection	Date			
Webbing/Rope General - not:				
cut, torn or nicked				
abraded				
heat damaged				
contaminated				
discoloured				
Stitch Patterns - not:				
broken or abraded				
pulled or loose				
Metal Fittings - not:				
corroded				
cracked or deformed				
mis-functioning				
Connectors:				
function correctly				
gates align correctly				
Plastic Fittings:				
present				
not damaged				
Other:				
label present and legible				
cleaning carried out				
Inspected by:				
Next inspection due				

INSPECTION RECORD BOOK AND CERTIFICATE OF CONFORMITY

The inspection record book should be available for all users to view and must be kept in a safe place. It should contain a table into which relevant details from the label should be copied. Details of inspections should be recorded in the table at the frequency stated in the manufacturer's instructions and risk assessment. As a minimum this should be done annually. **This will be the customer's biannual Certificate of Conformity.**

CE MARKING

All JSP's working at height equipment range carries the CE mark and conforms to all relevant European standards, which complies with the requirements of the Personal Protection Equipment Regulations.

The equipment provides protection against serious hazards, utilising complex design and manufacturing methods and is categorised as Cat III. The equipment is supplied with end-user instructions and technical information.

K2™ HARNESS RANGE

SUPERIOR HEIGHT SAFETY

This is the premium range of JSP harnesses and lanyards that come with the highest standard of ergonomics, comfort, safety and quick connect buckles. The harnesses have been designed with easy don and anti-tangle features to ensure correct fitting with maximum comfort and no compromise on safety. All of the K2™ harnesses have been tested to 136kg.



SCAN TO SEE THE VIDEO
or view the video at:
<http://bit.ly/HarnessFitting>



✔ **ULTRA LIGHT**

Ultra lightweight aluminium hardware aids in the comfort and convenience for the user.



✔ **BREATHABLE MATERIAL**

Air mesh material gives these harnesses breathability and an anti-tangle feature.



✔ **QUICK RELEASE**

Quick release buckles to make donning and doffing effortless.



TRUSTED | TESTED | TRACEABLE
See page 107 for more details

Full range of accessories (including lanyards and rescue equipment) available at: www.jsp.co.uk



K2™ 2-POINT HARNESS

EN361

This harness has two ideally positioned attachment elements for fall arrest and restraint purposes. It has fully adjustable shoulder, chest and thigh straps that use quick release buckles. Parking loops and lightweight aluminium hardware also make this a user friendly product.

- ✓ Comfortable anti-tangle airmesh on the shoulder and legs
- ✓ Quick release buckles

FAR0401 K2™ 2-point harness

Qty 2



K2™ 3-POINT HARNESS

EN361 EN358

A work positioning harness that delivers comfort and style with no compromise on safety. Together with the lightweight aluminium connectors this harness also has a work positioning belt, parking loops and quick release buckles.

- ✓ Comfortable anti-tangle airmesh on the shoulder and legs
- ✓ Quick release buckles
- ✓ Work positioning belt

FAR0402 K2™ 3-point harness

Qty 2



K2™ 5-POINT HARNESS

EN361 EN358 EN813

The ventral and lateral attachment points just add to the overall concept of this 5-point rigger's harness. It has lightweight aluminium hardware and breathable air mesh to give the user the confidence that no matter where, or for how long they work, comfort and safety are always priority.

- ✓ Comfortable anti-tangle airmesh on the shoulder and legs
- ✓ Quick release buckles
- ✓ Ventral and sternum attachment points

FAR0403 K2™ 5-point harness

Qty 2

PRO-FIT™ HARNESS RANGE

Pro-Fit™ by JSP has been designed with comfort in mind, knowing that wearing a harness all day can be very strenuous on the body. These harnesses are made from elasticated webbing offering the user the ultimate in usability. It is ultra-lightweight and very comfortable yet it does not lack the most important thing, safety. All of the Pro-Fit™ harnesses have been tested to 136kg.

JSPCHECK™
TRUSTED | TESTED | TRACEABLE
 See page 107 for more details



PRO-FIT™ 1-POINT HARNESS EN361

The ultimate in comfort and style harnessed with lightweight hardware gives this fully elasticated harness the edge for those that have to wear height safety equipment on a daily basis. Comfort is important for users as this leads to good practice when donning the product.

- ✓ Fully elasticated
- ✓ Lightweight
- ✓ Ultra comfort

PRO-FIT™ 2-POINT HARNESS EN361

Designed to move with the user in arduous conditions and with 2-points of attachment this harness appeals to everyone. It has been designed for the person that requires value, style and comfort, all of which have been harnessed together in one product.

- ✓ Fully elasticated
- ✓ Lightweight
- ✓ Versatile and adaptable

PRO-FIT™ 2-POINT QR HARNESS EN361

The quick release version of our popular 2-point Pro-Fit™ harness enables the user the versatility of quickly donning and doffing this ultra-lightweight all-rounder.

- ✓ Fully elasticated
- ✓ Lightweight
- ✓ Quick release buckles

FAR0101	Pro-Fit™ 1-point harness	Qty 5	FAR0103	Pro-Fit™ 2-point harness	Qty 5	FAR0105	Pro-Fit™ 2-point QR harness	Qty 5
----------------	--------------------------	-------	----------------	--------------------------	-------	----------------	-----------------------------	-------



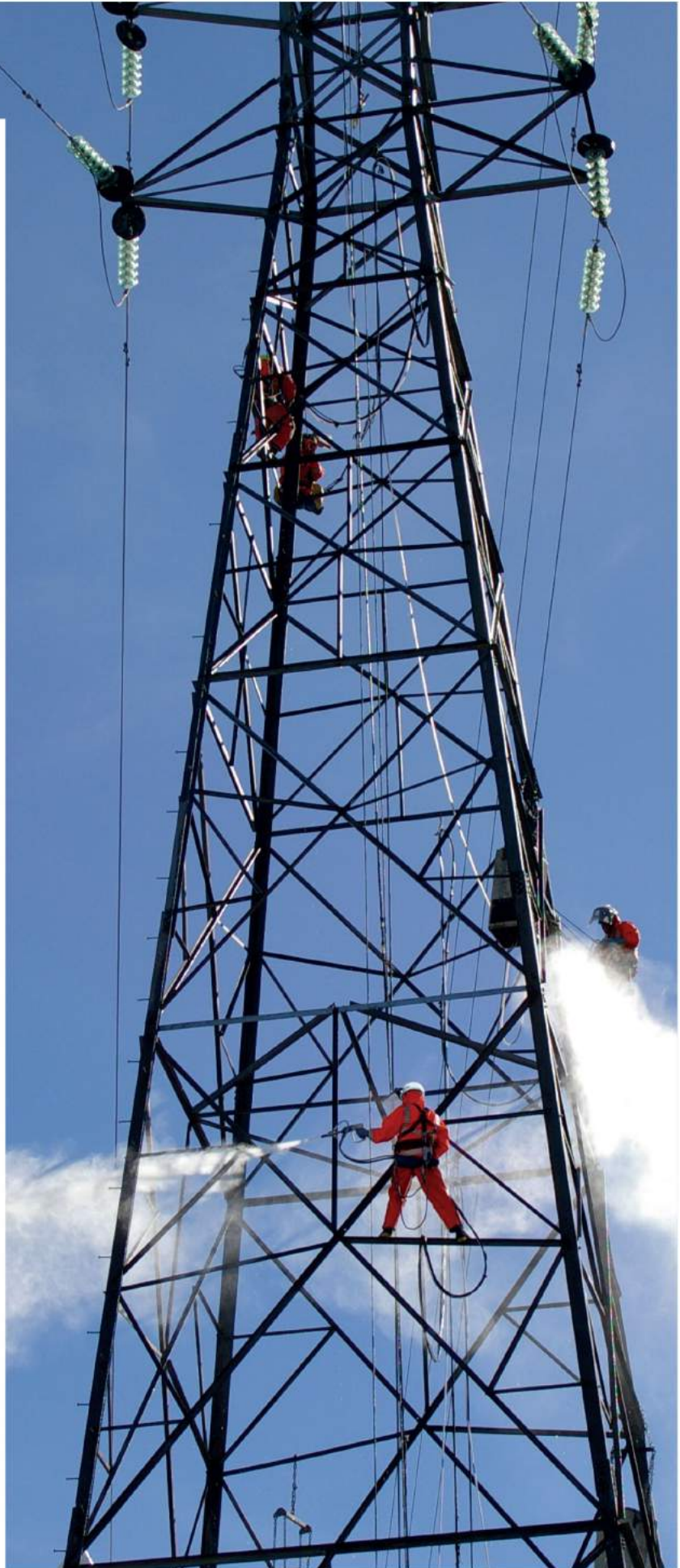
PRO-FIT™ DIELECTRIC HARNESS

EN361 EN358

This is the only harness in Europe fully insulated for working conditions where there might be a risk of electrocution. It comes with special dielectric D-rings, buckles and frames that protect the user from potential harm in electrical atmospheres.

- ✓ Electrically insulating polymers
- ✓ 3 points of attachment
- ✓ Elasticated elements

FAR0601 Pro-Fit™ dielectric harness Qty 2



WORKING AT HEIGHT

PIONEER™ HARNESS RANGE

The Pioneer™ range comes in a combination of black and grey for ease of identification between the shoulder and leg straps. Equipped with unique features that provide full comfort and ergonomics to the wearer, this range of harnesses withstands the highest of safety standards as laid out in the European Norms and is CE certified. All of the Pioneer™ harnesses have been tested to 136kg.



TRUSTED | TESTED | TRACEABLE
See page 107 for more details



PIONEER™ 1-POINT HARNESS

EN361

This harness has a two-tone colour scheme to help the user in donning and inspection. It has 1-point of attachment ideal for fall arrest applications. With aluminium hardware it makes this a comfortable day-to-day product.

- ✔ Lightweight
- ✔ Easily visible stitch patterns for inspection

PIONEER™ 2-POINT HARNESS

EN361

Two attachment points make this harness an all rounder for workers. Fully adjustable chest, shoulder and leg straps make this product fit for all sizes up to a weight of 136kg.

- ✔ Fully adjustable
- ✔ Ideal for fall arrest and restraint

PIONEER™ 3-POINT HARNESS

EN361 EN358

A 3-point harness designed for those that need a work positioning element, such as telecoms engineers. It is lightweight and comes with a padded back support for extra comfort.

- ✔ Fully adjustable
- ✔ 3 points of attachment
- ✔ Padded work positioning belt for comfort

FAR0201 Pioneer™ 1-point harness Qty 5

FAR0203 Pioneer™ 2-point harness Qty 5

FAR0204 Pioneer™ 3-point harness Qty 5



PIONEER™ 2-POINT QR HARNESS
EN361

- ✓ Fully adjustable
- ✓ Quick release buckles

PIONEER™ 2-POINT RESCUE HARNESS
EN361

- ✓ Fully adjustable
- ✓ Lightweight
- ✓ Extension strap for vertical rescue

FAR0209 Pioneer™ 2-point QR harness

Qty 5

FAR0205 Pioneer™ 2-point rescue harness

Qty 5

SPARTAN™ HARNESS RANGE



SPARTAN™ 1-POINT HARNESS
EN361

- ✓ Cost effective
- ✓ Rated to 136kg

SPARTAN™ 2-POINT HARNESS
EN361

- ✓ Front & rear attachment
- ✓ Cost effective
- ✓ Rated to 136kg

SPARTAN™ 3-POINT HARNESS
EN361 EN358

- ✓ Padded work positioning belt and sit strap for comfort
- ✓ Cost effective
- ✓ Rated to 136kg

FAR0301 Spartan™ 1-point harness Qty 5

FAR0302 Spartan™ 2-point harness Qty 5

FAR0303 Spartan™ 3-point harness Qty 5



JSPCHECK™

TRUSTED | TESTED | TRACEABLE

✓ RFID TECHNOLOGY

JSP Height Safety Equipment is fitted with RFID tags that can be scanned by a mobile device or computer to perform accurate safety inspections in minutes.

✓ ASSET MANAGEMENT

Easy, instant inventory control and in-field inspections, manage documentation and reports by tracking tools and equipment in seconds.

✓ INSPECTION & COMPLIANCE

Precise data gathering for improved compliance, automate, retain and retrieve product and training documentation instantly.



✓ TAG IT



Most of JSP's Height Safety Equipment is fitted with unique RFID tags. RFID tags can also be purchased separately so they can be retrofitted to any asset.

✓ SCAN IT



Works with compatible mobile devices. USB Stick and Desktop USB styles of scanners and readers are available.



✓ TRACK IT



The JSPCHECK™ is results driven through cloud technology, using industry-focused BIM software that offers no nonsense convenience and maximum flexibility at significantly lower costs.



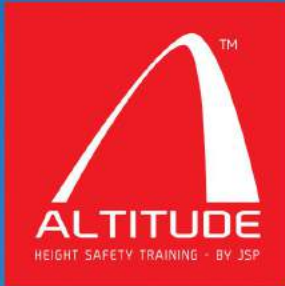
WORKING AT HEIGHT



✓ TRUSTED Any recorded data will always be secure, current and accessible. Any information that can prevent a worker from using a potentially unsafe piece of equipment can be communicated very simply and quickly.

✓ TESTED On site inspections can be performed with results instantly recorded, uploaded and documented. This information can be checked by a safety manager or user of the equipment before any use.

✓ TRACEABLE Assets can be scanned and added to your cloud based inventory. Inventories can be taken quickly and more effectively preventing shrinkage and misuse.



TOP CLASS TRAINING

Altitude™ Height Safety – a brand new division within the JSP Group – is dedicated to providing quality height safety and rescue training for all industry sectors.

Many professions, work environments and tasks involve activity above or even below ground level, meaning workers are exposed to the risk of falling a distance liable to cause injury or even death. As well as a moral obligation to ensure the workers' safety, employers must comply with a myriad of legal duties with regard to work at height. Training is a crucial part of compliance. Employers must understand how to plan and manage work at height safely and workers can carry it out without causing harm to themselves or to others.





ALTITUDE™ HEIGHT SAFETY COURSES

INTRODUCTION TO WORKING AT HEIGHT

This course offers a comprehensive introduction to general working at height. Ideal for those new to working at height, the use of case studies and HSE statistics on falls, injuries and fatalities helps to raise awareness of the dangers. The course focuses on relevant regulations, legislation, and best practice, and helps identify the safest and most suitable work equipment/methods, via risk assessment and the hierarchy of controls. A great foundation course to take before moving on to the Personal Fall Protection Equipment course.



BOOKING CODE HST01

PERSONAL FALL PROTECTION EQUIPMENT – SELECTION, USE & MAINTENANCE

This course is specifically designed for those tasked with working at height where the elected control measure will be fall restraint, fall arrest or work positioning with the use of a safety harness and associated attachments. This course will cover the selection, safe use and appropriate inspection/maintenance regimes for either a selection of generic fall protection products, or can be tailored to specifically identified products and applications. Correct fitting & adjustment of the safety harness is included, as is pre-use checking of equipment.



BOOKING CODE HST03

INSPECTION OF PERSONAL FALL PROTECTION EQUIPMENT

This course provides the required knowledge and practical hands-on experience to those tasked with conducting 3 or 6 monthly recorded inspections of items such as harnesses, lanyards and fall arresters. In addition to the essential fault finding process, the course also covers relevant regulations, legislation, standards, completion and management of the associated inspection records. This course also gives the delegates an introduction to the brand new JSP RFID Asset Management System.



BOOKING CODE HST02

PLANNING AND MANAGING WORK AT HEIGHT

Centred heavily around 'The Work At Height Regulations 2005' this course is suitable for those who plan, manage or supervise work at height activity. Similar in content to the "Introduction to W@H" course, however this course offers more detail on hazard identification, risk assessment, reporting of accidents, inspection & maintenance regimes, planning for rescue, and rescue equipment/methods available.



BOOKING CODE HST04

RESCUE FROM HEIGHT

To meet moral and legal obligations employers/sites now need to plan for emergencies at height. Just dialing 999 is not the answer! Altitude™ Height Safety offer a number of rescue courses giving co-workers the knowledge and practical skills to rescue each other, whether incapacitated, suspended post-fall, or in a position requiring emergency self-evacuation (abseiling). The courses can also be tailored to suit the structure or environment, i.e. tower cranes, scaffolding, rooftops, VNA trucks etc.



BOOKING CODE HST05