

The **WebENTRA Professional** is a modular access control product that starts with a 4 or 8 door IP controller. This product family has a highly resilient IP controller module with failover capability, dual CAN bus for interconnecting modules and dual Ethernet host links that eliminates any potential SPOF (single-point-of-failure).

A built-in web browser user interface allows platform independent setup and operation. Any authorized browser log in gives access to online real-time events log, zoom-in floorplans, and a built-in report generator. Alarms can also be acknowledged or reset upon log in. This IP controller comes with a high performance database that supports 150,000 card IDs with a buffer for 2,500,000 events.


The architecture of the WebENTRA Professional series ensure that any system can be easily expanded with optional modules for additional doors and/or I/Os to suit any application.

WebENTRA PROFESSIONAL Series




Key Features


- 4/8-Door**
IP Access Controller




- Complete 4/8 Door IP controllers modules
 - Expandable to 32 doors in a single loop
 - 16x Readers with RS485 or 8x Readers with Wiegand per module
- Navikey**
Smart Diagnostic




- Navigation keys and a LCD display on the controller for easy setup, diagnostics and quick enrolment
- 2,500,000**
Event Buffer Capacity




- Highly intelligent autonomous controller with local data storage for 2.5 million event logs
- 150,000**
Card IDs




- Maximum capacity for 150,000 card IDs
- Report**
Formats




- Reports can be generated in CSV formats for easy data export
- Failover**
Architecture




- Redundant Ethernet port
 - Redundant CAN bus link
 - Failover capability to avoid potential SPOFs
- Modular**
IO Expansion




- Modular expansion for up to 4 I/O modules in various combinations
 - Input module with 32 alarm inputs or
 - Output module with 32 relays
- Reader**
Interface




- Multiple reader interface options
 - ADNET, OSDP & Clex
 - Wiegand
- InstaStart**
Quick Setup




- Advanced Plug & Play technology for fuss free and quick setup
 - Single button press to activate instant self configuration
- Floorplan**
Real-time Status



- Floorplans with online real-time status icons for connected devices
- IBSS.web**
Enterprise SMS



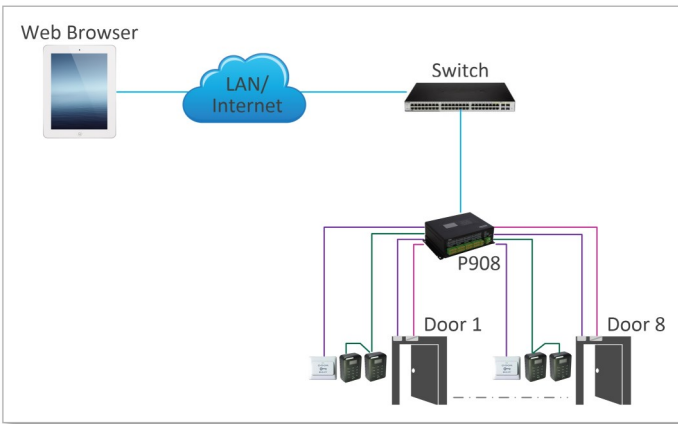
- IBSS.web Enterprise Security Management Software support
- WebBrowser**
User Interface



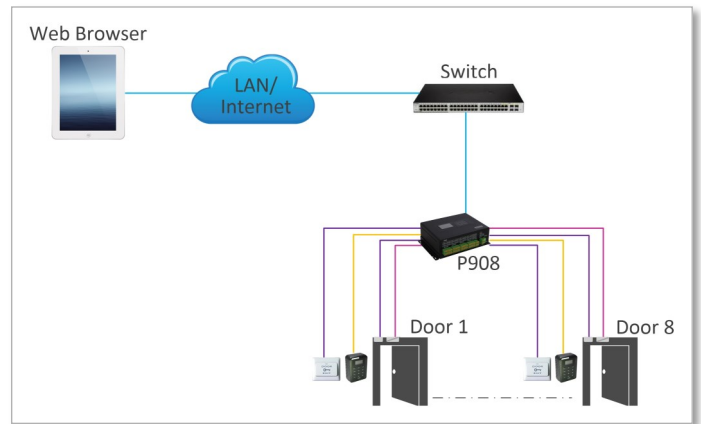
- Platform independent
 - Compatible with IE, Firefox, Safari, Chrome, etc.
 - Full support for database maintenance, event reporting and status display

System Design

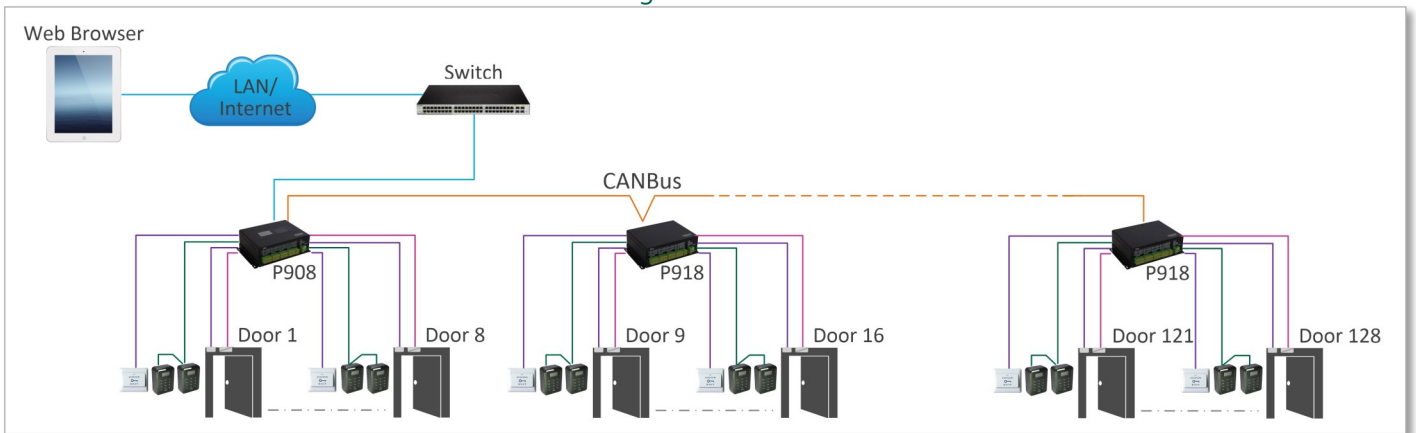
Standalone IP Controller with RS485 Readers



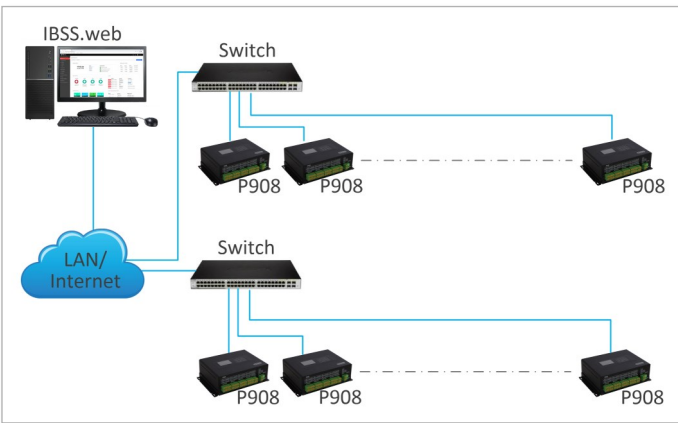
Standalone IP Controller with Wiegand Readers



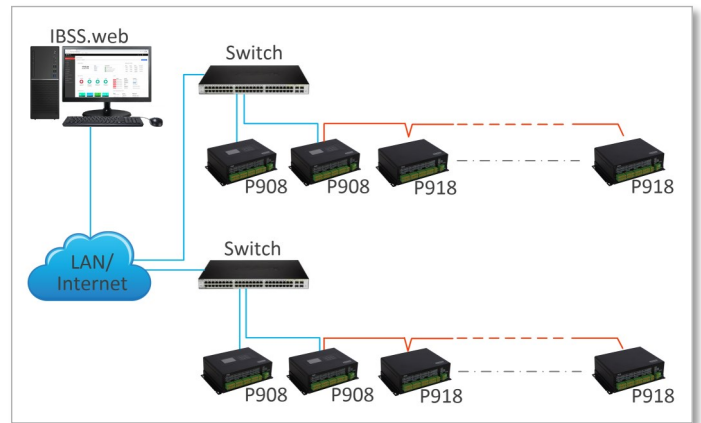
Standalone IP Controller with Reader Modules Configuration



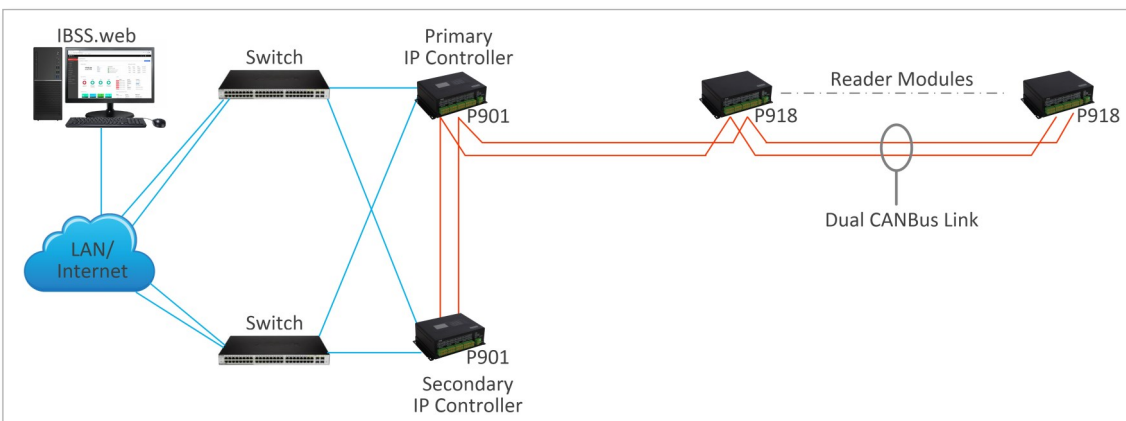
IBSS.web Hosted Multi IP Controller



IBSS.web Hosted Multi IP Controller with Reader Modules



IBSS.web Hosted Multi Redundancy IP Controller



KEY:

- Ethernet
- RS485
- Wiegand
- CAN Bus
- Sensor
- DC Power

System Benefits



Modular Architecture

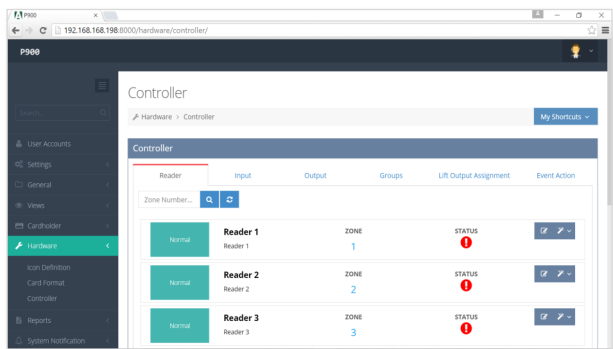
The most basic access control system is made up of an IP controller, P908 or P904 for 8- or 4-door access control. The IP controller can be expanded with up to 3 units of P918/P914 modules respectively via CAN bus to support additional doors.

P920 (32 inputs) and P930 (32 relays) I/O modules can be added for monitoring and intrusion functions. Each IP controller supports up to 4 I/O modules.

Navigation

The Navikey is an interactive user interface that is found on to the master controller. Configuration and diagnostics information is easy accessed from the LCD display.

A built-in NFC reader makes enrolling card IDs highly convenient and fuss-free.



Browser UI

The fully HTML5 compliant web browser is truly platform independent and easy to use. Authorized users can log in using IE, Chrome, Android or iOS.

System setup, diagnostics, database configuration, floorplans and reporting are all available with a simple browser log in without any need to install software.

Reader Support

The P900 controller is designed to be highly versatile and has built-in multi interface support for readers.

The RS485 interface ensures robust and secured data transmission with field proven ADNET communication protocol.

OSDP (Open Supervised Device Protocol) is available with the RS485 interface and suitable for connection to any OSDP reader.

Clex protocol allows for seamless connection to wireless eLock including electronics cylinder lock, electronics door handle & electronics cabinet lock.

Traditional Wiegand readers can also connect to the P900 controller.

System Benefits



Floorplan with Real-time Status Icons

The P900 web server has up to 5 user configurable floorplans with the real-time status icon of every device.

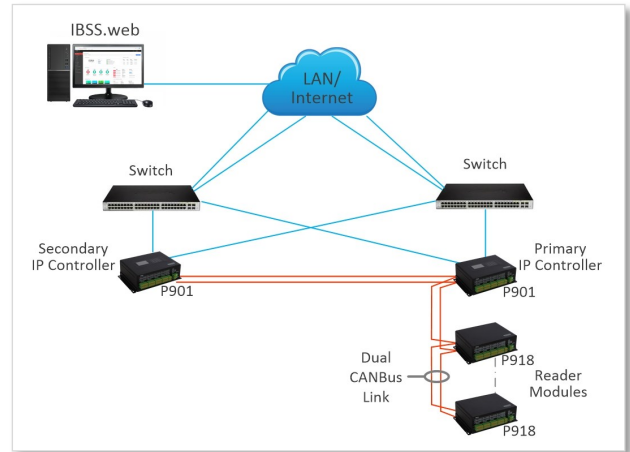
Reader, input and output device's icon can be placed in a floorplan based on the actual installation and show blinking animation whenever alarm event occurs. The online control and alarm management can be done directly from the floorplan.



IBSS.web Enterprise Security Management System

Two or more units of connected P900 controllers can be managed by the IBSS.web, a true enterprise Security Management System (SMS) software.

The IBSS.web is built on modern IT infrastructure, making it highly scalable and easy to interconnect with other applications which are often required in large scale user environments.



Highly Resilient System Design

The architecture of the P900 controller provides for a highly resilient system to ensure high availability. Two units of the P901 can be configured as primary and secondary IP controllers. The secondary IP controller constantly monitors the heartbeat of the primary controller while continuously synchronizing its database for automatic take over upon failure of the primary IP controller.

With 2 Gigabit Ethernet ports, data communication between the P900 controller(s) and the host server computer is extremely reliable. In addition to network redundancy, every P900 module comes with 2 independent CAN bus ports for redundancy module to module communications link.

No SPOF (Single Point of Failure) design takes care of master controller failover, ensuring smooth and trouble free operations.



Encryption SAM

Encryption is key to any highly Secure access control solution. The P900 controller is capable of 128 bit AES or 3DES encryption. A SAM (Secure Access Module) slot is available on board for SAM insertion in ISO/IEC 7810 ID-0 format (2FF form factor, mini SIM size).

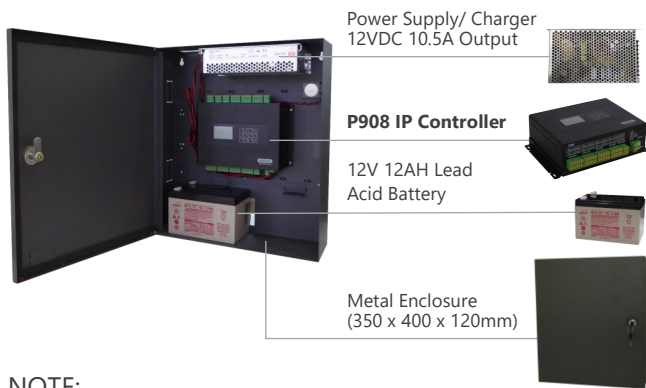
Technical Specifications

Specifications*	P901	P904	P908	P914	P918	P920	P930
Description	WebENTRA Professional Redundant IP Controller	WebENTRA Professional 4-Door IP Controller	WebENTRA Professional 8-Door IP Controller	WebENTRA Professional 4-Door Reader Module	WebENTRA Professional 8-Door Reader Module	WebENTRA Professional Input Module	WebENTRA Professional Output Module
Ethernet Host Link	2x Gigabit (ETH1, ETH2-Opt)			-	-	-	-
Web Browser Connections	10	10	10	-	-	-	-
CAN Bus	2						
Max Door per Module	0	4	8	4	8	-	-
Max Modules	3x P914/P918; 4x P920/P930			-	-	-	-
Navikey	Yes	No	Yes	-	-	-	-
Encryption SAM Support	Yes			-	-	-	-
InstaStart	Yes			-	-	-	-
DC Power Supply	12V, 1A			12V, 0.5A			
Supported Protocol	-	ADNET / OSDP (19200bps) / Clex / Wiegand	ADNET / OSDP (19200bps) / Clex / Wiegand	ADNET / OSDP (19200bps) / Clex / Wiegand	ADNET / OSDP (19200bps) / Clex / Wiegand	-	-
RS485 (Device)	No	Yes, 8 Readers Max (ADNET, OSDP & Clex)	Yes, 16 Readers Max (ADNET, OSDP & Clex)	Yes, 8 Readers Max (ADNET, OSDP & Clex)	Yes, 16 Readers Max (ADNET, OSDP & Clex)	No	No
Wiegand Ports	-	4	8	4	8	-	-
Alarm Input/ Relay Output	-	12/4	24/12	16/4	24/12	32/8	8/32
Input State	-	2 or 4 states, configurable					
Relay Contact Rating	-	12V 2A max					
Card IDs	150,000			-	-	-	-
Event Buffers	2,500,000			-	-	-	-
DC Power Supply	12V						
Max. Current (excluding locks)	1A			0.5A			
Operating Temperature	0 - 50°C						
Humidity	90%						
Dimensions	203 x 133 x 63 mm						
Weight	1 Kg			0.8 Kg			
Certifications	CE & FCC						

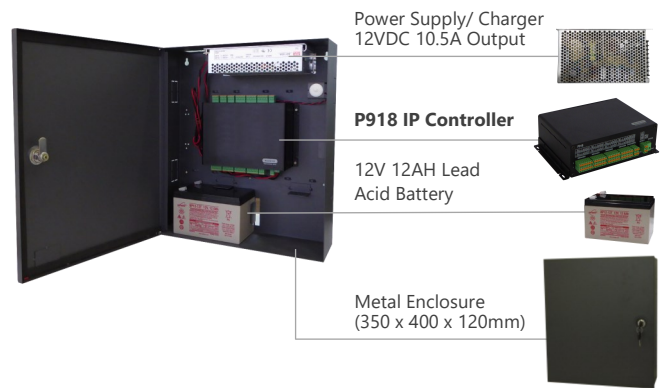
*Specifications are subject to change without prior notice

Package Options

P908K1 WebENTRA Professional P908 Package K1



P918K1 WebENTRA Professional P918 Package K1



NOTE:

a) 1x additional Lead Acid Battery (7AH/ 12AH) can be added for additional battery backup.

Ordering Information

Model No.	Description
P901	WebENTRA Professional Redundant IP Controller - built-in dual Ethernet - with NAVIKEY
P904	WebENTRA Professional 4-Door IP Controller - support 8x Readers with RS485 or 4x Readers with Wiegand - 12 Inputs and 4 Relay Outputs
P908	WebENTRA Professional 8-Door IP Controller - supports 16x Readers with RS485 or 8x Readers with Wiegand - 24 Inputs and 12 Relay Outputs - with NAVIKEY
P914	WebENTRA Professional 4 Door Reader Module - supports 8x Readers with RS485 or 4x Readers with Wiegand - 16 Inputs and 4 Relay Outputs
P918	WebENTRA Professional 8 Door Reader Module - supports up to 16x Readers with RS485 or 8x Readers with Wiegand - 24 Inputs and 12 Relay Outputs
P920	WebENTRA Professional Input Module - supports 32x input, 8x output
P930	WebENTRA Professional Output Module - supports 8x input, 32x output
P901K1	WebENTRA Professional P901 Package K1 - includes P901, APC-155, ABT12AH, AET300
P904K1	WebENTRA Professional P904 Package K1 - includes P904, APC-155, ABT12AH, AET300
P908K1	WebENTRA Professional P908 Package K1 - includes P908, APC-155, ABT12AH, AET300
P914K1	WebENTRA Professional P914 Package K1 - includes P914, APC-155, ABT12AH, AET300
P918K1	WebENTRA Professional P918 Package K1 - includes P918, APC-155, ABT12AH, AET300
P920K1	WebENTRA Professional P920 Package K1 - includes P920, APC-155, ABT12AH, AET300
P930K1	WebENTRA Professional P930 Package K1 - includes P930, APC-155, ABT12AH, AET300
Accessories	
APC-155	10.5A PSU/Charger 12VDC Output
ABT7AH	12V 7AH Lead Acid Battery
ABT12AH	12V 12AH Lead Acid Battery
P900ETH2	WebENTRA P900 Ethernet Port 2
AET300	WebENTRA Wall Mount Metal Enclosure (350x400x120mm)