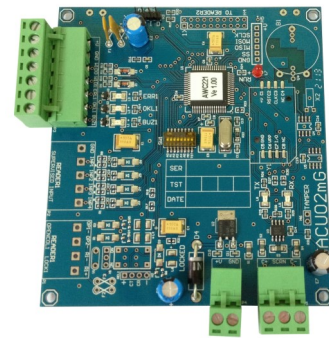


The **ACW02M** is a dual function signal converter for the following:

- Convert any Card Reader with Wiegand interface to RS485 interface
- Convert any Barcode reader with RS232 interface to RS485 interface

ACW02M enables 3rd party Wiegand or Barcode readers to connect to ASIS Technologies access controllers via RS485.



Key Features

- Dual function interface module
- Extends communication distance by 1000km
- Multi-drop topology reduces cabling cost
- Supports any barcode reader with RS232 interface
- Easy to troubleshoot and maintain
- Less susceptible to noise

Schematic Diagram



Technical Specifications

Specifications*	ACW02M
Description	Wiegand/Barcode to RS485 Converter
Power Consumption	12VDC
Input	Wiegand/ Barcode
Output	RS485
Wiegand Supported Formats	26bit, 32bit, 34bit, 37bit, 40bit, 56bit, 58bit, 64bit, 80bit (4 digit PIN, Proxpro Compatible)
Barcode Formats	Standard Mode — reads barcode numeric digits Secure Mode—reads numeric digits with digital signature

*Specifications are subjected to changes without prior notice

Ordering Information

Model No.	Description
ACW02M	Wiegand/ Barcode to RS485 Converter