

ABOUT US

SUZUKA® Malaysia belongs to the SUZUKA® Group, which holds manufacturing companies in Taiwan, Malaysia, and Thailand. As one of South East Asia's leading manufacturers in decorative building materials, SUZUKA® Malaysia's expertise in wall finishes dates back to its origins in the town of Suzuka, Japan, after World War II. Specializing in a wide range of stone veneers, waterproofing materials, and textured coatings, we offer durable products that are suitable for decorating and protecting both the interiors and exteriors of your homes and commercial buildings.

Not only do our products cater to buildings of various aesthetics and designs, but they also exceed international quality and safety standards. Armed with protection against UV damage, water seepage, dust, dirt and stains, we lower potential maintenance costs in the future. In addition to being an ISO 9001 certified company, we also carry a selection of SIRIM QAS certified products and a range of environmentally-friendly products certified by Singapore Green Label and SIRIM Eco Label.

Within the past decade, we've become an international supplier to number of regions, including Australia, Saudi Arabia, Thailand, Cambodia, Qatar, the United Arab Emirates, Bahrain, Indonesia, Singapore, and West Africa.

To experience why SUZUKA® products are trusted around the world, choose from our extensive range of coatings and artificial stone veneers.



TAIWAN • MALAYSIA • THAILAND

OTHER SUZUKA® PRODUCTS

• Textured Coating

• Brick Veneer

• Artificial Stone Veneer

• Exposed Concrete Effect



• Interior Textured Paint



• Trowel Pebble Stone Coating



• Kastpanel



Join our photo contest to win RM1,000*

*Terms and Conditions Apply

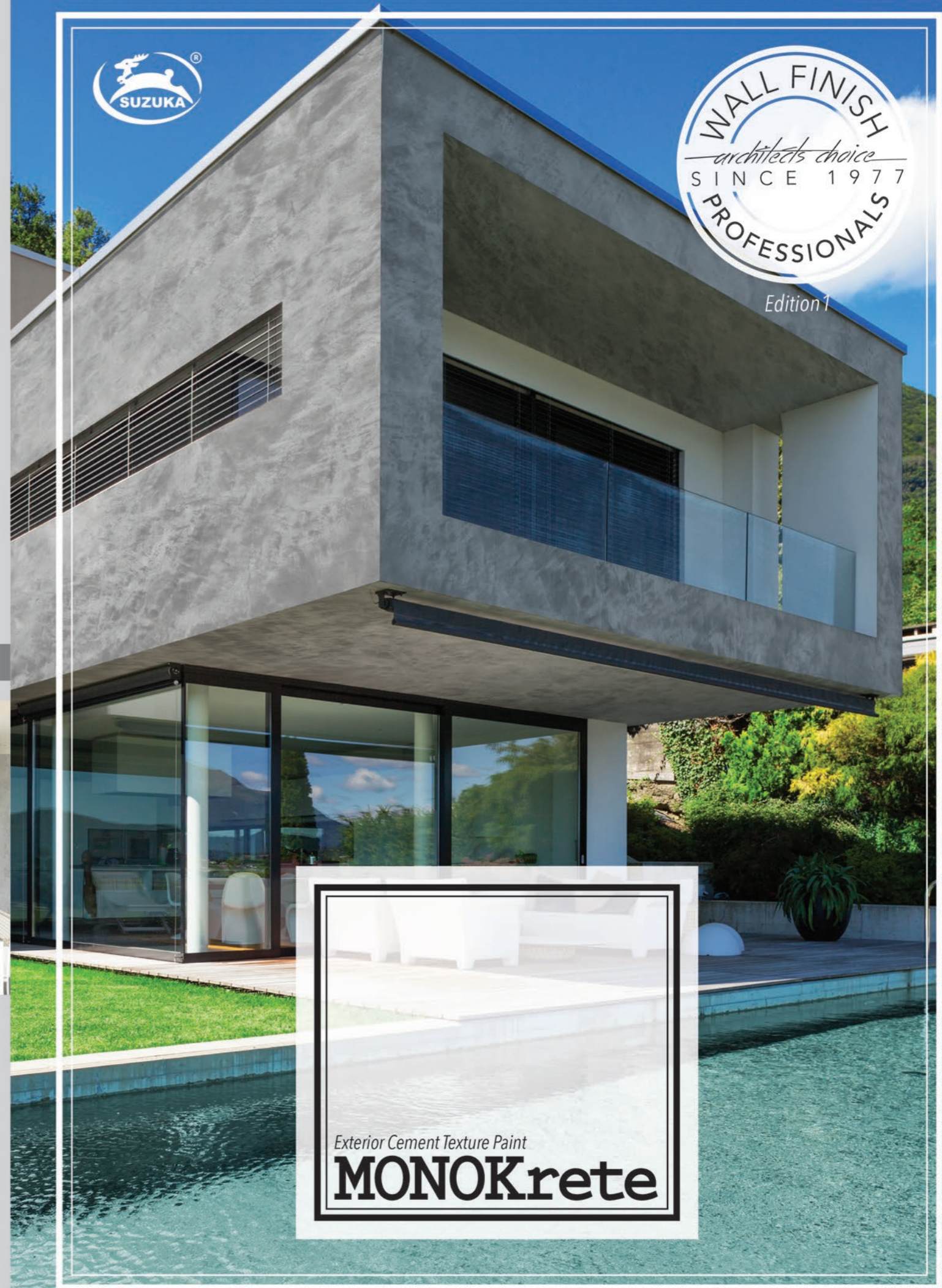
Details at: www.suzuka.com.my/promotion/



www.suzuka.com.my
Hotline: 6012-3595 677



Edition 1



Exterior Cement Texture Paint
MONOKrete

Exterior Cement Texture Paint
MONOKrete



MONOKrete

Exterior Cement Texture Paint

Polished. Sleek. Refined.

Create that everlasting look with our MONOKrete Texture Paint. Whether you are going for the industrial, scandinavian, contemporary or minimalistic style, MONOKrete can complete the look.



SILVER GREY / MCT-601



SHARK GREY / MCT-603

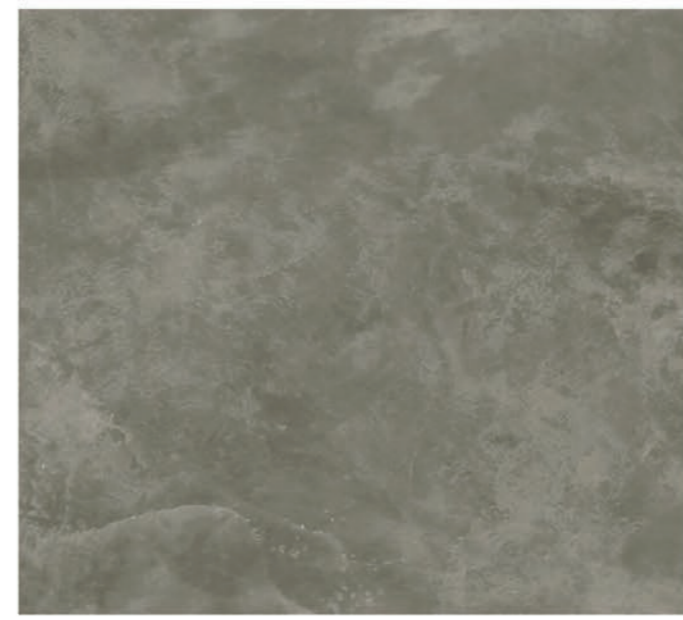


GRANITE GREY / MCT-604

Product Features:

-  **Easy, Quick Application**
-  **Green Choice Water Based & Eco-Friendly**
-  **Formaldehyde & Lead Free**
-  **Low VOC & Odor**
-  **Anti-Chalking & Efflorescence**
-  **Easy Maintenance**
-  **Matte Finishing**
-  **Easy to Touch Up**
-  **For Exterior and Interior**

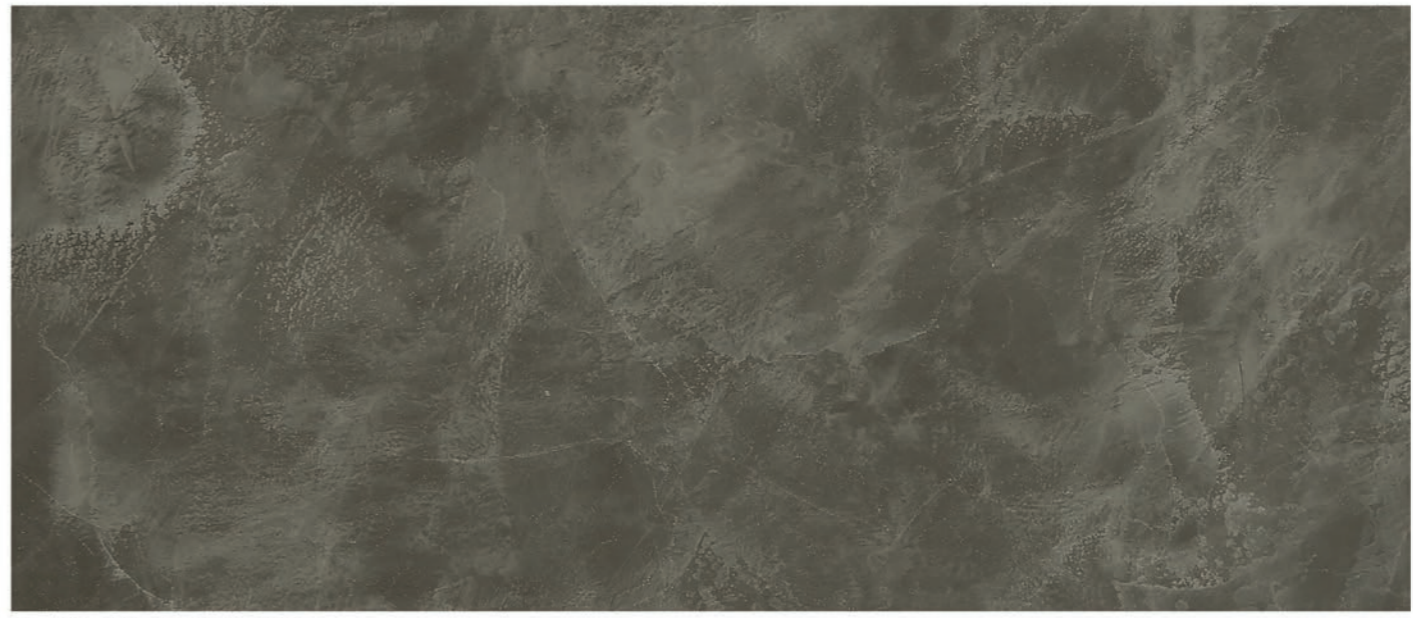
**may vary in color due to lighting condition and printing : we suggest you examine actual product samples before ordering.*



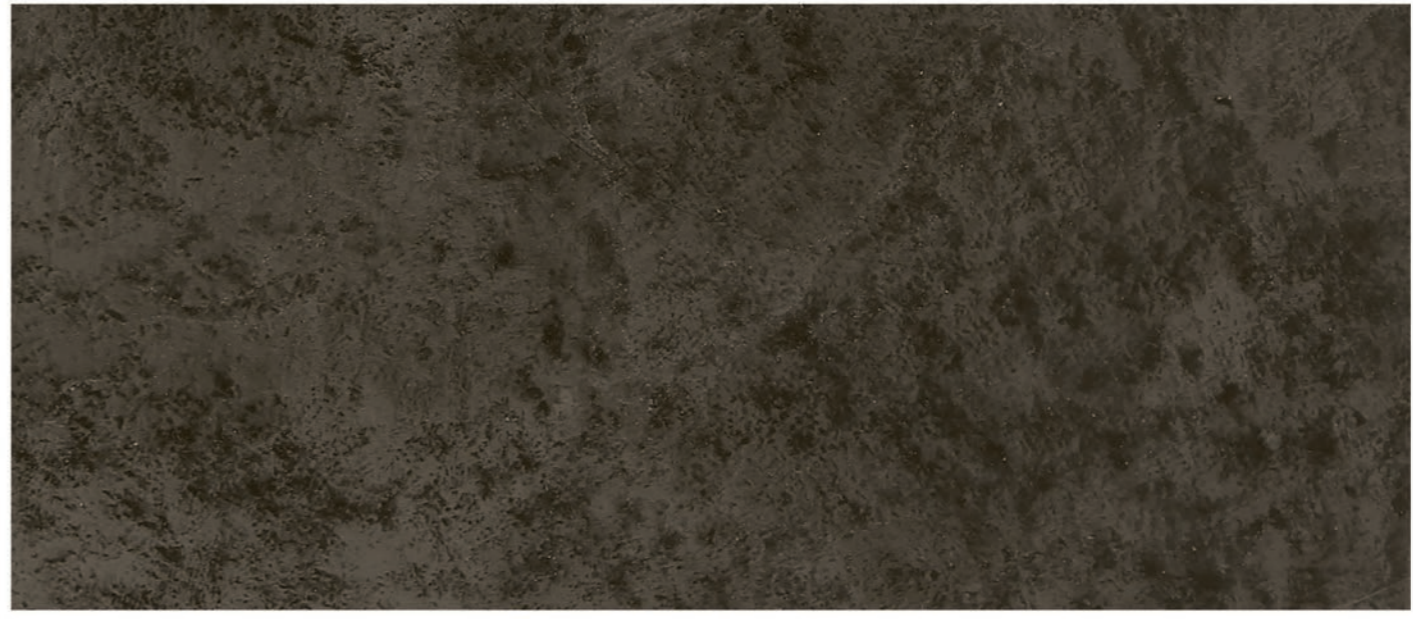
IRON GREY / MCT-605



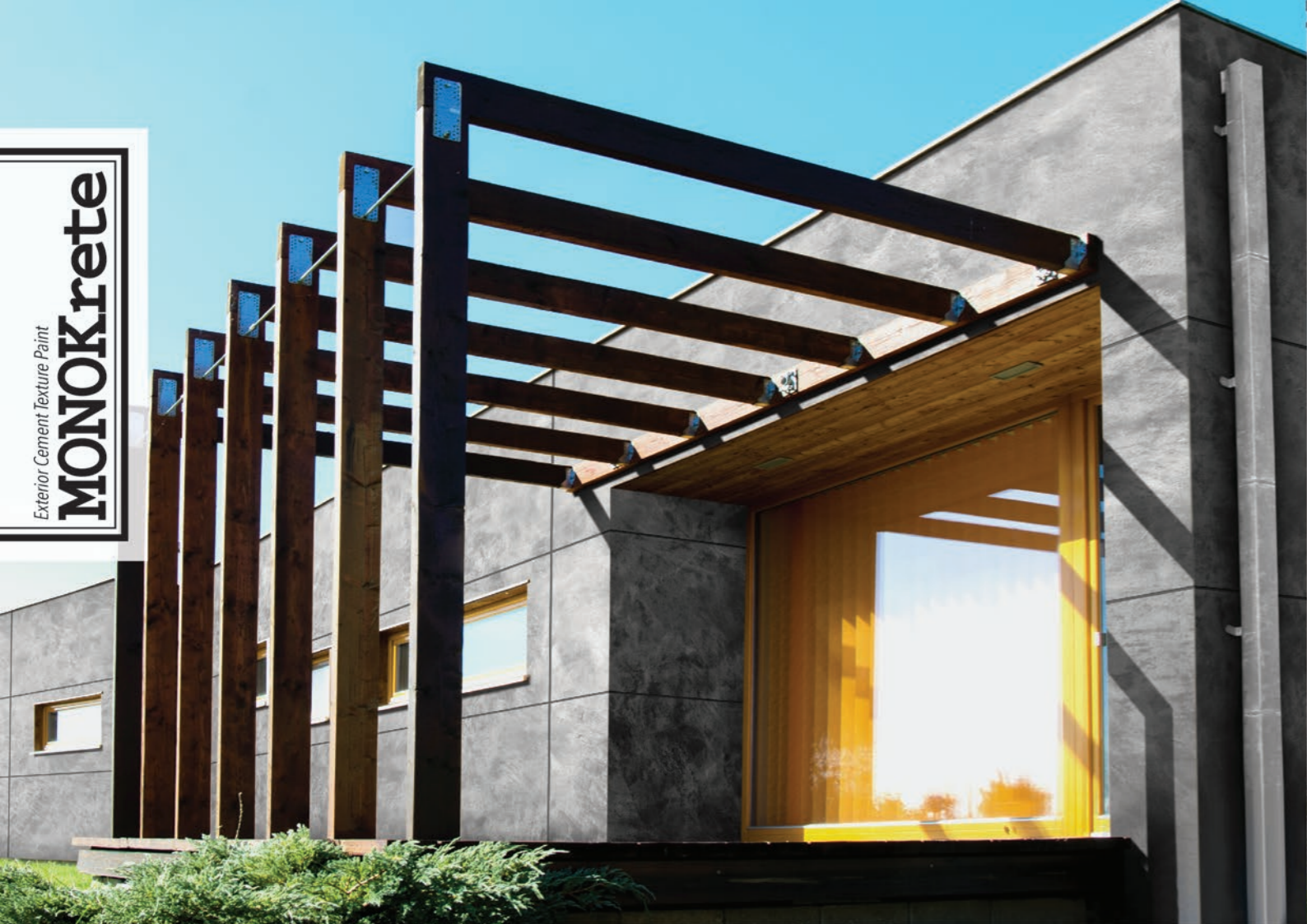
CHARCOAL GREY / MCT-606



METAL GREY / MCT-607



SHADOW GREY / MCT-608



Exterior Cement Texture Paint
MONOKrete



Packing Data & Coverage

PACKING DATA : 1 Liter MONOKrete Primer
1 Liter MONOKrete Texture Coat
0.8 Liter Topcoat (MCT-Top 5)

COVERAGE : 6-7m² per set



Applications Technique:

Surface requirement: smooth, flat and clean.

- 1. PRIMER:**
Tool: Roller
 Roll 2 layers of MONOKrete Primer on the entire surface. Allow 30 minutes to dry between the layers. (The primer can be diluted with maximum 5% of clean water)
- 2. SANDING:**
Tool: 600 Grit Sand Paper
 Sand the entire surface in circular motion to ensure the surface is smooth.
- 3. TEXTURE COAT:**
Tool: Stainless Steel Trowel
 Scrape MONOKrete Texture Coat randomly to create pattern. Ensure the whole surface area is covered. Apply 2nd layer.
- 4. (OPTIONAL) SANDING:**
Tool: 600 Grit Sand Paper
 Sand the entire surface in circular motion to ensure the surface is smooth.
- 5. TOPCOAT:**
Tool: Roller
 Apply MCT-Top 5 on entire surface. Use semi dry roller to absorb any excess material on the surface to prevent unevenness.

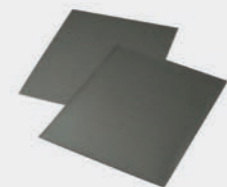


Scan for video demonstration

(Use a larger trowel for a larger pattern, a smaller trowel for a smaller pattern.)

! IMPORTANT:
 * COLOR MAY VARY DEPENDING ON APPLICATION TECHNIQUE & AMOUNT OF MATERIALS USED.

Tools:



Sand Paper (600 Grit)



Roller



Trowel (Stainless Steel)

OR

