



INDICATOR

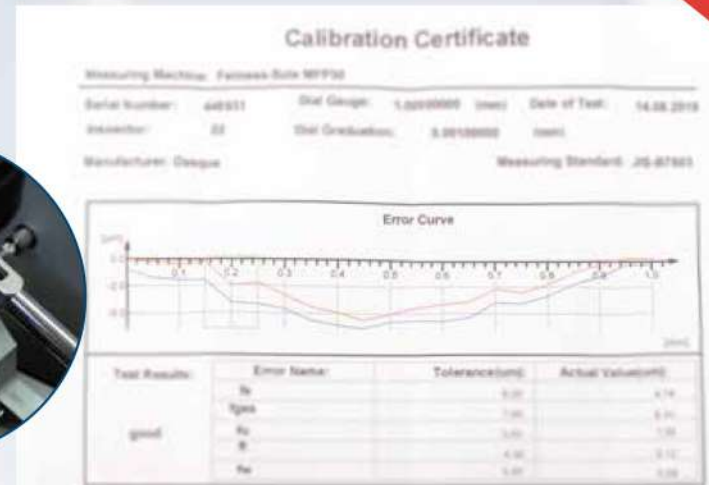
BORN IN ITALY, RAISED BY THE WORLD

DIAL INDICATOR PRIME DIN 878

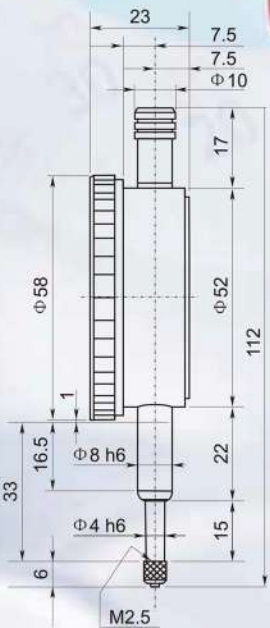
WITH 0.001MM GRADUATION

- Made in Germany
- Used to measure surface flatness, check tool set-up and squareness
- Knurled top screw or lifting cap to raise the plunger easily
- With adjustable limit hands to set tolerance
- O-Ring sealed between inner and outer lid to protect from water or oil

Made in Europe



• Each indicator is with a matched certificate.



Unit:mm

Code	Range	Graduation	Accuracy	Hysteresis	Range/Rev	Reading	Housing Diameter
5181-0005-A	0-1	0.001	0.005	0.002	0.2	0-100-0	φ58



• Double figures in different colors for easy and correct reading

• Measuring rod nearly does not wobble. Both the sleeve reamed hole and measuring rod are very smooth when gripped.





DIAL INDICATOR

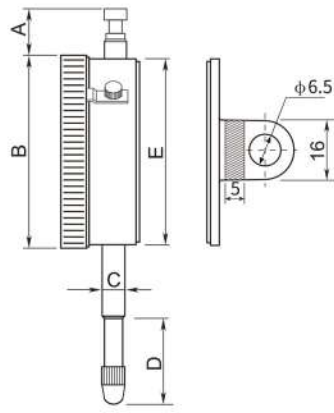
DIN 878



• 5111-0000 Metric Dial indicator



• 5122-4205 Inch Size Dial indicator



• 5111-0000

Code	Range	Graduation	Style	A	B	C	D	E	Accuracy	Hysteresis
5111-0000	0-10	0.01	flat back	10.5	φ58	φ8	20.5	φ53.5	0.017	0.003
5111-1005	0-10	0.01	lug back	10.5	φ58	φ8	20.5	φ53.5	0.017	0.003

Unit:mm

INCH SIZE DIAL INDICATOR

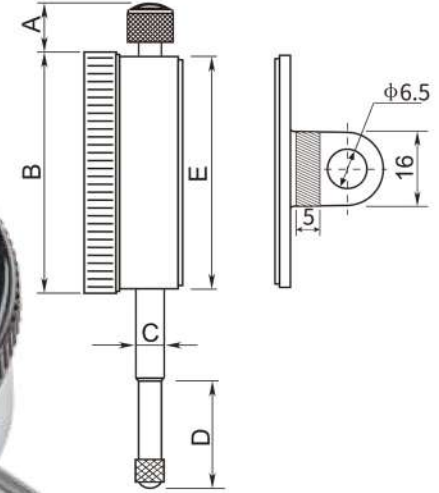
Unit:mm

Code	Range	Graduation	Style	Protection Standard
5122-4205	0-0.5"	0.0005"	lug back	No Jeweled Bearing
5122-4225	0-0.5"	0.0005"	lug back	Jeweled Bearing
5122-4210	0-1"	0.001"	lug back	No Jeweled Bearing
5122-4220	0-1"	0.001"	lug back	Jeweled Bearing
5122-4230	0-1"	0.0005"	lug back	No Jeweled Bearing
5122-4235	0-1"	0.0005"	lug back	Jeweled Bearing
5122-4214	0-2"	0.001"	lug back	No Jeweled Bearing
5122-4215	0-2"	0.001"	lug back	Jeweled Bearing

DIAL INDICATOR

WITH CALIBRATION CERTIFICATE

DIN 878



- Used to measure surface flatness as well as axial runout and also used to check tool set up and squareness
- Limit indicator clips included
- Strictly made in accordance with DIN878
- Jeweled bearings providing the lowest possible bearing friction
- With narrowed range and higher accuracy

Unit:mm

Code	Range	Graduation	Style	A	B	C	D	E	Accuracy	Hysteresis
5111-1105	0-10	0.01	flat back	8	φ58	φ8	18.5	φ55	0.017	0.003
5111-1205	0-10	0.01	lug back	8	φ58	φ8	18.5	φ55	0.017	0.003

DIAL INDICATOR

SHOCK-PROOF



DIN 878

WITH SHOCK RESISTANT ABILITY

Unit:mm

Code	Range	Graduation	Style	A	B	C	D	L	Accuracy	Hysteresis
5121-1105	0-10	0.01	Flat back	8	φ58	φ8	18.5	φ55	0.017	0.003
5121-1205	0-10	0.01	Lug back	8	φ58	φ8	18.5	φ55	0.017	0.003

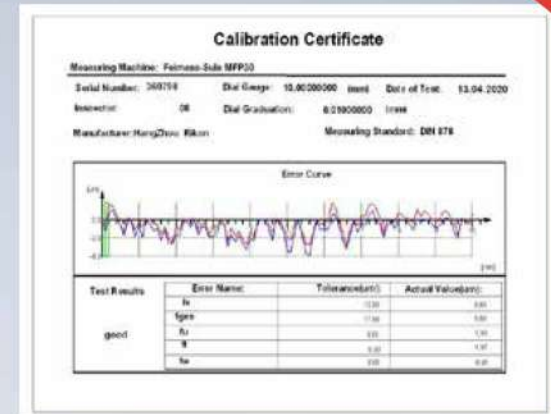


- Jeweled bearing can reduce the friction, making higher sensitivity and quick response ability.

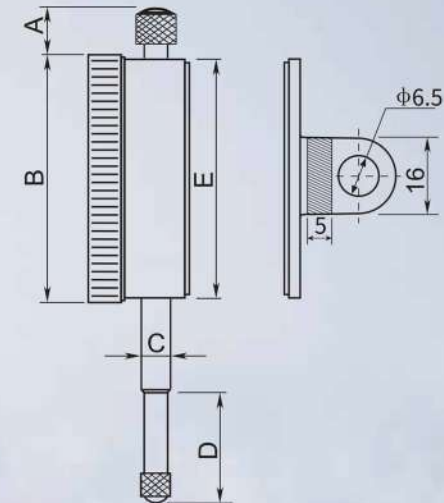
- Oxidation treatment has been given on gear, rack, clamping piece and clamping plate.



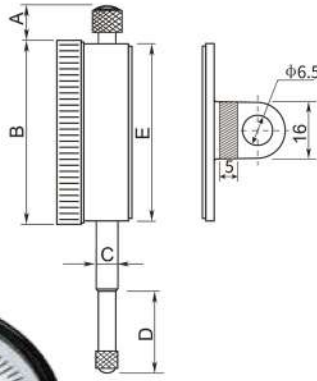
- Measuring rod nearly does not wobble. Both the sleeve reamed hole and measuring rod are very smooth when gripped.



Each indicator is with a matched certificate



MINI DIAL INDICATOR

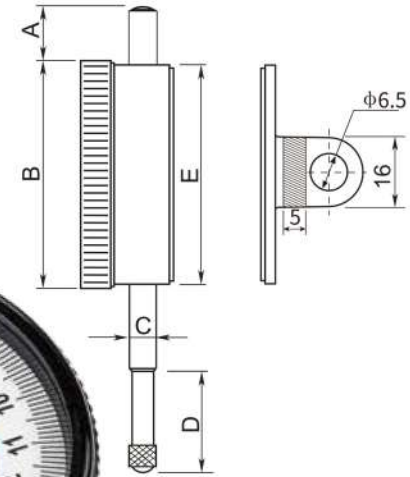


- With calibration certificate
- Used to measure surface flatness as well as axial runout and also used to check tool set up and squareness
- Limit indicator clips included
- Strictly made in accordance with DIN878
- Jeweled bearings providing the lowest possible bearing friction
- With narrowed range and higher accuracy

Unit:mm

Code	Range	Graduation	Style	A	B	C	D	E	Accuracy	Hysteresis
5121-1101	0-3	0.01	flat back	6.5	φ40	φ8	10.6	φ36	0.012	0.003
5121-1201	0-3	0.01	lug back	6.5	φ40	φ8	10.6	φ36	0.012	0.003
5121-1102	0-5	0.01	flat back	6.5	φ40	φ8	12.5	φ36	0.014	0.003
5121-1202	0-5	0.01	lug back	6.5	φ40	φ8	12.5	φ36	0.014	0.003

DIAL INDICATOR WITH 0.001MM GRADUATION



- With calibration certificate
- Used to measure surface flatness as well as axial runout and also used to check tool set up and squareness
- Limit indicator clips included
- Strictly made in accordance with DIN878
- Jeweled bearings providing the lowest possible bearing friction
- With narrowed range and higher accuracy

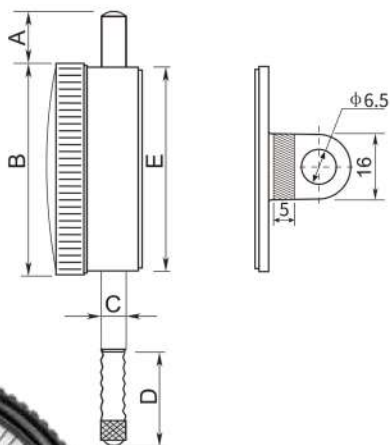
Unit:mm

Code	Range	Graduation	Style	A	B	C	D	E	Accuracy	Hysteresis
5121-2101	0-1	0.001	flat back	13	φ58	φ8	12	φ55	0.005	0.002
5121-2201	0-1	0.001	lug back	13	φ58	φ8	12	φ55	0.005	0.002



WATER PROOF INDICATOR

DIN 878 SHOCK-PROOF Water proof



- Used to measure surface flatness as well as axial runout and also used to check tool set up and squareness
- Strictly made in accordance with DIN878
- O-ring seal on safety cap for bezel and rotating dial
- Hardened gears-lasting against indicator failure due to shock or wear

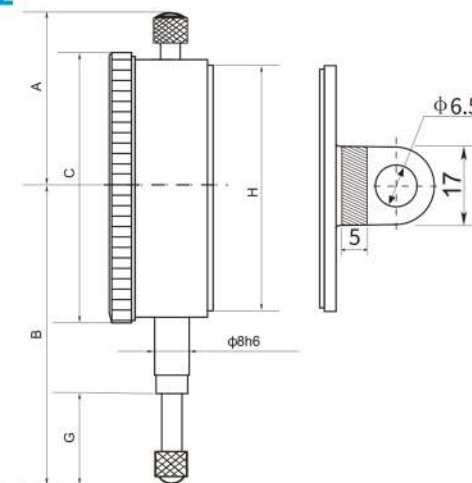
Unit:mm

Code	Range	Graduation	Style	A	B	C	D	E	Accuracy	Hysteresis	Protection Standard
5121-1106	0-10	0.01	flat back	16.5	φ58	φ8	27	φ53.5	0.017	0.003	IP54
5121-1107	0-10	0.01	lug back	16.5	φ58	φ8	27	φ53.5	0.017	0.003	IP54
5121-2106	0-1	0.001	flat back	10.5	φ63	φ8	21	φ55	0.005	0.002	IP67 Jeweled
5121-2107	0-1	0.001	lug back	10.5	φ63	φ8	21	φ55	0.005	0.002	IP67 Jeweled

DIAL INDICATOR

WITH LARGE MEASURING RANGE

DIN 878



- Used for long stroke measurement
- Limit indicator clips included
- Strictly made in accordance with DIN878
- Jeweled bearings providing the lowest possible bearing friction
- With larger range than normal indicators

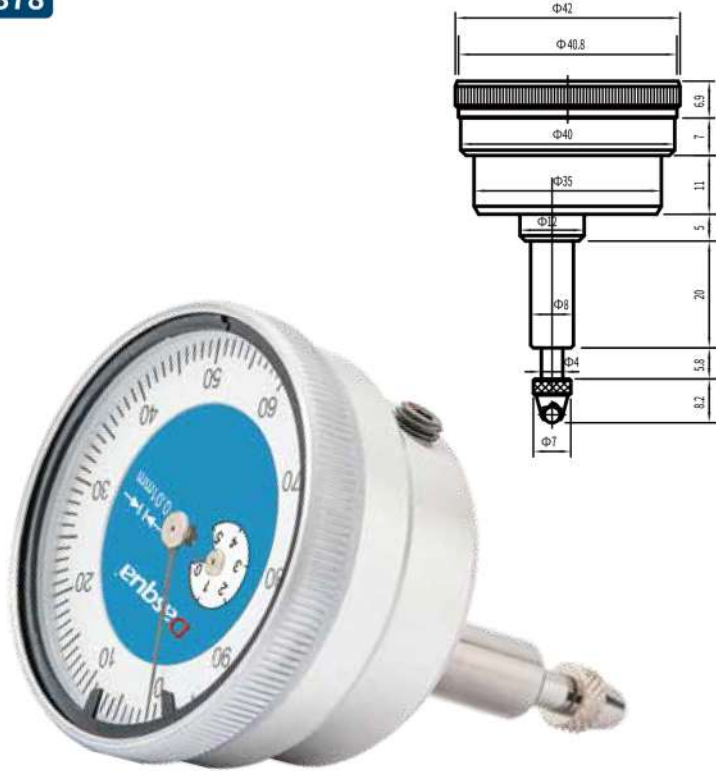
Unit:mm

Code	Range	Graduation	Style	A	B	C	G	H	Accuracy	Hysteresis	Protection Standard
5131-4405	0-25	0.01	flat back	37.5	80.5	φ58	34	φ53.5	0.035	0.007	No Jeweled Bearing
5132-7105	0-25	0.01	lug back	37.5	80.5	φ58	34	φ53.5	0.035	0.007	No Jeweled Bearing
5141-1105	0-30	0.01	flat back	37.5	89.5	φ58	40.9	φ53.5	0.035	0.007	No Jeweled Bearing
5141-2105	0-30	0.01	lug back	37.5	89.5	φ58	40.9	φ53.5	0.035	0.007	No Jeweled Bearing
5121-1110	0-30	0.01	flat back	37.5	89.5	φ58	40.9	φ53.5	0.035	0.007	Jeweled Bearing
5121-1210	0-30	0.01	lug back	37.5	89.5	φ58	40.9	φ53.5	0.035	0.007	Jeweled Bearing
5121-1115	0-50	0.01	flat back	108.3	126.2	φ58	57.7	φ53.5	0.04	0.008	Jeweled Bearing
5121-1215	0-50	0.01	lug back	108.3	126.2	φ58	57.7	φ53.5	0.04	0.008	Jeweled Bearing
5121-1125	0-80	0.01	flat back	138.4	168.4	φ58	88	φ53.5	0.05	0.009	Jeweled Bearing
5121-1225	0-80	0.01	lug back	138.4	168.4	φ58	88	φ53.5	0.05	0.009	Jeweled Bearing
5121-1120	0-100	0.01	flat back	167.6	207.8	φ78	108	φ69	0.05	0.009	Jeweled Bearing
5121-1220	0-100	0.01	lug back	167.6	207.8	φ78	108	φ69	0.05	0.009	Jeweled Bearing



BACK PLUNGER DIAL INDICATOR

DIN 878

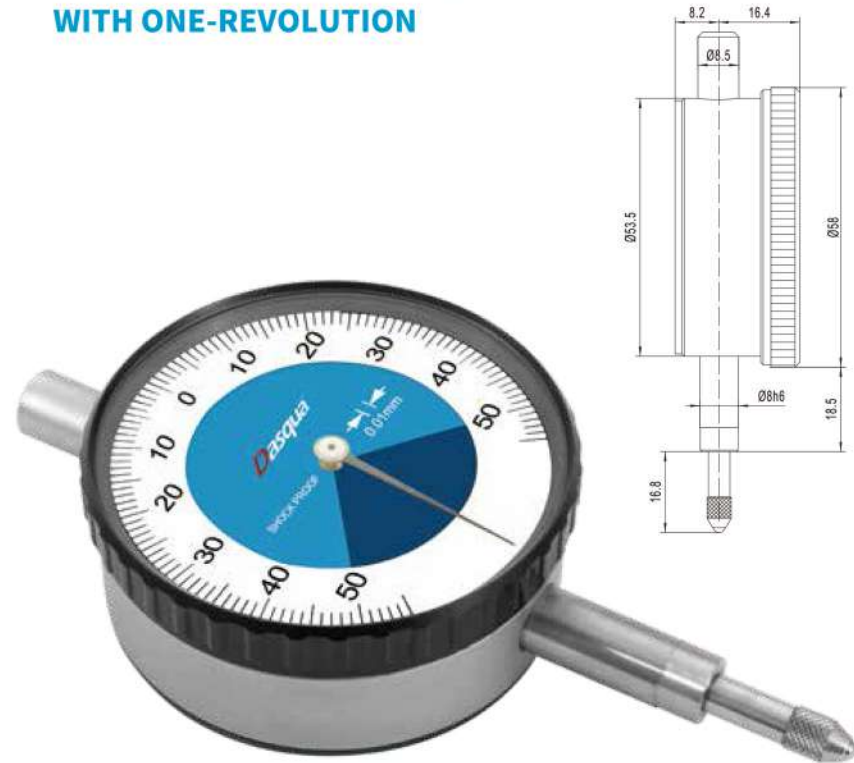


- Strictly made in accordance with DIN 878
- Used to measure surface flatness as well as axial runout and also used to check tool set up and squareness in small spaces where the standard dial indicators are difficult to see
- Limit indicator clips included

Unit:mm

Code	Range	Graduation
5271-0005	0-5	0.01

DIAL INDICATOR WITH ONE-REVOLUTION

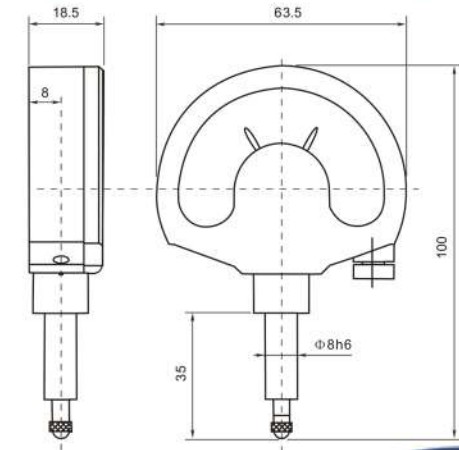


- Unlike many other dial indicators, the one revolution dial indicator literally shows the entire spindle travel or range as one sweep of the hand, eliminating the possibility of reading errors due to miscounting the multiple revolutions
- With one-revolution dial indicators, "within tolerance" and "out-of tolerance" can never misinterpreted
- An unique shock-proof mechanism is incorporated, providing improved immunity to shock due to sudden spindle retraction caused by high impact

Unit:mm

Code	Range	Graduation	Style
5351-0005	±0.25	0.01	flat back
5351-2105	±0.25	0.01	lug back
5351-0010	±0.5	0.01	flat back
5351-2110	±0.5	0.01	lug back

COMPARATOR GAUGE



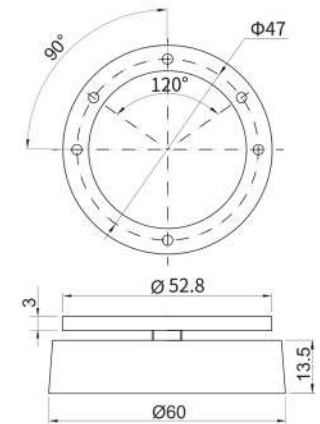
- IP53 protection against liquid
- With shockproof ability
- To check parallelism, smoothness and through running
- Sturdy metal housing with sturdy plastic cover
- Stem and spindle hardened and lapped
- Adjustable tolerance fingers
- With spindle lifting cable

Unit:mm

Code	Range	Graduation
5361-0005	±0.05	0.001
5361-0010	±0.002"	0.0005"

DIAL INDICATOR

WITH MAGNETIC LUG BACK



- Permanent powerful magnet
- Fitting for all dial indicator
- Magnet screws off
- Magnetic force: 20kg

● 5111-1010 Unit:mm

Code	Covering	Range	Graduation
5111-1010	/	/	/
5111-0001	5111-1010	/	/
	5111-0000	0-10	0.01
5122-4211	5111-1010	/	/
	5122-4210	0-1"	0.001"

MULTIFUNCTIONAL DIGITAL INDICATOR

WITH TOLERANCE ALARM



- Glass grating for high accuracy and stable performance



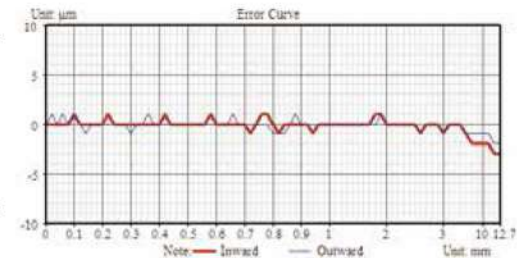
Unit: mm

Code	Range	Resolution	Accuracy
5260-3705	0-12.7/0-0.5"	0.01/0.0005"	0.02
5260-3710	0-25.4/0-1.0"	0.01/0.0005"	0.02
5260-3715	0-50.8/0-2.0"	0.01/0.0005"	0.02
5260-3720	0-101.6/0-4"	0.01/0.0005"	0.02

Digital Indicator Certificate

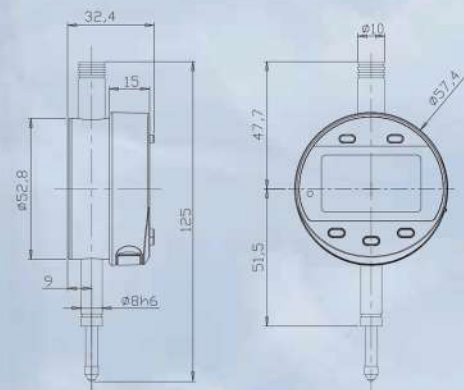
Product Name: Digital Indicator Name of Inspection Standard: Factory Standard
 Part No.: Unit: mm
 Serial No.: 20A1351 Scale Interval: 0.01mm
 Date of Inspection: 2020-04-16 Measuring Range: (0~12.7)mm
 Temperature: 20°C Reference Point: 0mm
 Inspector: End Point: (0~12.7)mm

Inspection Item Name: Judgment
 Inspection of Function and Appearance: **Pass**



Each indicator is with a matched certificate.

- Housing entirely cast made of high-strength alloy aluminum guaranteeing low deformation



• 5260-3705

- The functions of tolerance set and tolerance alarm are optional. Alarm light is available for quick-checking whether products' sizes qualified or not.



- Temperature and humidity test for each product, ensuring the normal use of each in harsh environment





DIGITAL INDICATOR

mm/in Battery + CR2032 Data output



- Calibration certificate provided with total forward error, hysteresis error, total error and deviation error on it
- Watchcase made of high-strength aluminum alloy guaranteeing low deformation
- Glass grating for high accuracy and stable performance
- Temperature and humidity test for each product, ensuring the normal use of each in harsh environment
- Copper sleeve and rod precisely ground to reduce shaking
- The functions of tolerance set and tolerance alarm are optional. Alarm light is also available for quick-checking products' tolerance

Unit:mm

Code	Range	Resolution	Accuracy
5260-1105	0-12.7/0-0.5"	0.01/0.0005"	0.02
5260-1110	0-25.4/0-1.0"	0.01/0.0005"	0.02
5260-1115	0-50.8/0-2.0"	0.01/0.0005"	0.02
5260-1120	0-101.6/0-4"	0.01/0.0005"	0.02

DIGITAL INDICATOR

WITH 0.001MM RESOLUTION AND TOLERANCE ALARM

mm/in Battery + CR2032 Data output



- Calibration certificate provided with total forward error, hysteresis error, total error and deviation error on it
- Watchcase made of high-strength aluminum alloy guaranteeing low deformation
- Glass grating for high accuracy and stable performance
- Temperature and humidity test for each product, ensuring the normal use of each in harsh environment
- Copper sleeve and rod precisely ground to reduce shaking
- The functions of tolerance set and tolerance alarm are optional. Alarm light is also available for quick-checking products' tolerance

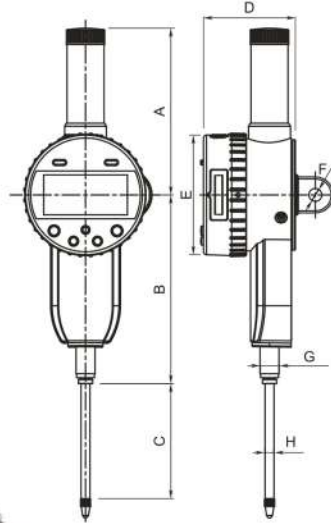
Unit:mm

Code	Range	Resolution	Accuracy
5260-4205	0-12.7/0-0.5"	0.001/0.00005"	0.004
5260-4210	0-25.4/0-1.0"	0.001/0.00005"	0.005
5260-4215	0-50.8/0-2.0"	0.001/0.00005"	0.006
5260-4220	0-101.6/0-4"	0.001/0.00005"	0.010



DIGITAL INDICATOR

WITH ABSOLUTE FUNCTION



- Wireless system built-in (optional)
- With Absolute-Reference System and no need to set the reference point at every power-on
- Large easy-to-read digital display
- With ABS and Metric/Inch Conversion System
- With long battery-use

Unit:mm

Code	Range	Resolution	A	B	C	D	E	F	G	H	Accuracy
5340-8105	0-12.7/0-0.5"	0.01/0.0005"	60.2	53.8	14.2	40.2	φ60.1	φ6.5	φ8 or 3/8"	φ4.5	0.01/0.0005"
5340-8110	0-25.4/0-1.0"	0.01/0.0005"	55.7	68.8	32.7	46.2	φ61.1	φ6.5	φ8 or 3/8"	φ4.5	0.01/0.0005"
5340-8115	0-50.8/0-2.0"	0.01/0.0005"	83.7	94.8	57.7	46.1	φ61.1	φ6.5	φ8 or 3/8"	φ4.5	0.015/0.001"
5340-9105	0-12.7/0-0.5"	0.001/0.00005"	60.2	53.8	14.2	40.2	φ60.1	φ6.5	φ8 or 3/8"	φ4.5	0.004/0.00016"
5340-9110	0-25.4/0-1.0"	0.001/0.00005"	55.7	68.8	32.7	46.2	φ61.1	φ6.5	φ8 or 3/8"	φ4.5	0.004/0.00016"
5340-9115	0-50.8/0-2.0"	0.001/0.00005"	83.7	94.8	57.7	46.1	φ61.1	φ6.5	φ8 or 3/8"	φ4.5	0.005/0.0002"

WITH ABSOLUTE FUNCTION AND WIRELESS SYSTEM

Unit:mm

Code	Range	Resolution	A	B	C	D	E	F	G	H	Accuracy
5610-1105-A	0-12.7/0-0.5"	0.01/0.0005"	60.2	53.8	14.2	40.2	φ60.1	φ6.5	φ8 or 3/8"	φ4.5	0.01/0.0005"
5610-1110-A	0-25.4/0-1.0"	0.01/0.0005"	55.7	68.8	32.7	46.2	φ61.1	φ6.5	φ8 or 3/8"	φ4.5	0.01/0.0005"
5610-1115-A	0-50.8/0-2.0"	0.01/0.0005"	83.7	94.8	57.7	46.1	φ61.1	φ6.5	φ8 or 3/8"	φ4.5	0.015/0.001"
5610-4105-A	0-12.7/0-0.5"	0.001/0.00005"	60.2	53.8	14.2	40.2	φ60.1	φ6.5	φ8 or 3/8"	φ4.5	0.004/0.00016"
5610-4110-A	0-25.4/0-1.0"	0.001/0.00005"	55.7	68.8	32.7	46.2	φ61.1	φ6.5	φ8 or 3/8"	φ4.5	0.004/0.00016"
5610-4115-A	0-50.8/0-2.0"	0.001/0.00005"	83.7	94.8	57.7	46.1	φ61.1	φ6.5	φ8 or 3/8"	φ4.5	0.005/0.0002"





IP65 DIGITAL INDICATOR

WITH 0.001MM RESOLUTION

IP65
COOLANT & FLUID
RESISTANT
mm
in
Battery
+
CR2032
Data
output



- Inductive measurement system
- IP65 protection against liquid
- Large LCD display with clear reading
- 3V Lithium battery CR2032
- SPC data output
- Tolerance preset and GO/NG judgement
- "+" or "-" direction set

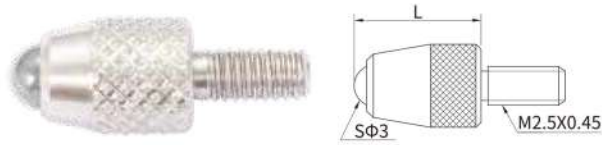
Unit:mm

Code	Range	Resolution	A	B	Accuracy	Repeatability
5820-0005	0-12.7/0-0.5"	0.001/0.00005"	91.9	14.3	0.007/0.0003"	0.003/0.0001"
5820-0010	0-25.4/0-1.0"	0.001/0.00005"	129.2	27	0.008/0.0003"	0.003/0.0001"
5820-0015	0-50.8/0-2.0"	0.001/0.00005"	179.7	52	0.010/0.0004"	0.003/0.0001"
5820-0020	0-101.6/0-4"	0.001/0.00005"	281.8	103.4	0.015/0.0006"	0.003/0.0001"





BALL POINT



Unit:mm

Code	Material of measuring face	L
5221-6101	Carbide	7.3
5221-6103	Ceramic	7.3
5221-6104	Carbide	8.3
5221-6106	Carbide	12.1
5221-6107	Carbide	14
5221-6108	Carbide	15
5221-6109	Ceramic	15
5221-6110	Carbide	17
5221-6111	Carbide	19.3
5221-6112	Carbide	20
5221-6113	Ceramic	20
5221-6114	Carbide	22
5221-6115	Carbide	25
5221-6116	Ceramic	25
5221-6117	Carbide	30
5221-6118	Ceramic	30

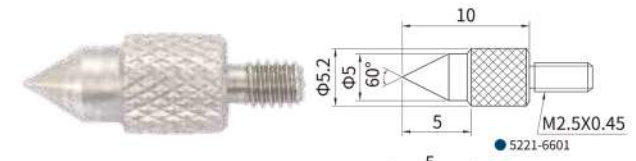
BALL POINT



Unit:mm

Code	Material of measuring face	SΦD
5221-6301	steel	1
5221-6302	carbide	1.5
5221-6303	carbide	1.8
5221-6304	carbide	2.5
5221-6305	carbide	4

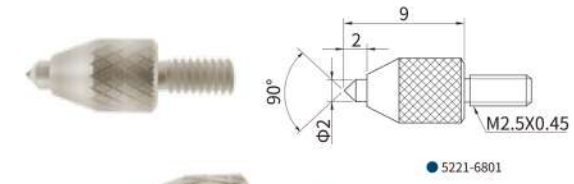
CONICAL POINT



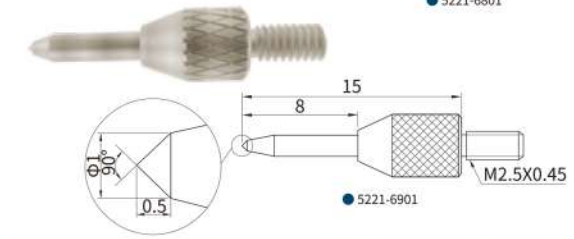
● 5221-6601



● 5221-6701



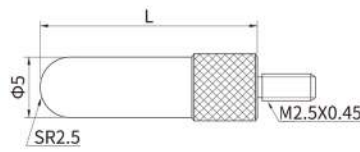
● 5221-6801



● 5221-6901

Code	Material of measuring face
5221-6601	steel
5221-6701	steel
5221-6801	steel
5221-6901	steel

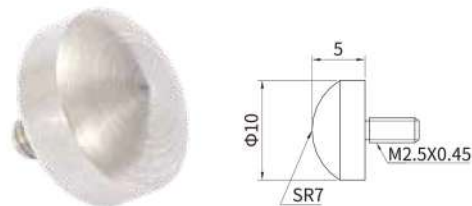
SHELL TYPE POINT



Unit:mm

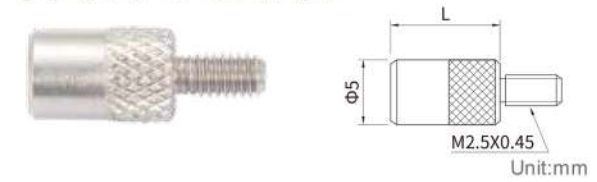
Code	Material of measuring face	L
5221-6202	steel	5
5221-6203	steel	10
5221-6205	steel	15
5221-6207	steel	20
5221-6208	steel	25
5221-6210	steel	30

SPHERICAL POINT



Code	Material of measuring face
5221-6401	steel

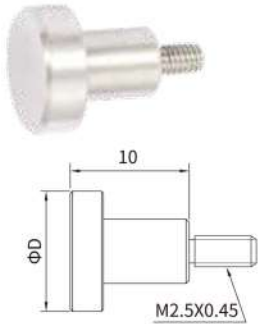
FLAT POINT



Unit:mm

Code	Material of measuring face	L
5221-7101	steel	8
5221-7102	steel	10

FLAT POINT



Unit:mm

Code	Material of measuring face	ϕD
5221-7201	steel	10
5221-7202	steel	15
5221-7203	steel	20
5221-7204	steel	25
5221-7205	steel	30

FLAT POINT



Unit:mm

Code	Material of measuring face
5221-7301	carbide

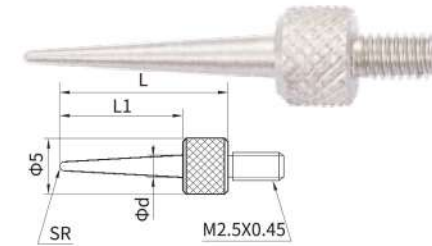
NEEDLE POINT



Unit:mm

Code	Material of measuring face	ϕD	L
5221-7701	steel	0.45	3
5221-7702	steel	0.45	5
5221-7703	carbide	1	3
5221-7704	carbide	1	5
5221-7705	carbide	1	8
5221-7706	carbide	1	10
5221-7707	carbide	1	20
5221-7708	carbide	1	40
5221-7709	carbide	1.5	5
5221-7710	carbide	1.5	10
5221-7711	carbide	1.5	13
5221-7712	carbide	1.5	20
5221-7713	carbide	1.5	40
5221-7714	carbide	2	8
5221-7715	carbide	2	18
5221-7716	carbide	2	28
5221-7717	carbide	2	40

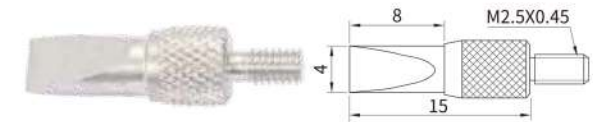
NEEDLE POINT



Unit:mm

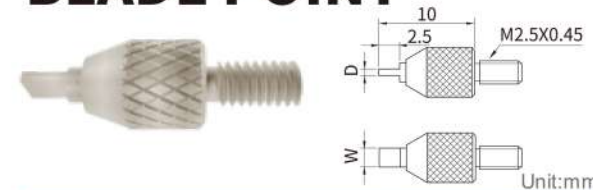
Code	Material of measuring face	L1	L	SR	ϕd
5221-7601	steel	11	15	0.4	2
5221-7602	steel	13	17	0.2	2
5221-7603	steel	21	25	0.4	3
5221-7604	steel	31	35	0.4	3

KNIFE EDGE POINT



Code	Material of measuring face
5221-7001	steel

BLADE POINT

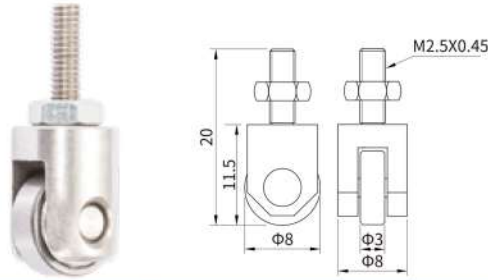


Unit:mm

Code	Material of measuring face	D	W
5221-7801	steel	0.4	2
5221-7802	steel	0.6	2
5221-7803	steel	1	4

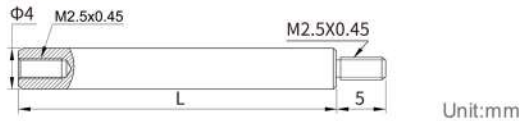


ROLLER POINT



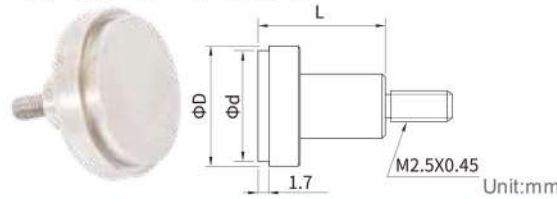
Code	Material of measuring face
5221-7901	steel

EXTENSION ROD



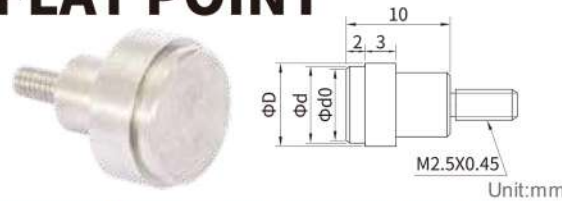
Code	Material of measuring face	L
5221-8001	steel	10
5221-8002	steel	15
5221-8003	steel	20
5221-8004	steel	25
5221-8005	steel	30
5221-8006	steel	35
5221-8007	steel	40
5221-8008	steel	45
5221-8009	steel	50
5221-8010	steel	55
5221-8011	steel	60
5221-8012	steel	65
5221-8013	steel	70
5221-8014	steel	75
5221-8015	steel	80
5221-8016	steel	90
5221-8017	steel	100

FLAT POINT



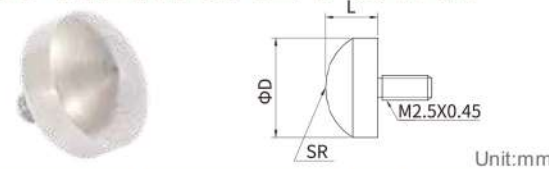
Code	Material of measuring face	flatness(μm)	Φd	ΦD	L
5221-9001	carbide	3	4.3	5.2	5
5221-9002	carbide	3	6.5	7	10
5221-9003	carbide	3	9.5	10.5	10
5221-9004	carbide	5	15	17	10
5221-9005	carbide	5	20	22	10
5221-9006	carbide	5	25	27	10
5221-9007	carbide	5	30	32	10

FLAT POINT



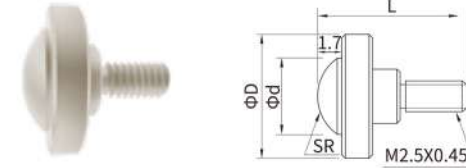
Code	Material of measuring face	flatness(μm)	Φd	Φd0	ΦD
5221-9008	carbide	3	6.4	3	7
5221-9009	carbide	3	8	4.5	9

SPHERICAL POINT



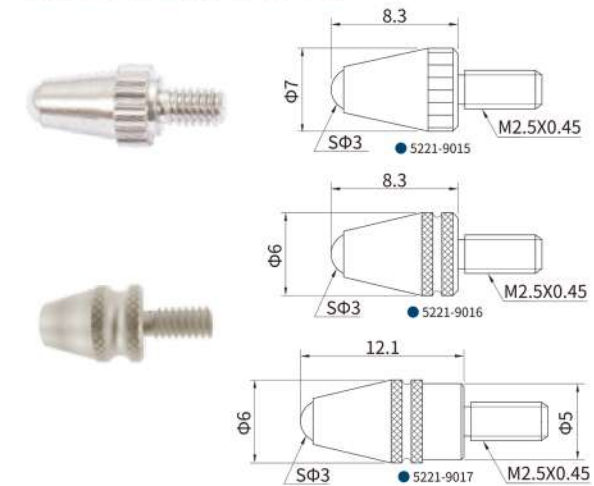
Code	Material of measuring face	ΦD	SR	L
5221-9010	steel	5.5	5	3
5221-9011	steel	7.9	5	5

SPHERICAL POINT



Code	Material of measuring face	ΦD	Φd	SR	L
5221-9012	carbide	5.5	5	3	3
5221-9013	carbide	7.9	5	5	5
5221-9014	carbide	10	7	5	5

POINT FOR SPECIAL INDICATOR



Code	Material of measuring face
5221-9015	carbide
5221-9016	carbide
5221-9017	carbide

DIAL TEST INDICATOR

WITH 0.001MM GRADUATION



Made in Europe



Dasqua Blu

DIN 2270



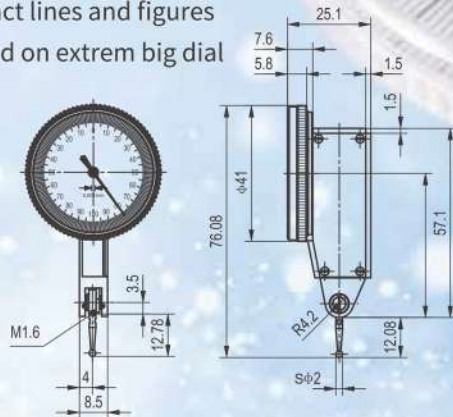
- ⚙️ • Made in Germany
- ✂️ • Large dial with scratch-resistance coating to make reading clear
- ✂️ • Graduation at 0.001mm, which is better than the limit of most other test indicators(0.002mm)
- 🏆 • With high abrasion resistance and non-magnetism
- 🏆 • Owing water proof ability
- 🏆 • Used to measure surface flatness, straightness and axial runout and easy to reach places where normal indicators can't reach



- Each test indicator is examined carefully and enclosed with calibration certificate.



- Distinct lines and figures etched on extrem big dial



- Jeweled bearing and ruby contact point to ensure high durability

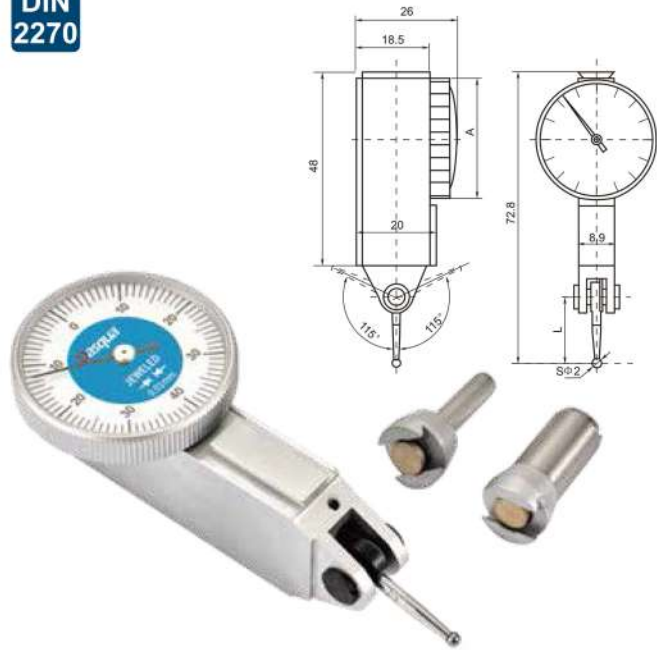


Unit: mm

Code	Range	Graduation
5221-0105-A	0-0.2	0.001

DIAL TEST INDICATOR

DIN 2270



- A hard frame body providing excellent rigidity
- White edge of dial for easy to read
- Hardened and ground contact point
- Satin chrome-finish case for durability
- Precision gear-driven design with smooth movement

Unit:mm

Code	Range	Graduation	Casing Diameter(A)	Length of Stylus(L)
5221-0005	0.8	0.01	φ30	16.5
5221-0000	0.8	0.01	φ37.5	16.5

INCH SIZE

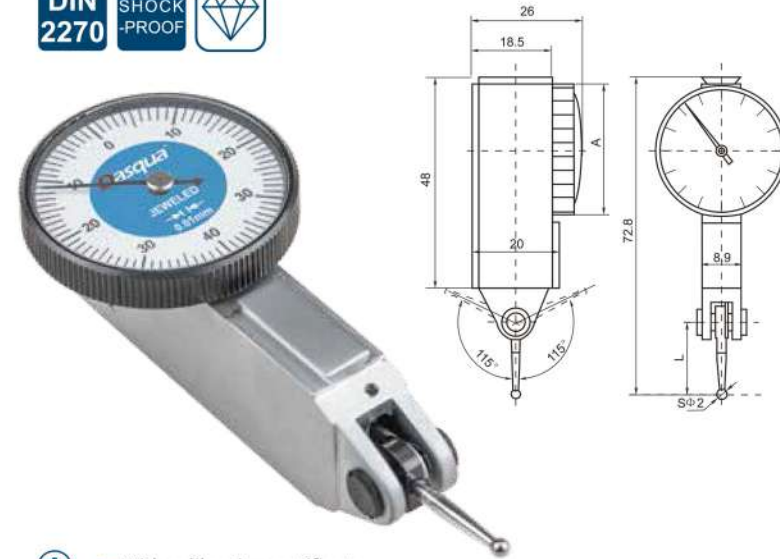
Unit:mm

Code	Range	Graduation	Casing Diameter(A)	Length of Stylus(L)
5610-0160	0-0.03"	0.001"	1.48"	0.62"
5610-0162	0-0.03"	0.0005"	1.48"	0.62"

DIAL TEST INDICATOR

WITH SHOCK-PROOF GEARING

DIN 2270 **SHOCK-PROOF**



- With calibration certificate
- Tough shock-proof gearing
- A hard frame body providing excellent rigidity
- White edge of dial for easy to read
- Hardened and ground contact point
- Satin chrome-finish case for durability
- Precision gear-driven design with smooth movement

Unit:mm

Code	Range	Graduation	Casing Diameter(A)	Length of Stylus(L)
5221-1129	0.8	0.01	φ30	16.5
5221-1140	0.8	0.01	φ37.5	16.5
5221-3105	0.2	0.002	φ30	16

INCH SIZE

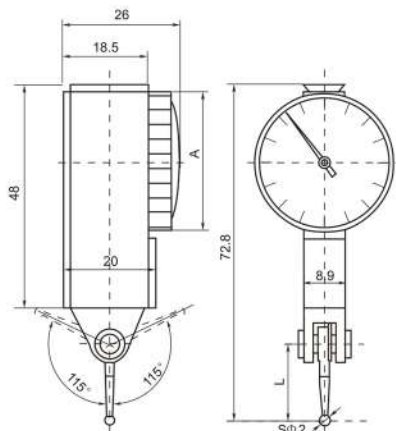
Unit:mm

Code	Range	Graduation	Casing Diameter(A)	Length of Stylus(L)
5221-3106	0-0.03"	0.0005"	1.18"	0.62"
5222-6105	0-0.02"	0.0005"	1.5"	0.53"



DIAL TEST INDICATOR

WITH LONG STYLI

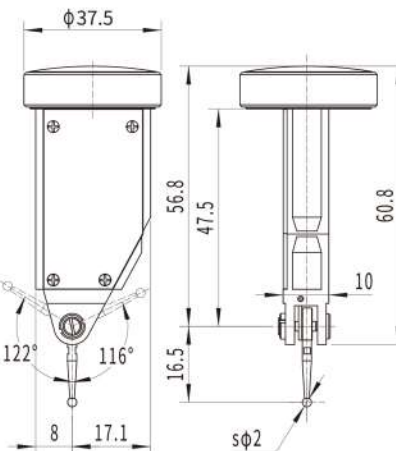


- With long styli for easily measuring hard-to-get places
- With calibration certificate
- Tough shock-proof gearing
- A hard frame body providing excellent rigidity
- White edge of dial for easy to read
- Hardened and ground contact point
- Satin chrome-finish case for durability
- Precision gear-driven design with smooth movement

Unit:mm

Code	Range	Graduation	Casing Diameter(A)	Length of Stylus(L)
5221-1215	0.8	0.01	φ30	30
5221-1220	0.8	0.01	φ37.5	30
5221-1205	0.8	0.01	φ30	46.4
5221-1210	0.8	0.01	φ37.5	46.4

BACK PLUNGER DIAL TEST INDICATOR



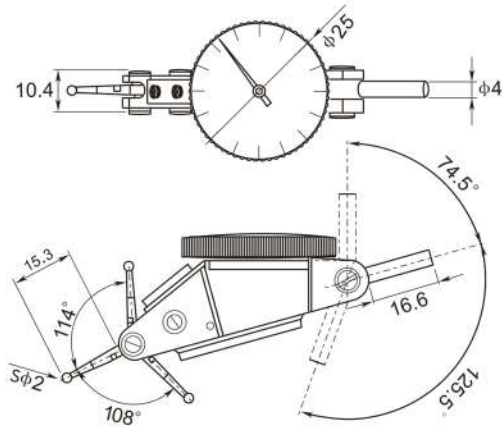
- With upward dial for measuring up side of a large workpiece or high workbench
- With calibration certificate
- Tough shock-proof gearing
- A hard frame body providing excellent rigidity
- White edge of dial for easy to read
- Hardened and ground contact point
- Satin chrome-finish case for durability
- Precision gear-driven design with smooth movement

Unit:mm

Code	Range	Graduation	Casing Diameter	Length of Stylus
5461-0005	0.8	0.01	φ37.5	16.5



TWICE RANGE DIAL TEST INDICATOR

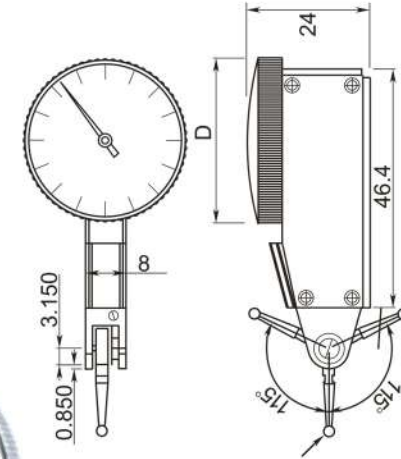


- Tough shock-proof gearing
- A hard frame body providing excellent rigidity
- White edge of dial for easy to read
- Satin chrome-finish case for durability
- Precision gear-driven design with smooth movement
- With twice range on large easy-to-read tilted dial

Unit:mm

Code	Range	Graduation	Casing Diameter	Reading
5221-1115	0-1.6	0.01	φ25	0-40-0
5222-6110	0-0.06"	0.0005"	1.5"	0-15-0

BI-DIRECTIONAL DIAL TEST INDICATOR



- With auto-reverse contact point
- With jeweled bearing
- Bi-directional constant clockwise rotation
- Hard frame body providing excellent rigidity
- Satin chrome-finish case for durability

Unit:mm

Code	Range	Graduation	D	Probe
5221-1106	0-0.5	0.01	φ32	Sφ1,Sφ2,Sφ3
5222-6103	0-0.03"	0.0005"	φ40	Sφ1,Sφ2,Sφ3
5222-6106	0-0.02"	0.0005"	φ40	Sφ1,Sφ2,Sφ3
5222-7103	0-0.008"	0.0001"	φ32	Sφ1,Sφ2,Sφ3

BI-DIRECTIONAL TEST INDICATOR AND MAG BASE SET



- With auto-reverse contact point
- With jeweled bearing
- Bi-directional constant clockwise rotation
- Hard frame body providing excellent rigidity
- Satin chrome-finish case for durability
- Together with a magnetic base for easy mounting

Unit:mm

Code	Range	Graduation
5221-1000	0-0.8	0.01
5222-6000	0-0.03"	0.0005"

TEST INDICATOR KIT WITH UNIVERSAL HOLDER



- Tough shock-proof gearing
- A hard frame body providing excellent rigidity
- White edge of dial for easy to read
- Hardened and ground contact point
- Satin chrome-finish case for durability
- Precision gear-driven design with smooth movement
- With Universal holder to measure universal direction

Unit:mm

Code	Range	Graduation
5221-1001	0-0.8	0.01
5222-6001	0-0.03"	0.0005"



TWICE RANGE DIAL TEST INDICATOR KIT

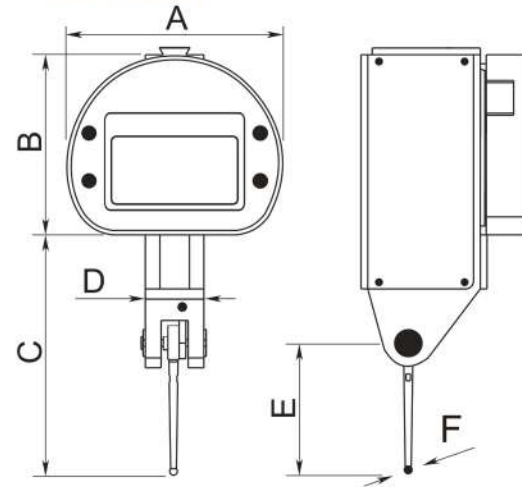


- Tough shock-proof gearing
- A hard frame body providing excellent rigidity
- White edge of dial for easy to read
- Hardened and ground extra contact point
- Satin chrome-finish case for durability
- Precision gear-driven design with smooth movement
- With twice range on large easy-to-read tilted dial

Unit:mm

Code	Range	Graduation
5221-1002	0-1.6	0.01
5222-6002	0-0.06"	0.0005"

DIGITAL TEST INDICATOR



- With large easy-to-read digital display
- With zero setting and metric-inch conversion functions
- Carbide probe
- Packed in a fitted case

Unit:mm

Code	Range	Resolution	A	B	C	D	E	F	Accuracy
5410-8105	0-0.5/0-0.02"	0.01/0.0005"	47.65	40	44.6	13.27	20	sq2	±0.010
5410-8110	0-0.8/0-0.03"	0.01/0.0005"	47.65	40	44.6	13.27	20	sq2	±0.020
5410-9105	0-0.4/0-0.02"	0.001/0.00005"	47.65	40	44.6	13.27	20	sq2	±0.020

STYLI FOR DIAL TEST INDICATOR



● 5221-1005
Made of steel



● 5221-1015
Made of carbide



● 5221-1070
Made of ruby

Unit:mm

Code	Size	Points' Material
5221-1005	16xφ1	steel
5221-1006	16.5xφ2	steel
5221-1007	17xφ3	steel
5221-1044	16xφ1	carbide
5221-1045	16.5xφ2	carbide
5221-1050	17xφ3	carbide
5221-1070	16.5xφ2	ruby
5221-1071	17xφ3	ruby
5221-1105	30.5xφ2	ruby
5221-1110	46.5xφ2	ruby



DIAL BORE GAUGE SET

WITH EXTRA LONG RANGE

Unit:mm

Code	Range	Graduation
5510-0005	35-160	0.01
5510-0000	1.4-6"	0.0005"

- Large measuring range from 35mm to 160mm
- So cost effective that can reach the range of 2 or 3 dial bore gauges
- Carbide-tipped and ceramic contact points optional for customers' desire
- Strictly made in accordance with DIN878



35-50mm 50-100mm 50-160mm NORMAL	VS	35-160mm DASQUA
--	-----------	----------------------------------

- Double fulcrum-points design for getting the correct measuring results



DIAL BORE GAUGE

Unit:mm

Code	Range	Graduation	Depth
5511-1100	4-6	0.01	40
5511-1105	6-10	0.01	40
5511-1110	10-18	0.01	100
5511-1115	18-35	0.01	150
5511-1120	35-50	0.01	150
5511-1121	35-60	0.01	150
5511-1125	50-100	0.01	150
5511-1130	50-160	0.01	150
5511-1135	160-250	0.01	400
5511-1140	250-450	0.01	500
5512-6105	0.24-0.4"	0.0005"	1.57"
5512-6110	0.4-0.7"	0.0005"	4"
5512-6115	0.7-1.5"	0.0005"	6"
5512-6120	1.4-2.4"	0.0005"	6"
5512-6125	2-4"	0.0005"	6"
5512-6130	2-6"	0.0005"	6"
5512-6135	6-10"	0.0005"	16"
5512-6140	10-16"	0.0005"	16"

- Used to measure close tolerance of holes, taper and roundness
- Steel body and interchangeable carbide anvils
- Extension rods and washers for fine adjustment in sizes to select a specific range
- Dial indicator fully protected by a rugged cover

HIGHER PRECISION DIAL BORE GAUGE

Unit:mm

Code	Range	Graduation	Depth
5511-2105	6-10	0.001	40
5511-2110	10-18	0.001	100
5511-2115	18-35	0.001	150
5511-2120	35-50	0.001	150
5511-2125	50-100	0.001	150
5511-2130	50-160	0.001	150
5511-2135	160-250	0.001	250
5511-2140	250-450	0.001	250
5512-7105	0.24-0.4"	0.0001"	1.57"
5512-7110	0.4-0.7"	0.0001"	4"
5512-7115	0.7-1.5"	0.0001"	6"
5512-7120	1.4-2.4"	0.0001"	6"
5512-7125	2-4"	0.0001"	6"
5512-7130	2-6"	0.0001"	6"
5512-7135	6-10"	0.0001"	16"
5512-7140	10-16"	0.0001"	16"





DIGITAL BORE GAUGE



- Used to measure close tolerance of holes, taper and roundness
- Steel body and interchangeable carbide anvils
- Extension rods and washers for fine adjustment in sizes to select a specific range
- Large digital display for easy reading
- Lightweight housing for extra length and protection
- Thermally insulated for extra stability of accuracy

Unit:mm

Code	Range	Resolution	Depth
5610-8105	6-10/0.24-0.4"	0.002/0.0001"	40/1.57"
5610-8110	10-18/0.4-0.7"	0.002/0.0001"	100/4"
5610-8115	18-35/0.7-1.5"	0.002/0.0001"	150/6"
5610-8120	35-50/1.4-2.4"	0.002/0.0001"	150/6"

DIAL BORE GAUGE WITH LONG HANDLE



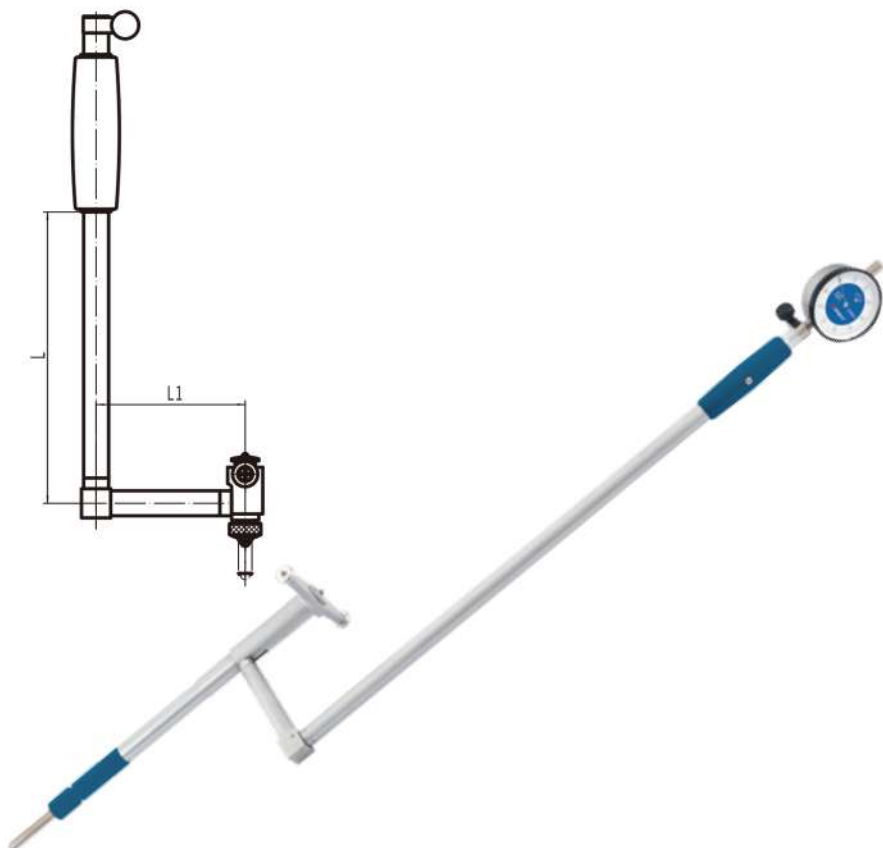
- Equipped with 0-3mm universal dial indicator
- Carbide-tipped contact points for durability
- The dial indicator is fully protected by a solid cover
- With screw anvils, convenience to set dimension

Unit:mm

Code	Range	Graduation	Depth
5411-0005	35-50	0.01	500
5411-0010	50-160	0.01	500
5411-0015	35-50	0.01	1000
5411-0020	50-160	0.01	1000
5411-0025	160-250	0.01	1000
5411-0030	250-450	0.01	1000

DIAL BORE GAUGE

90° RIGHT ANGLE



- Equipped with 0-3mm universal dial indicator
- Carbide-tipped contact points for durability
- The dial indicator is fully protected by a solid cover
- With screw anvils, convenience to set dimension
- For inside measurement of deep holes

Unit:mm

Code	Range	Graduation	L	L1
5441-1005	35-50	0.01	150	76.2
5441-1010	50-160	0.01	150	76.2
5441-1015	160-250	0.01	250	100
5441-1020	250-450	0.01	250	100

DIAL BORE GAUGE

WITH LARGE MEASURING RANGE



• 5581-0010
Digital available

- Equipped with 0-3mm universal dial indicator
- Carbide-tipped contact points for durability
- The dial indicator is fully protected by a solid cover
- With screw anvils, convenience to set dimension
- For inside measurement of special holes

Unit:mm

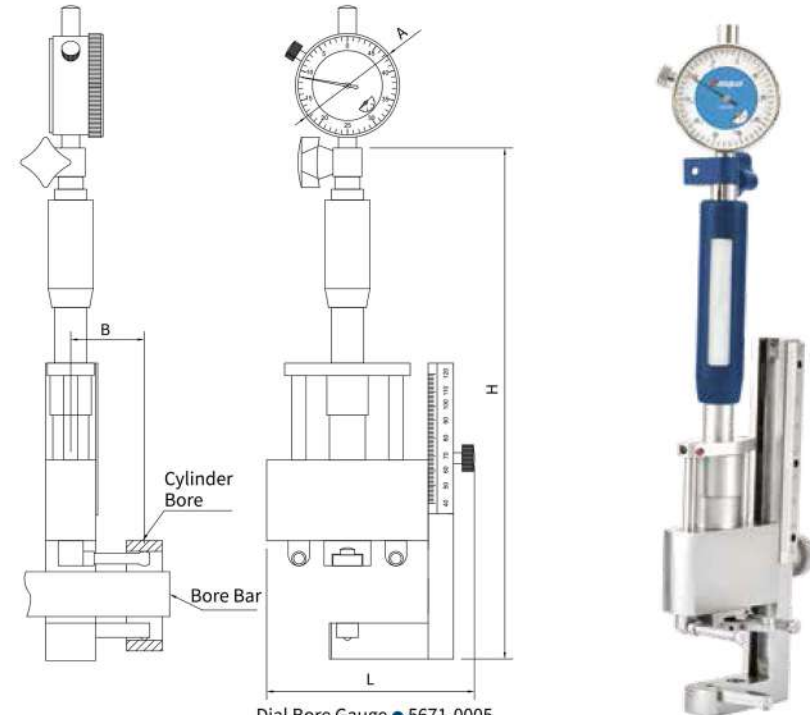
Code	Range	Graduation	Depth
5581-0005	400-800	0.01	400
5581-0010	400-800/16"-32"	0.002/0.0005"	400

GAUGE FOR BEARING METAL BORING MACHINE

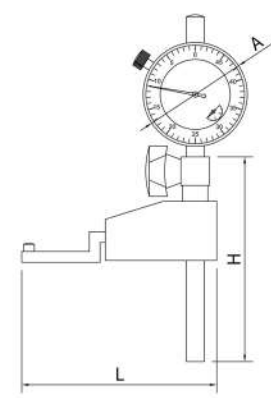
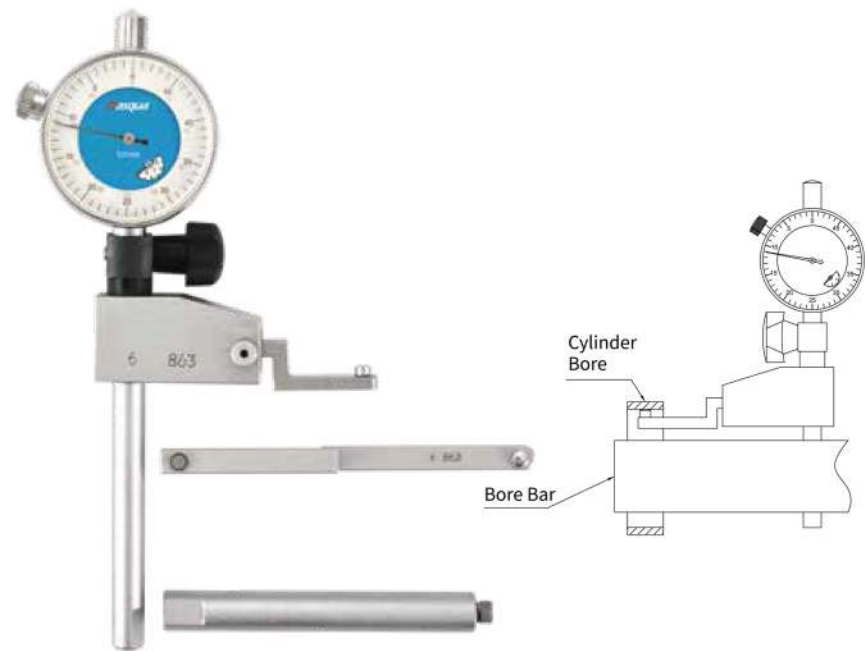
- Used to measure cylinder bore without unloading bore and to adjust the concentricity of cylinder bore and bore bar as well as adjust the highness of bore
- Large dial for easy reading
- Graduation:0.01mm
- Accuracy:0.03mm

Unit:mm

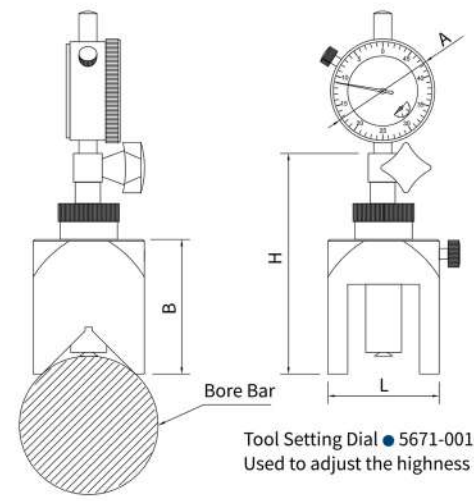
Code	Name	Range	Graduation	A	B	L	H	Accuracy
5671-0005	Dial bore gauge	φ48-66(Use to φ32 bore bar) φ62-100(Use to φ45 bore bar)	0.01	φ42	28	77	250	0.03
5671-0010	Tool Setting Dial	φ36-66(Use to φ32 bore bar) φ50-100(Use to φ45 bore bar)	0.01	φ42	63	46	100-128	0.03
5671-0015	Centre align dial	φ47-75(Use to φ32 bore bar) φ58-150(Use to φ45 bore bar)	0.01	φ42	/	107	111	0.03



Dial Bore Gauge ● 5671-0005
Used to measure cylinder bore without unloading bore

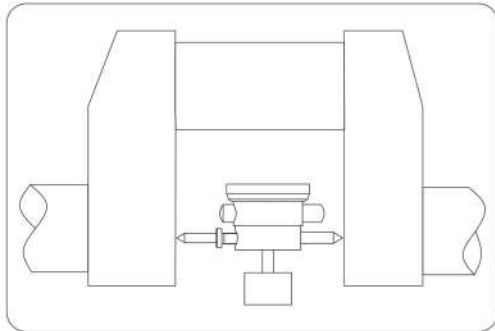


Centre Align Dial ● 5671-0015
Used to adjust the concentricity of cylinder bore and bore bar



Tool Setting Dial ● 5671-0010
Used to adjust the highness of bore

CRANKSHAFT TESTER

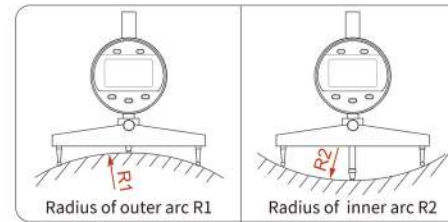
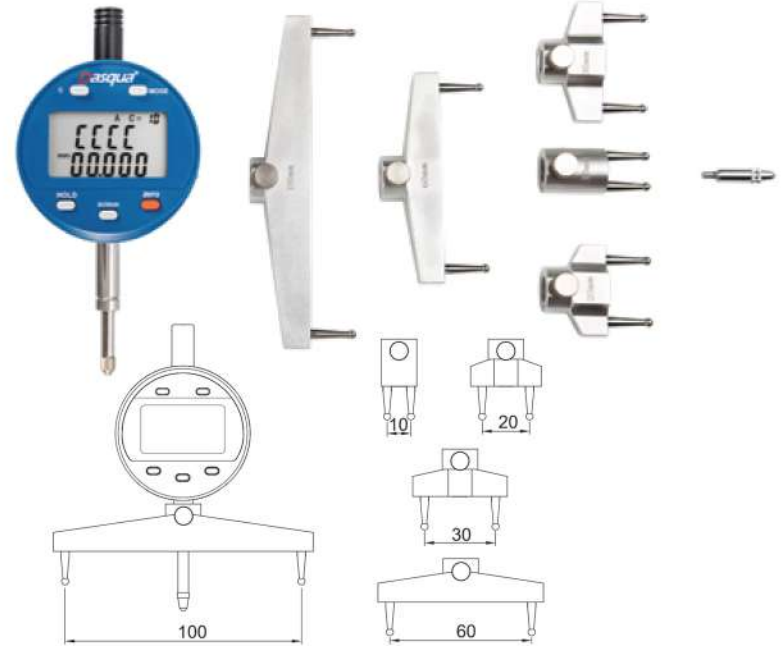


- To Measure crankshaft deflection
- The balance block is mounted on the back of dial indicator to keep the dial indicator facing up
- Measuring range: 60-500mm
- Graduation: 0.01mm
- Rotatable dial supplied with extensions

Unit:mm

Code	Range	Graduation	Dial indicator range	Extension rod	Accuracy
5751-0005	60-300	0.01	0-3	32,2,48,96,185	±0.014
5751-0010	60-500	0.01	0-3	32,2,48,96,185,197	±0.014

DIGITAL RADIUS GAUGE



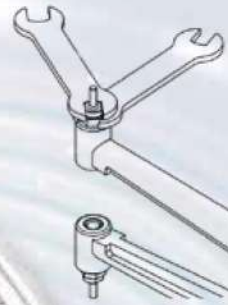
- Use to measure radius of internal and external arcs
- Supplied with 5 jaws for different sizes of arc
- USB data output
- Large LCD display with clear reading
- Stem and spindle stainless, hardened and lapped
- Different sized probes for arc measurements
- Measured value display in percent and radius display

Unit:mm

Code	Outside Diameter Range	Inside Diameter Range	Graduation	Radius Accuracy
5831-0005	5-700	6.5-700	0.005/0.0015"	<1%

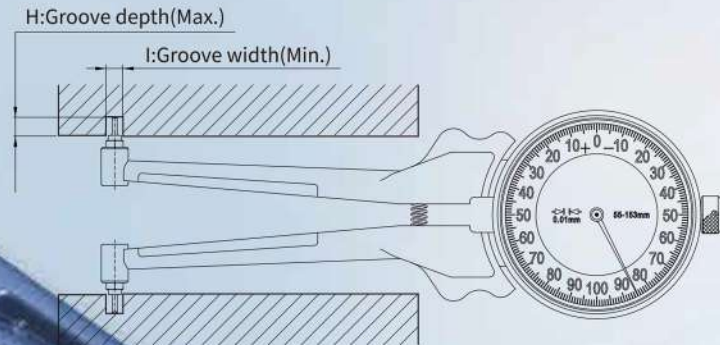


INTERCHANGEABLE POINTS BORE GAUGE



MOST VALUE SAVER

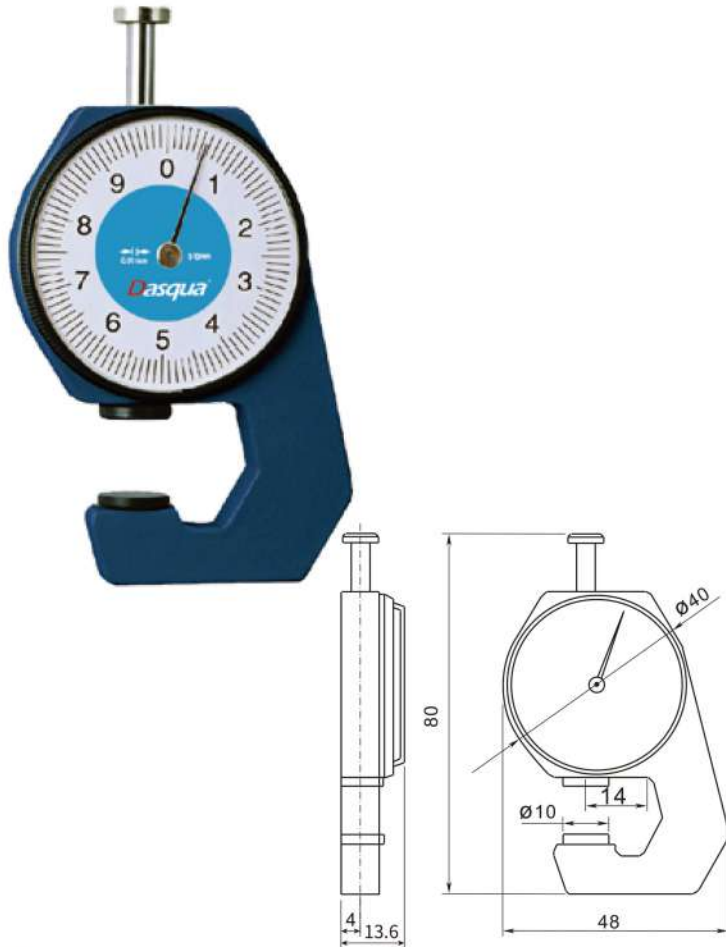
The range of this product equals 5 same-kind products thanks to interchangeable points.



Unit:mm

Code	Graduation	Measuring Range	Indicating range	L	l	Error
5800-1015	0.01	55-153	2	90	3.5	±20µm

THICKNESS GAUGE

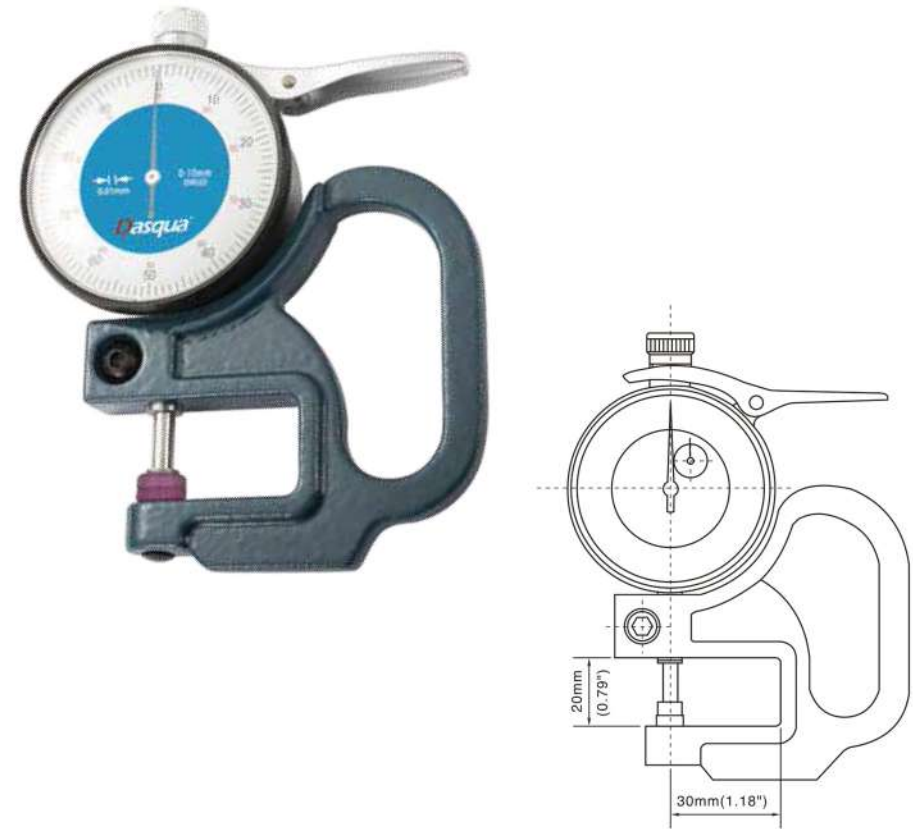


- Thickness gauges are attachment to the dial indicators and offer a quick and efficient means with a convenient grip handle to measure the thickness of paper, leather, rubber, fabric, metal plate, glass ,plastic plate, etc
- With steel or ceramic measuring faces
- Sturdy light metal frame, lacquered, with spindle lifting lever
- Stainless spindle, hardened and precision ground

Unit:mm

Code	Range	Graduation	Accuracy
5841-8110	0-10	0.1	±0.05

THICKNESS GAUGE



• 5841-8105

- Thickness gauges are attachment to the dial indicators and offer a quick and efficient means with a convenient grip handle to measure the thickness of paper, leather, rubber, fabric, metal plate, glass ,plastic plate, etc
- With ceramic measuring faces
- Sturdy light metal frame, lacquered, with spindle lifting lever
- Stainless spindle, hardened and precision ground

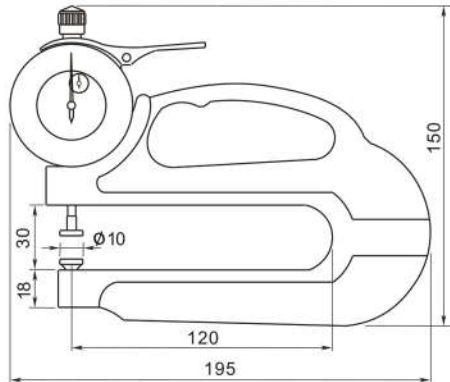
Unit:mm

Code	Range	Graduation	Accuracy
5841-8105	0-10	0.01	±0.02
5841-8106	0-30	0.01	±0.035
5842-4105	0-0.5"	0.0005"	±0.001"



THICKNESS GAUGE

WITH DEEP-THROAT



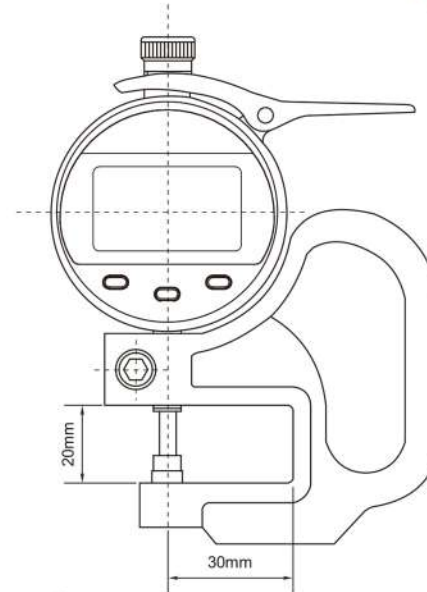
- Contact point and the flat anvil are ceramic for corrosion resistance
- 120mm throat for measuring the thickness of items where a greater depth is required
- Grip handle, thumb trigger, and spring-loaded spindle for accurate measurements
- Provide quick and efficient inspection of thickness

Unit:mm

Code	Range	Graduation	Accuracy
5841-1105	0-10	0.01	±0.02
5841-1110	0-20	0.01	±0.03
5842-4110	0-0.5"	0.0005"	±0.001"

DIGITAL THICKNESS GAUGE

mm / in Battery + CR2032 Data output



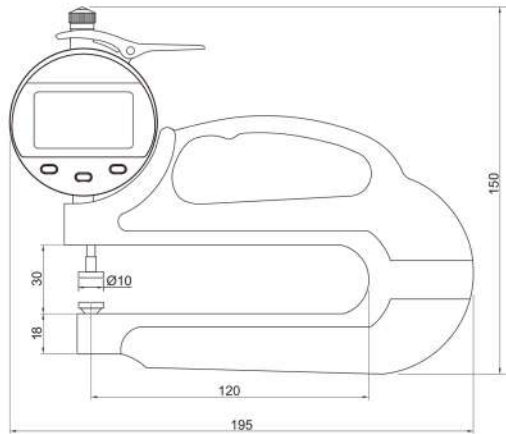
- Thickness gauges are attachment to the dial indicators and offer a quick and efficient means with a convenient grip handle to measure the thickness of paper, leather, rubber, fabric, metal plate, glass, plastic plate, etc
- With large LCD Screen and provide error-free reading
- With ceramic measuring faces
- With convenient grip handle, thumb trigger and spring-loaded spindle for accurate measurements

Unit:mm

Code	Range	Resolution	Accuracy
5840-6200	0-10/0-0.4"	0.01/0.0005"	±0.02

DIGITAL THICKNESS GAUGE

WITH DEEP-THROAT



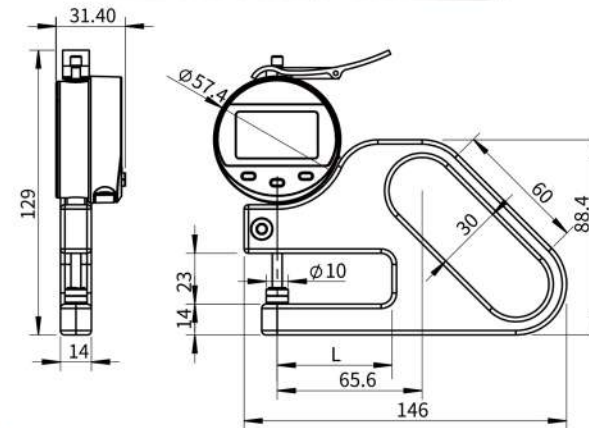
- Contact point and the flat anvil are ceramic for corrosion resistance
- 120mm throat for measuring the thickness of items where a greater depth is required
- Grip handle, thumb trigger, and spring-loaded spindle for accurate measurements
- Provide quick and efficient inspection of thickness
- With large LCD Screen and provide error-free reading

Unit:mm

Code	Range	Resolution	Accuracy
5840-6205	0-10/0.4"	0.01/0.0005"	±0.02

DIGITAL THICKNESS GAUGE

WITH BLACK HANDLE



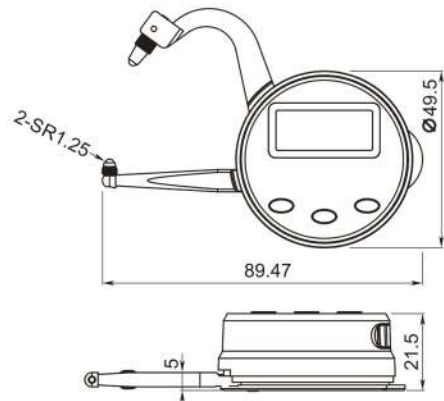
- Contact point and the flat anvil are ceramic for corrosion resistance
- Handle with anodization for longer service life
- Grip handle, thumb trigger, and spring-loaded spindle for accurate measurements
- Provide quick and efficient inspection of thickness
- With large LCD Screen and provide error-free reading

Unit:mm

Code	Range	Resolution	L	Accuracy
5840-6215	0-10/0.4"	0.01/0.0005"	30	±0.02
5840-6220	0-10/0.4"	0.01/0.0005"	50	±0.02
5840-6225	0-10/0.4"	0.01/0.0005"	100	±0.02
5840-6230	0-10/0.4"	0.01/0.0005"	120	±0.02



DIGITAL THICKNESS GAUGE

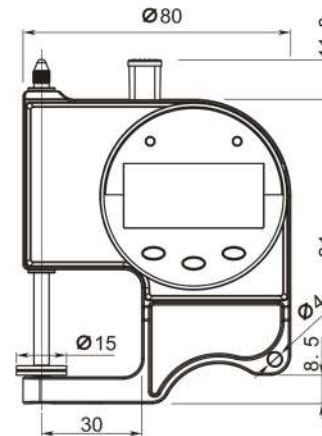


- Large LCD display for easy and clear reading
- Spring loaded travel
- The compact size and lightweight ensure it is very convenient ,handy and easy to operate
- Data hold function
- Class A for electrostatic discharge

Unit:mm

Code	Range	Resolution	Accuracy
2140-8105	0-25/0-1"	0.01/0.0005"/1/64"	0.05/0.002"

DIGITAL THICKNESS GAUGE

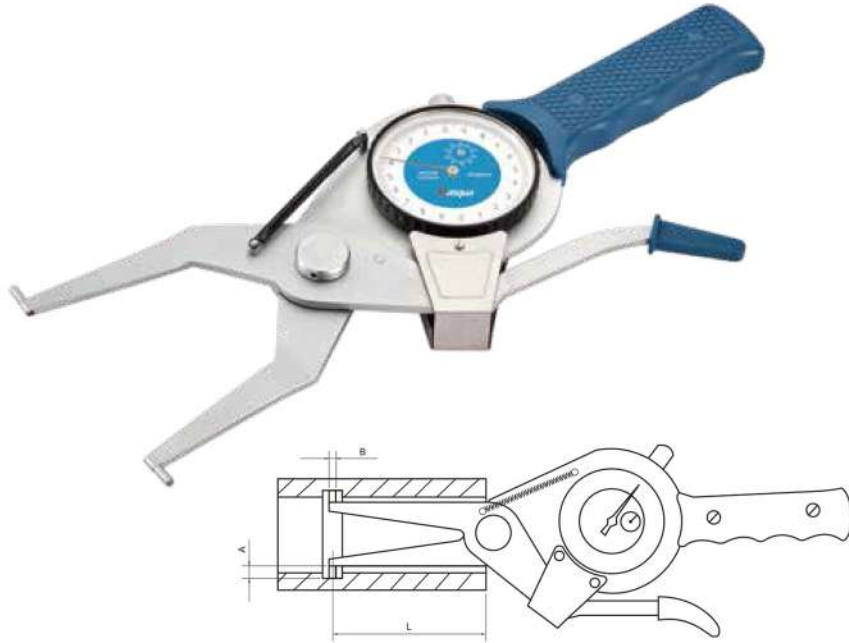


- Spring load movement with a push button
- Large LCD display for easy and clear readings
- Thickness measurement of different materials
- Data hold function

Unit:mm

Code	Range	Resolution	Accuracy
2140-8110	0-25/0-1"	0.01/0.0005"/1/128"	0.05/0.002"

INTERNAL DIAL CALIPER GAUGE



- Versatile internal dial caliper gauge for measuring inside diameter, ring groove bottom diameter and inside step diameter or special holes of the workpiece
- The gauge is spring loaded and makes point contact at a constant measuring force
- Carbide measuring contact points
- Can be set with a micrometer or ring gauge
- Bezel rotates for zero setting

Unit:mm

Code	Range	Graduation	Accuracy	A	B	L
5810-2005	15-35	0.01	±0.035	3	φ3	50
5810-2010	35-55	0.01	±0.035	6	φ3	80
5810-2015	55-75	0.01	±0.035	8	φ3	90
5810-2020	75-95	0.01	±0.035	8	φ3	100
5810-2025	95-115	0.01	±0.035	10	φ3.2	150
5810-2030	115-135	0.01	±0.035	10	φ3.2	150
5812-4005	0.6-1.4"	0.0005"	±0.002"	0.118"	0.118"	1.9"
5812-4010	1.4-2.2"	0.0005"	±0.002"	0.236"	0.118"	3.1"
5812-4015	2.2-3.0"	0.0005"	±0.002"	0.315"	0.118"	3.1"
5812-4020	3.0-3.8"	0.0005"	±0.002"	0.315"	0.118"	3.9"

INTERNAL DIGITAL CALIPER GAUGE



Battery CR2032
 Data output
 mm/in

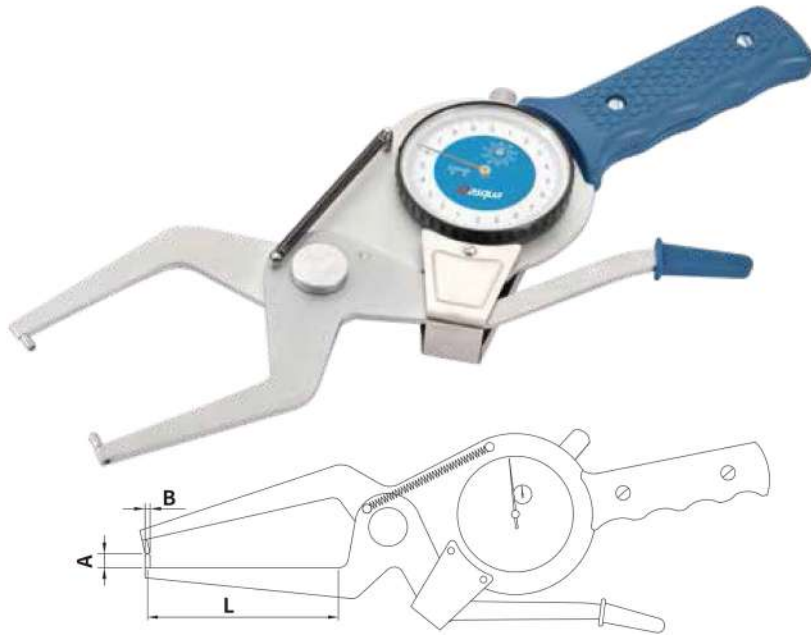
- Versatile internal dial caliper gauge for measuring inside diameter, ring groove bottom diameter and inside step diameter or special holes of the workpiece
- The gauge is spring loaded and makes point contact at a constant measuring force
- With large LCD display for clear and error-free readings adings
- Carbide measuring contact points
- With data output for SPC analysis

Unit:mm

Code	Range	Resolution	Accuracy	L	A	D
5811-0005	15-35	0.01/0.0005"	±0.035/0.002"	50	3	φ3
5811-0010	35-55	0.01/0.0005"	±0.035/0.002"	80	6	φ3
5811-0015	55-75	0.01/0.0005"	±0.035/0.002"	90	8	φ3
5811-0020	75-95	0.01/0.0005"	±0.035/0.002"	100	8	φ3
5811-0025	95-115	0.01/0.0005"	±0.035/0.002"	150	10	φ3.2
5811-0030	115-135	0.01/0.0005"	±0.035/0.002"	150	10	φ3.2



EXTERNAL DIAL CALIPER GAUGE

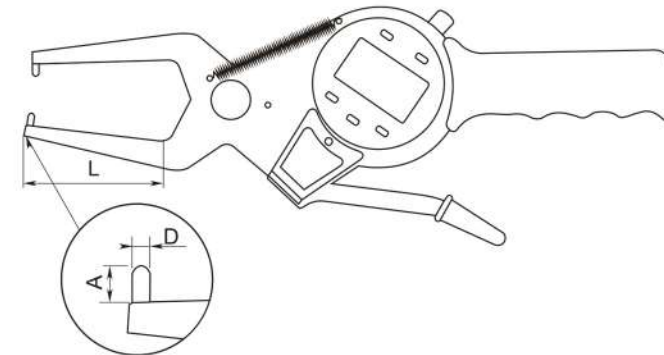


- Versatile external dial caliper gauge for measuring outside diameter, ring groove bottom diameter, narrow grooves and the dimensions that hard to reach
- The gauge is spring loaded and makes point contact at a constant measuring force
- Carbide measuring contact points
- Can be set with a micrometer or ring gauge
- Bezel rotates for zero setting

Unit:mm

Code	Range	Graduation	Accuracy	A	B	L
5721-0005	0-20	0.01	±0.035	6	φ3	60
5721-0010	20-40	0.01	±0.035	6	φ3	60
5721-0015	40-60	0.01	±0.035	6	φ3	55
5721-0020	60-80	0.01	±0.035	6	φ3	55
5721-0025	80-100	0.01	±0.035	6	φ3	55
5722-4005	0-0.8"	0.0005"	±0.002"	0.236"	0.118"	2.3"
5722-4010	0.8-1.6"	0.0005"	±0.002"	0.236"	0.118"	2.3"
5722-4015	1.6-2.4"	0.0005"	±0.002"	0.236"	0.118"	2.1"
5722-4020	2.4-3.2"	0.0005"	±0.002"	0.236"	0.118"	2.1"
5722-4025	3.2-4.0"	0.0005"	±0.002"	0.236"	0.118"	2.1"

EXTERNAL DIGITAL CALIPER GAUGE

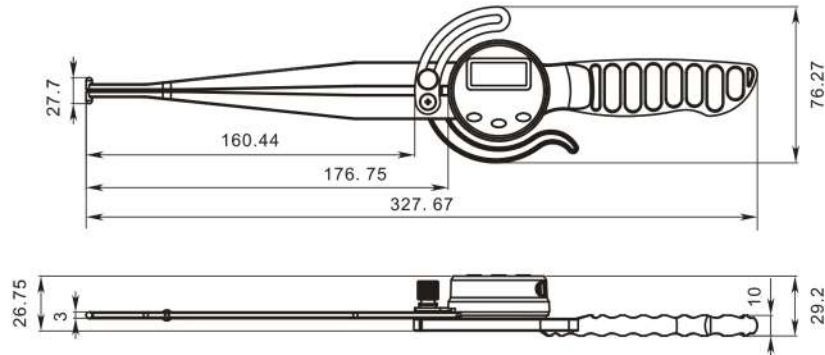


- Versatile internal dial caliper gauge for measuring outside diameter, ring groove bottom diameter, narrow grooves and the dimensions that hard to reach
- The gauge is spring loaded and makes point contact at a constant measuring force
- With large LCD display for clear and error-free readings
- Carbide measuring contact points
- With data output for SPC analysis

Unit:mm

Code	Range	Resolution	Accuracy	A	D	L
5630-1005	0-20	0.01/0.0005"	±0.035/0.002"	6	φ3	60
5630-1010	20-40	0.01/0.0005"	±0.035/0.002"	6	φ3	60
5630-1015	40-60	0.01/0.0005"	±0.035/0.002"	6	φ3	55
5630-1020	60-80	0.01/0.0005"	±0.035/0.002"	6	φ3	55
5630-1025	80-100	0.01/0.0005"	±0.035/0.002"	6	φ3	55

INTERNAL DIGITAL CALIPER GAUGE

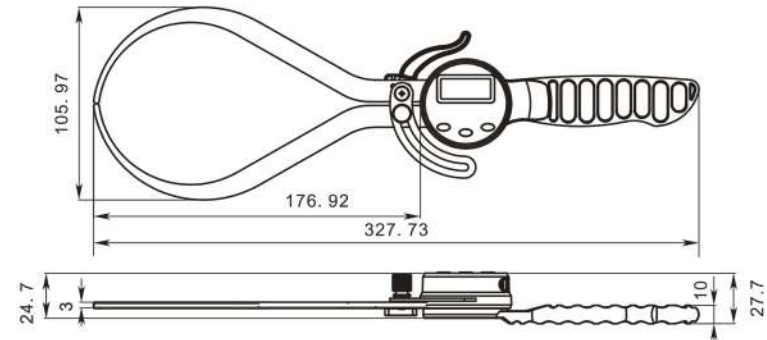


- Make quick and accurate inside measurements of different materials
- Perfect for woodworking, carpentry, metal fabrication, etc
- High hardness and wear resistance
- With large LCD display for clear and error-free readings
- The gauge is spring loaded and makes point contact at a constant measuring force

Unit:mm

Code	Range	Resolution	Accuracy
1804-1010	12.7-165/0.5-6.5"	0.1/0.005"/1/64"	0.2/0.01"
1804-1015	12.7-216/0.5-8.5"	0.1/0.005"/1/64"	0.3/0.02"

EXTERNAL DIGITAL CALIPER GAUGE



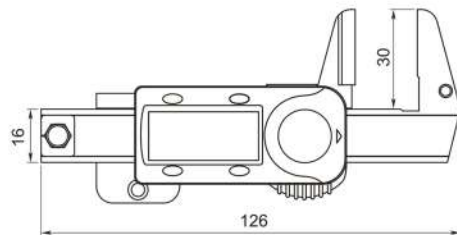
- Make quick and accurate outside measurements of different materials.
- Perfect for woodworking, carpentry, metal fabrication, etc
- High hardness and wear resistance
- With large LCD display for clear and error-free readings
- The gauge is spring loaded and makes point contact at a constant measuring force

Unit:mm

Code	Range	Resolution	Accuracy
1804-1020	0-150/0-6"	0.1/0.005"/1/64"	0.2/0.01"
1804-1025	0-200/0-8"	0.1/0.005"/1/64"	0.3/0.02"



SNAP ACTION CALIPER

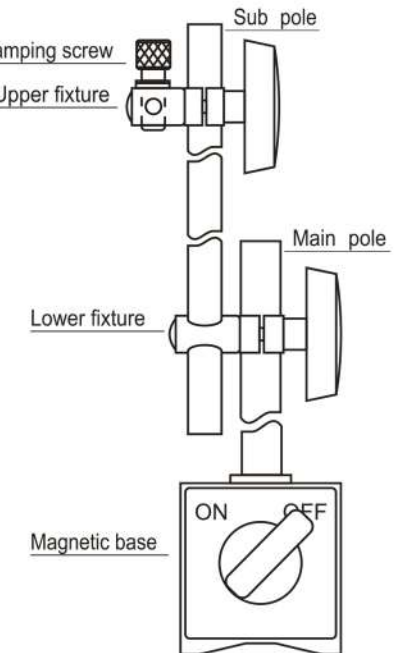


- With spring-loaded mechanism to allow quick and efficient measurements
- With large LCD display for clear and error-free readings
- Wide jaw for easy position
- Hardened stainless steel construction
- Hanging loop included for attachment to belt or chain

Unit:mm

Code	Range	Resolution	Accuracy
2140-8101	0-25/0-1"	0.0005"/0.01/1/64	0.03/0.0015"

MAGNETIC STAND



- Solid structure with electroplated surfaces, precision ground end-faces
- With fine adjustment device, which is heat-treated to ensure stability and durability
- With clamp holes of 6mm, 8mm, which satisfy the use of most indicators and test indicators
- 150° V-grooved base can be placed on the cylindrical surfaces for easily fixing the indicators
- Well selected ferrite permanent magnet with magnetic force greater than calibration value
- On/off switch for magnet, easy to move the base without the influence of magnetic force

Unit:mm

Code	Holding Power	Base	Main Pole	Sub Pole	Dia. of Clam Hold	Weight
7700-0005	80kg	58x50x55	φ12x177	φ10x165	φ6/φ8	1.6kg

LOCK 'T MAGNETIC BASE

Dasqua Blu



- **Two clamping holes**

Designed with two clamping holes, which are suitable for metric and inch dial indicators, plus dovetail groove for test indicators, bringing great convenience holding capabilities

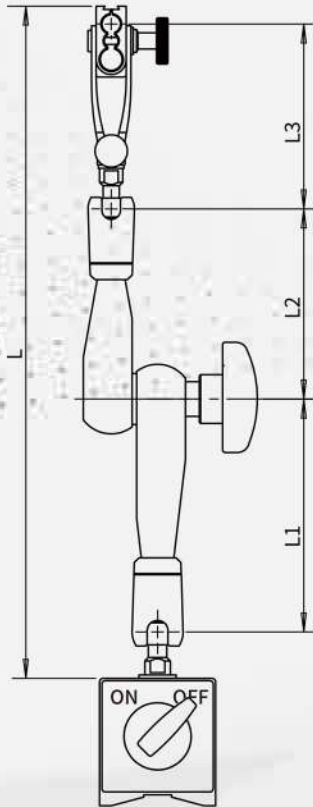


**φ6mm, φ8mm,
3/8", Dovetail**

- **CNC Machining**

Main parts produced on CNC machines, providing extremely accurate and high precision, ensuring high quality and high stability

- All wear parts use hardened high grade steel and with hardness over 58HRC
- Inner structure is made of bearing steel, delivering more wear-resisting ability and longer service life. delivering more wear-resistance and longer life



Unit: mm

Code	Holding Power	Base	L1	L2	L3	L
7121-0020	50kg	40 x 40 x 40	62	52	79	220
7121-0025	80kg	60 x 50 x 55	100	82	81	290
7121-0030	100kg	73 x 50 x 55	145	95	81	355
7121-0035	100kg	73 x 50 x 55	175	125	81	415

• Equal locking force, more competitive price

10.0KG
(Arm Locking Power)

- **Super forced locking mechanical universal arm**

New type locking mechanism, super strong arm lock and super tight locking force guarantees long life and firm positioning



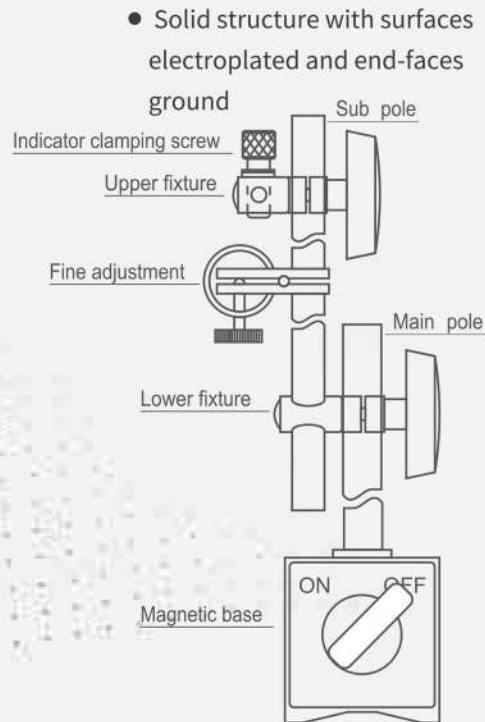
- **Ergonomic design**

Ergonomic-designed tightening knob provides comfortable and firm grip; Flexible and super strong rotary joints, providing smooth adjustments in any direction or location



MAGNETIC BASE WITH FINE ADJUSTMENT

- 150° V-grooved base can be placed on the cylindrical surfaces as well as flat surfaces for easily fixing the indicators.
- Well selected ferrite permanent magnet with magnetic force greater than calibration value
- On/off switch for magnet, easy to move the base without the influence of magnetic force.



- With clamp holes of $\phi 4\text{mm}$, $\phi 8\text{mm}$, $3/8''$, which satisfy the use of most indicators and test indicators.



- With fine adjustment device, which is heat-treated to ensure stability and durability.

Unit:mm

Code	Holding Power	Base	Main Pole	Sub Pole	Dia. of Clam Hold	weight
7122-0004	60kg	60x50x55	$\phi 12 \times 176$	$\phi 10 \times 150$	$\phi 6 / \phi 8$	1.5kg
7122-0005	80kg	60x50x55	$\phi 12 \times 176$	$\phi 10 \times 150$	$\phi 6 / \phi 8$	1.5kg
7122-0010	100kg	73x50x55	$\phi 16 \times 255$	$\phi 14 \times 165$	$\phi 6 / \phi 8$	2.3kg
7122-0015	130kg	117x50x55	$\phi 20 \times 355$	$\phi 14 \times 210$	$\phi 6 / \phi 8$	3.7kg
7123-1004	60kg	60x50x55	$\phi 12 \times 176$	$\phi 10 \times 150$	$\phi 4 / \phi 8 / 3/8''$	1.5kg
7123-1005	80kg	60x50x55	$\phi 12 \times 176$	$\phi 10 \times 150$	$\phi 4 / \phi 8 / 3/8''$	1.5kg
7123-1010	100kg	73x50x55	$\phi 16 \times 255$	$\phi 14 \times 165$	$\phi 4 / \phi 8 / 3/8''$	2.3kg
7123-1015	130kg	117x50x55	$\phi 20 \times 355$	$\phi 14 \times 210$	$\phi 4 / \phi 8 / 3/8''$	3.7kg

MAGNETIC STAND

WITH FLEXIBLE JOINTED ARM

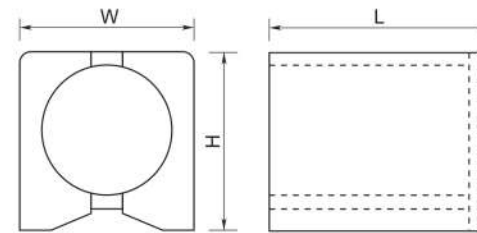


- Flexible, strong and precise rotary jointed arms, which can adjust to any position
- Ball joints enables quick and easy positioning, all three joints are controlled by a tightening knob
- With central locking mechanism
- Clamping force can be continuously adjusted, with high stability
- With clamp hole, dovetail groove, which can clamp many types of indicators
- 150° V-grooved base, can be placed on the cylindrical surfaces for easily fixing the indicators
- On/off switch for magnet, easy to move the base without the influence of magnetic force

Unit:mm

Code	Holding Power	Base	Arm length	L1	L2	L3	Dia. of Clam Hold	Weight
7312-0005	30kg	35x30x35	158	56	51	17	φ6/φ8/Devotail	0.4kg
7312-0010	80kg	60x50x55	310	110	101	73	φ6/φ8/Devotail	1.4kg
7312-0015	100kg	73x50x55	385	147	130	76	φ6/φ8/Devotail	1.8kg
7312-0020	130kg	117x50x55	635	285	225	76	φ6/φ8/Devotail	5.0kg

MAGNETIC BASE



- 150° V-grooved base can be placed on the cylindrical surfaces for easily fixing the indicators
- Carefully selected ferrite permanent magnet with inspected magnetic force which is greater than calibration value
- On/off switch for magnet, easy to move the base without the influence of magnetic force
- Blue wrinkle finish on non-working surfaces

Unit:mm

Code	Holding Power	size(LxWxH)	Thread	Magnet Type	Weight
7000-0005	80kg	60x50x55	M8x1.25	Ferrite	1.0kg
7000-0010	100kg	73x50x55	M8x1.25	Ferrite	1.3kg
7000-0015	130kg	117x50x55	M8x1.25	Ferrite	2.0kg
7000-0020	30kg	35x30x35	M5x0.8	NdFeB	0.2kg



MAGNETIC STAND

MICROMETER STAND WITH MAGNETIC BASE

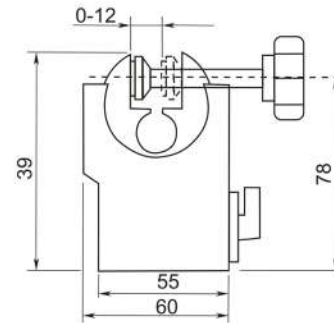


● 7511-0005

- ⚙️ • Small shape ensures easy and fast fixing to machine
- ✂️ • With two round permanent magnets (7521-0005), with laminated permanent magnets and V-grooved base (7521-0010), without magnet on/off switch
- 🏆 • Low height enables fast, safe and easy mounting on machines and jigs
- 🏆 • Black enamel finish

Unit:mm

Code	Holding Power	Base	Stem	Dia. of Clam Hold	Weight
7511-0005	15kg	φ30x25	65	φ6/φ8/Devotail	200g
7521-0005	20kg	73x37x12	/	φ8	160g
7521-0010	20kg	73x37x26	/	φ8	300g

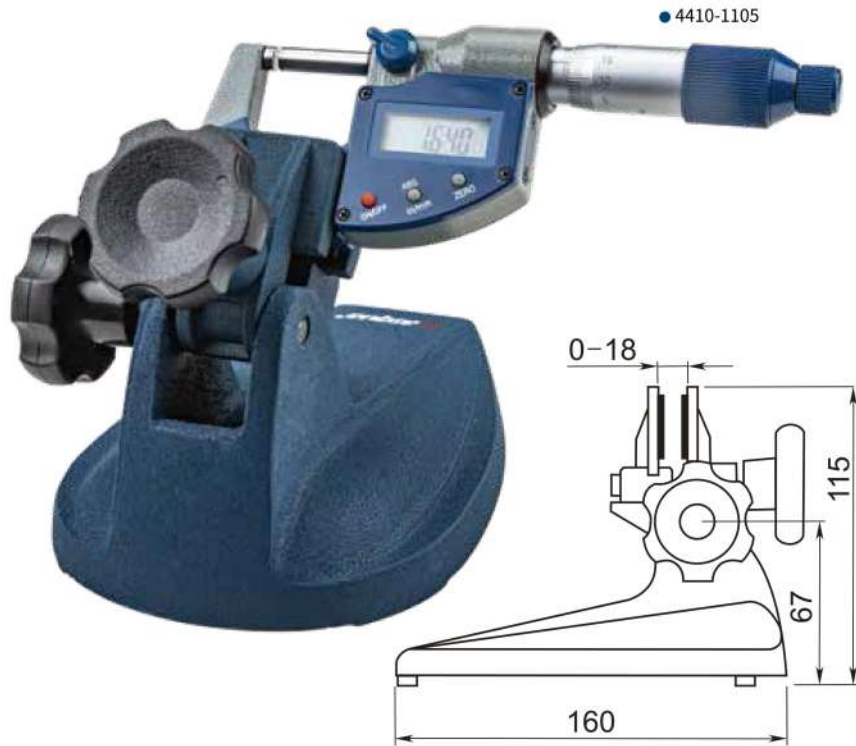


- ⚙️ • Keep hands free for operating micrometer and positioning workpiece
- ✂️ • Perfect for batch or mass production measurements in manufacturing and quality assurance
- 🏆 • Proper weight and low center of gravity ensure stable base
- 🏆 • Blue enamel finish

Unit:mm

Code	Capacity	Magnetic	Weight
7111-1000	up to 300/12"	with magnetic base	0.8kg

MICROMETER STAND



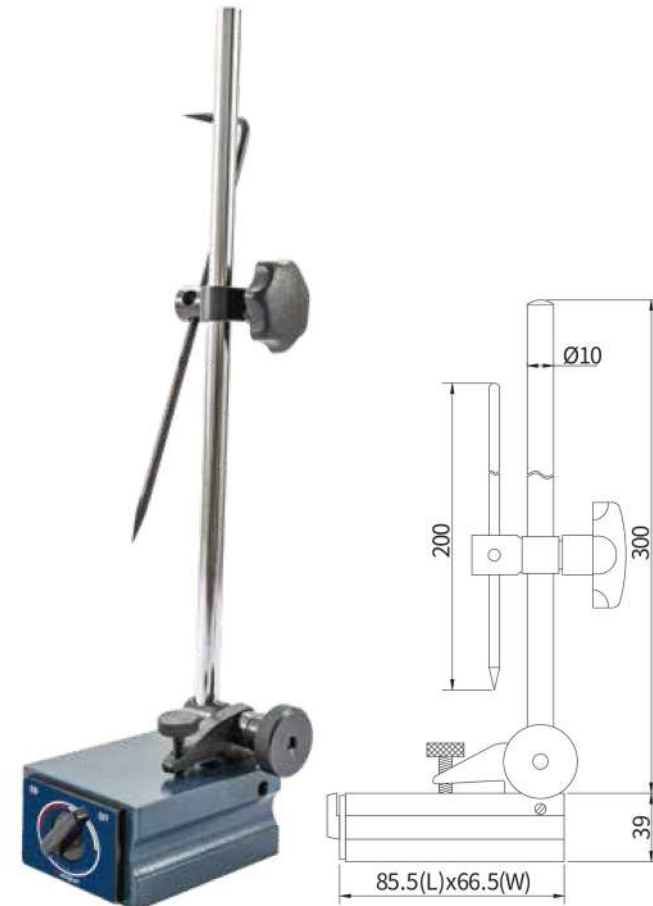
- Keep hands free for operating micrometer and positioning workpiece
- Perfect for batch or mass production measurements in manufacturing and quality assurance
- 150° V-grooved base can be placed on the cylindrical surfaces for easily fixing the indicators
- On/off switch for magnet, easy to move the base without the influence of magnetic force
- Blue enamel finish

Without digital micrometer, which can be found and ordered in page 41

Unit:mm

Code	Capacity	Magnetic
7111-1105	up to 100/4"	without magnetic base

SURFACE GAUGE WITH SWITCHABLE MAGNETIC BASE



- Combine the surface gauge and magnetic base in one
- Magnetic base embedded with permanent magnet and having on/off switch, magnetic pull of 80kg
- Scriber head is hardened
- Hardened, ground, and lapped steel base for high stability
- Base with fine adjustment function

Unit:mm

Code	Holding Power	Dia. of Clam Hold	Main Pole	Remark
7123-0005	80kg	φ4&3/8"	φ8x230	with Fine Adjustment



MINI LED LIGHT WITH MAGNETIC BASE



- Great for auto preparation work
- Lens “zoom” for concentrated lighting
- Articulating flex shaft allows easy and accurate positioning
- Flexible shaft of 120mm with universal movement
- Magnetic base with good magnetic pull of 12kg
- LED flashlight requires 3 AAA batteries, and flashlight is removable
- Brightness can be adjusted to dark, bright and mild

Unit:mm

Code	Weight
7611-0020	0.4kg

PRECISION GRANITE COMPARATOR STAND



- Easy maintenance due to the non-rusting base
- The rigid granite base is free from burrs and pileups due to its fine-grain composition and less viscousness compared with casting iron
- The flatness is always accurate and the workpiece is free from damage
- Used for indicator of Dia.8mm and 3/8"
- Measuring surface are precision ground and diamond lapped

Unit:mm

Code	Pole	Base	Dia. of Clam Hold	Weight
7912-0004	φ25x180	150x100x40	φ8/3/8"	2.9kg
7912-0005	φ30x300	210x150x50	φ8/3/8"	7.0kg
7912-0010	φ30x300	300x200x60	φ8/3/8"	11.6kg



PRECISION GRANITE COMPARATOR STAND

WITH FINE ADJUSTMENT



- ⚙️ • Used for the measuring room and calibration laboratory
- Easy maintenance due to the non-rusting base
- ✂️ • The rigid granite base is free from burrs and pileups due to its fine-grain composition and less viscousness compared with cast iron
- 🏆 • The flatness is always accurate and the workpiece is free from damage
- Measuring surface fine ground and diamond lapped
- Hardened column with height adjustment and setting ring
- Dial indicator shank $\varnothing 8$ mm
- With fine adjustment over the entire travel

Unit:mm

Code	Base	Pole	Dia. of Clam Hole
7812-0015	300x200x60	$\varnothing 30 \times 300$	$\varnothing 8/3/8''$

PRECISION GRANITE COMPARATOR STAND

WITH CAST IRON ANVIL



- ⚙️ • Rapid positioning with coarse adjustment
- Heavy duty upright column and adjustable support arm ensure the high stability
- ✂️ • Upright column is made stainless steel and precision ground
- Round cast iron base

Unit:mm

Code	Pole	Base	Dia. of Clam Hold
7712-0005	$\varnothing 25 \times 180$	$\varnothing 60$	$\varnothing 8/3/8''$
7712-0030	$\varnothing 25 \times 180$	80x80	$\varnothing 8/3/8''$



PRECISION MEASURING TABLE WITH CERAMIC ANVIL



- Strong cast iron base with rigid column and sturdy indicator holder
- Indicator holder $\varnothing 8$ mm
- The table is of high-quality ceramic, lapped
- $Ra \leq 0.1 \mu m$

Unit:mm

Code	Pole	Base	Dia. of Clam Hold	Weight
7712-0020	$\varnothing 25 \times 180$	$\varnothing 60$	$\varnothing 8/3/8^*$	1.6kg
7712-0025	$\varnothing 25 \times 180$	80x80	$\varnothing 8/3/8^*$	2.5kg

HEAVY DUTY PRECISION BENCH CENTER



- Used to make fast and precise checks of runout on cylindrical/tapered parts
- Base and center-stocks are made of stress-relieved and aged cast iron
- Centers are made of hardened and precision ground steel
- Extra heavy duty adjustable indicator holder included
- Quick release centers, #2 Morse taper centers
- Head stock can be adjusted lengthwise and locked securely in any position by special lever type handle

Unit:mm

Code	Distance between two centers	Center height	Range	Accuracy	
				Parallelism(μm)	Verticality(μm)
7851-0005	200	100	$\varnothing 200$	≤ 8	≤ 5
7851-0006	300	100	$\varnothing 200$	≤ 8	≤ 5
7851-0007	300	170	$\varnothing 340$	≤ 8	≤ 5
7851-0008	300	300	$\varnothing 600$	≤ 8	≤ 5
7851-0009	500	170	$\varnothing 340$	≤ 8	≤ 5
7851-0011	500	300	$\varnothing 600$	≤ 8	≤ 5
7851-0013	1000	300	$\varnothing 600$	≤ 10	≤ 8
7851-0014	1500	250	$\varnothing 500$	≤ 20	≤ 16
7851-0015	2000	230	$\varnothing 460$	≤ 30	≤ 20
7851-0016	2500	300	$\varnothing 560$	≤ 30	≤ 30