

WELDING GAUGE

BORN IN ITALY, RAISED BY THE WORLD

MARKING BLACK

Precision Layout Solution

- **BLACK ANODIZED**
Protective anti-rust coating
- **CNC MACHINED**
High accuracy & High repeatability & Grounded measuring face



Gage Holes
Measure the Major Diameter of Bolt



Gage Holes
Select Right Size Drills



Pitch Size
Measure the Thread



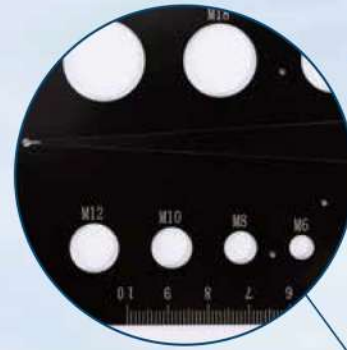
Bolt Length
Measure Length



Gage Leg
Quick-Check Perpendicularity



Slot Size
Measure Bore Diameter



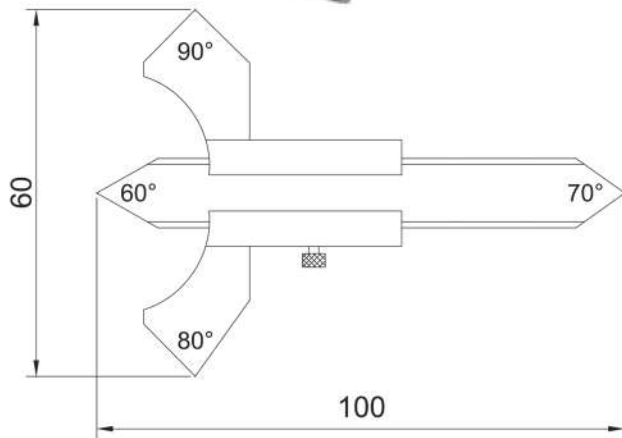
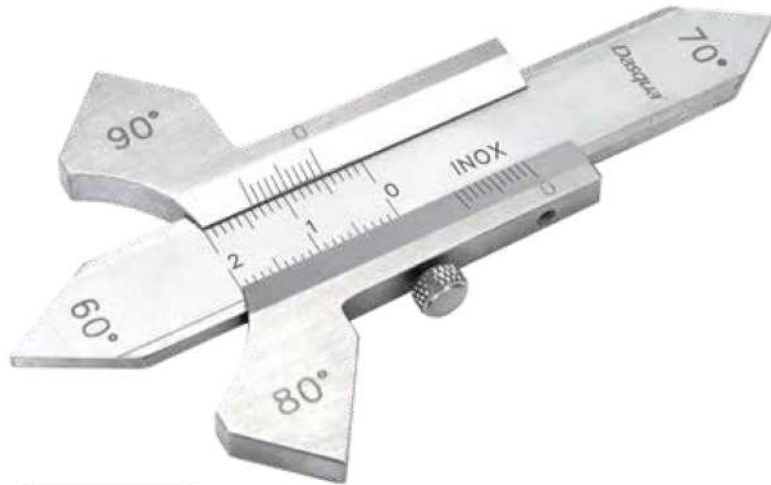
- **LASER-ENGRAVING SCALE**
Black lines & figures against the sand blasted finish



Code	Product	Style	Size	Pitches	Hole Dia. For Bolt	Slot for Wire and Washer	Remark
8511-0065	Multigauge single piece	Metric	90mm*170mm*1.25mm	0.3mm-3.0mm	M3 - M20	0.8mm - 2.5mm	Can be ordered independently
8511-0066		Inch	3.5"*6.7"*0.05"	10 - 40TPI	No 5-3/4"	0.024" - 0.25"	
1804-1405	Marking Black set	Metric	/	/	/	/	Combination Kit
1804-1406		Inch					



WELDING GAUGE

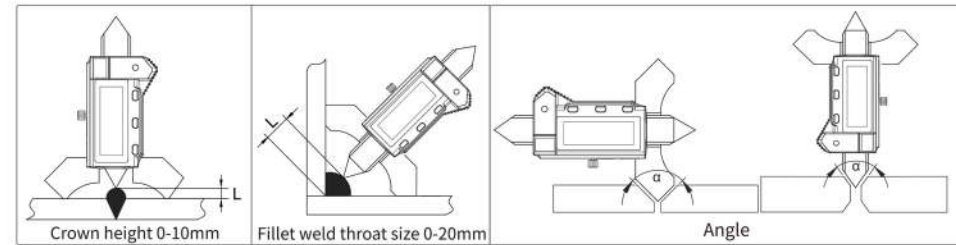


- Used to check the height of weld seam, thickness of fillet weld, bevel angle, etc
- Made of stainless steel, polished
- Measuring range: 20mm
- Slide with clamping screw

Unit:mm

Code	Angles	Range*Graduation
8531-0005	60°,70°,80°,90°	20x0.1

DIGITAL WELDING GAUGE



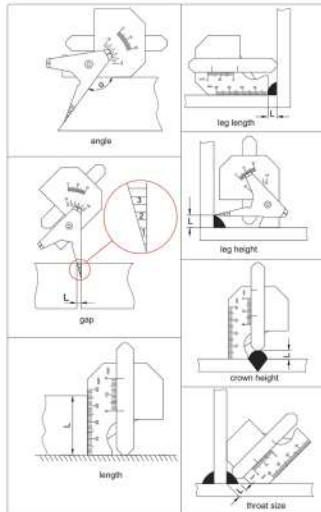
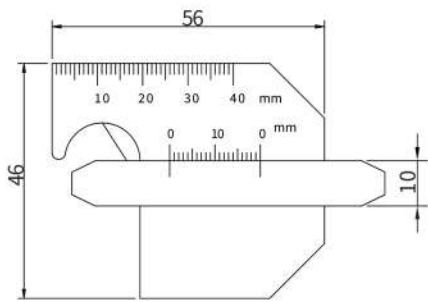
- 60° 70° 80° 90° angle measuring
- Seam crown height inspection
- Fillet weld throat size inspection
- Made of stainless steel, hardened and ground
- LCD display with clear reading, zero-setting at any position
- On/Off button, reading switchable mm/inch
- With data output

Unit:mm

Code	Range	Resolution	Accuracy
8530-1005	0-10/0-20	0.01/0.0005"/1/128"	±0.03



WELDING GAUGE

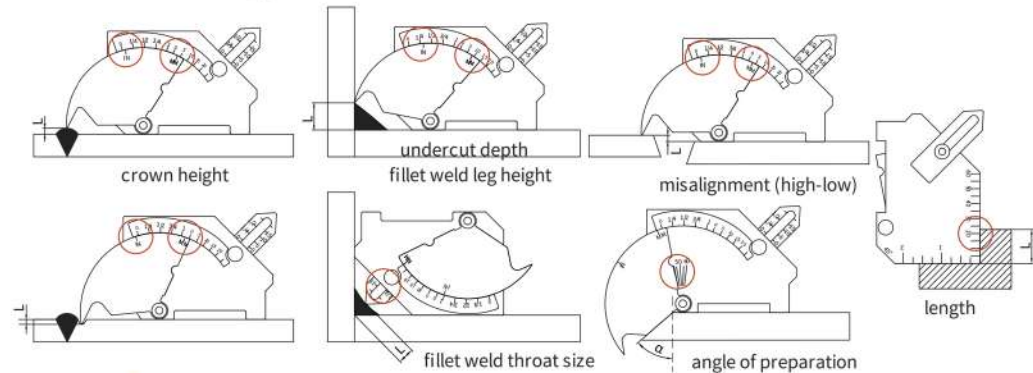
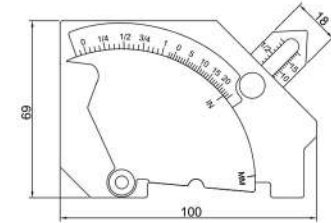


- Automatic weld size measuring
- For accurate calibration of butt and fillet type welds
- Check the throat of fillet weld to determine the leg size of the fillet weld
- Made of stainless steel, hardened and ground
- Stain chrome plated surface

Unit:mm

Code	Measurement	Range	Graduation	Accuracy
8511-0015	Leg Length	0-10	1	±0.5
	Leg Height	0-20	1	±0.5
	Crown Height	0-10	1	±0.5
	Throat size	0-10	1	±0.5
	Angle	90°-150°	5°	±1°
	Gap	1-3	1	±0.5
	Length	0-40	1	±0.5

BRIDGE CAM WELDING GAUGE



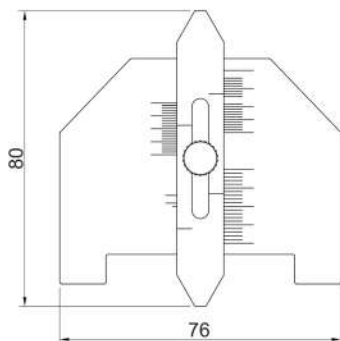
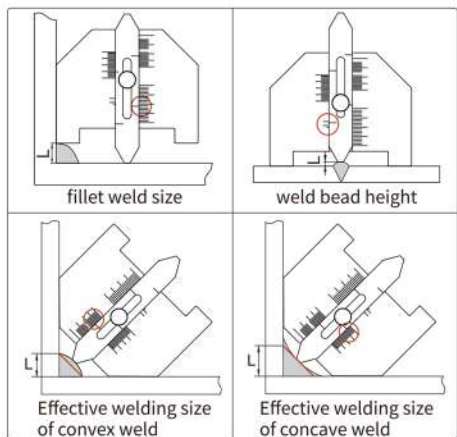
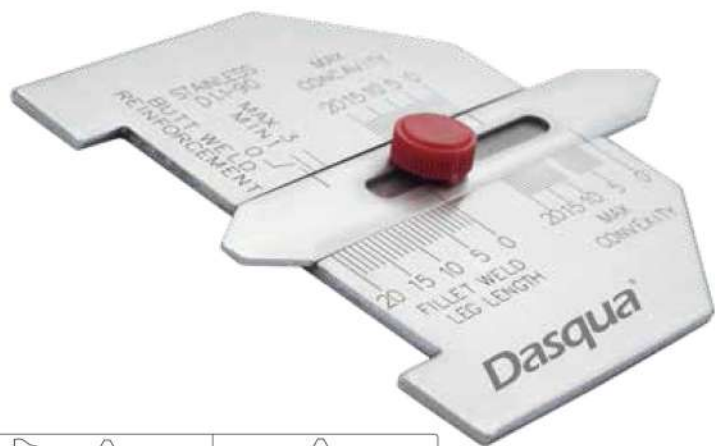
- Bridge cam gauge is a unique, versatile instrument for the inspection of welded surfaces and joints
- Made of high quality stainless steel, this gauge is durable and not easily scratched
- Gauge surface is clearly laser etched which is wear-resisting and ensures a clear reading
- Used to measure angle of preparation(0 to 60degree), excess weld metal (capping size), depth of undercut, fillet weld throat size, fillet leg length, misalignment (high-low), and linear measurements up to 50mm(2 inches)
- Stain chrome finish surface

Unit:mm

Code	Measurement	Range	Graduation	Accuracy
8511-0030	Crown height	0-25(0-1")	1(1/16")	±0.5
	fillet weld leg height	0-25(0-1")	1(1/16")	±0.5
	misalignment(high-low)	0-25(0-1")	1(1/16")	±0.5
	undercut depth	0-2(0-1/8")	1(1/16")	±0.5
	fillet weld throat size	0-20(0-3/4")	1(1/16")	±0.5
	angle of preparation	0-60°	5°	±1°
	Length	0-60(0-2")	1(1/16")	±0.5

WELDING GAUGE

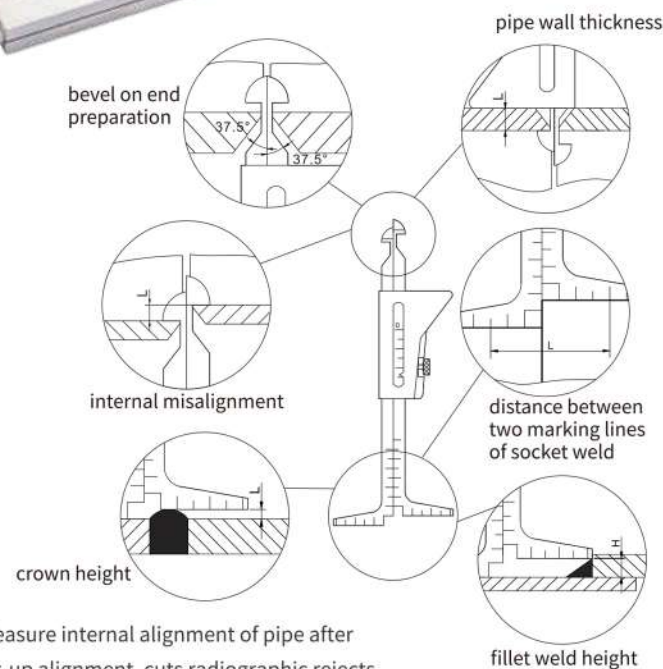
WELDING GAUGE



- For accurate calibration of butt and fillet type welds
- | • Used to measure reinforcement, fillet convexity / concavity throat and leg length
- Made of stainless steel, hardened and ground
- | • Stain chrome finish surface

Unit:mm

Code	Measurement	Range	Graduation	Accuracy
8511-0020	fillet weld size	0-20	1	±0.5
	weld bead height	0-3	-	±0.5
	Effective welding size of convex weld	0-20	1	±0.5
	Effective welding size of concave weld	0-20	1	±0.5

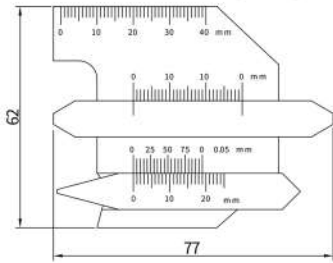


- Measure internal alignment of pipe after fit-up alignment, cuts radiographic rejects
- Measure internal misalignment of pipe before and after tacking
- | • With opposite movable measuring jaws
- For pipe welds up to 35 mm wall thickness
- | • Made of stainless steel, hardened and ground, polished surfaces
- | • With reading window, with fixing screw

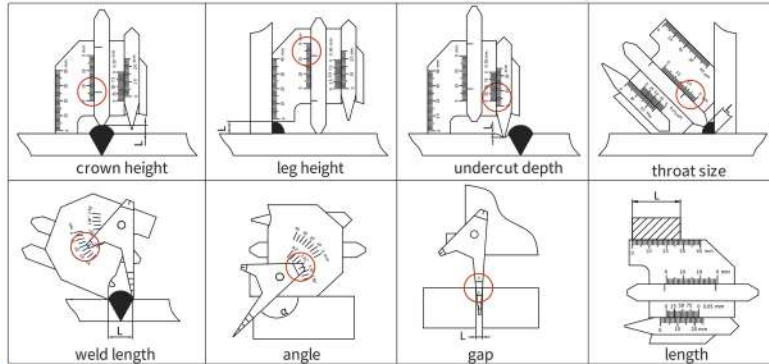
Code	Measurement	Range	Graduation	Accuracy
8511-0025	bevel on end preparation	37.5°	-	±1°
	pipe wall thickness	0-45(0-1-3/4")	1(1/16")	±0.5
	internal misalignment	0-30(0-1-1/4")	1(1/32")	±0.5
	crown height	0-35(0-1-3/8")	1(1/32")	±0.5
	distance between two marking lines of socket weld	11-61(7/16"-2-13/32")	1(1/16")	±0.5
	fillet weld height	0-30(0-1-1/4")	1(1/32")	±0.5



WELDING GAUGE



● 8511-0035



- ⚙️ • Used for the measurement of the bevel angle, height, width, gap and undercut depth of weld
- Suitable for the detection of boilers, bridges, ships, pressure vessels and oil pipes
- ✂️ • The gauge consists of four components: main scale, height gauge, undercut depth gauge and multiple-purpose gauge
- 🏆 • Made of stainless steel, hardened and ground
- Stain chrome finish surface

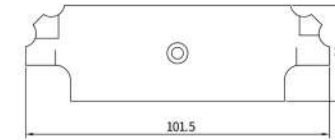
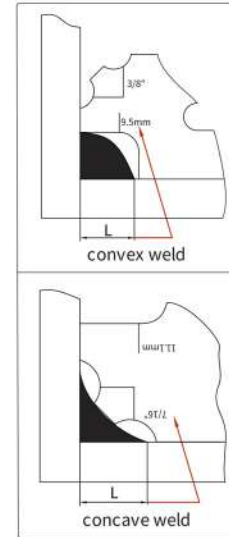
Unit:mm

Code	Measurement	Range	Graduation	Accuracy
8511-0035	crown height	0-10	1	±0.5
	leg height	0-15	1	±0.5
	undercut depth	0-5	0.05	±0.05
	throat size	0-13	1	±0.5
	weld length	0-40	1	±1
	angle	90°-150°	5°	±1°
	gap	1-5	2	±1
	length	0-40	1	±0.5
8511-0040	crown height	0-15	1	±0.5
	leg height	0-15	1	±0.5
	undercut depth	0-5	0.05	±0.05
	throat size	0-13	1	±0.5
	weld length	0-60	1	±1
	angle	80°-160°	5°	±1°
	gap	1-5	2	±1
	length	0-50	1	±0.5

FILLET WELDING GAUGE



● 8511-0050



- ⚙️ • Permits quick and accurate measuring of the most popular weld fillet sizes in imperial: 1/8"-1" and metric: 3.2mm-25.4mm
- ✂️ • All sizes and numbers are etched into the surface for clear and easier reading
- Check convex & concave weld
- 🏆 • 7 blades are included
- Made of stainless steel
- Stain chrome finish surface

Unit:mm

Code	Size	Accuracy
8511-0045	3,4,5,6,8,9,10,11,12,14,16,19,22,25	±0.5mm
8511-0050	1/8"(3.2),3/16"(4.8),1/4"(6.4),5/16"(7.9),3/8"(9.5),7/16"(11.1),	±0.02"(0.5)
	1/2"(12.7),5/8"(15.9),3/4"(19.1),7/8"(22.2),1"(25.4)	