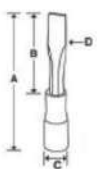


## FLAT TIP AND PHILLIPS® TIP BIT SOCKETS



SW32E

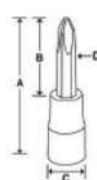


### — Flat Tip/Standard, Chrome (1/2")

	Stock No.	A	B	C	D
7/16 x .050	SW28E	3-7/32	1-23/32	29/32	SW28E2A
1/2 x .075	SW32E	3-7/32	1-23/32	29/32	SW32E2A
5/8 x .093	SW40E	3-51/64	2-1/4	29/32	SW40E2A



SP32E



### + PHILLIPS®/Standard, Chrome (1/2")

	Stock No.	A	B	C	D
#3	SP32E	2-21/64	53/64	29/32	SP32E2
#4	SP42E	2-15/32	31/32	29/32	SP42E2

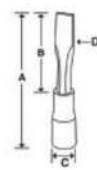
## IMPACT DRIVERS AND SETS



PIT160



PIT3120EB



PIT3120EB  
Set Contains:

### Impact Driver Set (1/2")

Stock No.	Description	Size	A	B	C	D	
PIT160	1/2" Drive Impact Driver	—	—	—	—	—	•
A26A	1/2" Drive 3/4" Blade Width Drag Link Socket	—	3/4	.109	1-11/16	—	•
SA10E	1/2" Drive SAE 5/16" Standard Hex Bit Socket Driver	5/16	2-29/64	61/64	29/32	FA10E2	•
SA12E	1/2" Drive SAE 3/8" Standard Hex Bit Socket Driver	3/8	2-21/32	1-9/64	29/32	SA12E2	•
SA14E	1/2" Drive SAE 7/16" Standard Hex Bit Socket Driver	7/16	2-13/16	1-5/16	29/32	SA14E2	•
SA16E	1/2" Drive SAE 1/2" Standard Hex Bit Socket Driver	1/2	3-1/8	1-5/8	29/32	SA16E2	•
SA18E	1/2" Drive SAE 9/16" Standard Hex Bit Socket Driver	9/16	3-15/64	1-21/32	1-1/32	SA18E2	•
SA20E	1/2" Drive SAE 5/8" Standard Hex Bit Socket Driver	5/8	3-13/32	1-41/64	1-11/64	LAW120E2	•
SP32E	1/2" Drive #3 PHILLIPS® Standard Bit Socket Driver	#3	2-21/64	53/64	29/32	SP32E2	•
SP42E	1/2" Drive #4 PHILLIPS® Standard Bit Socket Driver	#4	2-15/32	31/32	29/32	SP42E2	•
SW28E	1/2" Drive 7/16" Flat Tip Standard Bit Socket Driver	7/16 x .050	3-7/32	1-23/32	29/32	SW28E2A	•
SW32E	1/2" Drive 1/2" Flat Tip Standard Bit Socket Driver	1/2 x .075	3-7/32	1-23/32	29/32	SW32E2A	•
KRA142B	Metal Storage Case	—	—	—	—	—	•

#### PIT160 1/2" Drive Impact Driver

- This 1/2" drive unit delivers cam action impact when struck with a hammer

#### PIT3120EB 12 pc 1/2" Drive Impact Driver Set

- PIT160 Impact Driver plus sockets and socket drivers (12 pc) in KRA142B Metal Storage Case

## Extensions

- Ideal for use on transmission bellhousing bolts, transaxle and suspension service
- Pull-back collar for fast and easy attachment and removal of sockets
- Knurled release collar provides easy one-hand operation
- Single body construction for maximum strength and locking mechanism specifically for impact use
- Female drive end recessed to accommodate newer style impact guns

## Extensions/Locking

Stock No.	Description	A	B	
IMXL32	1/2" Drive 3-1/2" Locking Impact Extension	5/8	3-1/2	•
IMXL52	1/2" Drive 5" Locking Impact Extension	5/8	5	•
IMXL102	1/2" Drive 10" Locking Impact Extension	5/8	10	•

Set includes storage tray

Set Contains:  
303IMXL



## Extensions/Snap Ring Retention, Industrial

Stock No.	Description	A	B
IMX32B	1/2" Drive 3" Snap Ring Impact Extension	5/8	3
IMX52	1/2" Drive 5-3/32" Snap Ring Impact Extension	21/32	5-3/32
IMX112	1/2" Drive 11-1/4" Snap Ring Impact Extension	21/32	11-1/4

### 304IMX 4 pc 1/2" Drive Impact Extension Set

- Includes IMX32B-IMX112 (3-11-1/4") and IP80D 1/2" Drive Swivel Ball Lock Button Impact Universal Joint in a storage tray
- Snap-on® impact extensions are heat-treated to optimize impact service life with a lower hardness and able to withstand repeated cycling loads of impact wrenches
- Snap-on uses a proprietary blend of special alloy steel that provides long life and great strength



## Extension Adaptor

Stock No.	A	B	C	D
IMXA42	3/8	1/2	1/2	4



## Universal Joints (Impact)

Stock No.	Socket Attachment	A	B
IP800	Ball Type	1-1/4	2-3/4
IP80D	Pin Type	1-1/4	2-3/4

### 202IP 2 pc Combination Drive Impact Universal Joint Set

- Includes IPF800B 3/8" Drive Friction Ball Swivel Ball Impact Universal Joint and IP80D 1/2" Drive Swivel Ball Lock Button Impact Universal Joint in a storage tray



## Swivel Extensions (1/2")

- Laser-welded pivot pin allows smooth, full 30° swivel action for efficient power transfer
- Manufactured from special alloy steel and heat treated for optimum strength and durability
- Provides versatility for the technician as they can use any shallow, semi-deep, deep, 6-point, 12-point, metric or SAE impact socket, and are not limited to just one size

### IPXS6 1/2 Drive 6" Swivel Impact Extension

- Removes and installs bolts/nuts with a 1/2" impact gun
- Technician can use any shallow, semi-deep, deep, 6-point, 12-point, metric or SAE impact socket with this extension
- Employs friction ball socket retention method



### IPXSL6 1/2 Drive 6" Swivel Impact Pinned Extension

- Removes and installs bolts/nuts with a 1/2" impact gun
- Technicians can use any shallow, semi-deep, 6-point, 12-point, metric or SAE impact socket with this extension
- Laser welded pivot pin allows smooth, full 30° swivel action for efficient power transfer
- Employs lock button engagement in side lock holes of socket ensuring positive retention

- Do not use chrome or industrial finish hand tools with power drivers or impact drivers.
- Wear safety goggles while using impact drivers.
- Do not hold swivel joint during use.
- Read Safety Precautions on pages W1-W4

**WARNING**



# FLANK DRIVE® IMPACT SOCKETS

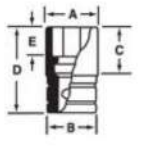
1/2" DRIVE TOOLS



IMM150A



310IMMYA



## Shallow, mm

mm	Set Contains:		A	B	C	D	E				
	310IMMYA	312IMM						315IMMYA	315IMDMYA	6	6
10	IMM100A	IMDM100A	15.0	22.6	22.2	38.1	7.9	•		•	•
11	IMM110A	IMDM110A	18.2	22.6	22.2	38.1	8.7	•		•	•
12	IMM120A	IMDM120A	19.0	24.3	22.2	38.1	9.5	•		•	•
13	IMM130A	IMDM130A	20.6	24.3	22.2	38.1	10.3	•		•	•
14	IMM140A	IMDM140A	22.2	24.3	22.2	38.1	10.3	•		•	•
15	IMM150A	IMDM150A	23.8	26.4	22.2	38.1	10.3	•	•	•	•
16	IMM160A	IMDM160A	24.6	26.4	22.2	38.1	11.9	•	•	•	•
17	IMM170A	IMDM170A	25.4	26.7	22.2	38.1	12.7	•	•	•	•
18	IMM180	IMDM180	26.7	26.7	19.1	38.1	12.7	•	•	•	•
19	IMM190	IMDM190	28.3	28.3	21.3	38.1	12.7	•	•	•	•
20	IMM200	IMDM200	29.9	29.9	21.1	38.1	14.2		•	•	•
21	IMM210	IMDM210	31.5	31.5	21.0	38.1	14.2		•	•	•
22	IMM220	IMDM220	33.3	33.3	21.4	38.1	15.9		•	•	•
23	IMM230	IMDM230	34.1	34.1	27.8	44.5	15.9		•	•	•
24	IMM240	IMDM240	34.9	34.9	27.8	44.5	15.9		•	•	•
25	IMM250	—	29.8	29.8	27.0	44.5	15.9		•		
26	IMM260	—	38.1	38.1	33.3	50.8	15.9				
27	IMM270	IMDM270	39.4	39.4	27.1	50.8	20.3		•		
29	IMM290	—	41.1	41.1	33.3	50.8	21.1				
30	IMM300	—	42.7	42.7	32.1	50.8	21.6				
32	IMM320	IMDM320	45.8	45.8	32.1	50.8	22.4				
34	IMM340	—	47.6	42.9	40.5	52.4	22.4				
36	IMM360	IMDM360	50.5	45.8	40.5	57.2	22.4				
39	—	IMDM390	53.8	39.6	36.8	50.8	22.3				
46	IMM460	—	64.8	47.6	50.3	69.9	29.7				

Sets include storage tray

ASME®/ANSI® B107.33M

### IMDM360 1/2" Drive 12-Point Metric 36 mm Flank Drive® Shallow Impact Socket

- Snap-on® impact sockets are heat-treated to optimize impact service life with a lower hardness than hand sockets and are able to withstand repeated cycling loads of impact wrenches
- Snap-on uses a proprietary blend of special alloy socket steel that provides long life and great strength
- Flank Drive® wrenching system delivers up to 20% more turning power without slipping or rounding while exceeding ANSI® performance standards
- Applications include the removal and installation of Duramax® Diesel front crankshaft bolt, late-model BMW® axle shafts, and 2003 GM® and 2004 Dodge® pinion nuts on trucks with 11.5 AAM axles

### IMDM320 1/2" Drive 12-Point Metric 32 mm Flank Drive® Shallow Impact Socket

- Applications include servicing axle nuts on 1992–1999 Mercedes-Benz® W140 chassis SC and SL Class; Porsche® Boxster®, Cayenne® and 944; plus 2007–later BMW® X3®, X5® and X6® Series vehicles
- Other uses include drive shaft nuts on 2003–later VW® Touareg® vehicles

### IMDM390 1/2" Drive 12-Point Metric 39 mm Flank Drive® Shallow Impact Socket

- Applications include the front axle hub of 2007 Toyota® Tundra® 4WD; and servicing inner rack and pinion nuts on BMW® X5® and X6® vehicles

### IMDM270 1/2" Drive 12-Point Metric 27 mm Flank Drive® Shallow Impact Socket

### IMDM410 1/2" Drive 12-Point Metric 41 mm Flank Drive® Shallow Impact Socket

- Applications include removal and installation of lower ball joint on 2013 current BMW® 5 and 7 Series vehicles
- 41 mm, 12-point, 1/2" drive



# FLANK DRIVE® IMPACT SOCKETS

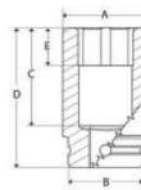
1/2" DRIVE TOOLS



IMD120A



311IMYA



## Shallow, inches

II	Set Contains:		A	B	C	D	E	311IMYA	
	6	12						6	12
3/8	IM120A	IMD120A	19/32	29/32	7/8	1-1/2	5/16	•	•
7/16	IM140A	IMD140A	23/32	29/32	7/8	1-1/2	11/32	•	•
1/2	IM160A	IMD160A	13/16	29/32	7/8	1-1/2	13/32	•	•
9/16	IM180A	IMD180A	7/8	29/32	7/8	1-1/2	13/32	•	•
5/8	IM200	IMD200	15/16	1	7/8	1-1/2	15/32	•	•
11/16	IM220	IMD220	1-1/16	1-1/16	3/4	1-1/2	1/2	•	•
3/4	IM240	IMD240	1-1/8	1-1/8	3/4	1-1/2	1/2	•	•
13/16	IM260	IMD260	1-1/4	1-1/4	3/4	1-1/2	1/2	•	•
7/8	IM280	IMD280	1-5/16	1-5/16	13/16	1-1/2	9/16	•	•
15/16	IM300	IMD300	1-3/8	1-3/8	1-1/16	1-3/4	3/4	•	•
1	IM320	IMD320	1-7/16	1-7/16	1-1/16	1-3/4	3/4	•	•
1-1/16	IM340	—	1-9/16	1-9/16	1	2	13/16		
1-1/8	IM360	IMD360	1-5/8	1-5/8	1	2	13/16		•
1-3/16	IM380	—	1-11/16	1-1/2	1-3/32	2	13/16		
1-1/4	IM400	IMD400	1-3/4	1-1/2	1-5/32	2	13/16		•
1-5/16	IM420H	—	1-7/8	1-1/2	1-3/8	2	7/8		
1-3/8	IM440	—	1-15/16	1-1/2	1-3/8	2	7/8		
1-7/16	IM460	—	2	1-1/2	1-3/8	2	15/16		
1-1/2	IM480	—	2-1/8	1-9/16	1-3/8	2	15/16		
1-9/16	IM500	—	2-1/4	1-5/8	1-11/16	2-5/16	15/16		

Sets include storage tray

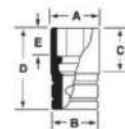
ASME®/ANSI® B107.2



IMMS240



312IMMS



## Semi-Deep, mm

mm	Set Contains:		A	B	C	D	E	312IMMS	
	6	6						6	6
10	IMMS100		15.1	23.0	39.1	56.4	7.1		
12	IMMS120		19.8	23.0	39.1	56.4	8.7		
13	IMMS130		21.4	23.0	39.1	56.4	9.5		
14	IMMS140		22.2	23.0	39.1	56.4	10.3		
15	IMMS150		23.8	23.0	27.7	56.4	10.3		•
16	IMMS160		24.6	24.6	31.2	56.4	11.9		•
17	IMMS170		25.4	25.4	31.1	56.4	11.1	•	•
18	IMMS180		27.0	27.0	31.1	56.4	12.7	•	•
19	IMMS190		28.6	28.6	30.9	56.4	13.5	•	•
20	IMMS200		30.2	30.2	30.7	56.4	13.5	•	•
21	IMMS210		31.8	31.8	30.7	56.4	13.5	•	•
22	IMMS220		33.3	33.3	35.0	60.3	13.5	•	•
23	IMMS230		34.1	34.1	35.0	60.3	15.9		•
24	IMMS240		34.9	34.9	35.0	60.3	15.1	•	•
25	IMMS250		36.5	36.5	34.4	60.3	15.9		•
27	IMMS270		39.7	39.7	34.4	60.3	19.8	•	•
30	IMMS300		42.9	42.9	37.5	63.5	21.4		
32	IMMS320		46.0	46.0	37.5	63.5	22.2		
34	IMMS340		44	52	51.5	70	22		
36	IMMS360		51	44	51.5	70	22		

Sets include storage tray

ASME®/ANSI® B107.33M



- Do not use chrome or industrial finish hand tools with power drivers or impact drivers.
- Read Safety Precautions on pages W1-W4

# FLANK DRIVE® IMPACT SOCKETS

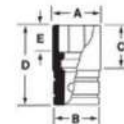
1/2" DRIVE TOOLS



IMS300



312IMS



## Semi-Deep, inches

Set Contains: 307IMS 312IMS

		A	B	C	D	E		
1/2	IMS160	27/32	29/32	1-17/32	2-7/32	3/8		•
9/16	IMS180	7/8	29/32	1-17/32	2-7/32	13/32	•	•
5/8	IMS200	31/32	31/32	1-7/32	2-7/32	15/32	•	•
11/16	IMS220	1-1/16	1-1/16	1-7/32	2-7/32	1/2	•	•
3/4	IMS240	1-1/8	1-1/8	1-3/16	2-7/32	17/32	•	•
13/16	IMS260	1-1/4	1-1/4	1-3/16	2-7/32	9/16	•	•
7/8	IMS280	1-5/16	1-5/16	1-3/8	2-13/32	5/8	•	•
15/16	IMS300	1-3/8	1-3/8	1-11/32	2-13/32	21/32	•	•
1	IMS320	1-7/16	1-7/16	1-11/32	2-13/32	23/32		•
1-1/16	IMS340	1-9/16	1-9/16	1-11/32	2-13/32	3/4		•
1-1/8	IMS360	1-5/8	1-5/8	1-7/16	2-1/2	25/32		•
1-1/4	IMS400	1-3/4	1-3/4	1-7/16	2-1/2	7/8		•

Sets include storage tray

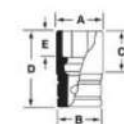
ASME®/ANSI® B107.2



SIMM340



310SIMMYA



## Deep, mm

Set Contains: 305SIMMY 310SIMMYA 310SIMMADDDON 312SIMM 315SIMMYA 325SIMM 312SIMM

mm			A	B	C	D	E							
10	SIMM100A	SIMDM100	17.5	23.0	65.8	82.6	7.1		•			•	•	
11	SIMM110A	SIMDM110	18.3	23.0	65.8	82.6	7.9		•			•	•	
12	SIMM120A	SIMDM120	19.8	23.0	65.8	82.6	8.7		•			•	•	
13	SIMM130A	SIMDM130	21.4	23.0	65.8	82.6	9.5		•			•	•	
14	SIMM140A	SIMDM140	22.2	23.0	65.8	82.6	10.3		•			•	•	
15	SIMM150A	SIMDM150	23.8	23.8	54.3	82.6	10.3		•		•	•	•	
16	SIMM160A	SIMDM160	24.6	24.6	58.4	82.6	11.9		•		•	•	•	
17	SIMM170	SIMDM170	25.4	25.4	58.5	82.6	11.1		•		•	•	•	
18	SIMM180	SIMDM180	27.0	27.0	58.5	82.6	12.7		•		•	•	•	
19	SIMM190	SIMDM190	28.6	28.6	58.3	82.6	13.5		•		•	•	•	
20	SIMM200	SIMDM200	30.2	30.2	57.9	82.6	13.5				•	•	•	
21	SIMM210	SIMDM210	31.8	31.8	57.9	82.6	13.5				•	•	•	
22	SIMM220	SIMDM220	33.3	33.3	53.9	88.9	13.5				•	•	•	
23	SIMM230	SIMDM230	34.1	34.1	63.9	88.9	15.9				•	•	•	
24	SIMM240	SIMDM240	34.9	34.9	63.5	88.9	15.9				•	•	•	
25	SIMM250	SIMDM250	36.5	36.5	63.4	88.9	15.9			•	•	•	•	
26	SIMM260	—	38.1	38.1	63.4	88.9	15.9			•		•	•	
27	SIMM270	SIMDM270	39.7	39.7	63.4	88.9	19.8			•		•	•	
28	SIMM280A	—	41.3	41.3	72.5	89.7	20.6					•	•	
29	SIMM290	SIMDM290	41.3	41.3	63.4	89.7	20.6	•		•		•	•	
30	SIMM300	SIMDM300	42.9	42.9	63.4	89.7	21.4	•		•		•	•	
32	SIMM320	SIMDM320	46.0	46.0	63.4	89.7	22.2			•		•	•	
33	SIMM330	SIMDM330	46.0	46.0	72.5	89.7	22.2			•		•	•	
34	SIMM340	SIMDM340	49.3	49.3	72.8	88.9	22.6	•		•		•	•	
35	SIMM350	SIMDM350	50.8	50.8	72.8	88.9	22.9	•		•		•	•	
36	SIMM360	SIMDM360	50.8	50.8	72.8	88.9	22.9	•		•		•	•	

Sets include storage tray

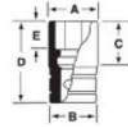
ASME®/ANSI® B107.33m



SIMD300A



313SIMA



## Deep, inches

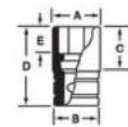
Depth (inches)	Set Contains:											
	6	12	19/32	29/32	2-9/16	3-1/4	9/32	6	6	6	6	12
3/8	SIM120A	—	19/32	29/32	2-9/16	3-1/4	9/32	•		•		
7/16	SIM140A	—	23/32	29/32	2-9/16	3-1/4	5/16	•		•		
1/2	SIM160A	SIMD160A	27/32	29/32	2-9/16	3-1/4	3/8		•	•	•	•
9/16	SIM180A	SIMD180A	7/8	29/32	2-9/16	3-1/4	13/32		•	•	•	•
5/8	SIM200	SIMD200A	31/32	31/32	2-9/32	3-1/4	15/32		•	•	•	•
11/16	SIM220	SIMD220A	1-1/16	1-1/16	2-9/32	3-1/4	1/2		•	•	•	•
3/4	SIM240	SIMD240A	1-1/8	1-1/8	2-9/32	3-1/4	17/32		•	•	•	•
13/16	SIM260	SIMD260A	1-1/4	1-1/4	2-1/4	3-1/4	19/32		•	•	•	•
7/8	SIM280	SIMD280A	1-5/16	1-5/16	2-1/2	3-1/2	17/32		•	•	•	•
15/16	SIM300	SIMD300A	1-3/8	1-3/8	2-1/2	3-1/2	23/32		•	•	•	•
1	SIM320	SIMD320A	1-7/16	1-7/16	2-15/32	3-1/2	3/4		•	•	•	•
1-1/16	SIM340	SIMD340A	1-9/16	1-9/16	2-15/32	3-17/32	25/32		•	•	•	•
1-1/8	SIM360	SIMD360A	1-5/8	1-5/8	2-15/32	3-17/32	25/32		•	•	•	•
1-3/16	SIM380	SIMD380A	1-11/16	1-11/16	2-15/32	3-17/32	25/32		•	•	•	•
1-1/4	SIM400	SIMD400A	1-3/4	1-3/4	2-15/32	3-17/32	1		•	•	•	•
1-5/16	SIM420H	—	1-13/16	1-13/16	2-15/32	3-17/32	1	•		•		
1-3/8	SIM440	—	1-13/16	1-13/16	2-3/4	3-1/2	7/8	•		•		
1-7/16	SIM460	—	2	1-1/2	2-21/32	3-1/2	15/16	•		•		
1-1/2	SIM480	—	2-1/8	1-9/16	2-5/8	3-1/2	15/16	•		•		
1-9/16	SIM500	—	2-1/4	1-5/8	2-5/8	3-1/2	15/16	•		•		
1-5/8	SIM520	—	2-3/8	1-3/4	2-7/8	3-1/2	15/16					

Sets include storage tray  
ASME®/ANSI® B107.2

\*Does not include storage tray



311IMFSY



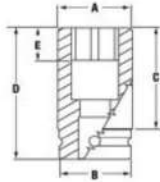
## Shallow/Thin Wall, inches

Depth (inches)	Set Contains:						
	6	19/32	7/8	3/8	1-1/2	7/32	6
3/8	IMFS120	19/32	7/8	3/8	1-1/2	7/32	•
7/16	IMFS140	11/16	7/8	9/16	1-1/2	11/32	•
1/2	IMFS160	3/4	7/8	5/8	1-1/2	3/8	•
9/16	IMFS180	13/16	7/8	11/16	1-1/2	13/32	•
5/8	IMFS200	29/32	29/32	3/4	1-1/2	15/32	•
11/16	IMFS220	1	1	13/16	1-1/2	1/2	•
3/4	IMFS240	1-1/16	1-1/16	13/16	1-1/2	1/2	•
13/16	IMFS260	1-1/8	1-1/8	25/32	1-1/2	1/2	•
7/8	IMFS280	1-7/32	1-7/32	29/32	1-1/2	9/16	•
15/16	IMFS300	1-5/16	1-5/16	1-3/16	1-17/32	3/4	•
1	IMFS320	1-3/8	1-3/8	1-3/16	1-9/16	3/4	•
1-1/16	IMFS340	1-7/16	1-7/16	1-1/4	1-11/16	13/16	
1-1/8	IMFS360	1-1/2	1-1/2	1-1/4	1-3/4	13/16	
1-3/16	IMFS380	1-5/8	1-5/8	1-1/4	1-3/4	13/16	
1-1/4	IMFS400	1-11/16	1-11/16	1-1/4	1-7/8	13/16	
1-5/16	IMFS420	1-3/4	1-3/4	1-1/4	1-7/8	13/16	
1-3/8	IMFS440	1-13/16	1-13/16	1-1/4	2-1/16	13/16	
1-7/16	IMFS460	1-15/16	1-3/4	1-3/8	2-1/16	13/16	
1-1/2	IMFS480	2	2	1-3/8	2-1/16	13/16	

Set includes storage tray



- Wear safety goggles while using impact drivers.
- Read Safety Precautions on pages W1-W4

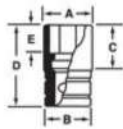


## Extra-Deep, mm

mm	Stock No.					
15	<b>SIMML150</b>	23.2	26.4	110.2	127.0	10.7
18	<b>SIMML180</b>	26.8	26.8	54.8	127.0	12.7

### SIMML180 1/2" Drive 6-Point Metric 18 mm Flank Drive® Extra-Deep Impact Socket

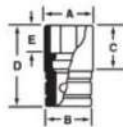
- Applications include the removal and installation of the fuel tank hold down strap on International® 4400 chassis
- The fuel tank must be removed to replace the fuel sending unit
- 5" long to reach through the frame to access the fastener without the need of an extension



## Extra-Deep, inches

- Applications include removing or replacing fuel tank retaining strap nuts
- Also has applications for emergency brake adjustment nuts and stabilizer retainers

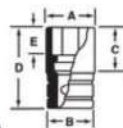
Hex	Hex 6				
1/2	<b>SIML160</b>	25/32	15/16	4-1/4	3/8
9/16	<b>SIML180</b>	7/8	15/16	4-1/4	13/32
5/8	<b>SIML200</b>	31/32	1	4-1/4	15/32
11/16	<b>SIML220</b>	1-1/16	1-1/16	4-1/4	1/2
11/16	<b>SIMDL220</b>	1-1/16	1-1/16	4-1/4	1/2
3/4	<b>SIML240</b>	1-1/8	1-1/8	4-1/4	9/16
13/16	<b>SIML260</b>	1-1/4	1-1/4	4-1/4	19/32
7/8	<b>SIML280</b>	1-5/16	1-5/16	4-1/4	21/32
15/16	<b>SIML300</b>	1-3/8	1-3/8	4-1/4	23/32
1	<b>SIML320</b>	1-7/16	1-7/16	4-3/8	3/4
1-1/16	<b>SIML340</b>	1-9/16	1-9/16	4-5/32	25/32
1-1/8	<b>SIML360</b>	1-5/8	1-5/8	4-1/8	25/32
1-1/4	<b>SIML402</b>	1-3/4	1-3/4	5-1/8	1



## Extra-Deep/Thin Wall, mm

- Sockets are 34% thinner than a standard thin wall socket
- Used to access the nut on long studs and other hard-to-reach areas
- Ideal for wheel lugs

mm	Stock No.					
14	<b>SIMMF14A</b>	20.6	23.8	50.8	76.2	25.4
17	<b>SIMMF17A</b>	23.8	23.8	50.8	76.2	25.4
21	<b>SIMMF21A</b>	28.6	28.6	50.8	76.2	25.4
22	<b>SIMMF22A</b>	30.2	30.2	50.8	76.2	25.4



## Deep/Thin Wall, mm

mm	Stock No.					
19	<b>SIMMF19A</b>	26.2	28.6	40.5	76.2	19
36	<b>SIMDM360TW</b>	47.2	44.5	72.8	88.9	22.9

### SIMDM360TW 1/2" Drive 6-Point Metric 36 mm Flank Drive® Deep Pinion Flange Nut Impact Socket

- Thin-wall design provides extra room needed to remove and install the differential pinion flange nut on the 2012 Chevrolet® Camaro® (USA) and Holden Commodore (Australia) vehicles



307RIPLMY

## Low Profile Swivel, mm

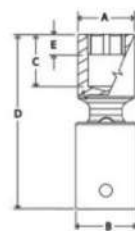
Set Contains:

mm	6						6
14	RIPLM14C	21.2	26.7	7.2	53.1	6.7	•
15	RIPLM15C	23.0	31.4	7.7	60.4	6.7	•
17	RIPLM17C	25.2	31.4	8.6	61.9	7.6	•
18	RIPLM18C	26.4	31.4	9.0	61.9	8.0	•
19	RIPLM19C	26.8	31.4	9.5	63.5	8.5	•
21	RIPLM21C	30.0	31.4	10.1	64.7	9.2	•
24	RIPLM24C	34.0	31.4	11.6	67.3	10.6	•

Sets include storage tray



RIPLM14C



312IPLM

## Shallow Swivel, mm

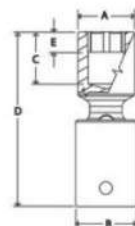
Set Contains:

mm	6	12						6	6
18	IPLM10C	—	15.5	26.8	26.8	69.3	9.7	•	
11	IPLM11C	—	17.5	26.8	26.8	69.3	9.7	•	
12	IPLM12C	IPDLM12	18.0	26.8	26.8	69.3	9.7	•	
13	IPLM13C	IPDLM13A	19.7	26.8	26.8	69.3	9.7	•	
14	IPLM14C	—	21.3	26.8	26.8	69.3	9.7	•	•
15	IPLM15C	—	23.0	31.9	31.9	69.3	9.7	•	•
16	IPLM16C	IPDLM16A	24.4	31.9	31.9	71.1	10.4	•	
17	IPLM17C	IPDLM17A	25.3	31.9	31.9	71.1	10.4	•	•
18	IPLM18C	IPDLM18A	26.5	31.9	31.9	71.1	10.4	•	•
19	IPLM19C	—	26.8	31.9	31.9	71.1	11.2	•	•
21	IPLM21C	—	30.0	31.9	31.9	71.1	12.7	•	•
22	IPLM22C	—	32.4	31.9	31.9	74.4	14.2	•	
24	IPLM24C	—	34.0	31.9	31.9	74.4	15.0	•	•

Sets include storage tray.



IPDLM12

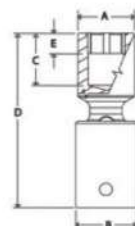


## Deep Swivel, inches

	6				
9/16	SIP18A	7/8	1-1/16	1-1/16	3-1/2
3/4	SIP24A	1-1/16	1-1/16	1-1/16	3-31/32



SIP18A



- Do not use chrome or industrial finish hand tools with power drivers or impact drivers.
- Wear safety goggles while using impact drivers.
- Do not hold swivel joint during use.
- Read Safety Precautions on pages W1-W4

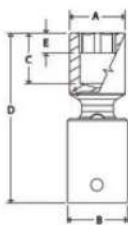


# FLANK DRIVE® IMPACT SWIVEL SOCKETS

1/2" DRIVE TOOLS



IPSM21



## Semi-Deep Swivel, mm

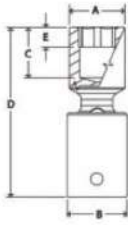
mm	6					
15	IPSM15	23.0	31.9	31.9	31.9	80.6
18	IPSM18	26.5	31.9	31.9	31.9	82.4
21	IPSM21	30.0	31.9	31.9	31.9	82.4
22	IPSM22	32.4	31.9	31.9	31.9	82.4



307RIPLY



RIPL18C



## Low Profile Swivel, inches

	6							6
9/16	RIPL18C	27/32	1-1/16	5/16	2-3/16	1/4	1/4	•
5/8	RIPL20C	31/32	1-1/4	11/32	2-5/16	1/4	1/4	•
11/16	RIPL22C	1-1/16	1-1/4	11/32	2-7/16	5/16	5/16	•
3/4	RIPL24C	1-1/8	1-1/4	3/8	2-19/32	11/32	11/32	•
7/8	RIPL28C	1-9/32	1-1/4	7/16	2-27/32	7/16	7/16	•
15/16	RIPL30C	1-11/32	1-1/4	15/32	2-13/16	7/16	7/16	•
1-1/8	RIPL36C	1-9/16	1-1/4	17/32	3	1/2	1/2	•

Set Contains:

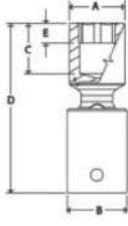
Set includes storage tray



312IPL



IPL20C



## Shallow Swivel, inches

	6	12						6	6
1/2	IPL16C	IPDL16	25/32	1-1/32	1-1/32	2-3/4	5/16	•	•
9/16	IPL18C	—	27/32	1-1/32	1-1/32	2-3/4	5/16	•	•
5/8	IPL20C	IPDL20	31/32	1-1/16	1-1/16	2-3/4	5/16	•	•
11/16	IPL22C	—	1-1/16	1-1/16	1-1/16	2-13/16	13/32	•	•
3/4	IPL24C	—	1-1/8	1-1/16	1-1/16	2-13/16	7/16	•	•
13/16	IPL26C	—	1-3/16	1-1/16	1-1/16	2-13/16	1/2	•	•
7/8	IPL28C	—	1-9/32	1-1/16	1-1/16	2-15/16	17/32	•	•
15/16	IPL30C	—	1-11/32	1-1/16	1-1/16	2-15/16	19/32	•	•
1	IPL32C	—	1-11/32	1-1/16	1-1/16	2-15/16	21/32	•	•
1-1/16	IPL34C	—	1-7/16	1-1/16	1-1/16	2-15/16	11/16	•	•
1-1/8	IPL36C	—	1-9/16	1-1/16	1-1/16	3-1/8	3/4	•	•
1-3/16	IPL38C	—	1/16	1-1/4	1-1/4	3-3/8	23/32	•	•
1-1/4	IPL40C	—	1-5/8	1-1/16	1-1/16	3-3/16	25/32	•	•
1-5/16	IPL42C	—	1-3/4	1-1/16	1-1/16	3-3/16	7/8	•	•

Set Contains:

Sets include storage tray.



IMSLE180

IMSLE200

IMSLE240



305TTWYA

305TTWYA  
Set Contains:

## TORX®/Shallow Impact

#	Stock No.			
E18	IMSLE180	29/32	29/32	1-1/2
E20	IMSLE200	15/16	15/16	1-1/2
E24	IMSLE240	1-1/16	1-1/16	1-1/2

### IMSLE180 1/2" Drive TORX® E18 Shallow Impact Socket

- Remove and install brake rotor bolts on 2000–newer F550® Super Duty

### IMSLE200 1/2" Drive TORX® E20 Shallow Impact Socket

- Various applications on Mercedes® and BMW® vehicles; heavy-duty trucks with Mercedes® engines and rear brake caliper bolts on BMW® X5®

### IMSLE240 1/2" Drive TORX® E24 Shallow Impact Socket

- Used for front axle nut on M, C, E and S Class Mercedes-Benz® vehicles

## Twist/Shallow, inches

#	Stock No.					
3/4	TTWY241A	1-1/32	1	1	1-5/8	•
13/16	TTWY261A	1-1/8	1	1	1-5/8	•
7/8	TTWY281A	1-3/16	1-1/16	1	1-5/8	•
15/16	TTWY301A	1-1/4	1-3/16	1	1-5/8	•
1	TTWY321A	1-5/16	1-1/4	1	1-5/8	•

Set includes storage tray

### 305TTWYA 5 pc 1/2" Drive SAE Shallow Twist Impact Socket Set (Blue-Point®)

- Includes TTWY241A–TTWY321A (3/4–1")
- Removes rounded or damaged fasteners with almost any head configuration (hex, round, square and more)
- Can be used with an impact wrench
- Manufactured from heat-treated alloy steel
- Black industrial finish

## Low-Profile TORX Plus® Impact (1/2")

### IMSLEPL240 1/2" Drive 24EPL TORX Plus® Low-Profile Impact Socket

- Impact-rated TORX Plus® socket
- Low-profile geometry for use with low-profile fasteners
- Manufactured from special steel with higher alloy content
- Industrial finish helps protect against corrosion
- Precision machined and heat-treated for optimum strength and durability



IMSLEPL240

## Shackle Pin

### SPS10A 1/2" Drive SAE 41/64" Shackle Pin Impact Socket

- Designed with an oval configuration to service shackle pins on International® and Kenworth® semitrucks

### SPS11A 1/2" Drive SAE 21/32 x 1-17/32" Shackle Pin Impact Socket

- Socket opening is 21/32 x 1-17/32"; 1-3/4" long

### SPS12 1/2" Drive SAE 3/4 x 1-9/32" Shackle Pin Impact Socket

- For use on Freightliner® 120 Series and trucks with newer large spring bolts
- Impact rated 1/2" drive
- Socket opening is 3/4 x 1-9/32"; 1-3/4" long



SPS10A

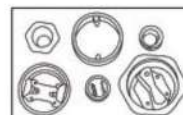


A172A

## Drum Plug Socket

### A172A 1/2" Drive Drum Plug Socket

- One socket removes virtually all screw-in drum plugs or caps
- Spring-loaded inner wrench handles smaller plugs and recesses automatically when removing large plugs
- For use with a 1/2" drive ratchet or impact wrench



- Wear safety goggles while using impact drivers.
- Do not hold swivel joint during use.
- Read Safety Precautions on pages W1–W4



S6324

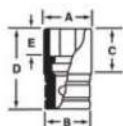
## Crankshaft Bolt Socket

### S6324 1/2" Drive 6-Point Metric 24 mm Crankshaft Bolt Impact Socket

- Used for removing and installing crankshaft bolts on Audi® A4®, A6® and A8® vehicles
- Socket is 1/2" drive 24 mm and overall length is 2" which is critical to the crankshaft bolt application
- Flank Drive® wrenching system grips fastener on the flanks/flats, increasing torque by 15–20% while preventing the fastener from rounding, and increasing the life of the socket



DPSM16



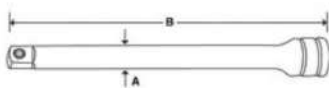
## Shallow/10-Point, mm

mm	10				
16	DPSM16	24.6	24.6	38.1	11.9

### DPSM16 1/2" Drive 10-Point Metric 16 mm Shallow Impact Socket

- Used for removing the rear lower control arm bolts on 2001 and newer Honda® Civic® and Acura® RSX® vehicles
- Forged from tough alloy steel
- Heat-treated to a lower hardness to add impact resistance and ductility

## POWER ACCESSORIES



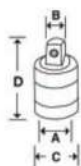
PS10

## Extensions/Lock Button, Industrial

Stock No.		
PS2	5/8	2
PS3	5/8	3-1/2
PS5	5/8	5
PS10	5/8	10

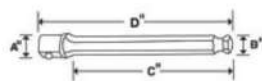


PA2A



## Adaptors (Power)

Stock No.	Socket Attachment				
PA4F	Pin Type	1/2	3/8	15/16	1-13/16
PA2A	Pin Type	3/8	1/2	3/4	1-5/16



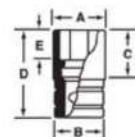
A3011A

## Hex Shanks (Power)

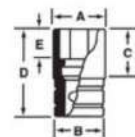
Stock No.	Socket Attachment				
A3011A	Pin Type	1/2	7/16	1-1/4	2-3/4

**Deep, mm, Industrial**

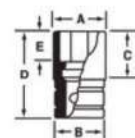
mm	6					
17	SPM17	24.6	24.6	66.6	82.6	12.7
19	SPM19	26.4	26.4	64.8	82.6	11.9
21	SPM21	28.3	28.3	64.8	82.6	12.3


**SPM19**

**Double Square/Shallow, inches, Industrial**

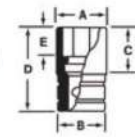
	8					
3/8	P412	13/32	7/8	7/8	1-1/2	5/16
7/16	P414	13/16	15/16	7/8	1-1/2	3/8
1/2	P416	29/32	1	7/8	1-1/2	5/16
9/16	P418	1	1-1/8	7/8	1-1/2	1/2
5/8	P420	1-3/32	1-3/16	7/8	1-1/2	1/2
11/16	P422	1-7/32	1-1/4	7/8	1-1/2	13/32
3/4	P424	1-5/16	1-3/8	7/8	1-1/2	9/16
13/16	P426	1-7/16	1-7/16	7/8	1-1/2	5/8
7/8	P428	1-1/2	1-1/2	1-1/32	1-3/4	5/8
1	P432	1-23/32	1-3/4	1-1/8	1-3/4	3/4


**P412**

**Double Square/Deep, inches, Industrial**

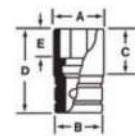
	8					
13/16	SIPR426	1-7/16	1-3/8	2-9/16	3-1/4	5/8
1	SIPR432	1-3/4	1-1/2	2-11/16	3-1/2	3/4
1-1/8	SIPR436	1-15/16	1-51/64	2-23/32	3-1/2	27/32


**SIPR426**

**Double Square/Extra-Deep, inches, Industrial**

	8					
1-1/8	SIPRL436	1-15/16	1-1/2	4-13/32	5	27/32


**SIPRL436**

**Shallow Magnetic, inches, Industrial**

	6				
3/8	MPK121A	19/32	7/8	1-1/2	1/8
7/16	MPK141A	11/16	7/8	1-1/2	5/32
1/2	MPK161A	25/32	15/16	1-1/2	5/32
9/16	MPK181A	7/8	15/16	1-1/2	5/32


**MPK121A**


- Do not use adaptors with impact drivers.
- Do not exceed torque stamped on adaptor.
- Do not use chrome or industrial finish hand tools with impact drivers.
- Do not use power sockets or accessories with impact drivers.
- Do not use power tools or accessories with impact drivers.
- Read Safety Precautions on pages W1-W4

**WARNING**


# POWER BIT SOCKETS

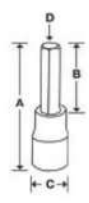
1/2" DRIVE TOOLS



## ★ TORX®/Standard (Power), Industrial (1/2")

#	Stock No.				
T45	PSTX45E	2-29/64	61/64	29/32	FTX45E2
T50	PSTX50E	2-29/64	61/64	29/32	FTX50E2
T55	PSTX55E	2-29/64	61/64	1-1/4	FTX55E2
T50	PSTX500E*	2-29/64	61/64	29/32	FTX500E2

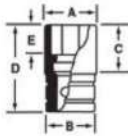
\*GM® Style TORX®



## Hex/Standard (Power), inches, Industrial (1/2")

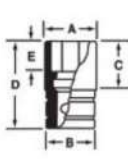
5/16	PSA10E	2-29/64	61/64	29/32	FA10E2
3/8	PSA12E	2-41/64	1-9/64	29/32	SA12E2
7/16	PSA14E	2-57/64	1-25/64	29/32	SA14E2
1/2	PSA16E	3-1/8	1-5/8	29/32	SA16E2
9/16	PSA18E	3-13/64	1-21/32	1-1/32	SA18E2
5/8	PSA20E	3-13/32	1-41/64	1-11/64	LAW120E2
3/4	PSA24E	4-3/64	2-15/64	1-3/8	LAW124E2

# SURFACE DRIVE SOCKETS



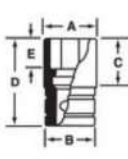
## Shallow, mm, Natural

mm					
15	DTM15A	22.3	22.9	21.3	38.1



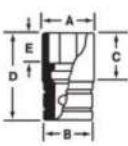
## Deep, mm, Natural

mm					
13	DTSM13A	19.3	21.8	65.8	82.6
15	DTSM15A	22.3	21.8	65.8	82.6



## Deep, inches, Natural

1/2	DTS16A	3/4	29/32	2-19/32	3-1/4
9/16	DTS18A	13/16	29/32	2-19/32	3-1/4



## Surface Drive (M-Series)

- Snap-on® M-Series sockets offer a precise fit, optimum hardness, durability, ring-groove and pin hole for use on a variety of industrial fastening applications
- M-Series sockets feature surface drive technology to ensure a long service life
- Used in the industrial market for assembly line work
- The lead-in chamfer and special design of these sockets will engage with a fastener while rotating on a power nut runner

mm					
11	M3111	16.6	23.6	19.1	38.1
13	M3113	22.0	23.6	19.1	38.1
15	M3115	23.6	23.6	21.3	38.1
18	M3118	28.4	28.4	21.3	38.1
15	M3215	23.6	23.6	40.4	57.2



360MB

## 6/12-Point, Inches, Chrome

### 59 pc 1/2" Drive 6-/12-Point SAE Shallow/Deep/Universal General Service Socket Set

- Includes (16) 12-point Shallow Sockets (3/8–1-5/16")
- Includes (11) 6-point Deep Sockets (1/2–1-1/8")
- Includes (10) 12-point deep sockets (1/2–1-1/16")
- Includes (7) 6-point Universal Sockets (9/16–15/16")
- Includes Ratchet Spinner, Speeder, Universal Joint, Sliding T-Handle, Ratcheting Adaptor, Dual 80° Technology Standard Handle Ratchet, 18" Breaker Bar, 2" Extension, 5" Knurled Extension, 11" Knurled Extension, 3-1/2" Extension and 1/4–1/2" capacity Stud Remover
- Includes metal box

12-Point Shallow Sockets	6-Point Deep Sockets	12-Point Deep Sockets
3/8 SW121A	1/2 TS161A	1/2 S161A
7/16 SW141A	9/16 TS181A	9/16 S181A
1/2 SW161A	5/8 TS201	5/8 S201
9/16 SW181A	11/16 TS221	11/16 S221
5/8 SW201	3/4 TS241	3/4 S241
11/16 SW221	13/16 TS261	13/16 S261
3/4 SW241	7/8 TS281	7/8 S281
13/16 SW261	15/16 TS301	15/16 S301
7/8 SW281	1 TS321	1 S321
15/16 SW301	1-1/16 TS341	1-1/16 S341
1 SW321	1-1/8 TS361	
1-1/16 SW341		
1-1/8 SW361		
1-3/16 SW381		
1-1/4 SW401		
1-5/16 SW421		

ASME®/ANSI® B107.1

6-Point Universal Socket Set	307SUY**	9/16–15/16" (7 pc)
Also Includes	A17A	1/2" Drive 15/16" Blade Width Drag Link Socket
	A80A	Stud Remover
	KRA21G	Metal Box
	LRS70A†	1-19/32" Ratchet Spinner
	S12L†	12" Sliding T-Handle
	S4†	18-7/8" Speeder
	S8	2-11/16" Universal Joint
	S77A†	Ratchet Adaptor
	S80A†	Standard Handle Ratchet
	SL80A†	Long Handle
	SN18B†	18" Breaker Bar
	SX2*	2" Extension
	SXK3**	3-1/2" Extension
	SXK5**	5" Knurled Extension
	SXK11**	11" Knurled Extension

Set includes storage tray  
\*\*ASME®/ANSI® B107.10M

\*Not knurled  
†ASME®/ANSI® B107.10



345MMB

## 12-Point, mm, Chrome

### 45 pc 1/2" Drive 12-Point Metric Shallow/Deep General Service Socket Set

- Includes (45) metric 12-point Flank Drive® shallow socket set (10–32 mm), metric 12-point Flank Drive® deep socket set (12–24 mm), speeder, universal joint, sliding t-handle, ratchet adaptor, Dual 80° Technology standard handle ratchet, 18" breaker bar, 3-1/2" extension, 5" knurled extension and 11" knurled extension

mm	Stock No.
10	SWM101A
11	SWM111A
12	SWM121A
13	SWM131A
14	SWM141A
15	SWM151A
16	SWM161
17	SWM171
18	SWM181
19	SWM191
20	SWM201
21	SWM211
22	SWM221
23	SWM231
24	SWM241
25	SWM251
26	SWM261
27	SWM271
28	SWM281
29	SWM291
30	SWM301
31	SWM311
32	SWM321

12-Point Universal Socket Set	313SMYA	13 pc 1/2" Drive 12-Point Metric Flank Drive® Deep Socket Set
Also Includes	S12L	1/2" Drive 12" Sliding T-Handle
	S4	18-7/8" Speeder
	S8	2-11/16" Universal Joint
	S77A	Ratchet Adaptor
	S80A	Standard Handle Ratchet
	SN18B	18" Breaker Bar
	SXK3	3-1/2" Extension
	SXK5	5" Knurled Extension
	SXK11	11" Knurled Extension

Sets include storage tray

ASME®/ANSI® B107.1



- Do not use chrome or industrial finish hand tools with power drivers or impact drivers.
- Wear safety goggles (user and bystanders).
- Hand use only.
- Read Safety Precautions on pages W1–W4

# GENERAL SERVICE SETS

1/2" DRIVE TOOLS



**317MSPC**

## 6-Point, Inches, Chrome

$\updownarrow$	6-Point Shallow Sockets
3/8	TW121A
7/16	TW141A
1/2	TW161A
9/16	TW181A
5/8	TW201
11/16	TW221
3/4	TW241
13/16	TW261
7/8	TW281
15/16	TW301
1	TW321
1-1/16	TW341
1-1/8	TW361

<b>Also Includes</b>	<b>S80A</b>	Standard Handle Ratchet
	<b>SN18B</b>	18" Breaker Bar
	<b>SXK5</b>	5" Knurled Extension
	<b>SXK11</b>	11" Knurled Extension

ASME®/ANSI® B107.10



**317MPC**

## 12-Point, Inches, Chrome

$\updownarrow$	Stock No.
3/8	SW121A
7/16	SW141A
1/2	SW161A
9/16	SW181A
5/8	SW201
11/16	SW221
3/4	SW241
13/16	SW261
7/8	SW281
15/16	SW301
1	SW321
1-1/16	SW341
1-1/8	SW361

<b>Also Includes</b>	<b>S80A</b>	Standard Handle Ratchet
	<b>SN18B</b>	18" Breaker Bar
	<b>SXK5</b>	5" Knurled Extension
	<b>SXK11</b>	11" Knurled Extension

ASME®/ANSI® B107.10



**317AMMPC**

## 6-Point, mm Chrome

$\updownarrow$ mm	6-Point Shallow Sockets
12	TWM12A
13	TWM13A
14	TWM14A
15	TWM15A
16	TWM16
17	TWM17
18	TWM18
19	TWM19
20	TWM20
21	TWM21
22	TWM22
23	TWM23
24	TWM24

<b>Also Includes</b>	<b>S80A</b>	Standard Handle Ratchet
	<b>SN18B</b>	18" Breaker Bar
	<b>SXK5</b>	5" Knurled Extension
	<b>SXK11</b>	11" Knurled Extension

ASME®/ANSI® B107.10



**344AMB**

## 6/12-Point, Inches, Chrome

$\updownarrow$	12-Point Shallow Sockets	Size, Inches	12-Point Deep Sockets
3/8	SW121A	1/2	S161A
7/16	SW141A	9/16	S181A
1/2	SW161A	5/8	S201
9/16	SW181A	11/16	S221
5/8	SW201	3/4	S241
11/16	SW221	13/16	S261
3/4	SW241	7/8	S281
13/16	SW261	15/16	S301
7/8	SW281	1	S321
15/16	SW301	1-1/16	S341
1	SW321	1-1/8	S361
1-1/16	SW341		
1-1/8	SW361		
1-3/16	SW381		
1-1/4	SW401		
1-5/16	SW421		

<b>6-Point Universal Socket Set</b>	<b>307SUY</b>	9/16–15/16" (7 pc)
<b>Also Includes</b>	<b>LRS70A</b>	1-19/32" Ratchet Spinner
	<b>S4</b>	18-7/8" Speeder
	<b>S8</b>	2-11/16" Universal Joint
	<b>S12L</b>	12" Sliding T-Handle
	<b>S77A</b>	Ratchet Adaptor
	<b>S80A</b>	Standard Handle Ratchet
	<b>SN18B</b>	18" Breaker Bar
	<b>SX2</b>	2" Extension
	<b>SXK5</b>	5" Knurled Extension
	<b>SXK11</b>	11" Knurled Extension

ASME®/ANSI® B107.10



# RATCHETS, HANDLES AND ACCESSORIES (Blue Point®)

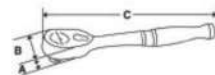
1/2" DRIVE TOOLS



BPRSR940



BPRSR940SG



## Quick-Release Ratchets (Blue-Point®) (1/2")

Stock No.	Description	Gear Teeth	Gear Action	EPH	EPH	EPH
BPRSR940	1/2" Drive Standard Handle Quick-Release Ratchet (Blue-Point®)	40	9°	23/32	1-23/32	9-7/8
BPRSR940SG	1/2" Drive Soft Grip Standard Handle Quick-Release Ratchet (Blue-Point®)	40	9°	23/32	1-23/32	9-7/8

ASME®/ANSI® B107.10

### BPR703 3 pc Standard Handle Quick-Release Ratchet Set (Blue-Point®)

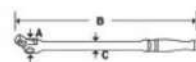
- Includes 1/4" Drive BPRTR936, 3/8" Drive BPRFR938 and 1/2" Drive BPRSR940 Ratchets (3 pc) in a storage tray
- Features quick-release button for rapid socket/ accessory changes, even with greasy or oily hands
- Contoured handle for comfort and control
- Chrome finish for easy cleanup
- All ratchets in series meet or exceed ANSI® B107-10M-1996 specifications



BLPBB1215



BLPBB1224



## Breaker Bars (Blue-Point®) (1/2")

Stock No.	Description	EPH	EPH	EPH
BLPBB1215	1/2" Drive 15" Breaker Bar	1-1/8	15	3/4
BLPBB1224†	1/2" Drive 12-24" Adjustable Breaker Bar	1-1/16	12-24	5/8-7/8



S13TURBO



SXLBP3



SXLBP10

## Turbo T-Handle (Blue-Point®)

Stock No.	Description	Handle Type
S13TURBO	1/2" Square Drive Turbo Speed T-Handle (Blue-Point®)	Turbo T-Handle

## Locking Extensions, Chrome (Blue-Point®)

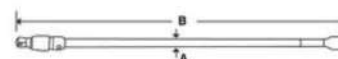
Stock No.	EPH
SXLBP3	3
SXLBP6	6
SXLBP10	10



BLPEXTK123



BLPEXTL1212



## Knurled Extensions, Chrome (Blue-Point®)

Stock No.	EPH
BLPEXTK123	3
BLPEXTK126	6
BLPEXTK1210	10

## Extra-Long Locking Extensions (Blue-Point®)

- Smooth, durable chrome finish
- Made from tough 6130 steel
- Secure socket retention
- Do not use with power or impact tools

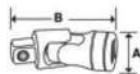
Stock No.	Description	EPH	
BLPEXTL1212	1/2" Drive 12" Extra-Long Locking Extension (Blue-Point®)	12-1/8	•
BLPEXTL1218	1/2" Drive 18" Extra-Long Locking Extension (Blue-Point®)	18	•
BLPEXTL1224	1/2" Drive 24" Extra-Long Locking Extension (Blue-Point®)	24	•

Set includes storage tray

BLPLEXT303  
Set Contains:



BLPUJ12

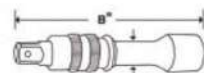


## Universal Joints, Chrome (Blue-Point®)

Stock No.	EPH
BLPUJ12	2-3/4



303AIMXL



## Extra-Long Locking Impact Extensions (Blue-Point®)

Stock No.	Description	EPH	EPH	
IMXL182	1/2" Drive 18" Locking Impact Extension (Blue-Point®)	5/8	18	•
IMXL242	1/2" Drive 24" Locking Impact Extension (Blue-Point®)	5/8	24	•
IMXL312	1/2" Drive 31" Locking Impact Extension (Blue-Point®)	5/8	31	•

Set includes storage tray

303AIMXL  
Set Contains:



- Do not use "cheater bars" on handles.
- Do not push on handle.
- Do not use chrome or industrial finish hand tools with power drivers or impact drivers.
- These products can expose you to chemicals which are known to the state of California to cause cancer and reproductive harm. See pages P1-P2 for details.
- Read Safety Precautions on pages W1-W4



## SOCKETS (Blue Point®)



BLPSM1216



Shallow, mm, Chrome (Blue-Point®)

mm	6			
12	BLPSM1212	38	21.9	17.9
13	BLPSM1213	38	21.9	19.1
14	BLPSM1214	38	21.9	20.4
15	BLPSM1215	38	21.6	21.6
16	BLPSM1216	38	22.9	22.9
17	BLPSM1217	38	24.1	24.1
18	BLPSM1218	38	25.4	25.4
19	BLPSM1219	38	26.5	26.5
20	BLPSM1220	38	27.8	27.8
21	BLPSM1221	38	28.5	28.5
22	BLPSM1222	41	29.9	29.9
23	BLPSM1223	41	31.1	31.1
24	BLPSM1224	41	32	32
27	BLPSM1227	44	36	36
30	BLPSM1230	44	39.8	39.8
32	BLPSM1232	44	42	42



BLPS1234

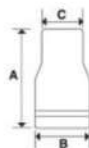


Shallow, Inches, Chrome (Blue-Point®)

II	6			
3/8	BLPS1238	1-1/2	55/64	39/64
7/16	BLPS12716	1-1/2	55/64	5/8
1/2	BLPS1212	1-1/2	55/64	3/4
9/16	BLPS12916	1-1/2	55/64	13/16
5/8	BLPS1258	1-1/2	29/32	29/32
11/16	BLPS121116	1-1/2	31/32	31/32
3/4	BLPS1234	1-1/2	1-1/16	1-1/16
13/16	BLPS121316	1-1/2	1-1/8	1-1/8
7/8	BLPS1278	1-5/8	1-11/64	1-11/64
15/16	BLPS121516	1-5/8	1-1/4	1-1/4
1	BLPS121	1-5/8	1-21/64	1-21/64
1-1/16	BLPSB121116	1-3/4	1-13/32	1-13/32
1-1/8	BLPSB12118	1-3/4	1-1/2	1-1/2
1-3/16	BLPSB121316	1-3/4	1-9/16	1-9/16
1-1/4	BLPSB12114	1-3/4	1-21/32	1-21/32



BLPTE1220



★ TORX®/External, Chrome (Blue-Point®)

#	Stock No.			
E18	BLPTE1218	1-9/16	7/8	7/8
E20	BLPTE1220	1-9/16	29/32	29/32
E22	BLPTE1222	1-9/16	1	1
E24	BLPTE1224	1-9/16	1-1/8	1-1/8

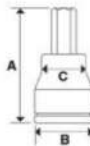
## TORX® BIT SOCKETS (Blue Point®)



BLPTL1255



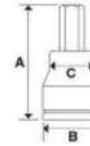
BLPT1255



BLPT1255TP



BLPTL1255TP



TORX®/Standard (Blue-Point®)

	#	Stock No.	A	B	C
Standard	T55	BLPT1255	2-23/64	7/8	23/32
	T60	BLPT1260	2-23/64	7/8	25/32
Long	T55	BLPTL1255	4-15/64	7/8	23/32
	T60	BLPTL1260	4-15/64	7/8	25/32

★ TORX®/Tamper-Resistant, Chrome (Blue-Point®) (1/2")

	#	Stock No.	A	B	C
Standard	T55	BLPT1255TP	2-23/64	7/8	23/32
	T60	BLPT1260TP	2-23/64	7/8	25/32
Long	T55	BLPTL1255TP	4-15/64	7/8	23/32
	T60	BLPTL1260TP	4-15/64	7/8	25/32

## Hex/Standard, mm, Chrome (Blue-Point®) (1/2")



BLPH1214

mm		A	B	C
10	BLPH1210	60	22.5	18
14	BLPH1214	61	25	25
17	BLPH1217	61	28	28
19	BLPH1219	61	30	30
12	BLPHM1212	60	22.5	20

## Hex/Standard, Inches, Chrome (Blue-Point®) (1/2")



BLPH12916

		A	B	C
1/2	BLPH1212	2-13/32	7/8	25/32
3/4	BLPH1234	2-13/32	1-3/16	1-3/16
5/8	BLPH1258	2-13/32	1-1/16	1-1/16
7/16	BLPH12716	2-13/32	7/8	25/32
9/16	BLPH12916	2-13/32	1	1

## COMBINATION BIT SOCKET SETS (Blue Point®)

### Combination Bit Socket Sets (Blue-Point®)

#### BLPTSSC43 43 pc Combination Drive TORX® Socket and TORX® Bit Socket Set (Blue-Point®)

- 1/4" drive components include (5) External Sockets (E4–E8), (10) Tamper-Resistant TORX® Bit Sockets (T6–T30) and (10) Tamper-Resistant TORX® Long Bit Sockets (T6–T30)
- 3/8" drive components include: (4) External TORX® Sockets (E10–E16), (3) Tamper-Resistant TORX® Bit Sockets (T40, T45 and T50) and (3) Tamper-Resistant TORX® Long Bit Sockets (T40, T45 and T50)
- 1/2" drive components include: (4) External TORX® Sockets (E18–E24), (2) Tamper-Resistant TORX® Bit Sockets (T55 and T60) and (2) Tamper-Resistant TORX® Long Bit Sockets (T55 and T60)
- Includes storage case



BLPTSSC43

#### BLPHSSC30 30 pc Combination Drive Hex Bit Socket Set (Blue-Point®)

- 1/4" drive components include (6) SAE Hex Bit Sockets (1/8–1/4") and (5) Metric Hex Bit Sockets (2.5–6 mm)
- 3/8" drive components include (5) SAE Hex Bit Sockets (7/32–7/16") and (5) Metric Hex Bit Sockets (6–10 mm)
- 1/2" drive components include (4) SAE Hex Bit Sockets (1/2–3/4") and (5) Metric Hex Bit Sockets (10–19 mm)
- Includes storage case



BLPHSSC30

#### BLPHSSC30PB Case for BLPHSSC30 (Blue-Point®)

- Case only

#### BLPTH87 87 pc TORX® and Hex Bit Socket Set (Blue-Point®)

- 1/4" drive components include (5) External TORX® Sockets (E4–E8), (10) TORX® Bit Sockets (T6–T30), (10) Long TORX® Bit Sockets (T6–T30), (5) Metric Hex Bit Sockets (2.5–6 mm), (3) Long Metric Hex Bit Sockets (4–6 mm), (6) Hex Bit Sockets (1/8–1/4") and (3) Long Hex Bit Sockets (1/8–3/16")
- 3/8" drive components include (4) External TORX® Sockets (E10–E16), (3) TORX® Bit Sockets (T40–T50), (3) Long TORX® Bit Sockets (T40–T50), (5) Metric Hex Bit Sockets (6–10 mm), (4) Long Metric Hex Bit Sockets (7–10 mm), (4) Hex Bit Sockets (7/32–3/8") and (4) Long Hex Bit Sockets (7/32–3/8")
- 1/2" drive components include (4) External TORX® Sockets (E18–E24), (2) TORX® Bit Sockets (T55, T60), (2) Long TORX® Bit Sockets (T55, T60), (5) Metric Hex Bit Sockets (10–19 mm) and (5) Hex Bit Sockets (7/16–3/4")
- Includes storage case



BLPTH87

## GENERAL SERVICE SETS

### General Service Set (Blue-Point®) (1/2")

- Great for use at home or on the road
- Set offers full range of deep and shallow sockets for the most common fastener applications
- Smallest and most compact general service set offered yet
- Compact case fits in a shallow Snap-on® tool box drawer

#### BLPGSS1233 33 pc 1/2" Drive SAE/Metric General Service Socket Set (Blue-Point®)

- Includes (15) SAE (3/8–1-1/4") (12) Metric (12–24 mm) Standard Sockets, Breaker Bar, Universal Joint, Quick-Release Ratchet and (3) Extensions (3, 6 and 10")
- Includes storage case



BLPGSS1233



- Do not use chrome or industrial finish hand tools with power drivers or impact drivers.
- Read Safety Precautions on pages W1–W4