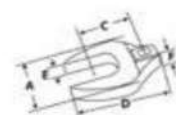


Open End, mm, Chrome

mm	Stock No.	A	C	D	E	F	Maximum Recommended Working Torque, in-lb	Set Contains:	
								216FCOM	210FCOMA
9	FCOM9A	22.4	18.8	33.3	5.3	13.2	85	•	
10	FCOM10A	22.4	17.6	33.0	5.3	13.2	110	•	•
11	FCOM11A	22.4	16.6	32.3	5.3	13.2	125	•	•
12	FCOM12A	26.2	21.0	37.3	5.3	13.2	140	•	•
13	FCOM13A	26.2	19.8	36.8	5.3	13.2	170	•	•
14	FCOM14A	26.2	18.6	36.1	5.3	13.2	210	•	•
15	FCOM15A	31.8	22.7	40.9	5.3	13.2	230	•	•
16	FCOM16A	31.8	21.7	40.4	5.3	13.2	255	•	•
17	FCOM17A	31.8	20.5	39.9	5.3	13.2	275	•	•
18	FCOM18A	38.4	27.2	48.5	6.4	13.2	290	•	•
19	FCOM19A	38.4	26.2	48.0	6.4	13.2	315	•	•
20	FCOM20A	38.4	25.0	48.0	6.4	13.2	340	•	•
21	FCOM21A	43.7	27.4	48.8	7.1	15.0	375	•	•
22	FCOM22A	43.7	26.4	50.0	7.1	15.0	400	•	•
23	FCOM23A	50.5	30.1	54.4	8.9	16.8	425	•	•
24	FCOM24A	50.5	28.8	53.8	8.9	16.8	460	•	•

Set includes storage tray

ASME® B107.21



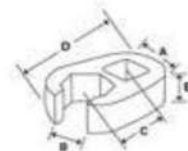
210FCOMA

Flank Drive® Flare Nut, 6-Point, mm

mm	6	A	B	C	D	E	Maximum Recommended Working Torque, in-lb	Set Contains:	
								210FRHMA	6
9	FRHM9	22.4	6.7	14.2	33.3	9.7	170		
10	FRHM10	22.9	7.4	14.2	35.3	9.7	212	•	
11	FRHM11	22.9	8.3	14.2	35.3	9.7	245	•	
12	FRHM12	25.4	9.0	14.2	36.6	9.7	280	•	
13	FRHM13	25.4	9.4	14.2	36.6	9.7	315	•	
14	FRHM14	28.4	10.5	18.8	40.9	11.2	385	•	
15	FRHM15	28.4	11.2	18.8	40.9	11.2	460	•	
16	FRHM16	28.4	11.7	18.8	40.9	11.2	530	•	
17	FRHM17	33.3	12.6	20.6	44.7	12.7	600	•	
18	FRHM18	33.3	13.6	20.6	44.7	12.7	670	•	
19	FRHM19	33.3	14.7	20.6	44.7	12.7	740	•	
20	FRHM20	41.1	15.2	22.1	50.3	14.2	850	•	
21	FRHM21	41.1	16.3	22.1	50.3	14.2	920	•	
22	FRHM22	41.1	17.0	22.1	50.3	14.2	1,025	•	

Set includes storage tray

ASME® B107.21



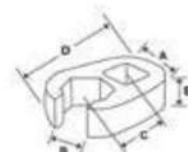
210FRHMA

Flank Drive® Flare Nut, 6-Point, inches

II	6	A	B	C	D	E	Maximum Recommended Working Torque, in-lb	Set Contains:	
								207SFRH	6
3/8	FRH120S	13/32	1/4	9/16	1-11/32	3/8	190		
7/16	FRH140S	29/32	5/16	9/16	1-13/32	3/8	255	•	
1/2	FRH160S	1	11/32	9/16	1-7/16	3/8	320	•	
9/16	FRH180S	1-1/8	3/8	3/4	1-5/8	7/16	405	•	
5/8	FRH200S	1-1/8	7/16	3/4	1-5/8	7/16	500	•	
11/16	FRH220S	1-5/16	1/2	13/16	1-25/32	1/2	600	•	
3/4	FRH240S	1-5/16	9/16	13/16	1-25/32	1/2	700	•	
13/16	FRH260S	1-5/8	5/8	7/8	1-31/32	9/16	820	•	
7/8	FRH280S	1-5/8	23/32	7/8	1-31/32	9/16	940	•	
15/16	FRH300S	1-7/8	11/16	15/16	2-3/16	5/8	1,020	•	
1	FRH320S	1-7/8	3/4	15/16	2-3/16	5/8	1,180	•	

Set includes storage tray

ASME® B107.21



207SFRH



- Use only moderate force on Flare Nut wrenches.
- Use only moderate force on Crowfoot wrenches.
- Screen the puller application.
- Read Safety Precautions on pages W1-W4

3/8" DRIVE CROWFOOT WRENCHES



208AN

Flank Drive® Flare Nut, Deep, 12-Point, inches

Set Contains: 208AN

		A	B	C	E	Maximum Recommended Working Torque, in-lb	
5/8	AN850810B	15/16	1/2	23/32	23/32	200	•
11/16	AN850811B	1-1/32	17/32	25/32	23/32	245	•
3/4	AN850812B	1-1/8	9/16	13/16	3/4	360	•
13/16	AN850813B	1-7/32	5/8	7/8	3/4	360	•
7/8	AN850814B	1-5/16	25/32	15/16	25/32	500	•
15/16	AN850815B	1-3/8	3/4	31/32	25/32	500	•
1	AN850816B	1-7/16	3/4	1	13/16	500	•
1-1/16	AN850817B	1-17/32	25/32	1-1/32	13/16	500	•

Set includes storage tray

ASME®/ANSI® B107.21

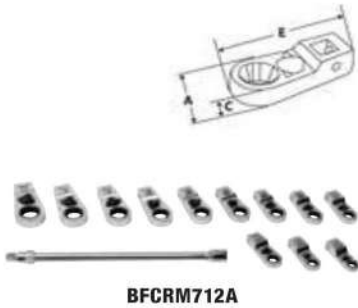


A277

Crowfoot Wrench Holder

A277 3/8" Drive 8-3/4" Crowfoot Wrench Holder

- Organizes and stores crowfoot wrenches
- 2-piece design snaps apart for access to desired size
- 8-3/4" long



BFCRM712A

Ratcheting, mm (Blue-Point®)

Set Contains: BFCRM712A

8	BFCRM8A	17.8	6.5	49.3	•
9	BFCRM9A	19.5	7.4	50.8	•
10	BFCRM10A	21.5	8.0	53.8	•
11	BFCRM11A	22.0	8.5	53.8	•
12	BFCRM12A	23.5	9.0	57.2	•
13	BFCRM13A	25.0	10.0	57.2	•
14	BFCRM14A	27.0	10.0	60.3	•
15	BFCRM15A	28.5	11.0	63.5	•
16	BFCRM16A	30.5	11.0	66.7	•
17	BFCRM17A	34.5	12.0	68.3	•
18	BFCRM18A	36.5	12.0	71.4	•
19	BFCRM19A	36.5	12.9	73.0	•

Set includes FXLBP10: 10" locking extension

Set shown includes storage tray



BFCR708A

Ratcheting, inches (Blue-Point®)

Set Contains: BFCR708A

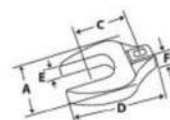
5/16	BFCR10A	11/16	1/4	2	•
3/8	BFCR12A	27/32	5/16	2-1/8	•
7/16	BFCR14A	7/8	11/32	2-1/8	•
1/2	BFCR16A	31/32	13/32	2-1/4	•
9/16	BFCR18A	1-1/16	13/32	2-3/8	•
5/8	BFCR20A	1-3/16	7/16	2-5/8	•
11/16	BFCR22A	1-1/4	15/32	2-5/8	•
3/4	BFCR24A	1-7/16	1/2	2-7/8	•

Set includes FXLBP10: 10" locking extension

Set shown includes storage tray

Open End, mm

mm		A	C	E	F	Maximum Recommended Working Torque, in-lb
20	SCOM20	40.4	42.9	7.8	15.9	1,400
21	SCOM21	40.4	42.9	7.8	15.9	1,500
22	SCOM22	44.7	44.5	8.2	15.9	1,500
23	SCOM23	48.0	44.5	8.9	15.9	1,600
24	SCOM24	46.7	44.5	8.5	15.9	1,800
25	SCOM25	51.1	45.2	8.9	15.9	1,800
26	SCOM26	53.1	45.2	9.2	15.9	1,800
27	SCOM27	53.1	44.5	9.2	15.9	2,000
28	SCOM28	53.1	43.6	9.2	15.9	2,100
30	SCOM30	59.7	44.5	9.9	15.9	2,200
32	SCOM32	62.7	50.0	10.3	15.9	2,300
34	SCOM34	62.7	51.6	10.3	15.9	2,400
35	SCOM35	69.1	50.8	11.0	15.9	2,500
36	SCOM36	69.1	50.0	11.0	15.9	2,600
38	SCOM38	75.4	50.8	11.8	15.9	2,900
40	SCOM40	75.4	51.6	11.8	15.9	3,000
41	SCOM41	81.8	50.8	12.5	15.9	3,400
42	SCOM42	81.8	50.0	12.5	15.9	3,400
46	SCOM46	91.2	51.2	13.5	15.9	4,100
50	SCOM50A	100.8	53.8	14.6	16.1	—



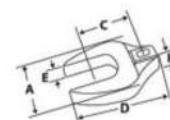
SCOM32

Open End, inches

		A	C	E	F	Maximum Recommended Working Torque, in-lb	
15/16	SC030	1-27/32	1-15/32	11/32	5/8	1,800	
1	SC032	1-31/32	1-11/16	23/64	5/8	1,900	
1-1/16	SC034	2-3/32	1-3/4	3/8	5/8	2,000	•
1-1/8	SC036	2-7/32	1-3/4	3/8	5/8	2,100	•
1-3/16	SC038	2-11/32	1-3/4	13/32	5/8	2,200	•
1-1/4	SC040	2-15/32	2	13/32	5/8	2,300	•
1-5/16	SC042	2-19/32	2	7/16	5/8	2,400	•
1-3/8	SC044	2-23/32	2	7/16	5/8	2,500	•
1-7/16	SC046	2-27/32	2	7/16	5/8	2,600	•
1-1/2	SC048	2-31/32	2	15/32	5/8	2,900	•
1-9/16	SC050	2-31/32	1-31/32	15/32	5/8	3,000	
1-5/8	SC052	3-7/32	1-31/32	1/2	5/8	3,400	•
1-11/16	SC054	3-11/32	2-3/16	1/2	5/8	3,700	•
1-3/4	SC056	3-15/32	2-3/16	17/32	5/8	3,900	•
1-13/16	SC058	3-19/32	2-3/16	17/32	5/8	4,100	•
1-7/8	SC060	3-23/32	2-3/16	9/16	5/8	4,300	•
2	SC064	3-31/32	2-7/32	9/16	5/8	5,000	•
2-1/8	SC068	3-31/32	2-7/32	37/64	5/8	5,000	
2-1/4	SC072	3-31/32	2-13/32	37/64	5/8	5,000	
2-3/8	SC076	4-3/8	2-31/64	19/32	5/8	5,000	
2-7/16	SC078	4-3/8	2-7/16	19/32	5/8	5,000	
2-1/2	SC080	4-3/8	2-13/32	19/32	5/8	5,000	

Set Contains:

314SC0A



314SC0A

• includes storage tray

ASME® B107.21

Adjustable, inches/mm

ADCF8 3/8" Drive Metric 0-29 mm Adjustable Crowfoot Wrench

- Metric and SAE scales
- Opening range from 0-1.14" (0-29 mm)
- Lateral side nut is designed to work on difficult-to-access fasteners and minimizes dirt accumulation



ADCF8

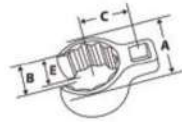
WARNING



- Always pull wrench in direction of fixed jaw.
- Use only moderate force on crowfoot and flare nut wrenches.
- Read Safety Precautions on pages W1-W4

1/2" DRIVE CROWFOOT WRENCHES

WRENCHES



315AN

Flank Drive® Flare Nut/Deep, 12-Point, inches

Set Contains: 315AN

	12	A	B	C	E	Maximum Recommended Working Torque, in-lb	12
1-1/8	AN850818B	1-5/8	27/32	1-5/32	7/8	825	•
1-3/16	AN850819B	1-11/16	29/32	1-3/16	7/8	825	•
1-1/4	AN850820B	1-25/32	15/16	1-7/32	7/8	825	•
1-5/16	AN850821B	1-27/32	31/32	1-1/4	7/8	900	•
1-3/8	AN850822B	1-15/16	1-1/16	1-5/16	15/16	900	•
1-7/16	AN850823B	2	1-1/16	1-11/32	15/16	900	•
1-1/2	AN850824B	2-3/32	1-1/8	1-3/8	15/16	900	•
1-9/16	AN850825B	2-5/32	1-5/32	1-13/32	15/16	900	•
1-5/8	AN850826B	2-7/32	1-7/32	1-7/16	15/16	1,100	•
1-11/16	AN850827B	2-5/16	1-5/16	1-1/2	1-1/32	1,100	•
1-3/4	AN850828B	2-3/8	1-5/16	1-9/16	1-1/32	1,150	•
1-13/16	AN850829B	2-15/32	1-11/32	1-19/32	1-1/32	1,200	•
1-7/8	AN850830B	2-9/16	1-3/8	1-21/32	1-1/16	1,200	•
1-15/16	AN850831B	2-5/8	1-7/16	1-11/16	1-1/16	1,200	•
2	AN850832B	2-23/32	1-9/16	1-23/32	1-1/16	1,400	•
2-1/8	AN850834B	2-7/8	1-9/16	1-13/16	1-1/8	1,450	•
2-3/16	AN850835B	2-15/16	1-21/32	1-27/32	1-1/8	1,500	•
2-1/4	AN850836B	3-1/32	1-11/16	1-7/8	1-1/8	1,500	•
2-3/8	AN850838B	3-3/16	1-13/16	1-31/32	1-3/16	1,600	•
2-7/16	AN850839B	3-1/4	1-13/16	2	1-3/16	1,650	•
2-9/16	AN850841B	3-7/16	1-29/32	2-3/32	1-9/32	1,750	•
2-5/8	AN850842B	3-1/2	2-1/16	2-1/8	1-9/32	1,800	•
2-11/16	AN850843B	3-19/32	2-1/16	2-5/32	1-9/32	1,800	•
2-3/4	AN850844B	3-21/32	2-1/16	2-7/32	1-9/32	1,850	•
3-1/8	AN850850B	4-1/8	2-5/16	2-7/16	1-5/16	2,000	•

Set includes storage tray

ASME®/ANSI® B107.21

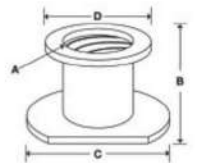
HEAVY-DUTY STRIKING WRENCHES



HTX100P



HTX52

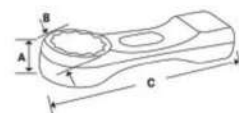


Slugging Wrench Retainers

Set Contains: HTX100P

Stock No.	Description	A	B	C	D	
HTX24	3/4" Stud Slugging Wrench Retainer	3/8	1-29/32	1-15/16	1-3/4	•
HTX28	7/8" Stud Slugging Wrench Retainer	7/8	2	2-3/16	1-29/32	•
HTX32	1" Stud Slugging Wrench Retainer	1	2-1/8	2-1/2	2-1/32	•
HTX36	1-1/8" Stud Slugging Wrench Retainer	1-1/8	2-1/4	2-1/2	2-5/32	•
HTX40	1-1/4" Stud Slugging Wrench Retainer	1-1/4	2-3/8	2-7/8	2-9/32	•
HTX44	1-3/8" Stud Slugging Wrench Retainer	1-3/8	2-15/32	3-1/8	2-3/8	•
HTX48	1-1/2" Stud Slugging Wrench Retainer	1-1/2	2-5/8	3-1/8	2-1/2	•
HTX52	1-5/8" Stud Slugging Wrench Retainer	1-5/8	2-3/4	3-5/8	2-21/32	•
HTX56	1-3/4" Stud Slugging Wrench Retainer	1-3/4	2-7/8	3-7/8	2-3/4 (70)	•
HTX60	1-7/8" Stud Slugging Wrench Retainer	1-7/8	3	4-1/2	2-7/8	•

Set includes storage case.



DX634

Flank Drive® Straight Striking, 12-Point, inches/mm

Set Contains: **DX634**

			A	B	C	
1-3/16	30	DX138A	7/8	2-3/32	7-35/64	•
1-1/4	32	DX140A	7/8	2-3/32	7-35/64	•
1-5/16	33	DX142A	7/8	2-3/32	7-35/64	•
1-3/8	35	DX144A	61/64	2-17/64	7-41/64	•
1-7/16	36	DX146A	61/64	2-17/64	7-41/64	•
1-1/2	38	DX148A	61/64	1-17/64	7-41/64	•
1-5/8	41	DX152A	1-9/64	2-5/8	7-53/64	•
1-11/16	43	DX154A	1-9/64	2-5/8	7-53/64	•
1-3/4	44	DX156A	1-7/32	2-13/16	7-29/32	•
1-13/16	46	DX158A	1-7/32	2-13/16	7-29/32	•
1-7/8	47	DX160A	1-7/32	2-13/16	7-29/32	•
—	50	DXM50	1-13/32	3-11/64	11-19/32	•
2	51	DX164A	1-13/32	3-11/64	11-19/32	•
2-1/16	52	DX166A	1-13/32	3-11/64	11-19/32	•
2-3/16	55	DX170A	1-17/32	3-29/64	11-47/64	•
2-1/4	57	DX172A	1-17/32	3-29/64	11-47/64	•
2-3/8	60	DX176A	1-21/32	3-23/32	11-55/64	•
2-7/16	62	DX178A	1-21/32	3-23/32	11-55/64	•
2-1/2	63	DX180A	1-21/32	3-23/32	11-55/64	•
2-9/16	65	DX182A	1-51/64	3-63/64	13	•
2-5/8	67	DX184A	1-51/64	3-63/64	13	•
2-3/4	70	DX188A	1-59/64	4-17/64	14-17/64	•
2-13/16	71	DX190A	1-59/64	4-17/64	14-17/64	•
2-15/16	75	DX194A	2-3/64	4-17/32	14-13/32	•
3	76	DX196A	2-3/64	4-17/32	14-13/32	•
3-1/8	79	DX1100A	2-17/64	4-29/32	17-37/64	•
3-3/8	85	DX1108A	2-17/64	4-29/32	17-37/64	•
3-1/2	89	DX1112A	2-29/64	5-19/64	17-51/64	•
3-3/4	95	DX1120A	2-21/32	5-17/32	17-51/64	•
3-7/8	98	DX1124A	2-21/32	5-17/32	17-57/64	•
4-1/8	105	DX1132A	2-59/64	6-1/32	18-9/64	•
4-1/4	108	DX1136A	2-59/64	6-1/32	18-9/64	•
4-1/2	114	DX1144A	3-5/32	6-25/32	20-1/64	•
4-5/8	117	DX1148A	3-5/32	6-25/32	20-1/64	•

ASME® B107.100



- Use only moderate force on Flarenut wrenches.
- Discontinue use of wrenches with chipped or significantly mushroomed striking pads.
- Read Safety Precautions on pages W1-W4

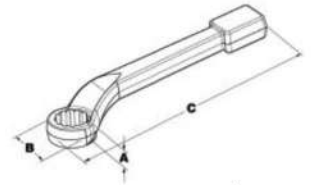
HEAVY-DUTY STRIKING WRENCHES



HX400B



HX1000A



Flank Drive® Offset Handle Sledge Hammer, 12-Point, inches/mm

Set Contains: **HX635**

Size	mm	12	A	B	C	12
1-1/16	27	HX340A	11/16	1-5/8	10	•
1-1/8	—	HX360A	3/4	1-15/16	11	•
1-3/16	30	HX380A	3/4	1-15/16	11	•
1-1/4	32	HX400B	3/4	1-15/16	11	•
1-5/16	33	HX420A	3/4	1-15/16	11	•
1-3/8	35	HX440A	7/8	2-1/8	11-1/2	•
1-7/16	36	HX460A	7/8	2-1/8	11-1/2	•
1-1/2	38	HX480A	1	2-7/16	12	•
1-5/8	41	HX520A	1	2-7/16	12	•
1-11/16	43	HX540A	1-1/8	2-5/8	12-1/2	•
1-3/4	44	HX560A	1-1/8	2-5/8	12-1/2	•
1-13/16	46	HX580A	1-1/8	2-5/8	12-1/2	•
—	50	HXM50	1-1/4	2-7/8	13	•
1-7/8	47	HX600A	1-1/4	2-7/8	13	•
1-15/16	49	HX620A	1-1/2	2-7/8	13	•
2	51	HX640A	1-1/4	2-7/8	13	•
2-1/8	—	HX680A	1-3/8	3-1/4	13-9/16	•
2-3/16	55	HX700A	1-3/8	3-1/4	13-9/16	•

Set includes storage case

Set Contains: **HX635**

Size	mm	12	A	B	C	12
2-1/4	57	HX720A	1-3/8	3-1/4	13-9/16	•
2-5/16	59	HX740A	1-3/8	3-1/4	13-9/16	•
2-3/8	60	HX760A	1-1/2	3-5/8	14-1/8	•
2-1/2	64	HX800A	1-1/2	3-5/8	14-1/8	•
2-9/16	65	HX820A	1-1/2	3-5/8	14-1/8	•
2-5/8	67	HX840A	1-5/8	3-15/16	15	•
2-3/4	70	HX880A	1-5/8	3-15/16	15	•
2-7/8	73	HX920A	1-3/4	4-7/16	16	•
2-15/16	75	HX940A	1-3/4	4-7/16	16	•
3	76	HX960A	1-3/4	4-7/16	16	•
3-1/8	80	HX1000A	1-3/4	4-7/16	16	•
3-3/8	85	HX1080A	2	6-1/4	18-1/4	•
3-1/2	89	HX1120A	2	6-1/4	18-1/4	•
3-3/4	95	HX1200A	2	6-1/4	18-1/4	•
3-7/8	98	HX1240A	2	6-1/4	18-1/4	•
4-1/8	105	HX1320A	2	6-1/4	18-1/4	•
4-1/4	108	HX1360A	2	6-1/4	18-1/4	•

Set includes storage case

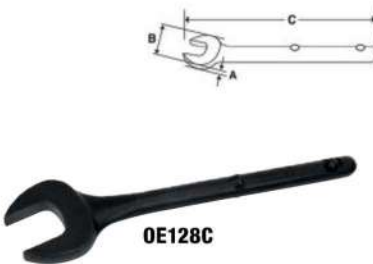
HEAVY-DUTY TUBULAR WRENCHES



13B

Tubular Handles

Size, inches	Stock No.	A	B
13	13B	13-1/2	7/8
24	24B	24	7/8
36	36B	36	1-9/64



OE128C

Open-End Tubular, inches/mm

Size	mm	Stock No.	A	B	C	Fits Handle No.
7/8	—	OE128C	1/2	1-15/16	10-1/2	13B or 24B
15/16	—	OE130C	1/2	1-15/16	10-1/2	13B or 24B
1	—	OE132C	9/16	2-5/16	11-5/16	13B or 24B
1-1/16	27	OE134C	9/16	2-5/16	11-5/16	13B or 24B
1-1/8	—	OE136C	9/16	2-5/16	11-1/4	13B or 24B
1-1/4	32	OE140C	5/8	2-3/4	12-5/16	13B or 24B
1-5/16	33	OE142C	5/8	2-3/4	12-5/16	13B or 24B
1-3/8	35	OE144C	5/8	2-3/4	12-1/4	13B or 24B
1-7/16	36	OE146C	11/16	3-1/8	13-1/4	13B or 24B
1-1/2	38	OE148C	11/16	3-1/8	13-5/16	13B or 24B

ASME® B107.100

Flank Drive® Straight Box, inches/mm

	mm	12	A	B	C	Fits Handle No.
3/4	—	XH124C	1/2	1-1/4	10-13/16	13B or 24B
13/16	—	XH126C	1/2	1-1/4	10-13/16	13B or 24B
7/8	—	XH128C	5/8	1-7/16	10-15/16	13B or 24B
15/16	—	XH130C	5/8	1-7/16	10-15/16	13B or 24B
1	—	XH132C	11/16	1-9/16	11	13B or 24B
1-1/16	27	XH134C	11/16	1-9/16	11	13B or 24B
1-1/8	—	XH136C	11/16	1-11/16	11-1/8	13B or 24B
1-1/4	32	XH140C	3/4	1-15/16	13-1/2	13B or 24B
1-5/16	33	XH142C	3/4	1-15/16	13-1/2	13B or 24B
1-7/16	36	XH146C	7/8	2-3/16	13-5/8	13B or 24B
1-1/2	38	XH148C	7/8	2-3/16	13-3/4	13B or 24B
1-5/8	41	XH152C	15/16	2-3/8	13-3/4	13B or 24B
3-1/8	79	XH1100C	1-3/4	4-15/16	14-7/8	36B

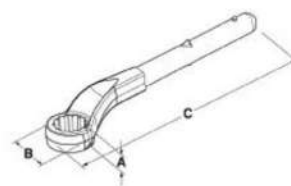
ASME® B107.100



XH1100C

Flank Drive® Offset Box, inches

	12	A	B	C	Fits Handle No.
1-1/16	X340B	5/8	1-21/32	10-1/2	24B
1-1/8	X360B	47/64	1-29/32	10-45/64	24B
1-1/4	X400C	47/64	1-29/32	10-45/64	24B
1-5/16	X420B	13/16	2	10-51/64	24B
1-3/8	X440B	7/8	2-5/64	10-51/64	24B
1-7/16	X460B	7/8	2-11/64	10-51/64	24B
1-1/2	X480B	15/16	2-1/4	10-29/32	24B
1-9/16	X500B	15/16	2-21/64	10-29/32	24B
1-5/8	X520B	1	2-27/64	11	24B
1-11/16	X540B	1-1/16	2-39/64	13-19/64	36B
1-3/4	X560B	1-1/16	2-39/64	13-19/64	36B
1-13/16	X580B	1-1/8	2-3/4	13-13/32	36B
1-7/8	X600B	1-1/8	2-3/4	13-13/32	36B
2	X640B	1-1/4	2-31/32	13-1/2	36B
2-1/16	X660B	1-1/4	2-31/32	13-1/2	36B
2-3/16	X700B	1-5/16	3-15/64	13-39/64	36B
2-1/4	X720B	1-5/16	3-15/64	13-39/64	36B
2-3/8	X760B	1-3/8	3-13/32	13-45/64	36B
2-9/16	X820B	1-1/2	3-21/32	13-51/64	36B
2-5/8	X840B	1-1/2	3-3/4	13-29/32	36B
2-3/4	X880B	1-5/8	3-15/16	14	36B
2-15/16	X940B	1-11/16	4-5/32	14-7/64	36B
3-1/8	X1000B	1-3/4	4-13/32	14-13/64	36B



X1000B



X340B



Manual Impact Wrenches

	Stock No.	A	B	C	Max Torque Output, ft-lb	Max Pull on Handles, lbs	Weight, lb (kg)
1/2	PHTPW50050	1-5/8	12	1-21/32	500	39*	6 (2.7)
3/4	PHTPW50075	1-5/8	12	1-21/32	500	39*	6 (2.7)
3/4	PHTPW80075	2	16	2	800	50*	11 (4.9)
1	PHTPW2000100	2-1/2	24	2-5/8	2,000	75*	23 (10.4)

*Max pull of handle, in-lb, to deliver torque output



PHTPW2000100



PHTPW50050



- Discontinue use of wrenches with chipped or significantly mushroomed striking pads.
- Do not use "cheater bars" on tubular handles.
- Read Safety Precautions on pages W1-W4

COMBINATION T- AND L-SHAPED WRENCHES

- Ergonomic soft grip handle provides comfort during repetitive tasks
- Deliver superior turning power
- Allow maximum pressure to be applied when loosening difficult fasteners with both "T" and "L" applications
- Blades are constructed from high-strength steel and hardened for durability

- Blade tips are black oxide coated to prevent chipping and to help maintain a secure fastener engagement
- Short blade provides maximum torque for tight quarters
- Long blade promotes quick fastener turning in difficult-to-access situations
- Hole in the handle for hanging tool or attaching a tether
- Color-coded handles identify metric and inch sizes at a glance



AWSGM800A

Hex/Soft Grip Handle, mm

Set Contains:

AWSGM800A

mm	Stock No.	T-Length, mm	Length, mm	
2	AWSGM2A	95	152	•
2.5	AWSGM2.5A	95	152	•
3	AWSGM3A	98	152	•
4	AWSGM4A	98	187	•
5	AWSGM5A	117	187	•
6	AWSGM6A	117	246	•
8	AWSGM8A	117	246	•
10	AWSGM10A	124	248	•

Set includes storage tray



AWBSGM800A

Ball Hex/Soft Grip Handle, mm

Set Contains:

AWBSGM800A

mm	Stock No.	T-Length, mm	Length, mm	
2	AWBSGM2A	95	152	•
2.5	AWBSGM2.5A	95	152	•
3	AWBSGM3A	98	152	•
4	AWBSGM4A	98	187	•
5	AWBSGM5A	117	187	•
6	AWBSGM6A	117	246	•
8	AWBSGM8A	117	246	•
10	AWBSGM10A	124	248	•

Set includes storage tray



AWSG800A

Hex/Soft Grip Handle, inches

Set Contains:

AWSG800A

	Stock No.	T-Length, inches	Length, inches	
3/32	AWSG06A	3-7/8	6	•
7/64	AWSG07A	3-7/8	6	•
1/8	AWSG08A	3-7/8	6	•
9/64	AWSG09A	3-7/8	6	•
5/32	AWSG10A	3-7/8	7-3/8	•
3/16	AWSG12A	4-3/4	7-3/4	•
7/32	AWSG14A	4-3/4	7-3/4	•
1/4	AWSG16A	4-3/4	9-5/8	•
5/16	AWSG20A	4-3/4	9-5/8	
3/8	AWSG24A	4-3/4	9-5/8	

Set includes storage tray



AWBSG800A

Ball Hex/Soft Grip Handle, inches

Set Contains:

AWBSG800A

	Stock No.	T-Length, inches	Length, inches	
3/32	AWBSG06A	3-7/8	6	•
7/64	AWBSG07A	3-7/8	6	•
1/8	AWBSG08A	3-7/8	6	•
9/64	AWBSG09A	3-7/8	6	•
5/32	AWBSG10A	3-7/8	7-3/8	•
3/16	AWBSG12A	4-3/4	7-3/4	•
7/32	AWBSG14A	4-3/4	7-3/4	•
1/4	AWBSG16A	4-3/4	9-5/8	•
5/16	AWBSG20A	4-3/4	9-5/8	
3/8	AWBSG24A	4-3/4	9-5/8	

Set includes storage tray

TORX®/Soft Grip Handle

Set Contains:

AWSGT800A

#	Stock No.	T-Length, inches	Length, inches	
T6	AWSGT6A	3-7/8	6	
T7	AWSGT7A	3-7/8	6	
T8	AWSGT8A	3-7/8	6	
T9	AWSGT9A	3-7/8	6	
T10	AWSGT10A	3-7/8	6	•
T15	AWSGT15A	3-7/8	7-3/8	•
T20	AWSGT20A	3-7/8	7-3/8	•
T25	AWSGT25A	4-3/4	7-5/8	•
T27	AWSGT27A	4-3/4	7-5/8	•
T30	AWSGT30A	4-3/4	9-5/8	•
T40	AWSGT40A	4-3/4	9-5/8	•
T45	AWSGT45A	4-3/4	9-3/4	•
T50	AWSGT50A	4-3/4	9-3/4	•

Set includes storage tray



AWSGT800A

TORX Plus®/Special Application

AWSGTRP20A T20 TORX® T-Shaped/L-Shaped Combination Wrench

- Extra long length of 10-1/2" and T20 Tamper-Proof TORX® configuration is specifically designed to access Mercedes-Benz® vehicle mirrors
- Short end is also a T20 Tamper-Proof TORX® configuration for use in tight quarters

AWSGTRP25A T25 TORX® T-Shaped/L-Shaped Combination Wrench

- Designed to access Bosch® mass air flow (MAF) sensor screws in various Mercedes®, Volvo® and other European vehicles



AWSGTRP20A

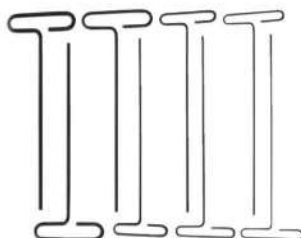


AWSGTRP25A

T-SHAPED



AWMCG1600B



GAW1900A



AWC1600B

Hex/ T-Handle, mm

Set Contains:

AWMCG1600B

mm	Stock No.	
2	AWMCG1602B	•
2.5	AWMCG16025B	•
3	AWMCG1603B	•
4	AWMCG1604B	•
5	AWMCG1605B	•
6	AWMCG1606B	•
8	AWMCG1608B	•
10	AWMCG1610B	•

Hex/T-Handle, inches

Set Contains:

GAW1900A

AWC1600B

	Standard Handle 9" Length	Red Handle 6" Length	Standard Handle	Red Handle
3/32	GAW1906	AWCG1606B	•	•
7/64	GAW1907	AWCG1607B	•	•
1/8	GAW1908	AWCG1608B	•	•
9/64	GAW1909	AWCG1609B	•	•
5/32	GAW1910	AWCG1610B	•	•
3/16	GAW1912	AWCG1612B	•	•
7/32	GAW1914	AWCG1614B	•	•
1/4	GAW1916	AWCG1616B	•	•
5/16	GAW1920	AWCG1620B		
3/8	GAW1924	AWCG1624B		



• Read Safety Precautions on pages W1-W4

T-SHAPED



AWBMC1600



AWBCG1600



AWCGT500



Ball Hex/
T-Handle, mm

Set
Contains:

AWBMC1600

mm	Stock No.	
2	AWBMC1602	•
2.5	AWBMC16025	•
3	AWBMC1603	•
4	AWBMC1604	•
5	AWBMC1605	•
6	AWBMC1606	•
8	AWBMC1608	•
10	AWBMC1610	•



Ball Hex/
T-Handle,
inches

Set
Contains:

AWBCG1600

	Stock No.	
3/32	AWBCG1606	•
7/64	AWBCG1607	•
1/8	AWBCG1608	•
9/64	AWBCG1609	•
5/32	AWBCG1610	•
3/16	AWBCG1612	•
7/32	AWBCG1614	•
1/4	AWBCG1616	•
5/16	AWBCG1620	
3/8	AWBCG1624	



TORX®/
T-Handle

Set
Contains:

AWCGT500

#	Stock No.	
T7	AWCGT7	
T8	AWCGT8	•
T10	AWCGT10	•
T15	AWCGT15	•
T20	AWCGT20	•
T25	AWCGT25	•
T27	AWCGT27	
T30	AWCGT30	
T40	AWCGT40	
T45	AWCGT45	



AWSTAND

Wrench Stands

AWSTAND Storage Stand for L-Shaped/T-Shaped Wrenches

- Mounting holes on top and bottom of stand provide many mounting locations
- Another AWSTAND can be added for increased storage options
- Stands can mount to a Slots-N-Dots™ Plus personal workcenter or lie flat on top of toolbox
- Stand holds the following wrench styles:
 - L- or T-shaped SAE hex 1/16–3/8" (excludes AWSG and AWSBSG series)
 - L- or T-shaped metric hex 2–10 mm (excludes AWSGM and AWSBSGM series)
 - L- or T-shaped TORX® T6 T50 (excludes AWSGT and AWSGTPT series)
- Metric or TORX® on one stand
- SAE and metric on one stand
- Metric and SAE ball wrenches

FOLDING SETS



AWMEF10K



AWMEF6K



AWMEF7K



AWMEF8K

Hex, mm

AWMEF10K 10 pc Metric Folding Hex Key Set

- Tri-fold design allows for up to five additional keys in the set, without increased size of housing
- Impact-modified nylon housing designed to minimize loss of torque transfer to hex keys and prevent damage if dropped
- Gold-finish plating provide superior corrosion protection to traditional coating methods
- Includes (10) folding hex keys (1.5–10 mm)

AWMEF6K 6 pc Metric Folding Hex Key Set

- Includes (6) folding hex keys (3–6, 8 and 10 mm)

AWMEF7K 7 pc Metric Folding Hex Key Set

- Includes (7) folding hex keys (1.5–6 mm)

AWMEF8K 8 pc Metric Folding Hex Key Set

- Includes (2–8 mm)

Hex, inches

AWEF11K 11 pc SAE Folding Hex Key Set

- Tri-fold design allows for up to five additional keys in the set, without increased size of housing
- Impact-modified nylon housing designed to minimize loss of torque transfer to hex keys and prevent damage if dropped
- Brite-finish plating provide superior corrosion protection to traditional coating methods
- Includes (11) folding hex keys (5/64–3/8")

AWEF6K 6 pc SAE Folding Hex Key Set

- Includes (6) hex keys (5/32–3/8")

AWEF9K 9 pc SAE Folding Hex Key Set

- Includes (9) folding hex keys (.050, 1/16, 5/64, 3/32, 7/64, 1/8, 9/64, 5/32 and 3/16")


AWEF11K

AWEF6K

AWEF9K

TORX®

AWTEF11K 11 pc TORX® Folding Hex Key Set

- Tri-fold design allows for up to five additional keys in the set, without increased size of housing
- Impact-modified nylon housing is designed to minimize the loss of torque transfer to hex keys and help prevent damage if dropped
- Black-oxide finish for corrosion protection
- Includes (11) folding hex keys (T8–T50)

AWTEF8K 8 pc TORX® Folding Key Set

- Includes (8) folding TORX® keys (T8, T10, T15, T20, T25, T27, T30 and T40)

AWTPEF10K 10 pc TORX® Plus Folding Hex Key Set

- Includes (10) folding hex keys (IP8–IP50)

AWTEFBH11K 11 pc TORX® Folding Ball Hex Key Set

- Black-oxide finish for corrosion protection
- Includes (11) folding hex keys (T8–T50)

AWTEFTP11K 11 pc TORX® Tamper-Proof Folding Key Set

- Includes (11) folding hex keys (TR8–TR50)


AWTEF11K

AWTEF8K

AWTPEF10K

AWTEFBH11K

AWTEFTP11K

Ball Hex, inches

AWEFBH11K 11 pc SAE Folding Hex Ball Key Set

- Tri-fold design allows for up to five additional keys in the set, without increased size of housing
- Impact-modified nylon housing designed to minimize loss of torque transfer to hex keys and prevent damage if dropped
- Brite-finish plating provide superior corrosion protection to traditional coating methods
- Ball-end allows fasteners to be turned continuously without removing key to reposition
- Includes (11) folding hex keys (5/64–3/8")

AWEFBH9K 9 pc SAE Folding Hex Ball Key Set

- Includes (9 pc) (5/64–1/4")

AWMEFBH10K 10 pc Metric Folding Hex Ball Key Set

- Includes (10) folding hex keys (1.5–10 mm)


AWEFBH11K

AWEFBH9K

AWMEFBH10K

Combination Folding Key Sets

AWHD8K 8 pc TORX®/Hex Folding Key Set

- Includes two TORX® sizes (T27, T40) and six hex sizes (5/32, 3/16, 7/32, 1/4, 5/16 and 3/8")
- Fits a wide range of Harley-Davidson® motorcycles

AWEF6M6K 12 pc Metric/SAE Folding Hex Key Set

- Includes (12) folding hex keys (SAE 5/64, 3/32, 7/64, 1/8, 9/64 and 5/32") (metric 1.5, 2, 2.5, 3, 4 and 5 mm)
- Turn-and-flip feature eliminates the need for constant removal of the tool to reposition it in the screw head when working next to obstructions

AWCPEF16K 16 pc Metric/SAE Folding Combination Hex Key Set

- Set includes (16 pc) AWEF9K hex set (.050–3/16") and AWMEF7K metric hex set (1.5–6 mm)


AWHD8K

AWEF6M6K

AWCPEF16K


- Do not exceed rated torque
- Do not use to break fasteners loose
- Read Safety Precautions on pages W1–W4



AWBPH13



AWBS13



AWBXL13



BHS13A



BHS7A



DBHS13



AWBML9



AWMBPH9



AWMBS9



BHM9A



DBHM9

Double Ball Hex Key Sets

AWBPH13 13 pc SAE L-Shaped Ball Hex Wrench Set

- Screw-holding tip holds fastener to tool for delicate installations
- Includes 0.05, 1/16, 5/64, 3/32, 7/64, 1/8, 9/64, 5/32, 3/16, 7/32, 1/4, 5/16 and 3/8" sizes
- Includes plastic index

AWBS13 13 pc SAE L-Shaped Stubby Ball Hex Wrench Set

- Stubby length for access to tight quarters
- Includes: 0.05, 1/16, 5/64, 3/32, 7/64, 1/8, 9/64, 5/32, 3/16, 7/32, 1/4, 5/16 and 3/8" sizes
- Includes plastic index

AWBXL13 13 pc SAE L-Shaped Extra-Long Ball Hex Wrench Set

- Includes: 0.05, 1/16, 5/64, 3/32, 7/64, 1/8, 9/64, 5/32, 3/16, 7/32, 1/4, 5/16 and 3/8" sizes
- Includes plastic index

BHS13A 13 pc SAE L-Shaped Ball Hex Wrench Set

- Includes: 0.05, 1/16, 5/64, 3/32, 7/64, 1/8, 9/64, 5/32, 3/16, 7/32, 1/4, 5/16, and 3/8" sizes
- Includes plastic index

BHS7A 7 pc SAE L-Shaped Ball Hex Wrench Set

- Includes 5/64, 3/32, 7/64, 1/8, 9/64, 5/32 and 3/16" sizes
- Includes plastic index

DBHS13 13 pc SAE L-Shaped Double Ball Hex Wrench Set

- 100° angle bend allows for access to fasteners a 90° stubby key cannot reach
- 100° angle provides a ±10° range of motion, or full 20°, creating clearance to help prevent "knuckle-busting"
- Ball hex on short-arm has a thicker "neck" than traditional ball hex designs, providing up to 50% more torque on the long arm
- Long arm utilizes an XL-pattern to access fasteners in deep recesses, with standard ball-hex tip
- Includes: 0.05, 1/16, 5/64, 3/32, 7/64, 1/8, 9/64, 5/32, 3/16, 7/32, 1/4, 5/16, 3/8" sizes
- Includes plastic index

Ball Hex Key Sets

AWBML9 9 pc Metric Extra-Long L-Shaped Ball Hex Wrench Set

- Includes 1.5, 2, 2.5, 3, 4, 5, 6, 8 and 10 mm sizes
- Includes plastic index

AWMBPH9 9 pc Metric L-Shaped Ball Hex Wrench Set

- Screw-holding tip holds fastener to tool for delicate installations
- Includes 1.5, 2, 2.5, 3, 4, 5, 6, 8 and 10 mm sizes
- Includes plastic index

AWMBS9 9 pc Metric Stubby L-Shaped Ball Hex Wrench Set

- Stubby length for access in tight quarters
- Includes: 1.5, 2, 2.5, 3, 4, 5, 6, 8 and 10 mm sizes
- Includes plastic index

BHM9A 9 pc Metric L-Shaped Ball Hex Wrench Set

- Includes 1.5, 2, 2.5, 3, 4, 5, 6, 8 and 10 mm sizes
- Includes plastic index

DBHM9 9 pc Metric L-Shaped Double Ball Wrench Set

- 100° angle bend allows for access to fasteners a 90° stubby key cannot reach
- Ball hex on short-arm has a thicker "neck" than traditional ball hex designs, providing up to 50% more torque on the long arm
- Includes 1.5, 2, 2.5, 3, 4, 5, 6, 8 and 10 mm sizes
- Includes plastic index


AWM110DHK


AWM110DHK**
AWM110DK*
AWM140DK*


AW1013DK


AW1015DHK**
AW1013DK*
AW1020DK*

Hex, mm, Zinc

Set Contains:

	Stock No.	mm	A			
Standard Length	AWM2D	2	47.7	•	•	•
	AWM2-1/2D	2.5	52.0	•	•	•
	AWM3D	3	58.6	•	•	•
	AWM4D	4	65.6	•	•	•
	AWM5D	5	75.6	•	•	•
	AWM6D	6	82.2	•	•	•
	AWM7D	7	92.4	•	•	•
	AWM8D	8	99.2	•	•	•
	AWM9D	9	105.1	•	•	•
	AWM10D	10	111.4	•	•	•
	AWM12D	12	139.3	•	•	•
	AWM14D	14	138.8	•		
	AWM17D	17	167.2	•		
AWM19D	19	193.6	•			
Long	AWML1.5D	1.5	77.7			
	AWML2D	2	83.0			
	AWML2.5D	2.5	89.8			
	AWML3D	3	100.0			
	AWML4D	4	107.0			
	AWML5D	5	118.5			
	AWML6D	6	141.0			
	AWML8D	8	161.5			
	AWML10D	10	172.0			
	AWML12D	12	193.6			

*Set includes metal storage index
**Set includes storage bag

Hex, inches, Zinc

Set Contains:

	Stock No.	Hex	A			
	AW028D	0.028	1-1/4	•	•	•
	AW035D	0.035	1-5/16	•	•	•
	AW050D	0.050	1-3/4	•	•	•
	AW2D	1/16	1-3/4	•	•	•
	AW2-1/2D	5/64	1-7/8	•	•	•
	AW3D	3/32	2	•	•	•
	AW3-1/2D	7/64	2-1/8	•	•	•
	AW4D	1/8	2-1/4	•	•	•
	AW4-1/2D	9/64	2-3/8	•	•	•
	AW5D	5/32	2-1/2	•	•	•
	AW6D	3/16	2-3/4	•	•	•
	AW7D	7/32	3	•	•	•
	AW8D	1/4	3-1/4	•	•	•
	AW10D	5/16	3-3/4	•	•	•
	AW12D	3/8	4-1/4	•	•	•
	AW14D	7/16	4-3/4	•		
	AW16D	1/2	5-1/4	•		
	AW18D	9/16	5-3/4	•		
	AW20D	5/8	6-1/4	•		
	AW24D	3/4	7-1/4	•		

*Set includes metal storage index
**Set includes storage bag

Hex/Long, inches, Zinc

Set Contains:

	Stock No.	Hex	A			
	AWL3D	3/32	3-1/8	•	•	
	AWL3-1/2D	7/64	3-1/2	•	•	
	AWL4D	1/8	3-3/4	•	•	
	AWL4-1/2D	9/64	4	•	•	
	AWL5D	5/32	4-1/8	•	•	
	AWL6D	3/16	4-1/2	•	•	
	AWL7D	7/32	4-7/8	•	•	
	AWL8D	1/4	5-1/4	•	•	
	AWL10D	5/16	6	•	•	
	AWL12D	3/8	6-3/4	•	•	
	AWL14D	7/16	7-1/2			
	AWL16D	1/2	8-1/4			
	AWL18D	9/16	9			
	AWL20D	5/8	9-3/4			

*Set includes metal storage index
**Set includes storage bag


AWL1010DHK


• Read Safety Precautions on pages W1-W4

L-SHAPED



AWMG9



AWMG9
Set Contains:

Hex, mm, Gold Finish

Stock No.	mm	
AWMG9-1	1.5	•
AWMG9-2	2	•
AWMG9-3	2.5	•
AWMG9-4	3	•
AWMG9-5	4	•
AWMG9-6	5	•
AWMG9-7	6	•
AWMG9-8	8	•
AWMG9-9	10	•



AWS13



AWS13
Set Contains:

Hex, SAE, Natural Finish

Stock No.		
AWS13-1	1/20	•
AWS13-2	1/16	•
AWS13-3	5/64	•
AWS13-4	3/32	•
AWS13-5	7/64	•
AWS13-6	1/8	•
AWS13-7	9/64	•
AWS13-8	5/32	•
AWS13-9	3/16	•
AWS13-10	7/32	•
AWS13-11	1/4	•
AWS13-12	5/16	•
AWS13-13	3/8	•



AWTPH8

AWTPH8
Set Contains:

TORX®/Screw Holding Tip

Stock No.	#	
AWTPHT9	T9	•
AWTPHT10	T10	•
AWTPHT15	T15	•
AWTPHT20	T20	•
AWTPHT25	T25	•
AWTPHT27	T27	•
AWTPHT30	T30	•
AWTPHT40	T40	•



AWTR8



AWTR8
Set Contains:

TORX®/Tamper-Resistant

Stock No.	#	
AWTR8-1	TR9	•
AWTR8-2	TR10	•
AWTR8-3	TR15	•
AWTR8-4	TR20	•
AWTR8-5	TR25	•
AWTR8-6	TR27	•
AWTR8-7	TR30	•
AWTR8-8	TR40	•



AWMXL10



AWMXL10
Set Contains:

Hex/Extra-Long, mm

Stock No.	mm	A	B	
AWMXL10-1.5	1.5	91.5	15	•
AWMXL10-2	2	102	17.5	•
AWMXL10-2.5	2.5	114.5	20	•
AWMXL10-3	3	129	22	•
AWMXL10-4	4	146	26	•
AWMXL10-5	5	165	32	•
AWMXL10-6	6	132	32.5	•
AWMXL10-7	7	160	37	•
AWMXL10-8	8	203	43	•
AWMXL10-10	10	223	49	•



AWT100KA



AWT100KA
Set Contains:

TORX®

Stock No.	#	A	B	
AWT8A	T8	.137	1-7/8	
AWT9A	T9	.148	1-7/8	
AWT10A	T10	.162	2	•
AWT15A	T15	.194	2-1/8	•
AWT20A	T20	.228	2-1/4	•
AWT25A	T25	.262	2-3/8	•
AWT27A	T27	.295	2-1/2	•
AWT30A	T30	.218	2-3/4	•
AWT40A	T40	.262	3	•
AWT45A	T45	.430	3-5/8	•
AWT50A	T50	.348	3-3/4	•
AWT55A	T55	.442	4-1/4	•


TORX®/Extra-Long

 Set Contains: **AWTXL8**

Stock No.	#	A	B	
AWTXL8-T9	T9	4	0.74	•
AWTXL8-T10	T10	4.25	0.81	•
AWTXL8-T15	T15	4.6	0.88	•
AWTXL8-T20	T20	4.95	0.94	•
AWTXL8-T25	T25	5.61	1.03	•
AWTXL8-T27	T27	6.02	1.18	•
AWTXL8-T30	T30	6.496	1.26	•
AWTXL8-T40	T40	7	1.46	•


Double Ball TORX® Key

 Set Contains: **DBT7**

Stock No.	#	
DBT10	T10	•
DBT15	T15	•
DBT20	T20	•
DBT25	T25	•
DBT27	T27	•
DBT30	T30	•
DBT40	T40	•


Hex, Extra-Long, SAE

 Set Contains: **AWXL13**

Stock No.	#	A	B	
AWXL13-050	0.05	3.1	0.58	•
AWXL13-1/16	1/16	3.4	0.63	•
AWXL13-5/64	5/64	3.7	0.69	•
AWXL13-3/32	3/32	4	0.74	•
AWXL13-7/64	7/64	4.25	0.81	•
AWXL13-1/8	1/8	4.6	0.88	•
AWXL13-9/64	9/64	4.95	0.94	•
AWXL13-5/32	5/32	5.3	1	•
AWXL13-3/16	3/16	5.4	1.1	•
AWXL13-7/32	7/32	5.85	1.3	•
AWXL13-1/4	1/4	6.7	1.4	•
AWXL13-5/16	5/16	7.4	1.6	•
AWXL13-3/8	3/8	8.2	1.8	•

ADJUSTABLE
Flank Drive® Plus Adjustable/Cushion Handle

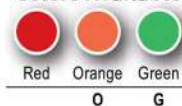
- Flank Drive® Plus provides up to 62% more turning power, allowing for more torque to the handle and reducing fastener wear
- Durable finish provides corrosion resistance
- High-strength alloy steel provides greater wrench strength and longer tool life

Set Contains:

Stock No.	A inches (mm)	B inches (mm)		
FADH6C	6 (152)	3/4 (19)		•
FADH8B	8 (203)	15/16 (24)	•	•
FADH10B	10 (254)	1-1/8 (29)		•
FADH12C	12 (304)	1-5/16 (33)	•	•

Sets include storage tray

ASME® Standard


Colors Available


ADD SUFFIX TO STOCK NUMBER FOR SPECIAL COLORS.



- Always pull wrench in direction of fixed jaw.
- Read Safety Precautions on pages W1-W4

ADJUSTABLE



Colors Available

Red Orange Green
O G
ADD SUFFIX TO STOCK NUMBER FOR SPECIAL COLORS.

Adjustable

- Opposing fractional and metric quick sizing scales are provided for convenience
- High-strength alloy steel machined to exacting specs and precision heat treated for strength and durability
- Nickel-chrome finish helps protect against corrosion and speeds clean up

Stock No.	A inches (mm)	B inches (mm)
AD6C	6 (155)	25/32 (20)
AD8C	8 (205)	1-1/16 (27)
AD10C	10 (255)	1-3/16 (30)
AD12C	12 (305)	1-11/32 (34)
ADST8A	8 (205)	1-3/16 (30)

ASME® B107.100

Wide-Mouth Adjustable/Cushion Handle

- Opens larger than standard adjustable wrench
- Longer jaws and slimline design for greater reach
- ADHW6A opens as wide as an 8" adjustable wrench; ADHW8A opens as wide as a 10" adjustable wrench

Stock No.	A inches (mm)	B inches (mm)
ADHW6A	6 (152)	1-1/4 (32)
ADHW8A	8 (203)	1-1/2 (38)
ADHW10A	10 (254)	1-3/4 (44.5)
ADHW12A	12 (305)	2 (50.8)

ASME® B107.100



Pipe Wrenches

Stock No. Coated Handle	Stock No. Aluminum Handle	A	B
PW6C	—	6	3/4
PW8C	—	8	1
PW10C	PWA10A	10	1-1/2
PW12C	—	12	2
PW14C	PWA14A	14	2
PW18C	PWA18A	18	2-1/2
PW24C	PWA24A	24	3
PW36C	PWA36A	36	5



Colors Available

Red Orange Green
O G
ADD SUFFIX TO STOCK NUMBER FOR SPECIAL COLORS.

Pliers Wrenches

- Inwardly angled teeth (fine teeth at back of jaw, coarse teeth at front of jaw) for a stronger grip
- Quick adjustment of grip width
- Built-in guard against unthreading
- Soft, warm to the touch, high-friction handle surfaces with a strong, stable core

Stock No.	A	B	C	D	Weight, lb
PWZ0A	8-3/16	1-1/2	5/16	9/16	1
PWZ1A	12-5/8	1-3/4	1/2	3/4	1-5/8
PWZ2A	17	2-1/2	5/8	13/16	2-1/2
PWZ3A	21-1/2	3-1/2	3/4	1	6-3/8
PWZ4*	28-5/8	4-5/8	1-1/2	1-5/16	12
PWZ5*	41-3/4	6-5/16	1-1/2	1-3/8	17

*Only available in Red

Standard, Industrial (Blue-Point®)

- Inch and metric scales on fixed jaw indicate wrench opening
- Fixed jaw and handle forged in one piece to ensure maximum strength
- Wrench is balanced to minimize wrist stress
- Hole in the handle end for a tether or hanging

Stock No.	A inches (mm)	B inches (mm)		
GAJ4A	4 (108)	1/2 (13)		
GAJ6A	6 (160)	1 (25.4)	•	
GAJ8A	8 (210)	1-1/8 (29)	•	
GAJ10A	10 (260)	1-9/32 (33)	•	
GAJ12A	12 (310)	1-1/2 (38)	•	
GAJ15A	15 (385)	1-19/32 (43)	•	
GAJ18A	18 (450)	2-1/16 (52)	•	
GAJ24A	24 (610)	2-7/16 (62)	•	
GAJS30*	30 (778)	3-11/32 (85)		
GAJS30A	30 (778)	3-11/32 (85)		

Sets include storage tray ASME® B107.10
 Side-Adjustable nut style provides smoother operation, allows greater jaw opening and offers minimum jaw play.

Set Contains:
 BLPADJ703
 BLPADJ404


Soft Grip, Industrial (Blue-Point®)

Stock No.	A inches (mm)	B inches (mm)		
GAJ6SG	6 (160)	1 (25.4)	•	
GAJ8SG	8 (210)	1-1/8 (29)	•	
GAJ10SG	10 (260)	1-9/32 (32.8)	•	
GAJ12SG	12 (310)	1-1/2 (38)	•	

Set includes storage tray

Set Contains:
 BLPADJ404SG


Aluminum (for AN fittings)

- Securely tighten expensive AN fittings to reduce the risk of damage in aircraft, marine and industrial applications, as well as for race and show cars
- Machined from aluminum billet to exacting tolerances and made from quality heat-treated aluminum

Stock No.	Overall Length, inches (mm)	Maximum Opening
ANADJ8A	8 (203)	AN #10 (1")


SPECIAL APPLICATION


N6893B

Valve Persuader
N6893B 1-1/4" Valve Persuader Wrench

- Persuader end provides extra leverage on valve wheels
- Hooks around valve stems and protrudes through spokes
- 15" long
- Opening is 1-1/4"



FRW10

Extension Wrench
FRW10 Offset Extension Wrench

- 10" of reach to fastener
- 0° swing arc
- Allows impact and pneumatic wrenches to reach fasteners buried in assemblies
- Allows ratchet to swing free and clear where obstructions limit swing arc closer to the fastener



- Do not use "cheater bars" on handles.
- Do not push on handles.
- Always pull wrench in direction of fixed jaw.
- Plastic handle does not protect against electric shock.
- Read Safety Precautions on pages W1-W4

SPECIAL APPLICATION



AFS482C

Adjustable Face Pin Spanners

Used for servicing seal and packing nuts on hydraulic cylinders

Stock No.	A	B	C	D
AFS482C	6-3/8	2	3/16	5/32
AFS483C	8-1/4	3	1/4	3/16
AFS484C	10-3/8	4	5/16	1/4



304AHSKA

Adjustable Hook Spanners

- Service collars, rings and bearings
- Single jaw and roll pin construction with industrial finish
- Assure that jaw hook is properly positioned when in use

Set Contains:

304AHSKA

Stock No.	A	B	C	D	
AHS300C	3/4-2	1/8	6-3/8	11/32	•
AHS301C	1-1/4-3	5/32	8-1/8	13/32	•
AHS304C	2-4-3/4	3/16	11-3/8	15/32	•
AHS307C	4-1/2-6-1/2	1/4	12-1/8	15/32	•



304APSKA

Adjustable Pin Spanners

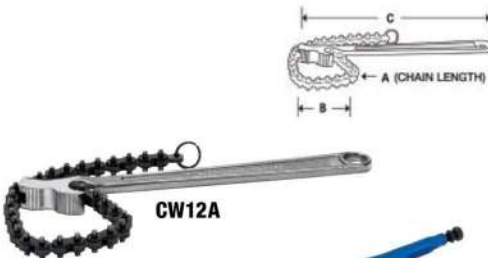
- Remove rings, collars and lock nuts
- Assure that jaw hook is properly aligned when in use

Set Contains:

304APSKA

Stock No.	A	B	C	D	E	
APS351C	3/4-2	1/8	6-3/8	1/8	11/32	•
APS357C	1-1/4-3	3/16	8-1/8	3/16	11/32	•
APS363C	2-4-3/4	1/4	11-3/8	1/4	15/32	•
APS366C	4-1/2-6-1/4	1/4	12-1/8	3/8	15/32	•

SPECIAL APPLICATION (Blue-Point®)



CW12A

Chain Wrenches (Blue-Point®)

Stock No.	A	B	C
CW12A	16	4	12
CW15A	19	5	15
CW24A	23	6	24

VGP181101 Replacement Chain



VGP18110

VGP18110 Locking Chain Wrench (Blue-Point®)

- Wraps around and holds irregular shaped objects like oil filters and mufflers
- Chain capacity: up to 6-9/32" (160 mm)
- Handle length: 9-27/32" (250 mm)

VGP181101 Replacement Chain, for VGP18110 (Blue-Point®)

- Replacement chain for VGP18110



BLPSTWR4A

Strap Wrenches (Blue-Point®)

BLPSTWR4A 4" Strap Wrench (Blue-Point®)

- 4" max diameter
- Adjusts to fit any circumference or irregular shape
- Will not scratch or damage surfaces
- Cushioned grip for maximum comfort
- Wrench strap is 1/2" (13 mm) wide



BLPSTWR6A

BLPSTWR6A 6" Strap Wrench (Blue-Point®)

- 6" max diameter
- Adjusts to fit any circumference or irregular shape
- Will not scratch or damage surfaces
- Cushioned grip for maximum comfort
- Heavy-duty construction for longer life
- Wrench strap is 3/4" (19 mm) wide