

SCREW EXTRACTION



SP31320

**SCREW EXTRACTOR SET
DRILL BIT & GUIDE
25 PIECE**

- For extracting broken screws, studs & bolts: 5mm to 16mm
- Threads designed to remove broken fasteners without breaking or jamming
- Fluted type extractors that provide a solid grip on broken studs and screws
- Housed in heavy duty storage case and EVA foam tray

SET INCLUDES

- 5x Drill Bits: 1/8", 3/16", 1/4", 5/16", 11/32"
- 5x Extractor Pins Sized to Match Drill Bits
- 5x Hex Extracting Drivers to Match Extractor Pins
- 10x Stud Drilling Guides: 9/32, 5/16, 11/32, 3/8, 13/32, 7/16, 15/32, 1/2, 17/32 & 9/16"



SP31301

**SCREW EXTRACTOR SET
SPIRAL TYPE - 5 PIECE**

- Remove broken studs, screws & pipe fittings
- Manufactured from heat treated chrome molybdenum steel

SIZE RANGE

- Metric: M4 - M20
- SAE: 5/32 - 3/4"



SP31302

**SCREW EXTRACTOR SET
STRAIGHT TYPE - 5 PIECE**

- Remove broken studs, screws, bolts, etc
- Manufactured from heat treated chrome molybdenum steel
- Square section aids removal of extractor from screws

SIZE RANGE

- Metric: M4 - M20
- SAE: 5/32 - 3/4"

NUT SPLITTERS

SP31210

**NUT SPLITTER SET
4 PIECE**

- Splitting of seized bolts and/or over tightened bolts without damaging the thread
- Chrome molybdenum steel blades with forged high carbon steel grips
- Hardened, tempered & chrome plated for rust resistance

SET INCLUDES

- 9-12mm, 12-16mm, 16-22mm & 22-27mm



ALSO AVAILABLE INDIVIDUALLY

**NUT SPLITTERS
INDIVIDUAL**

SIZE	MODEL
9-12mm	SP31211
12-16mm	SP31212
16-22mm	SP31213
22-27mm	SP31214

WORKSHOP

Workshop need an upgrade? At SP Tools we have it all. Creepers, stools, brushes and safety gear. Check out the new SUMO Creeper, especially made for the bigger built/taller blokes in the workshop.

WORKSHOP MOBILE SEATS & STOOLS



SPR-50

**WORKSHOP SEAT
HEAVY DUTY**

- Heavy duty chrome polished frame
- Ball bearing oversized swivel castors
- Easy access storage tray
- High density foam seat



SPR-55

**STOOL WITH STORAGE
PNEUMATIC**

- Pneumatic seat adjusts from 420 to 533mm
- 430mm reinforced steel base with 5 heavy duty swivel castors
- 3 Section tray base with removable magnetic pad
- High density foam padded seat
- Chrome plated heavy duty steel frame
- Recommended for garage and shop use
- Note: Tools not included



SPR-60

**STOOL WITH SWIVEL TOP
PNEUMATIC**

- Pneumatic seat adjusts from 660 to 787mm
- High density foam padded seat
- Chrome plated heavy duty steel frame
- Non-slip rubber feet

T8R58

**WORKSHOP SEAT - 3 DRAWERS
888 SERIES**

- Heavy duty frame
- High density foam padded seat
- Ball bearing slide drawers
- Easy access spray can holder
- Swivel castors

DIMENSIONS:

- Unit: 370 x 400 x 367mm
- Drawers (3): 190 x 300 x 40mm



MECHANICS CREEPERS



**20%
WIDER**

SPR-48

**MECHANICS CREEPER
SUMO**

- 20% wider - Ideal for bigger built/ taller blokes
- Heavy duty steel frame
- 6 heavy duty castors
- Wide padded body & head rest
- Capacity: 150kg (330 lbs)
- 1030mm x 540mm



SPR-44

MECHANICS CREEPER

- Heavy duty steel frame
- 6 heavy duty wheels
- Padded body & head rest
- Capacity: 100Kg (220 lbs)
- 1030mm x 440mm



**ADJUSTABLE
HEAD REST**

SPR-46

**MECHANICS CREEPER
ADJUSTABLE HEAD REST**

- Heavy duty steel frame
- 4 heavy duty castors
- Padded body & head rest
- Adjustable head rest
- Capacity: 80Kg (176 lbs)
- 1030mm x 440mm



SPR-78

**MECHANICS CREEPER
FAST BACK**

- IDEAL FOR WORK ON TRUCKS & BUSES
- Ultra stable three wheel configuration
 - Ergonomic shape
 - Heavy duty HDPE shock proof body
 - 3" twin axis sealed bearing control caster
 - 7" dual bearing all-terrain wheels
 - Soft Polyurethane headrest
 - Built-in tool trays
 - 2 Position ground clearance (Ultra Low & Off Road)
 - Air flow neck vent
 - Capacity: 225Kg (500 lbs)
 - 1040mm x 570mm x 230mm

VEHICLE PROTECTION



SPR-11

**NYLON
PROTECTIVE
SEAT COVER**

- Heavy duty nylon
- Easy slip-on design
- Protects seats against oil, grease and water



SPR-08

**FABRIC
PROTECTIVE
SEAT COVER**

- Premium quality and durable
- Protects seats against oil, grease dirt and water
- Universal fit
- Easy slip-on design
- Machine washable

SPR-22

**MECHANICS MAGNETIC
MUDGUARD / FENDER PROTECTOR**

- Vinyl with soft inner to protect car paintwork
- Contains hidden sleeved magnets to hold cover firmly in position
- Resistant to oil, grease & water
- 810mm (w) x 645mm (H)



SPR30

KNEELING PAD

- Soft kneeling pad provides comfort when kneeling for long periods of time
- Reduces knee and lower back pain
- Tough, lightweight and Easy clean cover
- Includes a convenient carry handle
- Size: 550mm x 320mm x 22mm



PARTS BRUSHES



SP30896

**PARTS BRUSH
"FLOW-THROUGH"**

- "Flow-Through" brushes are designed for parts washing sinks with circulating solvent system
- A continuous stream of solvent is delivered through the whole bristle head not just through the centre



SP30895

**PARTS BRUSH
"BUCKET"**

- "Bucket brushes" are designed for hand use in a parts washing sink or solvent container

SANDBLASTING GUN

SP65010

SANDBLASTING GUN - 1 LITRE

- Adjustable nozzle assures that the amount of sand can be regulated as required
- When the handle is activated, the airflow sucks the sand up out of the container and is ejected from nozzle at high speed



SPRAY CLEANING GUNS

SP65011

SPRAY CLEANING GUN 1 LITRE

- PE tank and tube with adjustable spray/jet nozzle
- Lance with adjustable nozzle with cone



SP65012

SPRAY CLEANING GUN 1 LITRE - FLEXIBLE

- PE tank and tube with adjustable spray/jet nozzle
- Flexible tube
- Lance with adjustable nozzle with cone



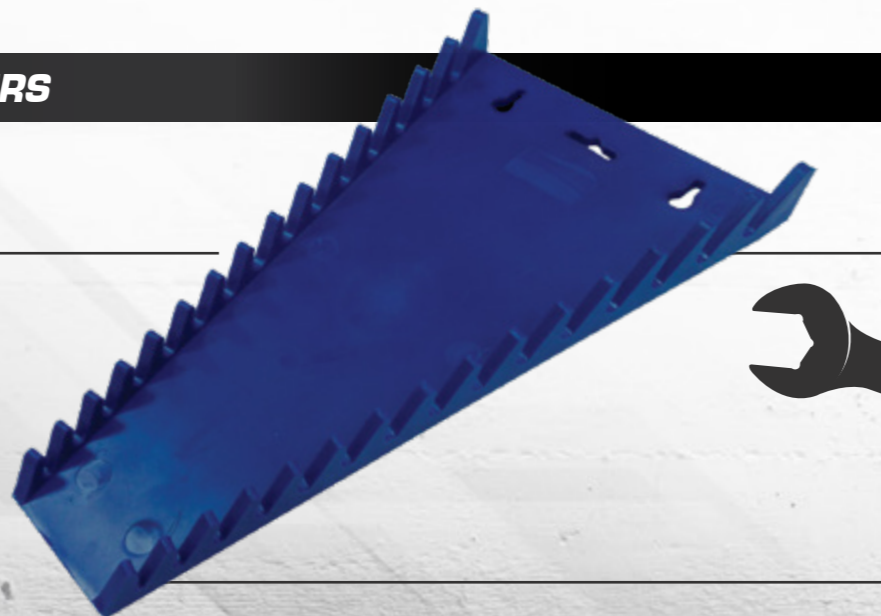
WORKSHOP ORGANISERS

SP31715

SPANNER RACK

HOLDS UP TO 15 SPANNERS

- Versatile spanner organiser, designed to neatly store open end, ring or combination spanners.
- Manufactured from high impact plastic
- Built in eyelet mounting holes ideal for wall mounting, peg boards, shadow boards or tool cabinets



CONTINUED **WORKSHOP ORGANISERS**

SPANNER RACKS

HOLDS UP TO 12 SPANNERS

- Versatile spanner organiser, designed to neatly store open end, ring or combination spanners.
- Manufactured from high impact plastic
- Built in eyelet mounting holes ideal for wall mounting, peg boards, shadow boards or tool cabinets
- Built in handle for easy transport
- Fuel and solvent resistant

AVAILABLE IN 2 OPTIONS

TYPE	MODEL
REVERSE	SP31717
FORWARD	SP31716



SP31720

SPANNER RACK - STUBBY

HOLDS UP TO 12 SPANNERS

- Versatile stubby spanner organiser, designed to neatly store open end, ring or combination spanners.
- Manufactured from high impact plastic
- Built in handle for easy transport
- Fuel and solvent resistant



SP31710

PLIER RACK

HOLDS UP TO 12 PLIERS

- Versatile organiser, designed to neatly store up to 12 sets of pliers
- Manufactured from high impact plastic
- Adjustable dividers



SOCKET RAIL SPRING LOADED

SOCKETS NOT INCLUDED

- Spring loaded clips hold sockets firmly to rail
- Holds up to 16 sockets

AVAILABLE IN 3 OPTIONS

SIZE	MODEL	CAPACITY
1/4"DR	SP201R	16 SOCKETS
3/8"DR	SP202R	16 SOCKETS
1/2"DR	SP203R	16 SOCKETS



SOCKET RAIL TWIST LOCK

SOCKETS NOT INCLUDED

- Twist Lock sockets onto rail by turning them to the right - Unlocked by turning to the left

AVAILABLE IN 3 OPTIONS

SIZE	MODEL	CAPACITY
1/4"DR	SP201RQM	13 SOCKETS
3/8"DR	SP202RQM	14 SOCKETS
1/2"DR	SP203RQM	16 SOCKETS



SOCKET RAIL MAGNETIC

SOCKETS NOT INCLUDED

- Ball bearings hold sockets firmly to rail
- Magnetic rail base

ONLY 1/4"DR AVAILABLE

SIZE	MODEL	CAPACITY
1/4"DR	SP201RM	10 SOCKETS



*NOTE: SOCKETS NOT INCLUDED, RAIL ONLY

*NOTE: SOCKETS NOT INCLUDED, RAIL ONLY

*NOTE: SOCKETS NOT INCLUDED, RAIL ONLY

SAFETY GEAR & GLOVES

GLOVES - GENERAL PURPOSE

- Stretch Spandex fabric ensures a comfortable fit
- Thin wall reinforced palm grip for better feel
- High quality Velcro for firm wrist grip
- Machine washable

AVAILABLE IN 2 SIZES

CAPACITY	MODEL
Large	SP68800
X-Large	SP68801



ADDED DURABILITY & BREATHABILITY
Breathable stretch fabric keeps your hands cool and dry while the synthetic finger tips and reinforced thumb panel provide added durability.

HIGH FEEL
High feel synthetic leather palm forms to your hand to allow for more feel, ideal for many jobs around the workshop.



GLOVES - GENERAL PURPOSE HIGH-FEEL 0.5MM

- Stretch Spandex fabric ensures a comfortable fit
- Thin 0.5mm wall reinforced non-slip palm grip for better feel
- High quality Velcro for firm wrist grip
- Touch screen capable index finger
- Machine washable

AVAILABLE IN 2 SIZES

CAPACITY	MODEL
Large	SP68810
X-Large	SP68811



ANTI SLIP GRIP
SP's Anti-slip grip provides a strong, durable grip in all wet, dry and oily conditions and wraps around the index finger and thumb to ensure you have more control with less effort.

0.5mm HIGH FEEL
High feel 0.5mm synthetic leather palm forms to your hand to allow for more feel, especially helpful with precision work.



SPR88

EAR PROTECTION EXTREME PERFORMANCE

- Quality sound absorbing foam to protect ears
- Class 5 32db protection for high noise applications
- Soft edged Hi-vis ear cups for maximum comfort and increased visibility and safety
- Adjustable tensioned headband for security and comfort



SPR80

SAFETY GLASSES - CLEAR LENS

- Tough polycarbonate clear lenses
- Wrap-around design to maximise coverage and protection in high impact environments
- Protects eyes from all angles
- Light weight and comfortable to wear

SP30912

PARTS TRAY - MAGNETIC 270 X 295 X 30MM

- Large but low profile parts tray is great for all jobs around the work shop, big or small, especially parts storage
- Magnetic based stainless steel tray holds itself and contents in any position avoiding loss of parts
- 4 Heavy duty magnetic plates securely hold the tray to any steel surface



SP30913

PARTS TRAYS & HOOKS SET MAGNETIC - 4 PIECE

- Great parts storage
- Magnetic based stainless steel trays and hooks hold themselves and contents in any position avoiding loss of parts
- Heavy duty magnetic plates securely hold the trays and hooks to any steel surface

SET INCLUDES

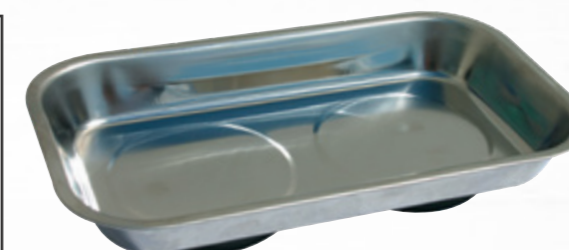
- 1pc magnetic tray : 225 x 65 x 16mm
- 1pc magnetic tray : 95 x 65 x 14mm
- 2pc magnetic hooks - Each holding up to 3.64kg (8 Lbs)



SP30911

PARTS TRAY - MAGNETIC 140 X 240MM

- Low profile parts tray is great for all jobs around the work shop, big or small, especially parts storage
- Magnetic based stainless steel tray holds itself and contents in any position avoiding loss of parts
- 2 Heavy duty magnetic plates securely hold the tray to any steel surface



SP30910

PARTS TRAY - MAGNETIC 150MM DIA.

- Low profile parts tray is great for all jobs around the work shop, big or small, especially parts storage
- Magnetic based stainless steel tray holds itself and contents in any position avoiding loss of parts
- Heavy duty magnetic plate securely hold the tray to any steel surface



WIRE BRUSHES

CARBON STEEL BRISTLES

Removes rust and corrosion, polishing metal surfaces and blending surface junctures

STAINLESS STEEL BRISTLES

Clean parts that need heavy duty scrubbing

BRASS BRISTLES

Clean unfinished metal parts without damaging surfaces or fine features

NYLON BRISTLES

Clean delicate parts and detail vehicle interiors

SP30893

WIRE BRUSH SET 355MM - 3 PIECE

- Ideal for heavy duty cleaning
- 3 rows of bristles on each brush
- Ergonomic polypropylene handles

SET INCLUDES

- Carbon Steel Bristled Brush
- Stainless Steel Bristled Brush
- Brass Bristled Brush



WIRE BRUSHES CONTINUED

SP30891
WIRE BRUSH SET
230MM
3 PIECE

- Ideal for heavy duty cleaning
- 2 rows of bristles on each brush
- Ergonomic polypropylene handles

SET INCLUDES

- Carbon Steel Bristled Brush
- Stainless Steel Bristled Brush
- Brass Bristled Brush



SP30892
WIRE BRUSH SET
254MM
3 PIECE

- Ideal for heavy duty cleaning
- 4 rows of bristles on each brush
- Ergonomic polypropylene handles

SET INCLUDES

- Carbon Steel Bristled Brush
- Stainless Steel Bristled Brush
- Brass Bristled Brush



T830807
WIRE BRUSH SET
MINI - 180MM
6 PIECE

- Ideal for cleaning small parts or areas
- Ergonomic polypropylene handles

SET INCLUDES

- 2x Nylon Bristled Brushes
- 2x Stainless Steel Bristled Brushes
- 2x Brass Bristled Brushes



SP30890
WIRE BRUSH SET
MINI - 180MM
3 PIECE

- Ideal for heavy duty cleaning
- 3 rows of bristles on each brush
- Ergonomic polypropylene handles
- 5 hole tips

SET INCLUDES

- Nylon Bristled Brush
- Stainless Steel Bristled Brush
- Brass Bristled Brush



POWER BOARDS

SP69998
WORKSHOP POWER BOARD
SURGE PROTECTED
4 OUTLETS & 4 USB PORTS

- 4 individually switched outlets
- 4 USB ports
- Surge protected
- Overload protection
- Dimensions (approx.): 284 x 76 x 35mm



BUILT-IN USB PORTS

4 USB ports (4.5Amps) to ensure fast charging and reliable power for all of your USB compatible devices

SP69998MH
MAGNETIC POWER BOARD HOLDER
SUITS SP69998

- Heavy duty steel construction
- Designed to fit SP's 4 outlet/4 USB Ports Power board (SP69998)
- Power board easily and securely slides into the magnetic holder
- Strong magnetic plates securely anchor power boards to any ferrous metal surfaces
- Ideal for neatening workspaces and optimising workspace surface area

UNIQUE TO SP TOOLS



STRONG MAGNETIC PLATES

POWER BOARD SLIDES INTO HOLDER



POSITION YOUR POWER BOARDS ANYWHERE ON YOUR TOOL KIT.

FLUID TRANSFER

OIL, GREASE OR FUEL... WE CAN MOVE IT.

SP Tools has a fuel transfer tool that makes the job easy.

SUCTION AND TRANSFER PUMPS

SP65120
OIL SUCTION PUMP

- Perfect for removing or replacing oil in: engines, transmissions, differentials, gearbox sumps & crankcases
- Enables easy access to awkward locations & ideal for vehicle & machinery use
- No priming necessary
- 10" Flexible hose
- 500ml capacity



SP65155
MULTI-PURPOSE PUMP - 1 LITRE

- Great for top up jobs - quicker and easier
- Ideal for topping up difficult to access oiling points on motor vehicles, lawn mowers, chain saws, outboard and two stroke motors, and other odd jobs around the workshop and home
- Suitable for all oils, automatic transmission fluids, brake fluids and general purpose cleaners, the self-contained unit will prevent oil contamination when not in use



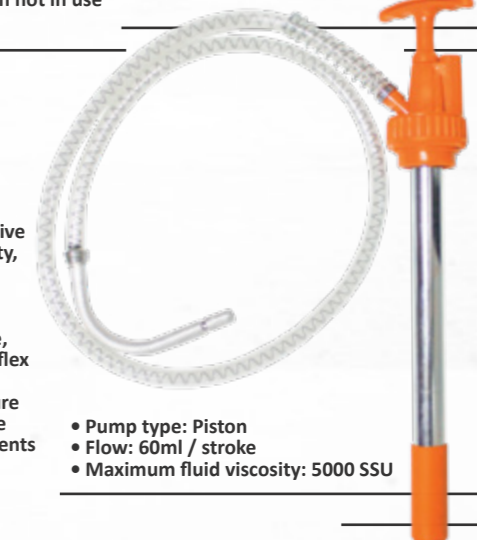
SP65156
DRUM PUMP
20 LITRE

- Ideal for transferring non-corrosive fluids of light to medium viscosity, such as engine oil, gear oil, transmission fluid, automotive additives, machine oil, etc.
- The pump is a down-stroke style and has a fixed steel spout
- This pump is self-priming
- Pump type: Piston
- Flow: 60ml / stroke
- Maximum fluid viscosity: 5000 SSU



SP65157
GEAR OIL PUMP
20 LITRE

- Ideal for transferring non-corrosive fluids of light to medium viscosity, such as engine oil, gear oil, transmission fluid, automotive additives, machine oil, etc.
- The pump is a down-stroke style, comes with a 1.2m oil-resistant flex hose with non-drip nozzle and a drain back nozzle holder to ensure the excess oil flows back into the drum to prevent spills and accidents
- This pump is self-priming



- Pump type: Piston
- Flow: 60ml / stroke
- Maximum fluid viscosity: 5000 SSU

T865000
FLUID TRANSFER PUMP
BATTERY OPERATED

- Suitable for the rapid, mess-free, transferring of Petrol, Diesel, Kerosene, oil, Water (non potable) and other non-corrosive liquids.
- No heavy lifting of containers.
- Durable battery operated impeller pump transfers up to 13 Litres (3.5 Gallons) of liquid per minute
- 60cm flexible tubing and 30cm extended reach suction pipe
- Runs on 2 x 1.5V D Alkaline batteries (not included)



TRANSFERS
13 LITRES
 PER MINUTE

