



**R410A**  
**Non Inverter**  
Wall Mounted  
Series



**R410A**

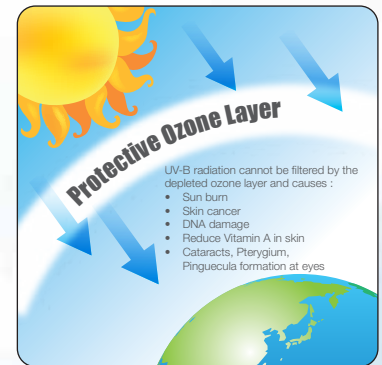
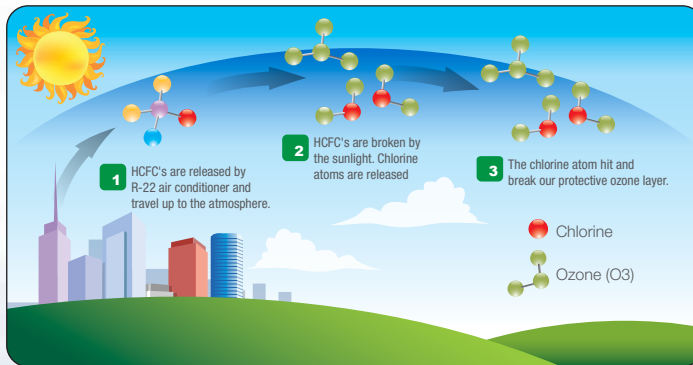
FTN-0914-A

## Wall Mounted Series

| TYPE OF REFRIGERANT<br><b>R410A</b> | Indoor Model | Outdoor Model   | Capacity Range   |
|-------------------------------------|--------------|---|--|
|                                     |              | <br>FTN10/15/20/25PV1L<br>FTN10/15/20/25PV1M<br><br><br>FTN10/15/20/25MV1I9<br>FTN10/15/20/25MV1J9<br><br><br>FTN311V1L<br>FTN311V1M | <br>RN10/15FV1<br><br><br>RN20/25CV1<br><br><br>RN28CV1 |

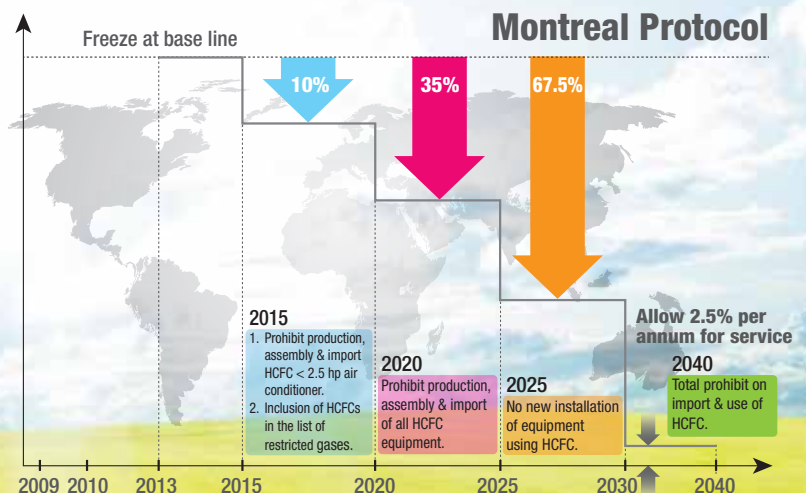
### Classic Refrigerants Deplete Ozone

- R22 refrigerant is a hydrochlorofluorocarbon (HCFC) compound.
- R22 is an ozone depletion substance which contain chlorine.
- Chlorine deplete the protective ozone layer by the processes below:



### Regulations

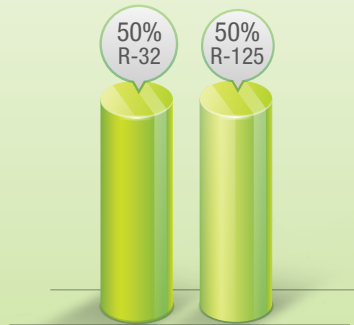
- According to Montreal Protocol, R22 will be gradually phased-out.
- In Malaysia, Department of Environment (DOE) has implemented HCFC Phase Out Management Plan (HPMP).
- For R22 air-conditioners, 25,000 btu/hr and below, will be phased out by year 2015.



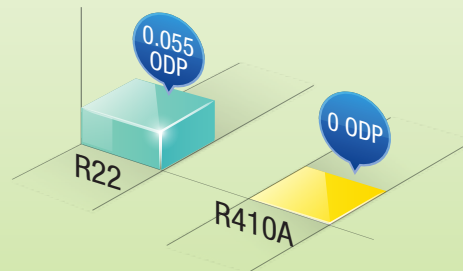
# Refrigerant Alternative

## R410A: The Ozone-Friendly Refrigerant

- R410A as an alternative to R22 refrigerant because it is an ozone-friendly refrigerant.
- R410A refrigerant has no chlorine content which do not contribute to the depletion of the ozone layer.
- R410A is of zero ozone depletion potential (ODP=0).
- The lower the ODP value, the better environmental performance.



The Composition of R410A  
\* R-32: CH<sub>2</sub>F<sub>2</sub>; R-125: C<sub>2</sub>HF<sub>5</sub>



The Comparison of Ozone Depletion Potential (ODP)

## Outlook Design

- **FTN-P Series** : The beautiful and clean design brings out a feeling of elegance and simplicity in your interior decoration.
- **FTN-M Series** : Designed with a modern-stylish and glossy exterior casing to enhance your interior decoration.

## Ion-Plasma \* Only for FTN-M Series Purify The Air

- **i-Plasma** effectively deactivated the bacteria by damaging microbial DNA and surface structures without being harmful to human tissues.

### Cleanse The Air

- Extra negative ions produced by **i-Plasma** can remove airborne contaminants from the air we breathe and bring the air fabulously fresh and clean.

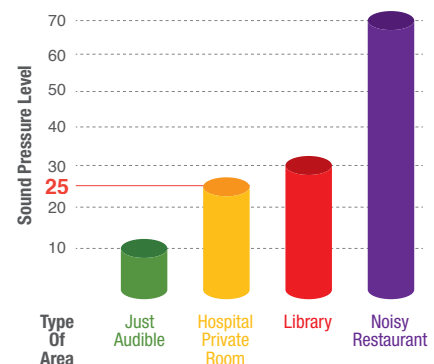


## Built-In-Starter (BIS) \* For 1-2.5hp only

- Protect air conditioner from overcurrent condition due to malfunctioning of internal parts.
- This will prolong the unit's lifespan as the unit will be protected from overcurrent.

## Quiet Operation

Users are given more choices of up to five selectable fan speeds. By selecting the Quiet mode users can enjoy the refreshing cool air at the sound level as low as 25dBA.  
\* Sound pressure levels are measured according to JIS C 9612 standard.



## Compact and Easy-To-Use Controller

- Prominent temperature display.
- Real-time clock display.
- Easily accessible buttons



DGS01 Wireless Controller

## Slim Wired Controller (Optional)

The unit also offers an optional wired controller upon your special requirement.

- Dedicated buttons for Quiet and Turbo functions
- Key lock function
- Real-time timer (7 days option, 2 events daily)



DSLM8 Wired Controller

## High Efficiency Hydrophilic Fin

- It encourages condensation of water.
- The condensated water moves easily to the drain pan thus enhancing the cleanliness and lifespan of the cooling coil.

# Product Features

# Features

## Self-Diagnosis System

The advanced Daikin R410A Non Inverter Wall Mounted Series is an intelligent unit equipped with a self-diagnosis system that can detect and indicate malfunctions with LED lights blinking.

## Turbo Mode

- This function is available in COOL mode.
- Upon activation, the unit will run to full power with the indoor fan running at high speed for 20 minutes. This will provide a fast cooling during operation.

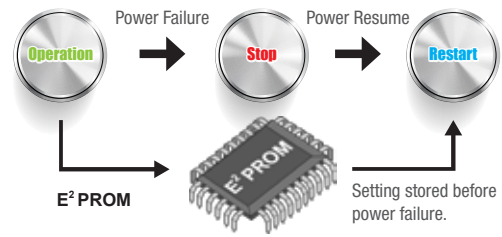
## Smooth Air Distribution

- SCR motor (Silicon Control Rectifier), voltage controlled speed provides better and smooth air flow swing.
- High efficiency X-flow fan provides smooth air flow and quiet operation.



## Auto Random Restart

- Once power resumes after a blackout, the unit will restart automatically at its last setting condition.
- This eliminates the need to restart manually after each power failure.



## 5 Years Warranty

The outstanding Daikin R410A Non Inverter Wall Mounted Series come with 5 years warranty on the 1.0 - 2.75hp compressor.



# Specifications



FTN10/15/20/25PV1L  
FTN10/15/20/25PV1M



FTN10/15/20/25MV1I9  
FTN10/15/20/25MV1J9



FTN311V1L  
FTN311V1M

## R410A

| MODEL                    | INDOOR UNIT |  | WIRELESS     | FTN10PV1L                  | FTN15PV1L    | FTN20PV1L         | FTN25PV1L    | FTN311V1L         |
|--------------------------|-------------|--|--------------|----------------------------|--------------|-------------------|--------------|-------------------|
|                          |             |  | WIRED        | FTN10MV1I9                 | FTN15MV1I9   | FTN20MV1I9        | FTN25MV1I9   | -                 |
|                          |             |  |              | FTN10PV1M                  | FTN15PV1M    | FTN20PV1M         | FTN25PV1M    | FTN311V1M         |
|                          |             |  |              | FTN10MV1J9                 | FTN15MV1J9   | FTN20MV1J9        | FTN25MV1J9   | -                 |
|                          |             |  | OUTDOOR UNIT | RN10FV1                    | RN15FV1      | RN20CV1           | RN25CV1      | RN28CV1           |
| TOTAL COOLING CAPACITY   |             |  | Btu/hr       | 9,500                      | 12,000       | 18,000            | 22,000       | 26,000            |
|                          |             |  | W            | 2,784                      | 3,517        | 5,275             | 6,448        | 7,620             |
| INPUT POWER              |             |  | W            | 870                        | 1,105        | 1,835             | 2,060        | 2,560             |
| RUNNING CURRENT, 1Φ [3Φ] |             |  | A            | 3.86                       | 4.94         | 8.10              | 9.14         | 12.20             |
| EER                      |             |  | Btu/hr/W/W/W | 10.92 / 3.20               | 10.86 / 3.18 | 9.81 / 2.87       | 10.68 / 3.13 | 10.16 / 2.98      |
| POWER SOURCE             |             |  | V/Ph/Hz      | 220-240 / 1 / 50           |              |                   |              |                   |
| REFRIGERANT TYPE/CONTROL |             |  |              | R-410A / OUTDOOR CAP. TUBE |              |                   |              |                   |
| AIR FLOW                 |             |  | CFM          | 342                        | 355          | 531               | 614          | 670               |
| SOUND PRESSURE LEVEL     |             |  | HIGH         | 38                         | 40           | 42                | 46           | 49                |
|                          |             |  | LOW          | 27                         | 29           | 36                | 40           | 45                |
|                          |             |  | SUPER LOW    | 25                         | 28           | 35                | 37           | -                 |
| INDOOR UNIT              |             |  | P-SERIES     | 288 x 800 x 212            |              | 310 x 1,065 x 228 |              | -                 |
|                          |             |  | M-SERIES     | 288 x 800 x 216            |              | 310 x 1,065 x 233 |              | -                 |
|                          |             |  | 311-SERIES   | -                          |              | -                 |              | 360 x 1,200 x 200 |
| OUTDOOR UNIT             |             |  |              | 550 x 658 x 273            |              | 654 x 855 x 328   |              | 756 x 855 x 328   |
| UNIT WEIGHT              |             |  | INDOOR UNIT  | 9                          |              | 14                |              | 17                |
|                          |             |  | OUTDOOR UNIT | 28                         | 29           | 43                | 47           | 57                |
| COPPER PIPE SIZE         |             |  | LIQUID       | 6.35 / 1/4                 |              |                   |              | 9.52 / 3/8        |
|                          |             |  | GAS          | 9.52 / 3/8                 |              | 12.7 / 1/2        |              | 15.88 / 5/8       |

1) DUE TO OUR POLICY OF INNOVATION, ALL SPECIFICATIONS ARE SUBJECT TO CHANGE BY THE MANUFACTURER WITHOUT PRIOR NOTICE.  
 2) ALL UNITS ARE BEING TESTED AND COMPLY TO ISO 5151.  
 3) NOMINAL COOLING CAPACITY ARE BASED ON THE CONDITIONS BELOW :  
 COOLING - 27°C DB / 19°C WB INDOOR AND 35°C DB / 24°C WB OUTDOOR  
 4) SOUND PRESSURE LEVELS ARE MEASURED IN OYLM R&D SOUND ROOM.

**GA** GROUP ASSOCIATED (C&L) SDN BHD (109719-M)

Head Office: Tel: 03-7718 8388

Email: sales\_enquiry@daikinmalaysia.com.my, customer\_service@daikinmalaysia.com.my

- Branches:
- Penang Tel: 04-331 1670
  - Pahang Tel: 09-567 6778
  - Melaka Tel: 06-288 1133
  - Sarawak Tel: 082-333 299
  - Kedah Tel: 04-733 0235
  - Johor Tel: 07-557 7788
  - Perak Tel: 05-548 2307
  - Sabah Tel: 088-722 194
  - Negeri Sembilan Tel: 06-768 8969
  - Kelantan Tel: 09-747 4678

Authorized dealer: