



Technical Specification, Data sheet

N 3085, 50 Hz



Flygt



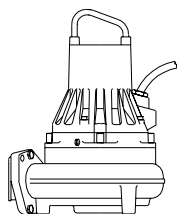
ITT Industries

TECHNICAL SPECIFICATION

Data sheet

N 3085.182/092

Type of installation: P, S, T, Z



Product

Submersible waste water pump for pumping of:

- waste water
- raw or clean water
- cooling water
- sludge
- storm water
- industrial effluent

The pump is also available in an Ex-approved version (3085.092).

Process data

Liquid temperature max. 40° C (105° F)

3085.182 is also available in a version for liquid temperatures up to 90° C (195° F).

Depth of immersion max. 20 m (65 ft)

Lowest liquid level See dimensional drawing

The pH of the pumped liquid 5.5 – 14

Liquid density max. 1100 kg/m³ (9.2 lb/USgal)

Pressure class MT – medium head version

Motor data

General

Frequency 50 Hz

No of phases 3

Insulation class F (155° C; 310° F)

Thermal contacts opening temperature 125° C (260° F)

No of starts/hour max 15

50 Hz, 1.3 kW, 1385 r/min, 3 ~, 4-Pole, P/S-installations

Voltage V	Rated current A	Starting current A
230 D	5.5	23
400 D	3.2	13
400 Y	3.2	13
415 Y	3.0	13
500 D	2.5	9.6
690 Y	1.8	7.5

50 Hz, 1.0 kW, 1415 r/min, 3 ~, 4-Pole, T/Z-installations

Voltage V	Rated current A	Starting current A
230 D	4.4	23
400 D	2.6	13
400 Y	2.6	13
415 Y	2.4	13
500 D	1.9	9.6
690 Y	1.5	7.5

50 Hz, 2.0 kW, 1395 r/min, 3 ~, 4-Pole, P/S-installations

Voltage V	Rated current A	Starting current A
230 D	8.0	38
400 D	4.6	22
400 Y	4.6	22
415 Y	4.4	20
500 D	3.6	15
690 Y	2.7	12

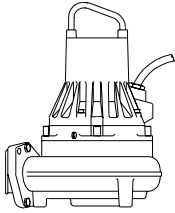
50 Hz, 1.4 kW, 1415 r/min, 3 ~, 4-Pole, T/Z-installations

Voltage V	Rated current A	Starting current A
230 D	6.0	38
400 D	3.5	22
400 Y	3.5	22
415 Y	3.3	20
500 D	2.6	15
690 Y	2.0	12

Power cable

SUBCAB®

4G 1,5 mm²+2x 1,5 mm²
4G 2,5 mm²+2x 1,5 mm²



TECHNICAL SPECIFICATION

Data sheet

N 3085.182/092

Type of installation: P, S, T, Z

Weight (excl. power cable)

	MT
P-installation	66 kg (146 lb)
S-installation	68 kg (150 lb)
T-installation	71 kg (157 lb)
Z-installation	88 kg (194 lb)

Material

Impeller	Cast iron
Pump housing	Cast iron
Stator housing	Cast iron
Shaft	Stainless steel
Mechanical face seals	
Inner seal:	Carbon/ceramic
Outer seal:	
Alt I	Ceramic
Alt II	Silicon carbide
Alt III	Corrosion resistant cemented carbide
O-rings	Nitril rubber 70° IRH

Surface treatment

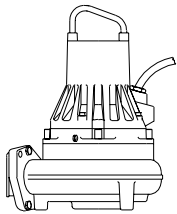
Outer casing: The outer casing is coated with black two pack oxiran ester paint.

Oil in oil casing

Volume	1 lit (1.1 US quarts)
Viscosity	ISO VG 15
Type	Paraffin oil

Options

Leakage sensors:	
—water in stator housing	FLS
—water in oil casing	CLS

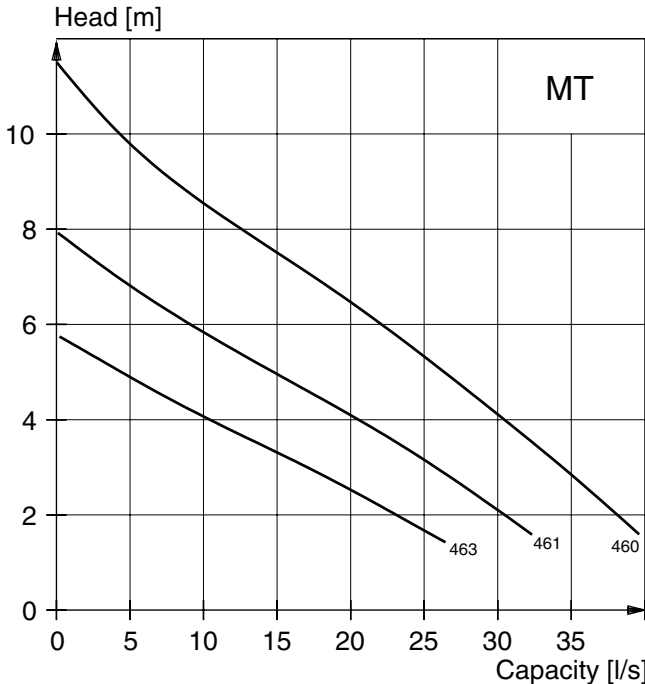
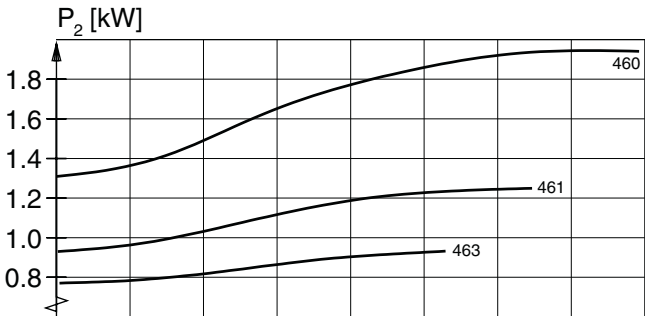


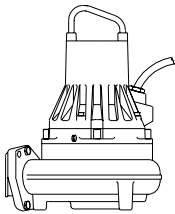
**Performance curve,
P-, S-, T-, Z-installation, 50 Hz**

Each pump is tested in accordance with ISO 9906/Annex A.

4XX = curve numbers

MT = medium head





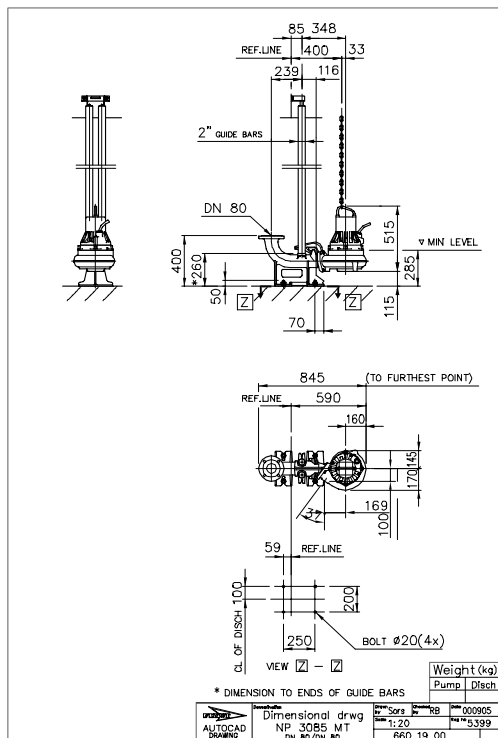
TECHNICAL SPECIFICATION

Data sheet

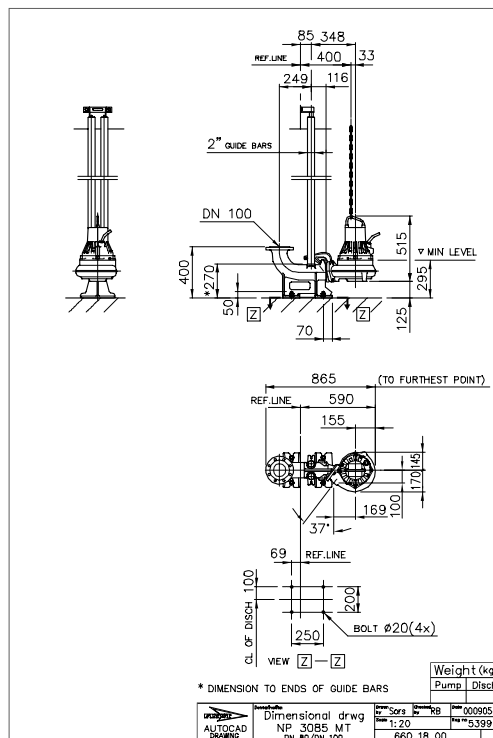
N 3085.182/092

Type of installation: P, S

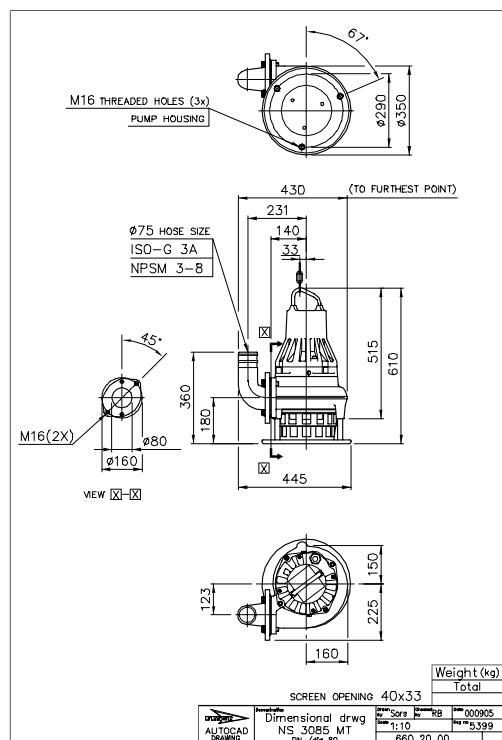
Dimensional drawing MT, P-installation (DN 80)



Dimensional drawing MT, P-installation (DN 100)



Dimensional drawing MT, S-installation

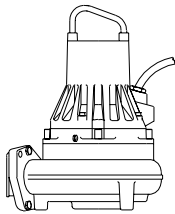


TECHNICAL SPECIFICATION

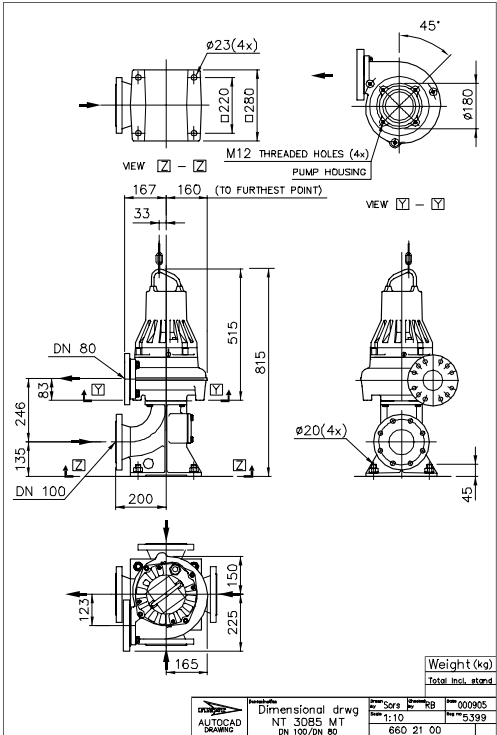
Data sheet

N 3085.182/092

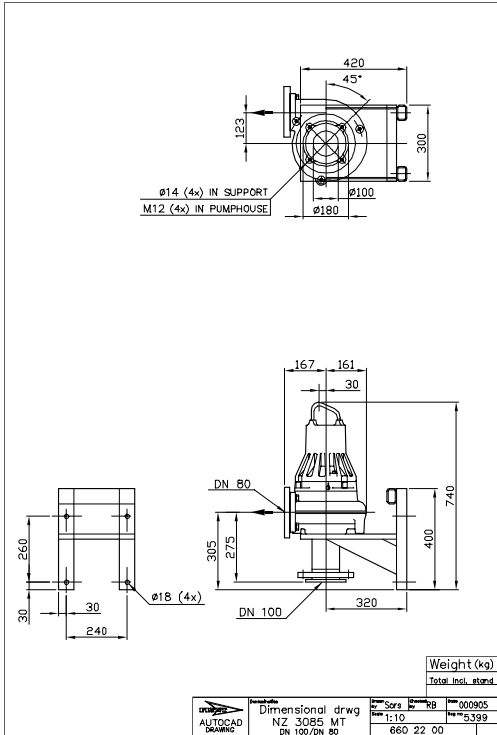
Type of installation: T, Z

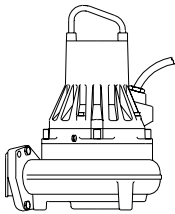


Dimensional drawing MT, T-installation



Dimensional drawing MT, Z-installation





TECHNICAL SPECIFICATION

Data sheet

N 3085.182/092

NOTES



The manufacturer reserves the right to alter performance, specification or design without notice.

www.flygt.com